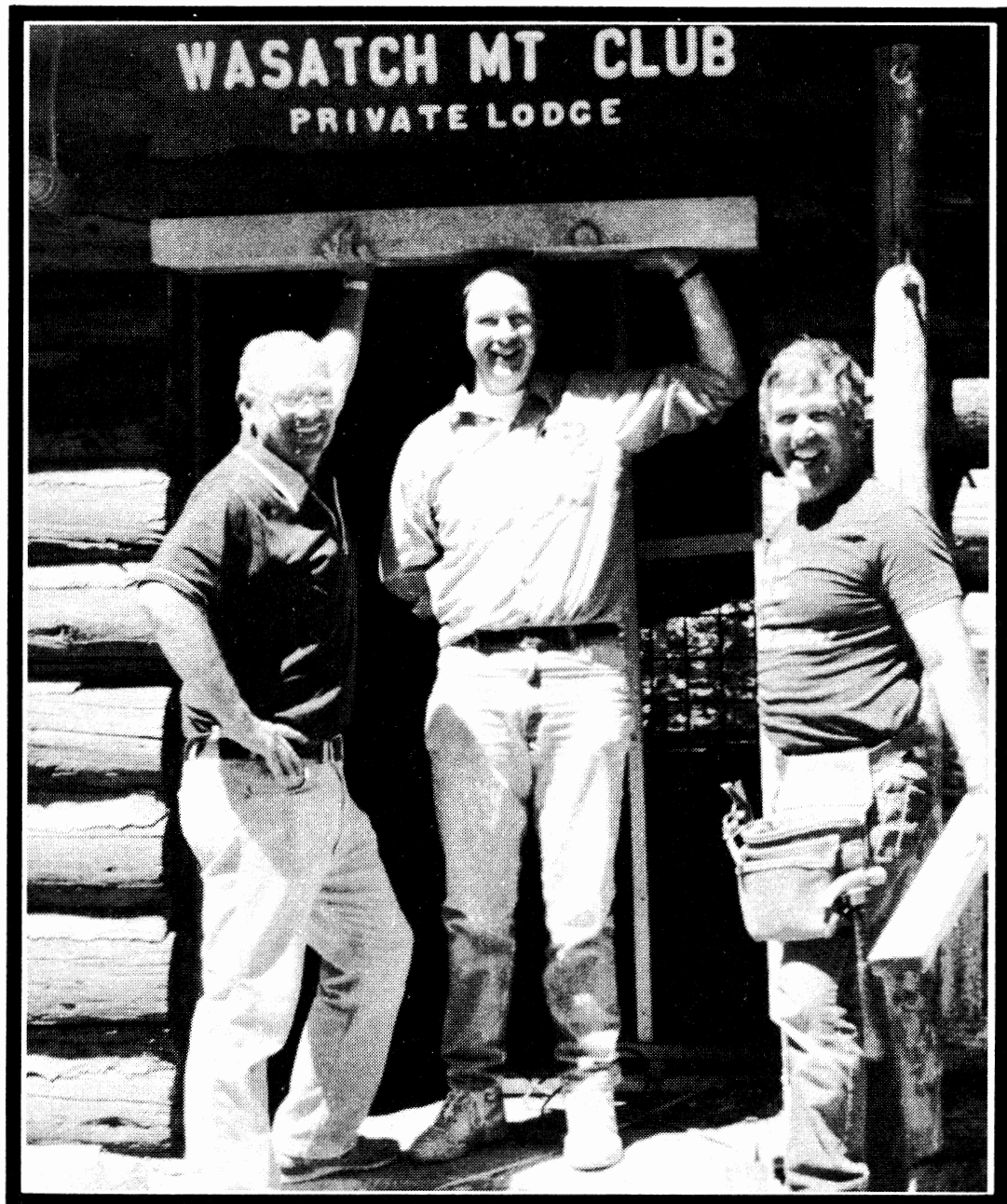


The Rambler

Wasatch Mountain Club
OCTOBER



VOLUME 70, NUMBER 10, OCTOBER 1993
Printed on 100% Recycled Paper

The Rambler

Managing Editors

Jean Frances, Christine Allred

ADVERTISING: Knick Knickerbocker
CLASSIFIED ADS: Sue de Vall
COVER LOGO: Knick Knickerbocker
MAILING: Christine Allred
PRODUCTION: Jean Frances and
..... Christine Allred

The office will generally be staffed from 9 am to 2 pm on Tuesdays and Thursdays by Carol Rauba. Office phone number—363-7150.

THE RAMBLER (USPS 053-410) is published monthly by the WASATCH MOUNTAIN CLUB, Inc., 888 South 200 East, Suite 207, Salt Lake City, UT 84111-4220. Telephone: 363-7150. Subscription rates of \$12.00 per year are paid for by membership dues only. Second-class postage paid at Salt Lake City, UT.

POSTMASTER: Send address changes to THE RAMBLER, Membership Director, 888 South 200 East, Suite 207, Salt Lake City, UT 84111-4220. **CHANGE OF ADDRESS:** This publication is not forwarded by the Post Office. Change of Address should be submitted in writing to the Membership Director, 888 South 200 East, Suite 207 Salt Lake City, UT 84111-4220. All correspondence regarding the mailing of THE RAMBLER should be directed to the Membership Director at that address. Allow 45 days for address changes.

The right is reserved to edit all contributions and advertisements and to reject those that may harm the sensibilities of WMC members or defame the WMC.

Copyright 1993, Wasatch Mountain Club.

PROSPECTIVE MEMBER INFORMATION

THE RAMBLER, the official publication of the Wasatch Mountain Club, is published monthly by and for its members. Persons wishing to become members may receive THE RAMBLER for two months by writing the Membership Director, 888 South 200 East, Suite 207, Salt Lake City, UT 84111 and enclosing \$3.00. Checks are to be made payable to the Wasatch Mountain Club. There is a \$10.00 charge for returned checks.

MEMBERSHIP & RAMBLER INFORMATION

MEMBERS: If you have moved, please notify the WMC Membership Director, 888 South 200 East, Suite 207, Salt Lake City, UT 84111-4220, of your new address.

If you did not receive your **RAMBLER**, contact the Membership Director to make sure your address is in the Club computer correctly.

IF YOU WANT TO SUBMIT AN ARTICLE: Articles must be typed double spaced or on a floppy disk with a hard copy, also doubled spaced, and **received by 6:00 pm on the 15th of the month preceding publication.** Drop articles off in the WMC office mail slot (Mon.-Fri.—8 am to 5 pm) or mail or deliver to Editors' **Blue Box** at 5352 Old Trenton Way, Murray, 84123. Pick up of disks at same address but in **Red Box.** Include your name and phone number on all submissions.

IF YOU WANT TO SUBMIT A PHOTO: We welcome photos of all kinds: black & white prints, color prints, and slides. Please include captions describing when and where the photo was taken, and the names of the people in it (if you know). **Photos will not be returned unless requested and accompanied by a self-addressed stamped envelope. Otherwise they will be found in the RED BOX at: Christine Allred's, 5352 South Old Trenton Way, Murray 84123.**

WMC PURPOSE

(Article II of the WMC Constitution)

The purpose shall be to promote the physical and spiritual well being of its members and others by outdoor activities; to unite the energy, interests and knowledge of students, explorers and lovers of the mountains, deserts and rivers of Utah; to collect and disseminate information regarding the Rocky Mountains in behalf of science, literature and art; to explore and picture the scenic wonders of this and surrounding states; to foster awareness of scenic beauties; and to encourage preservation of our natural areas including their plant, animal and bird life.

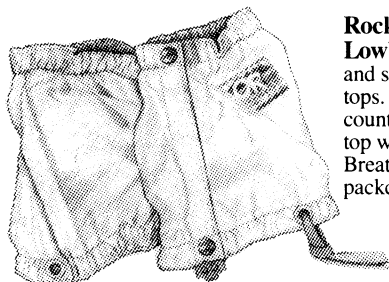
COVER PHOTO:

Lodge Work Party: Some of the crew enjoying repairin' and fixin' up the Lodge (more opps available). L to R Bob ?, Andy Childs and Vince DeSimone. Photo by: Bob Myers

Outdoor Research

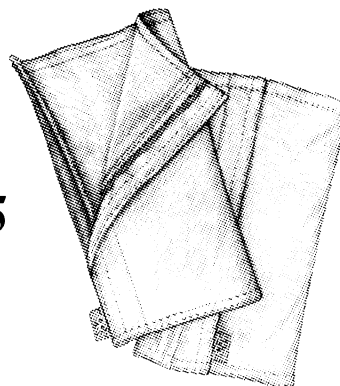


Vigorously Used and Field Tested Products for Serious Outdoor Stuff!



Rocky Mountain Low™ Gaiters Keeps scree and snow from invading boot tops. Excellent for cross country ski outings! Elasticized top with Velcro front closure. Breathable 8 oz. nylon packcloth.

19.95

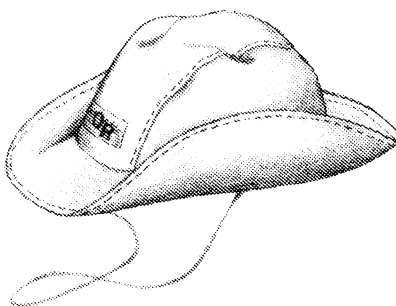


Flex-Tex™ Alpine Gaiters Well-designed gaiter made of extremely abrasion resistant and comfortable Flex-Tex Spandura - Cordura with Lycra! Full-length zipper with storm flap provides easy on and off.

29.95

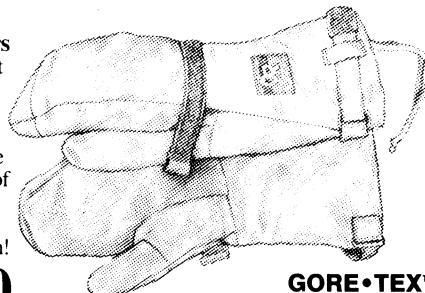
Outdoor Research Seattle Sombbrero™ Latest in fabric technology and design innovations! Totally adjustable, with crown made from seam-sealed waterproof Gore-Tex® fabric with wicking Dryline lining. 4 sizes.

37.95

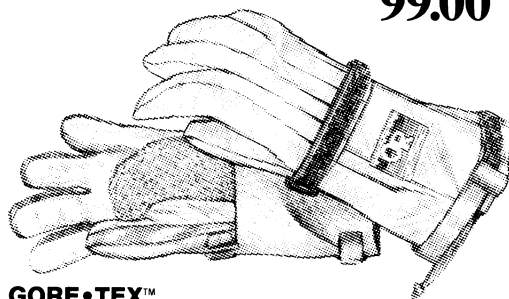


Expedition Modular Mitts® with Gore-Tex Liners Probably the most sophisticated mitts available. Excellent design and fit with differentially cut layers for increased warmth without bulkiness. Features include Gore-Tex fabric shell, cinch-strap wrist/cuff adjustment and removable wrist leashes. Also thin foam layer for knuckle protection. Velcro-in **GT Liners** (included) have a layer of Moonlite Pile inside a Gore-Tex mitt insert covered with Wickline for moisture transport. Use Mitts and liners Separately or together for ultimate warmth and protection!

99.00



GORE•TEX™



GORE•TEX™

Expedition Modular Gloves with Gore-Tex Liners All of the primary features of the Modular Mitt into a glove! Each finger (and the thumb!) is strongly curved and employs fully-boxed construction to maximize insulation while maintaining a high level of dexterity. Made of rugged Gore-Tex outer with Moonlite Pile glove liner. Used on numerous technical climbing expeditions.

119.00

Kirkham's®
outdoor products

3125 South State Street (801) 486-4161 Open Monday - Friday 9:30 to 9:00 Saturday to 7:00

TWENTY FIVE YEARS AGO IN THE RAMBLER

OCTOBER 1968

by Dale Green, Historian

"After 14 years and 100,000 telephone calls, Pete and Pinky have asked the Board to change the location of Club Headquarters. No hard feelings are involved; they just want to give someone else the chance to have as much fun as they have had. We have tentative plans for a new headquarters, but there will be some definite changes in our registration procedures."

Pete and Pinky, otherwise known as O'Dell and Edith Petersen, maintained Club Headquarters at a shoe shop at 425 So. 900 West for as long as most members could remember, handling all registrations, prospective member questions, and Lodge reservations. Their contribution to the Club was unprecedented and sorely missed.

Another resignation caught the Board by surprise—Vivian Higgenbotham, the faithful *Rambler* mailer for years, moved to L.A. forcing us to scramble to find another volunteer. Roy Keir and a few assistants took over the "horrendous task."

This month's photos included spectacular views of Nevada's Wheeler Peak by Pat King and a centerspread of the Wind River Mountains by Alexis Kelner.

FIFTY YEARS AGO IN THE WMC

October, 1943

(From Board of Directors' Minutes)

President Duerkop was upset that four members were paid for work done at the lodge. It seems they went up there for a good time but found the lodge in a mess just before it was to be rented out and felt it their duty to clean it up. Motions were made to ensure this never happens again.

It was proposed to raise the fire insurance on the lodge to \$1000 with the renewal in January.

A motion was made to expend \$148 for a war bond during the next bond drive. The bond will be used toward building a new roof on the lodge when material is available.

At the annual nomination and election meeting, member George Unseld moved that membership age be reduced to 17, provided that parents sign a liability release. The age would revert back to 18 when peace treaties were signed. The motion was defeated in a vote of the general membership via secret ballot.

Eleven members were elected from a slate of 16 nominees to serve on the Board of Directors. These 11 members-at-large would then elect a President who in turn appointed the rest to specific Directorships.

EVENTS AT A GLANCE

HIKING

October

- 1 Old Timers Hike
- 1 Reynolds Peak Moonlight Hike
- 2-3 Capitol Reef Car Camp
- 2-3 San Rafael Reef Car Camp
- 2 Lake Mary Hike
- 2 Lambs Canyon Overlook Hike
- 2 Lake Blanche Family Hike
- 2 Monument Peak Hike
- 2 Desolation Trail Hike
- 3 Salt Lake Overlook Hike
- 3 Alexander Basin Hike
- 3 Maybird Lakes Hike
- 3 Mineral Fork and Beyond Hike
- 3 North Peak of Mount Olympus Hike
- 9-10 Henry Mountains Car Camp
- 9-10 Sids Mountain Exploratory Backpack
- 9 Donut Falls Family Hike
- 9 Mount Aire Hike
- 9 Craner Peak Hike
- 9 Chipman Peak Via Lake Hardy Hike
- 10 Red Butte Peak Hike
- 10 Great Western Trail Hike
- 10 Neffs Canyon to the Saddle Hike
- 10 Dromedary Peak Hike
- 16 Lambs Pass Family Hike
- 16 Mount Olympus Hike
- 17 Stansbury Island Exploratory Hike
- 17 Bountiful to Morgan County Ridge Hike
- 17 Sheeprock Range Exploratory Hike
- 23 Notch Peak Hike
- 23 Notch Peak Variation Hike
- 24 Cave Exploring
- 29-Nov 1 Backpack Havasu Grand Canyon
- 30 Houndstooth Hike
- 30 Church Fork Peak Hike
- 31 Van Cott Peak Hike
- 31 Silver Island Range Hike
- 31 Mount Olympus Hike

November

- 6 Leader's Choice Hike
- 6 Leader's Choice Hike
- 7 Big Beacon Hike
- 7 Leader's Choice Hike

BOATING

October

- Oct 8-11 Kayak at Lake Powell
- Oct 9 Equipment Work Day
- Oct 9 Boating Party

November

- 11 Boating Permit Planning Party

BIKING

October

- 2 Mt. Bike Daniel's Pass
- 3 Brighton
- 6 Emigration Canyon
- 9 Mt. Bike in Butterfield Canyon
- 10 West Jordan to Saltair
- 13 Emigration Canyon
- 16 Go to Salt Sea by Bike
- 16-20 Bike Tour—California Tour South
- 17 Parleys Canyon to Little Mt.
- 23 Mount Nebo Loop
- 24 Morgan to Mt. Green and Back

MOUNTAINEERING/CLIMBING

October

- 1-3 Climbing City of Rocks—Idaho

(Note to mountaineers: Ice axes can be rented commercially and the Club has a few available to those who are early in registering for trips.)

SPECIAL EVENTS

October

- 9 Lodge Work Party
- 9 Adopt-a-Highway Service Project
- 9 Housekeeping Party at the Lodge
- 23 Lodge Work Party
- 27 General Membership Meeting
- 31-Nov 7 Scuba Dive & Explore Roatan & Honduras

SOCIALS

October

- 2 Family Night at the Lodge
- 2 Barbecue in Park City
- 3 Get Together at Scott Harrison's
- 30 Halloween Dance at the Lodge

November

- 11 Boating Permit Planning Party

VOLLEYBALL

DATES: Mondays Oct. 4, 11, 18, 25

MEET: Highland High School
2100 S 1700E

TIME: 6:30 pm

FEE: \$1 Members \$2 non members

CALL: Ross Martin 364-4006

**PROMOTE YOUR CLUB WITH A LOGO
TEE, SWEAT OR GOLF SHIRT**

High quality 50/50 cotton/poly
blend

PRICES:

Tee Shirt \$ 8.00
Golf Shirt** \$12.00
 Sweatshirt \$15.00
 Hooded Sweatshirt \$18.00

SIZES:

ADULTS

S (34-36)
 M (38-40)
 L (42-44)
 XL (46)
XXL **

CHILDREN

(2-4)
 (6-8)
 (10-12)
 (14-16)

COLORS (SHIRT)

White **

Purple
 Dark Grey
 Light Grey
 Royal Blue
 Black

Green Mtns
 w/blue border
 White
 White
 Black
 White
 White

(INK)



WMC Logo on back



WMC Badge on front

HOW TO ORDER

Complete order form and mail with check, name and telephone number to:
 Wasatch Mountain Club
 Membership Director
 888 S. 200 E. Ste. 207
 Salt Lake City, Utah 84111

ORDERS MUST BE RECEIVED BY OCTOBER 30, 1993.

NAME:

TELEPHONE:

ITEM	COLOR	SIZE	QTY	PRICE EACH	TOTAL PRICE

Call 363-7150 to arrange for pick-up. All pick ups by November 23, on Tuesday & Thursdays between the hours of 9 a.m and 2 p.m.

PUBLIC SERVICE ANNOUNCEMENTS

REI
3285 E 3300 S
486-2100

CTC: Marty Stum or Kelly Davis

- Oct 5 Bob Carey of the Earthquake Preparedness Information Center will present a slide show and lecture on earthquake preparedness.
- Oct 12 Meet some of the handlers and dogs who make up the Rocky Mountain Rescue Dogs association. Hear an overview of training and search techniques and basic tips on outdoor safety during tonight's informative discussion and slide show.
- Oct 19 Learn how to assemble an effective first-aid kit for your backpack, boat or vehicle. Registered Nurse, Linda Johnson, and Diane Tracey instruct you on how to adapt a first-aid kit to your specific needs. Also, we'll have a basic discussion of common emergency procedures.
- Oct 26 Staying warm in winter: Dave Smith gives advice on cold weather layering and preventing hypothermia.

All clinics are on Tuesday evenings and begin at 7:00 pm

NEEDED

PUBLIC SUPPORT FOR SLC TRAILS ORDINANCE

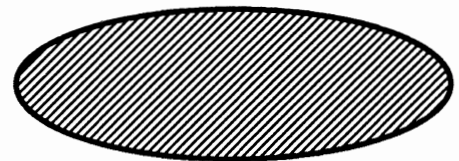
On the Agenda: Proposal
*"Subdivision Ordinance Amendment
Regarding Trails"*

Wednesday Oct. 6, 1993 8:30 am
County Commission Meeting Room 1100
1001 South State St.

**This ordinance should be of vital interest
to all hikers!!**

The ordinance defines trails and, where shown on the County Master Plan, requires a subdivider to dedicate and improve TRAILS necessary to provide public access to public lands and other TRAILS. Passage of this ordinance will be helped if a large public support contingent is evident.

**You are urged to attend.
For further information call:
Milton Hollander 277-1416**



The Lodge Directors are trying to replace the refrigerators. So if you have an extra one that is in good working condition that you would like to donate to the Lodge, please call Rich Osborne at 1-647-0205.

WMC NEEDS YOU

**Oct 9th & 23rd 9 am...ish to dusk
at the LODGE**

CLUB ACTIVITIES

Only activities approved by the appropriate **WMC Director** can be listed in the Club Activities section of the *Rambler*. Send your proposed activity for approval to the hiking, boating, skiing, etc., director for inclusion in their activity schedule. Those activities sent directly to the *Rambler*, without approval, will not be published.

PARKING INFO: CANYON PARKING NOTE: Even days - down side. Odd days - up side. Check sign in canyon.

HILLSIDE PARKING NOTE: Park on the west side of the parking lot, south of the bank.

Oct 1 **MOONLIGHT HIKE: REYNOLDS PEAK VIA BUTLER FORK** Greet the Harvest
Fri Moon with Karen Perkins (272-2225). Meet at the Big Cottonwood lot at 6 pm. Rating: 5.7.

Oct 1 **OLD TIMERS HIKE:** Ann McDonald (277-3870) wants old timers to call her to plan for
an easy Friday morning leader's choice hike. Ann is experimenting to see if there is interest
in hiking among her friends and/or old timers. Call Ann to register.

Oct 1-3 **CLIMBING: CITY OF ROCKS—IDAHO** Come join Xavier Guzman (774- 5676) for
Fri-Sun late season climbing at this world famous area. Fine climbing from moderate to extreme.
Leaders, please come so that the large numbers of new climbers can participate.

Oct 2 **SOCIAL: BARBEQUE/DECKWARMING PARTY** at Cheryl Soshnik's (1007 Woodside
Sat Avenue). This is in Park City. For directions call Cheryl at (649-9008). Bring a potluck
dish, your swimming suit for the hot tub, your own refreshments and \$2.00 per person. Soft
drinks will be provided.

Oct 2 **BIKE: MOUNTAIN BIKE DANIEL'S PASS (NTD)** Meet Lucy Shoell (272-5234) at
8:00 am. at K-Mart parking in Parley's Way to carpool up to Daniel's Pass (Highway 40,
approx. 16 miles east of Heber). We will ride 15 miles along gently rolling unpaved road from
Dan's Pass to Strawberry Ridge and back. Call Lucy if the weather looks questionable.
Helmets required.

Oct 2 **FAMILY HIKE: LAKE BLANCHE** Randy Long (943-0244) says: Adolescents are
welcome on this trip to one of our favorite lakes. Meet at the Big Cottonwood lot at 9 am.
Rating: 5.7.

Oct 2 **SOCIAL: FAMILY NIGHT AT THE LODGE** Rob Turner will be hosting this activity.
Potluck begins at 6:00. Games and fun will begin about 7:30 or 8:00 and there will be
storytelling. Anyone who is musically inclined, please bring guitars, etc., also bring your
favorite games. For more information, please contact Rob Turner (544-0605).

Oct 2 **HIKE: DESOLATION TRAIL** Norm Pobanz (266-3703) is doing this 20+ mile hike the
hard way, from Thaynes Canyon in Mill Creek to Beartrap Fork in Big Cottonwood. Call
Norm to register. Unrated but very strenuous.

- Oct 2
Sat **HIKE: LAKE MARY** Jaelene Val Myrup wonders if the snow level will permit her to extend this hike toward Lake Catherine. Meet at the Big Cottonwood lot at 9 am. Rating: 1.8, more if you go further than Lake Mary.
- Oct 2 **HIKE: LAMBS CANYON OVERLOOK VIA ELBOW FORK** "This isn't a marathon," says Jim Nelson (969-8362). Bring hiking boots, food and water to prepare you for a leisurely stroll in the trees through Lambs. Meet at the Skyline High east lot at 9:30 am. Rating: 3.3.
- Oct 2 **HIKE: MONUMENT PEAK** Pat McEwen (571-5033) describes this as an exciting hike to a peak so pointy that only one person can summit at a time. Please call Pat to register and to discuss the skill and experience level necessary for this hike.
- Oct 2-3
Sat-Sun **CAR CAMP: CAPITOL REEF NATIONAL PARK** Noel de Nevers (328-9376) plans to use 4WD vehicles to reach the extreme western end of Capitol Reef, car camp there and explore on foot. This is a wild area without trails; it is an exploratory trip because the leader has never been there (nor has the ranger he spoke to!). There is a limit of 4 vehicles. Call Noel de Nevers to make a reservation.
- Oct 2-3 **CAR CAMP: SAN RAFAEL REEF** Join Will McCarvill (943-5520) for a car camp that combines a little work and a lot of pleasure. Saturday morning we will participate in grazing assessments with a BLM ranger. Saturday afternoon and Sunday we'll explore upper Eardley Canyon. Call Will to register.
- Oct 3
Sun **BIKE: BRIGHTON (MSD)** Meet Lily Schumann at the mouth of Big Cottonwood Canyon at 9:00 am for this traditional ride to Brighton. A great group breakfast can be enjoyed by all at the Brighton Store before returning. Helmets required.
- Oct 3 **HIKE: ALEXANDER BASIN** Randy Scott (486-5433) plans to preside over a pace which will have the group at the meadow for lunch; energetic people will then provide entertainment for lunchers by going to the pass. Meet at the Skyline High east lot at 9:30 am. Rating: 3.8.
- Oct 3 **HIKE: MAYBIRD LAKES** Experience fall colors in Little Cottonwood canyon with Jim Zinanti (967-8578). Meet at the Big Cottonwood lot at 9 am. Rating: 5.6.
- Oct 3 **HIKE: MINERAL FORK AND BEYOND** Mark McKenzie (486-4986) proposes to hike to the Regulator Johnson mine, then cross over and descend via Lake Blanche or perhaps Cardiff Fork. Meet Mark at the Big Cottonwood lot at 9 am. Unrated but estimated at 9 or more.
- Oct 3 **HIKE: NORTH PEAK OF MOUNT OLYMPUS** Larry Lawlor (278-5854) and Tom Walsh (959-5842) will try to find the obscure route to the north summit of Olympus. They will also try to work over to the south summit and descend via the normal trail. Caveat: this hike involves rock scrambling and exposure, and may become an exploratory hike. Participants should bring good luck charms and tolerant attitudes. Meet at the Skyline High east lot (3900 S near Wasatch Boulevard) at 8 am. Estimated rating is 8.6.

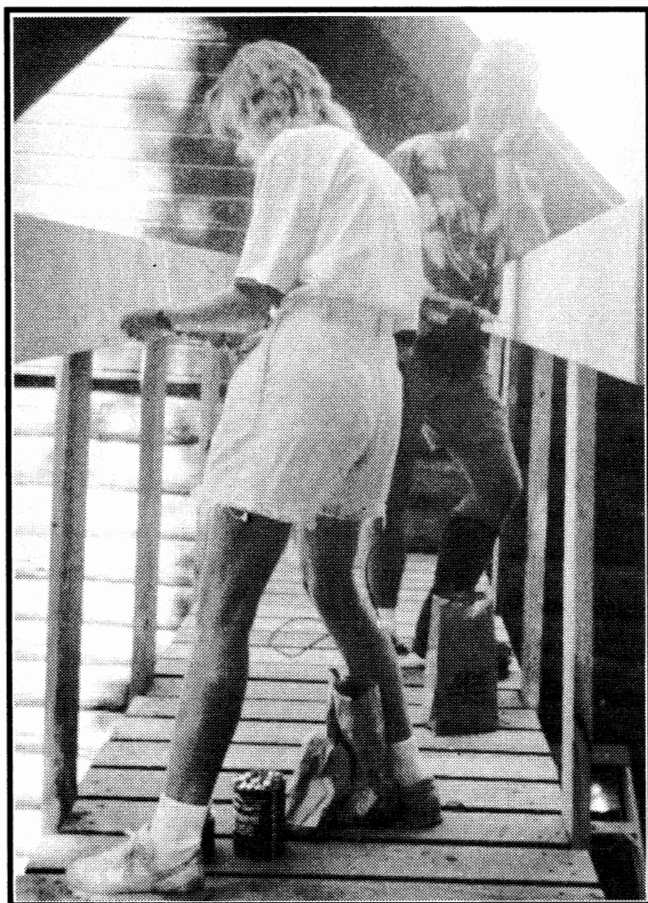
- Oct 3 Sun **HIKE: SALT LAKE OVERLOOK** Connie Miller (261-5826) will go at a slow pace for taking pictures. Meet Connie at the Skyline High east lot at 9:30 am. Rating: 3.6.
- Oct 3 **SOCIAL: SUNDAY** Come join in the fun at Scott Harrison's, 4636 S. Westview, for potluck. The hot tub is open so bring your swim suit. The fun begins at 6:00-9:00 pm. For more information, please call Cheryl at (277-9871).
- Oct 6 Wed **BIKE: EMIGRATION CANYON (NTD)** Join Kathy Hoenig (486-8525) at 5:45 pm across from the Hogle Zoo for an autumn ride in the canyon. Coffee afterwards. Helmets required.
- Oct 8-11 Fri-Mon **BOATING: SEA KAYAKING AT LAKE POWELL** A small group of sea kayakers will spend four days on the water exploring various sections of the northern half of Lake Powell. Paddlers must have their own fully outfitted sea kayak and the ability to use wind power. Participants on this backpack style trip can expect warm days, warm water, cool nights and uncrowded conditions. Call Chris Rowins(1-777-2341 work or 1-776-1031 home).
- Oct 9 Sat **ADOPT-A-HIGHWAY CLEANUP: THIS IS A WMC Service Project.** Meet Linda and Mark Feller (562-5428) at the Big Cottonwood west end of Park 'n' Ride lot at 9:00 am. Bring gloves, vests & bags provided. Children 11 and up may help. More info on page 20. *(There are three (3) Service Projects this weekend to choose from).*
- Oct 9 **LODGE WORK PARTY:** 9:00 am at the Lodge. Lunch provided with beverages by the Club. We have an exciting day of work planned, so contact the two Lodge Directors: Rich Osborne (647-0205) or Bob Myers (485-9209). Ask for more details about the work to be done and the tools needed to bring. Free admission to any WMC activity held tonight at the Lodge.
- Oct 9 **HOUSEKEEPING PARTY AT THE LODGE** This is to clean the Lodge prior to winter. Bring rags, mops, brooms, etc. to spend the morning making our Lodge shiny. We will begin at 9:30. A lunch of hamburgers and soft drinks will be provided to those who take pride in our lodge. For further information contact Randi (972-4435).
- Oct 9 **BIKE: MOUNTAIN BIKE IN BUTTERFIELD CANYON THIRD TIME'S A CHARM (MOD)** Lade Heaton (288-8832) says this time it will happen. Join him at 9:00 am at the 7200 S Park & Ride off I-15 to go for the 3500', 22 mile round trip. Helmets required.
- Oct 9 **BOATING: EQUIPMENT WORK DAY.** We always need help at this traditional event. There are repair kits and first aid kits to rehabilitate, stoves to fix, kitchen boxes to clean, rafts to patch, and you get the idea. Please show up if you've been able to take advantage of having used Club gear this summer. Meet at the WMC boating shed, 4317 South 300 West, #8 (directly north of Zim's) at 9:30 am.
- Oct 9 **BOATING: PARTY AT THE LODGE** This is a great time to see those folks you didn't run into at trip reunions and to share photos, see slides, etc. Plan on a potluck, happy hour to begin about 5:30 pm. Those who haven't boated with the Club are also welcome to attend. If you want to sleep over, bring a sleeping bag and it'll cost you a few bucks to stay the night.

- Oct 9 Sat **FAMILY HIKE: DONUT FALLS** David Rumbellow (485-6398) welcomes kids of all ages on this very easy hike. Bring lunch to eat at the stream, after visiting the stone donut with a waterfall cascading through the hole. Meet at the Big Cottonwood lot at 9 am. Rating: 1.1.
- Oct 9 **HIKE: CHIPMAN PEAK VIA LAKE HARDY** Cassie Badowsky (278-5153) will tackle this lake and summit combination above American Fork. Meet at the Park 'n' Ride at 7200 South and I-15 at 7 am. Estimated rating of 10.
- Oct 9 **HIKE: CRANER PEAK** Visit the high point of the Lakeside Mountains on the western shore of the Great Salt Lake with Donn Seeley (595-1747). Meet at the Utah Travel Council lot southeast of the state capitol at 9 am. Unrated but moderate, with some steep slopes, easy scrambling and cross-country hiking. Bring tough boots.
- Oct 9 **HIKE: MOUNT AIRE VIA ELBOW FORK** Rose Novak (487-6034) is going to lead this hike at a moderate pace. If autumn leaves are still on the trees, this will be a beautiful hike. Meet Rose at the Skyline High east parking lot at 9 am. Rating: 4.0.
- Oct 9-10 Sat-Sun **BACKPACK: SIDS MOUNTAIN EXPLORATORY** Mark McKenzie (486-4986) plans to work his way up to McCarthy Canyon in the southern end of Sids Mountain in the San Rafael Swell. Call Mark to register and get more details.
- Oct 9-10 **CAR CAMP: HENRY MOUNTAINS** Experience some outstanding views of canyon country in Utah's last-named mountain range with Howard Wilkerson (277-1510). Howard will camp at Bromide Basin and probably climb Mount Ellen and other peaks in the north end of the Henry Mountains. Call Howard to register and get details.
- Oct 10 Sun **BIKE: WEST JORDAN TO SALT AIR** (NTD+—41MI) Frank and Joyce Luddington (277-4564) lead this ride in August and liked it so much they have agreed to lead it again. Meet at the West Jordan Park (7941 So 2200 W) at 8:30 am. Call Frank in case of inclement weather. Helmets required.
- Oct 10 **HIKE: DROMEDARY PEAK** Rob Rogalski (272-2365) asks if you're ready to do some exposed rock scrambling and route finding on the way to this tall Big Cottonwood peak. Rob plans to ascend Broads Fork and return via Lake Blanche. Meet at the Big Cottonwood lot at 8 am. Rating: 11.2.
- Oct 10 **HIKE: GREAT WESTERN TRAIL** Ilka Allers-Olsen and Allen Olsen (272-6305) have something new: a hike from Big Mountain Pass to Parleys along the new Great Western Trail. Meet at the Parleys K-mart lot at 9 am. The leaders estimate a rating of 4.
- Oct 10 **HIKE: NEFFS CANYON TO THE SADDLE** Jim Robson (968-6799) wants to leave the trail at the top of Neffs and hike to the ridge for a spectacular view of Big Cottonwood Canyon. For less ambitious hikers, Neffs has plenty of excellent stopping places to await regrouping. Meet at the Skyline High east lot at 9 am. Rating: 7.6.
- Oct 10 **HIKE: RED BUTTE PEAK** Join Charlie Clapp (262-6422) for an easy foothills hike. Meet at the Fort Douglas Cemetery parking lot off of Chipeta Way in the University Research Park at 9 am. Rating: 3.3.

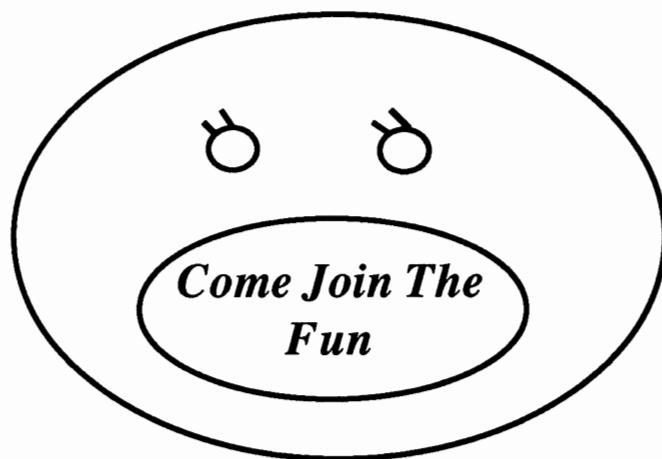
- Oct 13
Wed **BIKE: EMIGRATION CANYON (NTD)** Join Rich Gregerson (467-6247) across from the Hogle Zoo at 5:30 pm for an autumn ride in the canyon. Coffee afterwards. Helmets required.
- Oct 16
Sat **BIKE: GO TO SALT SEA BY BIKE (NTD—35 MI)** Meet Jim Zinanti (967-8578) at 10:00 am at the Smith's located at 4700 So. 4100 W. for a ride to the Great Salt Lake Marina. Helmets required.
- Oct 16 **FAMILY HIKE: LAMBS PASS FROM ELBOW FORK** Enjoy the autumn with Randy Long (943-0244). Meet at the Olympus Hills northeast lot at 10 am. Rating: 3.3.
- Oct 16 **HIKE: MOUNT OLYMPUS** Knick Knickerbocker (565-0910) will tackle this Club favorite, 1993's odd weather permitting. Meet Knick at 9 am at the Mount Olympus trailhead. Rating: 8.6.
- Oct 16-20
Sat-Wed **BIKE TOUR - CALIFORNIA TOUR SOUTH** Two hundred mile bicycle tour over five days through the rural deserts of eastern San Diego and Riverside Counties. Points of interest include historic Temecula, wineries along Rancho California Road, watching the sunset from the outdoor Jacuzzi at Palm Canyon Resort in the Anza-Borrego Desert, home made apple pies in the quaint mountain town of Julian, and finishing in San Diego. The ride is rated intermediate. \$195.00 pays for four nights of camping with hot showers and nightly entertainment, shuttle bus to start of ride and sag wagon to carry your gear. The airfare and food are extra. Call Rick Kirkland (467-3107) for details or Nancy in California (800-228-7041).
- Oct 17
Sun **BIKE: PARLEYS CANYON TO LITTLE MT. (NTD)** Join Rich Gregerson (467-6247) for a ride up Parleys Canyon. At Mountain Dell we will head for Little Mountain and then Cromptons for breakfast. Call in case of inclement weather. Helmets Required.
- Oct 17 **HIKE: BOUNTIFUL TO MORGAN COUNTY RIDGE** Follow Clint Lewis up the grassy (old) pipeline trail north of Holbrook Creek to the Morgan Co./Davis Co. ridge. You'll find beautiful open views of the Great Salt Lake, with 3,500 feet of elevation gain. If the group wishes, we can return down the Sessions Mountains ridge which will add about 800 feet of elevation and several hours to the hike. If there is snow on the ridge line, Clint will require that light snowshoes be packed up. Register with Clint (295-8645) for the meeting place and time. Early breakfast with the group optional.
- Oct 17 **HIKE: SHEEPROCK RANGE EXPLORATORY** Donn Seeley (595-1747) invites you to this obscure but charming West Desert mountain range southeast of Salt Lake. Expect a tough day hike, cross-country on steep terrain (elevations up to 9,273 feet) with potential bushwhacking and/or scrambling. Possible compensations for this work include great views of the Little Sahara sand dunes, an old mining cable car still in the air and the core of Utah's Great Basin country. Meet at 9 am at the 7200 South and I-15 Park 'n' Ride (southeast of the interchange). Estimated rating is about 7.
- Oct 17 **HIKE: STANSBURY ISLAND EXPLORATORY** Ben Everitt (272-7764) plans to explore a new cross-country route to some peaks on the island. You may encounter some scrambling and/or bushwhacking on this moderately strenuous hike. Call to Ben to register.

- Oct 23 Sat **BIKE: MOUNT NEBO LOOP** (MSD—46 MI) This is a one of a kind road bike trip. Join leader, Kathy Hoenig (486-8525), for this steep (4,733 feet of climb) but spectacular vistas bicycle ride. Meet Kathy at 8:30 am at the 5300 S. Park 'n' Ride off of I-15, or at 9:30 am at the McDonalds in Payson. There will be some initial car shuttling to avoid the flat from Nephi back to Payson, but it will mean a more enjoyable experience on the Nebo Loop. Bring your own lunch to eat on the way. Call Kathy in case of inclement weather. Helmets required.
- Oct 23 **LODGE WORK PARTY: For details: Refer to Oct. 9th's Lodge Work Party, page 10.**
- Oct 23 **HIKE: NOTCH PEAK** (rating 7.6) A bristlecone forest, a drop off (the "notch") that is unbelievably clear, sunny, yet cool; a view of the west desert for as far as ... and a perfect place to be during hunting season. It is in the House Range near Delta. We queue up at 6:00 am at the Park 'n' Ride lot on I-15 and 7200 So., be on the trail before 11:00 and searching for Delta's gourmet spot and Soup de Jour by sundown. Wick Miller (1-649-5996).
- Oct 23 **HIKE: NOTCH PEAK VARIATION** Instead of the usual route up from Sawmill Canyon, the variation reaches the ridge north of Notch Peak from Miller Canyon and walks around the yawning gulf of the Notch to the summit. This route provides an amazing view of Notch Peak's north face and visits a number of bristlecone pine groves. There is no trail and the terrain is rough with some bushwhacking, a little scrambling. Meet Donn Seeley (595-1447) at the same place and time as the above hike.
- Oct 24 Sun **BIKE: MORGAN TO MT. GREEN AND BACK** (NTD+—30MI) Join Frank & Joyce Luddington (277-4564) on this mostly level ride around the Morgan Valley. Meet at the southwest parking lot of the State Capital at 8:30 am to carpool or at Riverside Park (125 N. 200 E. in Morgan) at 9:45 am. Lunch will be at the Old Farm Market in Mt.. Green. Call Frank in case of inclement weather. Helmets required.
- Oct 24 **CAVE EXPLORING TRIP** Get away from the hunters by going underground. Our trip will involve a 3-4 hour drive each way stopping for dinner on the way back at Wendover. The cave involves crawling and is not for claustrophobics. A hard hat with a mounted lamp is required which can be rented from the leader. Other equipment will be required, some restrictions apply and the number of participants is limited. No children. Leader: Dale Green, 277-6417.
- Oct 27 Wed **GENERAL MEMBERSHIP MEETING: Agenda to include: participation in service projects, dealing with the Lodge, regulation vs litigation, individual member concerns. Place: Zion's Lutheran Church—Time: 7:30 pm.**
- Oct 29-Nov 1 Fri-Mon **BACKPACK: HAVASU CANYON (GRAND CANYON NAT'L PARK)** Call Rob Seeley to register and for more information (942-8909).
- Oct 30 Sat **SOCIAL: HALLOWEEN DANCE** Potluck begins at 6:00 pm. There will be a costume contest and apple bobbing at 8 pm. Dancing begins about 9 pm. Come join us in costume for dancing. For further information contact Bill Loggins (596-0597).

- Oct 30 Sat **HIKE: CHURCH FORK PEAK** Jerry Hatch (467-7186) tells us that strong children and adolescents will be permitted on this somewhat brushy Mill Creek hike. Meet at 9 am at the Olympus Hills northeast lot. Rating: 5.7.
- Oct 30 **HIKE: HOUNDSTOOTH** This short but steep foothills hike has a very nice view into Deaf Smith Canyon. Meet Hank Winawer (277-1997) at the Big Cottonwood lot at 9 am. Rating: 5.0.
- Oct 31 Sun **HIKE: MOUNT OLYMPUS** Work off that Halloween party hangover with Brian Barkey (583-1205). Brian will not be deterred by a little white stuff and advises you to pack your gaiters and a walking stick. As always on Brian's hikes, dogs are welcome. Meet at 10 am at the new Mount Olympus trailhead near Pete's Rock on Wasatch Drive. Rating: 8.6.
- Oct 31 **HIKE: SILVER ISLAND RANGE EXPLORATORY** Visit these stark, rocky peaks on the west side of the salt flats with Howard Wilkerson (277-1510). He will set a moderate pace. Be prepared for steep, cross-country hiking, possible scrambling. Call Howard to register and get more details. Rating of 7.
- Oct 31 **HIKE: VAN COTT PEAK** Spend the afternoon on the hills above Salt Lake City with Richard Zeamer (355-3751). Meet at 2 pm at the north end of the upper U Med Center lot. Rating: 2.8.
- Nov 6 Sat **HIKE: LEADER'S CHOICE** Carrie Clark (583-1205) will look far and wide for a suitable hard hike, with a rating of 7 or (much) higher, depending on the weather. Call Carrie to register and get details.
- Nov 6 **HIKE: LEADER'S CHOICE** The weather will help determine where Nance Allen (486-0546) will go on this moderate day hike, with an estimated rating of 5. Call Nance to register and get her destination, meeting time and meeting place.
- Nov 7 Sun **HIKE: BIG BEACON** Join Janet Friend on this short, steep hike with a panoramic view of the city. Meet at the Hogle Zoo lot at 9:30 am. Rating: 4.5.
- Nov 7 **HIKE: LEADER'S CHOICE** Cheryl Soshnik (1-649-9008) warns her hike may be dangerous to the health of wimps. Cheryl will choose a hike somewhere in or near Utah with a rating somewhere over or way over 7, depending on hiking conditions. Call Cheryl to register and for full details.
- Nov 11 Thu **BOATING: PERMIT PLANNING PARTY** We'll have a brief get together (8-9 pm) at Randy Klein's (943-5755) to inform everyone about river permit application rules for the 1994 river season. We definitely need a strong showing of applicants. You don't have to be an expert or trip leader to apply. The address is 6974 S. Twin Aspen Cove (2940 E).



Doug Harris takes it easy as Ursula Jochmann uses a drill for the first time. Could it be he thinks he's supervising...hmmmm?



LODGE WORK PARTIES

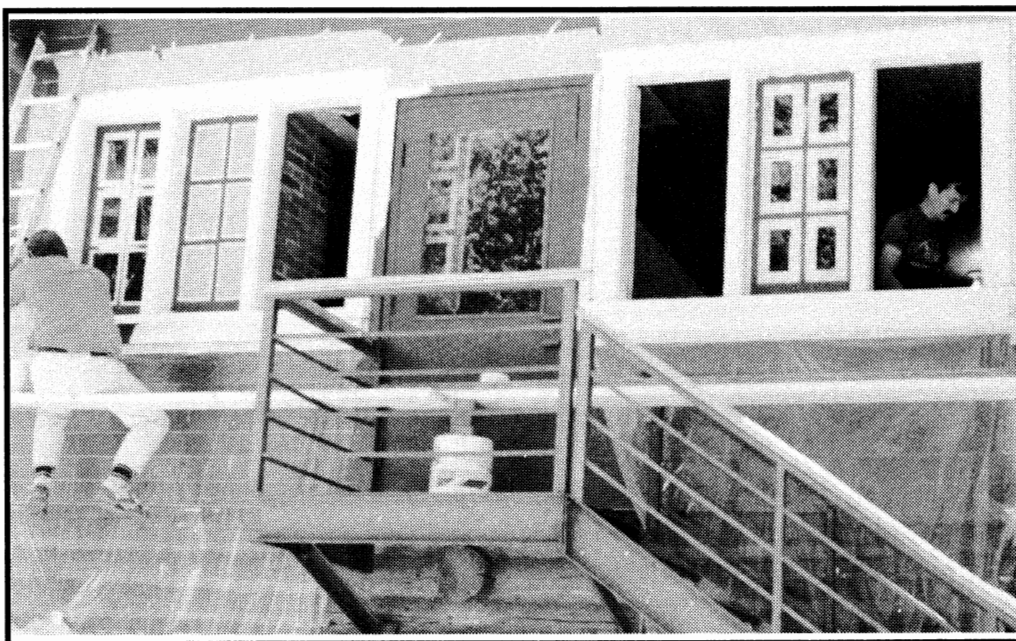
OCT 9TH—OCT 23RD

9 am to dusk

Come for all or part of the day. Lunch and soft drinks provided. Work day participants have free admission to any Club activity that evening.

Details: Rich Osborne (647-0205)
or Bob Myers (485-9209)

Our Club President Jerry Hatch is really helping out on that window. Painter on the scaffolding unidentified.



FROM THE PRESIDENT

by Jerry Hatch

On September 14, I met with the Lodge Committee to discuss our continuing efforts to secure the future of the Lodge for the Club. In order to explain where we are now, let me first give you a brief overview of the problems that we are up against. (It is very difficult to melt this Byzantine monster down into a comprehensible message, but I'll try).

A TWO PRONGED DIFFICULTY

In order for us to continue on in the Lodge we have to renew our lease, which was allowed to lapse a year or two ago. We hold this lease from the Forest Service, which has set some very exacting requirements for renewal. A separate, but related, issue is that the Solitude Improvement District wants us to hook up to the new sewer system. This is bound to be a very expensive and a difficult undertaking for us. (The main connection between the sewer and the lease is that the Board and Trustees of the Club are obviously not going to agree to a major capital improvement unless we can secure a long term lease, —or buy the land).

A PROBLEM OF WATER

Prior to this year, the Club's strategy for dealing with the sewer was to declare: We were a dry lot, and therefore could not be legally forced into hooking up. This assertion is now being called into question by the Solitude Improvement District since the Club has had dipping rights to some water near the Lodge since the nineteen thirties, (remember that undrinkable stuff that once flowed into the kitchen sink?).

It may be the water problem is the most serious difficulty we face because if we are to hook up to the sewer we must have a safe, reliable source of water. Bill Lapsley, the director of the Solitude Improvement District, would like to see us develop our water right, but it is very likely this would be impractical. Vince Desmone, who was Lodge Director for several years and probably

knows as much about private water systems as anyone in the Club, adamantly states that the initial expenses, plus the need for constant monitoring would preclude our developing our own water source. Our other option would be to purchase a water share but the problem is, the Silver Lake Water Company has a limited source, which means it can only serve a very small number of new customers. It simply may be very difficult for us to buy a water share.

OUR LANDLORD

Given the problems we face trying to get water, it might seem to make sense to declare the Lodge a dry lot and begin the legal battles which we would need to fight to make it such. One immediate problem our attorney Tom Berggren has pointed out that we would probably do ourselves grave public relations damage by fighting for what would probably appear to many people to be an environmentally unsound position. Even if we were willing to gamble on the outcome of that fight, it wouldn't do us much good because our landlord, the Forest Service, expects us to hook up to the sewer system as an essential condition for their renewing our lease. They will, I believe, grant us a one year lease while we finalize our plans for hooking up, —but then they mean to force us to comply.

SILVER LININGS

The Lodge Committee is made up of some of the brightest and most dedicated people in the Club. They love the Lodge; they believe we will be able to work our way through this bureaucratic maze and continue to enjoy the building into the next century.

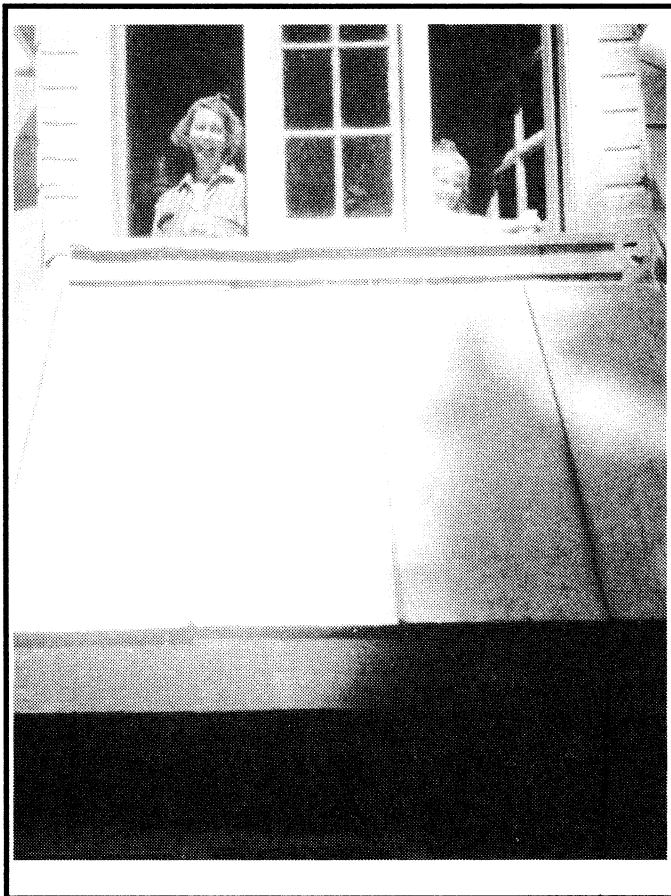
Happily, we have one important government agency pulling for us. The Utah State Historical Society, which placed the Lodge on the National Register of Historic Places about ten years ago, believes we have been good stewards of the

(con't p. 17)

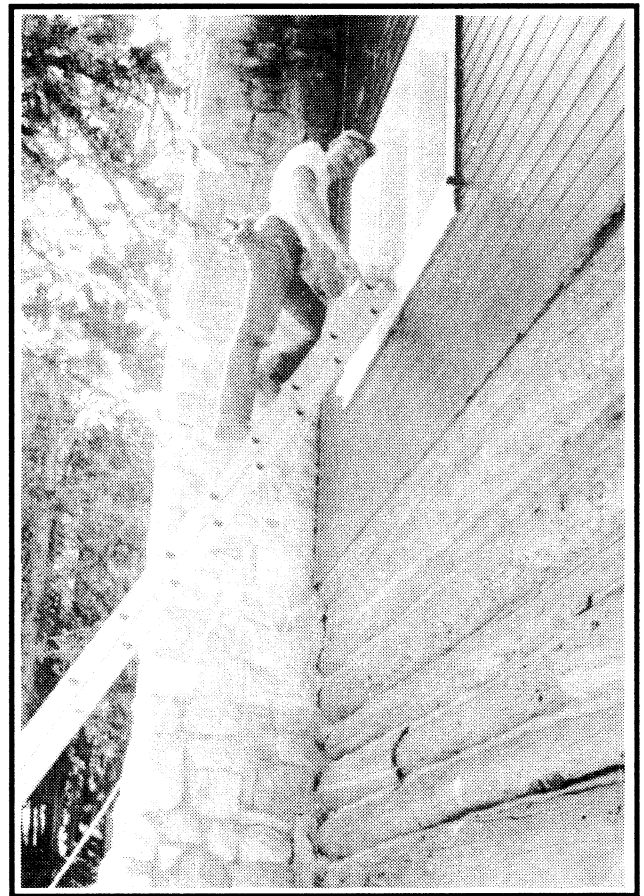
From the President

(con't from p. 16)

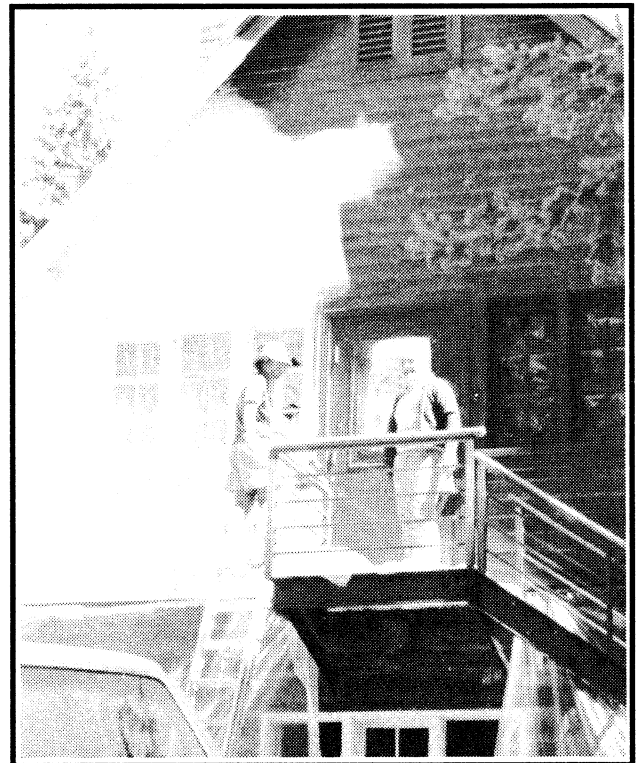
building, and we are, "...to be commended for the excellent manner in which (we) are caring for it." They have real empathy for us and our difficulties in hooking up to the sewer, and believe the Forest Service needs to give us sufficient time to connect, and "...to provide leases of sufficient length for the Club to feel safe and justified in undertaking such costly improvements." Of course, the optimum solution would be the outright purchase of the ground the Lodge stands on. Karin Caldwell, who is in charge of the Lodge Committee, believes a land purchase is by no means a pipe dream. Ownership of the land would not solve all our problems, - but it would give us a much more secure base for dealing with present and future regulatory developments.



After the painting comes the shining up crew, Susan Allen and Josiane Jochmann, on those mullion windows. Are we having fun yet? Yes!!



It's a looong way up for Ken Engstrom to paint a window.



Brian Barkley and Al Brennar painting the west gable of the Lodge.

Saturdays — At the Lodge — with Rich and Bob

by Christine Allred

To some, “work party” connotes a contradiction in terms! Work — on a precious day off? When I could be glorying in a hike, bike, climb, back pack, river run in the spectacular autumn mountain or desert landscapes of Utah? UGGGGGGGGGGGH!

But I didn’t feel that way September 11th as I took a break from pushing, working, and smoothing mortar between the log crevasses in the currently-being-refurbished caretaker’s room at the historic Wasatch Mountain Club Lodge located in Brighton.

The sun filtered through tall evergreen trees warming the cramped muscles in my back and neck; I breathed in crisp air pungent with pine; white clouds scudded and billowed across the blue sea overhead; a lazy insect droned to and fro among the few remaining wild flowers; a bird song was hushed during this mid-afternoon respite but I could anticipate a resumption as evening comes on.

Complimenting the murmuring of the small brook tumbling down to join the larger creek on the edge of Lodge property were the soft conversational tones of my work party companions, new arrivals from the trail clearing crew and Mary Ann Losee’s crew preparing burgers and fixings. How many of them felt the way I did?

“It’s the camaraderie,” said Jerry Hatch, Club President “And since I’ve worked on the Lodge, my appreciation for this building has increased greatly.” Jerry has a mighty deft hand with a brush as he demonstrated an unmatched skill putting bright green paint on the narrow wood strips separating mullions on Lodge windows; most of us working on the same project had laid down reams of masking tape beforehand.

Gaily wielding glass cleaner and paper towels, nine year old Josiane Jochmann reported “This is fun; the building is so old fashioned, I feel like I’m in the olden days.”

Her mom Ursula was getting hands on experience with a drill, helping Doug Harris build a strong handrailing on the emergency exit from the caretaker’s room. Lots of labor above, but later in the day we spotted Jim Bailey shaking his head and snapping a picture of the rock, cinderblock support holding up the end of the ramp. Club member Jim is a structural engineer by profession and has been assisting Lodge Directors Rich Osborne and Bob Myers with determining repair, replacement, and upgrade needs.

Rich is everywhere during the work parties. Although a recent arm injury limits some of his physical participation, he actively coaches and teaches.. “We’re not just looking for cheap labor,” he told me. “You can learn new skills here.” That could be verified by at least half the labor party that day.

Encouragement is something Rich needs to be continually pouring out: Martin Clemans high on a ladder taping plastic sheeting protection over the dormer windows in preparation for Bob Myers spray painting operation, would agree heartily. “I don’t like heights,” he said. Ken Engstrom might have concurred; he was up high on the other side of the building, doing touch up work. (con’t p. 19)

Saturday Work Party

(con't from p.18)

I've been told Bob is on his third stint as a Lodge Director. Along with his enthusiasm, he brings great expertise, a willingness to share skills with those who have mostly thumbs and a great variety of construction tools and equipment. When he gets all "suited up" to spray paint, the overall impression is something escaping from a Steven Spielberg movie.

On this particular Saturday, other Lodge workers included newcomer Nancy Jenkins (who couldn't hike because of a knee injury), Mary Fox, Al Brennan, Susan Allen, Kyle Jones, and Kathy (oops, didn't get her last name but she's the dark haired gal with slight accent). Kathy and I were particularly pleased when Bob judged our mortar work "not bad" for first timers.

Cleanup time came as the sun began to dip below the surrounding peaks; fiddle and bagpipe music floated on the air as band members of Loch and Key warmed up for the annual John Muir Social and Dance. Some of us had brought a change of clothes as free admission to that evening's activity is a benny for workday participation.

As this account comes to a close, it occurred to me how many people are willing to pay megabucks for a similar service-oriented learning experience, in a magnificent setting, meals included, with the added plus of like-minded beings as co-workers.

ATTENTION ALL CLUB MEMBERS — You, your friends and family members can get all this — FOR FREE — on any Club workday! October sessions on the 9th and 23rd will include wood cutting and stacking, replacing some doors, mortaring and chinking of the log walls and lots more only Rich (647-0205) and Bob (485-9209) know about. Give them a call for specifics and what tools to bring; I found both lightweight garden type, and heavy leather gloves, indispensable for some of the chores assigned.

*Installing new jamb
in south door of
Lodge and having a
great time!
Lodge photos by
B. Myers.*



FROM THE HIKING DIRECTOR

by Donn Seeley

It's fall and we're still scheduling hikes. In some years, the white stuff buries the state in mid-October, but in other years lower and drier elevations remain hikable through November or even December. If the weather still looks good in mid-October when the next publication deadline arrives, we may schedule a few more hikes in November. Give me a call (595-1747) if you would like to lead one.

Early and late in the hiking season, the Club often schedules cross-country or exploratory hikes to locations in the West Desert. Conditions on these hikes can be very different from hikes on trails in the Wasatch foothills. I recommend boots and long pants on cross-country hikes. Even short cross-country hikes can be strenuous when the slopes are steep so don't underestimate the difficulty of such hikes.

I have received some feedback from Club members on last month's column in which I discussed potential liability problems with private hikes which cross paths with Club hikes. Knick

Knickerbocker has experienced this situation as a leader of a private hike and points out that the Club can't and shouldn't dictate to people acting independently of the Club in planning a hike. I sympathize with this view (and apologize to Knick if he felt slighted by last month's remarks); the Club has no power to control private trips and shouldn't interfere. However, I still feel that potential problems are present. There must be a clear distinction between people who have signed the release form for a Club hike, and people who have not, or else the release form has no force. There's no need to be obnoxious about this on the trail, of course, but people must realize that the Club and its members could stand to lose if an accident happens to someone who claims they are on a Club trip when they aren't. I will note that Club trips are a little safer for leaders in this way than private trips, since Club trip participants must sign a form recognizing the inherent dangers in hiking activities, while private trip members merely have an understanding. If you have more comments on these issues, please bring them to the **General Membership meeting on October 27th.**

ADOPT*A*HIGHWAY*CLEANUP

Saturday morning, Oct. 9, at 9:00 am, we need Club members to assist in cleaning up the stretch of highway between I-215 and the mouth of Big Cottonwood Canyon. Children 11 and up may participate. Vests, trash bags, juice, pop provided, bring your own gloves and enthusiasm. Join Mark and Linda Feller at the west end of the Park & Ride of Big Cottonwood Canyon.

FROM MOUNTAINEERING DIRECTOR

The First Fall

by Kyle Williams

It's interesting how an event replays itself in our memories: in slow motion and tremendous detail. Every movement, every detail, every sound is in the sharpest focus, like the dull sound of that chock popping out.

Of course I've fallen before. On top ropes, even short leader falls, but the anchor I would place before the hard moves always caught me so there was little distance covered, no harm—no foul. Then came the sound of that piece popping out. THAT signaled my first "real" fall.

I was moving across a steep ramp with a vertical wall to my left. I had clipped a bolt hanger, moved on, and started up a crack in the vertical wall, placing an anchor in the crack. The small chock seemed solid, and probably was, at least for a straight downward pull. But I was on a dead (no pun intended) vertical wall so if I fell I would be moving away from the wall, putting an outward as well as downward pull on the anchor. You see, I've studied this all out in that slo-mo phenomenon I mentioned earlier. "Hind-sight is 20/20 vision" and all that.

My foot slipped first followed by a left hand jam in the crack, and down I went. No problem, I was chest high on the piece I had just placed; it would catch me. There seemed to be a momentary slow down as my body weight settled onto the anchor, and then that popping sound.

Janet, my belayer, may need to set the record straight, but I believe I actually called out "FALLING" instead of the more natural "OH SHIT!" signal of distress. I hit the steep ramp and rolled/slid toward the lip of disaster until the rope clipped to the bolt finally brought me to a stop.

I was very lucky as my only injuries were a bruised hip (from the car keys in my pocket) and a bruised hand. That's the problem when you fall while climbing at my moderate level: there's so much to bounce off of on the

way down! (You 5.12 climbers only hit air and bungee comfortable on the rope. Oh well, some day....)

So what is the point to this rambling on about a totally embarrassing fall? Well, it really opened my eyes again about the importance of how to place anchors, anticipating the direction of pull. I had become lazy and got bit in the butt because of it. As a result I have "gone back to school" as a student of anchors, spending hours on the ground practicing placements of all kinds. With so many new folks climbing these days, let me encourage all of you to study and practice placing anchors. Don't be up on a climb to start your practicing! Just stand at the base of a cliff and try different placements. Practice anticipating what direction will pull on the anchors in the event of a fall. Practice linking 2-3 anchors together with equalizing slings. Practice a lot and then practice some more! It's important to practice with an experienced partner who can critique your work and help you learn placement properly.

I learned a lot from John Long's book "Climbing Anchors". It shows dozens of common placements and set-ups and critiques the pros and cons of each. Also, there is excellent treatment on the subject in "Mountaineering, The Freedom of the Hills" by Seattle Mountaineers. As fate would have it, the WMC has a grundle of these available for \$15 each (regularly \$28). This is a great buy on the best text book available on all aspects of mountaineering. If you want one, call me at 576-1579.

We've had a great climbing summer. A lot of climbers have been active in Thursday night climbing which has resulted in lots of weekend trips happening privately. (Remember my little discourse earlier this spring? I love it when a plan works!) As the winter sets in, don't forget that Pete's Rock is good for climbing all winter on a sunny day; the climbing gyms offer good practice and you can do fingertip pull-ups on a door frame (reinforce it first) all winter long. The ice-falls will set up soon and the truly insane will be out with a crazy look in their eyes calling out "On Belay" as the spin-drift swirls around them.....see you there!!



SPIRIT OF THE WILDERNESS, PAINTING BY DEAN MILLMAN
FROM THE COLLECTION OF MR. & MRS. LEONARD LEWIS

THE SPIRIT OF UTAH WILDERNESS

An art exhibit and sale to benefit
THE UTAH WILDERNESS COALITION
Honorary Chairman: Ward Roylance

OCTOBER 8-9, 1993

Tivoli Gallery
255 South State Street, Salt Lake City, Utah 84111
(801)521-6288

TRIP TALKS

Deseret Peak Hike

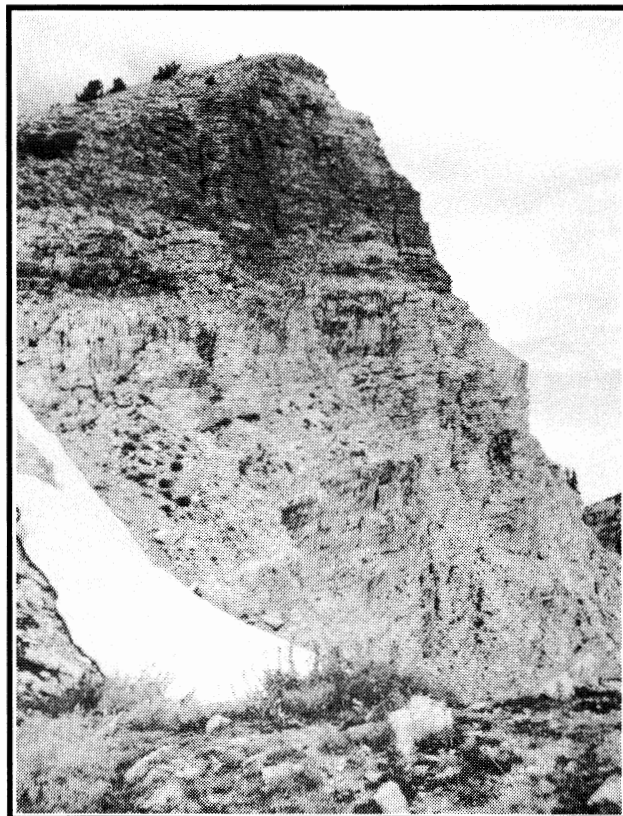
September 4

by Mohamed G. Abdallah and Nadine Taylor

September 4th was a perfect example of a late summer day to accomplish the Deseret Peak hike ascent to a 11,031' summit in the Stansbury Range. Thirteen rugged, adventurous individuals were lead by Chris Venizelos to this unexpected forest in the desert west of Salt Lake (even west of Tooele).

At the trail head, Mohamed, an avid hiker from Egypt, feeling very comfortable in his natural environment, took off until he got to the peak where the rest of the group joined him for lunch and conversation. Unexpectedly the WMC hikers met other hikers along this route. Mohamed met two co-workers from his company and a young lady classmate from their rock climbing days.

This Labor Day weekend the weather was perfect and the trail excellent. Even so, Mohamed decided to take a challenging shortcut on the descent. The entire group followed him, adding adventure and spice to the hike, while searching for the actual trail and having some additional rock scrambling. The group was well matched in their abilities, pace and hiking expertise. We added approximately an additional hour of fun and flavor to the hike because of this stimulating detour.



Hikers front to back, l to r: Steve Myers, Chris Venizelos, Mohamed Abdallah, Floyd Shiery, Tom Fulton, Nadine Taylor, Wan-Jen Horng, Ann Wechsler, Leslie Blackham, Louise Rausch, David Christensen, Roger Upwall, and Lucy Rickett. Above: Peak southeast of Deseret Peak. Photos by Chris Venizelos

ABSAROKA BEARTOOTH WILDERNESS BACKPACK

August 12-21

by Carrie Clark

We left town Friday night, camping somewhere along a dirt road just south of West Yellowstone. We fell asleep under a meteor studded sky and awakened early Saturday morning by a chortling flock of sandhill cranes (a species that UWA has been fighting to protect from hunters' guns). A pair of them took wing, perching in a tree close by our tents. Fully extended in flight, these beauties are elegant, slender, graceful. I surmised that this timely display augured a terrific trip. I proved to be right.

We arrived at our trailhead just in time to be thoroughly dampened by an afternoon thundershower. (Only Gayle and Mike, who were running the car shuttle, escaped the drenching.) Once the rain let up we began hiking, but after 3 short miles, another shower prompted us to set up camp hurriedly, leaving 14 miles of uphill grind for the next day.

Although most of our packs weighed in at over 59 pounds, and Gayle and Chris inadvertently dunked themselves at a slippery stream crossing, we still reached our destination, Wounded Man Lake, in good time and in good spirits on Sunday afternoon. Chris earned special commendation for his hiking prowess. All morning he had felt draggy. In desperation he gulped down an entire sausage at lunch, then spontaneously steamed surge of sausage power.

A serene lake awaited us at the crest of that day's long climb. This had to be Wounded Man Lake! I stopped, eager to drop my burdensome pack. Gayle, however, wondered whether it might be Man Killer Lake instead. Mark corrected our confusion, explaining that this was merely some nameless gem, so we had better keep going. The one point we all agreed on was that the murky black cloud dumping sheets of rain on the surrounding peaks marked the outer peripheries of the Great Metaphysical Doughnut. We suspected it was about to engulf us, so without delay we tramped onward, reaching Wounded Man just as the storm did. We hastily crowded into a semi-protected site, squeezing our tents so closely together that it reminded Mark of a summer camp dormitory.

Later that evening I spotted him on the other side of the creek in bloodhound position, nose to ground and butt in air. Fearing he'd gone berserk from the overcrowded

conditions, I rushed to administer first aid. I discovered instead that he was in hot pursuit of some evasive wildflowers, and helped him key out a dozen species in a patch of meadow only a few feet square.

Monday morning dawned fresh and clear, one of those days I wish I could imprint indelibly in my mind and soul. Inspired by the long-awaited sunshine, Mike and we four women set off for Columbine Pass, leaving Chris and Mark to tend the tents, food and flowers. We encountered a solo backpacker, and after exchanging a few words we told him where we lived. He seemed intrigued. Janet claims that he walked a few yards past us, then gazed back over his shoulder at this single fit and trim dude with his four intrepid "wives". Who knows? Maybe that lonely hiker will move to Salt Lake soon. I'll look for him at Club outings.

Soon Gayle and Janet divorced themselves from Mike's merry foursome, stopping off on Lake Plateau for a bit of rest and relaxation. Jaynee and I remained faithful, ascending with Mike to Columbine Pass. I bounced over the high tundra, beholding Montana's Big Sky, by now thick once more with rolling, boiling steel grey thunder clouds. The big open meadows were flecked with Alpine flowerlets and sparkling lakes, and the even bigger peaks circumscribed us with their jagged, snowy silence.

Meanwhile, back at the camp, Mark had sniffed out a half dozen more species of those wily wildflowers and Chris had nearly frozen while climbing an adjacent mini-peak. They greeted us with a roaring White Man campfire. We were grateful; the temperature was plummeting and the wind was escalating. We escaped the discomfort by retiring early.

Pummeled by sleet for most of the night, we were unwilling to leave our warm bags in the morning. Eventually we emerged, and with the help of Mark's impeccable route-finding skills, followed the abandoned and partially overgrown trail to Lake Surrender. The men folk had hoped to find Lake Submission too—but alas, no such luck. Sorry, guys.

On Wednesday, we moved camp to a new drainage. That afternoon, Chris, Gayle and I tackled Columbine Pass (this time from the opposite side). Chris renamed

(con't p. 25)

Absaroka Beartooth Wilderness Backpack

(con't from p. 24)

it Concubine Pass and packed an emergency sausage in case the weather should force the three of us to bivvy. To his dismay, sunshine prevailed. In fact, the warmth enticed us into a brief, bracing dip in Lake Favonius on the way down. The chilling water stung my sweaty skin. Energized by the delightful torture, I let loose with several primal screams.

Meanwhile, Mark had sprinted up and down Jordan Peak, stalked some additional flowers, and even bagged some gnarly thistles from which he graciously concocted a salad for us all. Mike surprised us by catching 5 cutthroat trout which Janet grilled for us with wild onions. The trout were so large that she ran out of foil and had to roast the last one in a used Mountain House bag. (I don't recommend this method!) I can still picture that pathetic fish face, with its gaping mouth and bewildered eye drooping from the bag. Neither Gayle nor I could bring ourselves to partake of the feast.

It took us all of Thursday afternoon and Friday morning to hike out, winding our way through 18 miles of the charred ruins of a once flourishing lodge pole pine forest. Their skeletal remains surrounded by lush, knee-high greenery provided a melancholy, poignant reminder of the fragile yet enduring nature of the wilderness.

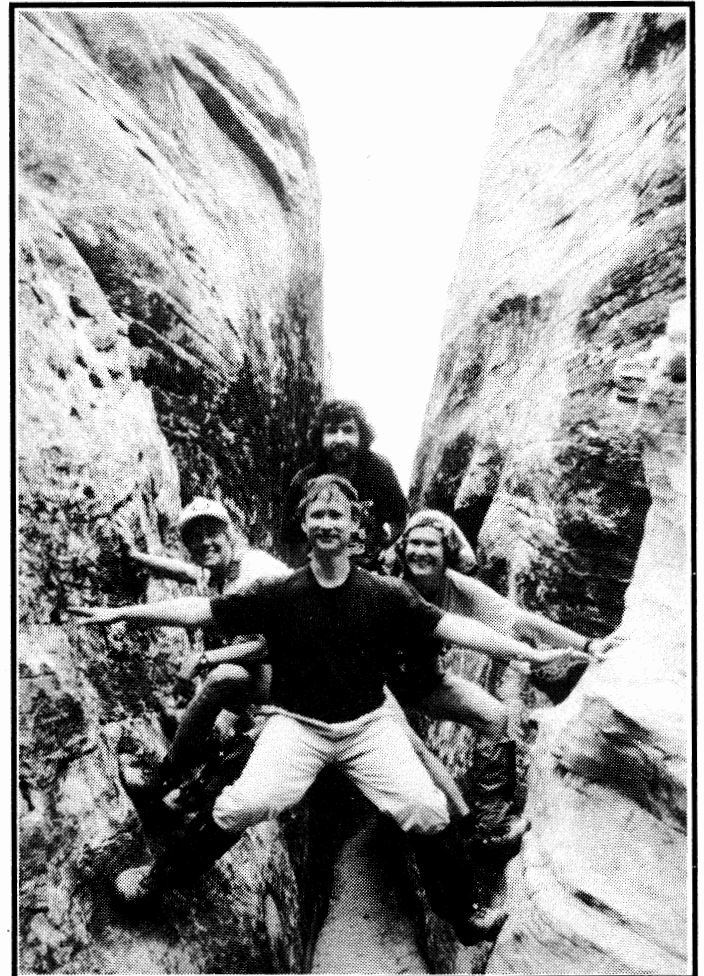
In the twilight, we drove home through Yellowstone's steamy geyser country, watching the steadily falling sheets of rain from the cozy warmth of our cars. Chris tried to persuade us to share his last sausage in commemoration of a fine trip, but he could conjure up no assent. As an alternative, Mike supplied food for thought, quipping that this trip had indeed been close to ideal: tough enough for the women yet gentle enough for the men!.

Participants: Mike Budig (leader), Carrie Clark, Janet Friend, Jaynee Levy, Mark McKenzie, Gayle Stockslager, Chris Winter.

The Lodge Needs You

Oct 9th and 23rd

*Join in the fun!
Meet with great people!
Show off your skills!
It's Lodge Work Party
Time!!*



Claude Velasco, Carrie Clark, Carol Masheter and Mark McKenzie having a high time on the Joint Trail in Canyonlands National Park. Photo by passer-by.

Albion Basin to Catherine Pass Hike

August 29

by Robert Fitzsimmons and Dolores Case
assisted by Richard Zeamer

Sixteen of us, including our leader Richard Zeamer, met at the parking lot at the entrance of Big Cottonwood Canyon. Over half of us were newcomers, the rest were seasoned Wasatch Mountain Clubbers and we all hit it off famously. We were a cheerful and lively bunch.

The sign-up sheet went around, our concession to this litigation-prone society. Gerhard Hegewald, Bob Fitzsimmons, his sister Terri Fitzsimmons, Linda Southam, Dolores Case, Paul Edlefsen, Mary Wise, Lezlee Beeton, Sharlene Hoggan, Vicki Sippel, Sebastian Knight, Dolina Taylor, Larry Simmons, John Deems and Patricia Billings, all unknowingly agreed to "use common sense in preserving our safety and the safety of others".

After Richard carefully explained that this hike would be up in Little Cottonwood Canyon, not "Big", we carpooled the thirteen miles, continuing onto the dirt road going up into the high end of the canyon, to the Albion Basin.

While waiting for lagcards to arrive our leader gave us a very interesting nutshell lesson in geology:

BRIEF GEOLOGIC HISTORY OF UTAH AND THE WASATCH

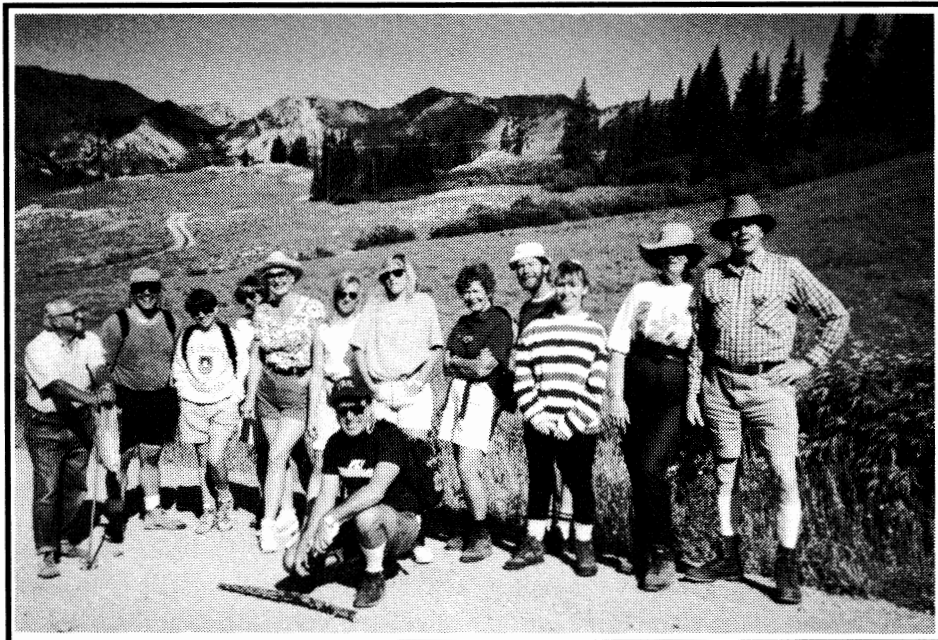
by Richard J. Zeamer

A struggle between the Pacific Ocean and our primitive continent created all this.

It began before the Cambrian Period (first shellfish, 500 million years ago). The Pacific Ocean had reached central Utah. The continent resisted, dumping rocks and mud and filling up the shore waters.

But starting in the Mississippian period (lizards and land plants, 360 to 320 million years ago), the Pacific struck back; its moving bottom pushed the huge deposits against the Utah shore, folding and raising new mountains in western Utah and Nevada. From these, a massive erosion outwash loaded the eastern Utah plains with thick beds of minerals and future rock.

Next, in the Mesozoic Era (age of dinosaurs, 245 to 66 million years ago), the Pacific shoved in more ocean-bottom layers plus off-shore islands. These became parts of Nevada and California. The Pacific kept up the land-moving and mountain-building pressures into the Cenozoic Era (age of mammals, 66 million years ago to present). Then, about 25 million years ago (Oligocene) its full forces reached eastern Utah, finishing compressing and folding the thick-bedded plains and pushing up our Wasatch Mountains. Just look at the results!



Start of Albion Basin to Catherine Pass Hike. Photo by R. Zeamer

Albion Basin to Catherine Pass Hike

(con't from p.26)

In recent times (Pleistocene, the last million years) the Pacific changed its tactics. It stopped pushing, the mountains relaxed and the valleys widened. Next, geologists expect the Pacific Ocean to invade through the Gulf of Lower California and eventually reach the Salt Lake Desert. But don't rush to buy shore-front real estate as the Pacific isn't predicted to reach Knolls and Wendover for at least a million years.

(End of the brief Utah geologic history.)

Albion Basin is a high valley with broad meadows and a grove that contains a campground walled in by massive ridges and peaks. The latter, including Sugarloaf, Devils Castle, Sunset Peak and Mount Tuscarora, are a grand high-mountain landscape, a mighty vista we enjoyed.

Our sixteen energetic hikers ascended the short, 1-1/2 mile, but steep, trail to Catherine Pass for an elevation gain of about 800 feet. An abundance of lovely wild flowers bloomed all along the trail; among them were hartleat amica, penstemon, Indian paintbrush, buttercups, wild daisies, sunflowers, lupine and dainty wild geraniums of various white and pinish lavender.

Richard was helpful in identifying some of the wild flowers. He was also helpful in stopping the hike for picture taking, which gave us a chance to catch our breath.

When we finally reached the ridge (Catherine Pass), at 10,200 feet, we looked down on beautiful Lake Catherine and the trail leading to Brighton. The beautiful view, surprisingly, was the same as the photo on the cover of our Wasatch Trails pocket guidebook by Betty Bottcher! Also in our view were the impressive Sunset and Pioneer Peaks.

Sunset Peak was close by, just a 30-minute ridge walk away. Four hikers, Larry, Lezlee, Sharlene and Dolina, elected to climb it and signed out on the sign-up sheet. They wasted not time on their extra hike and rejoined us before we returned to the parking lot down in Albion Basin.

The trail was steep, and for those with smooth tread shoes, difficult. The dry sand and pebbles on the ground made slipping easy, and after a few slips many of these hikers left the trail and walked down through the bushes and vegetation. We recommend, even for easy hikes, that you wear shoes with grooved anti-slip treads.

This was a good hike with a fun bunch and plenty of chit—chat along the way leaving pleasant memories.

Dry Creek Falls

August 15

by Kip Yost

These falls are located in a fantastically beautiful and seldom visited area of Dry Creek Canyon just about 1/4 mile off of the horse trail into American Fork Canyon. The hike is unrated but we decided it was about a 3.

As hikes go, this one was great! Beautiful weather, fantastic company and a gorgeous, thundering collection of waterfalls with sparkling emerald green pools of water beneath. I honestly felt sorry for anyone who wasn't with us. Even on the best days, however, strange things can happen and one of our fine group inadvertently took a side trail that led further up the canyon. A short search was required, but we recovered our missing companion in short order and in good spirits. Hey, the whole canyon is beautiful! You really can't find a bad trail!

Our photographer was the exuberant Terri Fitzsimmons and our other participants were Lyn Christiansen, Merrill Ford, Larry Schumer, Bill Loggins, Teresa Sudol, Patrick Van Hooser, Pat Briggs, Judy Romesburg, Kerry Romesburg, R. Scott Poppen. (ED note: I couldn't find and photographs of this group.)

The Haunted Saw Mill

by Monty Young

About two miles up from the mouth of Big Cottonwood Canyon, (the present site of The Birches Picnic Area), there used to be a saw mill built by Archibald Gardner in the 1870's. His son Reuben Gardner worked there and witnessed "hauntings". Reuben's niece, Clara Richards, told me about some of the mysterious happenings which were told to her. (Clara was a neighbor of mine who lived well into her 90's).

One of Reuben's jobs was that of cook. He would prepare bread dough for baking and set it out to raise, but when he came back, the dough would be turned upside down. They could find no one around who could have done this, yet it happened many times.

On another occasion when the workers had finished work for the day, they gathered in one of the cabins for the evening. They tossed their hats into the corner and left them there. The next morning the first man awake started a fire in the stove of the mill. The stove smoked so badly they could hardly breathe. One man went up on the roof to see what could have fallen into the chimney. He found that all of the mens' hats had been forced down the chimney preventing the smoke from escaping. At first they thought someone was playing a practical joke on them, but upon investigation, no man knew (sic: or admitted) anything about it.

One night after all operations at the mill had ceased for the day and the men had all gone to bed, the sound of the saw mill running full blast awakened them. They jumped from their bunks quickly and ran into the mill. When they opened the door, all was silent...nothing...the machinery no longer was operating. As soon as they closed the door, the sound was heard again....and continued until daylight.

An incident occurred when some men from the mill went into Salt Lake City to purchase some files they needed to sharpen the saw at the mill. (These files were very heavy, requiring three men to lift them). Soon after being delivered to the mill, they turned up missing; no one could locate them. Years later when a huge pile of slabs lying outside of the mill was sold and removed, the lost milling files were found way under the slabs. Not one man, nor a group of men, could have placed that box of files where it was found without having to have worked days to first remove the slabs.

The situation worsened; whenever a tool was laid down, it would disappear. The mood at the saw mill became so fearful, Archibald Gardner asked Brigham Young what to do about it, Brigham replied, "It was the work of the devil and his angels (the Gadianton Robbers) and must not be permitted to go on." (These Gadianton Robbers were members of a most evil, secret organization that had once lived here upon this American continent before and after Christ. They used to hole up in the mountains and sweep down into the valleys and hurt the local people. It is believed that when they died, their evil spirits still haunted their strongholds. This particular spot could have been one of their dwelling places).

President Brigham Young dispatched some of the General Authorities to go to the mill to rebuke the evil spirits and command them to cease their operations and depart. After this was done, no more trouble was encountered.

So the next time you go up Big Cottonwood Canyon and pass by the Birches Picnic Area, **BEWARE!** Who knows when those evil spirits might return and haunt **YOOOOOU!**

Bulletin

LODGE USER FEES CHANGE

On September 1, 1993 the "Board of Directors" approved the change of user fees for all future Wasatch Mountain Club Lodge bookings & events.



Bulletin by Knick



The WMC LODGE in Brighton, may be rented for family reunions, weddings, office retreats or any other pleasant mountain experience. For anyone wanting to reserve the Lodge for their group for overnight or day use, the rates will be as follows:

OVERNIGHT	\$200 per night
PART DAY RATE	\$100
(PART DAY 6PM-12/MIDNIGHT or 8AM-5PM)	
(PART DAY - MONDAY THRU THURSDAY ONLY)	
WMC SOCIAL EVENT	\$2 for Lodge use
WMC SOCIAL OVERNIGHT	\$3 per person

NOTE: For WMC dances or some other social activity at the Lodge there may also be addition charges to help offset the cost of hiring a band, etc. All summer project participants (lodge, trail, or highway cleanup) are provided free lunch and get into that evening's WMC social event "FREE".

For further information or booking requests, PLEASE phone Rich Osborne • 1-647-0205

MORE TRIP TALKS

GRANDVIEW PEAK HIKE

August 22 1993

by Dale Thompson

I'm writing up this hike myself in order to keep participants from submitting a less flattering version.

The first problem: The hike's rating. The Club has not rated this hike, but other earlier published ratings included Grandview approached from Mueller Park in Bountiful, with round-trip miles of 13.8, rated at 10.9. Our group started at the paved road in North Canyon in North Salt Lake. I estimated it to be at least two round-trip miles shorter, for a rating of 9 or 10. During the hike, however, we agreed the total distance was closer to 15 to 18 miles. The route begins on a four-wheel-drive road, then follows a bike path constructed for motorbikes to Rudy's Flat. Bill Goldberg biked these segments and reported an odometer gain of nearly 3.9 miles. The bike path has so many switchbacks its actual distance is probably nearly twice the distance a crow—or in this case a vulture—might fly. At 1:30 most of us were still a mile from Grandview and, due to time constraints, had to turn back. It would be well for a hike such as this one to meet as early as 7 am.

The second problem: The variety of ways one can get lost. Mentally one might imagine a divide between two canyons such as City Creek and North Canyon merging into a single, knife-edged ridge; however, in the lower foothills this ridge actually consists of a number of misleading spurs and outright dirty tricks. The trail, much less used than those in the major canyons, is sometimes faint or overgrown. Going up was easy, but coming back one must be alert for two points where, forsaking the apparent trail that continues along the ridge (as well as one's intuition), one must turn to the north to drop down the ridge where the true trail is visible only below. Nearly everyone managed to get off the trail at some point or another, resulting at best in backtracking, and at worst an

extra hour or two of bushwhacking, as well as vilification of the hike leader. Future groups would be advised to stop both times a ridge is reached in order to fix landmarks, such as the burnt tree with a double trunk sawed neatly off, on the higher ridge of Big Black Mountain.

From this ridge we soon crossed the summit with USGS markers labeled "Burro," above the Burro mine, with still another two or three miles to go to Grandview. Despite my attempt to eliminate repeated ascents and descents by dropping down one side, the easiest route is simply to stay as close to the top of the ridge as possible. There is no exposure.

Apart from taking longer than expected, particularly for those who entered unexpectedly into wilderness (and found themselves allergic to it), the hike was a refreshing change from the usual canyons. Because of its lower elevation (Grandview at only 9,410'), this hike is more suited for spring and fall, but because of unseasonably cool weather, it remained pleasant and green. In fact its first half, crossing the north slope of the Ensign/City Creek ridge, is a rare treat: cool forests of aspen and pine, a profusion of wildflowers, and paradisiacal green gullies filled with waist-high foliage. Even the higher ridge remained green and diverse, with interesting views of the stone-scarred, seldom hiked mountains east of Bountiful. Twin rattlers, one at least three inches in diameter, were found nesting under the gray-black rock of the ridge's spine. From Grandview one has a good view of upper City Creek, as well as the ridges of Hardscrabble and Mountain Dell Creeks.

Other participants: John Mueller, Hank Winawer, Kathy DeView, Kathy Hoenig, Brad Yates, William Thompson, Eliot Thompson, Jeremie Bernard, Monty Young, and Bill Goldberg.

TWIN LAKES PASS

August 7 1993

by Trip Leader Randy Long

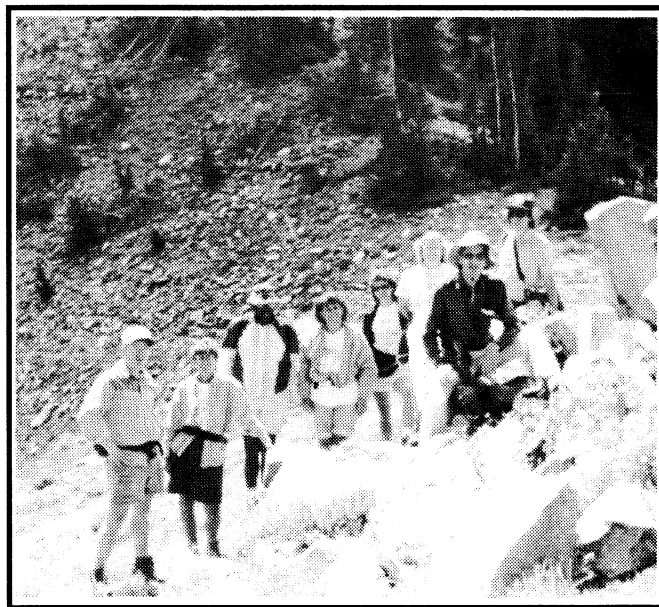
Twin Lakes Pass, the beginners hike on today's schedule, was one of the first hikes I didn't have to change or reschedule due to snow or cancel all together due to weather. Any cheers out there?

The forecast did call for rain, however, so I asked everybody to bring food, water, and rain gear. Unfortunately I had to turn two people back for not having any. One shouldn't expect the sky to be clear and warm at 10,000 feet in the mountains all day just because it's clear in the valley at 4,500 feet when you leave home.

Today we encountered no rain though, (just partly cloudy). We had no problem with snow either, although we saw some on Mount Wolverine and in Wolverine cirque, which added to the scenery, and we all really enjoyed every bit of the hike. As we hiked up the trail from Silver Lake, I told everybody about the two spectacular overlooks, and asked them to regroup at the Twin Lakes.

Some people may wonder where the name Twin Lakes came from. Before the dam was built, two smaller lakes resided there giving its name: Twin Lakes. When the dam was built, the name was simply kept. That also gives a clue to its shape which resembles an hour glass or bow tie.

My apologies to two new participants that I missed signing their applications. Participants enjoying this hike: Bill Baranowski, Sandi Barela, Craig Olson, Pam Olson, Alex Ranney, Judy Romesburg, John Shavers, Cheryl VanVoorhis.



(Photo by Randy Long of the hikers on his trip.)

GREENS BASIN

August 21 1993

by Tom Sernka

On an unusually cool and wet morning in late August, Dean Withrow led a group of us intrepid hikers on the "easy" hike up Days Fork to Greens Basin in Big Cottonwood Canyon. Looking up that steep chute at the onset of the trail, we would have described the difficulty in slightly stronger terms! As we eagerly anticipated, wildflowers greeted us all along the way. The many included violet fleabane, fiery Indian paintbrush, and the deadly white hemlock. The open meadows were a sea of cone flowers, one of those DYC's (damn yellow composites) that lack ray petals and look like short brown cattails. Wet and cool mushroom weather prevailed and we spotted many of these fungi newly emerged. Unfor-

tunately (or perhaps fortunately), we did not encounter any bear or cougar on this hike. Our greatest risk was skinning our knees while climbing over the many uprooted trees that had fallen across the trail.

In some ways the most enjoyable aspect of the hike was the social interaction that happens so naturally on many of the hikes in the Club. We really are quite a homogeneous and compatible group with many common experiences and interests! (It's no wonder that some members decide to extend the fun and get married.) Our group was just about the right size for many engaging conversations both along the trail and seated on "The Fallen Log" at Greens Basin.

(con't p. 32)

Greens Basin

(con't from p. 31)

Personally, I wanted to return to Greens Basin this summer just to see it for the first time! On a snowshoe hike led by Knick Knickerbocker last winter, we struggled over the trail surrounded by ten feet of snow. When we tired and the snow became an obstacle, Knick declared the grove of trees around us was Greens Basin and we could stop for lunch and then return! We were only about a quarter mile short at that point, but we were all grateful. It was all the more satisfying to see Greens Basin all green on this summer hike.

Participants: Tammie Atkin, Bernie Sabato, Mary Wise, Patti Truax, Lyn Nall, Donna Lynn Sorenson-Pierce, Dolores Taylor, John Shavers, Camille Pierce-McCaig, Sandi Barela, Tim Seeley, Kathy Seeley, Martin McGregor, Conley Adams, Dean Withrow Tom Sernka, scribe.

WESTWATER CANYON RIVER TRIP

by Siefried and Donna Altinger

The Westwater Canyon river trip had a variety of river craft challenging the swift Colorado: 2 paddle rafts, 1 oar rig, 1 canoe, and 2 kayaks. Saturday morning this group wasted no time in getting started and jumping to the task of rigging the crafts as the sun and temperatures climbed. Trip leader Janet Embry put her order in for good weather and kept her success record perfect as the weather for the entire trip remained brilliant.

The river was kind at the start with only small rapids up until lunch. At the lunch stop we had an interesting hike to a small waterfall where we discovered a nice pool. Many of us took time for a dip and dive here. A planning and strategy session followed lunch since from here, the "real" rapids were to start.

Westwater Trip

(con't)

he first set of rapids were a lot of fun and helped sharpen the skills we would need for the challenge of the infamous "Skull" with its "Room of Doom". All the craft successfully pulled over before "Skull" to scout it. The kayaks and canoe showed their skills and made it look easy. The first raft made a mistake and ran right into the hole and narrowly escaped the "Room of Doom". Tony Ackerman then guided the oar rig with the same precision as the kayaks and canoe. The second raft also made it look easy. All in all, a real success: no flips and everyone stayed on board. The next rapid, "Sock-It-To-Me" was where a sacrifice to the river took place as one of the scribes, (Donna), took an unexpected swim and lost her hat before a crew rescued her. Twenty minutes later her hat amazingly and unexpectedly resurfaced but disappeared before we could recover it.

A calm stretch of water to the campsite provided all a chance to swim and cool off from the hot temperatures. Boat captain Chris Rowins abandoned ship to try some "kayak walking". This unique skill became really fascinating when Jim Gibson allowed Chris to walk on the bottom of his kayak. Time obviously limited how long Chris walked on the kayak by Jim's ability to hold his breath.

A happy hour with Chuck Denton's cherry bombs and Pat Perry's punch was followed by a Mexican style dinner. A beautiful, clear, warm evening, lit up by a full moon and the echo of Kathy McKay playing a native American flute, made for a natural, peaceful end to a day on the river. A few hours of paddling in the morning and lunch at the river rats haven, Rays Tavern, completed a great river trip for all.

Participants: Greg and Carol Grant, Chuck Denton, Dorthea Eiting, Chris Rowins, Tony Ackerman, Connie Miller, Bob Hannon, Pat Perry, Jim Gibson, Kathy McKay, Jane Wallace, Janet Embry (trip leader), Donna and Ziggy Altinger (scribes).

UINTAHS LOFTY LOOP

August 8

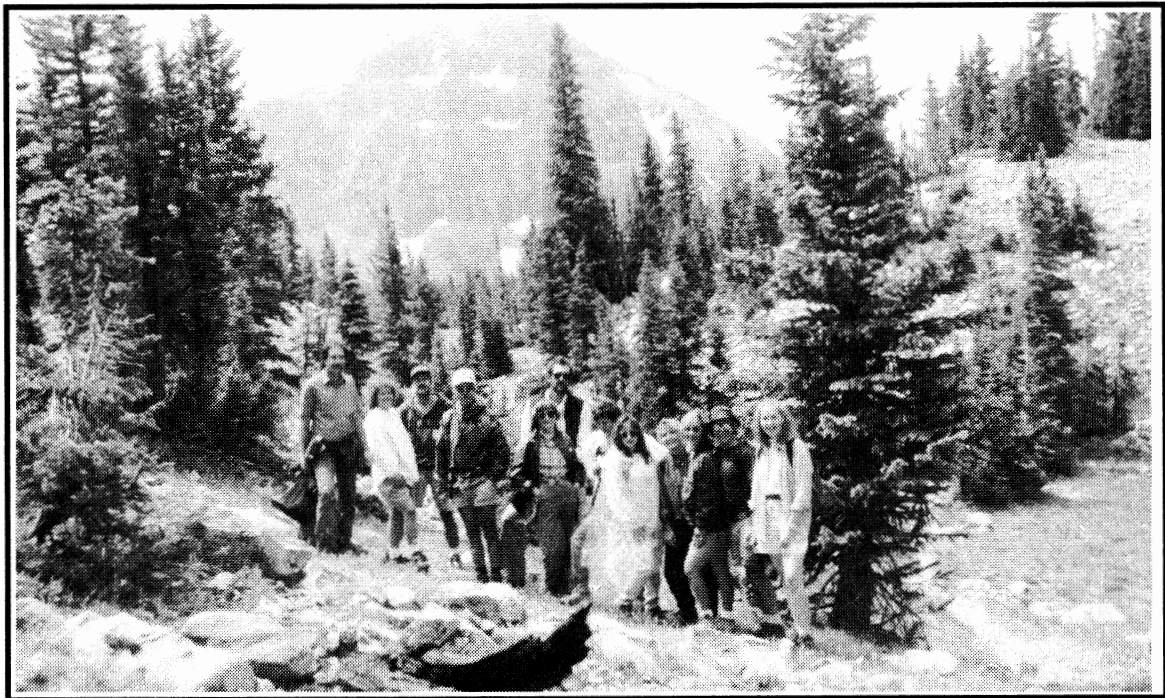
by Cindy Scott

There were 17 Club members who signed up for the Uintahs Lofty Loop hike in the K-Mart parking lot on this sunny Sunday, but about an hour later at the trailhead, the rains poured down and it turned cold. A few people decided a hike in the rain wasn't their idea of a fun time. I think we were each secretly reluctant to go ahead, except Mark who announced he would not be going and would be sitting in the car. I guess he decided to tough it out (probably with the persuasion of his wife, Linda!). Well, Mark took off and disappeared. I think he actually got a little too warm after a while when the weather turned out to make hiking comfortable.

Our first encounter was the large and beautiful Scout Lake. It looked like two lakes that became

connected. We then hiked through a dense mist the higher we climbed. It was like being in an enchanted forest, one where you might expect to see a forest nymph. But then it turned from enchanting to wild when we reached the top. We were still in mist, but it was very windy, cold and hailing. We just met up with all kinds of weather on this hike. It was amazing; one minute we're in a hailstorm; then we'd turn a corner to go down the ridge and suddenly it was a sunny day! I thought, "Wait a minute! This is still the same day! Right?"

We stopped to eat lunch beside Kamas Lake. We stayed for a while here and enjoyed the sunshine and crystal clean mountain air. After the hike, Lyn suggested we all go to Kamas for ice cream so we did!



The adventurous ones were: Mark and Linda Feller, Marilyn Gull, David Dahlkamp, Rose Novale, Nancy Phillips, Brenda and Hank Winawer, George Morris, Lyn Nall, John Hail, Edie and Steve, and yours truly, Cindy Scott, scribe and photographer.

WESTWATER CANYON RIVER TRIP

July 31-August 1 1993

by Siefried and Donna Altinger

The Westwater Canyon river trip had a variety of river craft challenging the swift Colorado river: 2 paddle rafts, 1 oar rig, 1 canoe, and 2 kayaks. Saturday morning this group wasted no time in getting started and jumped to the task of rigging the crafts as the sun and temperatures climbed. Trip leader, Janet Embry put her order in for good weather and kept her success record perfect as the weather for the entire trip remained brilliant.

The river was kind at the start with only small rapids up until lunch. At the lunch stop we had an interesting hike to a small waterfall where we discovered a nice pool. Many of us took time for a dip and dive here. A planning and strategy session followed lunch since from here, the "real" rapids were to start.

The first set of rapids were a lot of fun and helped sharpen the skills we would need for the challenge of the infamous "Skull" with its "Room of Doom". All the craft successfully pulled over before "Skull" to scout it. The kayaks and canoe showed their skills and made it look easy. The first raft made a mistake and ran right into the hole and narrowly escaped the "Room of Doom". Tony Ackerman then guided the oar rig with the same precision as the kayaks and canoe. The second raft also made it look easy. All in all a real success: no flips and everyone stayed on board. The next rapid, "Sock-It-To-Me" was where a sacrifice to the river took

place as one of the scribes, (Donna), took an unexpected swim and lost her hat before a crew rescued her. Twenty minutes later her hat amazingly and unexpectedly resurfaced but disappeared before we could recover it.

A calm stretch of water to the campsite provided all a chance to swim and cool off from the hot temperatures. Boat captain Chris Rowins abandoned ship to try some "kayak walking". This unique skill became really fascinating when Jim Gibson allowed Chris to walk on the bottom of his kayak. Time obviously limited how long Chris walked on the kayak by Jim's ability to hold his breath.

A happy hour with Chuck Denton's cherry bombs and Pat Perry's punch was followed by a Mexican style dinner. A beautiful, clear, warm evening, lit up by a full moon and the echo of Kathy McKay playing a native American flute, made for a natural, peaceful end to a day on the river. A few hours of paddling in the morning and lunch at the river rats haven, Rays Tavern, completed a great river trip for all.

Participants: Greg and Carol Grant, Chuck Denton, Dorthea Eiting, Chris Rowins, Tony Ackerman, Connie Miller, Bob Hannon, Pat Perry, Jim Gibson, Kathy McKay, Jane Wallace, Janet Embry (trip leader), Donna and Ziggy Altinger (scribes).

TWIN LAKES TO DAYS FORK LOOP

August 21

by Vince DeSimone

You know some WMC hikes are going to be fun, exciting adventures because of the person leading the hike. Ellie Ienatsch is one of those people. Every hike I've ever been on that Ellie led has been memorable and this one was no exception.

Fifteen of us left the trailhead under clear cool skies and fresh air washed clean from the rainstorm of the night before. Ozone crispness still permeated the air from the lightning of the storm. We quickly hiked up Twin Lakes Pass, which is only one lake this year since it has stayed so full, and then over to Honeycomb Cliffs.

Knick Knickerbocker and Mark Jones were seen along the trail photographing several huge bull moose grazing at the north end of the lake. They commented this was the third or fourth hike this year they had seen moose and called them "lone males like us".

As we crossed the ridge to the Alta drainage side, Ellie asked if we would like to go along a "secret trail" she knew about that had not yet been discovered by mountain bikers. She made us take an oath to never ride a bike on this trail or tell another soul of its location. Once sworn to secrecy, a conversation on the rights and abuses of mountain bikers and hikers ensued. It seems Ellie has not had a good experience with mountain bikers in the past, saying she had seen mountain bike tracks in the most unlikely places.

This pretty trail followed a long traverse at 10,000' overlooking Alta and Snowbird. We came through a notch to a 100 year old miner's cabin overlooking the cirque at the top of Days Fork. A large steep bowl fell away below us. It was easy to see why this was a favorite for heli-skiers and back country skiers. Ellie pointed to narrow tracks running down the steep hill, informing us mountain bikes' skidding had caused the erosion.

People have frequently stayed at the cabin throughout the year. Looking at the guest register we found comments Ellie had written on numerous occasions over the past ten years. Many references in the register were made to the presence of Oscar, who I assumed to be the ghost of the original miner. Ellie explained that Oscar was really the tame mouse that scurried along the floor, and in truth was probably Oscar #26 or 27.

Having been sworn to secrecy on the other trails, it now became apparent that Ellie had a mothering feeling about these trails too. She had helped to build or discover several unmarked trails with a group of long time Club members who liked to hike off the beaten path.

Following lunch we climbed up along the ridge separating Big and Little Cottonwood Canyons to descend Days Fork along a sparsely used trail. Later we came across skid marks that were attributed to mountain bikes. I concluded they must have been a new type of tire tread made out of Vibram soles!

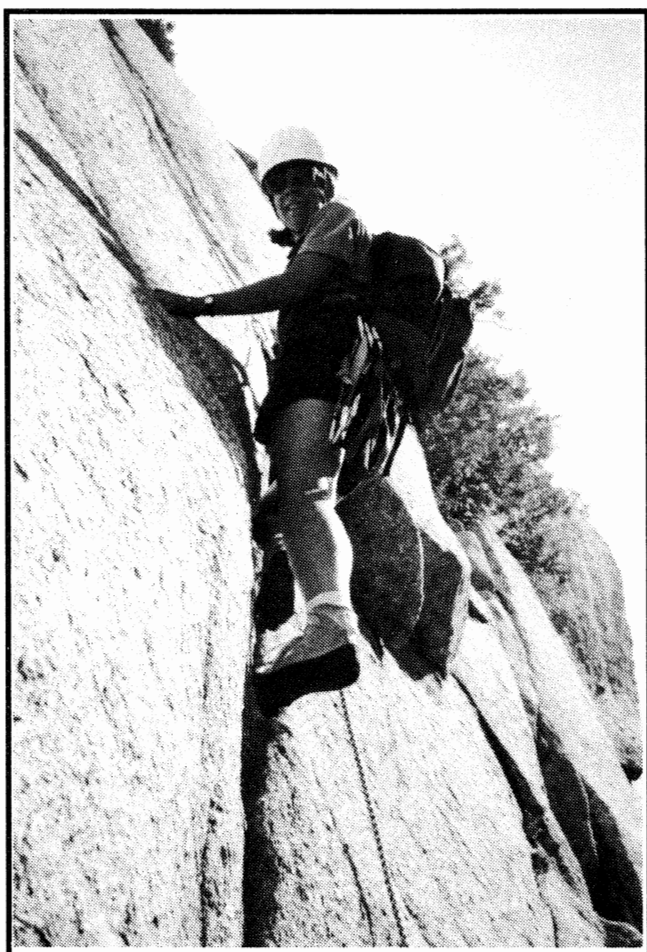
As we got lower into the forested part of Days Fork, Ellie took a few of the group that could be trusted to keep a secret over to a stone arch. Unfortunately, I didn't get to see it. While she was off with them, I took a stick and scratched "Mountain Bike Skid Marks" along the trail below. Some of these "skid marks" even continued under trees that had fallen across the trail resting only a few feet above the ground. When Ellie rejoined the group, we had to conclude the marks were made by a midget mountain biker.

Ellie, thank you for a wonderful hike and the humor, the camaraderie and adventure enjoyed by: Bob Raymer, Dale Rose, Leslie Woods, Bill Franks, Jim Bailey, Knick Knickerbocker, Mark Jones, Shirley Smith, Sue Berg, Judy Elizondo, William Thompson, Alex Ranney, Bill Baranowski and myself.

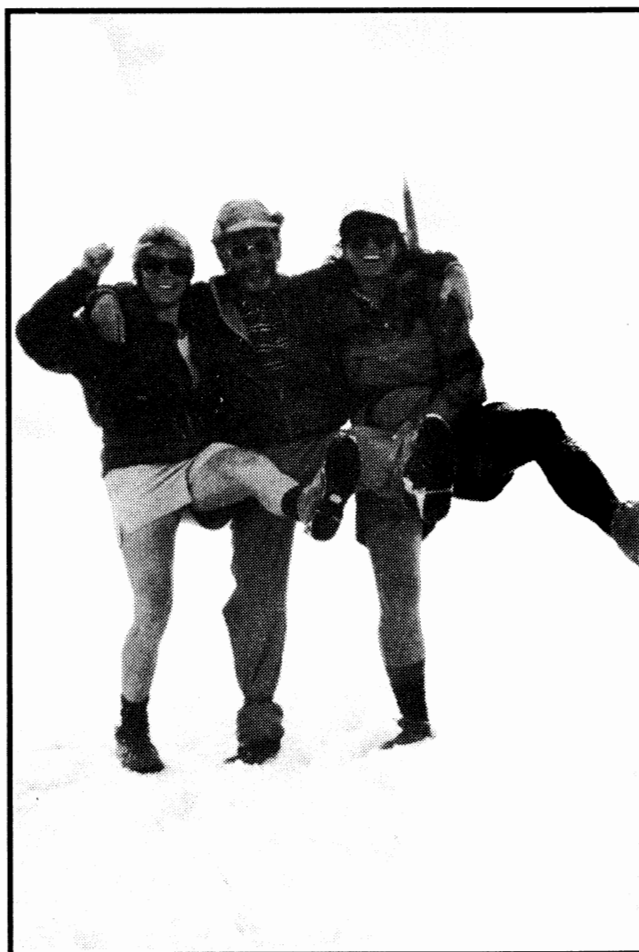
EXTRA PHOTOS



Double Birthday Celebration on summit of Mt. Timp on Aug. 1. Birthday ladies Nancy Allen and Louise Rausch holding treats with Sue Gardner and Phyllis Anderson just behind them. Photo by R. Myers.



Janet ? on Tarzan! Photo by Kyle Williams.



High-steppers Carrie Clark, Bert Balzer, Cheryl Soshnic on Mt. Nebo. Photo by Brad Yates.

NEWCOMER'S HIKE—WHITE FIR PASS

September 12

by Christine Allred

Photo by Cindy Scott of "Lofty Lake"

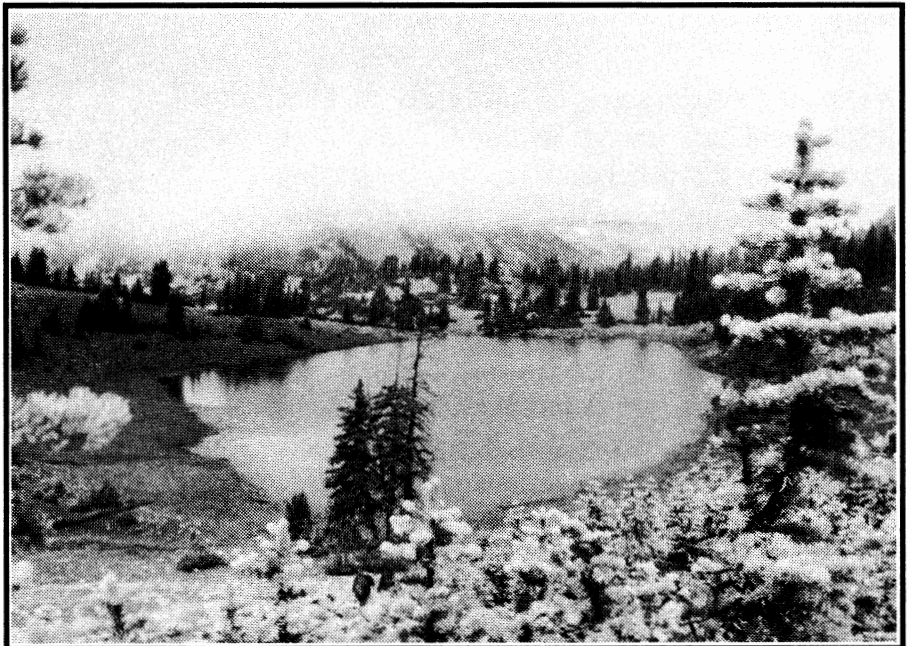
For me, the hours spent in the Utah mountains in September and October have an almost mystical quality: A refreshment of the spirit that is unique from any other time of the year, crisp air which one draws into the lungs in deep breaths, a deeper blue to the sky against which clouds of varied white and gray add contrast, pine trees yielding their harvest to important squirrels and chipmunks, Old Sol blessing you with his warmth.

And the light—oh the light: Rays of sun topping a mountain ridge which had previously been a silhouette, slanting through groves of trees, highlighting the few remaining wildflowers, poking inquisitively into the crevasses and folds of terrain, glinting from recently gilded aspen leaves as the change in temperature heralds summer's wane.

Water: Still gurgling gaily down a hillside, throwing up a bit of spray when it encounters one of the larger rocks in its path. Water: Lying in quiet pools reflecting the abundant growth rimming its shoreline. Water, with its pebbly bottom and long legged skimmers as graceful as any Olympic ice skater. All this and more greeted a group of WMC wannabees and current members on the leisurely walk up Bowman Fork to White Fir Pass.

Linda Kosky, WMC Membership Director, has made a concentrated effort this past summer to lead weekend newcomer-type hikes; she had asked me to spell her this particular Sunday. Karma Arnold and Kileen Hodgkins called to preview our route, ask about gear, and what to bring. Larry Simmons came from Provo to join in on the outing; three established members of the Club were on hand—Ursula Jochmann and Kyle Jones who brought friend Cheryl Nelson Wall and Duane Call with his trademark, two walking sticks and his knowledge of Millcreek flora and fauna. Steven R. Clark, Martin Clemans (who made it after a long work day at the Lodge on Saturday), Randall Brown, Susan Gardner, Ted R. Hemsley, and Scott Dransfield completed the roster.

Frequent stops were made by most of the group along the stream lined path up Bowman fork to sample ripe thimble berries and wild raspberries. After Duane assured us it was safe, we even tried the bright red, valentine heart shaped wild strawberry only to find it mainly consisted of several large seeds. Survival tip of the day, courtesy of Duane: Purple fruit is usually safe to eat (although the one we tried had awesome pucker power), red is questionable so try a teensy bite, wait 30 minutes and if you're not sick, go ahead. White is generally poisonous. Duane also showed us how to



crumple the broad leaf of cow parsnip and rub it against stinging nettle, and I assume other such type of weed rashes, for quick relief.

Better time was made on the switchbacks to the top. Hey, does anyone know what happened to the white fir? While sharing snacks and other largess from our packs, we talked about the various activities available to members of the Club, some common sense rules for hiking in the mountains, the joy of just being out on a fantabulous day!

Back at the trailhead I signed several applications; I think we'll be seeing half a dozen new members—Welcome All. I hope to share another such special event with you soon.

Dear Editor:

Welcome New Members

Having moved here recently from Boston, I want to report on my introduction to the great outdoors through a white water rafting trip put together by the boating division of the WMC. We spent 3 days on the Snake River in the Hell's Canyon recreational area. I had a great and memorable time.

Everyone knew it was my first river trip and were extremely helpful doing everything from pointing out poison ivy and sharing lotions for sunburnt skin to finding someone to loan me a tent at the pre-trip meeting. Most of all, the people were good natured, fun loving, and knew what they were doing.

We went through some serious class 4 rapids which were big enough to throw one oar rig captain into the water and flip another oar rig upside down. In tribute to the competence of the people on the trip, not a single bag or box came loose from the boat which was overturned.

My only regret was when I was making dinner I put too much red pepper into the chili; everyone was nice enough to say that it was still good. Thanks again to all of my fellow river travelers.

David Levy

Bill Shawbetter
Doug Harris

Mark Harman
Mary M. Taylor

Martin Kolker
Carole Crossen
Teresa E. Sudol
Steve and Karin Liimatta
Arthur D. Lipson
Glen B. Wells
Jack Hansen
Charlie Sherman
Lori Ball
Konrad Behrens
Martin W. Clemans
Janisse Cline
Kathleen Dougherty
Lynne D. Finney
Terri Fitzsimmons
Robert W. Graves
Carl C. Bosland

Karen-Ann ("Sam") Kievit
Jane R. Levy
Alan Lindsay
Craig A. McCarthy
Cindi McGarvin
Rob Merritt
George Morris
Ronald J. Muffler
Gary Eugene Myers
Marshall Welch
Judy K. Morf
Michael S. Corris
Jayel and Ray Madsen
John Crocker
Susan Velez
Helen Louie

Reinstatements (Welcome Back)

Judy Frojen
Wes Groesbeck
Darlene Jacobsen
Lois Anne Shipway

Lauraine Stephen
Cristel Sysak
Lee and Judy Taylor
Bill Walton
R.J. Stearman, M.D.

*Unknown mountain gazer near pass on Mt. Timp.
Photo by B. Myers*





WASATCH FRONT FORUM

A Tale of Three Councils: When Does Citizen Action Stop Development?

Tuesday, October 12, 1993
First Unitarian Church (569 S. 1300 E.)
7:00 p.m. panel discussion
Social hour follows program

Recent housing developments in the bench areas of the Wasatch Front have alarmed citizens valley-wide. There have been some notable successes and failures in curtailing developments in sensitive areas. Community activists from the Grandeur Peak Neighborhood Association, the Cottonwood Heights Community Council and the Greater Avenues Community Council will relate their citizen action experiences. Another panelist will give us the Salt Lake County Planning Commission's perspective.

This is the first of the 1993-94 series of meetings sponsored by the Wasatch Front Forum, an organization created to provide a forum for Utahns to learn more about the natural history of the Wasatch Front and the legal, political and social issues facing public land managers and local governments. Meetings are scheduled for the second Tuesday of each month (except during the summer). WFF is not intended to provide public hearings on projects, but rather to involve interested people; it will enable you to find out more about what is going on in our nearby mountains and to ask questions about new proposals. WFF is supported by the Utah Chapter of the Sierra Club, the Wasatch Mountain Club, Great Salt Lake Audubon, The Utah Nordic Alliance, the Utah Mountain Bike Association, the Utah Wilderness Association, and the Citizens' Committee to Save Our Canyons. Watch for notices of future meetings.

If you have any questions or are interested in helping the Wasatch Front Forum, or if you want to be on the mailing list, please call Tom Berggren or Ann Wechsler at 363-9621 (Sierra Club) or write c/o P.O. Box 58671, Salt Lake City, Utah 84158-0671

Classified Ad Policy

LODGE WORK PARTIES

Oct. 9 and 23 from 9:00 am to dusk

Stay all or part of the day, lunch and soft drinks provided.

Work day participants have free admission to any Club activity that evening.

Details: Rich Osborne 647-0205

Bob Myers 485-9209

Come Join in the Fun

As a reminder, here are directions to some of the Club's favorite meeting places for hikes.

Olympus Hills Mall northeast lot: roughly 3550 East 3900 South; go east from the corner of 3900 South and Wasatch Boulevard and turn right into the parking lot on the east side (rear) of the mall.

Big Cottonwood lot: on the northeast corner of Wasatch Boulevard and the Big Cottonwood road at the mouth of the canyon (enter from the Big Cottonwood road).

Utah Travel Council lot: roughly 125 East 300 North; go north on State Street to the Capitol, turn right (east) and enter the lot on your right.

Parleys K-Mart lot: roughly 2800 East 2400 South; between Parleys Way and Foothill Drive near their common I-80 interchange.

Skyline High School east lot: roughly 3350 East 3760 South; from Wasatch Boulevard, go under I-215 on 3800 South and turn right at the big entrance gate.

The *Rambler* cannot accept any ad that is inconsistent with the purposes of the WMC or offends the sensibilities of Club members. Send your ad (with a check enclosed if it is not used sports equipment) before the 13th of the month to Sue deVall, 11730 South 700 West, Draper UT 84020 or call Sue at 572-3294 for information.

Members may place classified ads for used sports equipment free of charge. Other classified ads require a \$5.00 donation to the WMC for up to 20 words with \$.20 per word over 20. Words of 2 letters or less will not count as a word.

Raicle Hiking Boots: Men's size 11, leather, good condition, cost \$200, will sell for \$50.

Petzl Climbing Helmet: Size large, like new, \$25 less than 1/2 the purchase price.

SMCHinged Crampons with neoprene straps, adjustable to fit, men's size 10 hiking boots as well as smaller and larger sizes, good condition, \$35, only 1/3 purchase price. Call David (772-1421) about any of these three items.

Downhill Skis Kastle RX 180 CM w/Solomon S727 binding, Nordica Boots w/buckles (M 5 1/2; F 7 1/2) and poles, used, \$50.

Voile Snake Skins: Short—up to 200 CM, used twice, \$25.

Ski Poles Dynastar: New, 120 CM/48", \$8.

Bike Carrier for Trunk or Hatchback: Royce/Black, used once, \$10.

Bike Trainer: Minoura/Masturb, Variable Resistance, \$80. Call Liliane (561-3756) for any of these five items.

Jackson Hole Mountain Guide Steve Walker will be leading a guided trip to Aconcagua in January 1994. For information contact JHMG at (307-733-4979) or Steve at (466-7032).

FOUND: Near Wasatch Mountain Club Lodge - 10 carat gold ring (mens), contact Mary Ann (278-4587).

SKY CALENDAR

MOON

Last Quarter	Oct 08	Nov 06	Dec 06
New Moon	Oct 15	Nov 13	Dec 13
First Quarter	Oct 22	Nov 20	Dec 20
Full Moon	Oct 30	Nov 28	Dec 28

MOONRISE

Saturday	Mtn. Daylight Time
Oct 02	7:45 pm
Oct 09	midnight
Oct 16	9:00 am
Oct 23	3:00 pm
Oct 30	5:30 pm

	Mtn. Standard Time
Nov 06	11:30 pm
Nov 13	6:30 am
Nov 20	12:30 pm
Nov 27	4:00 pm
Dec 04	10:30 pm

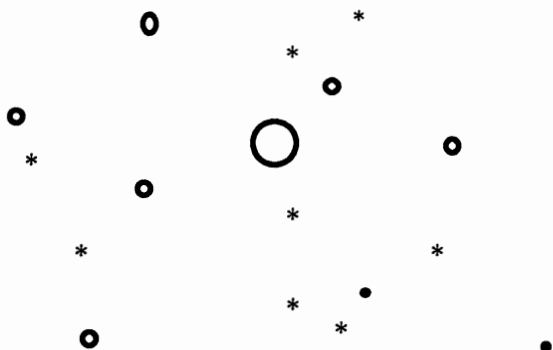
NOTE: Moonrise times are for 40 degrees north latitude, 112 degrees west longitude. Add about an hour for each day later than the given date, and another hour if you are in the mountains.

SOURCE: The Astronomical Almanac for 1993

MOON: October and November have weekend full moons again, for moonlight hikes, and weekend new moons, for watching starry skies in the Swell.

PLANETS: Yellowish SATURN is high in the south at dusk. Bright VENUS precedes the sun in the morning sky.

STARS: ARCTURUS, most beautiful of stars, is fading to the west at dusk, while the Pleiades are rising in the east.



WASATCH MOUNTAIN CLUB

Membership applicants must participate in at least two Club outdoor or service activities, verified by the signatures of approval from the activity leaders. Yearly dues are \$25.00 single, \$35.00 couple. A \$5.00 initiation/reinstatement fee is charged.

1992-93 GOVERNING BOARD

President	Jerry Hatch	467-7186
Secretary	Nance Allen	486-0546
Treasurer	Tom Silberstorff	255-2784
Membership	Linda Kosky	943-1871
Boating	Randy Klein	944-9070
Conservation	John Veranth	278-5826
Entertainment	Mary Ann Losee	278-4587
	Randi Gardner	968-7335
Hiking	Donn Seeley	595-1747
Lodge	Rich Osborne	647-0205
	Bob Myers	485-9209
Lodge User Rep	Rich Osborne	647-0205
Mountaineering	Kyle Williams	576-1579
Publications	Jean Frances	582-0803
	Christine Allred	261-8183
Ski Touring	Norm Fish	964-6155
	Clint Lewis	295-8645
Bicycling	Kathy Hoenig	486-8525
Information (PR)	Michael Treshow	582-0803

COORDINATORS

Canoeing	Jim Brown	359-0754
Trails Issues	Chris Biltoft	364-5729
Kayaking	Janis Huber	486-2345
	Joergen Pilz	539-6685
Sailing	Vince Desimone	1-649-6805
Rafting	Janet Embry	322-4326
Boating Equipment	Tony Ackerman	966-6041
	Gene Jarvis	944-8619
Boating Instruction	Neal Reiland	272-6318
Volleyball	Russ Martin	566-6525
Adopt-A-Highway	Linda/Mark Feller	562-5428
Commercial Ads	Knick Knickerbocker	364-6521

TRUSTEES

Dale Green	277-6417	Term Exp 94
Alexis Kelner	359-5387	Term Exp 95
Mike Budig	328-4512	Term Exp 96
Karin Caldwell	942-6065	Term Exp 97
O'dell Peterson	355-7216	Emeritus

OFFICE HOURS

Carol Rauba 363-7150
Generally 9 am-2 pm Tuesdays and Thursdays

PLEASE COMPLETE BOTH SIDES

WASATCH MOUNTAIN CLUB

APPLICATION FOR NEW MEMBERS/REINSTATEMENT FOR PREVIOUS MEMBERS

RAMBLER SUBSCRIPTION FORM

DO NOT USE THIS FORM TO RENEW YOUR MEMBERSHIP

Please read carefully and fill out completely.

APPLICANT(S) NAME(S) _____

ADDRESS _____ CITY _____ ST _____ ZIP _____

HOME PHONE _____ DAY PHONE _____ BIRTH DATE _____

I HEREBY APPLY FOR:

____ NEW MEMBERSHIP ____ STUDENT (30 years or younger)

____ REINSTATEMENT ____ COUPLE

I wish to receive the RAMBLER (The WMC Publication) YES ____ NO ____

Subscription price is NOT deductible from the dues.

Enclosed is \$ _____ for one year's dues and application fee (Mar 1, 19__ to Feb 28, 19__).

**** (CHECKS ONLY) Make checks payable to Wasatch Mountain Club****

Remit: \$20.00 for student membership (\$15.00 dues and \$5.00 application fee)

\$30.00 for single membership (\$25.00 dues and \$5.00 application fee)

\$40.00 for couple membership (\$35.00 dues and \$5.00 application fee)

YOU MUST COMPLETE TWO CLUB ACTIVITIES FOR MEMBERSHIP CONSIDERATION
THE ACTIVITY DATES MUST HAVE BEEN WITHIN ONE YEAR OF THE APPLICATION

QUALIFYING ACTIVITY	DATE	SIGNATURE OF RECOMMENDING LEADER
---------------------	------	----------------------------------

1. _____	_____	_____
----------	-------	-------

2. _____	_____	_____
----------	-------	-------

I agree to abide by all the rules and regulations of the WMC. I am 18 years of age or older. I understand that outdoor activities involve risk, and that I am responsible for determining the suitability of my ability and equipment in advance of participating in any WMC activity. I release and discharge the WMC agents and representatives from all claims for property and personal injury sustained as a result of participation in WMC activities.

APPLICANT'S SIGNATURE _____
(signature required)

I found out about the WMC from _____

MAIL APPLICATION AND CHECK TO: MEMBERSHIP DIRECTOR
Wasatch Mountain Club
888 South 200 East Suite 207
Salt Lake City, UT 84111-4220

LEAVE BLANK

RECEIPT # _____ DATE RECEIVED _____ AMOUNT RECEIVED _____

(OR CHECK#) _____

BOARD APPROVAL DATE _____

ACTIVITY SURVEY

WOULD YOU LIKE TO LEAD...?

All of the Club's activity leaders are volunteers. You can be a leader too — just check off the activities you want to lead, and we'll give you a call. Help your Club and have fun too!

Hiking: ☐ easy day hike, ☐ moderate day hike, ☐ advanced day hike, ☐ car camp,
☐ backpack

Boating: ☐ trip leader, ☐ instruction, ☐ equipment, ☐ sailing

Skiing: ☐ NTD tour, ☐ MOD tour, ☐ MSD tour, ☐ out of town trip

Climbing: ☐ Wasatch climb, ☐ out of town trip, ☐ winter mountaineering

Bicycling: ☐ road bike tour, ☐ mountain bike tour, ☐ camping tour

Other outings: ☐ snowshoe tour, ☐ caving, ☐ scuba diving, ☐ other _____

WOULD YOU LIKE TO SUPPORT...?

The Club also depends on volunteers for all the rest of its work. Some of this work is critical to the day-to-day functioning of the Club; some of it is important to our community; some of it is just fun. You can let us know how you'll help by checking off activities below.

Conservation: ☐ air and water quality issues, ☐ trailhead access, ☐ wilderness, ☐ telephone tree, ☐ trail clearing

Socials: ☐ social host, ☐ party assistance, ☐ lodge host

Rambler: ☐ computer support, ☐ word processing, ☐ mailing, ☐ advertising

Lodge: ☐ general lodge repair, ☐ skilled lodge work

Information: ☐ public relations, ☐ membership help, ☐ recruiting, ☐ instruction

Would you like to participate on an activities committee? Which one?

Is there a special trip or activity you would like to lead?

What phone numbers can we use to reach you?

WASATCH MOUNTAIN CLUB
888 SOUTH 200 EAST, Suite 207
SALT LAKE CITY, UT 84111-4220

Suite 207

SECOND CLASS
POSTAGE PAID
SALT LAKE CITY, UT