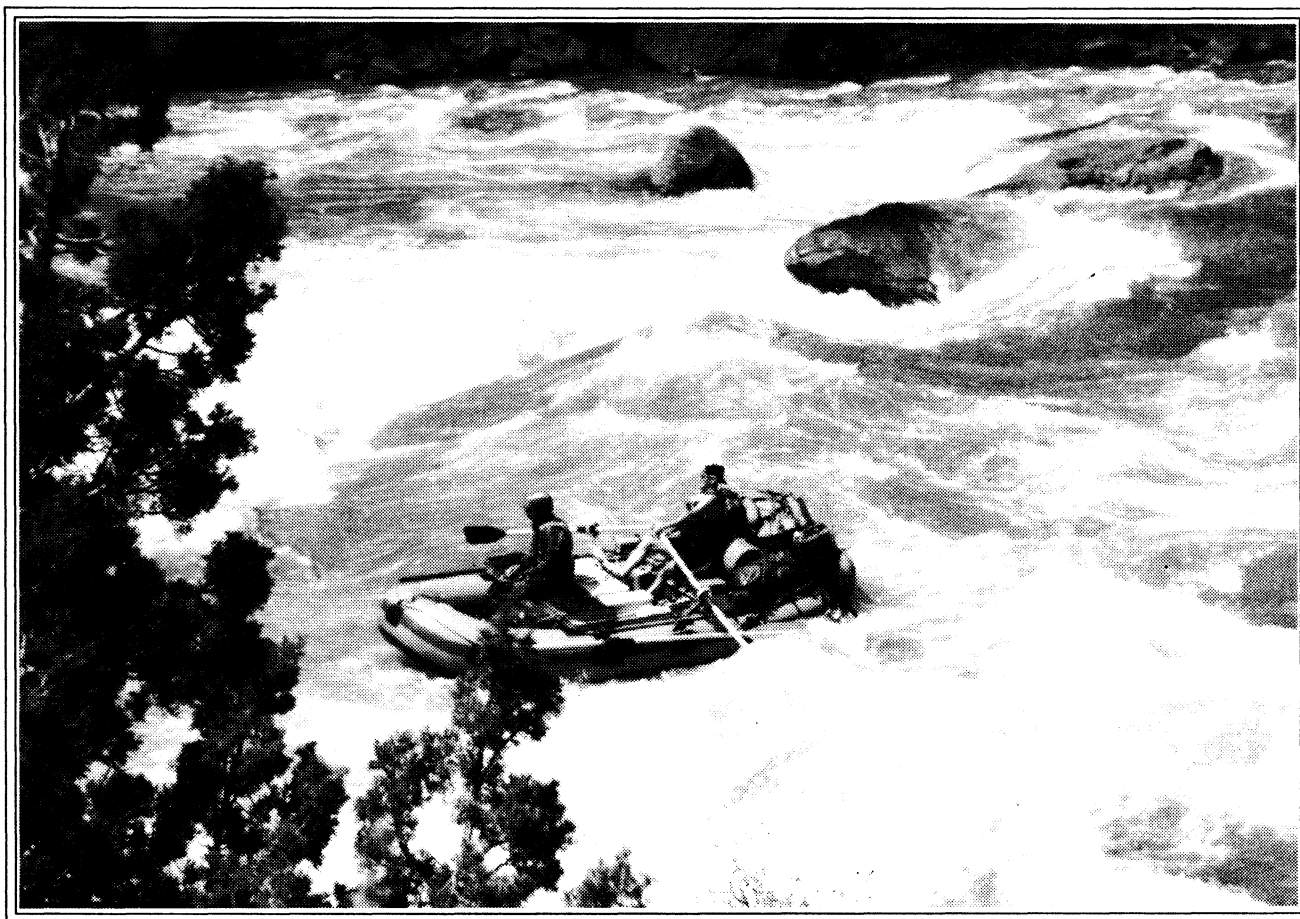


The Rambler

**Wasatch Mountain Club
DECEMBER 1994**



**VOLUME 77, NUMBER 12
Printed on 100% Recycled Paper**

Managing Editors
Jean Frances—Jim Zinanti

ADVERTISING	Reda Herriott
CLASSIFIED ADS	Sue deVall
COVER LOGO	Knick Knickerbocker
MAILING	Christine Allred
PRODUCTION	Jean Frances/Jim Zinanti

The Rambler (USPS 053-410) is published monthly by the WASATCH MOUNTAIN CLUB, Inc., 888 South 200 East, Suite 207, Salt Lake City, UT 84111-4220. Telephone 363-7150. Subscription rates of \$12.00 per year are paid for by membership dues only. Second-class postage paid at Salt Lake City, UT.

POSTMASTER: Send address changes to The Rambler, Membership Director, 888 South 200 East, Suite 207, Salt Lake City, UT 84111-4220. CHANGE OF ADDRESS: This publication is not forwarded by the Post Office.

The right is reserved to edit all contributions and advertisements and to reject those that may harm the sensibilities of WMC members or defame the WMC.

Copyright 1994, Wasatch Mountain Club.

Office hours: Mondays and Wednesdays
9:00 a.m. to 2:00 p.m.

Office phone: 363-7150

Address: 888 S. 200 E., Suite 207
Salt Lake City, UT 84111-4220

Office assistant: Jean Frances

PROSPECTIVE MEMBER INFORMATION

Applicants must attend two official WMC activities other than socials. Activities are listed in THE RAMBLER, the official publication of the Wasatch Mountain Club, published monthly by and for its members. Prospective members may receive THE RAMBLER for two months by writing the Membership Director at the above address and enclosing a check or money order for \$3.00 payable to the Wasatch Mountain Club. There is a \$10 charge for returned checks. An application is at the back of THE RAMBLER. Ask the leader of the activities to sign your form after completing the trip.

MEMBERS: If you have moved, please call the WMC office or send your new address to the Membership Director. Allow 45 days for address changes. If you did not receive your RAMBLER, contact the Membership Director to make sure your address is in the Club computer correctly.

TO SUBMIT AN ARTICLE: Articles must be typed double spaced or on a floppy disk with a hard copy, also double spaced, and received by 6:00 pm on the 15th of the month preceding publication. Drop articles off at the WMC office (Mon-Fri—8 am to 5:30 pm), in the Blue Box outside Suite 207, or mail it to WMC Rambler Editor, (office address in left hand column). Pick up disks/photos outside the WMC Office in the Red Box. Include your name and phone number on all submissions.

TO SUBMIT A PHOTO: We welcome photos of all kinds: black & white prints, color prints, and slides. Please include captions describing when and where the photo was taken, the names of the people in it, and the photographer. Photos will not be returned unless requested and accompanied by a self-addressed stamped envelope, otherwise they will be found in the Red Box outside the office door of the WMC.

WMC Purpose

(Article II of the WMC Constitution)

The purpose shall be to promote the physical and spiritual well being of its members and others by outdoor activities: to unite the energy, interests and knowledge of students, explorers and lovers of the mountains, deserts and rivers of Utah; to collect and disseminate information regarding the Rocky Mountains in behalf of science, literature and art; to explore and picture the scenic wonders of this and surrounding states; and to foster awareness of our natural areas including their plants, animal and bird life.

Cover Photo

Boating on The Gates of Lodore.
Photo by Phyllis Anderson.

Cross Country Skis made **SHORTER** so your fun lasts **LONGER!**

Here's How:

In a nutshell...shorter cross country skis are just plain fun! They're very stable, more maneuverable, and easier to control than traditional lengths. And, you'll still zip along with ease because shorter skis still have remarkable glide and performance...very exciting technology in a sport that has remained virtually unchanged for decades!

SHORTER SKIS give you a wonderful feeling of personal freedom...with plenty of time for relaxing and enjoying the beautiful winter outdoors.

Kirkham's has 10 brand new short cross country models designed for all types of skiing including light touring, backcountry, or skating. From 160.00 to 209.00*

*Less if purchased in complete package.



Less Length = More Fun!



Kirkham's
outdoor products



3125 South State Street (801) 486-4161 Open Monday - Friday 9:30 to 9:00 Saturday to 7:00

TWENTY-FIVE YEARS AGO IN THE RAMBLER

NOVEMBER 1969

BY DALE GREEN, HISTORIAN

"One rancher in the Escalante-Boulder area has threatened to break into Sierra Club and Wasatch Mountain Club cars parked at the heads of canyons in the area. You are advised not to have anything in your car that identifies you as a hiker or conservationist. In fact, if you have an old bale of hay, or an old saddle around your house you would be wise to leave them in your car." (From Conservation Notes by June Viavant.)

In another conservation matter, WMCers and the Forest Service managed to divert a planned National Guard Special Forces Group camp away from Lone Peak Cirque. They had originally scheduled 400 men to camp there for 4 days of intensive training in mountain climbing and snow survival.

The Bell Canyon Irrigation Company posted notices all over the entrance to the canyon that they owned all access and that no camping, riding horses, swimming or hiking would be allowed. The water was a culinary watershed serving over 1000 persons. Hiking by persons over 16 years of age was allowed only by permit.

WMC "Mountaineer" patches were being "bestowed upon those members who possess the necessary combination of mountaineering judgment, skills, and ability." The purpose was to ensure that there will always be an adequate supply of competent people to improve and perpetuate the mountaineering program of the WMC.

FIFTY YEARS AGO IN THE WMC

AUGUST, 1944

(From Board of Directors' minutes)

Approval was given to repair the Juke Box and radio at the lodge. The other pressing lodge business was installing new linoleum on the kitchen drain boards.

Trips scheduled for August and September were a Beach Party, Lake Blanche hike, Lodge Labor Day, and Wood Cutting.

ANSWER TO LAST MONTH'S TRIVIA QUIZ: "Is the highest range in Utah called the "Uinta" or Uintah" Mountains? Why is there a different spelling?

Originally "Uintah" was used for all purposes. Then around the turn of the century a few prominent geographers and geologists started using "Uinta", dropping the "h", saying it was unnecessary for pronunciation. However, several political boundaries had already been established using "Uintah". As a compromise, The Board on Geographic Names has issued a strict rule: Geographic names use "Uinta"; Political boundaries use "Uintah." Thus we have the Uinta Mountains (geographic) in Uintah County (politically established). Exceptions (made before the rule) include Uinta County in Wyoming and the Uinta Nat'l Forest, both political boundaries. Don't try to convince anyone living in the Uinta Basin (Vernal, Roosevelt, etc.) of this rule. To them, it is all Uintah.

TRIVIA QUIZ

What are the official names of the valleys in which Salt Lake City and Ogden City are located?

EVENTS AT A GLANCE

SKI AND SNOWSHOE TOURS

December

- 3 Ski Tour-Scotts Pass
- 3 Ski Tour-Uintas: Upper Setting Road
- 3 Snowshoe-Dog Lake
- 4 Snowshoe-Leader's Choice
- 4 Ski Tour-Uintas: Beaver Creek
- 4 Ski Tour-Leader's Choice
- 10 Ski Tour-Days Fork
- 10 Ski Tour-Leader's Choice
- 10 Ski Tour-Superior/Monte Cristo from Alta
- 10 Snowshoe-Leader's Choice
- 11 Snowshoe-Leader's Choice
- 11 Ski Tour-Lower Silver Fork
- 11 Ski Tour-U.S.A. Bowl
- 17 Ski Tour-Mill Creek Doggie Tour
- 17 Ski Tour-Reynolds Peak
- 17 Ski Tour-Catherines Pass from Brighton
- 17 Ski Tour Full Moon Pk Cty/White Elephant Party
- 17 Snowshoe-Desolation Lake
- 18 Ski Tour-Two Leader's Choice Tours
- 18 Ski Clinic:-Telemark Lessons at Alta
- 18 Snowshoe-White Fir Pass
- 19 Ski Tour-Scotts Pass
- 24 Ski Tour-Upper Greens Basin
- 24 Snowshoe-Bountiful Foothills
- 24 Ski Tour-Leader's Choice
- 25 Ski Tour-Albion Basin
- 28 Ski Tour-Leader's Choice
- 31 Ski Tour-Beaver Creek/New Years Resolutions
- 31 Snowshoe-Mineral Fork Lower Meadow
- 31 Snowshoe-Mount Aire

January

- 1 Ski Tour-Avalanche Awareness
- 1 Ski Tour-Crack of Noon
- 7 Ski Tour-Norway Flats
- 7 Ski Tour-Powder Park
- 7 Ski Tour-Pfeifferhorn
- 7 Snowshoe-Reynolds Peak Exploratory Loop
- 7 Snowshoe-Silver Fork
- 7-8 Ski/Snowshoe Tour to TUNA Yurt
- 8 Snowshoe-Alta Area
- 8 Ski Clinic-Uintas for Audrey Kelly Memorial
- 8 Ski Tour-Scotts Pass
- 8 Ski Tour -Two Leader's Choice Tours
- 14 Ski Tour-Lower Silver Fork
- 14 Ski Tour-Powder Park
- 14 Ski Tour-Leader's Choice
- 14 Snowshoe-Greens Basin
- 14 Snowshoe-Dog Lake
- 15 Snowshoe-Dog Lake
- 15 Snowshoe-Red Pine
- 15 Ski Tour-Uintas Upper Setting Rd.
- 15 Ski Tour-Leader's Choice

SKI AND SNOWSHOE TOURS

January

- 15 Ski Tour-Brighton Twin Lakes Pass-Silver Fork
- 16 Ski Tour-Martin Luther King Tour
- 19 Avalanche Class Part I
- 21-23 Ski Yurt Trip Logan Canyon
- 22 Avalanche Class Part II

SOCIALS

December

- 1 After Work Social
- 4 Holiday Wrap & Cookie Exchange
- 7 Movie Night
- 9 Sing-a-Long
- 16 Ice Skating
- 19 Christmas Caroling
- 21 Movie Night
- 31 First Night Celebration

January

- 4 Movie Night
- 6 Outdoor Ice Skating
- 8 Tailgating and Tubing
- 8 Planning Meeting
- 11 Indoor Rollerblading
- 14 Country/Western Line Dancing
- 18 Movie Night
- 21 Awards Banquet and Dance

SPECIAL EVENTS

December

- 4 Snow Shoveling at the Lodge
- 7 Board Meeting
- 18 Snow Shoveling at the Lodge

January

- 4 Board Meeting

CLIMBING

December

- 7/14/21/28 Wasatch Front Climbing Gym
- 10 Mountaineering Season Social

January

- 4/11/18/25 Wasatch Front Climbing Gym
- 7 Ice Climbing
- 14 Ice Climbing
- 21 Ice Climbing—Advanced

Fall -Winter VOLLEYBALL Participation Limited to 42

DATES:	Mon. Not submitted—call Ross
PLACE:	Highland High—2100 S. 1700 E.
TIME:	6:30 pm in Girl's gym
FEE:	\$1.00 members \$2.00 non
CALL:	Ross Martin 364-4006

REI CLINICS

3285 E. 3300 S.

Ctcs: Marty Stum or Kelly Davis
(486-2100)

All clinics start at 7:00 on Tuesday evenings

Dec. 6 Devry Garity shares her slides and adventures from 3 months of canoeing the north country, including crossing the Arctic Ocean.

Dec. 13 Snow experts from UT Avalanche Forecast Ctr present a slide show and video, shares safety tips for skiers, snowboarders, etc. This is the last clinic for the season.

Dec. 20 Dan Smith presents slide show on climbing in Asia. His expedition starts in Russia's Tien Shan Mts., then into China, following the Karakoram hwy to the Kunlun Range and Mustag Ata (24,757'), Father of All Ice Mts.

Sky Calendar

MOON

New Moon	Dec 02	Jan 01	Jan 30
First Quarter	Dec 09	Jan 08	Feb 07
Full Moon	Dec 17	Jan 16	Feb 15
Last Quarter	Dec 25	Jan 23	Feb 22

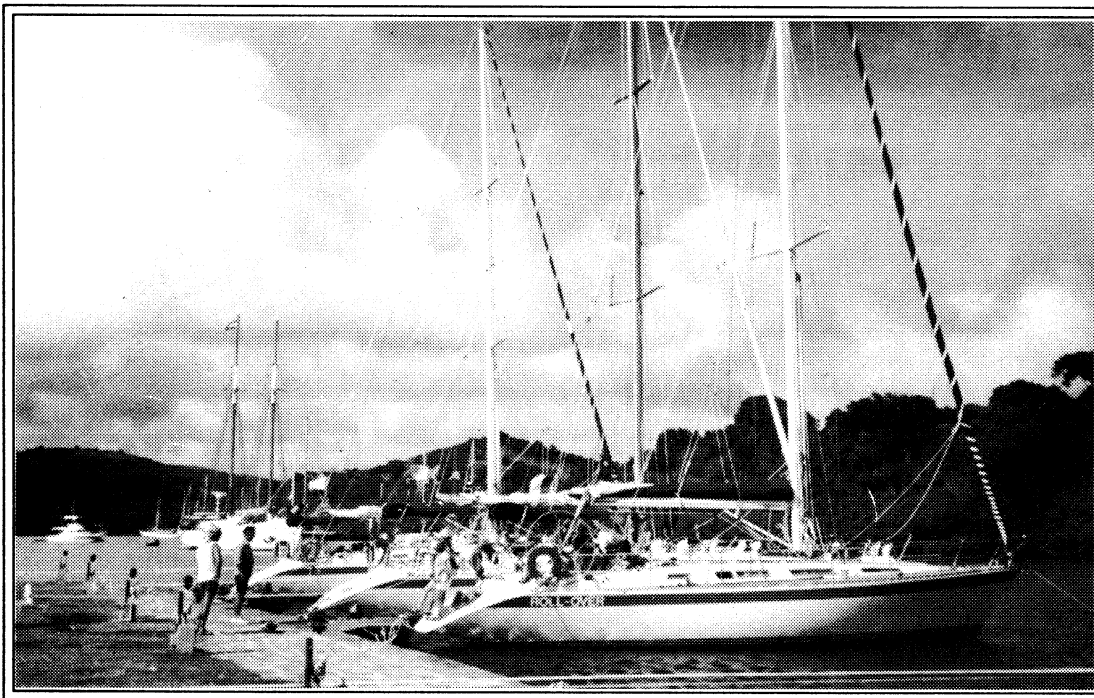
MOONRISE

40 N. latitude, 112 W. longitude, flat horizon

Saturday	UT	MTN
	Standard Time	
Dec 03	7:22	8:00 am
Dec 10	12:16	12:40 pm
Dec 17	4:27	5:00 pm
Dec 24	11:17	11:45 pm
Dec 31	6:03	6:30 am
Jan 07	10:46	11:15 am

SOURCE: The Astronomical Almanac for 1994 and 1995.

We have full moons for moonlight skiing on the weekends of December 17 and January 14. **Venus** is back in the morning, it will be just north of the crescent moon on the morning of December 29. **Mars** rises late in the evening in the constellation Leo and will be just north of the bright star Regulus on December 8. The yellow planet high in the south in the evening is **Saturn**.



The Nina, Pinta, and Santa Maria Aramada in their modern regala, also known as Valvia, Nil Victoria, and Roll Over, sailed the Caribbean again—Oct. 23-Nov 6—led by Vince Desimone. Photo by Frank Bernard.

PUBLIC SERVICE ANNOUNCEMENTS

WMC LODGE AVAILABLE FOR FALL AND WINTER BOOKINGS

Plan now to hold your family reunion, office party, workshop, wedding, or other special occasion at the WMC LODGE. Now accepting reservations for spring and summer use. User rates are as follows:

24 hour rate, noon to noon: \$225

Half-day rate, Mon-Thurs: \$150
(8am-5pm or 6pm-midnite)

We often have to turn away people because they didn't reserve early enough, so make those plans now!
Call Rich Osborne (1-801-647-0205) for more information.



SNOWSHOE RENTAL RATES

STORE NAME	PHONE	ADDRESS	SNOWSHOE BRAND	RATE 1st DAY / 2nd DAY
Kirkham's	486-4161	3125 South State St	Tubbs	\$7 / \$5
REI	486-2100	3285 East 3300 South	Tubbs	\$8* / \$6*
Rock & Road Cycles	278-4921	6185 S. Highland Dr.	Atlas	\$8 / \$*
Sidsports	486-9424	3025 East 3300 South	Yuba	\$10
Sports Den	582-5611	1350 S. Foothill Dr.	Plastic Type & Tubbs	\$5
Wasatch Touring	359-9361	702 East 100 South	Redfeather & Tubbs	\$6
Wild Rose	533-8671	702 3rd Avenue	Redfeather & Tubbs	\$8
Jans Mtn. Outfitters	1-649-4949	Park City	Redfeather	\$15*
White Pine Touring	1-649-8710	Park City	Atlas	\$8

* REI members rate, non-REI member rate \$2 more. **NOTE: Above is just to give beginners a place to start.**

* Rent for Saturday get Sunday free.

Half-day rate is \$9

Other stores rent snowshoes too. Knick also recommends using poles for balance.

CLUB ACTIVITIES

Only activities approved by the appropriate WMC Director can be listed in the Club Activities section of the *Rambler*. Send your proposed activity for approval to the hiking, boating, skiing, etc., director for inclusion in their activity schedule. Those activities sent directly to the *Rambler*, without approval, will not be published.

Participation in any WMC activity can be dangerous. It is your responsibility to evaluate your own preparedness and ability to safely participate in any activity.

Dec 1 Thu

AFTER WORK SOCIAL: Join Phyllis Anderson for some friendly conversation and making plans for the weekend. Time: 5:30, call Phyllis (943-8500) for details.

Dec 3 Sat

SKI TOUR: SCOTTS PASS (NTD) If you haven't been touring yet, get going!!! Mohamed Abdallah (466-9016) will lead this pleasant trip. Meet him at 8:30 am at the Foothill K-Mart, and bring your skins.

Dec 3 Sat

SKI TOUR-UINTAS: UPPER SETTING ROAD (MOD) Call Carolyn Clark (583-1205) before Friday for information, time and place. It will be a 12 mile round trip with 2300' elevation gain. Bring your skins.

Dec 3 Sat

SNOWSHOE: DOG LAKE (NTD) Holly Smith (272-5358) will lead a group of beginner snowshoers on a snowshoe tour in Big Cottonwood. Meet Holly at Butler Elementary School (2700 E. 7000 S.) at 9:30 am.

Dec 4 Sun

SKI TOUR- UINTAS: BEAVER CREEK (NTD) Meet Nance Allen (273-8010) at 10 am at the Parley's Way K-Mart. Touring skis are fine on this forest service groomed ski trail. The Beaver Creek trail is north facing, so it retains good snow in early winter.

Dec 4 Sun

SKI TOUR: LEADER'S CHOICE (MOD) Meet Jeff Barrell (278-3510) at 9 am in Lot #4, as Jeff will surely find the best snow in the Wasatch. Bring beacon, skins and shovel.

Dec 4 Sun

SNOWSHOE: LEADER'S CHOICE (NTD) Knick Knickerbocker (565-0910) will lead a group of beginner snowshoers on a snowshoe tour in Big Cottonwood. Meet Knick at Butler Elementary School (2700 E. 7000 S.) at 9:30 am.

Dec 4 Sun

LODGE SNOW SHOVELING PARTY: Shovels and snow provided! Come and join the fun from 2-4 pm! Put it on your calendar! Call Rich Osborne (1-647-0205) for more details.

Dec 4 Sun

HOLIDAY GIFT WRAPPING/COOKIE EXCHANGE: Celebrate the spirit of the season with a gift wrapping party for homeless kids and elderly shut-ins. Bring an unwrapped gift and 3-4 dozen cookies for exchange. Cost: \$2 with gift and cookies or \$5 without them. Time: 6-9 pm at the Polo Club Clubhouse. Directions: 3360 S. Highland Ave. Enter from Highland at the Polo Club Sign, immediately turn right after China City sign as you head south. Contact Liz (484-3740) for details.

Dec 7 Wed

BOARD MEETING: Attend the WMC Board Meeting at 7:30 pm at the Club office, 888 S 200 E. A pre-board meeting will be at the Trang restaurant, 818 S Main St.

Dec 7 Wed

CLIMBING: WASATCH FRONT CLIMBING GYM

Going through winter withdrawal? Do you clutch your sticky rubber shoes to your breast and whimper as you gaze out the window at the snow? Well, get a grip! and Get Gripped with June Freedman (278-8501) and Herb Hayashi (255- 9652) at the gym. Meet about 5:30 till ? at 427 W. 9160 S. Price is about \$7 per visit or you can purchase a 15 ride pass for \$75.

Dec 7 Wed

SOCIAL: MOVIE NITE: Join your host at the Sugarhouse San Francisco Sourdough Pizza Co. at 6 pm to eat before catching a movie at the Cinemark Movies Ten that starts between 7-7:30. Call Ken (455-2825) with any questions. Co-listed with the Sierra Club Singles.

Dec 9 Fri

SOCIAL: SING-A-LONG 'NTD' Join Frank Bernard (533-9219) at 7 pm if you like folk singing. Bring your voice and/or guitar to 415 N. Center St. on Capitol Hill (about 130 W. 400 N.), and we'll entertain ourselves in this 100% audience participation event. Enthusiasm is required- talent is not. BYO snacks and beverages.

Dec 10 Sat

SKI TOUR: DAYS FORK (NTD+) Meet Larene Miller (278-8758) at 9 am in Lot #4. Skins recommended, call Larene about beacons and shovel.

Dec 10 Sat

SKI TOUR: LEADER'S CHOICE (MOD) Meet Leslie Woods (484-2338) at 9 am in Lot #2. Bring beacon, skins and shovel to seek out the good snow.

Dec 10 Sat

SNOWSHOE: LEADER'S CHOICE (MOD) Knick Knickerbocker (565-0910) will lead a moderate snowshoe tour in Big Cottonwood. Meet Knick at Butler Elementary School (2700 E. 7000S.) at 9:30 am.

Dec 10 Sat

SKI TOUR: SUPERIOR / MONTE CRISTO FROM ALTA (MSD) This is a very difficult tour, complete with exposure. This trip is not for the faint of heart or height! We'll meet at 9 am. Contact Pat McEwen (571-5033) for meeting place. Beacons, skins, and shovel are required.

Dec 10 Sat

MOUNTAINEERING SLIDE SHOW/SEASON SOCIAL

Everybody is invited to enjoy good company and slides from Mt. Robson. It was a fantastic climb! We might also get to hear about one of our member's climb on Denali this spring. Don't miss it!. The Westbrook's have graciously offered their home at 3270 E., Danish Hills Cir. (8185 S.). Take Creek Rd. to Deer Creek then south to house at the intersection. Call (942- 6071) if you get lost. Meet at 7:00 pm (no, this won't be an alpine start!): bring potluck goodies (I can't spell "horse derves"), and your own drinks. Climbing helmets are strongly recommended.

Dec 11 Sun

SKI TOUR: LOWER SILVER FORK (NTD) Meet Janet Chatwin (255-3732) at 9:30 am in Lot #2. Bring heavy touring skis and boots.

Dec 11 Sun

SKI TOUR: U.S.A. BOWL (MOD) Meet Karen Perkins (272-2225) at 9:00 am in Lot #4. Trudy calls this "Healy Bowl". Others call it "Mickey Mouse Bowl". Whatever its name, Karen invites you to help trash the powder!!!! Beacon, skins, and shovel are required.

Dec 11 Sun

SNOWSHOE: LEADER'S CHOICE (NTD) Tom Willis (485-0370) will lead a group of beginner snowshoers on an easy snowshoe tour in Big Cottonwood. Meet Tom at Butler Elementary School (2700 E. 7000S.) at 9:30 am.

Dec 14 Wed

CLIMBING: WASATCH FRONT CLIMBING GYM

Going through winter withdrawal? Do you clutch your sticky rubber shoes to your breast and whimper as you gaze out the window at the snow? Well, get a grip! and Get Gripped with June Freedman (278-8501) and Herb Hayashi (255- 9652) at the gym. Meet about 5:30 till ? at 427 W. 9160 S. Price is about \$7 per visit or you can purchase a 15 ride pass for \$75.

Dec 16 Fri

SOCIAL: ICE SKATING Join us for an evening of ice skating at Murray Park (5106 S., Murray Park Ave.). Admission is \$1.50 for adults and skate rental is \$.50. Call Sam (262-6698) for details.

Dec 17 Sat

SNOWSHOE: DESOLATION LAKE AREA (MOD) Knick Knickerbock (565-0910) plans to lead a moderate paced group to the meadow up Desolation Lake Trail, Big Cottonwood Canyon. Meet Knick at Butler Elem. School (2700 E. 7000 S. at 9:30 am.

Dec 17 Sat

SKI TOUR: CATHERINES PASS FROM BRIGHTON (MOD) Meet Mike Budig (328-4512) at 9:00 am at Butler Elementary (2700 E. 7000 S.). Beacons, skins and shovel required unless prior approval by leader.

Dec 17 Sat

SKI TOUR: FULL MOON PARK CITY TOUR (NTD) AND WHITE ELEPHANT CHRISTMAS PARTY 'MSD' Cheryl Soshnik (1-649-9008) couldn't decide—this would be the best night for either a full moon tour or a holiday season party. So she's going to combine both activities on the same night. Meet at Park City High School at 6:00 pm for the short ski tour in the Park City area. Bring a thermos of warm beverages, and head lamp or flashlight just in case mother nature hides the moon. Afterwards, join Cheryl for her traditional White Elephant Christmas Party. You'll need to call her for details on the party.

Dec 17 Sat

SKI TOUR: MILL CREEK DOGGIE TOUR (NTD) Tom Walsh (969-5842) says to bring your dog or your spouse, whichever can run faster, for this ski trip up Mill Creek Road. Meet Tom at Skyline High School at 9:00 am. Light touring skis work best.

Dec 17 Sat

SKI TOUR: REYNOLDS PEAK (MOD+) Call Clint Lewis (h-295-8645) or (w-569-7436) to register and for meeting time. Meeting place will be Butler Elementary School. Beacons, skins and shovel are required.

Dec 18 Sun

SKI CLINIC: AFTERNOON TELEMARQUE LESSONS AT ALTA Studly hero Brian Barkey (583-1205) will conduct a half day technique clinic for beginning telemark skiers. Bring money for an Albion Basin lift ticket. You need to call Brian by Dec 14 to register and to find out the meeting time and location. If you would like to help teach, call Brian as well.

Dec 18 Sun

LODGE SNOW SHOVELING PARTY Shovels and snow provided! Come and join the fun from 2-4 pm! Put it on your calendar! Call Rich Osborne (1-647-0205) for more details.

Dec 18 Sun

SKI TOUR: LEADER'S CHOICE (MOD) Monty Young's (255-8392) choice will depend on where he thinks he'll find the best snow today. Call him to register and to find out the meeting time and location. Beacons, skins, and shovel are required.

Dec 18 Sun

SKI TOUR: LEADER'S CHOICE (MSD) George Westbrook (942-6071) is thinking of either the American Fork Twins or the Pfeifferhorn. Call him to register and to find out the meeting time and location. Beacons, skins, and shovel are required.

Dec 18 Sun

SKI TOUR: SCOTTS PASS (NTD) Meet Tom Silberstorf (255-2784) at 9:00 am at Butler Elementary School for this early season favorite. Tom says you must have "heavier than light" touring boots.

Dec 18 Sun

SNOWSHOE: WHITE FIR PASS (NTD) Mark Jones (486-5354) plans to lead a beginners group to White Fir Pass above the Terraces Picnic grounds in Millcreek Canyon. Meet Mark at Skyline High School at 10 am.

Dec 19 Mon

SOCIAL: CHRISTMAS CAROLING We'll practice a bit, then carpool to two nearby nursing care facilities to sing carols and enjoy the spirit of the season. Meet at 6:30 pm at Polo Club condos—1450 E. Foxboro (3660 S.) #2. Rendez-vous afterward for doughnuts and hot cider. For more info—call Holly (278-5638) or Mary Ann (277-3127).

Dec 21 Wed

CLIMBING: WASATCH FRONT CLIMBING GYM Going through winter withdrawal? Do you clutch your sticky rubber shoes to your breast and whimper as you gaze out the window at the snow? Well, get a grip! and Get Gripped with June Freedman (278-8501) and Herb Hayashi (255-9 652) at the gym. Meet about 5:30 till ? at 427 W. 9160 S. Price is about \$7 per visit or you can purchase a 15 ride pass for \$75.

Dec 21 Wed

SOCIAL: MOVIE NITE Join this evening's host at the Sugarhouse San Francisco Sourdough Pizza Co. at 6 pm to eat before catching a movie at the Cinemark Movies Ten that starts between 7-7:30. Call Ken (455-2825) with any questions. Co-listed with the Sierra Club Singles.

Dec 24 Sat

SKI TOUR: LEADER'S CHOICE (NTD) Leader needed !! Call Sue Berg (576-0532) if you would like to go and/if you'd care to be the leader. Avoid those last minute Christmas shopping crowds. Why bump and grind through the crowded shopping malls when you can be serenely skiing in the splendor of the Wasatch back country?

Dec 24 Sat

SKI TOUR: UPPER GREENS BASIN (MOD) Meet Jim Piani (272-3921) at 9:00 am at Lot #2. This will be your last chance to be good before Santa's visit tonight, so make sure to bring your beacon, skins, and shovel.

Dec 24 Sat

SNOWSHOE: BOUNTIFUL FOOTHILLS (NTD) The tradition continues with this wonderful annual event. Explore the foothills above Bountiful on snowshoes with Clint, while Ruth gets the goodies ready for their Christmas Eve afternoon social. If you can not make the snowshoe trip, Clint and Ruth want you to know you are welcome to come to a cozy get together at their home in Bountiful. Call Clint for details (569-7436-w or 295-8645-h).

Dec 25 Sun

SKI TOUR: ALBION BASIN (NTD) Meet Ray Duda (272-4601) at 10:00 am at Butler Elementary School. This will be a great day to try out your new touring skis that Santa left under your tree last night.

Dec 28 Wed

CLIMBING: WASATCH FRONT CLIMBING GYM Going through winter withdrawal? Do you clutch your sticky rubber shoes to your breast and whimper as you gaze out the window at the snow? Well get a grip! and Get Gripped with June Freedman (278- 8501) and Herb Hayashi (255-9652) at the gym. Meet about 5:30 till ?. at 427 W 9160 S. Price is about \$7 per visit or you can purchase a 15 ride pass for \$75.

Dec 28 Wed

SKI TOUR: LEADER'S CHOICE (MOD) The downhill slopes are filled with a bazillion out of state skiers, so Sue Berg (576-0532) is going to do a mid-week getaway into the back country. Call her to register and to find out the meeting time and location.

Dec 31 Sat

SKI TOUR-UINTAS: BEAVER CREEK NEW YEARS RESOLUTIONS TOUR (NTD) Cheryl Soshnik (1-649-9008) doesn't dare get too far into the back country this year because of recent arm surgery, so she chose the groomed Beaver Creek Trail to kick and glide away the final frustrations of 1994. Ski and plan your New Years Resolutions for 1995. A generic car pool will meet at the Parleys Way K-Mart at 10:00 am, then meet the leader at 10:45 am at Park City High School. Track skis and light touring skis work best.

Dec 31 Sat

SNOWSHOE: MINERAL FORK LOWER MEADOW (NTD) Leslie Mullins (363-0560) plans to lead a leisurely paced group to the lower meadow of this picturesque spot in Big Cottonwood Canyon. Meet Leslie at Butler Elementary School (2700 East 7000 South) at 10 am. 2700 East 7000 South) at 9 am. She also suggests bringing something to share to help celebrate the arrival of the New Year. Call for more details.

Dec 31 Sat

SNOWSHOE: MOUNT AIRE (MOD+) Brad Yates (359-4913) plans to lead a group of experienced snowshoers up Millcreek Canyon to Mount Aire. Meet Brad at Skyline High School at 8:30 am.

Dec 31 Sat

SOCIAL: FIRST NIGHT CELEBRATION Come celebrate the new year with WMC members-festivities sponsored by the Downtown Alliance. There will be 17 different venues this year with singing, storytelling, and other performers. Action runs from 4 pm to 12:30 am. Admission button cost \$5-possible group discount. Meet at 6:30 to carpool at 1261 Yale (1080 S.). For further details, contact Lori (583-8133).

Jan 1 Sun

SKI TOUR: SNOWPACK ANALYSIS/AVALANCHE AWARENESS: Jim Frankenfield, our own avalanche expert will lead another teach and tour trip. Learn how to stay out of avalanches and how to stay alive in the back country. You'll have to be at least a MOD skier. Skins, beacons, and shovels are required. Please contact: Jim (1-800-289-4403-in the U.S.) or if you have a computer: (snowman@aip.org) for more information.

Jan 1 Sun

SKI TOUR: CRACK OF NOON (NTD+) Happy New Year!!!! This traditional tour continues in fond memory of Wick Miller who led this tour for many years. Sleep in, take a few aspirins, and then meet Tom Silberstorf (255-2784) at 12:00 noon at Butler Elementary School. Tom will pick a destination, and make sure to bring beacons, skins, and shovel.

Jan 4 Wed

BOARD MEETING: Attend the WMC Board Meeting at 7:30 pm at the Club office, 888 S 200 E. A pre-board meeting will be at the Trang restaurant, 818 S Main St.

Jan 4 Wed

SOCIAL: WEDNESDAY NIGHT AT THE MOVIES We'll meet at 6 pm at a Sugarhouse restaurant, or join us by 6:50 to catch the flick. Give Ken a call for exact location (455-2825). Co-listed with Sierra Singles.

Jan 4 Wed

CLIMBING: WASATCH FRONT CLIMBING GYM Going through winter withdrawal? Do you clutch your sticky rubber shoes to your breast and whimper as you gaze out the window at the snow? Well, get a grip! and Get Gripped with June Freedman (278-8501) and Herb Hayashi (255- 9652) at the gym. Meet about 5:30 till ? at 427 W. 9160 S. Price is about \$7 per visit or you can purchase a 15 ride pass for \$75.

Jan 6 Fri

SOCIAL: OUTDOOR ICE SKATING Meet at the Triad. Give Dave (486-1878) a call for details and meeting time.

Jan 7 Sat

SKI TOUR: UINTAS NORWAY FLATS (NTD+) Gail Stockslager (582-1429) leads this Uinta Mountains tour. Meet Gail at the Parley's Way K-Mart at 9:00 am.

Jan 7 Sat

SKI TOUR: PFEIFFERHORN (MSD) Call Walt Haas (534-1262) to register. Beacon, skins, and shovel required.

Jan 7 Sat

SKI TOUR: POWDER PARK (MOD) George Swanson (466-3003) will meet you at 9:00 am at Butler Elementary School. Beacon, skins, and shovel required.

Jan 7 Sat

SNOWSHOE: REYNOLDS PEAK EXPLORATORY LOOP (MOD+) Knick Knickerbocker (565-0910) does not recommend this trip for beginners. He plans a different descent down Reynolds Peak, snow permitting, and feels it will be a strenuous snowshoe experience. Meet Knick at Butler Elementary School (2700 East 7000 South) at 9 am.

Jan 7 Sat

SNOWSHOE: SILVER FORK (NTD) Christine Allred (261-8183) will lead a group of snowshoers on a very pleasant snowshoe tour up Big Cottonwood. Meet Christine at Butler Elementary School (2700 East 7000 South) at 9:30 am.

Jan 7

ICE CLIMBING: Join Larry Coulter (485-9623) for a beginners to advanced ice climbing in Provo Cyn-something for everyone.

Jan 7-8 Sat-Sun

SKI TOUR AND/OR SNOWSHOE: TUNA Yurt (NTD) Who says oil and water don't mix? An experiment to mix snowshoers and skiers is proposed for the TUNA Yurt in the Uintas near the Provo River. The yurt has propane cooking and lights, firewood and a stove, plus miscellaneous pots, pans, etc. Participants needs to bring sleeping bags, cloths, food, and your preferred snow-locomotion-devices. There is room for 6 participants (8 if everyone is tiny). Cost will vary from \$18 to \$30 for the weekend. Call Tom Walsh (969-5842) no later than December 9 to register for the trip.

Jan 8

SOCIAL: TAILGATING AND TUBING Meet at the Big Cottonwood Park & Ride at 1:00 pm. Bring an inner tube, if you have one, your own beverage, and a snack to share. Questions??? Call Dave (451-7675) or Bob (943-5755).

Jan 8 Sun

ENTERTAINMENT PLANNING MEETING Wanted: Fun loving folks to help plan and/or host WMC socials. Come with your ideas for a strategy session at 3705 Golden Hills Ave. (8785 S.). Refreshments at 6:30, planning starts at 7. Call Sam (262-6698) or Mary Ann (277-3127) if you have any questions. Hope to see many of you there!!! !! !! !!

Jan 8 Sun

SKI CLINIC-UINTAS: AUDREY KELLY MEMORIAL CROSS COUNTRY SKI INSTRUCTION CLINIC (EL) Harry Kimbrough (288-1858) will be heading this traditional instructional clinic for entry level skiers. This year, he's going to the Beaver Creek Trail in the Uintas, where the terrain and the track are excellent for beginning skiers. Plan on bringing a gourmet sack lunch and something special to share with your fellow skiing novices. After lunch, we will offer several short tours into the Uintas where you can practice your newly learned skiing skills. You will be meeting to car pool at 9:00, assuming the weather is good. If it's too snowy or miserable this day, Harry will reschedule the clinic for next Sunday. To plan for the appropriate number of leaders, and to get on the calling list if the clinic needs to be re-scheduled, Harry would like you to pre-register for the clinic this year. Unlike past years, there will be no fee for this special day of instruction. Leaders, if you are interested in helping Harry with the clinic, please give him a call as well. Any kind of light track or touring skis are appropriate.

Jan 8 Sun

SKI TOUR: LEADER'S CHOICE (MOD) Leslie Woods (484-2338), the ski babe, will meet you at 9:00 am at Butler Elem. School. Beacon, skins, and shovel required.

Jan 8 Sun

SKI TOUR: LEADER'S CHOICE (MSD) George Westbrook (942-6071) might take you to Box Elder if the snow conditions are good. You must call him to register for this difficult but fun trip. As usual, beacon, skins, and shovel are required.

Jan 8 Sun

SKI TOUR: SCOTTS PASS (NTD) Tom Walsh (969-5842), the mountain stud, will lead this nice tour. Meet him at Butler Elementary School at 9:00 am. Bring skins, wear heavy ski boots, and if you have a beacon and shovel, bring them along.

Jan 8 Sun

SNOWSHOE: ALTA AREA (NTD) Doug Stark (277-8538) will lead a leisurely group of snowshoers into beautiful Albion Basin above Alta for this tour up Little Cottonwood. Meet Doug at Butler Elementary School (2700 East 7000 South) at 9 am.

Jan 11 Wed

CLIMBING: WASATCH FRONT CLIMBING GYM Going through winter withdrawal? Do you clutch your sticky rubber shoes to your breast and whimper as you gaze out the window at the snow? Well get a grip! And Get Gripped with June Freedman (278-8501) and Herb Hayashi (255-9652) at the gym. Meet about 5:30 till ?. at 427 W. 9160 S. Price is about \$7 per visit or you can purchase a 15 ride pass for \$75.

Jan 11 Wed

SOCIAL: INDOOR ROLLERBLADING We'll be meeting at the Galleria. Call Dave (486-1878) for meeting time.

Jan 14 Sat

ICE CLIMBING: This is part deux of last week's clinic but if you missed last week, come anyway! Graduates of Part 1 who did their pull-ups this week can try something more advanced. Register with Larry Coulter (485-9623).

Jan 14 Sat

SKI TOUR: LEADERS CHOICE (MSD) Call Craig Stevry (581-9572) to register and to find out what difficult ski tour he has chosen. Of course, beacon, skins, and shovel are required.

Jan 14 Sat

SKI TOUR: LOWER SILVER FORK (NTD) Meet Leader Ron Thole (569-0121) at 9:00 am at Butler Elementary School.

Jan 14 Sat

SKI TOUR: POWDER PARK (MOD) Dallas Chopping (292-6298) will lead you to the powder! Meet at 9:00 am at Butler Elementary School. Beacon, skins, and shovel are required.

Jan 14 Sat

SNOWSHOE: DOG LAKE TO BEAR TRAP LOOP (MSD)
Norm Pobanz (266-3703) will lead a group of hardy snowshoers to Dog Lake then plans to go up Little Water Peak to Desolation Lake and then come down Bear Trap. Call Norm to register.

Jan 14 Sat

SNOWSHOE: GREENS BASIN (NTD) Mark Jones (486-5354) will lead a group of snowshoers to this beautiful hidden meadow. Beginners are more than welcome on this tour. Meet Mark at Butler Elementary School (2700 East 7000 South) at 10 am.

Jan 14 Sat

SOCIAL: COUNTRY WESTERN AND LINE DANCING
Give Linda (943-1871) a call for details.

Jan 15 Sun

SKI TOUR-UINTAS: UPPER SETTING ROAD (NTD+)
Phyllis Anderson (943-8500) will meet you at the Parleys Way K-Mart at 9:00 am for this pleasant tour in the Uintas. Get her talking, and Phyllis may continue skiing 6 miles up the road. Bring lunch and ski wax or skins, but you don't need a beacon or shovel.

Jan 15 Sun

SKI TOUR: BRIGHTON-TWIN LAKES PASS-SILVER FORK (MSD) Larry Stewart (944-0213) will lead this long tour. Call him for details, or meet Larry at 9:00 am in Lot #3. Beacons, skins and shovel are required.

Jan 15 Sun

SKI TOUR: LEADER'S CHOICE (MOD) Pat Kottcamp (467-7231) is scouring the hill-sides for the best snow. Call him to register and to find out the meeting time and place for his ski tour. Beacons, skins and shovel are required.

Jan 15 Sun

SNOWSHOE: DOG LAKE (NTD) Join Janet Friend (268-4102) on this leisurely snowshoe trip through the aspens up Mill D. Meet Janet at Butler Elementary School (2700 East 7000 South) at 9:30 am.

Jan 15 Sun

SNOWSHOE: RED PINE (MOD) Mohamed Abdallah (466-9016) will lead a group of intermediate snowshoers on the popular Red Pine Trail. Meet Mohamed at Butler Elementary School (2700 East 7000 South) at 9 am.

Jan 16 Mon

SKI TOUR: MARTIN LUTHER KING TOUR (NTD)
Government worker Tom Walsh (969-5842) is honoring all Civil Rights advocates by leading a ski tour. He may go back up to Scotts Pass to get a jump on the competition before next week's Wasatch Overland. Call Tom to register and to find out the meeting time and location.

Jan 18 Wed

CLIMBING-WASATCH FRONT CLIMBING GYM: Going through winter withdrawal? Do you clutch your sticky rubber shoes to your breast and whimper as you gaze out the window at the snow? Well get a grip! And Get Gripped with June Freedman (278-8501) and Herb Hayashi (255-9652) at the gym. Meet about 5:30 till ? at 427 W. 9160 S. Price is about \$7 per visit or you can purchase a 15 ride pass for \$75.

Jan 18 Wed

SOCIAL: WEDNESDAY NIGHT AT THE MOVIES
We'll meet at 6 pm at a Sugarhouse restaurant, or join us by 6:50 to catch the flick. Give Ken a call for exact location (455-2825).

Jan 19 Thu

AVALANCHE CLASS PART I: INSTRUCTION The first part of the annual avalanche class sponsored by the WMC will be held at the First Unitarian Church (569 S. 1300 E.) from 6:30 to 9:30 pm. It will be taught by Bruce Tremper of the US Avalanche Forecast Center. Bruce will cover reasons for avalanches, snow mechanics, route finding, back country safety, digging snow pits, avalanche avoidance, and rescue techniques if you or someone else are caught in an avalanche. Clinic to continue at noon Sun. with rescue beacon practice; class is open to the public. All winter outdoors folk are encouraged to attend: skiers, snowshoers, climbers, etc. A donation of \$5 is requested to defray the cost of giving the class and for refreshments. Call Ski Director Brian Barkey (583-1205) if you have any questions.
BRING A FRIEND-SAVE A LIFE!

Jan 21 Sat

ICE CLIMBING—ADVANCED: We need a leader to organize an advanced ice climb to some cool area like The Great Icesickle or Santaquin Canyon. To register to go or volunteer to lead, call Kyle Williams (567-9072).

Jan 21 Sat

SOCIAL: AWARDS BANQUET AND DANCE Bring a friend or come on your own to this gala annual event. Our agenda includes presentation of awards, nominations for the 95/96 Board, dining, dancing, fun!!! Cost: \$19 per person. Place: The Riverboat (4393 S. Riverboat Rd.—815 W.). Music: Wind River Band. Plenty of parking, a cash bar will be available (**no brown bagging please**). Reservations must be received by Jan. 14. (See reservation form on p.35) For further details, call Mary Ann (277-3127) or Sam (262-6698).

Jan 21-23 Sat-Mon

SKI YURT TRIP: LOGAN CANYON STEAM MILL YURT (MOD) The WMC has made reservations for a two nights and three day stay for 6 skiers or snowshoers at this beautiful yurt in Logan Canyon. You will climb 1500' in 3.5 miles to get to this yurt. The cost will be about \$50 per person: We will have to pack in our food and sleeping bags. You must call yurt coordinator Tom Walsh (969-5842) ASAP to register—these trips fill up fast and there is a firm limit of six participants.

Jan 22 Sun

AVALANCHE CLASS PART II: AFTERNOON PRACTICE WITH BEACONS AND SHOVEL This is the clinical part of the avalanche class. Everyone who plays in the back country in the winter is encouraged to attend this annual beacon practice, even if you didn't attend last Thursday's lecture. Meet at 12:00 noon at Butler Elementary School. We will car pool up to the Spruces Campground for the practice. Bring beacons and shovels if you have them. If you are willing to help lead a section of this practice, please call Ski Director Brian Barkey (583-1205).



*Halloween Fun at
the Lodge
Photos by Al Bremner*

CAR POOL PARKING LOTS FOR SKIING AND SNOW-SHOEING

Please Note New Meeting place for Big & Little Cottonwood Canyon Snowhoe/Cross Country Ski Tours. Meet at BUTLER ELEMENTARY SCHOOL (2700 E. 7000 S.) parking lot south side of the school. This is just east of Hillside Shopping Center at the top of the hill. With parking very limited this year, car pooling is highly recommended and remember to reimburse the driver.

These county parking lots can still be used for car pooling up the canyons and are numbered from west to east. County time restrictions are to be followed. (No parking 10 pm to 8 am). Numbered designations are those of the WMC only, and are used for easy access and identification. All parking lots are on the north side of Fort Union Blvd. **Please Carefully Note where to meet for your tour leader.**

All addresses are approximate

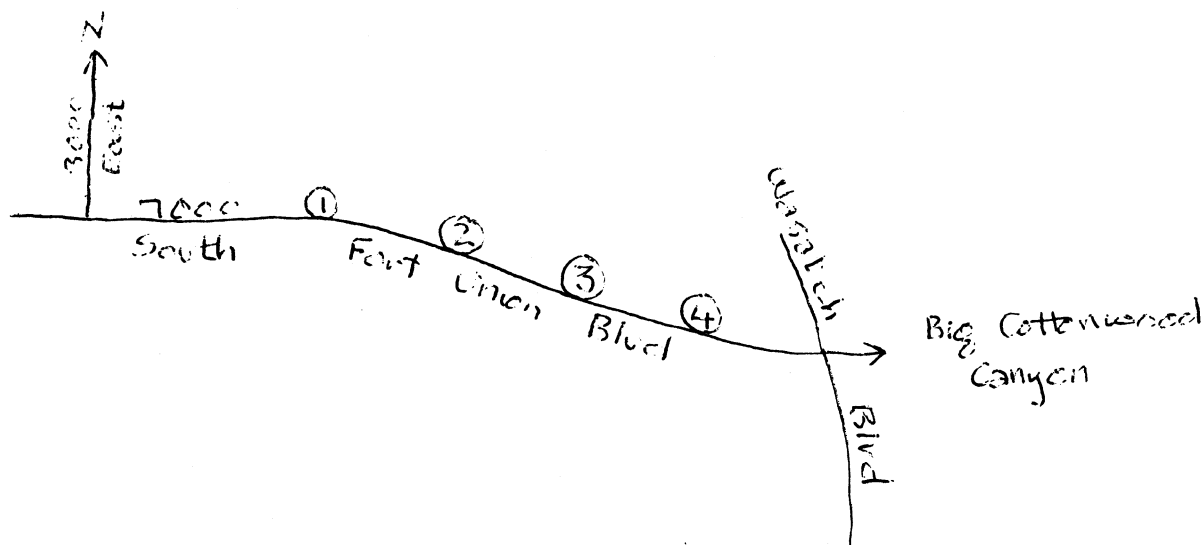
Car Pool Parking Lot (CPPL) No. 1
3360 East Fort Union Blvd. (7090 South)
5 cars EPC

CPPL No. 2
3220 East Fort Union Blvd. (7000 South)
10-15 cars Estimated Parking Capacity (EPC)

CPPL No. 3
3420 East Fort Union Blvd. (7140 South)
7 cars EPC

CPPL No. 4
3600 East Fort Union Blvd. (7225 South)
10-15 cars EPC

map



Wasatch Mountain Club T-Shirts—Still Available

Cost: \$10.00

Sizes: Medium, Large and X-Large

For Sale at Club office during office hours—363-7150 to reserve yours

COMING ATTRACTIONS

- Jan 25 **CLIMBING—WASATCH FRONT CLIMBING GYM:** Going through winter withdrawal? Do you clutch your sticky rubber shoes to your breast and whimper as you gaze out the window at the snow? Well get a grip! And Get Gripped with June Freedman (278-8501) and Herb Hayashi (255-9652) at the gym. Meet about 5:30 till ?, at 427 W. 9160 S. Price is about \$7 per visit or you can purchase a 15 ride pass for \$75.
- Jan 27 **SOCIAL: A NIGHT AT THE OPERA** Join us for the Utah Opera production of *Salome* at 7:30 pm. We'll meet for dinner/desserts before the performance. Call Liz (484-3740) as ASAP for details. Tickets go fast.
- Jan 29 **SOCIAL: 8th ANNUAL SPAGHETTI PARTY AT VINCENZO DESIMONE'S** Starting at 7pm, enjoy Italian cuisine and fellowship by the fire with coffee and hot chocolate provided. Cost \$5 per. Bring your own other drink choices. Directions: Take I-80 to Park City exit, turn left at Meadows Dr. (a short distance before the Radisson Hotel), drive to the crest of the hill, turn left and up the hill to the 'T', turn right and look for the U.S. flag flying high! No children or pets. Call Vince (801-649-6805).
- Feb 10-11 **SKI TOUR AND/OR SNOWSHOE: TUNA Yurt (NTD)** Further experiments combining snowshoeing and skiing at the the TUNA Yurt in the Uintas near the Provo River. The yurt has propane cooking and lights, firewood and a stove, plus miscellaneous pots, pans, etc. Participants need to bring sleeping bags, clothes, food, and your preferred snow-locomotion-devices. There is room for 6 participants (8 if everyone is tiny). Cost will vary from \$18 to \$30 for the weekend. Call Tom Walsh (969-5842) no later than December 9 to register for the trip.
- Feb 24-26 **SKI YURT TRIP: LOGAN CANYON BUNCHGRASS YURT (MOD)** The WMC made reservations for a two night stay at this yurt. Bunchgrass is a 2000' climb in 4 miles. The cost will be about \$50 per person. We will have to pack in our food and sleeping bags. You must call yurt coordinator Tom Walsh (696-5842) ASAP to register as there is a limit of 6 participants.
- Mar 11-13 **SKI YURT TRIP: LOGAN CANYON STEAM MILL YURT (MOD)** Check your calendar now—this trip is filling fast. A limit of 6 for this three day and two night stay. Cost will be about \$50 per person. We will have to pack in our food and sleeping bags. You must call yurt coordinator Tom Walsh (696-5842) ASAP to register.
- Apr 24-27 **GRAND CANYON PHANTOM RANCH GET-A-WAY:** A resort vacation with scenic strolls, remote beaches, high stakes gambling (nickel limit), intimate accommodations and delicious food awaits you. There are still a few spots left or get on the waiting list. Cost for the ranch (two nights, six meals) is about \$120 per person). The cost of lodging and food on the south rim are extra. There will be an optional day spent backpacking in on the Hermit Trail (subject to obtaining a permit) starting on the 23rd. A deposit of \$50 is required. For more info: Mike Eisenberg (572-2676).
- Apr 95 **HAUTE ROUTE—SWISS ALPS** Yes boys and girls, this is the real thing! Start planning now and join George Westbrook (942-6071) for this once in a lifetime trip! This will be a semi-private guided trip, costing only about \$1500, including travel expenses!. Don't miss this!
- Jun 96 **MOUNTAINEERING—DENALI, ALASKA** They don't get any bigger than this on this continent! Start planning now to join Larry Coulter for this twice in a lifetime (if you're a hard-person like Larry) chance to climb Denali. Register (485-9623) to start training to carry heavy loads, stay storm-bound for 5 days straight in a small tent, and try to keep from hating your best friend who whistles off-key and clicks his teeth during the aforementioned 5 day storm!

PRESIDENT'S MESSAGE

Jerry Hatch

Long before dawn on Saturday, October 22nd, I arrived at the Park & Ride on 72nd South, ready to lead the Wick Miller/Carl Bauer Memorial hike up to Notch Peak. There was no one there when I arrived—fifteen minutes early. This was different than in the old days; Wick used to leave exactly at six, so everyone got there early. By six fifteen, everyone finally arrived, and were clambering into the four cars that would take us to the peak.

The wide scattering of faint stars suggested that the day would be fair, (the week's delay saved us from some snowy hiking). It was so late in the year that the skyline of the Wasatch didn't emerge from the blackness until we were almost to Santaquin. Full morning was upon us by the time we got to Eureka, however, poor, tumbled down, picturesque Eureka was still in its slumbers. Hank Winawer commented, "The only thing open in this town is the coke machine."

Heading out across the great valley of the Sevier, I remembered that the drive is as much an enjoyable part of the Notch expedition as the hike. Crossing a marshy area north of the retreating mirror of the Sevier (not quite) Dry Lake, I noticed that the tamarisk bushes were turned a creamy yellow by the approach of winter. The other ubiquitous yellow was the deep mustard of the rabbit brush that dappled the hills above the lake.

The hike up to the peak took longer than I remembered, nearly three hours. The quietness was wonderful. Except for an occasional distant bird song, there was no noise at all. This silence was rich with the faint suggestions of timelessness and inner peace; rich with the hope of a more profound reality than the all consuming late twentieth century buzz.

All the way up Sawtooth Canyon I looked around to see if there were any pictures worth taking. My old friend, Howard

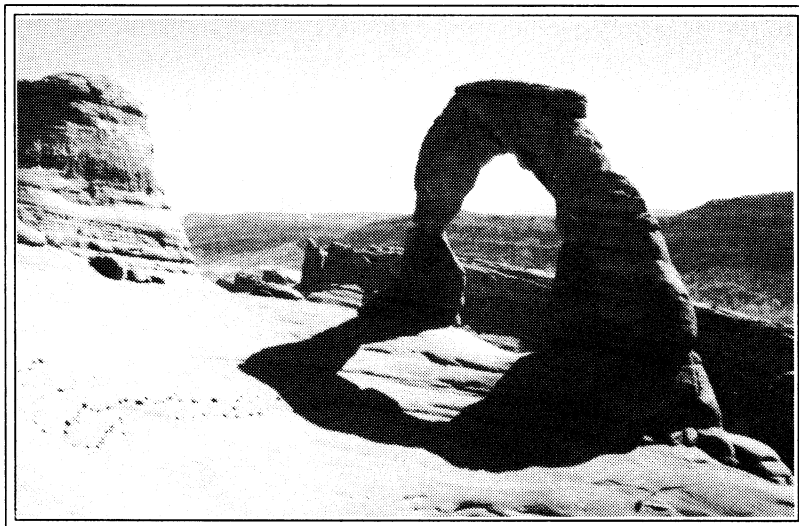
Wilkerson, assures me that photography encourages you to see, even if you don't take any pictures. Part way up the canyon, I took a picture of junipers back-lit by the sun above a deeply sculpted rock. Even if it doesn't make much of a picture it remains a beautiful image in my mind.

When we stopped for a snack, I complained about the antiquity of my gorp. Hank suggested that I should throw out any raisins that had legs.

The steepness of the final pitch emphasized my approach to middle age,...huff, huff. On top, the view though obscured by haze, was still impressive. All around, above the brown desolation, the white combs of the western mountains stood like sentinels guarding their territorial domain. To the north, just a few feet away, the end of the world: I approached, as close as I dared, and tried to look down; I couldn't help but think of Nietzsche's warning against gazing into the abyss, least the abyss gaze into you.

The hike back was mostly in shadows; the afternoon sun only rarely found its way down to the canyon floor. There were shadows in my mind also. It was only a year ago that Wick rushed down the trail to get help for me. Now a lost friend. I thought a little about gentle Carl Bauer, whose memory is held in such warm affection by the older Club members. Another lost friend, although we never met. (Below the pour-off we stared in awe at the shattered stump of a once titanic pine.) Death is a given, of course. Only, in some strange, subtle way it seems inappropriate. Or, at least it does for me; I'm in complete agreement with Forrest Gump, "Ah don't like it a-bit."

In a pool of sunlight, the bushes stood vivid against the gray canyon sides. Nothing to be done except follow the old adage, 'let us live while we live'. Well yes,...but beyond seeing and experiencing, don't we also need to understand—and remember? We are who we are because of our relationships, and given the ephemeral nature of so many of our relationships, might we not keep in mind those that we have lost? (In the far distance, a tall gray bearded man walks with a small excited dog).



Delicate Arch photo by Kyle Williams.

FROM THE BOATING DIRECTOR

by Gene Jarvis

It's time to apply for the river permits for the 1995 boating season. You don't necessarily have to lead the trip, just apply for the permit and we will see about finding a trip leader or river guide as needed. Note the different deadlines for getting the applications filed.

Normally, we recommend you apply for between 15 people and the maximum number allowed for that particular river. Or, you can say something like, "Applying for 25 people, but will accept as few as 8". The trip leader can always reduce the number of participants a month or so prior to the trip if it looks like the sign-up rate will be low. If you have other questions when filling out your application, give me or one of the coordinators a call.

At the November 9th meeting, we established some rough time periods for launch dates for several rivers: Cataract Canyon, 2nd week of Sept. 9/12-13; Desolation Canyon, last week of May 5/22-23 and the 3rd week of July 7/17-18; Hell's Canyon, Call for cancel-

lations if there interest and we don't have enough other permits. Lodore, mid-May 5/15-16; Yampa, late April 4/24-25 and mid-June 6/13-14; Rogue, 3rd week of August 8/14-15;

Main Salmon, 1st week of August 8/6-7; Middle Fork Salmon, 1st week of June 6/5-6;

San Juan, early-May 5/8-9; and end of June 6/26-27; Westwater, Any Saturday or Sunday in July, August or September (especially full moon weekends and put Saturday as your first choice for Westwater) These dates are the launch dates, not the trip duration. If you are interested in participating in any of these trips, please submit an application. The cost of filing will be credited back to you when the trip is run, if you can show that you applied for the permit.

There was also some discussion about other non-permit trips, like the Arkansas, Payettes, Gunnison Gorge, etc. that we will work into the plan after the permit rivers are issued and during our season planning meeting in April.

RIVER PERMIT APPLICATION INFORMATION FOR 1995 PERMITS

CATARACT CANYON

Canyonlands National Park
125 West 200 South
Moab, UT. 84532
801-259-7167
System: FCFS
To Agency: After Jan 1

DESOLATION CANYON

Bureau of Land Management
900 North 700 East
Price, UT. 84501
801-637-4584
System: Lottery
To Agency: Dec 1-Jan 31

GRAND CANYON

Grand Canyon National Park
Box 129
Grand Canyon, AZ 86023-1029
602-638-7843
System: FCFS (Long Wait List)
To Agency: Feb First Time/Jan to renew

ROGUE

U.S. Forest Service
14335 Galice Road
Merlin, OR. 97532
503-479-3735
System: Lottery
To Agency: Jan 1-Feb 12

MAIN SALMON*

North Fork Ranger District
Box 180
North Fork, ID. 83466
208-865-2383
System: Lottery
To Agency: Dec 1 - Jan 31
Send SASE with Application request

MIDDLE FORK SALMON*

Middle Fork Ranger District
Box 750
Challis, ID. 83226
208-879-5204
System: Lottery
To Agency: Dec 1 - Jan 31

(con't on page 20)

RIVER PERMIT APPLICATION INFORMATION FOR 1995 PERMITS

HELL'S CANYON *

Hell's Canyon National Recreation Area
Box 699
Clarkston, WA 99403
509-758-1957
System: Lottery
To Agency: Dec 1 - Jan 31

SELWAY*

District Ranger
West Fork Ranger District
6735 West Fork Road
406-821-3269
Darby, MT. 59829
System: Lottery
To Agency: Dec 1 - Jan 31

LODORE and YAMPA

River Ranger
Dinosaur National Monument
Box 210
Dinosaur, CO. 81610
801-374-2468
System: Lottery
To Agency: Dec 1 - Jan 31

WESTWATER CANYON

BLM: Grand Resource Area
885 S. Sandflats Road
Moab, UT. 84532
801-259-4421 or 259-8193
System: Lottery
To Agency: Dec 1 - Jan 31

SPLIT MT. (GREEN) "DAILY"

Same address and phone as Lodore
System: FCFS by phone
To Agency: Mar 1 or after

Notes: Some lottery rivers have a "call in for open dates" system after the drawing

FCFS is First Come First Served
SASE is Self Addressed, Stamped Envelope

SAN JUAN

BLM: San Juan District
Box 7
Monticello, UT. 84535
801-587-2141
System: Lottery
To Agency: Dec 1 - Jan 31

*Only send to one of these 4 addresses
(the application is for all 4 rivers)



WMC Regular River Rats—Gates of Lodore River Trip Photo by Phyllis Anderson

FROM THE BOATING COMMITTEE

Listed below are the dates for which the Club is seeking permits. We have tried to space the trips throughout the year, with minimal overlap to ensure sufficient equipment for all the trips. If you would like to apply for a permit, we would urge you to request the dates as listed below. Specifically, we could use more applicants for the Middle Fork of the Salmon, the Rogue and Westwater. Please coordinate your applications with the Boating Director.

<u>River</u>	<u>April</u>	<u>May</u>	<u>June</u>	<u>July</u>	<u>August</u>	<u>Sept</u>
Cataract Cyn (4-5 days)						12 or 13
Desolation (4-5 days)		22 or 24		17 or 18		
Hells Cyn (after lottery)						
Yampa (5days)	24 or 25		13 or 14			
Gates of Lodore (4-5 days)		15 or 16				
Rogue (3-4 days + tvl)					14 or 15	
Main Salmon (4-5 days)					6 or 7	
Middle Fork Salmon (5-6 days)			5 or 6			
San Juan (4-5 days)		1 or 2	26 or 27			
Westwater (wkend-full moon)	15	13	10		12	8 also Oct 8
Selway (tough to get)						

Snow Stability and Avalanches

Part 2 of 5—Weather

Snow Stability and Avalanches

by Jim Frankenfield

When most people think about weather and its relation to snowpack stability they think of new snow. The weather affects the snowpack in many ways, even when it is not currently snowing. Following the weather between outings is helpful in interpreting snow pit data and other observations in the field. There is a certain satisfaction in digging a snowpit and not only being able to identify layers but knowing when and how they formed. This is a good reason to call your local avalanche forecast number frequently between trips.

New Precipitation

The vast majority of avalanches occur during or shortly after a storm. Given enough time, most snowpacks will adjust to the new load of fresh snow. However, the amount of time which constitutes 'enough' can vary widely and depends on the structure of the snowpack. Since this structure varies with aspect (direction), elevation, and other factors, some slopes will stabilize more quickly than others.

Important factors concerning the new snow layer include its bond with the old snow surface and density changes which occur within the new snow as the storm progresses. Crusts and slabs are examples of surfaces that new snow tends to bond poorly with. New snow density typically decreases as a storm progresses. In those cases where the density increases or fluctuates widely heavier snow can be deposited on top of lighter snow, leading to instability within the new snow.

If the precipitation comes in the form of graupel or rain it generally has an adverse effect on stability. Graupel consists of snowflakes which accumulated so much rime ice on their journey through the atmosphere that they are spherical. They are more stable, thermodynamically, than dendritic crystals and take longer to stabilize. Graupel can cause loose snow sluffs and slides when enough snow accumulates on top of it. It can occasionally persist for quite a while as a buried weak layer. Rain wreaks havoc when it percolates into the snowpack. Free water tends to make weak layers weaker. It can also flow along planes parallel to the ground, such as crusts, lubricating bed surfaces.

Wind

Wind is one of the most important factors affecting the mountain snowpack. It can cause large accumulations of

snow through redistribution of existing as well as new snow. The wind takes snow from the windward side of ridge lines and deposits it on the lee slopes. These ridge lines may be along ridge tops or they may extend downward (such as the ridges separating the slide paths along the north side of Little Cottonwood Canyon). Rates of wind deposition of at least 45cm/hr have been observed.

Cornices often form over these lee slopes where 'wind slabs' form. If part or all of the cornice collapses it often triggers the slope below. Cornices often fracture back further than most people expect. They have caused numerous accidents and should be given as much leeway as possible.

Heat Exchange at the Snow Surface

The radiation balance at the snow surface is usually the primary factor in heat exchange. Snow is a very efficient radiator of energy in the visible and infrared part of the spectrum. One effect of this is the formation of surface hoar on cold clear nights. Surface hoar is the equivalent of dew. It typically forms as large flat crystals which sparkle in the sunlight. Large accumulations of surface hoar often build up on shaded aspects during temperature inversions.

During the day the snow absorbs energy from short-wave UV radiation. The ratio of the amount of this radiation reflected to the amount incident is called the albedo, which varies from 60% to 85% for clean snow. (Albedo is an important geophysical parameter in general, particularly in remote sensing.) On sun exposed slopes the combination of short-wave heating and long-wave cooling results in very steep temperature gradients near the snow surface, causing a variety of weak surface layers involving recrystallized snow and/or crusts.

The radiation balance at the surface also effects the metamorphism (crystal changes) of the snow below the surface. Stability of the snowpack depends partly on the layering caused largely by metamorphism, surfaces formed between storms, wind slabs, and new snow. Metamorphism and stability will be discussed in the next part.

Questions, comments, suggestions, and other feedback is welcome. I may be contacted at 1338 Foothill Drive #170, SLC, 84108 or on the internet at snowman@aip.org.

AVALANCHE TRANSCEIVERS (BEACONS)

by Jim Frankenfield

In recent discussions I have found that a certain amount of confusion exists concerning beacon frequencies and search methods. The frequency standard in this country is changing, and this will have implications for Wasatch Mountain Club trips.

History: The avalanche transceiver was introduced in this country about 25 years ago. The original units operated at a frequency of 2275Hz. Further development of the technology in Europe led to widespread use of units operating at 457kHz (457000Hz) there. In 1986 the European frequency was adopted as the international standard. 457kHz has been adopted as the US standard effective January 1, 1996.

Due to the adoption of the European frequency as the international standard, dual-frequency units have dominated the US market for several years. Beginning this year, single-frequency 457kHz units will be actively marketed in the US.

Range: There seems to be a lot of confusion concerning the effective range of the various units. The higher European frequency (457kHz) is a better operating frequency, and beacons operating at only this frequency will transmit further (per unit of power) than beacons operating at only the lower (2275Hz) frequency. This is due to the electromagnetic properties of snow and their variation with frequency. Dual-frequency units have a lower range partly due to the fact that part of their power goes into transmitting at the lower inefficient frequency and partly because the antenna coil can not be designed to be ideal for both frequencies at once.

Search Methods, Features, and Practice: In addition to the 'traditional' search method there is another

method known as the 'field line' or 'induction' method. This involves following the magnetic field lines towards the source. References have been made, erroneously, to 'beacons which work this way'. This is a method of searching, not a type of transceiver. The method can be used with any type of beacon, and has been in use by some people for quite some time. When done properly, it is claimed to be a faster method.

New units are touting all kinds of features, some of which may help one conduct a field-line search more efficiently. While some of the new features are probably helpful, they do not reduce the need for practice. Very few people invest enough time in practice. Learning to use a new method involves an even larger investment of time. Practice often. If you are unfortunate enough to have to search for a person use the method you know best from your practice sessions.

Club Trips: With the advent of single frequency 457kHz units on the US market there is now a possibility that two units will not be able to 'communicate' with each other. People owning the old 2275Hz-only units should purchase new units soon. The club should consider making, or let leaders make, some policy concerning the units to be carried by trip participants. In the absence of any policy, it would be advisable to do a beacon test at the trailhead or parking area. All participants should put their units in receive mode, and then one person at a time should transmit. Make a note of any beacons which cannot hear each other. This also checks that each unit is functioning properly. Put new batteries in now, and carry a spare set in your pack in case you find you need them at the trailhead check.

FROM THE MOUNTAINEERING DIRECTOR

by Kyle Williams

"One cannot climb at all unless he/she has sufficient urge to do so. Danger must be met, indeed it must be used to an extent beyond that incurred in normal life. That is one reason people climb. For, in response to challenge does a person become their best". By 'Ax' Nelson, early Yosemite Pioneer.

Thursday climbing is stormed out, but I'll see you at the gym and on the ice! Climbing season is never over!

Love, Kyle

MORE STUFF FROM A SKI DIRECTOR

by Brian Barkey

First of all, the good news. We've found a better place to park: Butler Elementary School at 2700 E. and 7000 S. This will be the place ski and snowshoe tours in the Cottonwood Canyons will start from, unless otherwise noted. Some leaders may still prefer to meet at the Park & Ride spots on Union Blvd. so that map will continue to be in the *Rambler*.

Unfortunately, the bad news. As many folks already know, we've had an avalanche fatality at the Snowbird ski resort prior to its opening. I encourage all folks who plan to do any backcountry travel this year, via skis, snowshoes, snowboards or any other means, to attend the avalanche seminar to be held on **Thursday night, the 19th of January, at 6:30 pm**. The Utah Avalanche Forecast Center will present a slide show and discussion on the hazards one finds in steep snowy terrain, as in our backyard. The following Sunday, at noon, we'll reconvene the meeting at the Butler Elementary parking lot to car-pool to a spot for avalanche beacon practice. Please attend both of these events, the life you save may be your own. (Heck, it may be my life you save!) If you can't make this seminar, try to attend one of the other seminars which are regularly going on around the valley. Call me if you need help finding one.

Also, for those folks leading tours, Trudy Healy has graciously volunteered her time to call leaders a day or two after the tour to get information about your skiing experience. Please be receptive and nice to her, the information she is asking for will help us plan future tours.

All folks participating in winter backcountry tours this year make note that there will be single European frequency (457 kHz) avalanche transceivers available on the market this year. These transceivers will not be compatible with the older U.S. frequency (2275 Hz) transceivers. Please read the article in this month's *Rambler* by Jim Frankenfield. I strongly recommend that winter backcountry travelers buy the new frequency transceivers. They are expensive, but ask yourself, how much is your life worth?

Finally, I must also express my gratitude and appreciation for this year's ski committee:

Phyllis Anderson	Sue Berg	Jane Eichten
Phil Fikken	Trudy Healy	Jim Piani
Tom Silberstorf	Tom Walsh	Ridge Williams

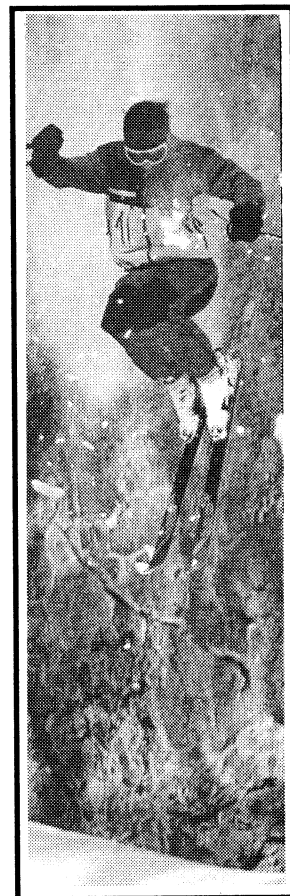
These folks have all done (or are gonna do) a fine job calling folks to lead tours, organize out-of-town trips, and all the various things that need to be done so you can go cruisin' on skis!

THE WASATCH MOUNTAIN CLUB

has coordinated with
**JAGGED EDGE
MOUNTAIN GEAR**
to offer you our
technical *ECO fleece
Mountain Vest,
Jacket & Pullover
with the special
75th Anniversary Logo
embroidered on the
breast at pro deal prices.

Visit the
**EVOLUTION SKI
JAGGED EDGE
MOUNTAIN GEAR**
location at
Trolley Square or call
363-7776 for details &
ordering information.

*fleece made from recycled soda bottles



*Jagged Edge Mountain Gear
will suit you whether you're
jammin' up wicked ice climbs,
cutting turns down vertical
snow terrain, or just looking
good on Main Street. Our
outerwear will keep you warm
and moving freely.*

FROM THE SKI COMMITTEE

by Cheryl Soshnik

Enclosed is an updated listing of ski tours and their ratings as subjectively assigned by the Ski Committee. If you feel the rating is too high or too low, please let us know. As we add new tours, we'll ask the leaders to figure out the elevation gain and mileage. Check out this list, and if you see a tour you'd like to lead, call the ski directors and we'll be happy to sign you up. All mileages are one way and would be doubled round trip, unless they are listed as a "traverse".

EL to NTD SKI TOUR RATINGS

<u>Location</u>	<u>Rating</u>	<u>Tour</u>	<u>Ascent Mi & Ft</u>	
Wasatch	EL/NTD-	Albion Basin Road	1.5	600
Wasatch	EL/NTD	Lower Silver Fork (from Silver Fork Lodge)	2.5	1280
Uintas	EL/NTD+	Beaver Creek Trail	5.0	600
Uintas	EL/NTD+	Weber Canyon Road (length)	8.0	600
Wasatch	NTD-	Willow Lake	1.5	800
Wasatch	NTD	Lake Mary	1.5	910
Wasatch	NTD	Greens Basin (from Spruces)	2.0	1000
Wasatch	NTD	Scotts Pass (Park at Solitude lot)	2.5	1500
Wasatch	NTD	Mill Creek Road to Elbow Fork	2.5	680
Wasatch	NTD	Mill Creek Road to Big Water	4.0	1500
Wasatch	NTD	Catherines Pass from Alta	2.5	1500
Uintas	NTD	Bench Creek		
Uintas	NTD	North Fork of the Provo River	4.0	1400
Uintas	NTD	Smith and Morehouse Canyon to Ledgefork GS	3.0	400
Heber	NTD	Telephone Hollow	2.5	
Heber	NTD	Doe Knoll	4.0	
Wasatch	NTD+	Catherine Lake	2.2	1200
Wasatch	NTD+	Lower White Pine	2.5	1400
Wasatch	NTD+	Dog Lake	3.0	1400
Wasatch	NTD+	Lower Mineral Fork	2.0	1000
Wasatch	NTD+	Days Fork to Second Meadow	3.0	1600
Uintas	NTD+	Yellow Pine Trail	3.5	2400
Uintas	NTD+/MOD	Norway Flats Road (length)	6.0	2530
Uintas	NTD+/MOD	Upper Setting Road (length)	6.0	2300
Uintas	NTD+/MOD	Shingle Creek	7.0	2460

MOD SKI TOUR RATINGS

<u>Location</u>	<u>Rating</u>	<u>Tour</u>	<u>Ascent Mi & Ft</u>	
Wasatch	MOD-	Lake Desolation	4.0	1900
Heber	MOD-	Telemark Hill		
Wasatch	MOD	Catherines Pass from Brighton	2.5	1500
Wasatch	MOD	Brighton to Twin Lakes Pass	2.0	1300
Wasatch	MOD	Grizzly Gulch to Twin Lakes Pass	2.0	1320
Wasatch	MOD	Big Water via Dog Lake	3.2	1400
Wasatch	MOD	Butler Fork to Overlook	1.5	1500
Wasatch	MOD	Powder Parks	3.5	2040
Wasatch	MOD	Little Water via Dog Lake	3.7	2100

(con't page 26)

MOD SKI TOUR RATINGS

<u>Location</u>	<u>Rating</u>	<u>Tour</u>	<u>Ascent Mi & Ft</u>	
Wasatch	MOD	Red Pine Lake	3.0	2000
Uintas	MOD	Red Pine Canyon to Mud Lake Flats	7.0	2235
Uintas	MOD	Strawberry Peak		
Uintas	MOD	Currant Creek		
Uintas	MOD	Soapstone to North of Iron Mountain	14.0	2240
Heber	MOD	Main Canyon (Murdock Hollow Loop)	5.0	
Heber	MOD	Foreman Trail	4.0	
Wasatch	MOD+	Greens Basin Peak	3.0	2380
Wasatch	MOD+	Bear Trap to Lookout	3.5	2400
Wasatch	MOD+	Alta-Brighton-Alta	4.5	2800
Wasatch	MOD+	Days Fork to Upper Cirque	4.0	2000
Wasatch	MOD+	White Pine Lake	4.5	2400
Wasatch	MOD+	Upper Red Pine Lake	3.5	2400
Wasatch	MOD+	Reynolds Peak	3.5	2100
Uintas	MOD+	Windy Ridge	3.8	3200
Uintas	MOD+	Hoyt Peak via Hoyt Canyon	7.0	3601
Heber	MOD+	Little South Fork/Willow Hollow	10.0	
Heber	MOD+	Main Canyon (Wallsburg to Strawberry)	15.0	
Heber	MOD+	Clyde Creek/Mud Creek	14.0	1000+

MSD SKI TOUR RATINGS

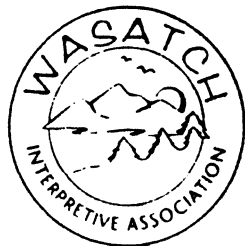
<u>Location</u>	<u>Rating</u>	<u>Tour</u>	<u>Ascent Mi & Ft</u>	
Wasatch	MSD-	Soldier Fork	4.0	1600
Wasatch	MSD-	Silver Fork from Brighton (Twin Lakes)	3.0	1460
Uintas	MSD-	Hoyt Peak from Swifts Canyon	7.0	3530
Wasatch	MSD	Tuscarora-Wolverine	4.0	2100
Wasatch	MSD	Maybird	3.5	2440
Wasatch	MSD	White Pine from Alta	5.4	2700
Wasatch	MSD	Wilson Fork	4.7	2600
Wasatch	MSD	Alexander Basin from Butler to Log Haven	3.6	3145
Wasatch	MSD	"Pink Pine"		
Wasatch	MSD	Pfeifferhorn	5.0	3700
Uintas	MSD	Kings Peak (length)	18.4	6800
Wasatch	MSD+	Gobblers Knob or Raymond via Butler Fork	3.5	3140
Wasatch	MSD+	Cardiff Fork	1.0	1360
Wasatch	MSD+	Mineral Fork from Alta	2.3	2180
Wasatch	MSD+	Days Fork from Alta	1.5	1890
Wasatch	MSD+	Mary Ellen	4.6	1820
Wasatch	MSD+	Major Evans	4.6	2700
Wasatch	MSD+	Lake Blanche from Alta	1.9	2060
Wasatch	MSD+	Superior/Monte Cristo from Alta	5.0	4810
Wasatch	MSD+	Bells Canyon Supertour Traverse	14.0	4780
Wasatch	MSD+	Mt. Nebo	6.0	5000
Wasatch	MSD+	Triple Traverse (Alta to Toll Canyon)		
Wasatch	MSD+	Lone Peak	7.0	5830
Stansbury	MSD+	Deseret Peak	4.0	3610
Uintas	MSD+	Weber River to Norway Flats Traverse	20.0	2800

Here's how to order

"Winning The Avalanche Game"

VHS videotape

Please fill out this form and mail to:



Wasatch Interpretive Association
P.O. Box 526246
Salt Lake City, UT 84152-6246

or fax your credit card order to the:
Utah Avalanche Forecast Center
(801) 524-4030

Your purchase helps fund avalanche safety information and services.

Ordered by: _____

Shipping Address: _____

City: _____ State: _____ Zip: _____

Daytime Phone: _____ Home Phone: _____

Payment enclosed:

_____ Money Order (Payable to Wasatch Interpretive Association)

_____ Check (Payable to Wasatch Interpretive Association) Orders paid by check may be delayed for clearance.

Charge my: _____ Visa _____ Mastercard

Account Number _____

Expiration Date: _____

Your Signature: (required) _____

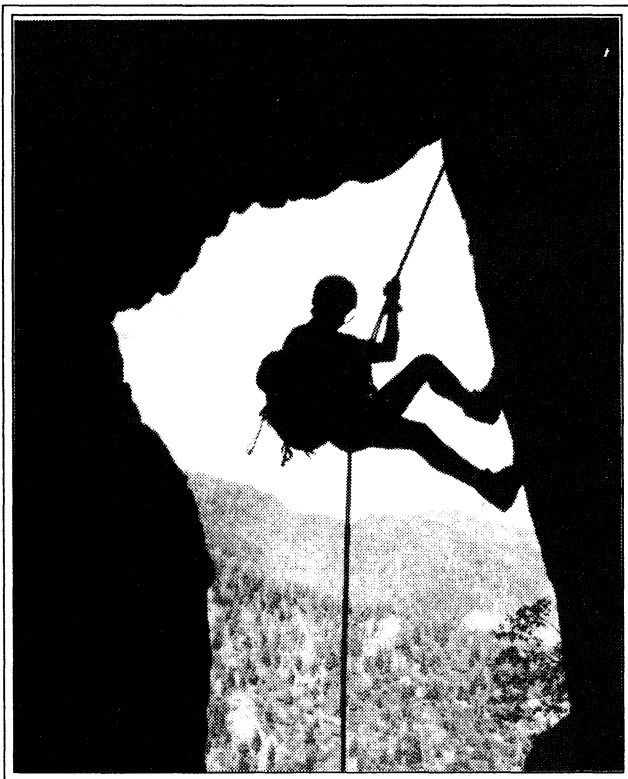
Note: Credit card order cannot be processed without signature.

Quantity _____ \$19.95 each in United States	Quantity _____ \$25.00 each in Canada
<div>Priority mail in U.S.</div> <div>Add Shipping and Handling charge: + \$5.00 per video .</div> <div>\$3.00 per additional video</div> <div>TOTAL \$ _____</div>	<div>First Class air mail Canada</div> <div>+ \$10.00 per video</div> <div>\$ 4.00 per additional video</div> <div>TOTAL \$ _____</div>

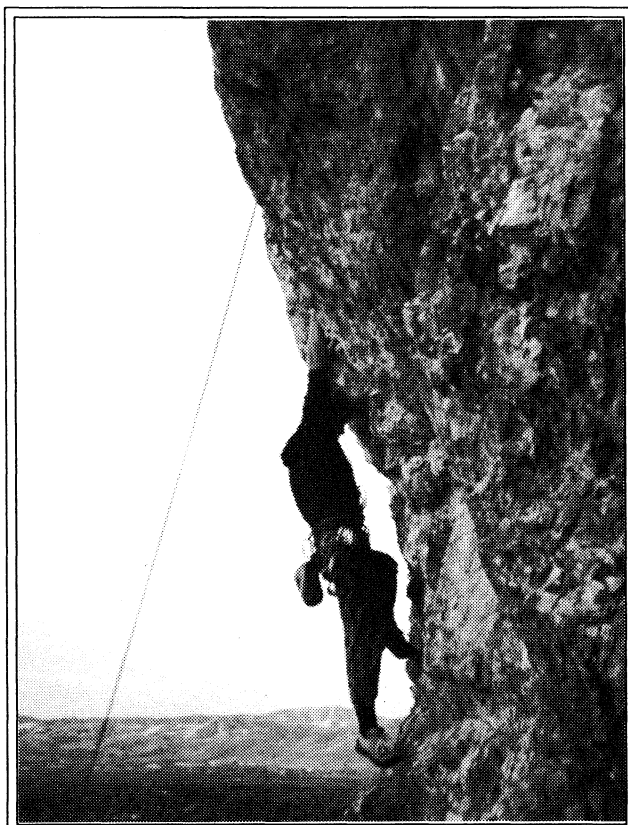
TRIP TALKS

GERMANIA PASS SKI TOUR

November 6



Peter Campbell rappelling off Mule Hollow Wall



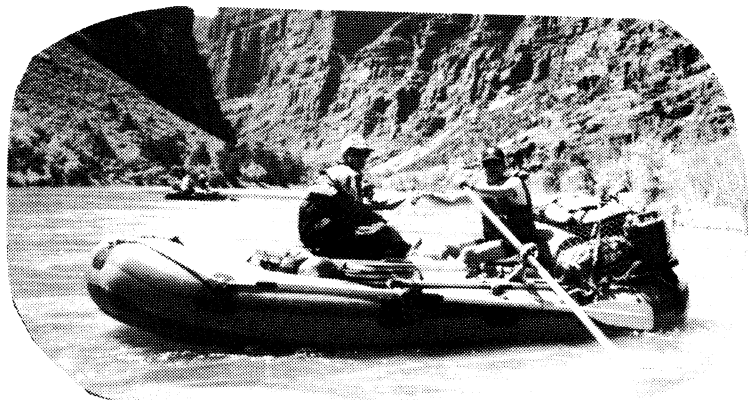
The Big Stretch—Doug Harris pulling at the overhang on Pete's Rock. Photos by Kyle Williams

For the first Club beacon and shovel ski tour of the year, seven of us met at the Little Cottonwood Park and Ride full of great expectations. We shuttled up to Albion Basin to begin the climb to Germania Pass. At the trailhead, we met and invited a former Club member, Dave George, to come along, making us a group of eight. Dave, who was on track gear, generously broke trail most of way. What a guy!

As we climbed, we felt the snow changing from soggy mashed potatoes to a delightful combination of windslab and winddrift. We watched clouds being driven over Devil's Castle by high winds. At 9500', the wind began to hammer us with gusts over 60 mph, literally blowing group members off their feet. To paraphrase the movie "Apocalypse Now", it became an ascent into the heart of darkness. We lurched and stumbled on towards the pass. I realized a summer of channel surfing, riding the couch, running down the boss, and jumping to conclusions did not constitute good pre-season training.

We crossed Germania Pass and basked in the warm glow of accomplishment for at least ten seconds, till the driving gale blew us down into cover. Here we deskin and tried to prepare for a descent without losing any gear to the howling winds. The skiing? What can be said? I would sooner shave my head with a cheese grater than face that foul combination of slab and drift again. It was a day for survival, not for demonstrating the finer points of free-heel technique. Our wise leader Milt, chose a well covered route without rocks being discovered or uncovered. Milt set a good pace as we descended Collins Gulch safely. Upon reaching the bottom in a wind-blown stupor, we agreed it had been a wonderful day of skiing, and the snow was really pretty good. Hank's conclusion was, he would now go home and hit himself in the head with a hammer because it would feel so good when he stopped.

Care to join us next time? Leader Milt Hollander, followed by Hank Winawer, Tim Sewell, Karen Perkins, Bill Frank, Lynn Christensen, and scribe, Edgar Webster.



***River Trip—Gates of Lodore
Photo by Phyllis Anderson***



FROM THE NOMINATIONS COMMITTEE

The following individuals have indicated their desire to run for Club directorships as indicated. The term of office is from March 1, 1995 to February 29, 1996.

Co-directors are marked by a single asterisk (*)
Incumbents are marked by a double asterisk (**)
Incumbents as co-directors marked by a triple asterisk (***)

President.....Nance Allen
Secretary.....Camille Pierce
Treasurer.....Kathy Hoenig *
Larry Schumer *
Membership.....Linda Kosky *
Leslie Whited *
Boating.....Janis Huber
Conservation.....Rich Osborne
Entertainment.....Sam Kievit ***
Craig McCarthy *
Lodge Director...Martin Clemans *
Ken Engstrom *
Lodge User Rep...Rich Osborne **
Gary Myers
Mountaineering...Kyle Williams **
Publications.....Jim Zinanti ***
Reda Herriott *
Ski Touring.....Cheryl Soshnik **
Bicycling.....Rick Kirkland
Information.....Ann Wechsler
Hiking.....Randy Long
Brad Yates *
Kip Yost *

Please contact one of the following committee members if you qualified and would like to run for any of the above positions. Thank you for your interest and support.

John Shavers (467-7558), Randi Gardner (487-7702), and Robert Turner (544-0605).

STAGE COACH INN

Oct. 22

by Jim Zinanti

Shortly before the October sun peaked over the majestic Wasatch, I and my trusty steed, (the one with two wheels and many spokes) set forth for what I hoped would be a fine day of bicycling. Despite my wearing 2 bike jerseys and long bike tights, I found it hard to choose a riding speed: riding fast is cold because of the wind chill; riding slow is cold because fewer calories are burned. In a burst of decisiveness I decided to ride somewhere in between.

As I arrived at the appointed meeting place for the days ride, I met leader Lade Heaton and other riders as they trickled in. To my surprise, 5 out of 15 riders are co-workers. Lade gave the word to start. We all started by looking around waiting for someone to begin riding into the *cold*. When a few of us, most notably Lade, got going, the others joined in. (Where are those fools going in this cold? Let's follow and find out.)

As we blasted down 2200 W. (we should have been on 2700 W. but who reads maps anyways), the sun began to warm us a bit. Switching to Redwood Rd. (that's Radwood, as in Radical dude!), we passed the ominous warning at the firing range for Camp Williams: Do NOT pick up metallic objects!

The sights of the Wasatch became spectacular as Lone Peak, Box Elder Peak, and Mt. Timpanogos dressed in their snow-coats became more visible, and back-lit by the morning sun. By the time we arrived at the first stop, clothing started to disappear. (Was I riding with a bunch of nudists?) By the time we arrived at the Fairfield cemetery, we were mostly dressed for summer time riding. Was this the same day I started this ride?

We arrived at our destinations, the Stage Coach Inn and Camp Floyd Cemetery, both closed for the season. (Don't they know it's still summer?) Beginning the return journey, we stopped at a co-store/burger joint for lunch. As the discussion on the outbound leg had included the topic of healthy cycling foods, I had to do my part with a beer and a bacon double cheeseburger. After lunch, we saddled up, returning at great speeds. See I told you that was good cycling food!

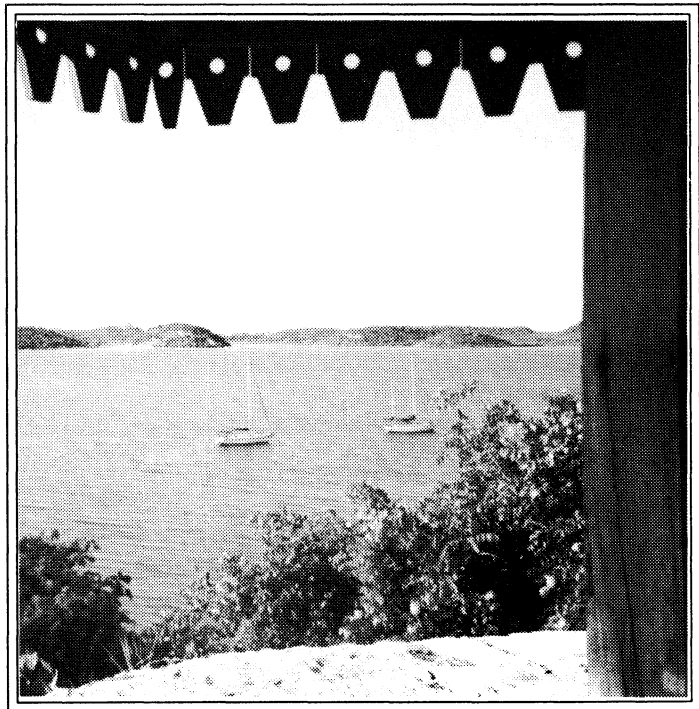
Riders: Lade Heaton, Barbara and Koorosh Komeyli, Gary Couillard, Kermit Earle, Doug Murray, Susan Snyder, Bill Franks, Kris Wagner, Charlie Hawker, Frank and Joyce Luddington, Chris Winter, Carrie Clark, and Jim Zinanti.

E. T. Moor at Harmony Hall, Brown Bay, Antigua

Nov. 5, 1994

Just when some of our crew were about to mutiny for a Big Mac after 12 days at sea, we sailed into Brown Bay; where, located atop a shady knoll surrounded by spreading fig trees, sits Harmony Hall. Yuck! Nothing but gourmet stuff. Where's the fat? Can't we even get a good crusty KFC? No way! Chicken Moutard, maybe; Mussels Meuneier, yes; stuffed crab back, for sure. But no good old greasy fast food fare.

Here at Harmony Hall we found ourselves reclining and embracing a cool tankard of rum punch or piña colada in hand. Below us, looking over the bay, the Atlantic Ocean swells and rolls sea-foaming waves just beyond the reef. Our yacht, the SS (for sailing ship) Roll Over, lays alone awaiting our return for some afternoon snorkeling along the Costeauish reef.



It's hard to think of food at a time like this, or write of it—no city streets, no crowds, no noise—only the tranquility, the ambiance of the sea and lush green hillside rising above it. An old stone windmill, the remains of a long-abandoned, pre-war (Revolutionary, that is), sugar mill, reborn as a lounge set the mood. A Garden of Eden surrounds the dining and bar area. Butterflies, hummingbirds, and other small colorful bird life thrive. Bright red, yellow, and white flowers bloom in profusion, while towering trees shade and waffle cooling breezes.

E. T. Moor at Harmony Hall (con't)

Perhaps the stuffed crab shells would mitigate the "Mac attack". Maybe not! But plump mussels, freshly plucked from their shells, and swimming in a sea of sour cream and sweet white wine could. The smoked salmon, though less exotic, provided a reasonable substitute. The signs of mutiny waned when the dessert options arrived. Brown Bay Bananas, the overwhelming favorite, began with a banana (peeled of course), wrapped in a flaky pastry crust. Aha! Good basic fat at last, garnished with a creamy caramel sauce on the side and two scoops of ice cream. Enough fat to appease the most recalcitrant. Dense French espresso grade coffee closed a memorable luncheon.

Ahhh, but this had a price. It ranged from 13 to 30 EC (That stands for Eastern Caribbean, not Empire Currency as I thought) with 10 EC for the rum punch and 6 EC for the mild Carib Lager. Since it all went on a credit card, you'll have to wait 'til I get my next AMEX statement to learn what it was in US \$.

Some of you may think Antigua a bit of a drive, or flight (or sail for that matter), for a *mussel* lunch. But if you're ever in the neighborhood, (like on one of Vince De Simone's sailing trips) and can't find the fast food outlet of choice, you might want to check Harmony Hall in Brown Bay, located in a sandy cove in Nonsuch Harbor, just windward of Fort Shirley and English Harbor.



Entertainment Directors

Look what the editor found in the lost folder

RASPBERRY DAYS AT BEAR LAKE

by Connie MacKay

Holly extended an open invitation to WMC members to join her at her family's cottage for a week end of fun during Raspberry Days at Bear Lake. About 19 members chose to take her up on it. Her father, Al and Grandma received us all with open arms.

Many of us came with our toys: a hobie cat, a sun fish, a ski boat with extra skis and life jackets, cards and games. Tents were pitched in the front yard, and bed rolls were strewn throughout the cottage and trailer extending across the lawn patio and deck.

Holly's family cottage sits on the lake, so naturally most of us spent our time swimming, boating and exploring. Frank put in his ski boat and spent a good deal of Saturday and Sunday pulling skiers. Dave and Connie had a great time cruising the shoreline in their sailboats with various members. Holly rented a wave runner Sunday afternoon and enjoyed dashing over the lake on it. Another highlight, more tranquil than the activity on the lake, was sitting in front of the cabin looking over the lake while chatting with Grandma and Club members. Resident hummingbirds buzzed around, undaunted by the numerous human invaders.

Saturday night we held a pot luck supper. Sunday morning, Bob treated everyone to waffles with fresh blackberry sauce—m m m m m m m m m scrumptious! Many thanks to Holly and her family for making it possible for us to have such a great weekend from: Nora, Toby, Alan, Frank, Connie M., Connie, Bob, Mike, Laurie, Bill, Dale, Felecia, Bob, Margaret, Paul, Gary, Ken, and Sam. Photo by Sam Kievit

FROM THE LODGE DIRECTORS

Rich Osborne and Bob Myers

In late October, District Ranger Michael Sieg sent us a decision memo (see below). This memo states that we will be granted a special use permit for the WMC Lodge that will expire in 2008 (a 13 year permit) if we comply with eight specific requirements. The most significant of these requirements are:

1. The WMC must develop an adequate water supply and culinary water system that meets the State of Utah Standards for a public drinking water system. A specific plan for developing this water system must be in place before the long term special-use permit is issued.

2. The WMC Lodge must be connected to the sewer.

The content of this decision wasn't unexpected and appears consistent with the adversarial stance that Ranger Sieg has exhibited during the past two years of negotiations.

The Lodge Directors are currently drafting a plan to address the requirements of Ranger Sieg's memo and will present the proposal at the December Board meeting. Alternative actions may also be explored by the Board. For questions or comments, please call Rich at 1-801-647-0205.

DECISION MEMO

USDA FOREST SERVICE UINTA AND WASATCH-CACHE NATIONAL FORESTS SALT LAKE RANGER DISTRICT SALT LAKE COUNTY, UTAH

PROPOSED ACTION AND DECISION TO BE IMPLEMENTED

The Wasatch Mountain Club (WMC) has applied for a Special-Use Permit to maintain the Wasatch Mountain Club Lodge on the National Forest. The lodge has been on National Forest System land since it was built in 1929. The Lodge is located just south of the Brighton Ski Area parking lot in Township 2 South, Range 3 East, SW 1/4 of Section 35. The Lodge is on the National Register of Historic Places. It has been authorized through a series of special-use permits, the last two were for 15 years each. The last permit expired on May 5, 1992. On December 10, 1993 the WMC submitted an application for another special-use permit to maintain the Lodge on the National Forest. The permit area consists of about .7 acre.

On May 23, 1994 I issued a temporary special-use permit for the Lodge and this permit expires on May 2, 1995.

The project has been reviewed by an interdisciplinary team and their input has been considered in making my decision. I have decided to issue another special-use permit to maintain the WMC Lodge on the National Forest. This permit will expire on December 31, 2008. The other private-type use permits in the Brighton area expire in 2008 and this will allow us to review all these permits at the same time. My decision is subject to the following:

1. The WMC must develop an adequate water supply and culinary water system that meets the State of Utah Standards for a public drinking water system. A specific plan for developing this water system must be in place before the long term special-use permit is issued.

2. The WMC Lodge must be connected to the sewer. All private residences, Forest Service facilities, and Forest Service permitted facilities (e.g., the Brighton Ski resort facilities, recreation residences, the Brighton Girls Camp, etc.) within 300 feet of the sewerline in Big Cottonwood must connect to the sewer.

3. The WMC must complete, or have a specific action plan to complete, all the action items resulting from the Forest Service's building inspection prior to the issuance of the long term special-use permit.

4. The WMC shall conduct an annual structural, health, fire and electrical self inspection of the Lodge and submit the results of this inspection to the Forest Service. The Forest Service shall supply forms to facilitate this inspection. Every three years we shall conduct our own inspection.

FROM THE LODGE DIRECTORS

5. Each year the WMC shall submit an updated Operating Plan to address the operations and maintenance of the Lodge. This plan shall identify steps to ensure that Lodge users do not park their vehicles in areas and at times that materially interfere with the operation of the Brighton Ski Resort, in particular in regards to snow removal during the winter.

6. The Lodge shall be made available to the public on a rental basis to the maximum extent practicable and shall not be based on WMC affiliation. Criteria for making the Lodge available shall be described in the annual operating plan.

7. The WMC shall maintain the insurance coverage specified in the special-use permit.

8. The WMC shall have the permit area appraised using an independent appraiser approved by the Forest Service. The permit fee shall be based on this updated appraisal.

SCOPING AND PUBLIC INVOLVEMENT

This proposal was sent out for public review on February 8, 1994. A total of 122 responses were received.

REASON FOR CATEGORICALLY EXCLUDING THE PROPOSED ACTION

The proposed action falls under Category Number 3, in Section 32.2 of the Forest Service Handbook 1909.15 - Environmental Policy and Procedures Handbook: Approval, modification, or continuation of minor special uses of National Forest System lands that require less than five contiguous acres of land.

This action does not involve any extraordinary circumstances, nor will it result in any significant effects upon the biological, physical, or human components of the environment; therefore, this action can be categorically excluded from documentation in an environmental assessment or environmental impact statement.

FINDINGS REQUIRED BY OTHER LAWS

I have reviewed the *Forest Plan*. The Forest Plan is silent on this proposal. Floodplains, wetlands, prime lands, threatened and endangered species, minerals, and heritage resource management implications would not be adversely affected.

Current Forest Service direction is to not issue permits for private-club type uses and to reserve property with high outdoor recreation resource values for future use by the general public. It directs us to always consider the public's need first when conflicts exist between currently permitted private-club use and the general public. It also directs us to phase out private-club use, as the opportunity arises, unless there will be no public needs for the land involved. However, the Lodge is on the National Register of Historic Places and we also have direction to protect and manage for historic values.

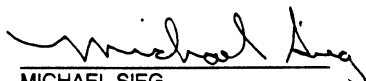
IMPLEMENTATION DATE

This decision pursuant to 36 CFR 215.8(a)(3) is not subject to appeal and may be implemented immediately.

CONTACT PERSON

For further information contact Larry Gillham or Michael Sieg at:

Salt Lake Ranger District
6944 South 3000 East
Salt Lake City, UT 84121
(801) 943-1794


MICHAEL SIEG
District Ranger

OCTOBER 21, 1994
DATE

PROFILE OF BERT BALZER

by Kip Yost

From our experiences on the trail, many of us know Bert as a somewhat mischievous older gentleman with an easy laugh and a cheerful demeanor. An unconventional hiker, Bert will occasionally enjoy a pipe upon reaching the summit after a long hike. He doesn't believe in stopping for a break along the way, and he usually reaches the hike's destination first.

Bert was once a game warden in the German Alps, where he developed a passionate love for all creatures great and small, as well as a special way with the animals that he meets in the wild. On one occasion on a hike through Ferguson Canyon, we witnessed what everyone agreed was the largest Mountain Goat we had ever seen looking down on us from the craggy south face of Storm Mountain. While the rest of us began scrambling slowly upwards, Bert took off like a rocket towards the goat's location. When I managed to catch up with him, Bert and The goat were standing only 15 feet apart, carrying on a most interesting conversation of snorts and grunts. When we less extraordinary humans showed up, however, the goat soon tired of our company and departed.

Bert was born in a quiet German hamlet named Nunkirchen about 25 miles from the French border. The year was 1937, and though the German countryside was peaceful then, the storm clouds that would soon shadow the world were brewing to the East in Hitler's Berlin.

At 4:55 pm, February the 22nd, 1945, the bombardment began that signaled the beginning of the infamous Battle of the Bulge, which engulfed and destroyed Bert's hometown. Bert still remembers the exact date and time today. As much of Germany's early-warning apparatus had already been destroyed by the Allies, the village had precious little time to prepare as 1,000 pound bombs rained down from American flying fortresses and artillery began coming in from Allied positions. Bert's mother and grandparents were among the many who perished in the ensuing fire-storm. Bert remembers the German soldiers, old men and teenagers by this time, setting off smoke bombs in a desperate attempt to escape Allied bullets as they retreated to-

wards the final showdown in Berlin. Before it was all over, the towns people who had survived the battle's devastation were left homeless, without provisions and without protection.

After the War ended, it was some time before the Allies could begin relief efforts to aid the orphaned and starving survivors of the many battles fought in the German countryside. Bert remembers going for days without food, forced to eat anything they could find and burning anything that would burn to stay warm. In those days, food that was given to them by the Allies was often rotted or infested due to having been shipped overseas by cargo ship. Bert also learned during this time that he had lost an older brother to the war as well. Such was childhood in post-war Germany.

Bert eventually emigrated to Canada, where he found work as an electronic assembler for 60 cents an hour. From there he set out to explore the United States, journeying through Alaska, Missouri, Colorado, and California before landing a job with American Airlines and settling in Utah in 1979. He has been hiking with the Wasatch Mountain Club ever since learning of its existence about three and half years ago. He has become a regular on Club hikes and something of an icon to Club regulars, the Forest Service and the media for his adoption of Bountiful Peak; whose summit flies the American flag Bert planted there. He also carved a the trail to the top.

Bert's childhood lessons in toughness and survival served him well this past summer as he faced a frightening battle with melanoma cancer. Bert was forced to miss out on a lot of hiking due to two separate surgeries, three biopsies and the constraints of therapy. It didn't appear to phase him too much, however, just three weeks after his last surgery he hiked Kings Peak, up and back, in one day!

Bert enjoys the company of his Wasatch Mountain Club friends, and if you've ever hiked with him, he probably has a picture of you somewhere in his many photo albums. If you're lucky, he may even invite you over to see them!

*Please join us
for the annual Wasatch Mountain Club*

Mid-Winter Banquet and Dance

Sat. January 21

*The Riverboat
4393 South Riverboat Road (815 West)*

\$19.00 per person

6:00 - 7:00 Social Hour

7:00 - 8:15 Buffet Dinner

**8:15 - 9:00 Presentation of Awards
Nominations to 1995/96
Governing Board**

**9:00 - 12:00 Dance to the music of
the Wind River Band**

**Cash Bar Available
Plenty of parking**

Reservations should be made by Jan. 14. Make checks payable to Wasatch Mountain Club. Send Check(s) and reservation form to M. Losee, 4239 South 1500 East, Salt Lake City, 84124. (277-3127).

RESERVATION FORM • MID-WINTER BANQUET AND DANCE
--

Your name _____ Number of individuals attending _____

Check(s) enclosed in the amount of _____

NOTICE

The *Rambler* cannot accept any ad that is inconsistent with the purposes of the WMC or offends the sensibilities of Club members. Send your ad (with a check enclosed if it is not used sports equipment) before the 13th of the month to: Sue DeVall, 11730 S. 700 W., Draper UT 84020.

CLASSIFIED ADS POLICY

Members may place classified ads for used sports equipment free of charge. Other classified ads up to 20 words require a \$5.00 donation to the WMC with \$.20 per word over 20. Words of 2 letters or less will not count as a word.

FOR SALE

Barrecafter Ski-rack: Attaches to rain gutter or luggage rack. Best Offer, call Hugh at 974-5729.

PHANTOM OF THE OPERA

San Francisco

Airfare/2 Night Hotel/Theatre Ticket
for \$298 per person dble cocupancy

Feb. 24 through 26

For information, call Jan Flinn or John Shavers
at:

Innovation World Travel, Inc. 296-2984

ECUADOREAN HAND KNITTED SWEATERS and CHUMPAS

Beautiful and 100% wool, excellent for hiking/outdoor activities. Sweaters: \$35, Chumpas: \$50. Call Shireen Burki at 585-4186.

Organic Income Opportunity

■ Earn a *solid* income you can retire on
■ within 1-2 years while working part-
■ time assisting with the distribution
■ of wild, organically grown products.
■ Stable, 12 year old company on the
■ cutting edge of the Green Wave. Call
■ John Hornat 801-942-8266 or 800-562-
■ 1486.

Utah Health Ways

Tranquil therapeutic massage, acupressure, aromatherapy, pain erasure, sports massage, tandem massage and more...Take time to recharge or give a gift to someone special. Convenient and serene location: 1104 E. 2310 S. SLC-Nancy Engle LMT/owner (298-6845)

Whale Watching: Baja Alifornia, Mexico

Dale Woodward plans to drive halfway down the Baja coast in January or February for some excellent whale watching. Last time we had over 100 sightings with 2 approaching the boat close enough to touch them. Anyone interested, Call Dale (467-2097).

WMC Board Meeting - 11/02/94

by Mike Budig

Attending: Knick Knickerbocker, Reda Herriott, Karin Caldwell, Dale Green, Sam Kievit, Nance Allen, Rich Osborne, Kyle Williams, Leslie Woods, Bob Myers, Jim Zinanti, Larene Miller, Jerry Hatch, Mary Ann Losee, Donn Seeley, Gene Jarvis, Michael Budge, Phyllis Anderson, John Shavers, Paula Quenemoen.

The Forest Service has issued a "memo" which proposes granting a 13 year lodge permit contingent on the Club's obtaining and developing a water system and looking up to the Brighton Sewer. The Board will seek legal advice on interpretation of the memo and future options.

Dale Green discussed revenue from Wasatch map sales. The maps have now made a profit and REI has finally started to sell the maps. Dale will decide how the Club should designate profits. Dale also reminded the Board that we need to start to consider how we will celebrate and advertise the Club's 75th anniversary in 1995.

Paula Quennenoca from Jagged Edge presented proposal to manufacture fleece jackets with WMC emblems. The jackets will be available to Club members at a discount.

John Shavers discussed the progress of the nominating committee. There are a number of openings to be filled. Club members interested in running for office should contact John Shavers.

Kyle Williams submitted proposed new liability release forms. These will be reviewed at a later time after each activity director submits comments about specific activities.

The Awards Banquet will have a live band and will be held January 21th at the Riverboat or possibly at the Airport Hilton. Cost will be about \$18-19 per member.

Please Complete Both Sides

Wasatch Mountain Club

New Member/Reinstatement of Previous Members Application

Do Not Use this Form for Regular Annual Membership Renewal

Please read carefully and fill out completely.

Name(s) _____
(First) (Last)

Address _____ City _____ State _____ Zip _____

Check phone number ☐ Residence: _____ Options: ☐ Do not print my name/phone in membership list.
to print in Rambler ☐ Do not put my name in lists given to Board
membership list ☐ Work: _____ approved conservation/wilderness organizations.
E-Mail: _____

I am applying for:

Check one:

____ New Membership
(Complete activity box)

____ Single

Birth date(s) _____

____ Couple

____ Reinstatement

____ Student (30 years or younger)

Activity Box: You must complete two Club activities (other than socials) to be considered for membership. The activity dates must be within one year of the application.

Qualifying Activity	Date	Signature of Recommending Leader
1. _____	_____	_____
2. _____	_____	_____

Do you wish to receive the Rambler (monthly WMC publication)? ____ Yes ____ No (Subscription price NOT deductible from dues)

I agree to abide by all the rules and regulations of the WMC. I am 18 years of age or older. I understand that outdoor activities involve risk, and that I am responsible for determining the suitability of my ability and equipment in advance of participating in any WMC activity. I release and discharge the WMC agents and representatives from all claims for property and personal injury sustained as a result of participation in WMC activities.

Applicant's signature(s) _____
(signature required)

I found out about the WMC from _____

Remit: \$30.00 for single membership (\$25.00 dues, plus \$5.00 application fee)
\$40.00 for couple membership (\$35.00 dues, plus \$5.00 application fee)
\$20.00 for student membership (\$15.00 dues, plus \$5.00 application fee)

Enclosed is \$ _____ for one year's dues & application fee. Checks/money orders only, payable to Wasatch Mountain Club.

Mail application and check to: Membership Director
Wasatch Mountain Club
888 South 200 East, Suite 207
Salt Lake City, UT 84111-4220

Leave Blank—For Office Use Only

Receipt/Check # _____ Amount Received \$ _____ Date Received _____ By _____

Board Approval Date _____

December 1994

37

Activity Survey—Wasatch Mountain Club

Would you like to lead?

All of the Club's activity leaders are volunteers. You can be a leader too—just check off the activities you want to lead, and we'll give you a call. Help your Club and have fun, too!

Hiking: ☐ easy day hike ☐ advanced day hike ☐ backpack
☐ moderate day hike ☐ car camp ☐ other (specify below)

Boating: ☐ trip leader ☐ instruction ☐ equipment ☐ sailing

Skiing: ☐ NTD tour ☐ MOD tour ☐ MSD tour ☐ out of town trip

Climbing: ☐ Wasatch climb ☐ out of town trip ☐ winter mountaineering

Bicycling: ☐ road bike tour ☐ mountain bike tour ☐ camping tour ☐ other

Other outings: ☐ snowshoe tour ☐ caving ☐ other

Would you like to support?

The Club also depends on volunteers for all the rest of its work. Some of this work is critical to the day-to-day functioning of the Club; some is important to our community; and some of it is just fun. You can let us know how you'll help by checking off activities below.

Conservation: ☐ air/water quality issues ☐ wilderness ☐ trail clearing
☐ trail head access ☐ telephone tree ☐ other

Socials: ☐ social host ☐ party assistance ☐ lodge host

Rambler: ☐ computer support ☐ word processing ☐ mailing ☐ advertising

Lodge: ☐ general lodge repair ☐ skilled lodge work

Information: ☐ public relations ☐ membership help ☐ recruiting ☐ instruction

Would you like to participate on an activities committee? Which one(s)?

List any special trips or activities you would like to lead:

What phone numbers can we use to reach you?

LATE COMING

ATTRACTION

Feb. 16-20, 1995

Death Valley Mtn. Bike Trip

Tired of the snow, cold, and the President Day Weekend mobs? Nostalgic about all the great rides (and crashes) you did last summer? Well, have we got a trip for you!!!! Average day temp, 74 degrees, snow/rain, 0 percent, sunshine, 100 percent, scenery 110 percent, hot springs, 105 percent—perfect for soaking those tired muscles. Ninety percent of the rides are downhill with a (promised) tail wind and NTD. Is this bikers heaven or what??? We will do day rides from a central camp location. A planning meeting takes place Sunday, Feb. 5 at 7:00 pm at 3886 Holiday Curve, Park City. Call Bob Wright (801-649-4194) for more info and to register.

Thinking of Remodeling?

Myers & Mahak CONSTRUCTION Inc.

Members of "The Wasatch Mountain Club"

485-9209

**FULL SERVICE REMODELING
DESIGN / BUILD
RESIDENTIAL & COMMERCIAL
KITCHENS & BATHROOMS**

Robert Myers 485-9209

Vali Mahak 582-7711

3336 South Pioneer Street • Salt Lake City

WASATCH MOUNTAIN CLUB

Membership applicants must participate in at least two Club outdoor or service activities, verified by the signatures of approval from the activity leaders. Yearly dues are \$25.00 single, \$35.00 couple. A \$5.00 initiation/reinstatement fee is charged.

1994-95

GOVERNING BOARD

President and Directors

President	Jerry Hatch	467-7186
Vice Pres./Hiking	Donn Seeley	273-7955
Secretary	Nance Allen	273-8010
Treasurer	Larene Miller	278-8758
Membership	Linda Kosky	943-1871
Boating	Gene Jarvis	944-8619
Conservation	John Veranth	278-5826
	Monty Young	255-8392
Entertainment	Mary Ann Losee	277-3127
	Sam Kievit	262-6698
Lodge	Rich Osborne	647-0205
	Bob Myers	485-9209
Lodge User Rep	Rich Osborne	647-0205
Mountaineering	Kyle Williams	567-9072
Publications	Jean Frances	582-0803
	Jim Zinanti	967-8578
Ski Touring	Brian Barkey	583-1205
	Cheryl Soshnik	649-9008
Bicycling	Frank Luddington	277-4564
Information (PR)	Michael Treshow	582-0803

Trustees

Phyllis Anderson	943-8500	Term Exp 95
Mike Budig	328-4512	Term Exp 96
Karin Caldwell	942-6065	Term Exp 97
Leslie Woods	484-2338	Term Exp 98
O'dell Peterson	355-7216	Emeritus
Dale Green	277-6417	Emeritus

COORDINATORS

Canoeing	<vacant>	
Trails Issues	Chris Biltoft	364-5729
Kayaking	Janis Huber	486-2345
	<vacant>	
Sailing	Vince Desimone	1-649-6805
Rafting	Janet Embry	322-4326
Boating Equipment	Gene Jarvis	944-8619
Boating Instruction	<vacant>	
Snowshoeing	Knick Knickerbocker	364-6521
Mountain Biking	Linda Palmer	484-3959
Volleyball	Ross Martin	364-4006
Adopt-A-Highway	Frank Atwood	299-8264
Commercial Ads	Reda Herriott	483-1410
Rambler Mailing	Christine Allred	261-8183

OFFICE HOURS

Jean Frances 363-7150 9 am-2 pm Mon and Wed

**AVALANCHE HOTLINE
USFS
364-1581**

December 1994

**WASATCH MOUNTAIN CLUB
888 SOUTH 200 EAST, SUITE 207
SALT LAKE CITY, UT 84111-4220**

Suite 207

**SECOND CLASS
POSTAGE PAID
SALT LAKE CITY, UT**

Dale Green
4230 Sovereign Way
SLC UT 84124