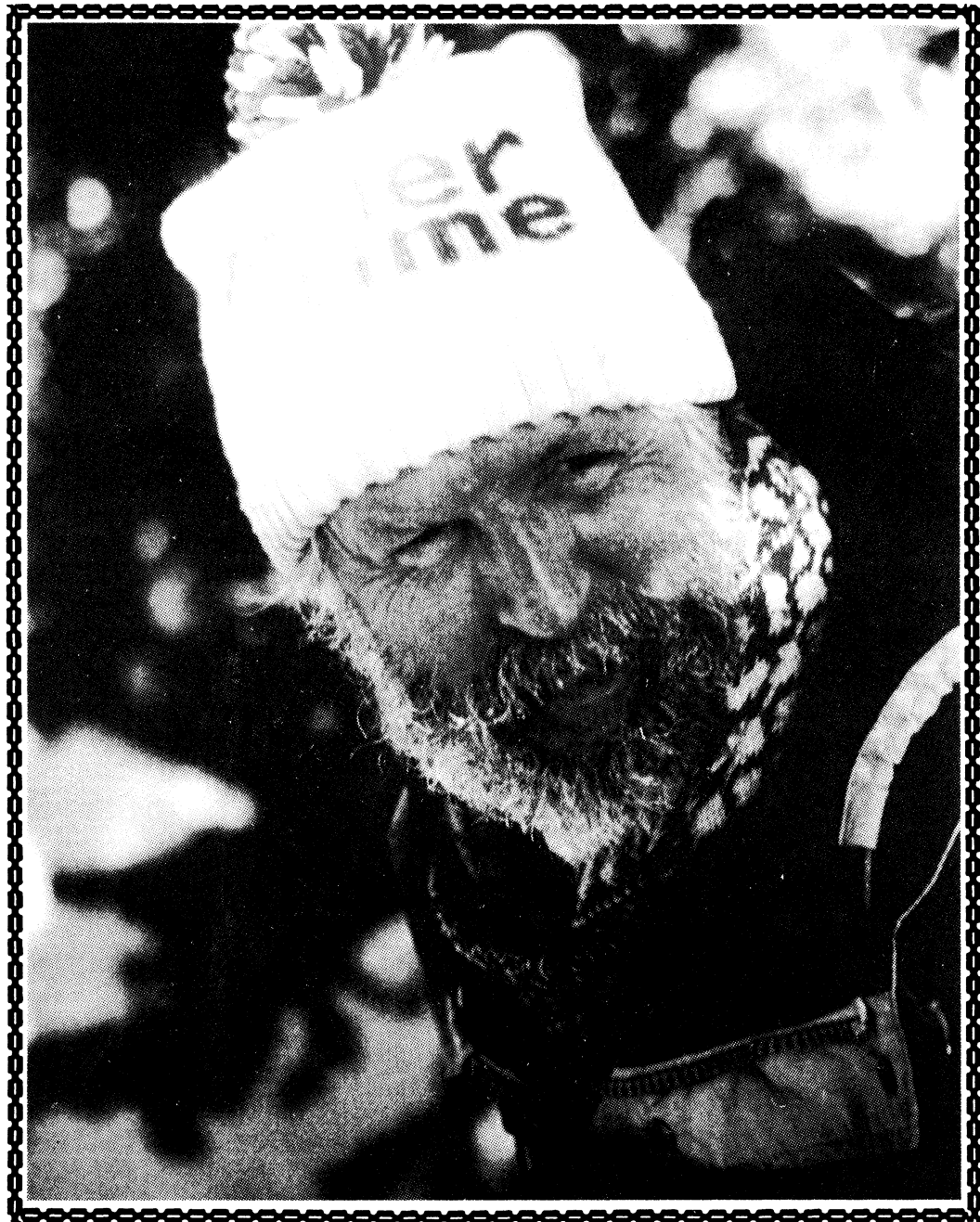


# *The Rambler*

Wasatch Mountain Club

JUNE 1994



THIS ISSUE IS DEDICATED TO THE MEMORY OF WICK MILLER

VOLUME 71, NUMBER 6

Printed on 100% Recycled Paper

**THE RAMBLER**  
**Managing Editors**  
**Jean Frances—Jim Zinanti**

**ADVERTISING:**.....Knick Knickerbocker  
**CLASSIFIED ADS:**.....Sue deVall  
**COVER LOGO:**.....Knick Knickerbocker  
**MAILING:**.....Christine Allred  
**PRODUCTION:**.....Jean Frances and  
.....Jim Zinanti

**WMC's new office assistant, Carla Western, will be in the office on Mondays and Wednesdays from 9:00 am to 2:00 pm. Office phone number is 363-7150.**

THE RAMBLER (USPS 053-410) is published monthly by the WASATCH MOUNTAIN CLUB, Inc., 888 South 200 East, Suite 207, Salt Lake City, UT 84111-4220. Telephone 363-7150. Subscription rates of \$12.00 per year are paid for by membership dues only. Second-class postage paid at Salt Lake City, UT.

**POSTMASTER:** Send address changes to THE RAMBLER, Membership Director, 888 South 200 East, Suite 207, Salt Lake City, UT 84111-4220. **CHANGE OF ADDRESS:** This publication is not forwarded by the Post Office. Change of Address should be submitted in writing to the Membership Director, 888 South 200 East, Suite 207, Salt Lake City, UT 84111-4220. All correspondence regarding the mailing of THE RAMBLER should be directed to the Membership Director at that address. Allow 45 days for address changes.

The right is reserved to edit all contributions and advertisements and to reject those that may harm the sensibilities of WMC members or defame the WMC.

Copyright 1993, Wasatch Mountain Club.

---

**PROSPECTIVE MEMBER  
INFORMATION**

THE RAMBLER, the official publication of the Wasatch Mountain Club, is published monthly by and for its members. Persons wishing to become members may receive THE RAMBLER for two months by writing the Membership Director, 888 South 200 East, Suite 207, Salt Lake City, UT 84111 and enclosing \$3. Checks are to be made payable to the Wasatch Mountain Club. There is a \$10 charge for returned checks.

**MEMBERSHIP & RAMBLER INFORMATION**

**MEMBERS:** If you have moved, please notify the WMC Membership Director, 888 South 200 East, Suite 207, Salt Lake City, UT 84111-4220 of your new address.

If you did not receive your RAMBLER, contact the Membership Director to make sure your address is in the Club computer correctly.

**IF YOU WANT TO SUBMIT AN ARTICLE:** Articles must be typed double spaced or on a floppy disk with a hard copy, also doubled spaced, and *received by 6:00 pm on the 15th of the month preceding publication*. Drop articles off at the WMC office (Mon-Fri—8 am to 5:30pm), in the **Blue Box** outside Suite 207, or mail it to WMC Rambler Editor, (office address in left hand column). Pick up disks/photos outside the WMC Office in the **Red Box**. Include your name and phone number on all submissions.

**IF YOU WANT TO SUBMIT A PHOTO:** We welcome photos of all kinds: black & white prints, color prints, and slides. Please include captions describing when and where the photo was taken, the names of the people in it, and the name of the photographer. **Photos will not be returned unless requested and accompanied by a self-addressed stamped envelope, otherwise they will be found in the Red Box outside the office door of the WMC.**

**WMC PURPOSE**

(Article II of the WMC Constitution)

The purpose shall be to promote the physical and spiritual well being of its members and others by outdoor activities: to unite the energy, interests and

---

**COVER PHOTO:**

WICK MILLER: Thanks to Joanne Miller



ANNOUNCES

# 40 YEARS *of* ADVENTURE

PRESENTED *by*  
**ROYAL ROBBINS**

*Join Royal Robbins, one of America's premier rock climbers and kayakers, as he presents his journey from high-school dropout to world class outdoor adventurer, teacher, businessman and environmentalist. Along with thrilling slides and fascinating discussion, Royal shows that success is a state of mind anyone can use to climb their own mountains.*



Royal Robbins



EST.  
1975

**SPECIAL VALUES THURSDAY AND FRIDAY ONLY!**  
**On Selected Climbing Equipment, Books and Royal Robbins Clothing.**

**WHEN:** **Thursday, June 23rd at 7:00 p.m.**  
Royal Robbins will be on hand to meet you, answer questions and autograph books.

**WHERE:**  **Kirkham's outdoor products** 3125 South State Street

**TICKETS:** **\$3.00** Limited Seating - Advance Purchase Recommended  
**100% OF PROCEEDS GO DIRECTLY TO BENEFIT**



**S'PLORE**

*for*

**MORE INFORMATION**

*please call:*

**486-4161**

# TWENTY FIVE YEARS AGO IN THE RAMBLER

## JUNE 1969

BY DALE GREEN, HISTORIAN

A brand new book was reviewed by Gale Dick. Desert Solitaire. A Season in the Wilderness by Edward Abbey became a much read reference by everyone who loves Utah's canyon country and a standard by which other books on the area are judged.

Trip reports include: A San Juan River Trip transported by the Wasatch Cannon Ball (Club's bus) with 35 participants; camping at Arches Nat'l Monument, also with Cannon Ball transportation; and a hike to Reynolds Peak.

.....

## FIFTY YEARS AGO IN THE WMC

(From Board of Directors' Minutes)  
June, 1944

Non-attendance at Club functions was apparently a major problem. After a long discussion, the Board resolved that Directors and Leaders contact club members, interested friends, and other non-members, either by telephone or otherwise and "determine if party contacted is intending to attend if not his or her reason for not attending." (*Italics mine.*)

After approving rental of the lodge to a Church Girls Organization, the Board decided not to rent out the lodge any more for the summer.

.....

**A Note from the Historian:** These 50-year-old minutes were taken and typed by Club Secretary Guy Anderson. On April 12, 1994, Guy passed away at age 93 of congestive heart failure. He is survived by wife Genevieve and nieces and nephews, including present club member, David Anderson.

.....

**ANSWER TO LAST MONTH'S TRIVIA QUIZ:** "What is the official name for the range of mountains east of Salt Lake City from which our Club derives its name?" (Hint - it is not the Wasatch Mountains.)

First, we need to establish who says what is official. In this country it is the US Board on Geographic Names (BGN). The BGN publishes gazetteers which list correct name usage. Most of you probably tried to find another name for Wasatch but that was unnecessary. The correct name is Wasatch **RANGE**. No - this is not a reason for us to change our name to Wasatch Range Club.

**TRIVIA QUIZ:** What does "Wasatch" mean?

- (a) High, snow-capped peaks
- (b) Rugged mountains
- (c) A low pass through the mountains

# EVENTS AT A GLANCE

## BIKING

<b>June</b>	<b>Road Biking</b>
4	Mtn Bike: South Causeway to Antelope Island
5	Road/Mtn Bike: East Canyon Turnaround
6	Road/Mtn Bike: Monday Night Ride
8	Road/Mtn Bike: Wednesday Night Ride Emigration Canyon
11	Road Bike: Wanship to Smith-Morehouse
11-12	Road Bike: Bike for Breath
12	Road Bike: Echo Canyon
13	Road/Mtn Bike: Monday Night Ride
15	Road/Mtn Bike: Wednesday Night Ride - Little Mtn to Big Mtn
18	Road/Mtn Bike: The Draper Ride
18	Road/Mtn Bike: Big Mtn Loop/Tour of Five Res.
19	Road Bike: Wanship Dam to Kamas
20	Road/Mtn Bike: Monday Night Ride
22	Road/Mtn Bike: Wednesday Night Ride - Little Mtn to Lamb's Canyon
25	Road Bike: Mtn Green to East Canyon
26	Road Bike: Wanship to Chalk Creek
27	Road/Mtn Bike: Monday Night Ride
29	Road/Mtn Bike: Wednesday Night Ride City Creek Canyon
<b>July</b>	<b>Road Biking</b>
1-4	Road Bike: Bike and Choo-Choo IV
3	Road Bike: East Canyon - Henefer Loop
4	Road/Mtn Bike: Copperton Park Pancake Breakfast
6	Road/Mtn Bike: Wednesday Night Ride - Millcreek Canyon
9	Road Bike: Lehi
10	Road Bike: Kamas to Butterfly Lake
11	Road/Mtn Bike: Monday Night Ride
13	Road/Mtn Bike: Wednesday Night Ride Big Cottonwood Canyon
<b>June</b>	<b>Mountain Biking</b>
4	Mtn Bike: South Causeway to Antelope Island
7	Mtn Bike: Tuesday Eve Ride, Pipeline Trail
11	Mtn Bike: Mueller Park to No. Canyon Loop
14	Mtn Bike: Tuesday Evening Ride (Park City)
19	Mtn Bike: Pipeline Trail to Overlook
21	Mtn Bike: Tuesday Evening Ride (Salt Lake)
24-26	Mtn Bike: Book Cliffs - Tavaputs Plateau 4 Wheel Car Camp
28	Mtn Bike: Tuesday Evening Ride (Park City)
<b>July</b>	<b>Mountain Biking</b>
2	Mtn Bike: Telemark Park Ride #2: Game Trail, Spin Cycle
5	Mtn Bike: Tuesday Evening Ride (Salt Lake)

## HIKING

<b>June</b>	
1	Wednesday Evening Hike
2	Thursday Evening Hike
4-5	Nine Mile Canyon Car Camp
4	Little Mountain and Big Mountain Family Hike
4	Circle All Peak Hike
4	Up Butler, Down Mill Creek Hike
4	Grandeur Peak Hike
5	Newcomers Hike
5	Church Fork Dog Hike
5	Mount Aire From the Gate Hike
5	Church Fork Peak via Burch Hollow Hike
5	Pittsburg Lake From Albion Basin Hike
8	Wednesday Evening Hike
9	Thursday Evening Hike
11-12	Buckskin Gulch Backpack
11	Mount Evergreen
11	Peak-to-Peak Sprint Hike
11	Salt Lake Overlook
12	Desolation Lake
12	Murdoch Peak
12	Thaynes To Neffs Canyons
12	Van Cott Peak Hike
15	Wednesday Evening Hike
16	Thursday Evening Hike
16-20	Elk Ridge Exploratory Car Camp
18	Desolation Lake/Dog Lake Loop
18	Devils Castle
18	Greens Basin
18	Neff's Peak
18	Wildcat Ridge
18	Newcomers Hike and Barbecue
18-19	Car Camp at Dinosaur Nat. Mon.
19	Lake Blanche
19	Lone Peak via Jacobs
19	Mount Aire via Burch Hollow
19	Stansbury Mountains
22	Wednesday Evening Hike
23	Thursday Evening Hike
24-25	Backpack for Beginners
25	Cardiff Pass
25	Red Pine Lake
25	Thaynes Peak
25-26	Black Box Exploratory Car Camp
26	Desolation Lake
26	Desolation Trail
26	Mill Canyon Peak
26	Mueller Park to White Rocks
29	Wednesday Evening Hike
30	Thursday Evening Hike

## EVENTS AT A GLANCE

### HIKING

#### July

- 2 Greens Basin
- 2 Maybird Lakes
- 2 Mount Raymond From Butler Fork
- 2 Twin Peaks via Broads Fork
- 2-4 Car Camp at Great Basin National Park
- 2-4 Grand Teton Backpack
- 3 Albion Basin Family Hike
- 3 American Fork Twins via American Fork Cyn
- 3 Kessler Peak via Argenta Trail
- 4 Broads Fork to the Bridge
- 4 Monte Cristo - Superior Lake Blanche
- 6 Wednesday Evening Hike
- 7 Thursday Evening Hike
- 9-10 Backpack: High Uintas
- 16-17 Backpack: High Uintas
- 17 Boeing 247 Crash Site

### BOATING

#### June

- 2-6 Desolation Canyon
- 6 Work Party
- 10-14 San Juan
- 11-12 Payette Rivers
- 17-18 Alpine Canyon
- 27-Jul 1 Desolation Canyon

### CLIMBING

#### June

- 2 Thu Evening Climb/Storm Mt.
- 9 Thu Evening Climb/Storm Mt.
- 11 Rock Climbing Class
- 11-12 Climbing: Grand Tetons
- 16 Thu Evening Climb/Gate Buttrass
- 17-19 Climbing: City of Rocks, ID
- 23 Thu Evening Climb/Gate Buttrass
- 30 Thu Evening Climb/Gate Buttrass

### SOCIALS

#### June

- 7 Planning Meeting for Entertainment
- 8 Wed Night at the Movies
- 10 June Birthday Party
- 18 Newcomer's Hike and Barbecue
- 22 Wed Night at the Movies
- 25 Contra Dance and Potluck Dinner

#### July

- 9 Coffeehouse at the Lodge
- 16 Barbecue, Volleyball, and Croquet
- 30 Chili Cook-off and Dance

## Sky Calendar

### MOON

New Moon	Jun 90	Jul 08	Aug 07
First Quarter	Jun 16	Jul 15	Aug 13
Full Moon	Jun 23	Jul 22	Aug 30
Last Quarter	Jun 30	Jul 30	Aug 28

### MOONRISE 40 No. Latitude, 112 W Longitude, flat horizon

Saturday	Mtn. Daylight Time
Jun 04	3:00 am
Jun 11	8:00 am
Jun 18	3:30 pm
Jun 25	10:30 pm
Jul 02	1:30 am
Jul 09	6:45 am
Jul 16	2:30 pm
Jul 23	9:00 pm
Jul 30	midnight
Aug 06	5:30 am

### SOURCE:

At dusk, the bright planet in the southeast is JUPITER, VENUS follows the sun down in the west. Yellowish SATURN rises near midnight and is high in the south at dawn.

### SPECIAL EVENTS

June	
1	Board Meeting
July	
6	Board Meeting
9-10	Lodge Work Party
10	Trail Clearing Day

### SUMMER VOLLEYBALL

Participation Limited to 42

DATES:	Mondays at Fairmont Park
TIME:	6:00 pm
FEE:	CHECK WITH ROSS
CALL:	Ross Martin 364-4006

## PUBLIC SERVICE ANNOUNCEMENTS

.....

The *Rambler* staff, on behalf of all the Club members wishes to extend their heartfelt sympathy to Joanne Miller, her family, and Wick Miller's family. Their pain is in many different ways felt by all of us. Indeed, for some, it is an awakening to the delicate balance which life is held and that the things we hold most dear are not only not forever, but in an instant can be taken away from us. To Joanne and Wick's family, many of us in the Club are available for any support or need that you may have for us. Please allow us to be of help, even in a small way. This month we dedicate the *Rambler* in memory on one of our choices friends, Wick Miller.

.....

### TIMPANOGOS CAVE NATIONAL MONUMENT CELEBRATES NATIONAL PARK WEEK

#### First National Park Week, May 22-28

This week is a chance to pay tribute to the priceless natural and historical resources preserved across the country by the National Park Service. In celebration Timpanogos Cave National Monument will present an unforgettable presentation to salute National Park Service cave areas Monday, May 23, Cave Specialist Rod Horrocks presents a spectacular program on the exploration and mapping of one of the world's most beautiful caves: Lechuguilla Cave in Carlsbad Caverns National Park, New Mexico. We'll highlight the preservation and research efforts at Timpanogos Cave and provide you with information on how **YOU** can get involved. Program 7:00 pm to 8:30 pm, Lehi Library, 120 North Center St., Lehi, UT. For more information, please call (801)756-5239.

### FROM THE ENTERTAINMENT COMMITTEE

**WANTED:** Clubhouses, dance halls, barns,.....space for parties. The entertainment committee has some great ideas for parties and other fun get-togethers, but we need places to hold these events. If you have a large house, a clubhouse, or know of a place that will hold 50+ of your closest friends, please contact MaryAnn (269-9938) or Sam (277-1789).

### WMC LODGE AVAILABLE FOR SPRING AND SUMMER BOOKINGS

Plan now to hold your family reunion, office party or workshop, wedding, or other special occasion at the WMC LODGE. Now accepting reservations for spring and summer use. User rates are as follows:

24 hour rate, noon to noon: \$225  
Half day rate, Mon-Thurs: \$150  
(8am-5pm or 6pm-midnite)

We often have to turn away people because they didn't reserve early enough, so make those plans now! Call Rich Osborne (1-647-0205) for more information.

\*\*\*\*\*  
\*\*\*\*\*

# CLUB ACTIVITIES

Only activities approved by the appropriate WMC Director can be listed in the Club Activities section of the *Rambler*. Send your proposed activity for approval to the hiking, boating, skiing, etc., director for inclusion in their activity schedule. Those activities sent directly to the *Rambler*, without approval, will not be published

\*\*\*\*\*

## THURSDAY AND WEDNESDAY PARKING INFORMATION: SEE LAST PAGE OF CLUB ACTIVITIES

.....

### ATTENTION HIKERS

We need your help!! We are looking for volunteers to assist us with a summer hiking program for elementary school "at risk youth". We need people who will commit to helping us transport these kids to hiking destinations and spend quality time with them. Most of these kids are native Utahns but have never gone out of the city and have no idea what beauty surrounds them. For more information please call Tammie Atkin at 943-7851 or 468-5443.

.....

Jun 1 Wed

**BOARD MEETING:** Attend the WMC board meeting at 7:30 pm at the Club office 888 S., 200 E. A pre-board meeting will be at the Trang restaurant, 818 S. Main St., at 6:30 pm.

Jun 1 Wed

**WEDNESDAY EVENING HIKE** Mill Creek Canyon. See Wednesday Evening Hike Information for details on page 17. Join in for pizza after hike.

Jun 2 Thu

**THURSDAY EVENING CLIMBING—STORM MOUNTAIN** Join us at Storm Mountain Picnic ground in Big Cottonwood Canyon for fun climbing. Be at the big rock in the parking lot by 6:00 pm to be included in a rope team. Call Kyle Williams (567-9072) if you have questions.

Jun 2 Thu

**THURSDAY EVENING HIKE** Foothills hike: meet at the corner of Colorow Way and Tabby Lane in Research Park (NE of the Western Institute). See Thursday Evening Hike Information for details on page 17.

Jun 2-6 Thu-Mon

**BOATING: DESOLATION CANYON** (Class III) Joe Martinelli (649-3364) has a permit that he can't use and would like to turn into the Club if someone is interested. Call Joe and make arrangements.

Jun 4 Sat

**FAMILY HIKE: BIG MOUNTAIN AND LITTLE MOUNTAIN HISTORICAL FAMILY HIKES** More history than hiking. Meet at Parley's Canyon KMart at Foothill Blvd. and 2100 S. at 8:00 am drive 60 miles on I-80 to Echo Canyon Welcome Center. Will try to spot Mormon War Fortifications. Then we proceed 25 miles on I-84 (to Henefer) and Utah Highway 65, reading Donner and Mormon Trail Historical Plaques. Just south of Henefer, we'll try to find the wheel ruts cut in the sandstone. We will go past East Canyon Reservoir to Mormon Flats (base of Big Mountain). We may spot cars at top and bottom so hikers will have the option of up-only, down-only, and round-trip. (My wife will be an up-only hiker.) Lunch will be on the trail about noonish. After the Big Mountain Summit, we'll drive past little Dell and "hike" Little Mountain. Then we go down Emigration Canyon to Pioneer Monument State Park and view the panorama of where we've been. Estimated time of return to KMart is 5:00 pm-ish. Call Frank Atwood (299-8264) for details.

Jun 4 Sat

**HIKE: CIRCLE ALL PEAK** Get a great view of Big Cottonwood Canyon with Barbara Jacobsen (943-3715). Meet at 9 am at Skyline High. Limit: 13. Rating: 3.4.

Jun 4 Sat

**HIKE: GRANDEUR PEAK** Randy Long (943-0244) says that adolescent children (with their parents) are permitted on this hike. Meet at 9 am at Skyline High. Rating: 5.8.



Jun 4 Sat

**HIKE: UP BUTLER, DOWN MILL CREEK** Club President Jerry Hatch (467-7186) will saunter past Reynolds Peak and Dog Lake on this late spring hike. Meet at 9 am at Skyline High. Rating is estimated to be about 5.

Jun 4 Sat

**MOUNTAIN BIKE: SOUTH CAUSEWAY TO ANTELOPE ISLAND (NTD+)** The Salt Lake County Bicycle Advisory Committee is hosting this family ride to Antelope Island via the almost unknown south causeway. Meet at Saltair at 3:00 pm. Entertainment will follow at Saltair Pavilion. Call Peter Netka (359-0179) for details.

Jun 4-5 Sat-Sun

**CAR CAMP: NINE MILE CANYON** Explore ancient civilizations with Virginia Timmons (571-2548) in this beautiful canyon. We'll look for petroglyphs and pictographs from Fremont and Ute Indian tribes, and do some gentle hikes to ancient pit houses, and just have good fun. We'll also visit the prehistoric museum in Price, a first rate exhibit. Children age 10 and above, with their parents, are permitted. Call Virginia to register and get more details.

Jun 5 Sun

**DOG HIKE: CHURCH FORK** Brian Barkey (583-1205) will lead a leisurely hike for people and dogs in Mill Creek. Meet at 9 am at Skyline High. Unrated but easy.

Jun 5 Sun

**HIKE: CHURCH FORK PEAK VIA BURCH HOLLOW** Mike Eisenberg (572-2676) will go to Church on Sunday and pray for guidance. This hike ascends from Burch Hollow, runs the ridge to Church Fork Peak, then descends Church Fork to the pipeline, which it follows back to Burch Hollow (got that?). Meet at 9 am at Skyline High. Rating: 5.9.

Jun 5 Sun

**ROAD/MOUNTAIN BIKE: EAST CANYON TURN-AROUND (MOD)** Join us for a climb up Emigration Canyon past Little Mtn and on to Big Mtn summit where we'll snack and rest a bit before coasting back down. A 33 miler with 3000'+ of climb. Lots of exercise on a short ride! Meet Dave Anderson (532-0947) at 9:00 am at Sunnyside Park (1730 E Sunnyside Ave).

Jun 5 Sun

**HIKE: PITTSBURG LAKE FROM ALBION BASIN** Kip Yost (487-3952) says that this is a steep off-trail hike with some scrambling, crossing the ridge from Little Cottonwood into upper American Fork. Call Kip to register and get more details. Rating: estimated at about 9.

Jun 5 Sun

**NEWCOMERS HIKE:** Membership Director Linda Kosky (943-1871) and/or Felecia Kulsic will lead an easy hike for newcomers (prospective members) to the Club. Meet at 9 am at Skyline High.

Jun 5 Sun

**HIKE: MOUNT AIRE FROM THE GATE** Betty Cluff (486-8549) says it's beautiful on top of this Mill Creek peak. Meet at 9 am at Skyline High. Rating: 5.6.

Jun 6 Mon

**BOATING: WORK PARTY** For those going on the San Juan trip June 10-14, meet at the boating shed, 4317 S., 300 W. #8, at 6:30 pm.

Jun 6 Mon

**ROAD/MTN BIKE: MONDAY NIGHT RIDE (NTD)** If you haven't previously biked with the WMC, this is a good ride to start with. It will be a social ride at a relaxed pace and will start at West Valley City Park, 4566 W 3500 S, at 6:00 pm. No severe hills or excessive miles. Bill Walton will lead these rides in June. Call him (969-8948) to get details on this particular ride.

Jun 7 Tue

**MOUNTAIN BIKE: PIPELINE TRAIL TO BURCH HOLLOW (NTD+)** This is a scenic trail with some exposure (side of trail drops off at some points). We'll ride 2 miles and 500' up Millcreek Cyn. (road should still be closed) from the Burch Hollow trailhead to Elbow Fork, then down the Pipeline trail back to Birch Hollow. Meet at 6 pm at Skyline High. Call Linda Palmer (484-3959) for details.

Jun 7 Tue

**PLANNING MEETING: ENTERTAINMENT WANTED** fun-loving, energetic people to help plan and/or host WMC socials—concerts in the park, Buzz baseball, etc. Come with your ideas to a strategy session at WoodzxHollow Condominiums 2434 Elizabeth #5 (turn west at the corner of Warnock (2490 S) and Highland; cross Elizabeth and head west into the parking lot; condos are on the right). Planning starts at 7:00 pm, light refreshments will start at 6:30 pm. Call Sam (277-1789), Terry (467-8027), or Mary Ann (278-4587) if you have any questions. See you there!

Jun 8 Wed

**ROAD/MTN BIKE: WEDNESDAY NIGHT RIDE (NTD-MOD)** Wednesday night rides are designed as social and training rides. Tonight's ride will be up Emigration Canyon and the pace will vary with the participants. Some riders will charge out at full speed; others will amble along at a slower pace. Both types are welcome. Those riders who haven't reached the turn around point when the faster riders are coming back can turn at that time. Meet Annemarie Ferrari (466-1972) at the parking lot 1/4 mile east of Hogle Zoo at 6:30 pm. Note: this is a different meeting place than this ride has previously used.

Jun 8 Wed

**WEDNESDAY EVENING HIKE:** See page 17 for details for Big Cottonwood Canyon Hike.

Jun 8 Wed

**SOCIAL: WEDNESDAY NIGHT AT THE MOVIES** Join WMC and Sierra Singles for Wednesday Night at the Movies. Meet at the Sugarhouse San Francisco Sourdough Pizza Co. for pizza at 6 pm or show up before 6:50 before walking over to the Cinemark Movies Ten to catch a flick. Call Ken (363-4009) if you have any questions.

Jun 9 Thu

**THURSDAY EVENING CLIMBING—STORM MOUNTAIN** Join us at Storm Mountain Picnic ground in Big Cottonwood Canyon for fun climbing. Be at the big rock in the parking lot by 6:00 pm to be included in a rope team. Call Kyle Williams (567-9072) if you have questions.

Jun 9 Thu

**THURSDAY EVENING HIKE:** Mill Creek Canyon. See page 17 for details.

Jun 10 Fri

**SOCIAL: JUNE BIRTHDAY PARTY** Come help Lade Heaton, Beth Hermann, and ??? celebrate their June birthdays. Pizza starts at 5:00 pm.! Call Lade (277-8832 or 1-649-4612) or Beth (1-645-8890) for details.

Jun 10-14 Fri-Tue

**BOATING: SAN JUAN** (Class II-) Ursula Jochmann (484-9820) is coordinating this family trip. She needs a river trip leader to assist her on the river. Call Ursula for the details.

Jun 11 Sat

**HIKE: MOUNT EVERGREEN** An easy hike for novices, beginners, and laid back social hikers. Join Cherry Wong (272-4353) for a gab and hike. Meet at Skyline High School, east parking lot at 9:00 am. Rating 2.8

Jun 11 Sat

**HIKE: PEAK-TO-PEAK SPRINT** Peter Hansen (583-8249) leads this traditional super hike up the Big Cottonwood Twin Peaks which culminates in a race between the summits. You must have an ice ax and know how to use it, and be prepared for steep snow fields and exposed scrambling. Call Peter to register. Limit: 13. Rating: if you have to ask...

Jun 11 Sat

**HIKE: SALT LAKE OVERLOOK** Join Uli Hegewald (582-3502) for a stroll to the Salt Lake overlook in Millcreek canyon. Meet at the northeast lot at the Olympus Hills mall (3550 E. 3900 S.) at 9:00 am. This hike is rated 3.6.

Jun 11 Sat

**MOUNTAIN BIKE: MUELLER PARK TO NO. CANYON LOOP (MOD)** Great ride with a combination of road and singletrack. Total mileage is 14, with 1700' of elevation gain. Meet at 9 am at the Bountiful KMart, 2600 S. Main in Bountiful. Helmets required. For more info, call Dallas Chopping (292-6298).

Jun 11 Sat

**ROAD BIKE: WANSHIP TO SMITH-MOREHOUSE (NTD+)** This 41 mile ride has 1300' of elevation gain. Chris Baierschmidt (272-7952) will meet car-poolers at KMart on Parley's Way at 9:00 am. The ride will start at 10:00 am at Wanship Dam (right turn off I-80 at Wanship, up the hill). Chris plans to picnic at SM and then munch out at Spring Chicken Inn after the ride.

Jun 11 Sat

**ROCK CLIMBING CLASS** Learn the basics of how to climb safely. Any snug-fitting rubber soled footwear can be worn. Participants will need to bring 25 ft of 1" webbing to tie into a body harness. Call Kyle Williams (567-9072) to register.

Jun 11-12 Sat-Sun

**BACKPACK: BUCKSKIN GULCH** This famous tributary of the Paria River in southern most Utah has some cold water to wade through and one roped descent over a chockstone, but it's also one of the absolute best slot canyon hikes anywhere: long and narrow, twisting and fun. Call leader Douglas Green (295-2640) to register and get details.

Jun 11-12 Sat-Sun

**BOATING: PAYETTE RIVERS** (Class II+-IV) Allan Gavere (486-1476) will lead this perennial favorite. Lots of advanced boating is available, but there is enough advanced beginner to intermediate water to keep everyone happy. Call Allen to discuss the trip.

Jun 11-12

**CLIMBING: GRAND TETONS** Jim Frankenfield will be leading a mountaineering trip to the Tetons, precise destination to be decided. Call Kyle Williams (567-9072) if interested. He will relay information to Jim who lives in Oregon.

Jun 11-12 Sat-Sun

**ROAD BIKE: BIKE FOR BREATH** The American Lung Assn. of UT is sponsoring this overnigher of 85 to 123 miles over two days. Starts at Logan Regional Hospital, spends the night at Crystal Hot Springs, and returns to Logan on Sunday, sag wagon support. Registration: \$25 plus a fund raising minimum. For more information contact the ALA (484-4456).

Jun 12 Sun

**HIKE: DESOLATION LAKE** Give your hiking boots a good work out on this moderate hike. This is a great time to see Utah's early wild flowers. Meet Carol Anderson (485-0877) at 9:30 am at Skyline High School. Rating 5.4

Jun 12 Sun

**HIKE: MURDOCK PEAK** Beers afterwards? We're getting into big time hiking here...WMC animals, join J. Dewell (1-645-5317) at the store at Parley's summit, exit 140 from I-80 at 9:00 am for this hike. Rating 7.4 (all right it's not THAT tough)

Jun 12 Sun

**HIKE: THAYNES TO NEFFS CANYONS** Intrepid hikers join Jim Bailey (261-5609) for a canyon to canyon hike. There is a 14 person limit on this 6.5 rated hike. Meet at 9:00 am at Skyline High School.

Jun 12 Sun

**HIKE: VAN COTT PEAK** Richard Zeamer (355-3751) plans an afternoon hike to this little summit above the University with a stupendous view of Salt Lake. Meet at 2 pm at the U of U Medical Center northeast (upper-most) lot. Rating: 2.8.

Jun 12 Sun

**ROAD BIKE: ECHO CANYON (MOD)** This 54 mile ride showcases the old highway from Echo Junction toward WY through Echo Canyon. This is the route used by the Mormons who settled Salt Lake valley. It is also the route taken by the Donner party. We'll ride the length and return to the Kozy Cafe for lunch. Elevation gain is only 500' but it will be at a moderate pace. Meet Elliott Mott (968-7357) at the KMart on Parley's Way at 9:00 am to carpool, or at Wanship Dam at 10:00 am.

Jun 13 Mon

**ROAD/MTN BIKE: MONDAY NIGHT RIDE (NTD)** A social ride at a relaxed pace, Bill Walton (969-8948) will meet riders at West Valley City Park (4566 W 3500 S) at 6:00 pm. Call him for details on tonight's ride.

Jun 14 Tue

**MOUNTAIN BIKE: TUESDAY NIGHT RIDE, PARK CITY (MOD-MSD)** For meeting place info, call Lade Heaton (649-4612), Vince Desimone (649-6805), David Anderson (532-0947), or Linda Palmer (484-3959).

Jun 15 Wed

**ROAD/MTN BIKE: WEDNESDAY NIGHT RIDE (NTD-MOD)** A social and training ride, Chris Winter (364-6612) will meet at Little Mtn (top of Emigration Canyon at the parking lot overlooking Mtn Dell Reservoir) at 5:30 pm for a ride to the top of Big Mtn. Go at your own pace and turn around when you've had enough.

Jun 15 Wed

**WEDNESDAY EVENING HIKE:** Mill Creek Canyon. See page 17 for details. Join in for pizza after hike.

Jun 16 Thu

**THURSDAY EVENING HIKE:** City Creek—meet at UT Travel Council lot southeast of Capitol (about 120 E 300 N), shuttle down State, left (east) at N Temple, up 2nd Ave., left (north at B St.), straight at 11th Ave., then right at City Creek entrance park at Upper Canyon, Area 4 picnic site—there will be someone waiting there. Hikes into main and/or side forks of CC. Burger fry and beach style volleyball afterwards at picnic site.

Jun 16 Thu

**THURSDAY EVENING CLIMBING—GATE BUTTRESS** in Little Cottonwood Canyon. Be at the dirt parking lot 1 mile up from the electric sign by 6:00 pm to be included in a rope team. Call Kyle Williams (567-9072) if you have questions.

Jun 16-20 Thu-Mon

**CAR CAMP: ELK RIDGE EXPLORATORY** Mark McKenzie (486-4986) plans to visit the high country east of Dark Canyon. He's interested in areas such as Beef Basin, but there are many options. Mark will leave Thursday afternoon and return Monday morning. High clearance vehicles will be needed for the rough dirt roads of southeastern Utah. Call Mark to register and get more details.

Jun 17-18 Fri-Sat

**BOATING: ALPINE CANYON** (Class III-III+) Jeff Barrell (278-3510) has a camp permit for Alpine and would be interested in doing some boating. The water should be good at this time of year. Call Jeff for the particulars.

Jun 17-19 Fri-Sun

**CLIMBING-CITY OF ROCKS, IDAHO** Join Chris Atkin (645-9665) for a weekend of some of the best climbing anywhere. Granite routes of all levels of difficulty await the first 8 lucky callers. Yes, you and your Dating Game chaperone will leave Friday as early as possible in order squeeze the most from this great event.

Jun 18 Sat

**HIKE: DESOLATION LAKE/DOG LAKE LOOP HIKE**

Join Susan Allen for this 11 mile inter-lake trek. Call Susan (485-9209) to register, she'll take the first 10 callers. Rating 9.0.

Jun 18 Sat

**HIKE: DEVILS CASTLE** If you get your kicks from exposure and scrambling, then this is your hike, but only if you call leader Mohamed Abdallah (583-8700) to register. Rating 4.4.

Jun 18 Sat

**HIKE: GREENS BASIN** Bring snacks for the kids, a litter bag, plenty of water, sturdy shoes, and lots of smiles on this family hike. Join Carl Decker (295-0359) at the park and ride lot in Big Cottonwood Canyon at 9:30 am. Rating 2.5

Jun 18 Sat

**HIKE: NEFF'S CANYON** Allen and Ilka Allers-Olsen will lead this big hike for stout hikers. Limit 12 people. Call Allen or Ilka (272-6305) to register for this hike in the Mt. Olympus Wilderness. Rating 7.6

Jun 18 Sat

**HIKE: WHITE PINE** Join Louise Rausch for one of the WMC's favorite annual hikes. Come prepared for a heavy duty workout. Bring hiking boots, water, and trail goodies for a hike to this high mountain reservoir. Meet at the Big Cottonwood lot at 9:00 am. Rating 7.5

Jun 18 Sat

**HIKE: WILDCAT RIDGE** Steve Carr will tackle this annual marathon hike. If he can, he would like to find 13 tigers to share this hike. Call Steve (261-5787) to register and get the meeting time and place (It's a secret.) Rating: an easy 14.9

Jun 18 Sat

**ROAD/MTN BIKE: BIG MTN LOOP - TOUR OF FIVE RESERVOIRS (MSD)** Join leader Lade Heaton (277-8832 or 1-649-4612) at Park City High School, 1750 E Kearns Blvd, for this ambitious tour of Rockport, Echo, East Canyon, Little Dell and Mtn Dell reservoirs. Lots of miles (80) and beaucoup climbing (3800'). Meet Lade at 8:15 am.

Jun 18 Sat

**ROAD/MTN BIKE: THE DRAPER RIDE (NTD)** The Salt Lake County Parks and Recreation is hosting a family bike ride at 9:00 am. The ride has a 12 or 21 mile option. Call SL County Parks and Recreation (468-2560) for details. Advanced registration is \$5 for children under 12, \$6 for adults. Day-of-ride registration fees are \$7 and \$8, respectively.

Jun 18-19 Sat-Sun

**HIKE: FAMILY CAR CAMP IN DINOSAUR NATIONAL MONUMENT** Bring your kids, ages 8 and up, for this fun weekend car camping. The dinosaurs are waiting... Call leader Chris Baerschmidt (272-7952) to register.

Jun 18 Sat

**SOCIAL: NEWCOMER'S HIKE AND BARBECUE** If you've joined the club in the past 12-18 months (or still feel like a newcomer) come and meet some other new faces. Join us at 9:30 am at the bottom of Big Cottonwood Canyon (park and ride) for one or two hikes (slow or moderate) up at the Mountain Club Lodge at Brighton. Barbecue starts at 1:30 pm. Alexis will be showing a short version of his enlightening slides on the history of the Mountain Club at 4:00 pm (They're fascinating!). Cover fee \$3.00. Please RSVP with Felicia (266-9462) or Alan (1-776-9206) by Friday the 10th so we can plan the food.

Jun 19 Sun

**HIKE: LAKE BLANCHE** Flower and family hike, but Cindy warns, "If you're not willing to stay with the group, don't come on this 5.7 rated hike". Meet leader Cindy Cromer (355-4115) at Skyline High School, east lot, at 9:00 am. Limit 13 hikers.

Jun 19 Sun

**HIKE: LONE PEAK VIA JACOB'S** Sign up or don't show up as there is a limit of 13 for this hike in the Lone Peak Wilderness. It's first come, first go as Mohamed Abdallah (583-8700) leads the intrepid ones on this hike. This is a very strenuous full day hike, rated 13.0.

Jun 19 Sun

**HIKE: MT. AIRE VIA BURCH HOLLOW DOWN ELBOW PIPELINE** Brad Yates (359-4913) leads this more difficult (rated 7.2) hike for those who have been getting in condition this Spring on other Club hikes. Be prepared for a good workout. Meet at 9:00 am at the east lot at Skyline High School.

Jun 19 Sun

**HIKE: STANSBURY MOUNTAINS** Join Pat Kottcamp on a moderate hike to a 9,143 ft. peak in the Stansbury range. Join Pat on this rarely climbed peak at the North end of the Stansbury range for great views of the west desert: different is good! Meet at 8:00 am at the East parking lot at Skyline High School.

Jun 19 Sun

**MOUNTAIN BIKE: PIPELINE TRAIL TO OVERLOOK (NTD+)** Join us for a ride down the Pipeline Trail to Burch Hollow, then to the overlook and all the way down Millcreek Canyon. Great scenery; some exposure as trail winds along hillside. Meet at 9 am at Skyline High. For more information, call Lucy Shoell (572-2534).

Jun 19 Sun

**ROAD BIKE: WANSHIP DAM TO KAMAS (NTD)** A good ride to celebrate Father's Day, this is a 34 miler with no major climbs. Meet Dave Vance (486-1878) at the KMart on Parley's Way at 9:00 am or at Wanship Dam (I-80 to Wanship, turn right and up the hill) at 10:00 am. Food available in Kamas.

Jun 20 Mon

**ROAD/MTN BIKE: MONDAY NIGHT RIDE (NTD)** A social ride at a relaxed pace, Bill Walton (969-8948) will meet riders at West Valley City Park (4566 W 3500 S) at 6:00 pm. Call him for details on tonight's ride.

Jun 21 Tue

**MOUNTAIN BIKE: TUESDAY NIGHT RIDE, SALT LAKE CITY (NTD)** For meeting place info, call David Anderson (532-0947), Linda Palmer (484-3959), Lade Heaton (649-4612), or Vince Desimone (649-6805).

Jun 22 Wed

**WEDNESDAY EVENING HIKE:** See details on page 17 for hike in Big Cottonwood Canyon.

Jun 22 Wed

**ROAD/MTN BIKE: WEDNESDAY NIGHT RIDE (NTD-MOD)** A social and training ride. Thom Dickeson (967-7970) will meet at Little Mtn (top of Emigration Canyon at the parking lot overlooking Mtn Dell Reservoir) at 6:00 pm for a ride past Mountain Dell Reservoir and up Lamb's Canyon. Go at your own pace and turn around when you've had enough.

Jun 22 Wed

**SOCIAL: WEDNESDAY NIGHT AT THE MOVIES** Join WMC and Sierra Singles for Wednesday Night at the Movies. Meet at the Sugarhouse San Francisco Sourdough Pizza Co. for pizza at 6 pm or show up before 6:50 before walking over to the Cinemark Movies Ten to catch a flick. Call Ken (363-4009) if you have any questions.

Jun 23 Thu

**THURSDAY EVENING HIKE:** Little Cottonwood. See page 17 for details.

Jun 23 Thu

**THURSDAY EVENING CLIMBING—GATE BUT-TRESS** in Little Cottonwood Canyon. Be at the dirt parking lot 1 mile up from the electric sign by 6:00 pm to be included in a rope team. Call Kyle Williams (567-9072) if you have questions.

Jun 24-26 Fri-Sun

**MOUNTAIN BIKE: BOOK CLIFFS - TAVAPUTS PLATEAU FOUR WHEEL CAR CAMP (MOD)** Join us for a 2-3 day camp/mtn. bike ride above the Book Cliffs/ East Tavaputs Plateau between the Green River and Ouray. Call Lade Heaton (277-8832 or 1-649-4612) to register and receive information.

Jun 24-25 Sat-Sun

**BACKPACK FOR BEGINNERS: LEADER'S CHOICE** John Shavers, Felecia Kulsic, Linda Kosky 'going somewhere south'. Planning meeting evening of the 21 June at the Club office. Another beginners backpack in August sometime 'up north somewhere'.

Jun 25 Sat

**SOCIAL: CONTRA DANCE AND POT LUCK DINNER** Rob Snow and the Loose Shoes Band will be providing the music for this annual fun event. Pot luck starts at 6:00 pm, dancing at 7:30 pm at the Mountain Club Lodge. There will be plenty of instruction provided—no partners needed—bring your friends. Cover fee \$5.00. Call Terry (467-8027) or Mary Ann (467-6711) or Sam (277-1789). *There may still be plenty of snow up at the lodge, so be sure to wear appropriate shoes and don't forget your flashlight!*

Jun 25 Sat

**HIKE: CARDIFF PASS** Meet Rich Gregerson (467-6247) at the Big Cottonwood park and ride lot. This will be an easy paced hike, a good one for newcomers and beginners or for those who want to lope along for a change of "pace". Rating 2.9.

Jun 25 Sat

**HIKE: RED PINE LAKE** John is concerned that only 13 people go on this wilderness area hike. Meet John Marks (278-1092) at the zeast parking lot at Skyline High School at 9:00 am. Rated 5.2.

Jun 25 Sat

**HIKE: THAYNES PEAK** Joe Gates (943-0957) plus 13 companions will tackle this 6.1 rated hike. Meet at the East parking lot of Skyline High School at 9:00 am.

Jun 25 Sat

**ROAD BIKE: MTN GREEN TO EAST CANYON (NTD+)** Lyman Lewis (1-649-9632) will lead this 45 miler that has 650' of elevation gain. Car-poolers meet at 9:00 am at the parking lot on the west side of the state capitol. The ride starts at the Old Farm Market in Mtn Green at 10:00 am and will stop for lunch at the Park Concession at East Canyon Reservoir.

Jun 25-26 Sat-Sun

**CAR CAMP: BLACK BOX EXPLORATORY** Donn Seeley (595-1747) has extravagant plans to visit both the upper and lower Black Box on the San Rafael River. Donn warns that much of the hiking will be done in water and there will be some scrambling over rocks and possible swimming. Hikers will need to bring flotation (inner tubes) and boots that they can afford to get wet. Donn has been through the upper Box, which is a strenuous, all-day hike; the lower Box involves a loop hike and more water. Call Donn to register and get details. Limit: 12.

Jun 26 Sun

**HIKE: DESOLATION LAKE** Phil Fikken (583-8499) will take his turn at leading a 5.4 hike to this lake on the Big Cottonwood-Mill Creek divide. Phil is not finicky about who goes hiking with him, but be prepared and in good condition for this moderate (5.4) hike. Meet at the east parking lot of Skyline High School.

Jun 26 Sun

**HIKE: DESOLATION TRAIL** Norm Pobanz (266-3703) will lead this long classic. Call Norm to register.

Jun 26 Sun

**HIKE: MILL CANYON PEAK** Join Pat Kottcamp (467-7231) at the park and ride lot at 5300 S and I-15 at 8:00 am for this moderate hike. This is a view master with the incredible north face of Mt. Timpanogos on one side and the rarely seen aspect of the Little Cottonwood Divide on the other.

Jun 26 Sun

**HIKE: MUELLER PARK TO WHITE ROCKS** Meet Dorothea Eiting (295-9205) at Mueller Junior High school 1800 S. 900 E. in Bountiful. Dorothea says this is going to be a leisurely paced hike. Could she mean leisurely conversation? leisurely flower watching? Come along and find out...

Jun 26 Sun

**ROAD BIKE: WANSHIP TO CHALK CREEK (MOD)** This is our first time this year up Chalk Creek Canyon. It's a beautiful ride, good road, little traffic. Distance is 68 miles with 1500' of elevation gain mostly as a gentle climb and almost all on the outbound leg. Meet Jim Piani (272-3921) at the KMart on Parley's Way at 9:00 am or at 10:00 am at Wanship Dam (I-80 to Wanship, right turn and up the hill). We'll picnic at the WY-UT border. Food is available at the convenience store in Coalville.

Jun 27 Mon

**ROAD/MTN BIKE: MONDAY NIGHT RIDE (NTD)** A social ride at a relaxed pace, Bill Walton (969-8948) will meet riders at West Valley City Park (4566 W 3500 S) at 6:00 pm. Call him for details on tonight's ride.

Jun 27-Jul 1 Mon-Fri

**BOATING: DESOLATION CANYON** (Class III) Elliot Lips (487-8473) has a permit that he would like to give to the Club if anyone is interested. Call Elliott to see about transferring the permit.

Jun 28 Tue

**MOUNTAIN BIKE: TUESDAY NIGHT RIDE, PARK CITY (MOD-MSD)** For meeting place info, call Lade Heaton (649-4612), Vince Desimone (649-6805), David Anderson (532-0947), or Linda Palmer (484-3959).

Jun 29 Wed

**ROAD/MTN BIKE: WEDNESDAY NIGHT RIDE (NTD-MOD)** Tonight's ride will be led by Chris Winter (364-6612). It will start on the northeast side of the state capitol at 5:30 pm and proceed up City Creek Canyon. Social and training riders are both welcome. Go at your own pace and turn around when you've had enough.

Jun 29 Wed

**WEDNESDAY EVENING HIKE:** Mill Creek Canyon. See page 17 for details.

Jun 30 Thu

**THURSDAY EVENING HIKE:** Big Cottonwood. See page 17 for details. Burgers afterward at Storm Mtn picnic area.

Jun 30 Thu

**THURSDAY EVENING CLIMBING—GATE BUTTRESS** in Little Cottonwood Canyon. Be at the dirt parking lot 1 mile up from the electric sign by 6:00 pm to be included in a rope team. Call Kyle Williams (567-9072) if you have questions.

Jul 1-4 Fri-Mon

**ROAD BIKE: BIKE AND CHOO-CHOO IV (MOD)** This ride has been so popular that it has become an annual affair. We will drive to Durango, CO on Friday. On Saturday, we will take the 8:30 am train to Silverton and bike over Molas Divide and Coalbank Hill, 50 miles back to Durango (2387' up, 5205' down) or, if you are ambitious, you can bike from Durango to Silverton. The next day we will drive to Silverton, bike over 12000' Red Mtn Pass (1685' climb) and down to Ouray (3302' descent) where there are beautiful and soothing hot springs, and camp there. Then, on Monday, drive to Telluride for a ride back to Ouray, and drive home on Monday pm. We will stay in camp grounds and do group cooking. Total mileage for three days - 125, mostly downhill with a tailwind. This is probably the most scenic paved road ride anywhere. Sag wagon is provided. Total cost of the train ride, food, camping and sag wagon is \$85. We will have an organizational meeting and barbecue at Bob and Denna Wright's house, 3886 Holiday Curve, Park City, on Sunday, June 5 at 6:30 pm. Bring something to barbecue and a pot luck dish. Call Bob Wright (1-649-4194) by June 1 to register, a \$28.45 deposit needs to be in before June 1 to reserve train space. Mail to Bob at the above address.

Jul 2 Sat

**HIKE: GREENS BASIN** Doug Stark (277-8538) wants you to come out and enjoy an easy, slow paced hike with him. Meet Doug at the east lot, Skyline High, at 9:00 am.

Jul 2 Sat

**HIKE: MAYBIRD LAKES** One of Randy's favorite hikes and he invites a lucky 13 WMC hikers to come along with him. Call leader Randy Long (943-0244) for hike information or meet at the east lot of Skyline High at the usual 9:00 am.

Jul 2 Sat

**HIKE: MT RAYMOND FROM BUTLER FORK** Join Cindy Buchman (944-1713) for a good tough hike (7.2) to this rocky peak on the Big Cottonwood-Mil Creek ridge. Meet at the usual time and place, east lot Skyline High School at 9:00 am.

Jul 2 Sat

**HIKE: TWIN PEAKS VIA BROADS FORK** Bring your ice axes and know how to use them on this very tough (11.5) hike. Register with George Westbrook (942-6071) as there is a limit of 13 in this wilderness area hike.

Jul 2 Sat

**MOUNTAIN BIKE: TELEMAR PARK RIDE #2: GAME TRAIL, SPIN CYCLE (MSD)** Explore the fine riding above the base of Deer Valley. This fairly short ride is mostly singletrack with a technical gully in the middle of the ride. Total mileage is 5, with about 900' of elevation gain. Meet at 9 am at the Parley's K-Mart to carpool, or at 10 am at the Snow Park lodge, at the bottom of Deer Valley resort. For details, call Linda Palmer (484-3959).

Jul 2-4 Sat-Mon

**CAR CAMP: GREAT BASIN NATIONAL PARK** Join Donn Seeley (595-1747). Details next issue.

Jul 2-4 Sat-Mon

**HIKE: GRAND TETON BACKPACK** Join Mohamed Abdallah (583-8700) for this strenuous backpack in the tetsns. Call to register.

Jul 3 Sun

**HIKE: ALBION BASIN FAMILY HIKE** Chris Baierschmidt (272-7952) plans on leading this hike for younger children to Secret Lake, followed by a picnic. Meet at 10:00 am at the Big Cottonwood park and ride by the Geology sign.

Jul 3 Sun

**HIKE: AMERICAN FORK TWINS VIA AMERICAN FORK CANYON** The galloping Caldwells are doing it again! If you want to join them, call Karin or Dennis Caldwell (942-6065) to register. Limit 12

Jul 3 Sun

**ROAD BIKE: EAST CANYON HENEFER LOOP (MOD)** Meet Marcia Hansen (486-5724) for a lovely ride around the Morgan, Peterson, Croydon area with a picnic stop at the midpoint. If you want to carpool, meet (without leader) at the KMart on Parley's Way at 8:00 am. Ride will start at the Parking Lot of East Canyon Resort at 9:00 am. 64 miles with approximately 2000' of climb. Food is available at a convenience store in Peterson.

Jul 3 Sun

**HIKE: KESSLER PEAK - ARGENTA TRAIL** This hike goes up to the Carbonate Mine and Kessler peak on a steep old trail recently rediscovered, and returns via the North trail. Requires a car shuttle, meet at Big Cottonwood lot at 8:00 am. Leader: Charles Keller (467-3960).

Jul 4 Mon

**HIKE: BROADS FORK TO THE BRIDGE** A leisurely hike in this designated wilderness area permits only 13 people to join Joyce Sohler (487-6536). First come, first served... Meet at the east lot at Skyline High School at the usual 9:00 am.

Jul 4 Mon

**HIKE: MONTE CRISTO—SUPERIOR VIA LAKE BLANCHE** When you meet Rob Rogalski (272-2365) for this great hike (rated 11.2) be prepared for a good one. Call Rob to register as there is a limit of 14 (including Rob!)

Jul 4 Mon

**ROAD/MTN BIKE: COPPERTON PARK PANCAKE BREAKFAST (NTD)** Join Jim Zinanti (967-8578) at the West Jordan Park (7941 S 2200 W) at 8:00 am for an easy, *before I've had my coffee*, pace to Copperton Park to partake of their community pancake breakfast. There's no rush; breakfast is served until 11:00 am. After breakfast it's a slight downhill all the way back in case you have eaten too many pancakes. Total miles: 20, elevation gain—minimal.

Jul 5 Tue

**MOUNTAIN BIKE: TUESDAY NIGHT RIDE, SALT LAKE CITY (NTD)** For meeting place info, call David Anderson (532-0947), Linda Palmer (484-3959), Lade Heaton (649-4612), or Vince Desimone (649-6805).

Jul 6 Wed

**BOARD MEETING:** Attend the WMC board meeting at 7:30 pm at the Club office 888 S., 200 E. A pre-board meeting will be at the Trang restaurant, 818 S. Main St., at 6:30 pm.

Jul 6 Wed

**WEDNESDAY EVENING HIKE:** Big Cottonwood. See page 17 for details.

Jul 6 Wed

**ROAD/MTN BIKE: WEDNESDAY NIGHT RIDE (NTD-MOD)** Tonight's ride will start at 6:00 pm at the parking lot on the north side of Olympus Hills Mall (3900 S, just east of Wasatch Blvd) and climb up Millcreek Canyon. Lily Schumann (561-3756) will lead the ride. Come along! If you make it to the top, fine. But part way is OK, too.

Jul 7 Thu

**THURSDAY EVENING HIKE:** Mill Creek Canyon. See page 17 for details.

Jul 9 Sat

**ROAD BIKE: LEHI (NTD+)** This 45 mile ride tours the southern end of Salt Lake County and the northern end of Utah County. We'll ride through the communities of Riverton, S Jordan, Draper and Bluffdale and stop at Porter's in Lehi for lunch. Going south, the route snakes around the Traverse Mountains at the Point of the Mountain and dissects Camp Williams on the return. While this course contains a couple of short climbs, the terrain is predominantly easy flat to rolling. Meet Elliott Mott (968-7357) at West Jordan Park, 7900 S 2200 W, at 9:00 am.

Jul 9 Sat

**SOCIAL: COFFEEHOUSE AT THE LODGE** 7:30 pm \$3.00 Enjoy an evening of acoustic music in a mountain setting. Bring your own refreshments. Coffee and juice will be provided. If you would like to stay overnight, bring a flashlight, sleeping bag, and an additional \$3.00 for overnighting at the lodge. Musicians interested in performing a 15-20 minute set, contact Guy Benson (582-5856). Event is open to all.

Jul 9-10 Sat-Sun

**HIKE: HIGH Uintas BACKPACK** Brian Barkey will lead a hearty party of 8 tough souls for an overnighiter. (Actually the hiking is easy to moderate.) Call Brian (583-1205) to register.

Jul 9-10 Sat-Sun

**LODGE WORK PARTY** We have a lot of work planned for this first work party of the year. Come and join the fun! We hope to have at least 100 people working this weekend, so put it on your calendar! Call Rich Osborne (1-647-0205) for more details.

Jul 10 Sun

**TRAIL CLEARING** Chris Biltott (364-5729) wants you and you and me for trail clearing between Affleck Park and City Creek Canyon. Three crews are needed. Team 1: to work on the eroding wet area on the ridge above Killyon Canyon, placing stones in the sunken track and diverting some of the water. Team 2 will go in to Lookout Peak and brush out the trail section from Miners Hole to Lone Pine Pass. Team 3, using saws and lopers will cut deadfall and brush out that section of trail. Meet at Rice Stadium parking lot at the U of U. Call Chris for meeting time and help plan get together when the work is done.



Jul 10 Sun

**ROAD BIKE: KAMAS TO BUTTERFLY LAKE (MOD)**

Last year we were a little early doing this ride and there was a ton of snow on the Pass. This year we should be snowless, but up in the Uintas, you never know for sure. Meet Sam Kingston (355-8043) at the KMart on Parley's Way at 9:00 am to carpool or at S Summit High, 300 E Center, Kamas, at 10:00 am for this 68 miler. Lots of beauty, lots of climb - 4250', all of it on the outbound leg.

Jul 11 Mon

**ROAD/MTN BIKE: MONDAY NIGHT RIDE (NTD)** Meet Jim Zinanti (967-8578) at 6:00 pm at W Jordan Park (7941 S 2200 W) for a gentle, socially paced ride. Call Jim if you want details.

Jul 13 Wed

**ROAD/MTN BIKE: WEDNESDAY NIGHT RIDE (NTD-MOD)** This is a social and training ride. Jim Zinanti will accommodate both ends of the spectrum. We'll start at Cardiff Fork in Big Cottonwood Canyon at 6:00 pm and head for Brighton. Come along! If you make it to the top, fine. But part way is OK, too.

Jul 16 Sat

**SOCIAL: BARBECUE, VOLLEYBALL, AND CROQUET.** 6-9 pm Come and enjoy an outdoor party at 2052 E. Arbor Lane (5000 S) Park at Cottonwood Mall parking lot just east of J.C. Penney. Take the little path that goes east of the parking lot and into Arbor Lane. (Watch for the balloons.) Bring a pot luck dish, something to grill, and \$2.00 for paper goods and beverages. Soft drinks and coffee provided. Bring your own other drink choices. For more details, call Camille (272-4552) or Mary Ann (467-6711 / 278-4587).

Jul 16-17 Sat-Sun

**HIKE: HIGH UINTAS BACKPACK** Mark Jones will lead an easy exploratory trip to the high Uintas. (Possibly looking for survivors from Brian's trip) Call Mark (486-5354) to register.

Jul 17 Sun

**HIKE: BOEING 247 CRASH SITE** Kip Yost (487-3952) will take you to Lake Hardy (where it happened?) The views are great but come prepared for some scrambling and steepness. Estimated rating 10.

**THU. EVENING HIKE INFORMATION**

These hikes are for members only. Meet at 6:30 pm; all hikes leave the meeting place PROMPTLY by 6:45 pm. All participants must sign the liability release form. Boots or appropriate footwear are required. NO DOGS. Carpool passengers pay the Mill Creek canyon entrance fee; please bring change.

Hikes in Mill Creek Canyon meet at Skyline High (3251 E 3760 S) parking lot.

Hikes in City Creek meet at UT Travel Council (about 120 E 300 N).

Hikes in Little & Big Cottonwood Canyons meet in Park & Ride lot.

Everyone wear hiking boots and bring H<sub>2</sub>O

**WED. EVENING HIKE INFORMATION**

These hikes are open to families and prospective members, and are slow-paced, nature-oriented strolls. Meet at 6:30 pm and leave by 6:45 pm. All hikers must sign the release form. Carpool passengers pay the Mill Creek Canyon entrance fee; please bring change.

Hikes in Mill Creek Canyon meet at Skyline High (3251 E 3760 S) parking lot.

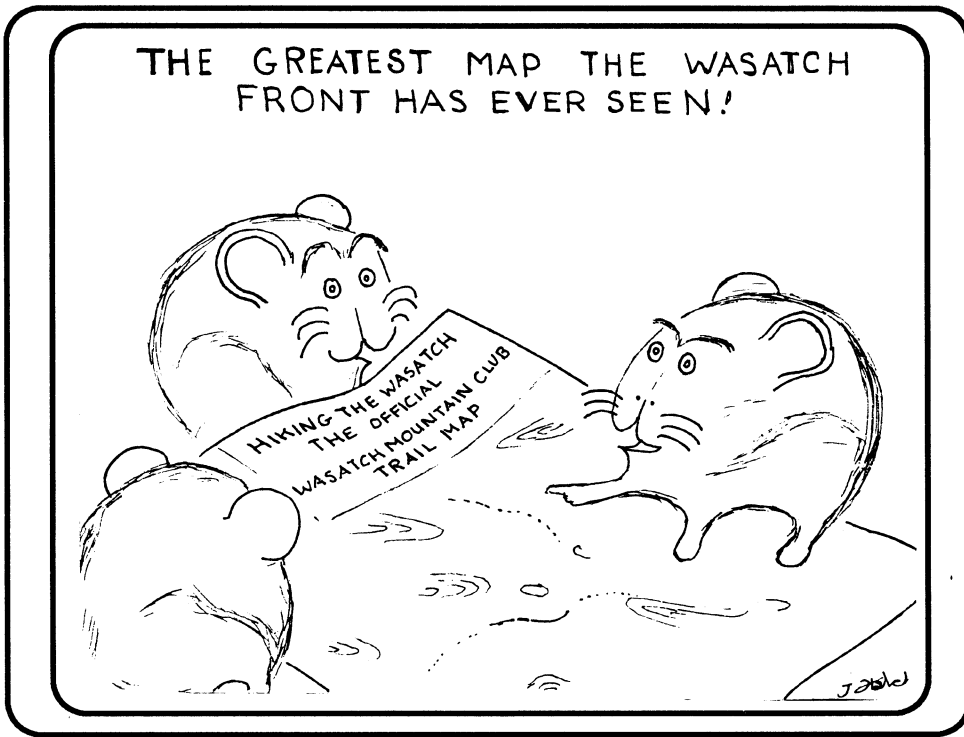
Hikes into Big Cottonwood Canyon meet in Park & Ride lot.

Everyone wear hiking boots and bring H<sub>2</sub>O.

# HOT OFF THE PRESS! Hiking the Wasatch

The Official  
Wasatch Mountain Club Trail Map  
For the Tri-Canyon Area  
**MILL CREEK**  
**BIG COTTONWOOD**  
**LITTLE COTTONWOOD**  
(Plus an inset for LONE PEAK)

A complete, up-to-date map of the tri-canyon trail system.  
Field checked for accuracy.  
All mileages measured.  
Printed on durable water- and tear-resistant stock  
for years of hiking enjoyment.



Cartography by Dale Green  
Published by The Wasatch Mountain Club  
and  
The University of Utah Press

## SPECIAL INTRODUCTORY OFFER!

The regular price in all stores for this map will be \$9.95 (plus tax). As a Mountain Club member, you may purchase a copy for only \$8.00 (plus \$0.50 tax) for a limited time from several Club members and at Club Headquarters (open Mon. & Wed., 9:00 a.m. to 2:00 p.m.) At this writing, Mike Budig, Dale Green, Sam Kievit, Linda Kosky and Donn Seeley have a supply for sale. They will have them available at the meeting places for most hikes and other selected gatherings. Out-of-state members may purchase a mailed copy for an additional \$1.00 postage and handling (\$9.50 total). Make checks payable to the Wasatch Mountain Club.

**We urge Club members to purchase their map from the WMC rather than from the stores. You save \$2.00 and the Club makes a profit.**

# WMC SPONSORED COMING ATTRACTIONS

Jul 30 Sat

**SOCIAL: SECOND ANNUAL CHILI COOK-OFF AND DANCE.** Bring entries to the Lodge by 6:30 pm. Pot luck at 7:00 pm, dancing at 8:00. \$7.00 cover fee. Coffee provided. Music by the Wind River Band (Country & Western and Rock & Roll). For further details call Linda (943-1871) or Mary Ann (467-6711 / 278-4587). **Read all about last year's success on page 30.**

Aug 13-14 **LODGE WORK PARTY** Come and join the fun! We hope to have at least 100 people working this weekend, so put it on your calendar! Call Rich Osborne (1-647-0205) for more details.

Aug 20

**ROAD/MOUNTAIN BIKE: LUNAR TREK III** Salt Lake County Bicycle Advisory Committee has a new route planned for this annual ride in the moonlight. More details next month.

Aug 26-Sep 4

**BACKPACK: GORE RANGE** Mike Budig leads this 54 mile strenuous backpack in Colorado; more details in later *Ramblers*.

Sep 16-21

**BACKPACK: YELLOWSTONE** Also from Mike Budig, a 35 mile light to moderate backpack. More details in later *Ramblers*.

Sep 10-11 **LODGE WORK PARTY** Come and join the fun! We hope to have at least 100 people working this weekend, so put it on your calendar! Call Rich Osborne (1-647-0205) for more details.

Sep 16-18

**MOUNTAIN BIKE: SKYLINE DRIVE FOUR WHEEL CAR CAMP (MOD)** A 3-4 day trip along Skyline Drive an unpaved road on top of the Manti-LaSal Natl Forest from Thistle to Emery. Car camp, hike and mtn bike. Call Lade Heaton (277-8832 or 1-649-4612) to register and receive information.

Oct/Nov

**SAIL THE CARIBBEAN ISLANDS** between St. Martin and Antigua in late October or early November. Deposits of \$300 for this trip will be accepted for those wishing to participate. Deposits will be refundable until June 5 at no penalty; after that date, a \$25 cancellation fee will be charged. Persons wishing to send a deposit prior to the party are welcome to do so. A final participant list will be firmed up in June. Phone Vince Desimone (1-649-7805) if you wish to discuss anything about the trip. To be eligible to participate, send a deposit; **however**, a deposit does not guarantee participation. **Please read full details on page 32.**

Oct

**SEA KAYAKING ON LAKE POWELL** Hugh Hansel is planning a trip to Lake Powell late in the season in hopes of missing most of the tourists. The itinerary is still open. Please call Hugh Hansel (568-3731) to sign up. There will be more details in future *Ramblers*.

-----  
*There are non sponsored trips available to Club members listed in the classified ads pages*  
-----

## FROM THE PRESIDENT

by Jerry Hatch

Mary Fleming said something that touched me very deeply, "The death of a friend leaves a great black empty hole in our life." It certainly does.

How could someone as seemingly invincible as Wick Miller have been swept away in a freakish bicycle mishap in northern Mexico?

"Life is so fragile," said Mike Treshow—and how right he is.

Besides having been something of an institution in this organization, Wick had two qualities that struck me as wonderful in their juxtaposition. He was very bright and very successful, (being one of the most highly regarded experts on Indian languages in this country), yet he was also a simple and gentle man. In checking through my mental files, I can find not a single instance of arrogance or condescension. To borrow from Mike again, there was something very real and genuine about Wick.

Wick was so many people's friend because he cared about them. The outward sign of this caring was of course that wonderful, slightly mischievous grin of his. one of the first times that I ever saw it was when I had arrived rather late for a hike on a bright , but still rather rain dapp, spring morning. Wick offered to give me a ride up to Church Fork, "... if you don't mind riding in back with my dog." Checking my mental files again, I can see myself stuffed jaw to jowl with the dog in the back of Wick's tiny station wagon. The ride up wasn't

too bad, but on the way back down Butch was decidedly wet, and therefore a little odoriferous ... (Mike Binyon tells how Butch once got sore paws in the Jarbridge Mountains, and Wick had to carry him all the way back down,—and Butch wasn't that light a dog.)

The hike that Wick led most consistently was, of course, Notch Peak. For many years he would meet us in the 6:00 a.m. darkness of an October morning and give careful directions to that great stepped and tawny mountain. Driving out we would often watch the sun as the peaks and basins became filled with light. The scramble up Sawtooth Canyon was interesting, but it was the view from the top that mesmerized all of us, (all of us except Butch that is, who had a propensity of getting quite close to that two thousand feet of straight, vertical nothingness.)

As much fun as the hike was, perhaps even more enjoyable was the evening dinner in Delta. There always seemed to be a large number of people, and somehow the actual sitting around a table with Wick gave a completely unique character to the meal. There were always several excellent raconteurs, but it was Wick's presence that made these occasions so memorable. After dinner we would drive back beneath the same dusting of stars as we started out under. Of all the hikes that I have done with the Club, I think that these will remain my favorites. Donn Seeley thinks that Notch Peak should be designated "*The Wick Miller Memorial Hike*". I think that it's a nice idea.

### LODGE WORK PARTY

We have a lot of work planned for July 9-10, the first work party of the year. Come join the fun; meet with old and new friends! We hope to have at least 100 people working at the Lodge this weekend. So put it on you calendar of important things to do!!

Projects will include:

- Porch roof and supporting structures
- Structural repairs to foundation and rafters
- Chimney repairs
- Chop and split wood, create a path around building for snowblower
- Tear down and remove old outhouse (Ed. Comment: *Yippee!*)
- Cosmetic work on our three new doors
- Mortar all logs
- improve patio drainage system
- paint

## Wasatch Mountain Club Hike Ratings

(Revised 3/21/93 by Dale Green)

(Wilderness/Pre-registration annotation by Donn Seeley)

These ratings are a mathematical calculation derived by giving 1 point for every 1,000 feet of ascent and adding 0.3 points for every round trip (RT) miles. Extra points are added for off-trail miles (bushwhacking), exposure (high-angle scrambling), and elevations over 10,000 feet.

Hike Description	Rating	WP	RT Miles	Total Ascent	Max Elev
Pipeline, v.Burch Hollow to Church Fork	0.7		1.90	0	6000
Pipeline, v.Elbow Fork to Burch Hollow	0.9		2.19	0	6620
Doughnut Falls	1.1		1.55	360	7820
Pipeline, v.Church Fork to Burch Hollow	1.1		1.90	300	6000
Secret Lake from Albion Basin Campground	1.2		1.67	420	9860
Willow Lake	1.4		1.61	600	8500
Solitude, Lake, v.Silver Fork	1.5		2.76	310	9040
Pipeline, v.Burch Hollow to Elbow Fork	1.6		2.19	600	6620
Pipeline, v.Church Fork to Rattlesnake Gulch	1.6		3.11	300	5990
Stairs Gulch to 6700'	1.7	W	1.44	900	6700
Mary, Lake, from BLTH	1.8		2.06	750	9540
Catherine Pass v.Albion Basin	1.9		2.11	790	10220
Pipeline, v.Rattlesnake Gulch to Church Fork	1.9		3.12	550	5990
Twin Lakes v.Silver Lake	1.9		2.42	730	9460
Elbow Fork to Terraces TH	2.0	W	2.67	740	7370
Mill B, NF Overlook	2.1	W	2.29	900	7120
Pipeline, SL Valley viewpoint v.Rattlesnake Gulch	2.1		3.59	540	5980
Broads Fork to bridge	2.2	W	2.33	960	7160
City Creek Twin Peaks#	2.3		2.20	1090	6291
Dry Lake v.Willow Lake	2.3		2.75	920	8820
Greens Basin v.housing road	2.3		3.34	770	8330
Greens Basin v.Days Fork	2.5		3.13	990	8330
Mule Hollow to mine	2.5	W	2.41	1200	7020
Soldier Fork to BCC divide	2.5		2.11	1290	8890
Solitude Loop, v.Silver L, L Solitude, Twin Lakes	2.5		3.85	790	9620
Terraces TH to Elbow Fork	2.5	W	2.67	1120	7370
Wilson Fork to 8900'*	2.7		2.31	1400	8900
Catherine, Lake, v.BLTH & old trail	2.8		3.33	1150	9940
Evergreen, Mt., v.Silver Lake	2.8		3.39	1120	9620
Terraces TH to summit	2.8	W	3.52	1120	7370
Van Cott Peak v.Cephalopod Gulch ridge#	2.8		2.30	1350	6348
Cardiff Pass from Alta	2.9		2.82	1370	10020
Bald Mountain (Uinta Mtns.)#	3.0		2.80	1180	11943
Honeycomb Fork to Woodlawn Mine v.ski track	3.0		3.71	1210	9280
Sunset Peak v.Albion Basin	3.0		3.29	1220	10648
Catherine, Lake, v.BLTH & Lake Mary	3.1		4.08	1150	9940
Dog Lake v.LWT	3.1		3.80	1240	8780
Dog Lake v.old BWT	3.1		3.76	1240	8780
Twin Lakes Pass v.Silver Lake	3.2		4.24	1220	9993
Elbow - Lambs Pass v.Elbow Fork	3.3		3.39	1500	8130
Elbow - Lambs Pass v.Lambs Canyon	3.3		3.49	1510	8130
Elbow Fork to Lambs Canyon	3.3		3.43	1500	8130
Lambs Canyon to Elbow Fork	3.3		3.43	1510	8130
Red Butte Peak v.Georges Hollow#	3.3		3.30	1510	6472
Salt Lake Overlook, v.B.S. shortcut, Deso Trail	3.3		4.28	1270	7020

Hike Description	Rating	WP	RT Miles	Total Ascent	Max Elev
Twin Lakes Pass v.Grizzly Gulch from Alta	3.3		4.07	1320	9993
Circle All Peak v.Butler Fork	3.4	W	3.46	1610	8707
Pipeline, v.Elbow Fork to SL View, dn Rattlesnake	3.4		8.77	0	6620
White Fir Pass v.Terraces, Bowman Fork	3.4	W	3.52	1530	7590
Pencil Point#	3.5				
Snake Creek Pass v.BLTH & Majestic Trail	3.5		4.33	1350	10080
Tolcat Creek Crossing (Mt Olympus trail)	3.5	W	4.22	1400	6240
Bowman Fk > Elbow Fk > upper Pipeline loop	3.6	W	4.91	1310	7370
Dog Lake v.old Mill D, NF trail	3.6		4.63	1400	8730
Honeycomb Fork to Woodlawn Mine v.Silver Fork	3.6		5.20	1210	9280
Red Butte Pass v.Georges Hollow#	3.6		3.70	1640	6600
Salt Lake Overlook, v.Desolation Trail	3.6		4.87	1270	7020
Baldy, Mt., v.Secret Lake, Germania Pass	3.7		4.08	1630	11068
Cardiff Mine v.Cardiff Fork	3.7		4.96	1350	8810
Alexander Basin to 9000'	3.8	W	3.38	1910	9000
Dog Lake v.new Mill D, NF trail	3.8		4.75	1460	8730
Millicent, Mt., v.ski lift road & ridge	3.8		3.50	1710	10452
Reynolds Peak v.LWT	3.8		3.80	1820	9422
Sugarloaf v.Secret Lake saddle	3.8		3.50	1610	11051
Park West Overlook v.BWTH & cyn bottom trail	3.9		5.56	1330	8930
Sugarloaf v.Germania Pass	3.9		3.97	1610	11051
Aire, Mt., v.Elbow Fork	4.0		3.59	2000	8621
Flagstaff Mtn. v.Alta & jeep trail*	4.0		3.34	1880	1530
Greens Basin Trail to trail's end	4.0		4.53	740	9080
Reynolds Peak v.old BWT	4.1		4.47	1820	9422
Dog Lake v.new BWT	4.2		6.54	1240	8780
Honeycomb Cliffs v.Silver Lake, Twin Lks Pass#	4.2		4.92	1750	10479
Alexander Basin trail to Terraces TH v.Bowman Fk.	4.3	W	5.44	1710	8600
Catherine Pass v.Lake Mary	4.3		4.77	1860	10220
Devils Castle v.Albion Basin Camp (Exposure)	4.4	P	3.77	1490	10930
Big Beacon (Wire Peak) from zoo parking lot#	4.5		3.70	2240	7143
Broads Fork to meadow	4.5	W	4.76	2040	8240
Silver Fork to mines	4.5		6.16	1580	9650
Burch Hollow to Mill Creek - Parleys Ridge	4.6		4.64	2120	8140
Park West Overlook v.BWTH & GWT	4.6		7.47	1330	8930
Perkins Peak#	4.6		4.20	2290	7490
Big Beacon (Wire Peak) v.Georges Hollow#	4.7		4.70	2180	7143
Dog Lake v.Butler Fork	4.7	W	6.28	1740	8780
Little Water Peak v.LWT*	4.7		5.40	2005	9605
Little Water Peak v.old BWT*	4.7		5.36	2005	9605
Pioneer Peak v.BLTH, Catherine Pass*	4.7		3.39	2460	10430
Majestic, Mt, (Clayton Pk) v.BLTH & Majestic Trail	4.9		5.89	1930	10721
Millvue Peak v.Elbow Fork	4.9		4.96	2300	8926
Mineral Fork to Wasatch Mine	4.9		6.06	1950	8660
Sunset Peak v.BLTH & Lake Mary	4.9		5.96	1860	10648
Thayne Cyn Spring v.Deso Trail	4.9	W	5.78	2000	7710
Hounds Tooth#	5.0	W	3.60	2600	7800
Silver Fork to end of Days Fork trail*	5.0		6.61	1870	9940
Desolation Peak (9990') v.Beartrap Fork	5.1		4.96	2430	9990
Red Pine Lake from WPTH	5.2	W	6.93	1930	9630
Reynolds Peak v.new BWT	5.2		7.25	1820	9422
Reynolds Peak v.new Mill D, NF trail	5.2		6.11	2150	9422
Reynolds Peak Traverse, up Mill D, dn Butler Fk	5.3	W	6.55	2150	9422
Bowman Fork to Alexander Basin TH	5.4	W	5.44	2550	8600
Desolation, Lake, v.Mill D, NF	5.4		7.28	1970	9240

Hike Description	Rating	WP	RT Miles	Total Ascent	Max Elev
Mineral Fork to Silver Mtn. Mine	5.4		4.99	2620	9330
Tuscarora-Wolverine Peaks from BLTH*	5.4		5.80	2090	10795
Broads Fork to trail's end (8600')	5.5	W	5.99	2400	8600
Church Fork Pk Traverse, v.Burch Hol dn Church Fk	5.5		6.00	2290	8306
Days Fork to Eclipse Mine	5.5		6.61	2260	9600
Aire, Mt., from gate, v.road, Elbow Fork	5.6		5.85	2530	8621
Maybird Lakes from WPTH	5.6	W	7.52	2050	9750
Monte Cristo Mine v.Cardiff Fork	5.6		7.37	2100	9560
Blanche, Lake	5.7	W	6.06	2600	8920
Church Fork Peak v.Church Fork	5.7		5.81	2620	8306
Kessler Peak v.Cardiff Fk., north trail	5.7		4.89	2940	10403
Reynolds Peak v.Butler Fork	5.7	W	6.99	2320	9422
Grandeur Peak v.Church Fork	5.8		6.28	2610	8299
Little Water Peak v.new BWT*	5.8		8.14	2005	9605
Church Fk Pk Loop, v.Brch Hol, dn Ch. Fk, pipeline	5.9		7.07	2290	8306
Church Fork Pk Traverse, v.Church Fk dn Burch Hol	5.9		6.00	2620	8306
Aire, Mt., v.Elbow Fk, ret. v.Burch Hol, pipeline	6.0		6.79	2560	8621
Cardiff Pass v.Cardiff Fork (Mill D, SF)	6.1		7.24	2550	10010
Gobblers Knob v.Alexander Basin Trail*	6.1	W	4.44	3155	10246
Grandeur Peak v.West Ridge#	6.1		4.60	3340	8299
Kessler Peak v.Carbonate Mine trail	6.1		5.89	2940	10403
Thayne Peak v.Thayne Canyon	6.1	W	6.08	2890	8640
Mill Creek - Neffs Saddle v.Thayne Canyon	6.2	W	6.01	3000	8750
Park City Overlook v.BWTH & cyn bottom trail	6.2		8.78	2100	9700
Deaf Smith Canyon fm USFS boundary to meadow	6.3	W	5.96	3020	8400
Desolation Peak (9990') v.Mill D>L.Deso>dn Brtrap	6.3		7.09	2720	9990
Days Fork to Little Cottonwood Cyn ridge	6.5		7.88	2600	9940
Thayne Canyon to Neffs Canyon TH	6.5	W	6.73	3000	8850
Church Fk Pk Loop, v.Ch. Fk, dn Brch Hol, pipeline	6.7		7.90	2620	8306
Hayden Peak (Uinta Mtns.) (Exposure)#	6.7	WP	5.80	2120	12479
Murdock Peak v.BWTH up stream-bottom trail	6.7		7.11	3000	9602
Porter Fork Saddle v.Porter Fork	6.7	W	7.93	2790	9360
Neffs Canyon to Thayne Canyon BETH	6.8	W	6.73	3200	8550
Park City Overlook v.BWTH, GWT & old trail	6.9		10.69	2100	9700
Superior, Mt., from Alta (exposure)#	6.9	WP	5.00	3000	11050
Dry Hollow (Holladay) to BCC overlook (pk. 8498)*	7.0	W	5.99	3380	8498
Mill Creek - Neffs Saddle v.Neffs Canyon	7.1	W	7.46	3200	8550
Aire, Mt., v.Burch Hol, ridge, dn Elbow Fk, road	7.2		7.80	3190	8621
Raymond, Mt., v.Butler Fork, Deso Trail	7.2	W	8.08	3140	10241
Gobblers Knob v.Butler Fork, Deso Trail	7.3	W	8.30	3145	10246
Raymond - Gobblers saddle v.Bowman Fk.	7.3	W	8.38	3100	9350
Little Black Mountain v.Twin Peaks#	7.4		9.60	2830	8026
Lookout Mountain v.Killyon Canyon#	7.4		8.00	2950	8952
Murdock Peak v.BWTH & GWT	7.4		9.02	3000	9602
Aire, Mt., v.Burch Hol, ridge, dn Elbow, pipeline	7.5		8.52	3190	8621
Notch Peak (House Range) v.Sawtooth Canyon#	7.5		8.40	2960	9655
White Pine Lake v.WPTH	7.5		10.21	2670	10170
Emerald Lake (Mt. Timpanogos, v.Aspen Grove)#	7.6	W	7.50	3510	10360
Neffs Canyon to BCC saddle	7.6	W	7.47	3620	9190
American Fork Twin Pks fm Albion Basin (Exposure)#	7.7	P	7.80	2590	11498
Monte Cristo Peak v.Alta#	7.7	P	5.60	3420	11132
Lone Peak Cirque v.Lone Rock (end of jeep road)	7.8	WP	7.65	3440	10340
Olympus, Mt., North Peak (Exposure, Climbing)#	7.8	WP	4.80	3360	8959
Thayne Peak v.Deso Trail	7.9	W	10.39	2930	8640
Deseret Peak (Stansbury Mtns.)#	8.0	W	8.00	3610	11031

Hike Description	Rating	WP	RT Miles	Total Ascent	Max Elev
Brighton Ridge Run fm Snake Crk Pass to Millicent#	8.1		7.50	3480	10975
Aire, Mt., v.Burch Hollow, ridge, same return	8.4		9.08	3750	8621
Big Black Mountain from Mueller Park#	8.4		9.60	3560	8958
Desolation Trail, lower, up Porter Fk, to BETH	8.5	W	12.24	2840	9360
Mill B, South Fork to upper mine prospect	8.5	W	8.30	4000	10320
Bells Canyon Reservoir (upper) v.lower reservoir	8.6	W	9.41	3810	9400
Olympus, Mt., South Peak, v.Tolcat Cyn	8.6	W	7.98	4200	9026
Mineral Fork to Regulator Johnson Mine	8.7		10.45	3530	10240
Mill Creek Ridge, Mt Aire-Grandeur, stay on ridge	8.8		10.30	3280	8621
Nebo, Mt., North Peak v.Nebo Basin Trail#	8.8	WP	9.00	3330	11928
Ben Lomond v.North Ogden Cyn.#	8.9		11.00	3530	9712
Storm Mountain v.Ferguson Gulch*	8.9	W	8.12	4280	9524
Raymond, Mt., v.Hidden Falls & S. ridge*	9.0	W	8.77	4010	10241
Raymond, Mt., v.Bowman Fork	9.1	W	10.00	3990	10241
Gobblers Knob v.Bowman Fork	9.2	W	10.21	4000	10246
Bells Canyon Reservoir (upper) v.LCC water tank	9.4	W	10.14	4160	9400
Box Elder Peak from American Fork Canyon#	9.6	W	9.60	4340	11101
Mill Creek Ridge, Mt Aire - Grandeur, on trails	9.6		10.71	4010	8621
Pfeifferhorn v.Red Pine Lake#	9.6	WP	10.00	3700	11326
Sundial Peak v.Lake Blanche (Exposure)#	9.7	WP	9.40	4000	10320
Lone Peak v.Lone Rock (end of jeep road)#	10.1	WP	9.42	4350	11253
Spanish Fork Peak v.Right Fork, Maple Canyon#	10.3		11.00	4570	10192
Raymond, Mt., v.Hidden Falls & N. ridge	10.4	W	12.55	4210	10241
Lone Peak Cirque v.Jacobs Ladder (from main road)*	10.7	WP	11.08	4620	10340
Timpanogos, Mt., v.Aspen Grove#	11.1	WP	11.40	4850	11750
Dromedary Peak v.Lake Blanche (Exposure)#	11.2	WP	9.40	4800	11107
Monte Cristo Peak v.Lake Blanche#	11.2	WP	10.20	4810	11132
Lone Peak Cirque v.Draper Ridge#	11.4	WP	11.91	4920	10340
Timpanogos, Mt., v.Timpooneke#	11.5	WP	14.00	4390	11750
Twin Peaks v.Broads Fork#	11.5	WP	10.20	5130	11330
Nebo, Mt., South Peak v.Andrews Ridge#	11.6	WP	12.00	5000	11877
Lone Peak v.Jacobs Ladder (from main road)#	13.0	WP	12.67	5530	11253
The Beatout Hike (Red Pine Cyn to Bells Cyn)#	13.5	WP	14.00	4780	11326
Desolation, Lake, v.Deso Trail fm BETH, dn Mill D	13.6	W	17.30	5260	9240
Lone Peak v.Draper Ridge#	13.7	WP	13.51	5830	11253
Wildcat Ridge (Mt. Raymond to Mt. Olympus)#	14.9	WP	14.00	5620	10242

## Abbreviations:

- W – passes through National Forest Wilderness (group limit 14)
- P – requires pre-registration
- \* - Most of trail length determined by measuring wheel
- # - Most of trail length estimated from topographic map
- BCC - Big Cottonwood Canyon
- BETH - Box Elder Trail Head (also called Desolation Trail Head)
- BLTH - Brighton Lakes Trail Head
- BWT - Big Water Trail
- BWTH - Big Water Trail Head
- Deso - Desolation
- GWT - Great Western Trail
- LCC - Little Cottonwood Canyon
- LWT - Little Water Trail
- TH - Trail Head
- v. - via
- WPTH - White Pine Trail Head



## PRESIDENT'S MESSAGE

(con't from page 20)



On behalf of the Club, I'd like to thank Mike Treshow and Jean Francis for having Wick's memorial service at their home. It's nice to know that folks in the Club are kind and generous enough to open their doors to over a hundred and thirty people.



In happier news . . .

Cheryl Soshnik is recovering from her fall in the Grand Canyon after two weeks of hospitalization. Being the stalwart sort that she is, I expect that she'll be back hiking before long.



Dale Green's map is now available, and I hope that everyone in the Club will buy at least one. Besides being a meticulously detailed and very accurate guide, (printed on water proof paper, no less), the sale of the maps will help the Club. (See ad on page 18).

---

## MOUNTAIN BIKING NOTES

This summer we've scheduled a bunch of mountain bike rides—almost every weekend through mid-October, including single-day and weekend trips, and every Tuesday evening (through the summer if interest is strong).

Tuesday night rides will alternate between Salt Lake City and Park City during June and early July, and then will probably move to Park City for cool temperatures. Salt Lake rides will be not-too-difficult (NTD/NTD+)—generally less than 10 miles, less than 700 feet elevation gain, and no significant technical aspects. These rides include the Shoreline/U trail and the Pipeline Trail to Birch Hollow in Millcreek Canyon. Park City rides will be in the MOD-MSD range, including Deer Valley rides and Little Mountain area rides. We'll meet at 6 and leave promptly at 6:15.

## MOUNTAIN BIKING NOTES

(con't from bottom of column 1)

The first Tuesday ride is June 7th in Millcreek Canyon; for subsequent rides please call one of the four Tuesday night leaders (listed in the event descriptions) within a week before the ride to find out the meeting place.

If you're new to mountain biking, please feel free to try the rides. The NTD rides are easiest in distance, altitude gain, and technical difficulty (such as steep hills or steep trail edges). You can rent mountain bikes at several stores in the area, including Wild Rose, Highlander, Rock & Road Cycles, Wasatch Touring, and the U of U Outdoor Program (current students, staff & faculty only).

A helmet is required on all trips. In addition, please bring or arrange to share a tire patch kit, pump, water, and something to munch on. The following can also be very useful: bug repellent, sunscreen, fairly stiff shoes, sunglasses/biking glasses, and biking gloves. Check your brakes before heading for the ride.

If it looks like it's going to rain, call the leader first to see if the ride will go. This is especially important for trail rides, as we want to minimize our impact on the terrain.

We plan to follow the low-impact biking guidelines outlined by the International Mountain Biking Association, including:

1. Ride on open trails; respect trail closures.
2. Avoid skidding or riding on ground that is rain-soaked and easily scarred, and stick to established trails.
3. Yield right of way to other trail users (hikers, equestrians). Uphill bike riders should have right-of-way over downhill riders. (Note: Horses are not used to mountain bikes. When horses are approaching, dismount and let the horses have right of way. Let them see you; try to talk calmly to them and wait off the trail until they pass.)
4. Choose your rides so that they match your ability level, and know your equipment. Be as self-sufficient as possible.

That's it! I'm hoping we'll have a lot of fun this summer, exploring and getting some great exercise.

## FROM THE CLIMBING DIRECTOR

Kyle Williams

By now many of you have no doubt heard of our snow climbing class where 17 participants were abducted by aliens and were subjected to experiments. My ears still hurt from when the female alien kept twisting my ears..... Whoops! I keep getting this article confused with the one I write for the National Enquirer. Sorry! Anyway, we did have to do a quick subject change from ice axe self arrest to up-close wet slab avalanche study, which as I think about it is probably a more important topic!

Every class needs to include the topic of "CONDITIONS". "How is the snow and is it safe to be here?"

Several climbs this spring have had to be postponed because of unsafe conditions and I want to commend the leaders for their wise judgment.

The Avalanche Forecast center has shut down for the summer but the danger still lurks!. When the snowpack gets warm, it slides! That's the deal! If the snow refreezes at night, it's pretty safe until the sun hits it the next day. If you start to sink in to your ankles, it's time to get the hell off of and out from under slopes steeper than 30 degrees. If the slope doesn't refreeze, at night, it could slide at any time of the day or night, which is what was so capably demonstrated to us in our class!

I hope everyone can learn from our experience and be careful. (Incidentally, this can be very deceptive. On the snow class, we had several very experienced snow evaluators yet we still felt OK about being where we were, and still got bit in the butt!). Mountaineering is a great activity with tremendous rewards. It also requires great care and respect for the powerful environment we play in.

---

## FROM THE BOATING DIRECTOR

Gene Jarvis

There has been some questions lately about, what does it take to be a Club boating trip (or any other type of trip) versus a non-club trip? Some of the basic requirements are:

1. That the trip leader is a Club member.
2. That more than half of the participants are Club members.
3. The trip must have a qualified river guide.
4. The trip is sanctioned by the Club's Board (through the individual trip directors).

## FROM THE BOATING DIRECTOR

(con't from bottom of column 1)

Many times there are outside individuals who would like to open a trip up to the WMC to get additional qualified participants. As stated in last month's *Rambler*, there will now be a new section in the *Rambler* for private, non-commercial trips. The individuals will be able to place an ad, without charge, advertising the trip.

We could use some more trips for July. Please take a look at your schedule, pick a date, pick a river, and lead a trip. Give me a call so I can get it in the *Rambler*.

---

## NOTES FROM THE BIKING DIRECTOR

by Frank Luddington

In response to your comments on the "Bikers Survey" which was a very unscientific study done at a social in early May, several changes have been made.

You will notice this month a greatly expanded mountain bike schedule. The expansion is due to the acceptance by Linda Palmer of the position of Mountain Bike Coordinator. Linda will answer your questions regarding mountain bike activities. Call her with your ride suggestions. Also note her column "Mountain Biking Notes" which she will periodically include.

Other changes this month include weekday rides, both mountain and road. Read the writeups carefully. The rides don't always meet where they have traditionally, and the times vary depending on the availability of leaders. Generally, there will be a socially paced road ride (good for mountain bikes also) on Monday; a slightly more strenuous one on Wednesday (again, suitable for either mountain or road), and on Tuesday an offroad excursion just for mountain bikes.

As always, the secret to a successful biking schedule is the leaders. If you have a favorite ride that you would like to reride or lead, call Linda or me. We would be happy to get it on the schedule.

Finally, I am developing a set of guidelines for ride leaders. If you have suggestions as to what some of those guidelines should be, contact me.

# CONSERVATION NEWS

by Jeff Barrell

Imagine the BLM hosting a public hearing on Wild & Scenic rivers in southern Utah. Seems unlikely after the Division of Wildlife Resources just reassigned their southwest director Clair Jensen for supporting Wild and Scenic status for 20 southwestern rivers. Yet on May 15 at the Salt Lake Howard Johnsons, the BLM presented a plan to study, analyze, and recommend rivers in Washington and Kane counties for Wild & Scenic status. Wild and Scenic rivers have federal protection for water flows and prohibit diversion, damming, and discharge of pollutants.

The BLM's objective is to produce a Resource Management Plan (RMP) recommending to Congress which rivers are worthy for Wild & Scenic status. The steps involved are: 1) Inventory, 2) Eligibility, 3) Classification, and 4) Suitability. The BLM has formed a team working out of their Kanab office to gather data, develop criteria, and produce a draft RMP report. Interim protection will be provided for those rivers passing the second phase, although there is no legal protection even through phase four. The BLM is inviting the public to offer inputs, although this was their only Salt Lake meeting until the draft RMP is completed.

A concern of the environmentalists present at the meeting was that wild and scenic criteria has not yet been defined and could be used to exclude most of the rivers in the area

from protection. The explosive growth in the St George area has spawned 8 dam proposals in the Virgin drainage, including the North fork ABOVE the Zion Narrows just outside the Zion National Park boundary. American Rivers (a non-profit lobbying group) has declared the Virgin River as one the top ten most endangered rivers in the US. Another dam proposal exists in Kanab creek, upstream of highway 89. The Escalante drainage has been included in the study and I suspect that rivers in this drainage might be offered protection as a compromise. Meanwhile, present water supplies are not managed well; St George residents have the highest water consumption per capita in the US.

What can we do?? The BLM asked at the meeting for input on rivers or sections of rivers having wild and scenic values. Input must be made early to be effective. SUWA has proposed that individuals "adopt-a-stream" and help form a citizens' proposal to the BLM. Adoption could also involve hiking or floating 'your' stream and documenting new and existing developments along the river (like a neighborhood-watch plan). The BLM contact is Lauren in the Salt Lake office. Contact SUWA at 486-3161. A suggestion at the meeting was for the BLM to setup a bulletin board on the ethernet so the public can monitor progress and offer comments during rather than after the study. Stay tuned for further updates.

---

## FROM THE HIKING DIRECTOR

Thursday Evening hikes have some new scheduling problems this year. Dale Green is no longer leading them and the Forest Service wants us to cut back on the number of people on wilderness hikes. As a consequence, we will no longer alternate between Mill Creek and Cottonwood Canyon, but instead, move around to several different hiking areas. In this next *Rambler* you will see Thu. evening hikes in Mill Creek, Big Cottonwood, Little Cottonwood and City Creek. Please bear with us while we adapt to our new schedule.

A reminder about day hikes: We are trying a new system of scheduling weekend day hikes so that easy and moderate hikes all start from the same place at the same time. This common place is Skyline High, east parking lot which can be found by driving west under I-215 on 3800 South and make a right turn just after the Ward Building into the high school parking lot. The reason we are doing this is to make it easier for hikers to find an alternate hike if a hike into wilderness with a Forest Service limit on group size fills up.

I thought I would mention that a couple of Directors had unfortunate injuries in the past month and we hope that the rest of you won't be as unlucky as we have been. Ski Director Cheryl Soshnik fell 50' during a private Grand Canyon backpack trip and broke several bones, seriously injuring her left arm.

Yours truly, Hiking Director Donn Seeley did a header while on a hiking/biking trip to the Book Cliffs. Both Cheryl and I warn that our electronic mail is being typed in one handed for at least the next several weeks. And our frequent contributions to the *Rambler* are going to become less frequent and more concise.

The next hiking committee meeting is scheduled for 6/22 at 7:00 pm at 187 J St. for a barbecue at 5pm. If I have both hands available, it will be Indonesian style. I will supply barbecuable items; please bring a salad or a dessert and something to drink. If you want to lead a hike or out of town hiking trip, this is your best chance to get it scheduled the way you want it. All Club members are welcome to attend Hiking Committee Meetings.

# THE SNOW SCHOOL SAGA OR "LANCHE"—IT'S THE REAL THING!

by Carol Masheter

April 17, 1994. Today, 19 us from the Wasatch Mountain Club (WMC) were conducting Snow School (ice-axe self-arrest practice and other safety measures) in Stairs Gulch on the northeast side of Storm Mountain about 0.75 mile from the road on approximately 25 to 30-degree slopes. Many of us commented on the recent warm weather and the need to get out of the canyon before noon, before the snow got too soft. Snow School had been routine, even boring, since the snow was too mushy to get up enough speed during our practice falls for realistic self-arrests. Still, we gleefully (and literally!) threw ourselves into the task of making chutes for our practice falls and arrests. We removed our packs (something I NEVER do, except this day) to slide faster. Walt hiked further up canyon looking for harder, faster snow. In a backwards, head-first practice fall, I bit my lip, drawing the only blood of the day, through clumsiness rather than danger.

As I was joking about my lip and trying to staunch the bleeding, I looked up canyon to admire the view. I thought I saw a tiny figure (Walt?) scrambling up steep snow, then disappear. A few minutes later, at 10:25am, I glanced up canyon again to see a soundless cloud of exploding snow up canyon at the skyline. At first I watched in delight and wonder. An avalanche! This was the first time I had seen one this close in action! As though in slow motion, it silently oozed toward us on the steep slopes, disappeared on the less steep ones, and reappeared again. Too far away; it will never reach us. Then Bill Thompson said in a matter of fact voice, "we probably should get people out of its path." We all scrambled up loose, rotten rock on the steep northeastern side of the canyon.

From an unsteady perch, I looked down at my pack, perhaps 100 yards away in the 'lanche's path. Do I have time to retrieve it? Perhaps, but what if others try to retrieve theirs too, and someone gets caught? Better not try. Yet, the 'lanche's progress up canyon seemed so slow, it seemed dignified, peaceful, tame. Kyle Williams said almost casually, "it will take our packs; they're history." Then the 'lanche arrived. Graceful pythons swelled into a white lava flow, at times chunks of solid snow in fluid motion, at other times snow boulders 3-4 feet in diameter, gracefully tumbling past. The "snow lava" was surprisingly quiet. Most of the time it issued a low roar, like a huge surly mutt growling under its breath. Occasionally, it hissed like

receding waves at the beach, when it scoured the gulch's sides and walls. The rocks hummed under my feet.

We scrambled higher on the loose steep rock as the 'lanche rose like a flood. I could have reached out and touched it. I was tempted to stroke it, calm it, like an agitated stallion I could soothe into submission. Someone joked, "Why don't you just want to jump on one of those big blocks of snow and ride it?" For a second, that seemed like fun, no more dangerous than a carnival ride, and I pictured myself leaping onto the 'lanche's back, while my friends cheered. Yet I knew better than to take such foolish liberties. Though it probably was moving no faster than a fit runner out for a brisk jog, I could not have outrun it through the gulch's snow and rocks. That relentless torrent of snow would have crushed me like a cheap toy.

Where is Walt, I wailed to myself. I thought I had seen him last near where I first spotted the 'lanche breaking up canyon. Had he been caught in it? Then, I nearly fainted with horror; something black that looked like Walt's body in his black ski bibs suddenly appeared in the snow torrent oozing past us. Time froze while I stared in dull horror, until I realized that the 'lanche was scouring through the snow bed to the ground. I was looking a patch at dark earth and boulders, not Walt's broken body! Relief! Still, where is he? He still could be in this mess! Could we find him and dig him out? Would he be alive? Not likely. Wet slides are slow, but they are heavy, and they kill. I stared at river of snow boulders flowing past with deadly grace and power.

We waited. My feet felt unsteady on the steep, loose rock so close to the flowing snow river, yet I was afraid to move, afraid the loose rock would slide and dump me into the snow torrent. Finally, about 20 minutes after I first spotted it, the avalanche stopped. We agreed out loud to wait. "Sets up like concrete when it stops," someone said, remembering lessons learned in an avalanche course.

Then we spotted Walt scrambling toward us on the other rocky side of the gulch, a sea of avalanche debris between us and him. Again, I almost passed out, this time from relief! When he saw us clinging to rotten rock just above the 'lanche, he quipped, "I thought this was snow school, not a climbing class!" Kyle wise-cracked back, "How did you start this thing, Walt?"

## The Saga Continues

Walt later told me that he had seen it break near him as he was down climbing on rock. As he scrambled back up, the 'lanche was suddenly nearly upon him and tried to tear away his ice axe, which he had dropped to free his hands in his mad scramble for life and was dangling from its tether round his waist. He told me that if he had down climbed more quickly or had been too slow scrambling back up the rock, the avalanche would have caught him. He thought we all had been swept away, and he would have to dig out 18 bodies. So, the relief was mutual when we all saw each other alive and uninjured.

It was not over yet. There was the task of getting out of the canyon safely. We worked out a system of two sentinels who watched up canyon for further avalanche activity, while the others crossed the avalanche debris one by one to a relatively safe spot across canyon. When about 1/3 of our group had crossed, a new 'lanche started just above them where they could not see it. We shouted at them to get under rock outcroppings. Jeff kept scrambling in the new 'lanche's path. We shouted louder, "Get the hell outa there! Get under the rocks!"

Then we held our breaths. The second 'lanche stopped. We breathed. The rest of us crossed, then we all moved down canyon carefully, as quickly as possible, recrossing the debris from one relatively safe spot to the next, like a giant accordian. Moving through the jumble of snow boulders was tougher than I expected. I fell several times. All the landmarks were unrecognizable. The 'lanche had carved new, steep, icy banks along the gulch's sides and had covered our trail with a jumble of chunky avalanche debris perhaps 50 feet deep in some places. Someone spotted what looked like a pack, no, a rock, no, it IS a pack. Two people stayed behind to dig it out with their ice axes. I hoped they would be safe.

After a tense "snow whack" down, we stopped below the avalanche's toe to look back and stare at the wall of jumbled blocks of snow that loomed over our heads. Bill Thompson later estimated using maps that the avalanche was over mile long and stopped about 1/4 mile from the road. Everyone was safe. Two packs were recovered; mine was one of them. I must have done something right. Not drinking at the wedding Walt and I had attended the night before, perhaps? My

pack was dirty and wet, but the only casualty was a muffin, squashed flat as a pancake. Even my glasses rode the 'lanche and emerged undamaged, a small miracle. Back at the cars, we shared what food had been recovered, arranged transport for people who lost their car keys in the 'lanche, organized a lost-gear list and who should phone whom. I offered to call the avalanche forecasters to report the 'lanche and the search and rescue people to let them know that we all were safe. We had met a search-and-rescue group at the trail head that morning; they too were out for some snow practice. I was concerned that they might think that some of us were caught in the 'lanche.

We all are very lucky Jose's! No one panicked, no one was hurt or killed, and we all functioned calmly and smoothly as a team. At least two of our party, Bill Thompson and Carrie Clark, had been partially buried in avalanches during previous misadventures. Both kept their cool and contributed to the group's safe exit. Foremost, I learned: the mountains can be seductively beautiful and peaceful especially on a sunny, warm day, but never turn your back! Always be aware of what is going on, especially up canyon.

---

I believe the count was 17, not 19. (For comparison, the North American single accident fatality record is something like 12, accomplished in the Father's Day search collapse on Mt. Rainer quite a few years ago.)

I checked a map after we got out. The whole of Stairs Gulch is a bit over a mile and a half long. My guess is that we were about 3/4th of a mile in. From the map, it looks like the total slide path was a bit over a mile long and ended a quarter mile or so from the road.

The biggest surprise of the day was how slowly the whole thing moved—something on the order of a moderate jog. I subsequently talked to someone else who was close to a wet slide and he said the same thing. There is probably a lesson here. Slow moving wet snow, even when a long way away, can eventually get to where you are!

from Bill

(Photo of 2nd avalanche day after on page 32)

## A BIT OF HISTORY—KESSLER PEAK

by Charles Keller

Kessler Peak, located between Cardiff and Mineral Forks, south of Big Cottonwood Creek, has a commanding view of most of the central Wasatch, as well as the more distant Uintah, Ouri and Stansbury Mountains. One of the impressive features of Kessler is the precipitous nature of its flanks: there is no easy way to the top. There is an unsubstantiated rumor that the name Kessler is an Indian word meaning 'Steep Mountain,' Don't believe it! The source of its name lies just below the peak to the northeast. There one can see a flat, variously known as Reynolds, Taggart and Mill D Flat, and a drainage on the north side of the canyon known as Mill D North Fork. At the mouth of that fork once stood a saw mill known as Mill D.

In 1864 Brigham Young and five others men formed the Big Cottonwood Lumber Company to exploit the timber resources there. One of the founders was a man with considerable experience in the design, construction and operation of mills; he was given the responsibility of locating and building the Big Cottonwood saw mills. It was he who located the company's fourth mill, Mill D, and supervised its construction. We know he often explored the surrounding terrain to make sure an ample supply of timber was available. In the case of Mill D, one of the big timber reservoirs was found on the north slopes of Kessler Peak. The man who did all this was Frederick Kesler. The evidence that the peak was named after him is circumstantial, but he was the only Kesler to be found in Utah Territory at the time, he was prominent in the canyon, and he was a man who drew respect and recognition from others. After settling west of SLC, a peak in the Oquirrh was named after him. We also find that when Nelson Wheeler Whipple located and built a saw mill on Cardiff Fork stream at the mouth of the fork in 1869, the name Kesler Peak was in use, (Whipple mentions it in his journal). And when the mining boom began, the name was used in claims as early as October 1870. The fact that we spell the name 'Kessler' today, while Kesler spelled it with only one 's' is of little significance.

About 1869 the prospectors discovered Kessler Peak; some of the first major discoveries in Big Cottonwood

Canyon were the Sailor Jack, Provo and Homeward Bound on the ridge south of the peak, near the interface between the quartzite and dolomite formations. Soon Kessler Peak was a hotbed of activity; in fact, so many claims were filed in that immediate area that for a short time the Argenta Mining District was formed, it being a part of the Big Cottonwood Mining District. The three early mines noted above were combined with several other claims to form the Deseret Silver Mining Company and were known as the Carbonate group. About the end of 1878 the group was purchased by New York capitalists and renamed the Kessler Mining Company. Access to the mines was described in an article in the Engineering and Mining Journal in January 1879. It said, "There are two trails to the mine. One leads from Argenta up the precipitous sides of the mountain, a distance of three miles. The upper trail is three miles above Argenta, starting from the south fork of Big Cottonwood [Cardiff Fork].. The first trail has been mostly unknown. Its upper portion has been used when Kessler Peak was approached from Mineral Fork via the Silver Mountain mine, but attempts to follow the trail to the north, toward Argenta, resulted in total frustration and steep bushwhacks. It has only been in the past year that the full length of the trail has been found and can be followed. It is an interesting trail in that it displays evidence of the nature of its early use. According to the cited article, ore was "sacked at the mine and trailed in raw hides to the foot of the mountain." The combination of the pounding of horse or mule hooves and the dragging of the heavy laden raw hides caused the trail to be deeply cut, especially in the steeper sections. Rocks in the trail were moved to the side to avoid tearing the hides, so in places the trail is bordered by piles of stones. The trail is 'precipitous' and in the Kessler Peak tradition, steep, but now can be followed with relative ease and safety. Only one place, below the west portal of the Carbonate mine, a switchback was washed out during the early 1980's flood. It can be bypassed with a little scrambling.

This 115 year old trail from Argenta will be introduced to the WMC in a hike scheduled for Sunday, July 3, 1994. See hiking schedule for details.

# TRIP TALKS

## LOWER PIPELINE HIKE

May 1

by Betty Cluff

A group of intrepid hikers met with trip leader Duane Call for a newcomer's hike on the lower pipeline trail. In spite of the threatening clouds and the start of drizzling weather, no one backed out. Before we got started Dale Green arrived to speak to us about the new topographic map put out by the WMC.

After describing the hike and giving us instructions, Duane discussed the excellent example Dale Green has always given hikers by picking up trash and litter along the trail, stressing the importance of everyone following this example. He also stress the necessity of everyone staying together during the hike.

Heading up Rattlesnake Gulch the trail became a little slippery but nothing that couldn't be handled without too much difficulty. By the time we reached the pipe line trail it was necessary to don rain gear now that it was coming down quite steadily. Nevertheless we continued on stopping from time to time while Duane pointed out things of interest such as Indian Paint Brush in bloom, numerous fossils, and the remains of an old mine.

Most of the time we were enshrouded by fog, totally obscuring the view except when occasionally it would drift away just enough to get a glimpse of the valley below and the surrounding mountain peaks. Once we were awed by the startling contrast when a big hole appeared in the clouds and it seemed like we were looking through a tunnel at the view below.

We reached the end of the trail in good time and decided to go on up the ridge always and then agreed it would be fun to go straight down the side of the mountain and intersect the trails. We enjoyed doing a little bushwhacking on the way down. By then the rain stopped and we were able to make the descent quite easily. Fortunately the ground was soft allowing for good footing. On the way we stopped from time to time for Duane to give us bits of knowledge and information, not the least of which was how to tell the difference between elk and moose droppings.

It was another fun hike with a group of friendly, jovial people. Participating with me: Ed Weinstein, Robert Graves, James Nelson, Paul Lovesen, Beth and Jody Osmund, Felecia Kulsic, Martin Clemans, Jane Weaver and Ken Engstrom.

## OUTDOOR ROLLERBLADING/

## ROLLERSKATING SOCIAL

May 7, 1994

by Stacy Yamasaki

The first WMC 'blading tour of the season was a complete success (defined as lots of smiles with no bruises or broken bones!) Led by Dave Vance dressed in his Golden Eagle jersey, complete with hockey stick, the fearless five, ranging in skill from a new skater on up, tore up the pavement at the U of U. (Actually there was a lot of construction.) After a few warm up laps at the lower end of campus, the crew gracefully glided up the concrete occasionally doing a 360 or two. After touring the grounds, the skaters ended up at the Huntsman center where there was a political convention. As usual, there were hundreds of signs, banners, etc. Ever wonder why they have more signs at these things than people? (Does the candidate with the most signs win?) The show was stolen by a canine friend of a skater who single handedly (pawedly?) ran around the campus with 5 balloons, which could not keep up with her! The decent was slower or faster than the ascent depending on the skater but all made it safely to the starting point. The crew consisted of Kathy Liuzzi, Mark Megeath, Dave Vance, Stacy Yamasaki, and Angie Zoulk.



*Aaron Jones, Jaynee Levy, Chris Baierschmidt, Steve Carr in Mystery Canyon. Photo by Donn Seeley*



# RETURN OF THE SON OF MYSTERY CANYON (CAR CAMP)

April 16 and 17

by Chris Baerschmidt

Going on a "Donn Seeley" WMC trip had always been among my list of priorities. Over the past two years since reactivating my membership, I had heard alluring tales regarding the adventures devised by "Dawn-to-Dusk-Donn", so it was to my delight when I discovered his mid-April trip to San Rafael Swell coincided with a weekend free from my normal domestic and occupational charges.

It was not with mild trepidation that I accepted the "Donn Seeley" challenge. I had heard stories of his trips through desert rock converging into a maze of canyons, cliffs, and gorges. I had heard stories of the remote destinations, the long treks across dry overland, and of the Seeley philosophy to explore where no Club trip had gone before.

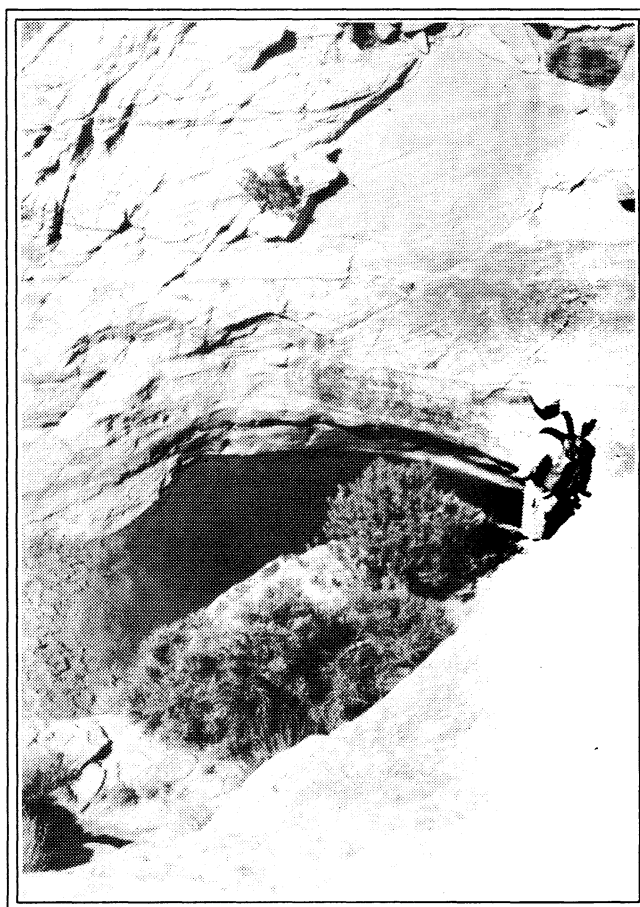
Nights prior to this trip I slept mindful of images depicting an "Indiana Jones" journey through a canyon he dubbed the "Mystery". By day I visualized roped descents of pug-like canyon slopes, then dropping into hypothermic pools of the blackest depth. I am a suburban mother of two, I told myself. I drive a sedan. I teach English. Am I ready for this undoubtedly wild troupe of voyagers?

Friday arrived for our departure from the city. I picked up my companion Stephen Carr and we shopped for sundry grocery items. That night, under the stars, I slept fitfully with my sleeping bag pulled up over my head. When morning came, we gathered our packs and took off towards the trail.

According to the *Rambler*, our attempt was "to penetrate the mysterious slot canyon by entering from the top and scrambling through the tightest, deepest narrows to reach the exit in the middle". During earlier ventures to the same location, Donn and his previous trekkers had on separate occasions entered from the top and middle but never made it from one point—the top—clear through to the other—the middle.

This was to be the "Donn Seeley" quest of that mystery. The exploration and conquest through eons of geological history. And we did it! In less than six hours, a bedraggled "mom type" along with four veteran hikers, including one who once made a living out of writing trail guides to South Africa, emerged from the sedimentary rock layers to a Seeley traverse of desert overland.

To say the hike was wonderful is an understatement; to say we were intrepid is trite; to say what we saw has been witnessed by few may be pretentious. But I don't want to



*Steve Carr gazes into the pool in Cistern Canyon.*

*Photo by Donn Seeley*

spoil it for anyone. So let me just say, "Go sign up for the same Donn Seeley mystery trip, now solved for five, makes the calendar. It's a journey you won't want to miss."

And the next day, Sunday, Aaron Jones woke early, later telling us of the wild mustangs he had seen at dawn. We drank coffee, dismantled camp, and headed down a portion of Cistern Canyon. Here, we occasionally stopped to rest, feasting on candied orange slices while Donn and South African trailblazer Jaynee Levy consulted topos for exploratory routes through the canyon and back to our vehicles.

This weekend was the "Donn Seeley" trip of my musings. The adventure where domestic and occupational duties slumbered while a mother pretended she was company to "Indiana Jones" of the western desert. I think we all need that sometimes.



# ENSIGN PEAK HIKE

23 April

by Brenda Prosser

My husband and I, living in the Avenues for a short time, have wondered what was on the other side of City Creek Canyon. We were to find out!. Saturday promised a cold front coming in, making a perfect morning for the hike we took to the north rim of the canyon along with 23 other curious individuals who were also looking forward to this particular hike (which is not usually offered by the Club). We ascended 1000' in about 3 easy miles on a dirt road which allowed us all to socialize to the hilt, which everyone was happy to do. Glorious views of the city and environs mingled with high country scenery. We saw some lovely white primroses at the start, some blue forget-me-nots, larkspur, and red Indian paintbrush mixed among the large yellow daisy type flowers. There being no trees, the cloud cover kept the heat at bay. When the wind picked up, we were chasing hats and clustering closer to hear our leader, Richard Zeamer talk about the "Ensign" of Ensign Peak. Ensign Peak came about halfway past mid-loop and we were glad to stop to listen because the trail down was very steep and not easy to negotiate.

In 1934 the Mormons built a monument to commemorate Ensign Peak. All of the 110 Mormon stakes and 31 missions at the time were invited to send an 8 by 12 inch stone; more than 100 arrived to be embedded in the cement monument which is 18.47 feet high. Each one is recorded in the metal box inside the monument according to information I gleaned from the LDS Historical Library. "Kolob" is mentioned there, which is the Mormon word for "closest to the throne of God". This hill is where

Brigham Young and seven leaders of the First Company stood on July 26, 1847, two days after they arrived and looked down in the valley and thought out plans for the city. (Officially the city survey was made from the SE corner of Temple Square.) If you stand to the right of the monument you look right down Main Street. It's a great Salt Lake City overlook; the view is much different than from the top of Mt. Olympus (a more traditional Wasatch hike). There's an argument about what the "ensign" in Ensign Peak is about. It could denote Brigham Young's dream to put an ensign there, meaning to unfold a banner representing the gathering of the nations as the Kingdom of god; or, some later Mormons think it meant the United States. Fascinating! And judging from my efforts to find out, not too many Mormons know or care much about the whole thing.

Anyway, we hikers were critical of how far the darned large fancy houses are being built up the hillside. Long time resident hikers told of their earlier days when that neighborhood used to be a destination for teenage date parking and above it on the hill, a place where motorcycles used to soar. (These were first hand experiences—ah-hem, but I won't mention names.) We were lucky to have with us Duane Call who told us good stories of his earlier days here. This should become a standard Club hike. If you have people visiting from elsewhere it's a nice and not so strenuous place to hike. Follow the *Rambler's* directions for parking—park along the side of the street. Hike out on the dirt road beyond the end of Dorchester Drive.



*Ensign Peak Monument, a good place to stop and listen to Richard Zeamer relate the history of founding of the Salt Lake Valley by the Mormons in 1847. Photo by Richard Zeamer*

**FIRST ANNUAL CHILI COOK-OFF BIG  
SUCCESS!!  
JULY 31, 1993**

Submitted by Linda Kosky

Reserve July 30, 1994 for a fun time at our **SECOND ANNUAL CHILI COOK-OFF**. Read the following article, this will give you an idea of what you don't want to miss.

July 31, 1993. Beautiful day! Beautiful weather! The Lodge full of wonderful people! Delicious food! Great band! Some of the best line dancers, two steppers, swingers and rock and rollers in the valley!

And.....twelve (12) pots of the best chili this side of the Pecos! The chili was HOT, not so HOT, mild, with beans, without beans, and vegetarian. After "the judging", and awarding of prizes, the crowd was turned loose to sample as many of the varieties as they wanted. Most pots went home empty.

Each entrant signed in their culinary creations, (all except the owner of POT #12), was assigned a number and waited for the decision from our panel of three very distinguished and very qualified judges. (One had lived in Texas once upon a time. One was married to a lady of Hispanic origins once upon a time and one had lived in Texas twice.)

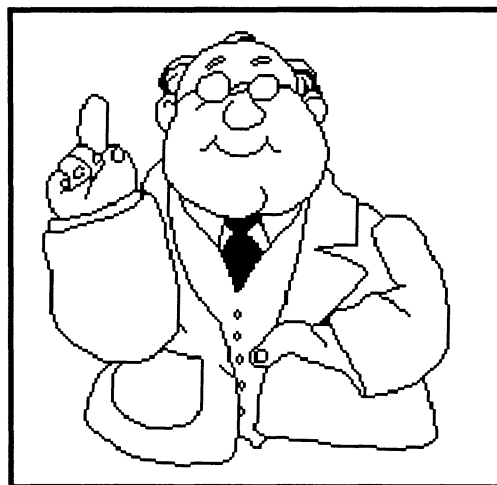
It wasn't easy choosing the winners from so many worthy and deserving entries. But after much deliberation, tasting and mouth rinsing the following winners were announced:

Third PlacePot: (a Tie)	# 1 - Leslie Mullins Pot # 9 - V. Kelsey
Second Place:	Pot # 2 - Christel Sysak
First Place:	Pot # 12 - The Pot With No Name

After much persuading and dangling the prize in his face, the owner of Pot #12 sheepishly came forward. The Chili King of 1993 is none other than **ZIG SONDELSKI!!**

Thanks to the other 8 winners: Dolores Case, Marlana Kosky, Felecia Kulsic, Dale Rose, Phyllis Anderson, Harry Lichtenstein, Linda Kosky and Karol Welling.

Call Linda (943-1871) if you want a copy of the winning recipe.

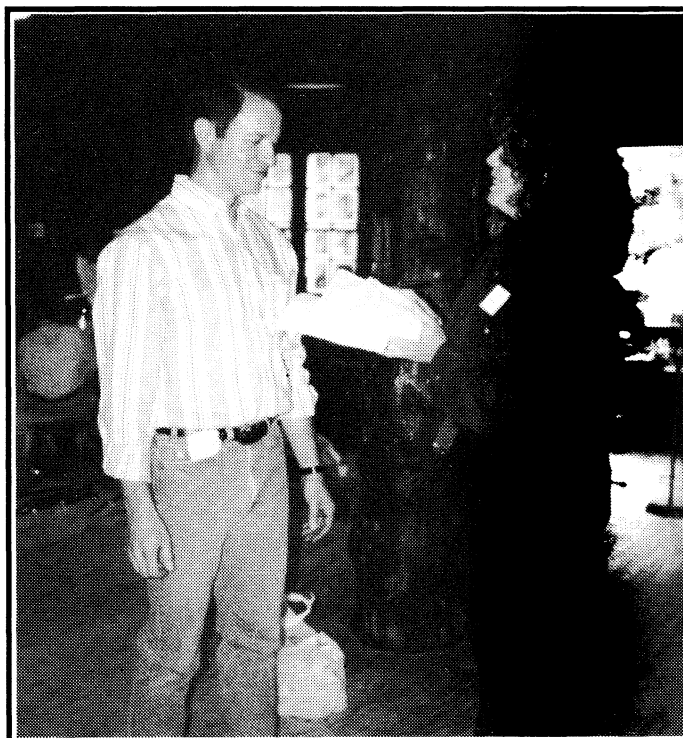


**WANTED: Fun loving, energetic people to help plan and/or host WMC socials. Come with your ideas to a strategy session**

**Tuesday June 7 at 7:00  
light refreshments at 6:30**

**Terry's place—Wood Hollow Condos  
2435 Elizabeth #5 (see event listing for  
directions)**

**Call Sam (277-1789 Terry (467-8027) or  
Mary ann (278-4587)**



**AND the winner is.....none other than Zig Sondelski for his  
Pot with no Name. Awarding the prize is Linda Kosky  
Photo by Earl Cook**

## WHITE MOUNTAIN'S \$10,000,000 SECRET

(excerpts taken from Argosy, March 1966, by Steve Wilson)

by Monty Young

I have always been interested in hidden treasures, this one in particular. It seems that in 1914 a man known as Freddie Crystal rode his bicycle into Kanab, Utah to ask an Oscar Robinson, a prominent rancher, for a grub stake. He told Robinson the story of Montezuma's treasure: then worth ten million dollars (1914 dollars). It consisted of gold dust, gold bars, silver ornaments, shields, gold plates, and pendants. According to various eminent historians, the treasure had been smuggled out of Mexico, hidden possibly in Utah when Cortez and his conquistadors threw Montezuma, the Aztec king, in chains. On Crystal's return from Mexico, he saw some Aztec petroglyphs. He felt these would lead him to find the treasure.

Freddie searched a canyon 20 miles northwest of Kanab in the Johnson Canyon area, finding petroglyphs which matched the very ones he found in Mexico. Although he searched diligently, he found nothing. He departed, returning to Mexico. Four years later, returning to this area, he showed Robinson a map which he claimed to be 400 years old, one he found in a Mexican monastery. After months of searching, he found the place where the map said the treasure was supposed to be, a place called "White Mountain" located in the Johnson Canyon. Freddie and two cowboys found some steps, about 100 feet long, up the bluff to a lookout of a tunnel, 16 feet by 14 feet. It was plugged by blue limestone blocks. (The nearest know limestone deposit being 30 miles away.)

The job was too big for Freddie and his companions so they went back to Kanab for help. The City Counsel and most people of Kanab believed Freddie had found Montezuma's treasure so put strict censorship on out going news. Most of the town's men worked on the site, leaving only a few guards in and around Kanab. Here they established a large tent city at the mountain's base.

During the two years of work, they encountered many booby-traps left by the Aztecs. Boulders crashed to the floor while they dug slowing the progress. In time, the men grew tired and abandoned the site. Some felt the limestone blocks were a decoy, that the treasure lay in an arroyo below which now was covered by the rock from their diggings. Disappointed Freddie disappeared, possibly going back to Mexico, never to be seen again.

Today you can still see the evidence of their diggings, the steps, the limestone blocks—those blocks possibly put there by an ancient people who went to a great deal of labor to protect their treasure. One has to wonder, perhaps Freddie and the town did not dig far enough. Or, could old Montezuma simply use the blocks for a decoy?

Still! Who knows? Maybe that treasure is there for someone willing to go the extra mile!!

### Save Utah Wildlife, Wild Rivers & Wildlands



#### Join the UTAH WILDERNESS ASSOCIATION Campaign TO SAVE WILD UTAH

You'll Receive:

- ✧ Regular Issue Updates, Alerts & Bi-Monthly Newsletter
- ✧ Notice of Public Hearings, Forums & Educational Programs
- ✧ Invitations to the Annual Rendezvous, Socials & River Trips

Since 1979, UWA has been Utah's Statewide Environmental Organization.

Enlist Yourself, Friends, Family and Allies to Support and Experience Utah's Natural Wild!

Special Introductory Membership  
**Sign up for only \$10 (Save \$15)**

Name \_\_\_\_\_

Street \_\_\_\_\_

City, State, Zip, Phone \_\_\_\_\_

☐ Membership Fee \$10    ☐ Additional Donation \$ \_\_\_\_\_

All donations are tax deductible

Mail to: UWA - 455 East 400 South #306, Salt Lake City, UT 84111 (801-359-1337)

## WMC LODGE AVAILABLE FOR SPRING AND SUMMER BOOKINGS

**Plan now to hold your family reunion, office party or workshop, wedding, or other special occasion at the WMC LODGE. Now accepting reservations for spring and summer use. User rates are as follows:**

**24 hour rate, noon to noon: \$225**  
**Half day rate, Mon-Thurs: \$150**  
**(8am-5pm or 6pm-midnite)**

**We often have to turn away people because they didn't reserve early enough, so make those plans now! Call Rich Osborne (1-647-0205) for more information.**

\*\*\*\*\*  
\*\*\*\*\*

## OCTOBER SAILING TRIP - ST. MARTIN TO ANTIGUA, CARIBBEAN SEA

This years sailing trip will be to the Leeward Islands between St. Martin and Antigua, including St. Kitts, St. Barthelmy, Nevis, Montserrat, Anguilla, and possibly others. These islands, a delightful combination of French, African, and English cultures, blend harmoniously on lush islands of forests, mountains, tropical flowers, exotic birds, beautiful beaches, excellent snorkeling and diving. The trip will include: more sailing and land exploration, opportunities for snorkeling and some SCUBA diving.

It is not necessary to have sailing experience to participate, only a positive attitude and willingness to get involved with your share of on-board chores. We average 5 hours per day under sail. Once at anchor, substantial time is spent on shore playing the tourist; hiking, exploring, sight-seeing, shopping, etc. Typically we enjoy restauranting about half of the evenings.

A deposit of \$300.00 is required to reserve a space. Deposits are refundable until June 15, after that there is a \$25.00 cancellation fee. The only thing that makes a person eligible for the trip is a deposit. However, a deposit does not guarantee participation. A final participant list will be firmed up in July. The trip is already half full and the remaining spaces will fill quickly. It may be possible to add another boat later to accommodate more people if we have an experienced skipper. The initial organizational meeting took place May 22. At that time exact trip dates and other details were firmed up. Call Vince Desimone for more info. Send checks c/o Vince Desimone, P.O. Box 680111, Park City, UT 84068-0111.

Cost for the trip is expected to be about \$75.00 per day for all group expenses plus air fare which we hope to get at a reduced rate.



*"It's not over 'til it's over!", Carol Masheter sighs as another avalanche rumbles in the west fork of Stairs Gulch the day after her narrow escape with 18 other Club members. Article on page 24.  
Photo by Bert Baltzer*

# CONTRA DANCE

WHERE: Mountain Club Lodge

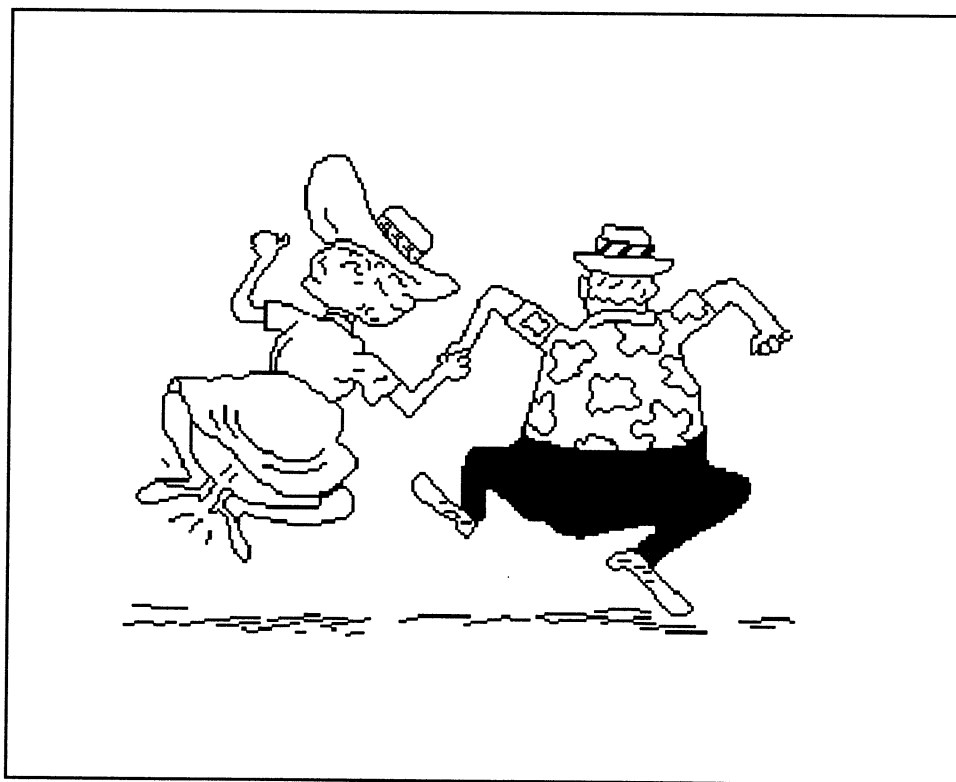
WHEN: Saturday, June 25th

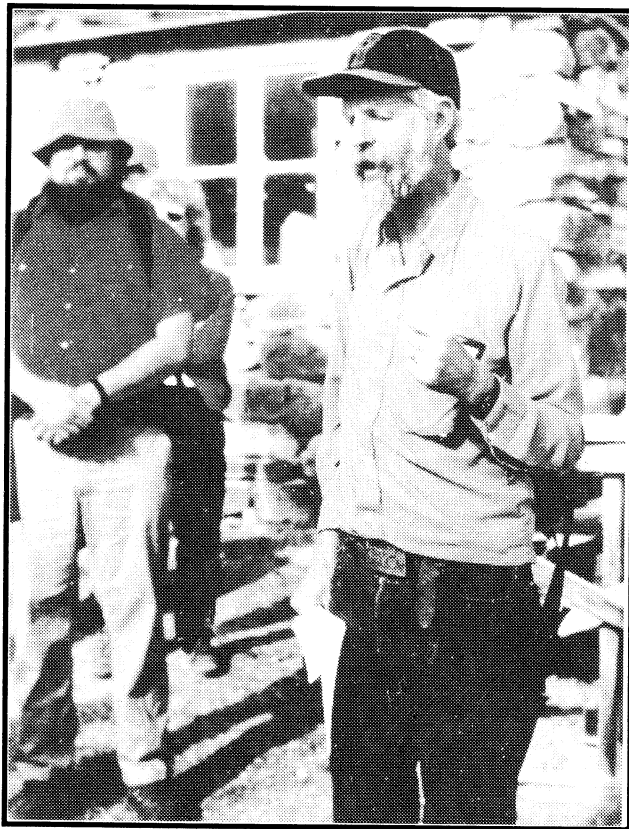
TIME: Potluck Dinner -- 6 pm  
Contra Dancing -- 8 pm

COVER FEE: \$5

QUESTIONS: Call Terry (467-8027), MaryAnn (467-6711) or  
Sam (277-1789)

*Instruction will be provided--no partners needed*





—Wick Miller in his many hats and activities—

## In memory of Wick Miller's early death and the fragility of life.

### *Fragile Threads*

*The spools of life unwind*

*Some are weak  
Some are strong  
Some are lost  
Some are found  
Some are short  
Some are long*

*Slender threads unwind*

*Their moments  
All too few  
Too quick to pass—  
Always new  
Not meant to last  
Sad but true  
Not ours to grasp*

*Unwinding rolls the spools*

*Unnoticed flight  
The seconds fly  
Day to night  
Month to year  
Their birth—Their right  
To live one life-*

*Who unwinds each threaded spool?*

*Holds the key  
Knows the time  
Picks the way  
Makes the sign  
Cuts the line  
Selects their end*

*Jean Frances May 12, 1994*



## NOTICE!

The *Rambler* cannot accept any ad that is inconsistent with the purposes of the WMC or offends the sensibilities of club members. Send your ad (with a check enclosed if it is not a used sports equipment) before the 13th of the month to Sue deVall, 11730 South 700 West, Draper UT 84020

or call Sue at 572-3294 for information.

## Classified Ads Policy

Members may place classified ads for used sports equipment free of charge. Other classified ads require a \$5.00 donation to the WMC for up to 20 words with \$.20 per word over 20. Words of 2 letters or less will not count as a word.

**Telemark Boots:** Merrill Super Comps Wms size 8 1/2, excellent cond. \$300

**Wetsuit:** Long sleeves & legs, excellent for any watersport, sz med, worn 5 times, \$75.

**Hiking Boots:** Raichel leather boots never worn, wms 7 1/2, \$60.

**Skis:** TVA-Toute Nieve 195 cm, no bindings, \$50. For any of these items, call Lisa (278-8101).

---

**For Rent:** River equipment—raft, canoe, kayak, river bags, air tight boxes. Call Bruce Beck (359-0220) after 6 pm.

---

**Sleeping Bag:** REI Polarguard, 30° rated, like new \$40. (572-3294)

---

**Ski Boots:** Nordica sz 7 perfect condition, \$65.

**Multi-exerciser:** rower, press, curl, etc., like new, \$65.

**Bicycle:** Centurian LeMans 12 speed, gel saddle, 25", excel. cond., \$150 AND a 20" Girls bike for \$15.00. Call Dan Karchner on any of these items (571-3704).

---

**Kayak Trip:** Join Chuck Howisey (364-4820) for a July sea kayak trip along the Inside Passage of Alaska. This is his second trip to the small town of Petersburg in southeast Alaska for a kayak tour. From a base camp, the group will go on day paddles: you don't need lots of skills or be in perfect shape to enjoy this. This is a small group experience which includes a floatplane ride out to the base camp. Added attractions: wildlife and the hump-back whale. Give him a call if interested.

**Real Estate:** Thinking about buying or selling Real Estate? Why not call the Boating Director? Gene Jarvis Coldwell Banker Premier (568-9000 Office or 944-8619 Home).

**Nepal-Everest and Goyko Lakes Trek-**  
10/26/94 - 11/16/94 Rating: Demanding  
Price: \$2800.00 (subject to change)  
All services on the trek include: meals, camping and kitchen equipment, all porters, permit fees, guide, sherpa staff, fuel, insurance and transfer.  
Other services include: Hotel in Bangkok, Katmandu, half a day sightseeing trip in Bangkok, airfare from Salt Lake City to Bangkok, Katmandu, Lukla. For more information call Christel Sysak at 943-0316 or 277-9988.



## FROM THE MEMBERSHIP

### DIRECTOR

Linda Kosky

#### Membership Renewals

Membership renewals for 1994 are well underway on a month to month basis.

Many of you have called because you haven't received your renewal application and are concerned that you need to renew! Many of you have asked, "How do I know when I should renew?" Look for the date in the upper right hand corner of the mailing label on the *Rambler*. Your renewal is due by the last day of the month shown. You will be mailed a renewal application and activity survey the first week of that month. If you do not receive your application by the 15th of the "renewing month", please call the Club office at 363-7150 and let us know.

Since this is a new process, we're sending out reminder notices and making calls before your name is removed from the membership files. (HINT: You'll know you haven't renewed, but should have, when your *Rambler* doesn't arrive, unless you've moved and we don't have your new address, of course).

We're continually working out the "bugs" and looking for new and better ways to serve the needs of our members. Thank you for your ideas and patience as we work through this process.

#### Welcome to New Members:

##### April

Patricia & Steve Horton	Susan Lynn
Tim & Gabrielle Garb	Linda Metke
David T. Minix	Steve Glaser
Carol Berryman	Pat Lorenzo
Steve Townsend	Pam Silvey
Pat Wymore	Cheryl Hogan
Beth Ann Herrmann	Larry Simmons
Kip and Bill Wallace	Tim Sewell
Lucinda & Herold Kindred	

##### May

Merylin Lovett	Hugh Hansel
Shawna Hein	Richard Anderson
Susan Barney	Bill Barber
Geradette Banaszak	Frank Bernard
Wynde Klauer	Jeanne MacKenzie
Kay Sylvester	Roger Lester
Alan & Diane Kartchner	

## SCENIC CREATION PRODUCTIONS

### Easy Listening Scenic Videos

**Value \$19.95 for \$9.95 only**

Autumn Colors	Needles area
Natural Bridges Area	Monument Valley
Bridal Veil Falls	Winter Waters
Mirror Lake Area	The Needles
San Rafael Swell	Goblin Valley
Little Wild Horse Canyon	Zion Narrows
Calf Creek Falls	Idaho Falls
Arches National Park	Mesa Falls
Bryce Canyon National Park	Cave Falls

Order by telephone

801-969-8635

Order 3 or more and receive one for free  
Shipping and handling only \$1.50 each



*Kyle Williams on Temple Peak in Idaho. Photo by ?*



PLEASE COMPLETE BOTH SIDES

# WASATCH MOUNTAIN CLUB

APPLICATION FOR NEW MEMBERS/REINSTATEMENT FOR PREVIOUS MEMBERS

RAMBLER SUBSCRIPTION FORM

DO NOT USE THIS FORM TO RENEW YOUR MEMBERSHIP

Please read carefully and fill out completely.

APPLICANT(S) NAME(S) \_\_\_\_\_

ADDRESS \_\_\_\_\_ CITY \_\_\_\_\_ ST \_\_\_\_\_ ZIP \_\_\_\_\_

HOME PHONE \_\_\_\_\_ DAY PHONE \_\_\_\_\_ BIRTH DATE \_\_\_\_\_

I HEREBY APPLY FOR:

\_\_\_\_ NEW MEMBERSHIP      \_\_\_\_ STUDENT (30 years or younger)

\_\_\_\_ REINSTATEMENT      \_\_\_\_ COUPLE

I wish to receive the RAMBLER (The WMC Publication) YES \_\_\_\_ NO \_\_\_\_

**Subscription price is NOT deductible from the dues.**

Enclosed is \$ \_\_\_\_\_ for one year's dues and application fee (Mar 1, 19\_\_ to Feb 28, 19\_\_).

**\*\* (CHECKS ONLY) Make checks payable to Wasatch Mountain Club\*\***

Remit: \$20.00 for student membership (\$15.00 dues and \$5.00 application fee)

\$30.00 for single membership (\$25.00 dues and \$5.00 application fee)

\$40.00 for couple membership (\$35.00 dues and \$5.00 application fee)

YOU MUST COMPLETE TWO CLUB ACTIVITIES FOR MEMBERSHIP CONSIDERATION  
THE ACTIVITY DATES MUST HAVE BEEN WITHIN ONE YEAR OF THE APPLICATION

QUALIFYING ACTIVITY	DATE	SIGNATURE OF RECOMMENDING LEADER
---------------------	------	----------------------------------

1. _____	_____	_____
----------	-------	-------

2. _____	_____	_____
----------	-------	-------

I agree to abide by all the rules and regulations of the WMC. I am 18 years of age or older. I understand that outdoor activities involve risk, and that I am responsible for determining the suitability of my ability and equipment in advance of participating in any WMC activity. I release and discharge the WMC agents and representatives from all claims for property and personal injury sustained as a result of participation in WMC activities.

APPLICANT'S SIGNATURE \_\_\_\_\_

(signature required)

I found out about the WMC from \_\_\_\_\_

MAIL APPLICATION AND CHECK TO: MEMBERSHIP DIRECTOR  
Wasatch Mountain Club  
888 South 200 East Suite 207  
Salt Lake City, UT 84111-4220

LEAVE BLANK

RECEIPT # \_\_\_\_\_ DATE RECEIVED \_\_\_\_\_ AMOUNT RECEIVED \_\_\_\_\_

(OR CHECK#) \_\_\_\_\_

BOARD APPROVAL DATE \_\_\_\_\_

# ACTIVITY SURVEY

## WOULD YOU LIKE TO LEAD?

All of the Club's activity leaders are volunteers. You can be a leader too—just check off the activities you want to lead, and we'll give you a call. Help your Club and have fun too!

- Hiking:**    ☐ easy day hike    ☐ moderate day hike    ☐ advanced day hike    ☐ car camp  
                  ☐ backback
- Boating:**    ☐ trip leader    ☐ instruction    ☐ equipment    ☐ sailing
- Skiing:**    ☐ NTD tour    ☐ MOD tour    ☐ MSD tour    ☐ out of town trip
- Climbing:**    ☐ Wasatch climb    ☐ out of town trip    ☐ winter mountaineering
- Bicycling:**    ☐ road bike tour    ☐ mountain bike tour    ☐ camping tour
- Other outings:**    ☐ snowshoe tour    ☐ caving    ☐ other

## WOULD YOU LIKE TO SUPPORT?

The Club also depends on volunteers for all the rest of its work. Some of this work is critical to the day-to-day functioning of the Club; some of it is important to our community; some of it is just fun. You can let us know how you'll help by checking off activities below.

- Conservation:**    ☐ air and water quality issues    ☐ trailhead access    ☐ wilderness  
                  ☐ telephone tree    ☐ trail clearing
- Socials:**    ☐ social host    ☐ Party assistance    ☐ lodge host
- Rambler:**    ☐ word processing    ☐ mailing    ☐ advertising    ☐ computer support
- Lodge:**    ☐ general lodge repair    ☐ skilled lodge work
- Information:**    ☐ public relations    ☐ membership help    ☐ recruiting    ☐ instruction

Would you like to participate on an activities committee? Which one?

---

Is there a special trip or activity you would like to lead?

---

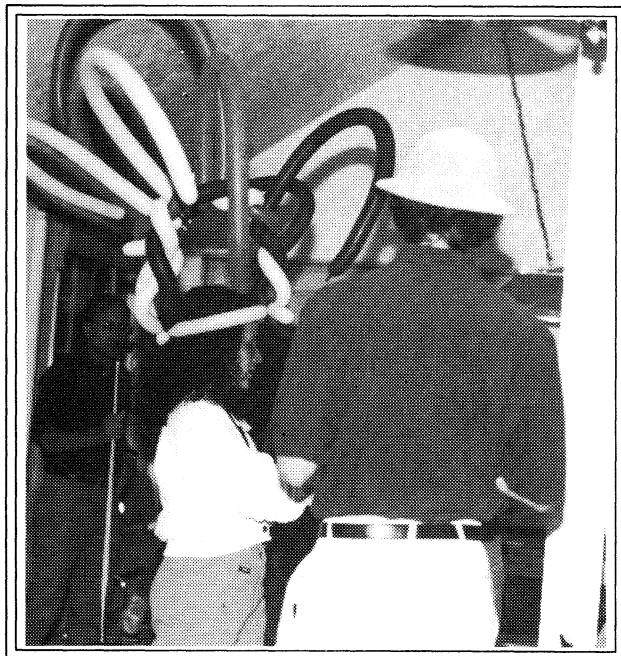
---

---

What phone numbers can we use to reach you?

---

*And the Mad Hatter's winner is...The Balloon Lady, who's disguise is so perfect that we are unable to identify her.*



Photos submitted by Holly Rordame and  
Felecia Kulsic



*Madame Butterfly disguised as Linda Kosky, alias  
The Line Dancing Queen, alias Membership Direc-  
tor, alias, alias, etc.*

## WASATCH MOUNTAIN CLUB

Membership applicants must participate in at least two Club outdoor or service activities, verified by the signatures of approval from the activity leaders. Yearly dues are \$25.00 single, \$35.00 couple. A \$5.00 initiation/reinstatement fee is charged.

**1994-95**

### GOVERNING BOARD

#### President and Directors

President	Jerry Hatch	467-7186
Vice Pres./Hiking	Donn Seeley	595-1747
Secretary	Nance Allen	486-0546
Treasurer	Larene Miller	278-8758
Membership	Linda Kosky	943-1871
Boating	Gene Jarvis	944-8619
Conservation	John Veranth	278-5826
	Monty Young	255-8392
Entertainment	Mary Ann Losee	278-4587
	Sam Kievit	277-1789
Lodge	Rich Osborne	647-0205
	Bob Myers	485-9209
Lodge User Rep	Rich Osborne	647-0205
Mountaineering	Kyle Williams	567-9072
Publications	Jean Frances	582-0803
	Jim Zinanti	967-8578
Ski Touring	Brian Barkey	583-1205
	Cheryl Soshnik	649-9008
Bicycling	Frank Luddington	277-4564
Information (PR)	Michael Treshow	582-0803

#### Trustees

Alexis Kelner	359-5387	Term Exp 95
Mike Budig	328-4512	Term Exp 96
Karin Caldwell	942-6065	Term Exp 97
Leslie Woods	484-2338	Term Exp 98
O'dell Peterson	355-7216	Emeritus
Dale Green	277-6417	Emeritus

### COORDINATORS

Canoeing		
Trails Issues	Chris Biltoft	364-5729
Kayaking	Janis Huber	486-2345
	Joergen Pilz	539-6685
Sailing	Vince Desimone	1-649-6805
Rafting	Janet Embry	322-4326
Boating Equipment	Gene Jarvis	944-8619
Boating Instruction	Neal Reiland	942-1938
Snowshoeing	Knick Knickerbocker	364-6521
Mountain Biking	Linda Palmer	484-3959
Volleyball	Ross Martin	364-4006
Adopt-A-Highway	Frank Atwood	299-8264
Commercial Ads	Knick Knickerbocker	364-6521
Rambler Mailing	Christine Allred	261-8183

### OFFICE HOURS

Carla Western 363-7150 9 am-2 pm Mon and Wed

June 1994

**WASATCH MOUNTAIN CLUB  
888 SOUTH 200 EAST, SUITE 207  
SALT LAKE CITY, UT 84111-4220**

**Suite 207**

**SECOND CLASS  
POSTAGE PAID  
SALT LAKE CITY, UT**