



Seasons Greetings

May peace and happiness
be with you always.

The Rambler

December 1995

Wasatch Mountain Club

Diamond Jubilee Year

Managing Editors
Jim Zinanti, Reda Herriott, and Dr. Mau

ADVERTISING	Reda Herriott
CLASSIFIED ADS	Sue deVall
COVER LOGO	Knick Knickerbocker
MAILING	Harry Kimbrough
PRODUCTION	Jim Zinanti, Reda Herriott, and Dr. Mau

The *Rambler* (USPS 053-410) is published monthly by The WASATCH MOUNTAIN CLUB, Inc., 888 S., 200 E., suite. 207, Salt Lake City, UT 84111-4220. Telephone 363-7150. Subscription rates of \$12.00 per year are paid for by membership dues only. Second class postage paid at Salt Lake City, Utah.

POSTMASTER: Send address changes to *The Rambler*, Membership Director, 888 S, 200 E., Salt Lake City, UT 84111-4220. CHANGE OF ADDRESS: This publication is not forwarded by the Post Office.

The right is reserved to edit all contributions and advertisements and to reject those that may harm the sensibilities of WMC members or defame the WMC.

Copyright 1995, Wasatch Mountain Club

Office Hours: 9:00 am - 1:00 pm Wednesday
363-7150
Address: 888 S., 200 E., Suite. 207
Salt Lake City, UT 84111-4220
Office Asst.: Jean Frances

PROSPECTIVE MEMBER INFORMATION

Applicants must attend two official WMC activities other than socials. Activities are listed in *THE RAMBLER* which is the official publication of the Wasatch Mountain Club, published by and for its members. Prospective members may receive *THE RAMBLER* for two months by writing the Membership Director at the above address and enclosing a check for \$5.00 payable to the Wasatch Mountain Club. (There is a \$10.00 charge for returned checks.) An application form may be found in the center of *THE RAMBLER*. Ask the activity leader to sign your form after completing the activity.

MEMBERS: If you have moved, please call the WMC office or send your new address to the Membership Director. Allow 45 days for address changes. If you did not receive your *RAMBLER*, contact the Membership Director to make sure the WMC has your correct address. Replacement copies are available, while they last, at the WMC office during office hours.

TO SUBMIT AN ARTICLE or PHOTOGRAPH: Articles should be on diskette, MS/DOS or Macintosh format, and preferably in Microsoft Word or WordPerfect form. Label the diskette with your name and identify what file(s) are submissions. Enclose a hard copy in case your diskette cannot be read. Mail submissions to Publication Director at the office address, or hand deliver them to the WMC office. Leave hand deliveries in the **Blue** box outside the door. The deadline is 6:00 pm on the 15th of the month. Photos of all kinds, B&W and color prints, and slides. Make sure that the photo is labeled with the photographer, date, and names of people. Unless a stamped, self-addressed envelope is provided, returned submissions will be available in the **Red** box outside the office door about 1 week after publication.

The Rambler - December 1995 Vol 72 No. 12

Contents

Cover Photo Caption	2
Bulletin Board	4
REI Clinics	4
Tennis Network	4
Board Meeting Summary	4
Classy Ads	5
Sky Calendar	5
Wasatch Mountain Club Activities	6
From the Ski Touring Director	12
From the Boating Director	12
From the Snowshoeing Coordinator	13
Governing Board	14
Voice Mail	14
WMC on World Wide Web	14
Commercial Advertising Rates	14
WMC Banquet Invitation	15
Coming Attractions	16
WMC BOARD OPENINGS	17
Governing Board Nominations	17
Trip Talks	18
Circle All Peak	18
Twin Lakes Pass	18
Steam Mill Yurt Trip	18
Playground Bully	19
Audrey Kelly Ski Clinic	21
Robert Frohboes Avalanche Safety Clinic	23
Snow Shoe Ratings	24
75 Years and Counting	26
Membership Application	29

WMC Purpose

(Article II of the WMC Constitution)

The purpose shall be to promote the physical and spiritual well being of its members and others by outdoor activities: to unite the energy, interests and knowledge of students, explorers and lovers of the mountains, deserts and rivers of Utah; to collect and disseminate information regarding the Rocky Mountains in behalf of science, literature and art; to explore and picture the scenic wonders of this and surrounding states; and to foster awareness of our natural areas including their plants, animal and bird life.

Cover Photo

Red Rocks Spirit--Can you Spot the Bird House in the Wreath?
Torrey Utah - 11/25/95.

Wind Can't Run This Stop Sign!



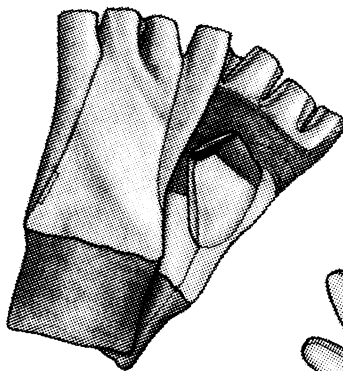
**GLACIER
WINDSTOPPER™ BY**



MANZELLA®

Glacier is a durable, soft, high quality Italian microfiber polyester fleece- the best available! WindStopper™ is sandwiched between two layers of Glacier fleece, for the ultimate combination of comfort, performance, and durability.

WindStopper™ is Gore's most advanced windproof/breathable material and is proven to prevent convective heat loss due to wind chill. Virtually no wind gets through WindStopper, but remarkably it's the most breathable of all windproof materials, allowing the body to regulate temperature and maintain comfort. Simply, you stay warm without perspiration build-up!



Fingerless

Glacier WindStopper with stretch fleece cuffs and Clarino palm patch. Unisex S, M, L.

29.99



Backcountry Glove

Glacier WindStopper high performance model features gauntlet cuff and stretch fleece inner storm cuff. Pittards leather palm and fingers. Unisex S, M, L.

39.95



Leather Palm Glove

Combines Glacier WindStopper with supple, durable Pittards leather palms and fingers. Flat seaming provides ultimate comfort. Stretch fleece cuffs. Unisex S, M, L.

34.95



Glove/Mitt

Converts from full mitten to a half-finger glove. Velcro secures mitten flap and thumb back. Made of Glacier WindStopper with Clarino palm patch and stretch fleece cuffs. Unisex S, M, L.

39.95

Choose from 8 Glove Styles Headwear Also Available



Kirkham's
outdoor products



3125 South State Street (801) 486-4161 Open: Monday - Friday 9:30 to 9:00 Saturday to 7:00

BULLETIN BOARD

WMC Board Meeting Summary

November 1, 1995

by Camille Pierce, secretary

The board voted to accept Tony Ackerman's proposal to access the Internet and add a web page about the club to disseminate information.

We voted to separate out monies and re-establish the Audrey Kelly and Robert Froboese funds for ski and avalanche clinics.

Purchase of an answering machine was approved in lieu of continuing the Rellis Phone System. The Nominations Banquet is scheduled 1/20/96 at the downtown Olympus Hotel.

The next General Membership Meeting is set for February 8, 1996. Jean Francis, our office assistant, will be in the office Wednesdays instead of Mondays. We now have 1177 members in the Wasatch Mountain Club.

WMC OFFICIAL HIKING MAPS

Copies of the **official** WMC Map, "**Hiking The Wasatch**" are available to WMC members at a discount. The map retails for \$10 but members can obtain copies for \$8.50 including sales tax. The Club also profits from these sales. The maps are available at the WMC office during office hours and on many WMC activities.

WMC LODGE AVAILABLE FOR RENTAL USE

The WMC Lodge can be rented on a half or full day basis. Full day rate is \$225. Contact Rich Osborne (1-801-647-0205) for information.

TENNIS NETWORK

We are a group of WMC members that play tennis regularly. Our levels range from 2.5 - 4.0. If you are interested in playing during the cold winter months, please contact Jeri at 561-3777.

Permits for Boating Meeting

with the US Forest Service and the Utah Whitewater Club

Dec. 7, 1995 at REI in Salt Lake 6 till 9 pm

Topic: Forest Service is wanting input from boaters about plans for requiring permits in Alpine Canyon. Alan Gavere 486-1476

REI CLINICS

These clinics are held at the Salt Lake City REI store (3285 E., 3300 S.). Unless mentioned otherwise they are free of charge and are held Tuesdays at 7:00 pm in the upstairs clinic room.

Utah's Backcountry Experience

Tuesday, December 5, 7 p.m.. Join Rick Wyatt who will present a slide show and lead a discussion on the local backcountry skiing opportunities. Rick has been a year round mountain guide for over 20 years and currently works with EXUM Mountain Adventures as a guide. He is also a forecaster with the American Avalanche Institute.

Avalanche Awareness I

Tuesday, December 12, 7 p.m. Utah Avalanche Forecast Center will present a video and slide show you won't want to miss. Learn the basics of winter route finding and avalanche safety. Seating is limited.

Classy Ads:

Notice: *The Rambler* cannot accept any ad that is inconsistent with the purposes of the WMC or offends the sensibilities of Club members. Send your ad, with enclosed payment, if required, to **Sue DeVall**, 11730 S., 700 W., Draper, UT 84020. Advertising rates are \$5.00 for up to 20 words and 20¢ for each additional word. WMC members may place **free** ads for used recreational gear or for private non-commercial and not-for-profit activities.

Climbing Skins Re-Grooming Service: Using Ascension's Glue Renewed System. Call 970-625-5295 Cost is \$25.00 plus \$3.00 Shipping and Handling.

For Sale: Auto Rack, Thule for gutters, with one ski rack, locks for both, \$65.00 Call 484-4702.

Information Please: I am going to spend 2-3 weeks in Alaska, August 11 through 25 summer 96. Would entertain ideas for a small group to boat/hike AK. If you have had a great trip to Alaska, please let me know. If you have had a bad experience with a place or outfitter, please let me know. Give me a call at 967-3864...Dave Minix. Hope to hear from you.

SKY CALENDAR

for December

MOON

First Quarter	Dec 28	Jan 27	Feb 25
Full Moon	Dec 06	Jan 05	Feb 04
Last Quarter	Dec 14	Jan 13	Feb 12
New Moon	Dec 21	Jan 20	Feb 18

MOONRISE for 40° N Latitude, 112° W.
Longitude, Flat Horizon

Saturday	Mtn Daylight Time
Dec 02	2:30 PM
Dec 09	7:30 PM
Dec 16	1:15 AM
Dec 23	8:45 PM
Dec 30	1:00 PM
Jan 06	6:15 PM
Jan 14	1:00 AM
Jan 20	7:17 AM
Jan 27	11:45 AM
Feb 03	5:00 PM

SOURCE: The Astronomical Almanac for 1995

PLANETS

VENUS is slowly brightening in the evening sky, while Mars and Jupiter are lost in the glare of the setting sun. **SATURN** is low in the South in the evening.

Contributed by Ben Everitt

Thinking of Remodeling?

Myers & Mahak
CONSTRUCTION Inc.

Members of "The Wasatch Mountain Club"

485-9209

**FULL SERVICE REMODELING
DESIGN / BUILD
RESIDENTIAL & COMMERCIAL
KITCHENS & BATHROOMS**

Robert Myers 485-9209

Vali Mahak 582-7711

3336 South Pioneer Street • Salt Lake City

WASATCH MOUNTAIN CLUB ACTIVITIES

Only activities approved by the appropriate WMC director can be listed in the Club activities section of *The Rambler*. Send your proposed activity for approval to the hiking, boating, skiing, etc., director for inclusion in their activity schedule. Those activities sent directly to *The Rambler* without approval will not be published.

*** Participation in any WMC activity can be dangerous. It is **your** responsibility to evaluate your own preparedness and ability to safely participate in any activity.

*** On ski tours requiring avalanche transceivers, be advised that this season, only beacons compatible with the new international frequency standard (457 kHz) will be accepted on WMC ski tours.

Dec 2 Sat

SKI TOUR: DOG LAKE. (NTD) Meet Gary Lindstrom (532-1259) at the Butler Elementary School parking lot at 9am. Sturdy backcountry skiing equipment and skins are advisable on this tour.

Dec 2 Sat

SKI TOUR: NORWAY FLATS, UIN-TAS. (MOD) Clary Cardwell is going to the backside of our mountains. Call him (487-1456) to find out where to meet. You'll need skins for this tour.

Dec 2 Sat

SKI TOUR: SILVER FORK. (NTD) The wonderful and beautiful Barbara Jacobson (943-3715) is doing her annual visit to this lovely meadow. Meet at the Butler Elementary School parking lot at 9am. If your lucky, Barbara will show you her famous moose call!

Dec 2 Sat

SKI TOUR: TOM'S HILL. (MOD) John Gleave (359-9613) will take some lucky folks to the wonderful and easily accessible powder on Tom's hill. Meet the Butler Elementary School parking lot at 9am. On this and all MOD tours in the Wasatch, avalanche transceivers, shovels and skins are required.

Dec 2 Sat

SNOWSHOE: DAYS FORK (NTD) Holly Smith (272-5358) will lead an easy snowshoe tour up Days Fork in Big Cottonwood Canyon. Meet Holly at Butler Elementary School (2700 East 7000 South) at 9:30 am.

Dec 2 Sat

SOCIAL: Only 12 days til the service project. Have you called Kris or Liz with your gift donation for the nursing home project on Dec 14th?

Dec 3 Sun

SKI TOUR: LEADER CHOICE. (MOD) Today our leader is the one and only Princess of the Mountains, Leslie Woods (484-2338) Meet at the Butler Elementary School parking lot at 9am. Avalanche transceivers, shovels and skins are required. Court favor with this wonderful lady and she may let you make the first powder turns!

Dec 3 Sun

SKI TOUR: SCOTT'S PASS. (NTD) Mohammed Abdalla (466-9016) is leading folks into the woods by Scott's pass. If you can tell him who 'Scott' is, he'll let you break trail! Meet at the Butler Elementary School parking lot at 9am. Sturdy boots, backcountry skis and skins are recommended on this trip.

Dec 3 Sun

SNOWSHOE: GREENS BASIN (NTD) Tom Willis (485-0370) will lead an easy snowshoe tour into Greens Basin up Big Cottonwood Canyon. Meet Tom at Butler Elementary School (2700 East 7000 South) at 9:30 am.

Dec 6 Wed

WMC BOARD MEETING: Any member interested in attending is welcome. We will meet at the home of Reda and Jim Zinanti at 7:00 pm. The address is 2656 S. Chadwick St. (1410 E.) We will dine beforehand, beginning at 6:00. Bring an appetizer or dessert. The hosts will serve dinner. Please RSVP if you plan to attend the dinner.

Dec 6 Wed

CLIMBING- WASATCH FRONT GYM- BEGINNERS WELCOME! Join Herb Hayashi any time after 5:30 for an evening of indoor climbing at 427 W 9160 S. Cost is discounted for WMC members! \$7.00 per visit (instead of \$8 reg.), or monthly memberships are available. If you would like to learn how to climb, call Herb (278-2620) and he will be glad to help you get started. WMC members also get a discount on rental gear! NOTE- Since this is a professionally monitored, controlled environment, helmets are not required for this activity.

Dec 7 Thu

SOCIAL: MOON-LIGHT SKI AND SNOWSHOE TOUR (NTD-) Full moon cross-country skiing and snowshoeing on the Bonneville Golf Course. (Beginning level) Meet at the entrance to the golf course on Conner --one block east of Foothill and just south of Sunnyside: approx 1000 South and 2050 East -- at 6:30 pm. Bring a flashlight for equipment adjustments. Dogs and kids with responsible adults are ok. Call prior, if there is minimal snow. Afterward, we'll retire to the fine pastries, hot drinks, and other goodies of The Bakery or other local eating establishment. Contact Frank (533-9219) with any questions.

Dec 9 Sat

SKI TOUR: BEAVER CREEK, UIN-TAS. (NTD) Meet Barb Petty (583-3134) at 9am at the Parleys K-mart for an easier tour in some really pretty country. Light ski touring boots and poles are OK for this trip. Barb might change the destination depending on the snow conditions.

Dec 9 Sat

SKI TOUR: LEADERS CHOICE. (MOD) Our resident ski instructor and sand dune expert is leading the way to some excellent powder spots in the Wasatch. Meet Edgar Webster (583-0703) at the Butler Elementary School parking lot at 9am. Avalanche transceivers, shovels and skins are required. Make note that compatibility with the new transceiver frequency is required on all WMC tours this year.

Dec 9 Sat

SKI TOUR: LEADERS CHOICE. (MSD) Call Will McCarvill (943-5520) to find out which hill he plans to conquer this time. This is a call to register trip. Avalanche transceivers, shovels and skins are required.

Dec 9 Sat

SKI TOUR: REYNOLDS PEAK. (MOD) Tom "Telemark" Walsh (969-5842) the Maestro of the Mountain says that this mountain offers some of the best yo-yo skiing in the Wasatch. Meet him at the Butler Elementary School parking lot at 9am. Avalanche transceivers, shovels and skins are required.

Dec 9 Sat

SKI TOUR: SCOTT'S PASS. (NTD) Meet Barb Richards (484-8097) at the Butler Elementary School parking lot at 9am. This popular tour takes you through some mellow woods, but bring some sturdy backcountry ski equipment and skins to make the going easier.

Dec 9 Sat

SNOWSHOE: SCOTTS PASS OR LEADERS CHOICE (NTD+) Russ Pack (572-5653) will lead a snowshoe tour to Scotts Pass in Big Cottonwood Canyon, snow conditions permitting. Meet Russ at Butler Elementary School (2700 East 7000 South) at 9:30 am.

Dec 10 Sun

SKI TOUR: DESOLATION LAKE. (NTD+) Tom Silberstorf (255-2784) will meet interested folks at the Butler Elementary School parking lot at 9am. Avalanche transceivers and shovels are not needed but bring them along if you have them. Sturdy backcountry skis and boots are recommended as are skins.

Dec 10 Sun

SKI TOUR: LEADERS CHOICE. (MSD) This early in the season, the location of MSD tours depends very much on snow conditions. Call Chris Atkin (645-9665) to register for this trip and to find out where he's going and other trip particulars. Avalanche transceivers, shovels and skins are required.

Dec 10 Sun

SKI TOUR: MONTREAL HILL. (MOD) Meet Pat Kottcamp (467-7231) at parking lot #4 (along Ft. Union Blvd) at 9am. This tour goes to some wonderful powder shots up Cardiff fork. Avalanche transceivers, shovels and skins are required.

Dec 10 Sun

SKI TOUR: SILVER FORK TO THE MINE. (NTD) Peter Hansen and Bee Lufkin (583-8249) will lead folks to this lovely spot in the Wasatch. Meet them at the Butler Elementary School parking lot at 9am.

Dec 10 Sun

SKI TOUR: TRACK LESSON AT MT. DELL COURSE. Bob Myers, a very fast track skier will show folks the new track at Mt. Dell. Call him (466-3292) to register.

Dec 10 Sun

SKI TOUR: MUELLER PARK: (NTD) This is one for those who like read the Sunday paper in front of the fire, eat a nice leisurely breakfast or just like to sleep in late. Meet your fellow lazy skier and doggy aficionado Dauphinee Randall (299-1005) and her 3 noble pooches at the Cathedral of St. Mark's (on the corner of 1st south and 2nd east in SLC) at 12:30 p.m. to car pool up to Bountiful. Yes, this means all doggies are welcome! If you have any more questions, call Dauphinee. Just don't call her too early!

Dec 10 Sun

SNOWSHOE: DOG LAKE (NTD) Loraine Lovell (272-4601) will lead an easy snowshoe tour to Dog Lake up Big Cottonwood Canyon. Meet Loraine at Butler Elementary School (2700 East 7000 South) at 9:30 am. Parking at the Spruces is not an option this winter so Loraine will be doing an exploratory to get to the Dog Lake trail from parking lower down the canyon.

Dec 13 Wed

CLIMBING- WASATCH FRONT GYM- BEGINNERS WELCOME! Join Herb Hayashi any time after 5:30 for an evening of indoor climbing at 427 W 9160 S. Cost is discounted for WMC members! \$7.00 per visit (instead of \$8 reg.), or monthly memberships are available. If you would like to learn how to climb, call Herb (278-2620) and he will be glad to help you get started. WMC members also get a discount on rental gear! NOTE- Since this is a professionally monitored, controlled environment, helmets are not required for this activity.

Dec 13 Wed

SOCIAL: MOVIE NIGHT Tonight's Movie Night will be a no-host evening. Meet at the Sugarhouse Pier 49 San Francisco Sourdough Pizza Company (2227 Highland Drive) at 6:00 p.m. to eat before catching a movie at the Cinemark Movies 10 (movies start between 7-7:30 p.m.). Call Ken (466-2825) with any questions. Co-listed with the Sierra Singles.

Dec 14 Thu

SOCIAL: SERVICE PROJECT - NURSING HOME DECORATING/CAROLING The Wasatch Mountain Club is "adopting" a local Nursing Home as its Holiday Season Service Project. Come join us and discover the true spirit of the Holidays by sharing your energy and spirit with others to brighten up the Holiday Season. Plan on meeting at the Alta Care Center at 4035 South 500 East at 6:30 p.m. We will decorate a part of the Care Center, then will sing carols to the residents. Twenty-six of the residents are without any family support - please plan on donating a small gift as a part of our effort (see page 25 of The Rambler for a list of suggested gifts). If you have any questions, contact Kris Taylor (568-0398) or Liz Cordova (484-3740). Plan on joining us and "making a difference"!

Dec 15 Fri

SOCIAL: LINE DANCE INSTRUCTION & COUNTRY WESTERN DANCING Linda Kosky will teach from 7 - 8 pm; band starts at 8:30 at one of our favorite dance halls (the WESTERNER, 3360 South Redwood Road). Linda will be teaching the third Friday of each month. Cover charge \$3/person. Call Linda (943-1871) for details.

Dec 15 Fri

SOCIAL: SING-A-LONG (NTD!!) Join Frank Bernard (533-9219) at 7 pm for this "beginning of the season" session of folk and joke singing. Bring your voice and/or guitar to Lori Ball's home at 1261 Yale Ave, (one-half block west of 1300 East) and we'll entertain ourselves in this 100% audience participation event. Bring your own beverages and snacks - an enthusiastic attitude is the only other requirement! If you have questions, call Frank. If you get lost or need directions, call Lori at 583-8133.

Dec 16 Sat

SKI TOUR: CATHERINE PASS (NTD+) with leader Michael Budig (328-4512), meet at 9 am, parking lot #2, Skins and shovels are required if conditions warrant.

Dec 16 Sat

SKI TOUR: INSTRUCTIONAL (NTD+/MOD) The annual WMC Telemark clinic! Learn to ski bottomless powder with grace and ease, Wow friends and relatives with your 3-pin aerial stunts! Find out why your turns always become "Cranial Christi's". This year the head instructor is none other than the world famous (or infamous?) Edgar Webster! This guy actually knows what to do with Telemark skis and can tell you how too! The plan is to buy a 1/2 day pass on the baby lifts at Alta (for a nominal fee) and then to follow Edgar's lead. Meet at the Butler Elementary school at 12 noon to car pool up to Alta and meet Edgar at the Alta ticket window at 1 pm. Please call Edgar (583-0703) to register and get more info. and especially if you would like to help instruct.

Dec 16 Sat

SKI TOUR: MONTE CRISTO AREA (NTD) with leader Brian Barkey (1-801-394-6047). Join Brain into undiscovered (by the WMC) terrain up in Ogden Valley. This is a doggie special through gentle rolling hills. You'll need sturdy boots and snowshoes or skis (no track skis!!). No beacons required, but skins are necessary unless you know how to use wax. Fish scales are OK, but you may have trouble getting up some hills. Caution! Killer porcupines have been sighted in this area! Call Brian to register. SNOWSHOERS ARE WELCOME TOO !!!!

Dec 16 Sat

ICE CLIMBING- PROVO CANYON-TOP ROPING AND BEGINNERS PRACTICE Join Larry Coulter (485-9623) in prayer for frigid temperatures. We will set up practice routes and Larry will demonstrate the monkey hang. (NOTE: no animals will be harmed in this demonstration.) Call to register. AN-OTHER NOTE- Helmets are required for WMC climbing activities.

Dec 16 Sat

SNOWSHOE: DESOLATION LAKE (MOD) Norm Pobanz (266-3703) will lead a moderate snowshoe tour to Desolation Lake up Big Cottonwood Canyon. Meet Norm at Butler Elementary School (2700 East 7000 South) at 9:30 am.

Dec 16 Sat

SOCIAL: HOLIDAY CELEBRATION AND POTLUCK Linda Kosky is providing the atmosphere, Yuletide fire, and Christmas Cheer (a piano will be available for caroling - others are encouraged to bring their own instruments!) for a WMC Holiday Celebration and Potluck. Join Linda and your WMC friends at 6:30 p.m. - bring a potluck dish to share (enough for 6). Hot chocolate and coffee will be provided - plan on bringing other beverages of your choice. Linda has requested that you RSVP to her (943-1871) by noon of the day of the party if you are planning to attend, so she can have sufficient eating utensils on hand. Cover charge: \$2.00 members, \$4.00 non-members. Attire is casual - come prepared to celebrate the season!

Dec 17 Sun

SNOWSHOE: WHITE FIR PASS (NTD) Mark Jones (486-5354) will lead an easy snowshoe tour to White Fir Pass above the Terraces Picnic grounds in Millcreek Canyon. Meet Mark at Skyline High's east parking lot at 10:00 am.

Dec 17 Sun

SKI TOUR: GREENS BASIN (NTD) with leader Lynn Christensen (292-7299). Meet at 9 am at Butler Elementary School. Call Lynn if you have questions on this NTD Tour.

Dec 17 Sun

SKI TOUR-SNOWSHOE MIXER: UINTAS - BEAVER CREEK TRAIL (NTD) and surrounding loops. Curtis Camp will lead this tour, meeting at 9 am Parleys Way K-Mart. Curtis says dogs and equipped kids can come but call for info at 963-1471. The trail itself is not good for snowshoeing, but there are some great side-loops off the Beaver Creek for snowshoes. Curtis is looking for folks to help lead, so if you can help him, give Curtis a call.

Dec 17 Sun

SKI TOUR: WASATCH MOUNTAINS LEADERS CHOICE (MSD) leader Walter Haas. (534-1262) Beacons, shovels and skins required. Give Walt a call for meeting time and location.

Dec 20 Wed

CLIMBING- WASATCH FRONT GYM- BEGINNERS WELCOME! Join Herb Hayashi any time after 5:30 for an evening of indoor climbing at 427 W 9160 S. Cost is discounted for WMC members! \$7.00 per visit (instead of \$8 reg.), or monthly memberships are available. If you would like to learn how to climb, call Herb (278-2620) and he will be glad to help you get started. WMC members also get a discount on rental gear! NOTE- Since this is a professionally monitored, controlled environment, helmets are not required for this activity.

Dec 20 Wed

SOCIAL: ONE MONTH TIL THE BACCHANALIA BALL AND BANQUET --HAVE YOU SENT IN YOUR CHECK YET?

Dec 23 Sat

SKI TOUR: UINTAS NORWAY FLATS (NTD) with leader Gail Slockslager (582 1429) is an NTD friendly easy tour. Meet at 9 am Parleys Way K-Mart at 9 am.

Dec 23 Sat

SKI TOUR: LOWER MINERAL FORK (NTD+) with leader Harry Kimbrough(288-1858) is a NTD+ tour, requiring skins for a slightly advanced beginners tour. Bring a lunch and meet at 9 am Butler Elementary School. Call Harry if you have any questions.

Dec 23 Sat

SNOWSHOE: LEADERS CHOICE (MOD/NTD) Russ Pack (572-5653) will lead a snowshoe tour to a location determined by who shows up at Butler Elementary School at 9:30 am.

Dec 24 Sun

SKI TOUR: UPPER GREENS BASIN (MOD) with Jim Piani (272-3921) is set for Jim's birthday! This MOD requires Beacons, shovels and skins and an attitude to enjoy Jim's birthday. Meet at 9 am, parking lot #2.

Dec 24 Sun

SOCIAL: CHRISTMAS EVE OPEN HOUSE Lori Ball (583-8133). will be hosting a low-key Open House on Christmas Eve, to allow you to get away from the hectic pace and "material insanity" that the holidays can create, and share some true holiday spirit with your WMC friends. Lori will supply clam chowder soup and a non-alcoholic punch - plan on bringing yourself and an appetizer, vegetable dish, or dessert (enough for 4-6 others), and other beverage choices. Time: 5-9 p.m. Address: 1261 Yale Avenue (one-half block west of 1300 East). Cover charge: \$2.00 members; \$4 non-members. Questions? call Lori.

Dec 25 Mon

SKI TOUR: ALBION BASIN (NTD-) is set for Christmas day with leader Ray Dudda (272 4601). This easy, relaxed tour meets at 9:30 am at Butler Elementary School. Call Ray for info.

Dec 25 Mon

SOCIAL: DOWNHILL SKIING Robert Turner (544-0605) will lead a downhill ski adventure to Alta on Christmas Day. Meet Robert and your WMC friends at 8:45 a.m. at Butler Elementary School, 2700 East just south of 7000 South (Fort Union Boulevard) to car pool. If you have questions, call Robert.

Dec 27 Wed

CLIMBING- WASATCH FRONT GYM- BEGINNERS WELCOME! Join Herb Hayashi any time after 5:30 for an evening of indoor climbing at 427 W 9160 S. Cost is discounted for WMC members! \$7.00 per visit (instead of \$8 reg.), or monthly memberships are available. If you would like to learn how to climb, call Herb (278-2620) and he will be glad to help you get started. WMC members also get a discount on rental gear! NOTE- Since this is a professionally monitored, controlled environment, helmets are not required for this activity.

Dec 30 Sat

SKI TOUR: LEADERS CHOICE (MOD) with Sue Berg (576-0532). Sue will decide where to find the best powder for her graceful turns/. Wherever she goes, Beacons, Shovels and skins are required. Start time will be 9 am with Ski bus transportation. Call Sue for meeting place.

Dec 30 Sat

SNOWSHOE: BOUNTIFUL PEAK (MOD+) Leader Bert Balzer (299-0426) wants snowshoers to join him on a nice moderately paced tour up Bountiful Peak. Bert says he will hold the pace down in hopes more people will come to see this great snowshoe area. Bert will meet snowshoers at the Albertson's grocery store parking lot in Centerville at 8:30am.

Dec 30 Sat

SNOWSHOE: DAYS FORK (NTD) Join leader Janet Friend (268-4102) for a lovely snowshoe tour up Days Fork in Big Cottonwood Canyon. Meet Janet at Butler Elementary at 9:30am.

Dec 30 Sat

SOCIAL: 21 DAYS TIL THE BACCHANALIA BALL AND BANQUET --HAVE YOU SENT IN YOUR CHECK YET?

Dec 31 Sun

SKI TOUR: BOX ELDER VIA DRY CREEK (MSD) with leader George Westbrook (942-6071). Requires Beacons, Shovels and Skins. Call George for time and meeting place. He also has information on a 6 day ski trip in Canada.

Dec 31 Sun

SNOWSHOE: DOG LAKE/LITTLEWATER/POWDER PARK (MOD) Leader Casey Nelson (265-8118) will be doing the Dog Lake/little Water/Powder Park loop for all you enthusiastic snowshoers. Meet Casey at Butler Elementary at 9:00am to get in on the fun!

Dec 31 Sun

SNOWSHOE: GREENS BASIN (NTD) Norm and Carma Pobanz (266-3703) will be leading an easy snowshoe tour into Greens Basin. Meet Norm and Carma at Butler Elementary at 9:30am.

Jan 1 Mon

SKI TOUR: NEW YEAR CRACK OF NOON SKI (NTD+) to the Lake Mary Overlook behind the Wasatch Mtn. Club lodge. Tom Silberstorf (255-2784) says to meet at 12:00 at Butler School or at 12:30 at the WMC lodge. Tom says he'll stop at the overlook or go on depending on the crowd and the night before.

Jan 3 Wed

CLIMBING- WASATCH FRONT GYM- BEGINNERS WELCOME! Join Herb Hayashi any time after 5:30 for an evening of indoor climbing at 427 W 9160 S. Cost is discounted for WMC members! \$7.00 per visit (instead of \$8 reg.), or monthly memberships are available. If you would like to learn how to climb, call Herb (278-2620) and he will be glad to help you get started. WMC members also get a discount on rental gear! NOTE- Since this is a professionally monitored, controlled environment, helmets are not required for this activity.

Jan 3 Wed

WMC BOARD MEETING (MSD+++) As usual, all WMC members are welcome to attend the monthly business meeting of the Governing Board. Contact any director to learn the exact time and location.

Jan 5 Fri

SNOWSHOE: MILLCREEK IN THE MOONLIGHT (NTD) Join Mark "Wolfman" Jones (486-5354) for a moonlight tour up Millcreek Canyon road on this full moon Friday night. Mark promises to snowshoe until the moon brightens the night. Meet at Skyline High's east parking lot at 6:30pm.

Jan 5 Fri

SOCIAL: MOON-LIGHT SKI AND SNOWSHOE TOUR (NTD-) Come join your WMC friends for a low-key evening of playing in the snow by the light of the full moon. Depending on snow conditions, we'll choose a local venue for cross-country skiing, snowshoeing, making snow angels, or any other activities you'd like to try in a snowy environment. Details in the January Rambler.

Jan 6 Sat

SKI TOUR: REYNOLDS PEAK (MOD) via Mill D. Hank Winauer (277-1997) is leading this tour. Meet at 9 am, parking lot #2. Beacons, Shovels and Skins are required. Call Hank for more information.

Jan 6 Sat

SKI TOUR: MT. TIMPANOGOS (NTD+), This tour takes you to some spectacular views with Leader Pete Mimmick (1-801-377-2330). Meet at 9 am Park and Ride, 72nd so or 9:30 Park and Ride Exit #287. Track or tour skis OK. Bring lunch.

Jan 6 Sat

SKI TOUR: BROADS FORK (MSD) Leader George Westbrook (942-6071) says this tour requires an early start. Of course, you'll need Beacons, Shovels and skins. Call George for information, time and meeting place.

Jan 6 Sat

SNOWSHOE: GREENS BASIN (NTD) Join the Friday night Wolfman, Mark Jones (486-5354) Saturday morning for a pant by pant description of the night before while snowshoeing into Greens Basin. Meet Mark at Butler Elementary School at 10:00am.

Jan 6 Sat

SNOWSHOE: RED PINE (MOD) Lady Leslie Woods has consented to discarding the skis today and taking up with another fun group-the snowshoers-for a stomp to Red Pine Lake. Meet Leslie (484-2338) at Butler Elementary at 9:00am.

Jan 6 Sat

SOCIAL: 14 DAYS TIL THE BACCHANALIA BALL AND BANQUET --HAVE YOU SENT IN YOUR CHECK YET?

Jan 7 Sun

SKI TOUR: MT RAYMOND (MOD+) Co-leaders Karen and Dennis Caldwell (942-6065) will lead this tour starting at 8 am. Requires Beacons, Shovels and Skins. Call the dynamic duo for information and meeting place.

Jan 7 Sun

SKI TOUR: INSTRUCTIONAL: The annual **Audrey Kelly** beginners ski clinic. This traditional event for beginners and anyone looking to increase their basic cross country skills will meet at 9 am. A hot lunch is provided with the clinic for a fee of 5 dollars. Please call Harry Kimbrough (288-1858) for registration and meeting place.

Jan 7 Sun

SNOWSHOE: SNAKE CREEK PASS (MOD-) Norm "Deerslayer" Pobanz (266-3703) will lead a light moderate snowshoe tour up Snake Creek Pass. (Beware of the snakes on the tour with you ladies!) Meet Norm at Butler Elementary at 9:30 am.

Jan 7 Sun

SNOWSHOE: LOWER NEFF'S CANYON (NTD/EL) Join Loraine Lovell for an easy-inexperienced snowshoers especially welcome-paced snowshoe tour in Lower Neff's Canyon. Meet Loraine at Skyline High's east parking lot at 9:30am.

Jan 7 Sun

SOCIAL: ENTERTAINMENT COMMITTEE PLANNING MEETING

Come join us for a fun evening of exchanging entertaining ideas with the WMC Entertainment Committee. We have had a great year, and we want YOUR ideas on what YOU want for WMC entertainment in 1996! We'll make home-made pizzas prior to the meeting - plan on bringing your favorite pizza ingredients, and we'll put together some great food! Time? Pizza making begins at 6:30 p.m., with the meeting to follow. Place? Sam's place, 5693 S. Whispering Pine Dr. Directions? Take I-15 to the 5300 South exit; go east to the end of the street, then go right onto Vine Street. Go through the first light (5600 South), then take the second left, which is Rainforest. Go to the end of the street, and look for the "flag" in the window. Questions? Call Sam (262-6698) or Craig (521-5408).

Jan 10 Wed

CLIMBING- WASATCH FRONT GYM- BEGINNERS WELCOME! Join Herb Hayashi any time after 5:30 for an evening of indoor climbing at 427 W 9160 S. Cost is discounted for WMC members! \$7.00 per visit (instead of \$8 reg.), or monthly memberships are available. If you would like to learn how to climb, call Herb (278-2620) and he will be glad to help you get started. WMC members also get a discount on rental gear! NOTE- Since this is a professionally monitored, controlled environment, helmets are not required for this activity.

Jan 12 Fri

SOCIAL: SOCIAL: SING-A-LONG (NTD!!) Join Frank Bernard (533-9219) at 7 pm for this "beginning of the season" session of folk and joke singing. Bring your voice and/or guitar to Frank's home at 417 N Center St in Capitol Hill (about 130 West 400 North), and we'll entertain ourselves in this 100% audience participation event. Bring your own beverages and snacks - an enthusiastic attitude is the only other requirement! If you have questions, call Frank.

Jan 13 Sat

SKI TOUR: WOODROW WILSON PEAK (MSD) Leader Pat McEwen (571-5033) will lead this tour beginning at 9 am. Do to the "SuperTour" status call Pat for meeting place. Use of the Ski Bus is required. Beacons, Shovels and Skins required. Call Pat for details.

Jan 13 Sat

SKI TOUR: UINTAS: BEAVER CREEK TRAIL, (NTD) Meet leader Cindy Cromer (355-4115) for this full day outing at 9 am at the Parleys Way K-Mart. Bring a lunch for a great day on the trail. Call Cindy for details.

Jan 13 Sat

SKI TOUR: DOG LAKE (NTD) with fearless leader Jim Piani (272-3921). Meet Jim at 9 am Parking lot #2 for this tour. Call Mr. Jim for answers to your questions, and more!

Jan 13 Sat

SKI TOUR: DAYS FORK FROM ALTA. (MSD) Walter Haas (534-1262) will lead this difficult tour with an early start. Requires Beacons, skins and shovels. Call Walt for time and place.

Jan 13 Sat

SNOWSHOE: BROADS FORK (MOD) Join leader Knick Knockerbocker or is it Knickerbocker (272-5358) on a tour up BROADS Fork in Big Cottonwood Canyon. Meet Knick at Butler Elementary at 9:30am.

Jan 13 Sat

SNOWSHOE: SCOTTS PASS (NTD+) Anne Boeder (486-6368), one of our newer WMC members, has consented to lead a snowshoe tour to Scott's Pass in Big Cottonwood Canyon. Meet Anne at Butler Elementary at 9:30am.

Jan 13 Sat

SOCIAL: 7 DAYS TIL THE BACCHANALIA BALL AND BANQUET --HAVE YOU SENT IN YOUR CHECK YET?

Jan 14 Sun

SKI TOUR-SNOWSHOE MIXER: UINTAS: NORWAY FLATS (MOD). Join Cheryl Soshnik (1-801-649-9008) for a tour meeting at 9 am, Kimballs Junction K-mart. Skins are required if you don't know how to wax. This is a fine area for snowshoeing as well. Call Cheryl for details and additional equipment.

Jan 14 Sun

SKI TOUR: MT. RAYMOND/BOX ELDER (MSD) tour with Rolf Doebebling (467-6636). This tour meets at 8 am with a limit of 8 people. Call Rolf for meeting time and place. Skins, Beacons and Shovels are required.

Jan 14 Sun

SKI TOUR: SILVER FORK (NTD) This tour with leader Janis Chatwin (255-3732) (her favorite tour) starts at 10am meeting at Parking lot #2. Skins are required unless you can convince Janis you have very sticky skis.

Jan 14 Sun

SKI TOUR: CATHERINE PASS (MOD) with Tom Silberstorf (255-2784). Tom will lead this tour starting 9 am at Butler elementary school. Beacons, Skins an shovels are required.

Jan 14 Sun

SKI TOUR: LEADERS CHOICE (NTD) with Charle Sherman (532-1952). Charle will lead a tour starting by meeting at 9am at parking lot #2. Skins are recommended. Call Charle to see where he has decided where to go to.

Jan 14 Sun

SNOWSHOE: DESOLATION LAKE (MOD) Join Gretchen Siegler (575-8526) on a moderate snowshoe tour to Desolation Lake. Meet Gretchen at Butler Elementary at 9:30am.

Jan 14 Sun

SNOWSHOE: WILLOW LAKE (NTD) Tom Willis (485-0370) will lead an easy snowshoe tour to Willow Lake. Meet Tom at Butler Elementary at 9:30am.

Jan 14 Sun

SOCIAL: SOUL FOOD POTLUCK Come join us for an evening of hearty food - SOUL food. Details will be in the January Rambler.

Jan 16 Tue

SOCIAL: CHECK DUE TO SAM FOR THE BACCHANALIA BALL AND BANQUET (OR PAY MORE AT THE DOOR).

Jan 17 Wed

CLIMBING- WASATCH FRONT GYM- BEGINNERS WELCOME! Join Herb Hayashi any time after 5:30 for an evening of indoor climbing at 427 W 9160 S. Cost is discounted for WMC members! \$7.00 per visit (instead of \$8 reg.), or monthly memberships are available. If you would like to learn how to climb, call Herb (278-2620) and he will be glad to help you get started. WMC members also get a discount on rental gear! NOTE- Since this is a professionally monitored, controlled environment, helmets are not required for this activity.

Jan 20 Sat

SNOWSHOE: MAYBIRD LAKES (MOD) Join Holly Smith (272-5358) for a moderate snowshoe tour to the Maybird Lakes in Big Cottonwood Canyon. Meet Holly at Butler Elementary at 9:30am.

Jan 20 Sat

SOCIAL: BACCHANALIA BANQUET AND BALL (AKA THE ANNUAL AWARDS BANQUET) ALL WMC MEMBERS are cordially invited to the annual Bacchanalia Banquet and Ball at the Olympus Hotel, 161 W., 600 S. Yes, it's time to bring those semi-formal clothes out of the closet for all of your WMC friends to see! Join us for a delightful evening of socializing, dinner, and dancing to DJ Don Woodbury's wide selection of music. Recognition Awards will be given to WMC members who have made significant contributions to the club during 1995. All-inclusive cost: \$19 per person paid in advance (due to Sam Kievit no later than Tuesday, January 16 - see the advertisement in The Rambler for details), or \$29 at the door (due to late charges the hotel will assess). This is a GREAT way to kick off another year for the Wasatch Mountain Club - we look forward to seeing you there!

Jan 21 Sun

SNOWSHOE: DOG LAKE (NTD) Anne Boeder (486-6368) will be leading a snowshoe tour to one of the popular destinations in Big Cottonwood Canyon. Meet Anne at Butler Elementary at 9:30am.

Jan 24 Wed

WINTER ACTIVITIES INSTRUCTIONAL: "Robert Frohboes" Annual Avalanche Clinic at the Unitarian Church (6th South 13 East) at 7:30 pm with the Utah Avalanche Forecast Center. Learn what dangers lie underneath the white winter beauty! Become aware and Stay alive! See the ad in this month's Rambler for more information. A \$5.00 donation is requested.

Jan 24 to 28 Wed-Sun

SKI TRIP-OUT OF TOWN: SIERRAS Bill Robbins (466-0492) has a family cabin North of Reno that he is offering to share for a WMC long weekend. The cabin, which sleep 8 comfortably, is about 6 miles on an unplowed forest service road, with about a 600' elevation change. Bill says the terrain is similar to that in the Uintas, gradual mostly, and safe from avalanches, with challenging terrain available around the cabin. Clark's Peak is a 1500' climb close by. The cabin is heated, but you'll need to carry in water and food. The cost of the trip will be only for the food, fuel, and a small donation for the use of the cabin. Snow should be good the end of January, but if there's a winter hot-spell, Bill may reschedule the trip until better (worse) weather. Skins and beacons are only needed if you venture into the surrounding difficult terrain. Call Bill to register.

Jan 24 Wed

CLIMBING- WASATCH FRONT GYM- BEGINNERS WELCOME! Join Herb Hayashi any time after 5:30 for an evening of indoor climbing at 427 W 9160 S. Cost is discounted for WMC members! \$7.00 per visit (instead of \$8 reg.), or monthly memberships are available. If you would like to learn how to climb, call Herb (278-2620) and he will be glad to help you get started. WMC members also get a discount on rental gear! NOTE- Since this is a professionally monitored, controlled environment, helmets are not required for this activity.

Jan 27 Sat

AVALANCHE BEACON PRACTICE SESSION (in conjunction with the avalanche awareness seminar on the 24th) This is for those folks wishing to learn what to do with those "beeping" boxes. This is also for those who want brush up on their avalanche transceiver skills. Meet at the Butler Elementary school at 12:00 noon to carpool to a snowy practice site. Bring Beacons, shovels, warm clothes and skis or snow shoes to get around on the snow. There will be a beacon location contest for valuable prizes!

Jan 28 Sun

SOCIAL: 9TH ANNUAL SPAGHETTI PARTY Vincenzo De Simone (1-801-649-6805) invites us to his annual evening of Italian cuisine and fellowship by the fire. Cost: \$5 --includes all food-- this is NOT a potluck! Time: 6 pm. Hot chocolate and coffee provided, bring other beverages of choice. Directions: I-80 to Park City exit (Hwy 224), heading into Park City... Turn Left at Meadows Drive (just past the large white barn on the right). Drive to the crest of the hill, turn left and up the hill to the T. Turn right and follow the sounds to the fun. (No pets or children, please). Questions? Contact Vincenzo.

Jan 31 Wed

CLIMBING- WASATCH FRONT GYM- BEGINNERS WELCOME! Join Herb Hayashi any time after 5:30 for an evening of indoor climbing at 427 W 9160 S. Cost is discounted for WMC members! \$7.00 per visit (instead of \$8 reg.), or monthly memberships are available. If you would like to learn how to climb, call Herb (278-2620) and he will be glad to help you get started. WMC members also get a discount on rental gear! NOTE- Since this is a professionally monitored, controlled environment, helmets are not required for this activity.

Feb 4 Sun

SNOWSHOE: LAKE BLANCHE (MOD) Lady Leslie Woods (484-2338), the Princess of the Mountains to the skiers, is a stomper on the "shoes" when she leads snowshoe tours. Join Leslie on a moderate, fun tour to Lake Blanch in Big Cottonwood Canyon. Meet Leslie at Butler Elementary at 9:00am.

Feb 10 Sat

SNOWSHOE: RED PINE LAKE (MOD) Gretchen Siegler (575-8526) will be the leader on the trail to Red Pine Lake. Since Valentine's Day is coming next week, perhaps she is looking for something red. Meet Gretchen at Butler Elementary at 9:30am.

Dauphinee Randall O'Dowd

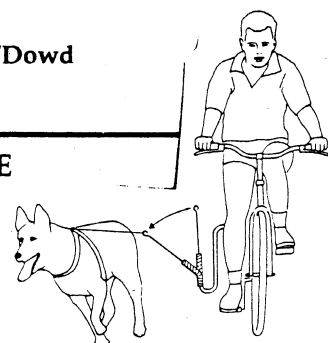
Distributor

\$ 59.00

THREE DOG BIKE

1930 Choke Cherry Drive
Bountiful, Utah 84010

801-299-1005



From the Ski Touring Director

By Brian Barkey.

Lots of stuff going on, It's skiing time! This year the **avalanche seminar** will be at the Unitarian Church on the corner of 6th south and 13th east. We'll meet at 7:30 pm on Wednesday night on the 24th of January with a representative from the Utah Avalanche Forecast Center. The seminar will cover the basics about winter backcountry travel, what to be aware of and watch for in order to avoid avalanches. We're asking for a \$5 donation to cover costs. If you don't have the \$5, come anyway. There will be an avalanche transceiver practice and learning session the following Saturday (meet at the Butler Elementary school at 12 noon). We will be having a Beacon locating contest for valuable prizes!

For those of you wishing to learn how to ski, Harry Kimbrough has volunteered his time, skiing skills and cooking expertise to conduct the annual **Audrey Kelley Ski Clinic**. This is one for folks who don't know which way to point the skis to make them go! (Beginning intermediates are welcome too!) It's on January 7th (Sunday). Please call Harry at 288-1858 for more information, or if you'd like to help him out!

For those who want to tackle the big mountains, Edgar Webster, an excellent ski instructor, is doing the **annual Telemark Skiing clinic** at Alta. Call him (583-0703) for more info. Sue Berg, our skiing transportation expert has a few comments:

This year there will be no parking at the Spruces parking lot; the bridge will be removed and won't be replaced until spring of 96.

Alternate parking is available 1/4 mile away at the Reynold's flat and Mill 'D' trail head. Don't count on using the side of the road!

UTA has been providing excellent service up and down the Cottonwood canyons for a number of years. For cross canyon travel, such as a ski from Big to Little Cottonwood canyons, they are very convenient. To avoid the hassles of parking, these buses are a must. The buses run frequently, the drivers are friendly, co-riders interesting and they'll stop just about anywhere you want to ski. (Did we mention cheap too?) Call 287-4636 and UTA will send you the ski bus schedule.

Finally, I have to thank the terrific bunch of folks on this years ski committee:

Sue Berg, Phil Fikkan, Jane Gunther, Jim Piani, Harry Kimbrough, Tom Silberstorf, Tom Walsh, and Edgar Webster

These are about the best people you'll find in the mountains; if it wasn't for these folks, we'd have a pretty poor ski season! Be extra nice to them, Give 'em a hug and a kiss next time you see them!

See ya in the mountains!

From the Boating Director

by Janis Huber

Here is the updated addresses from the permit applications. Next month, I plan to list the suggested dates. If you have any questions, feel free to call me at 486-2345.

RIVER PERMIT APPLICATION INFORMATION FOR 1996 FOR WMC

CATARACT CANYON
Canyonlands National Park
125 West 200 South
Moab, UT 84532
801/259-7167
System: FCFS
To Agency: After Jan 1

DESOLATION CANYON
BLM, Price River Resource Area
900 North 700 East
Price, UT 84501
801/636-3600 (801/637-4591)
System: Lottery
To Agency: Dec 1- Jan 30

GRAND CANYON
River Permits Office
Box 129
Grand Canyon, AZ 86023-1029
520/638-7843
System: FCFS(Long Wait List)
To Agency: Feb First Time/Jan to renew

ROGUE
TRI (Contracting Service)
PO Box 5149
Rooseburg, OR 97470
503/672-4168 (or 541/672-4168)
System: Lottery
To Agency: Jan 1-Feb 12

MAIN SALMON
North Fork Ranger District
Box 180
North Fork, ID 83466
208/865-2383
System: Lottery
To Agency: Dec 1 - Jan 31
Send SASE with Application request

MIDDLE FORK SALMON
Middle Fork Ranger District
Box 750
Challis, ID 83226
208/879-5204
System: Lottery
To Agency: Dec 1 - Jan 31

HELL'S CANYON
Hell's Canyon National Recreation Area
Box 699
Clarkston, WA 99403
509/758-1957
System: Lottery
To Agency: Dec 1 - Jan 31

SAN JUAN
BLM
San Juan Resource Area
PO Box 7 (435 N. Main)
Monticello, UT 84535
801/587-2144 (801/587-2141)
System: Lottery
To Agency: Dec 1 - Jan 31

LODORE and YAMPA
River Ranger
Dinosaur National Monument
Box 210
Dinosaur, CO 81610
970/374-2468
System: Lottery
To Agency: Dec 1 - Jan 31

SELWAY
District Ranger
West Fork Ranger District
6735 West Fork Road
Darby, MT 59829
406/821-3269
System: Lottery
To Agency: Dec 1 - Jan 31

SPLIT MOUNTAIN (GREEN) "DAILY"
Same address and phone as Lodore
System: FCFS by phone
To Agency: Mar 1 or after

WESTWATER CANYON
BLM, Grand Resource Area
82 East Dogwood
SUITE G
Moab, UT 84532
801/259-4421 or 259-8193
System: Lottery
To Agency: Dec 1 - Jan 31

Notes: Some lottery rivers have a "call in for open dates: system after the drawing, FCFS is First Come First Served, SASE is Self Addressed, Stamped Envelope, Many of these numbers only answer in the mornings

From the Snowshoeing Coordinator

by Russ Pack

Since no snowshoeing has taken place at the time this was written, I will only be providing information on upcoming WMC winter activities affecting snowshoers discussed during the Winter Sports Committee meeting. Watch the Rambler for more information!

Possible snowshoeing and skiing mixers, Dec. 16 and 17 and again Jan. 14.

Possible moonlight snowshoe/ski tours, Jan. 5, Feb. 2, and early March.

Rock'n (in the mountains) and roll'n (on the road to Reno) for a possible snowshoe/ski trip to a cabin in the Reno area January 25 thru 28. Three of the four Yurt trips planned in January and February can accommodate snowshoers. But you have to hurry to get on the lists!

**WASATCH WORKS
ELECTRONICS**

**HARRY KIMBROUGH
1-801-288-1858**

REPAIR - INSTALLATION - RESTORATION

AUDIO / VIDEO / SECURITY / INTERCOM

20 YEARS EXPERIENCE

THE WASATCH MOUNTAIN CLUB

Membership applicants must participate in at least two Club outdoor or service activities. Yearly dues are \$30 single, \$45 couple, \$15 student, \$5 application and reinstatement fee.

GOVERNING BOARD 1995-96

President and Directors

President	273-8010	Nance Allen
Vice President	273-8076	Kyle Williams
Secretary	272-4552	Camille Pierce
Treasurers	486-8525	Kathy Hoenig
	359-1950	Larry Schumer
Membership Dir.	328-9364	Leslie Ann Whited
	266-9462	Felecia Kulsic
Hiking Directors	583-1205	Brad Yates
	262-7152	Kip Yost
Boating Directors	486-2345	Janis Huber
Conservation Dir.	647-0205	Rich Osborne
Entertainment Dir.	262-6698	Sam Kievit
	521-5408	Craig McCarthy
Lodge Directors	968-1252	Martin Clemans
		<vacant>
Mountaineering Dir.	273-8076	Kyle Williams
Publications Dir.	484-8271	Jim Zinanti
	484-8271	Reda Herriott-Zinanti
Winter Sports Dir.	649-9008	Cheryl Soshnik
	394-6047	Brian Barkey
Bicycling Dir.	486-0909	Rick Kirkland
Information Dir.		<vacant>

Trustees

1992-96 term	328-4512	Mike Budig
1993-97 term	942-6065	Karin Caldwell
1994-98 term	484-2338	Leslie Woods
1995-99 term	943-8500	Phyllis Anderson
Emeritus	355-7216	O'Dell Petersen
Emeritus	277-6417	Dale Green

COORDINATORS

(under boating director)		
Canoeing	486-4986	Mark McKenzie
Kayaking	<vacant>	
Sailing	649-6805	Vince DeSimone
Rafting	322-4326	Janet Embry
Boating Equ.	487-7072	Vera Novak
Boating Instr.		<vacant>
(under ski touring director)		
Snowshoeing	572-5653	Russ Pack
(under bicycling director)		
Mountain Biking		<vacant>
(under entertainment director)		
Volleyball	364-4006	Ross Martin
(under information director)		
Adopt-A-Highway	583-9611	Carl Warberg
(under publications director)		
Commercial Adv.	484-8271	Reda Herriott-Zinanti
Rambler Mailing	288-1858	Harry Kimbrough
(under lodge director)		
Lodge User Rep	647-0205	Rich Osborne
(under conservation director)		
Trails Issues	364-5729	Chris Biltoft
(wilderness issues coordinators)		
BLM Land	278-5826	John Veranth
S. Rafael Swell	943-5520	Will McCarvill
Kaiparowits Plat.	647-0205	Rich Osborne
Rivers	486-1476	Allan Gavere
West Desert	273-7955	Donn Seeley

Voice-Mail

by Dr. Mau

The Board of Directors decided to discontinue the Voice Mail system. It will be replaced with a new answering machine available to take your calls 24 hours a day. Dial 363-7150.

Wasatch Mountain Club on World Wide Web

Dream Park (550-5136), a local Internet access service, is providing the WMC with a free home page. Check us out on the Information Super Highway for late breaking information, current club events, archives of important information and a photo gallery of WMC adventures. The page will debut on December 1 and all suggestions are welcome. Tony Ackerman is the Webmaster so give him a call (966-6041) or email (apa@slc.unisys.com) with your ideas and to submit pictures and/or articles for the page.

WMC Home Page URL = www.drmpark.com/~wmc

Commercial Advertising

The Rambler encourages and supports your products and services through pre-paid commercial advertisements. Advertisements must be camera ready and turned into the advertising director no later than the 15th of the month prior to publication. Prepayment is necessary for single month advertisements with invoicing and net 30 for repeat advertisements. Contact the Commercial Advertising Coordinator for information or to place an ad.

Full Page	\$95.00	7" x 9"
Half Page	\$50.00	7" x 4.5" Horizontal 3.5" x 9" Vertical
Quarter Page	\$30.00	3.5" x 4.5" square 7" x 2.25" horizontal 2.25" x 9" vertical
Business Card	\$15.00	3.5" x 2"

KNOW PRECISELY WHERE YOU ARE

GPS

Handheld SATELLITE NAVIGATION Units from Under \$199.00

CommSystems Intermountain **944-4500**

Authorized DEALER for Industry Leaders MAGELLAN and TRIMBLE

Come one, Come All
to the WMC

BACCHANALIAN BANQUET & BALL

(a.k.a the WMC Annual Nominations and Awards Banquet)

Saturday, January 20, 1996

6:00 pm to midnight

Olympus Hotel

161 West 600 South

in Salt Lake City



Dining



Recognition Awards



Dancing to the Music DJ Don Woodbury

YOU

(all WMC members) are welcome and encouraged to attend this annual celebration which recognizes those WMC members that have made significant contributions to the Club in 1995. Enjoy an evening of dining and dancing with your WMC friends.

Semi-formal attire is requested.

Your non-WMC guests are welcome to attend.

Cost is \$19.00/person in advance and \$29.00 at the door.

Advance registration: please clip and mail the coupon below with payment by January 15, 1996 Mail to

Sam Kievit
WMC Entertainment Director
5693 S. Whispering Pine
Murray, UT 84107

Make checks payable to the Wasatch Mountain Club.

Note that a fee of 5.00 will be assessed for late registration (total \$24/person) and that cost at the door is \$29/person.

Registration for WMC 1996 Awards Banquet

Name: _____ Number in Party: _____

Name(s) of Guest(s): _____

Entree Preference: Vegetarian or non-vegetarian: _____

COMING ATTRACTIONS

February 4 1996 SOCIAL: HOT AND SPICY POTLUCK

February 10 1996 SOCIAL: RED SHOES AND CHOCOLATE DESSERTS VALENTINES PARTY

November-December SKI TOURS: LEADERS CHOICE (MSD) Depending on snow, George Westbrook (942-6071) will be organizing impromptu MSD ski tours through November and December. Avalanche transceivers, shovels, skins, and the ability to handle steep snow will be required. Call George when it snows.

January and February 1996 YURT SKIING Due to popular demand we have reserved five weekends in the premier mountain yurts of this area. We have steep and deep in the La Sals and rolling intermediate hills north of Logan. The usual deal is to backpack (ski-pack) your food and gear into the yurt, ski the weekend, and pack out. The yurts have coleman stoves and furniture. Some offer other amenities. Talk to anyone who has yurted before - its a blast. Last year the yurt trips filled up quickly, so make your plans fast. (Due to drop outage, there will probably be space available.) Call the Yurtmeister, Tom Walsh, after 7:00 pm at 969-5842 to sign up for the trip of your choice. When the trips are signed up, a leader will be designated.

January 5-6: BUNCH GRASS YURT north of Logan has long wide powder bowls minutes from the front door. It sits at 8400' beside an aspen forest. Pack in on Friday, stay overnight Friday and Saturday, and pack out on Sunday afternoon. Capacity is 6 people. Cost is estimated at \$48.00. P.S. We got a full moon for this one.

January 20-21: BALDY KNOLL YURT east of Driggs, Idaho in the Tetons has intermediate bowls and hills with nearby access to steeper and more adventurous terrain. Pack in on Saturday, stay Saturday and Sunday nights, and pack out Monday afternoon. Capacity is 8 people. Cost is estimated at about \$40.00.

February 2-3 TOMASAKI CABIN IN THE LA SALS Steep and Deep! With good snow the runs are long and fast, with 2000' vertical exposure just outside the door. Pack in on Friday, stay Friday and Saturday nights and depart Sunday afternoon. Capacity is 10 people. Cost is undefined at press time but is reasonable.

February 16-19 Death Valley Mountain Bike Trip Tired of snow, cold, and mobs of president's day weekend? Nostalgic about all the great rides you did last summer? Well...have we got a trip for you!!! Average daytime temperature 74°, snow 0%, rain 0%, sunny 99.9%, scenery 110%. Hot Springs 105° for soaking out the tired muscles. It is the biker's paradise in February! We will do day rides from a central camping location at Furnace Creek. This is the second year for this trip and it is fabulous! Registration is limited so sign up early. Cost is about \$60 plus transportation which will be by bus if enough people sign up. There will be a planning meeting on Sunday, Jan. 14, at 7:00 pm at 3886 Holiday Curve, Park City. Call Bob Wright (1-801-649-4194) for more information and to register.

February 17-19 STEAM MILL YURT north of Logan has a 3.5 mile trip in with an altitude gain of 1500 feet. It is located at 8100' and has plenty of intermediate skiing. Pack in on Saturday, stay overnight Saturday, Sunday, and Monday nights and depart around noon Tuesday. This is a three day trip on the President's day holiday. Capacity is 6 people. Cost is about \$70.00.

MID-WINTER: Ski Touring BRYCE CANYON (Ruby's Inn) You have seen it in all the calendars-the panorama of Red Orange Hoodoo's laced with SNOW. The scene usually has a skier looking down onto the fantastic Bryce Canyon formations. That skier could be YOU. Plans are now being made for a weekend trip to Ruby's Inn to tour the gently rolling Bryce Canyon Rim. There are currently no reservations nor a fixed date. We could go on the week ending January 13 or 20. Also the week ending February 3 is available. Rooms with two Queen Sized bed are \$45.00. Think about kicking and gliding on smooooth NTD Trails. Think about relaxing in the HOT TUB after a day of touring the rim. Think about calling Tom Walsh to sign up and get more information (969-5842 after 6:00 PM)

April 3 & 4 1996 Grand Canyon Phantom Ranch

Event is limited to 16 participants. Cost for 6 meals and 2 nights stay at the ranch is approximately \$150.00. Lodging and food on the south rim are additional costs. Lodging accommodations on the south rim for April 2 & 5 will be arranged. (These costs are in addition to those for Phantom Ranch). The slots are filling fast! To secure your slot, payment of the \$150.00 must be made to the trip coordinator no later than January 27, 1996. For more information call Linda Kosky at 943-1871.

April 14-21, 1996 WMC BAJA HA! HA! SAILING TRIP The sea of Cortez between Cabo San Lucas and La Paz is the cruising area for a fun-filled trip next spring. Avoid the UTAH MUD season and chase away the WINTER BLUES in MEXICO, sailing scuba, snorkeling, whale watching, beaches, and visiting interesting shore-side places and towns. No sailing experience is necessary. Those wishing to learn more about sailing will have plenty of opportunity. The trip is expected to cost \$1000 or so which includes air and ground transportation, boat costs, food on-board, hotel, etc. Three BOATS have been reserved. To reserve your space, send a non-refundable deposit of \$25.00 to Vince DeSimone P.O. Box 680111, Park City, UT 84068-0111, or CALL 1-801-649-6805 for details.

June 1996 MOUNTAINEERING: DENALI ALASKA Response was fabulous - Trip is full. 485-9623

September or October, 1996 Grand Canyon Rim to Rim

This is a "maybe"; depending on availability of accommodations and interest. The thought is for a North rim to South rim hike, with a one or two night stay at Phantom Ranch. Transportation considerations would be a shuttle service for pick-up at the South rim or charter of a bus for drop-off at the North rim and pick-up at the South rim. Participation would be limited to 9-16 individuals. Cost would be a minimum of \$150.00. If you would definitely be a participant, if the trip can be arranged, call Linda Kosky at 943-1871.

WMC BOARD OPENINGS

by Nance Allen

The Governing board consists of a set of directors and four trustees; all volunteers who serve for a twelve month period. This is a **working board**, not just a policy setting body and we have a **good time**. Maybe this is the year for you to see how the Club works and to help set the Club's direction. Give it some thought won't you? In general, a director's responsibilities include: responsibility for a respective area, forming a working committee, being a conduit for information to the Board and back to the membership, timely submissions of events and activities to the *Rambler* editor(s), keeping a current inventory list, and attending all Board meetings regardless of the season of the respective activity.

Below is a brief outline of the duties of the open positions on the Board.

President Must have been a WMC member in good standing for at least five years and have previously served on the Board for at least one year. The president presides at all Board and General meetings; in conjunction with the Board sets the annual calendar; holds an annual retreat; and is responsible for the Leaders Party.

Treasurer Receives and disburses all funds under the direction of the Board; prepares and makes deposits and writes all checks, at least twice a month; prepares and presents monthly financial statements to the Board; balances the checking account; transfers and tracks funds; and keeps records for the annual financial review. Must be computer literate and able to learn/use bookkeeping software.

Conservation Director Forms and serves as chair of the conservation committee; and trails coordinator reports to this position.

Mountaineering Director is responsible for planning the annual climbing schedule, climbing instruction, safety, and all WMC mountaineering equipment.

Boating Director is responsible for the annual boating schedule, safety, obtaining necessary permits, and obtaining and maintaining boating equipment. Six coordinators: canoeing, kayaking, sailing, rafting, boating equipment, and boating instruction report to this director; has a budget; and works with a committee.

Entertainment Director is responsible for arranging all entertainment and social programs in addition to securing facilities for membership meetings works with a committee; and has a budget.

Lodge Director is responsible for maintenance and Lodge work parties; the Lodge user rep. reports to this position; has a budget; The Club must secure culinary water and connect to the water and sewer system in 1996.

Membership Director keeps an accurate list of members, oversees membership activities for renewal and attracting new members; verifies applications and presents to the Board for approval; works with a committee; coordinates efforts with the information director; and needs to be computer literate and maintain the membership data base.

Information Director is responsible for promoting the Club and its activities; attracting new members and enhancing the Club's image; and coordinates efforts with the membership director.

Publications Director is responsible for publishing and mailing *The Rambler*; this monthly publication is the Club's official record; two coordinators report to this position; *The Rambler* is produced on a PC by the director and printed by a professional printer; and has a budget.

Bicycling Director is responsible for planning the annual schedule and maintaining cycling safety; mountain biking and in-line skating coordinators report to this position; and works with a committee.

Historian is responsible for maintaining historical files of WMC documents, including *The Rambler*, meeting minutes, and other memoranda and correspondence; writes a monthly column for *The Rambler* about past WMC activities.

Editors Note: All directors should be computer literate, especially the Treasurer, Membership Director, and Publications Directors. The WMC owns a Macintosh computer, with Filemaker Pro database software (for membership records), Microsoft Word and Pagemaker (for writing and *Rambler* work.) and a PC (80486, 66 Mhz, 16 MB) with Microsoft Word 6.0, Wordperfect 6.0, a Fax modem, laser printer, and other hardware and software which is available for director usage such as preparing *Rambler* submissions, writing memos, doing membership activities, treasury activities, and preparing *The Rambler*.

Wasatch Mountain Club Governing Board Positions 1996-1997 Nominations

President	No nominees
Secretary	Camille Pierce (incumbent)
Treasurer	No nominees
Membership	Kyle Williams
Hiking	Brad Yates (incumbent)
Boating	No nominees
Conservation	Will McCarvill
Entertainment	Lori Ball (co-director) Patti O'Keefe (co-director)
Lodge	No nominees
Mountaineering	Sam Albano
Publications	No nominees
Ski Touring	Brian Barkey (incumbent) Tom Walsh (co-director)
Bicycling	No nominees
Information	No nominees (Currently Vacant)
Trustee	John Veranth
Historian	No nominees
If you or anyone you know is qualified and would like to run for any board position, please contact one of the nominations committee members, or call the incumbent to find out about the position.	
Mary Ann Losee (chair)	537-1929
Jerry Hatch	583-8047
Linda Kosky	943-1871

TRIP TALKS

Circle All Peak

September 30, 1995

by Randy Long

Actually this hike was originally scheduled to go up Sugarloaf Peak. I talked to the Forest Service and was told that the Albion Basin road was already closed. Looking at the snow on the peaks, I remembered a bit of scrambling near the summit. Safe enough when dry, it could be dangerous should anyone slip and fall on the snow. A change was obviously in order.

At first the group wanted to go up Broad's Fork. This was not the best since there is fragile vegetation in the meadow at trails end. This would probably be trampled when hidden in shallow snow.

Thus, the decision was made to hike to Circle All Peak. I explained that this little peak was named after the snowslide area

below it, but no one knew where the name of the slide zone came from. Are there any answers out there?

We hit snow at about 8,000 feet then had nothing but snow for the rest of the way. Some people had a little trouble the last part of the way. We all enjoyed this "little peak with a big view". I was glad we did not try Sugarloaf Peak this time, even though that 11,000 foot peak is one of my favorites. Keep your fingers crossed for next year. The hikers were Tony Barron, Yvonne Godber, Bob Jansen, Carol Ann Langford, and myself, Randy Long, leading.

Twin Lakes Pass

Saturday, September 2, 1995

Randy Long

Twin Lakes Pass, (above Brighton), was the beginner hike for this Saturday, September 2, 1995. The day was wonderful, warm and not a cloud in the sky. All the snow was finally gone. We met at the mouth of the canyon and drove to the visitor center at Silver Lake. This is an interesting and educational center, one not to be missed. This is one of my favorite hikes because of the many overlooks, lakes and all the spectacular scenery.

We stopped at both overlooks of Silver Lake, and again at Twin Lakes Dam. We even stopped at the overlook of Lake Solitude, before reaching our destination at the pass. The pass gave us a panoramic view of both Big and Little Cottonwood Canyons. We ate our lunch leisurely with this beautiful view.

Thanks to Judy Dorman for hiking today.

Steam Mill Yurt Trip

Edgar Webster

It was the worst of times, it was the best of times. We met in Logan for this trip on a warm, rainy Friday and proceeded to the trailhead hoping for colder temperatures and more appropriate precipitation in Logan Canyon.

We were disappointed. The trailhead was a muddy mess and we geared up for the trip in a steady, soaking rain. One bright spot was supplied by John, a rookie yurter, who followed directions from the trip leader and brought a case of beer to carry in. After a good round of laughter it was suggested that leaving it in the car for the return trip was ok. We donned garbage bags in an attempt to shield ourselves but it was hopeless. We proceeded up the trail becoming more sodden with every step. It rained the whole way into the Steam Mill Yurt, which we found located in a beautiful, quiet, wet aspen grove. The gang changed clothes and settled in not knowing what to expect the next day. We soon got an indication when it began to snow at about 5pm.

Upon awaking the next morning we opened the door to find a wonderful thing. Two feet of snow had fallen and it reached halfway up the door! After breaking trail we spent the morning skiing the lower north slopes of Steam Mill Peak, a wonderful glade. We cheered each other on as Brian, Chris and Jurgen danced thru the trees. The group was cautious with all the new snow, digging a snowpit to check snow stability and staying in protected terrain.

Later on Saturday we met a group of four skiers, apparently locals, digging a pit on the northeast exposure. We briefly visited and proceeded up to the northeast which brought us to an easy way to gain the summit of Steam Mill Peak. The summit was beautiful and heavily corniced and no one was sure of the avalanche stability. In the "Winning the Avalanche Game" video, Bruce Tremper had talked about using cornices as "backcountry

bombs" by using a rope to cut them off, dropping the cornice onto the suspect slope. Fortunately Brian was with us and he had brought his rope! We stood back from the edge in a safe place, lassooed the cornice and cut it off in three or four places with no movement of the slope below (see photo). We skied that sucker from the top, thanking Tremper all the way. After the misery of slogging in the rain the day before, the quality of the skiing was amazing.

We returned to the yurt that afternoon exhausted and glowing and looking forward to a real treat. John and Shannon had teamed up to prepare fresh sushi with wasabi, the traditional hot horseradish condiment. Shannon explained that hot spicy foods encourage endorphin production in the body, that wonderful natural opiate. She also suggested that a little alcohol, for medicinal purposes of course, would likely enhance the effect. We proceeded to eat all the sushi they could make, as fast as they could make it, chasing each round with shots of whiskey. We then played a rousing game of "Grandma likes coffee, she hates tea" lead by Brian. This went on for hours as we degenerated into a giggling mass of exhausted skiers.

The next day was more of the same as we skied our brains out in the good snow. We reluctantly packed up to leave that afternoon and descended back to the cars. Lucky for us John had brought that case of beer, which effectively quenched our thirst after the weekend's adventures as we basked in the sunshine. After such a miserable start we enjoyed a fine trip.

The group was; Chris (I gotta do another run) Atkin, Brian (I got the rope) Barkey, John (I got the beer) Gregson, Jurgen (I got the camera) Pilz, Shannon (I got the sushi) Powers and your scribe and leader, Edgar (I gotta do another run too) Webster.

PLAYGROUND BULLY

or

MT ROBSON IN YOUR FACE

Nov 12 1995
by Kyle Williams

Remember that big kid in 3rd grade that always pushed you down during recess, got you all muddy so you were late coming back to class, and stole your lunch money? (No? Maybe it was just me...) Anyway, that's kind of how we felt up in Canada last summer trying to climb Mt. Robson. That thing kicked our butts all over the playground.

We took off one evening in July, starting out on a 1200 mile road trip that took us to the northern tip of the Canadian Rockies to climb Mt Robson. Although its not much higher than our local peaks (just under 13000 feet), the serious climbing starts at a very low elevation and climbing it is a long and serious undertaking. The weather is the biggest factor and some years it goes unclimbed. We hoped for our "day in the sun" as it were. Actually, we hoped for 3 or 4.

Steve Walker, whose VW van we traveled in, was the trip leader. Barb Pollyea and I were the rest of the crew. The trip up was long and uneventful, with delightful overnight stops in an Idaho spud farm, and a Canadian park campground. As we drove up the Icefield Highway between Banff and Jasper, every peak was socked in with cloud and it rained the whole day. A harbinger of things to come. As we pulled into the "Mt Robson parking lot", and gazed up at those cliffs and snowfields, we felt very small. Robson was in our faces, daring us to come onto her corner of the playground. (yes, that 3rd grade bully was a girl) The sun was shining in the parking lot, but the peak was locked in cloud. We were not to even see the summit for several days.

One of the tricks of a playground bully is to lure you into coming closer. (Want some candy, kid?) We had a nice hike up the Valley of a Thousand Falls, with an overnight stay at one of the backcountry shelters. These are beautiful log shelters, some with walls, but all with covered tables and wood-burning stoves for our comfort. It was raining but with that luxurious shelter, who cared?

By the next afternoon, we had traveled 13 miles from the car, and were on the back side of Robson. Our intended route was the Wishbone Arete on the front side (we could see it from the car), but you can't get there from there. We had to hike around, climb up through some cliff bands, and then travel all the way back around again before we could climb our route. The Wishbone is mostly a rock route, with some ice and snow near the summit. The rock had looked in good condition, in fact so dry we were worried about finding water up high. We should have known that having enough water would not be a problem. Anyway, the Robson river flows out of Berg (as in "ice) Lake and braids out across a huge gravel flat, and we had to cross it. Easily waded, except its almost a mile wide and the afore mentioned Bergs made it just about 33 degrees. We were in agony by the time we were crossed. Of course it was raining. The bully had pushed us in the mud and got our clothes all wet.

Steve immediately got a fire going and we warmed up. Wet but warm. We determined to camp there next to the river, but head up immediately on a gear carry/reconnaissance trip. We loaded up food and climbing gear and scouted a way through the first cliff band, then were working on the second band when nastier weather and failing light turned us back. We cached the stuff and headed down.

Back in camp, we settled in for the wettest time I have ever experienced. I'm from Oregon, but I'd never seen wet like this! It never stopped raining. Our tent was a good one but it couldn't keep us dry. We constantly had to mop up puddles that formed under our pads, and wrap everything in plastic when we weren't using it. We kept the fire going, mostly for something to do I think. We never did get dry. (I have a great picture of Barb drying her red panties over the fire, dangling them from a ski pole.) After 2 more days of rain, we packed up and headed back across the river to "Chateau Berg", the luxury shelter on the shore of Berg lake. It seems we had been camped in a pocket of rain because it was sunny at the shelter, and we could see it continuing to rain over at our camp. We dried out and continued to wait for the weather to clear on the mountain. (The highlite of the trip so far was when Steve cooked us cheese and fresh garlic sandwiches. They were incredible!)

We decided that the Wishbone route was out of the question, and switched our plans to the Fuhrer Ridge (no relation to Adolf) route. The Fuhrer Ridge is the North Ridge of Robson, and is mostly a snow and ice route. Our logic was that we couldn't climb a rock route in the rain, but we could do a snow route in the snow! The next day, Steve took off back across the river and up the cliff bands to retrieve our cached gear, and I took off for the car to get more food and some specialized snow and ice climbing gear. I made the round trip 26 miles in about 8 hours, and almost died. I hadn't eaten enough as I ran, and when I got back and the adrenaline wore off, I got the shakes and could hardly move. Bless her heart, Barb waited on me hand and foot til I could stand again. (On the trail that day, I met a lovely lady hiker from Vancouver, Kati. She also aided in my recovery! We had a nice evening together, and we still pen-pal.) Meanwhile, Steve had had a big day. He retrieved the gear, and did a recon up to the high glacier we would climb. He was excited because the weather had cleared, conditions were good, and I had brought him a beer from the car! The bully was nowhere in sight, and it looked like we were going to get away with it.

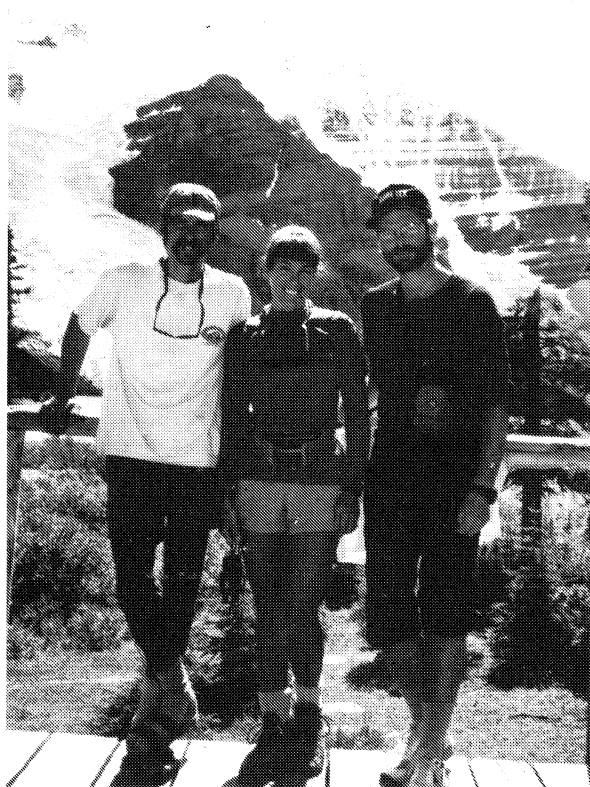
That night was the only clear night of the whole trip. Stars were shining, it was great. The next day was so brilliant and warm. We finally could see the summit of Robson, and took dozens of pictures. Nobody had summited yet this year, and we were next in line! We pack up and headed across the river. Again. We scrambled up a rock buttress which led up to the high glacier. Steve had climbed this part the day before, and said it went easy. We got up about 2 thousand feet and made camp. We were on a big but sloping rubble bench, and spent over an hour making a level tent platform. We set the alarm for 4am, planning to summit the next day.

As we stirred to life the next morning, I felt the bully's hand in my pocket, going for my lunch money. Would she never stop tormenting me? The tent was sagging under a load of 6 inches of fresh snow, and the peak was socked in again! The "easy" rock scrambling above us was now out of the question, and the ice slopes to the summit were now deadly avalanche paths, requiring days to safely stabilize. We had lost. We weren't in a position to wait it out anymore. Steve couldn't hide his frustration and let out a roar of anger that I'm sure set off a few avalanches.

With our clothes muddy, our noses bloody, and our lunch money gone, we called a retreat. We set up a rappel to bypass the tough scrambling, and abseiled down into the fog.

I could swear I heard her say, "Whatsa matter, kid, chicken? Run on home to yer Mommy!"

Well, I'm going to send away for that Joe Wieder body building kit, and **I'll be back.**



JANUARY 7, 1995
AUDREY KELLY
BEGINNERS
CROSS COUNTRY SKI
CLINIC

TIME: Sunday, January 7, 1995
9 am - Noon Instruction; Short Tour in Afternoon

WHERE: Uinta Mountains, along the Beaver Creek Trail

FOOD: Hot Lunch will be provided. A \$5.00 fee will be charged to cover lunch costs

MEET: Harry Kimbrough (288-2858) Has Information on the Meeting Time and Place, and will discuss clothing, what to expect, etc. with you prior to the day's activities.

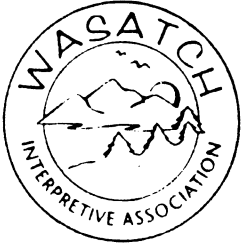
REGISTRATION is Required so we know how many Instructors are Needed. Interested in Instructing? Call Harry.

Here's how to order

"Winning The Avalanche Game"

VHS videotape

Please fill out this form and **mail** to:



Wasatch Interpretive Association
P.O. Box 526246
Salt Lake City, UT 84152-6246

or fax your credit card order to the:
Utah Avalanche Forecast Center
(801) 524-4030

Your purchase helps fund avalanche safety information and services.

Ordered by: _____

Shipping Address: _____

City: _____ State: _____ Zip: _____

Daytime Phone: _____ Home Phone: _____

Payment enclosed:

_____ Money Order (Payable to Wasatch Interpretive Association)

_____ Check (Payable to Wasatch Interpretive Association) Orders paid by check may be delayed for clearance.

Charge my: _____ Visa _____ Mastercard

Account Number _____

Expiration Date: _____

Your Signature: (required) _____

Note: Credit card order cannot be processed without signature.

Quantity _____ \$19.95 each in United States	Quantity _____ \$25.00 each in Canada
<div>Add Shipping and Handling charge: <div>Priority mail in U.S. + \$5.00 per video . \$3.00 per additional video</div></div>	<div><div>First Class air mail Canada + \$10.00 per video \$ 4.00 per additional video</div></div>
TOTAL \$ _____	TOTAL \$ _____

WHAT AVALANCHE???
I DIDN'T SEE IT COMING. NEXT TIME I'LL KNOW BETTER...


The Robert Frohboes

AVALANCHE AWARENESS AND SAFETY SEMINAR AND AVALANCHE BEACON PRACTICE

Is Just Around the Corner

- Lecture:** Wednesday, January 24, 1996 7:30 PM
First Unitarian Church
6th South 13th East
\$5.00 donation requested
- Practice:** Saturday, January 27, 1996 12:00 Noon
Butler Elementary School to carpool up
Big Cottonwood Canyon
- Contact:** Ski Director Brian Barkey (394-6047) for
Information or to help with the Beacon Practice

*Presented by the Utah Avalanche Forecast Center
for the
Wasatch Mountain Club*



Westbrooks Ski Crampons for cable bindings

Excellent for climbing or traversing crusty or icy slopes.
You will be amazed at how much easier these crampons
make the process of climbing or traversing crusty slopes.

Westbrooks Investments

27 E. 500 N.
Tooele, Utah 84074
801-882-6129

75⁰⁰

SNOW SHOE RATINGS

RATING	TOUR LOCATION
NTD-	Donut Falls
NTD-	Lake Mary
NTD-	Albion Basin Road
NTD-	Mill Creek Road
NTD-	Willow Lake
NTD	Alta Ski Area
NTD	Lower Neffs Canyon
NTD	Lower Church Fork
NTD	Greens Basin (from the Spruces)
NTD	Lower Silver Fork (from Silver Fork Lodge)
NTD	Beaver Creek Trail (Uintas)
NTD+	Scotts Pass (park at Solitude lot)
NTD+	Lower White Pine
NTD+	Catherine's Pass (from Alta)
NTD+	Dog Lake (from Big Cottonwood)
NTD+	Lower Mineral Fork
MOD	Days Fork to second meadow
MOD	Catherine Lake (from Brighton)
MOD	Desolation Lake (from Big Cottonwood)
MOD	Red Pine Lake
MOD	Twin Lakes Pass (from Brighton)
MOD	Snake Creek Pass
MOD	Big Water via Dog Lake
MOD	Little Mountain (Emigration Canyon)
MOD+	Broads Fork
MOD+	Lake Blanche
MOD+	Maybird Lakes
MSD	Upper Red Pine Lake
MSD	Powder Park
MSD	Greens Basin Peak
MSD	Bear Trap to Lookout
MSD	White Pine Lake
MSD	Dog Lake to Little Water and out Beartrap

Utah Avalanche Forecast Center
SLC: 364-1581 details 364-1591
Park City: 649-2250
Logan: 752-4146
Ogden: 621-2362
Provo: 374-9770

SNOWSHOE RENTAL RATES

(rates are for 1 & 2 day rentals)

Kirkhams (486-4161) 3125 So. State -- Tubbs, Atlas, Redfeather @ \$7 / \$5

REI (486-2100) 3285 East 3300 So. -- Tubbs (new rates coming) @ \$8* / \$6*

Rock & Road Cycles (466-0098) 6185 So. Highland Dr. -- Atlas @ \$8

Sidsports (486-9424) 3025 East 3300 So. -- Yuba @ \$8

Sports Den (582-5611) 1350 So. Foothill Dr. -- Tubbs @ \$8

Wasatch Touring (359-9361) 702 East 100 So. -- Tubbs, Redfeather @ \$6

Wild Rose (533-8671) 702 3rd Avenue -- Tubbs, Redfeather @ \$8

Mekan Boots (272-4710) 2070 East 3900 So. -- Yuba @ \$7 / \$5; (kids sizes) @ \$5 / \$4; Northern Lites @ \$8.50 / \$7

Jans Mtn. Outfitters (1-649-4949) Park City -- Redfeather @ \$15

White Pine Touring (1-649-8710) Park City -- Atlas @ \$8



OUTDOOR FOOTWEAR

Snowshoe Rental • Shoe Repair Shop
Climbing Shoes • Sport Sandals • Hiking Boots

**Give Us
The Boot!**

Your old telemark
boots are worth

\$\$\$

(even if they stink)
we buy and sell
used telemark
boots!

**10%
OFF**

Get 10% off
climbing shoe
repairs through
the month of
December.

3900 South 2070 East
Salt Lake City, Utah 84124 (801) 272-4710



CHRISTMAS IS JUST AROUND THE CORNER!!!

THIS HOLIDAY SEASON THE WASATCH MOUNTAIN CLUB IS "ADOPTING"

A LOCAL NURSING HOME AND

WE NEED YOUR HELP

**TO PROVIDE A SMALL GIFT FOR
THE 26 RESIDENTS WITHOUT FAMILY SUPPORT**

**PLEASE PLAN TO JOIN US ON
THURSDAY DECEMBER 14, 1995 @ 6:30 P.M.
(WE WILL BE MEETING AT ALTA CARE CENTER 4035 S. 500 E. IN MURRAY)
TO DECORATE THE FACILITY AND
SING CHRISTMAS CAROLS WITH THE RESIDENTS**

**DONATIONS ACCEPTED AT ALL WMC SOCIALS IN NOVEMBER AND
DECEMBER THROUGH DECEMBER 9, 1995**

**IF YOU ARE PLANNING TO DONATE EITHER MONEY OR A GIFT OR
DECORATIONS, PLEASE CALL KRIS OR LIZ BEFORE DECEMBER 9TH
SO THAT WE CAN GET AN IDEA OF HOW MANY GIFTS TO PLAN ON.**

gift suggestions:

*socks
games
photo albums
calendars
combs
long bibs to cover laps
wallets
make-up
pictures for rooms*

*shawls
stationary
trinkets for room
lap robes
beauty supplies
cotton underwear
hand creams and lotions
sweat shirts/pants
mobiles for bedridden residents*

*playing cards
stamps
coin purses
slippers
belts
hats
handkerchiefs
perfumes/colognes
clocks*

**THANK YOU IN ADVANCE FOR SUPPORTING THIS SERVICE PROJECT. FOR MORE
INFORMATION CALL KRIS TAYLOR @ 568-0398 OR LIZ CORDOVA @484-3740 (IF NO
ANSWER PLEASE LEAVE MESSAGE.)**



75 YEARS AND COUNTING

by Phyllis Anderson

Thanks to a virtual **ARMY** of volunteers, the August celebration of the Club's 75th anniversary was an enormous success!

Our week was kicked off on August 3 by Governor Leavitt's signing of a proclamation declaring Wasatch Mountain Club Week. About 25 members (give or take 20 - I'm a poor judge) crowded into the governor's office where we were warmly received by our very personable governor, and we were given ample photo opportunities. President Nance Allen spoke on behalf of the Club, and we enjoyed the banter between the governor and Noel DeNevers, who composed the original proclamation for the Club's 50th anniversary, and Harold Goodro, who was also present 25 years ago when Noel's proclamation was signed by then governor Calvin Rampton. My special appreciation goes to Reece Stein who brought a photographer to video tape the occasion, and presented the Club with the rough footage for our archives. Then Reece went the extra mile (literally!) by joining us for our Thursday night hike and shooting his own video so that he could air our story on Channel 2. KUTV was the only TV station to give us air time.

Our Monday night activity was a bike ride organized by Rick Kirkland and led by Pam Earle. On Tuesday, there were two events. Alexis Kelner presented a "campfire talk" in the amphitheater at Storm Mountain, which was coordinated by Pete Mimmack and Leslie Woods. Those in attendance were rewarded by a fine program with slides and narrative on the "History of Mountain Recreation in the Wasatch". An equally fine choice was a canoe trip on the Jordan River, single handedly planned and executed by Janis Huber, who among other things loaded and transported a trailer with 8 canoes.

Brad Yates solicited his hiking committee to plan Wednesday night hikes, which were handled by Mike Eisenberg. Sunday hikes in the Brighton area, which followed our pancake breakfast, were led by Brad, Pat Kottcamp, and Tom Silberstorff.

The focal point of our week was a reception held at Memory Grove on Thursday, August 10. With the help of Emily Hall, Jean Treshow, and Nance Allen, invitations were sent to local dignitaries. We were pleased that Mayor Deedee Corradini, former Senator and Mrs. Frank Moss, and Forest Service District Ranger, Mike Sieg graciously accepted. O'Dell Petersen, with his wife Edith, was recognized as the Club's oldest member, having joined in 1928. Approximately 140 people attended the reception and the credit for the success of the evening goes to many members! Sam Kievit wrestled with the reservation list. A marvelous photo display was assembled by Alexis Kelner, with help from his wife, Karla, and from Larry Swanson and Sharyl Smith. Rob Snow provided a public address system and dance music for those who stayed later in the evening. Guards at the gate, who encountered some pouring rain, were Alan Brennan, Bill Franks, Mike Budig, and Tom Munn. Tom also picked up beer which was kindly donated by Red Rock Brewing Co. Our official greeters were Lee and Phyllis Steorts and Ilka and Allen Olsen. Denna Wright, Vilma Lewis, and Kris Taylor provided beautiful flower arrangements for the tables, and my thanks to Bob Wright for helping to set up the tables and chairs. Our merchandizing booth was manned/womaned by Jim Piani, Leslie Whited, and Felecia Kulsic. To record the evening, pictures were taken by Barbara Richards and Alexis Kelner. Remarks were made by Nance Allen and Mayor Corradini, and Dennis Caldwell delivered a factual, and often humorous, history of the Club which **absolutely** deserves to be printed in its entirety. **Watch for this in a future Rambler!**

On Friday morning, Leslie Whited, with the help of more volunteers, took toddlers from the Homeless Shelter for a hike and lunch at the lodge. By all reports, it was a successful and moving experience for everyone. As I was unable to take part, Leslie will provide a write-up and acknowledgment of her support staff. **Watch for this one, too!**

About a dozen hardy mountain clubbers met Chris Biltoft at the lodge on Saturday morning to do trail clearing on the Clayton Peak trail, obscured in recent years by the construction of ski lifts at Brighton. Having led a hike to Clayton Peak in September, I can vouch for the efforts of this fine work crew. Participants were Cassie Badowsky, Mary Fleming, Pat Kottcamp, David Boyd (a Club legacy, being the son of deceased member Elmer Boyd), Rob Rogalski, Mike Budig, Randy Long, Sean Walton, Joan Proctor, Tim Seeley, and Marc Considine.

Saturday night brought the traditional Old Timer's Party at the lodge, expertly organized and lovingly prepared by Karin Caldwell and Ruta Ehlers, with lots of assistance from Dennis Caldwell, Bob Ehlers, Larry Swanson, Sharyl Smith, Margaret McEwen, Judy Hendrickson, Karla Kelner, Margo Hovingh, and Eveline Bruenger. Leslie Woods took reservations, which was no small accomplishment due to the overwhelming response of members desiring to attend. Regrettably, after squeezing 120 people into the lodge for a sit-down dinner, a number of people had to be turned away, for which we truly apologize. Pete Mimmack earned kudos for providing a shuttle service for older members for whom the hike from the parking lot to the lodge can be difficult. Once again, Alexis Kelner erected his photo exhibit, and further provided TV monitors in order to view old movies which he had transferred from film to video tape, not only for our current enjoyment, but for preservation of this old footage.

Sunday morning found us back at the lodge, about which Craig McCarthy wrote the following. "The last day of the 75th anniversary celebration week was kicked off with a pancake breakfast. Activity leader Linda Kosky and a dedicated group of volunteers arrived at the lodge before dawn to organize the event, and began "flippin" flapjacks. Several hours and hundreds of pancakes later, over 100 people were fed and off on one of the numerous hikes that originated at the lodge that day. Many thanks go out to Linda and her "early riser" crew: Ken Engstrom, Lori Ball, Kris Taylor, Jeannine Kuhn, Dolores Case, and Craig. We hope that these types of events can continue to occur as it was great to get everyone together at the WMC lodge!"

So that was our week -- and what a week it was! I gratefully acknowledge early support and encouragement from Dale Green, Oscar Robison, the Treshows, and Randy Long, who attended early planning meetings.

As most of you know, merchandizing played a major part in our celebration. I could never express my full appreciation to Gloria Leonard for all the hours she put in and the miles she racked up driving all over town to get our orders filled. As she bemoaned at one point, "If I'd had any idea what I was getting into, I would never have volunteered!" I'm just thankful that she did. My thanks also to Gary Myers for some late night art work, and to Dale Green and Mark Jones for furnishing the photo used on the T-shirts. Our merchandizing, and club participation in general, so exceeded my expectations that even though all events were free of charge except for the reception, the Club will ultimately pay only a few hundred dollars in expenses for the entire week! (Incidentally, I still have 1 medium short-sleeved T-shirt, 3 hats, and about a dozen visors, so if you missed out, it's not too late!! Just give me a call at 943-8500.)

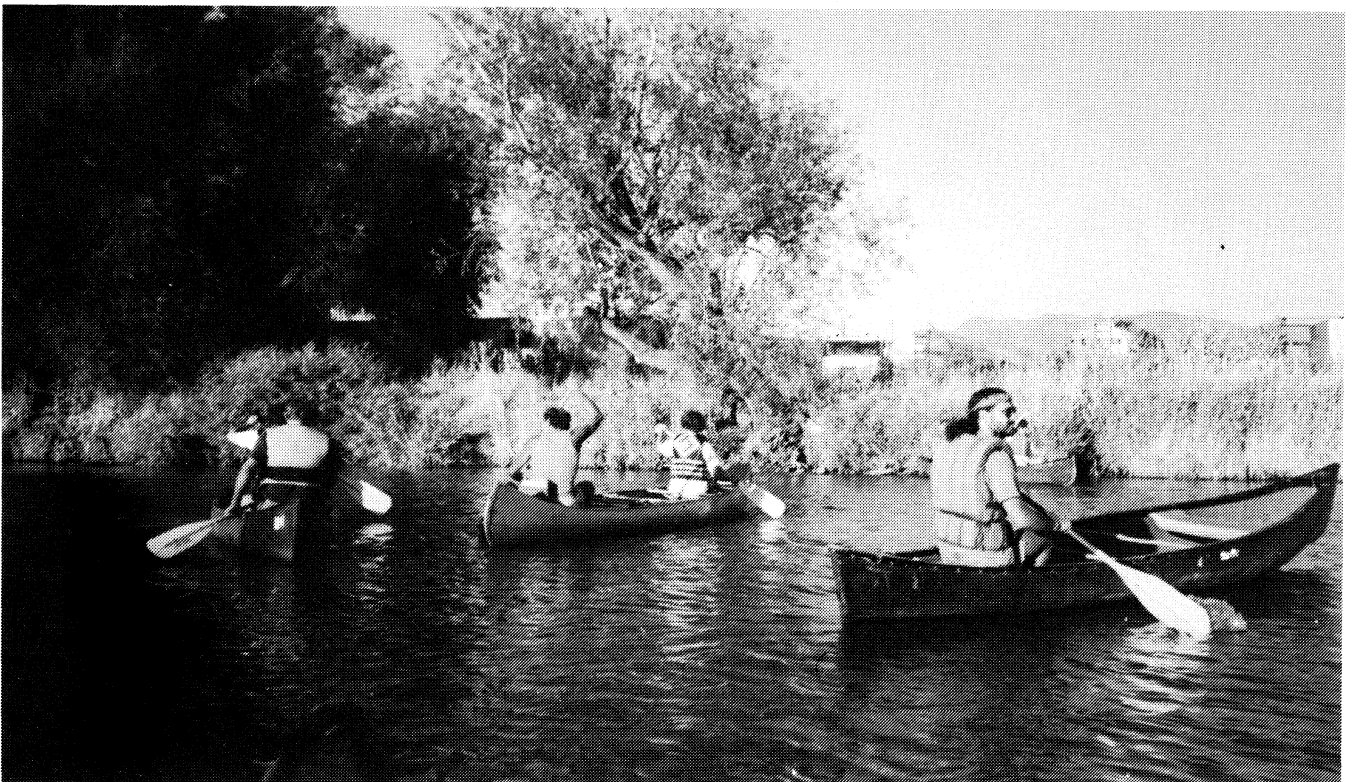
Others who deserve special recognition are Ann Wechsler and Mike Treshow. Ann made wonderful press packets and worked with Tom Wharton on the very fine article he wrote for the Tribune. And Mike spent countless hours in the Marriott Library, extracting the Club history from the nearly complete set of Ramblers which are filed there and date back to the 1920's. Mike continues to work on this project and is in the process of editing so that the WMC history can

be published in book form at a later date. The rough draft is **fascinating** reading and I anxiously look forward to the final product.

Lastly, I commend Jim Zinanti and Reda Herriott for the commemorative issue of the August Rambler which I am certain will be kept and treasured by many members.

I have no doubt inadvertently omitted someone who richly deserves praise for helping to make our 75th anniversary such a wonderful

success and I apologize in advance. For me it was a labor of love which ultimately offered a unique opportunity to try to repay some of the happiness and fulfillment which the Club has brought me for the past 29 years. I have no friendships that I value more highly than those fostered in the Wasatch Mountain Club. My heartfelt thanks to you all.





O'Dell and Edith Petersen at the 75th anniversary reception



Alexis and Carla Kelner at the 75th anniversary reception

Please Complete Both Sides

Wasatch Mountain Club
New Member/Reinstatement of Previous Members Application
Do Not Use this Form for Regular Annual Membership Renewal

Please read carefully and fill out completely.

Name(s) _____
(First) (Last)

Address _____ City _____ State _____ Zip _____

Check phone number ☐ Residence: _____ Other ☐ Do not print my name/phone in membership list.
to print in Rambler Options: ☐ Do not list my name in lists given to Board
membership list: ☐ Work: _____ approved conservation/wilderness organizations.
e-mail: _____

I am applying for:

Check one:

_____ New Membership
(Please complete activity section.)
_____ Reinstatement

_____ Single Birth date(s) _____
_____ Couple _____
_____ Student (30 years or younger)

Remit: \$35.00 for single membership (\$30.00 dues, plus \$5.00 application fee)
\$50.00 for couple membership (\$45.00 dues, plus \$5.00 application fee)
\$20.00 for student membership (\$15.00 dues, plus \$5.00 application fee)

Enclosed is \$ _____ for one year's dues and application fee. Checks/money orders only. Make checks payable to **Wasatch Mountain Club**. Do you wish to receive the Rambler (the Club publication)? ☐ Yes ☐ No
(Subscription price is NOT deductible from the dues.)

Activity Section

You must complete two Club activities (other than socials) to be considered for membership. The activity dates must have been within one year of the application.

<u>Qualifying Activity</u>	<u>Date</u>	<u>Signature of Recommending Leader</u>
1. _____	_____	_____
2. _____	_____	_____

I found out about the WMC from _____

Mail application and check to: Membership Director
Wasatch Mountain Club
888 South 200 East, Suite 207
Salt Lake City, UT 84111-4220

Leave Blank—For Office Use Only

Receipt/Check # _____ Amount Received\$ _____ Date Received _____ By _____

Board approval date _____

WASATCH MOUNTAIN CLUB (WMC)

Applicant Agreement, Acknowledgment of Risk, and Release from Liability

VOLUNTARY PARTICIPATION: I acknowledge that my participation in any WMC activity is voluntary. No one is forcing me to participate.

ASSUMPTION OF RISK: I am aware that WMC activities involve risks, and could result in injury, illness, death, and damage or loss of property. These dangers include but are not limited to: the hazards of traveling in remote areas without medical services or care, the forces of nature, the inherent dangers involved in participation in sports, wilderness travel, and social activities, and the negligent actions of other persons or agencies. I understand that all activities should be considered "exploratory", with the possibility of unexpected conditions and route variations. The WMC is not, nor does it provide, a professional guiding service. In order to partake in the enjoyment and excitement of WMC activities, I am willing to accept the risk and uncertainty involved as being an integral part of the activity. I acknowledge this risk, and assume full responsibility for any and all risks of injury, illness, death, or damage and loss to my property.

I verify this statement by placing my initials here: _____

PREPARATION: I understand that it is my responsibility to evaluate the difficulty of any activity I participate in, and decide whether I am prepared by having the experience, skill, knowledge, equipment, and the physical and emotional stamina to safely participate.

RELEASE OF LIABILITY AND PROMISE NOT TO SUE: I agree that I, my heirs, and personal or legal representatives hereby do release and hold harmless from all liability, and promise not to bring any suit or claim against, the Wasatch Mountain Club, its leaders, directors, agents or representatives for any injury, illness, death, or damage and loss to property resulting from my participation in any WMC activity even if they negligently caused the injury or damage.

LEGAL FEES: Should it become necessary for WMC, or someone on their behalf, to incur attorney's fees and costs to enforce this agreement, I agree to pay WMC reasonable costs and fees thereby expended, or for which liability is incurred.

INSURANCE: I certify that I have sufficient insurance to cover any bodily injury or property damage that I may incur while participating in any WMC activity. If I have no such insurance, I certify that I am capable of paying for all such expenses and liabilities.

My signature below indicates that I have read this entire document, understand it completely, understand that it affects my legal rights, and agree to be bound by its terms. I am at least 18 years old.

Signature _____ Print name _____

Address _____

Phone _____ Date _____

WITNESS: I certify that _____ has alleged to me that he\she has read and understands this document.

Witness signature _____ Print name _____

Address _____

Phone _____ Date _____

ACTIVITY SURVEY

WOULD YOU LIKE TO LEAD?

All of the Club's activity leaders are volunteers. You can be a leader too—just check off the activities you want to lead, and we'll give you a call. Help your Club and have fun too!

- Hiking:** ☐ easy day hike ☐ moderate day hike ☐ advanced day hike ☐ car camp
 ☐ backback
- Boating:** ☐ trip leader ☐ instruction ☐ equipment ☐ sailing
- Skiing:** ☐ NTD tour ☐ MOD tour ☐ MSD tour ☐ out of town trip
- Climbing:** ☐ Wasatch climb ☐ out of town trip ☐ winter mountaineering
- Bicycling:** ☐ road bike tour ☐ mountain bike tour ☐ camping tour
- Other outings:** ☐ snowshoe tour ☐ caving ☐ other

WOULD YOU LIKE TO SUPPORT?

The Club also depends on volunteers for all the rest of its work. Some of this work is critical to the day-to-day functioning of the Club; some of it is important to our community; some of it is just fun. You can let us know how you'll help by checking off activities below.

- Conservation:** ☐ air and water quality issues ☐ trailhead access ☐ wilderness
 ☐ telephone tree ☐ trail clearing
- Socials:** ☐ social host ☐ Party assistance ☐ lodge host
- Rambler:** ☐ word processing ☐ mailing ☐ advertising ☐ computer support
- Lodge:** ☐ general lodge repair ☐ skilled lodge work
- Information:** ☐ public relations ☐ membership help ☐ recruiting ☐ instruction

Would you like to participate on an activities committee? Which one?

Is there a special trip or activity you would like to lead?

What phone numbers can we use to reach you?

Utah Avalanche Forecast Center
Wasatch Front
Park City Area
354-1581
649-2250

WASATCH MOUNTAIN CLUB
888 South, 200 East, Suite 207
Salt Lake City, UT 84111-4220

SECOND CLASS
POSTAGE PAID
SALT LAKE CITY, UT