



**COME
COME
COME**

**TO THE WMC GENERAL
MEMBERSHIP MEETING**

**YOUR HELP IS DESPERATELY
NEEDED TO GUIDE YOUR
CLUB TO BECOME THE BEST
MOUNTAIN CLUB IN
AMERICA.**

**Thursday, Feb. 15,
1996**

**The First Unitarian
Church,
532 South on 1300 E.**

7:30 pm

The Rambler

February 1996

**VOLUME 73, NUMBER 2
Printed on 100% Recycled Paper**

Managing Editors

Jim Zinanti, Reda Herriott, and Dr. Mau

ADVERTISING Reda Herriott
CLASSIFIED ADS Sue deVall
MAILING Harry Kimbrough
PRODUCTION Jim Zinanti, Reda Herriott, and Dr. Mau

The Rambler (USPS 053-410) is published monthly by The WASATCH MOUNTAIN CLUB, Inc., 888 S., 200 E., suite. 207, Salt Lake City, UT 84111-4220. Telephone 363-7150. Subscription rates of \$12.00 per year are paid for by membership dues only. Second class postage paid at Salt Lake City, Utah.

POSTMASTER: Send address changes to *The Rambler*, Membership Director, 888 S., 200 E., Salt Lake City, UT 84111-4220. CHANGE OF ADDRESS: This publication is not forwarded by the Post Office.

The right is reserved to edit all contributions and advertisements and to reject those that may harm the sensibilities of WMC members or defame the WMC.

Copyright 1995, Wasatch Mountain Club

Office Hours: 9:00 am - 1:00 pm Wednesday
363-7150

Address: 888 S., 200 E., Suite. 207
Salt Lake City, UT 84111-4220

Office Asst.: Jean Frances

PROSPECTIVE MEMBER INFORMATION

Applicants must attend two official WMC activities other than socials. Activities are listed in *THE RAMBLER* which is the official publication of the Wasatch Mountain Club, published by and for its members. Prospective members may receive *THE RAMBLER* for two months by writing the Membership Director at the above address and enclosing a check for \$5.00 payable to the Wasatch Mountain Club. (There is a \$10.00 charge for returned checks.) An application form may be found in the center of *THE RAMBLER*. Ask the activity leader to sign your form after completing the activity.

MEMBERS: If you have moved, please call the WMC office or send your new address to the Membership Director. Allow 45 days for address changes. If you did not receive your *RAMBLER*, contact the Membership Director to make sure the WMC has your correct address. Replacement copies are available, while they last, at the WMC office during office hours.

TO SUBMIT AN ARTICLE or PHOTOGRAPH: Articles should be on diskette, MS/DOS or Macintosh format, and preferably in Microsoft Word or WordPerfect form. Label the diskette with your name and identify what file(s) are submissions. Enclose a hard copy in case your diskette cannot be read. Mail submissions to Publication Director at the office address, or hand deliver them to the WMC office. Leave hand deliveries in the **Blue** box outside the door. The deadline is 6:00 pm on the 15th of the month. Photos of all kinds, B&W and color prints, and slides. Make sure that the photo is labeled with the photographer, date, and names of people. Unless a stamped, self-addressed envelope is provided, returned submissions will be available in the **Red** box outside the office door about 1 week after publication.

WMC Home Page

<http://www.drmpark.com/~wmc>

The Rambler - February 1996 Vol. 73 No. 2

Contents

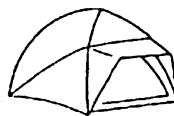
Bulletin Board	4
Classy Ads	4
WMC Lodge Rental	4
Tennis Network	5
WMC Official Hiking Map	5
Wasatch Mountain Club Activities	6
From the Boating Director	13
Wasatch Front Forum: Bonneville Shoreline Trail	13
Avalanche Beacon Prices	14
Winter Sports Parking	15
New Things Happening on WMC Web Page	15
Governing Board	16
Commercial Advertising Rates	16
Governing Board Nominations	16
Coming Attractions	17
Trip Talks	18
Membership Application	21

WMC Purpose

(Article II of the WMC Constitution)

The purpose shall be to promote the physical and spiritual well being of its members and others by outdoor activities: to unite the energy, interests and knowledge of students, explorers and lovers of the mountains, deserts and rivers of Utah; to collect and disseminate information regarding the Rocky Mountains in behalf of science, literature and art; to explore and picture the scenic wonders of this and surrounding states; and to foster awareness of our natural areas including their plants, animal and bird life.

Sewing Repairs on Outdoor Equipment & Clothing



Sue deVall
(801) 572-3294



11730 South 700 West • Draper, Utah 84020



COMING ATTRACTIONS! February

SUNDAY	MONDAY	TUESDAY	WEDNESDAY	THURSDAY	FRIDAY	SATURDAY
	Buy your Springbar Tent BEFORE prices increase on February 12th! SAVE up to \$30.00 just by buying now!			1	2	3
4	5	6	7	8	9	10
				Cross Country Ski BLOWOUT! 20% to 40% OFF EVERYTHING!		
11	12	13	14	15	16	17
					Vasque Alpha Sale! Low Cut Hikers from \$24.99!	
18	19	20	21	22	23	24
	Vasque Sale Continues			Outdoor Video Film Festival! The <u>Best</u> Action in • Skiing • Mountain Biking • Climbing Refreshments See 'em on a BIG SCREEN TV! Great Deals On Videos You Can Preview!		
25	26	27	28	29		
	Festival Continues					



Call Kirkham's at
486-4161
For More Information!

3125 South State Street

Open: Monday - Friday 9:30 to 9:00 Saturday to 7:00



BULLETIN BOARD

WMC LODGE AVAILABLE FOR RENTAL USE

The WMC Lodge can be rented on a half or full day basis. Full day rate is \$225. Contact Rich Osborne (1-801-647-0205) for information.

BACK BY POPULAR DEMAND

THE ENTRADA INSTITUTE PRESENTS

THE UNKNOWN HISTORY OF GLEN CANYON

Friday - February 23
Two Shows - 7:00 & 9:00 p.m.

Westminster College

GORE SCHOOL OF BUSINESS AUDITORIUM

Native Americans, gold miners, river runners, outlaws and hermits — **Glen Canyon** was rich in human history. **Barry Scholl**, author and associate editor of *Salt Lake City* magazine, **François Camoin**, photographer and author, and **Larry Clarkson**, graphic designer and president of the **Entrada Institute**, will present a slide show, videotape presentation and lecture on the cultural and natural history of **Glen Canyon** before its inundation by the dam, which created **Lake Powell**. With Fiddle Music by **William Barclay**

SEATING IS LIMITED. Tickets are available for a \$4 donation **A Woman's Place Bookstore** at **Cottonwood Mall** and **Foothill, Clarkson Creative** and at the **door**.

For more information call **ENTRADA** at (801) 467-9994.

EntRada

Classy Ads:

Notice: *The Rambler* cannot accept any ad that is inconsistent with the purposes of the WMC or offends the sensibilities of Club members. Send your ad, with enclosed payment if required, to **Sue DeVall**, 11730 S., 700 W., Draper, UT 84020. Please submit by the 12th of the month to ensure your ads inclusion. Advertising rates are \$5.00 for up to 20 words and 20¢ for each additional word. WMC members may place **free** ads for used recreational gear or for private **non-commercial and not-for-profit** activities.

DATA ENTRY VOLUNTEER NEEDED !!!!!!!

The Club is in need of willing or competent or skilled (in that order) data entry people to help keep our data-base current as we receive new membership applications and renewals. The work load will be 100-200 renewals (minimal data entry per item) and 20-30 new applications (moderate data entry) each month. For a quick typist, this isn't a lot. (For me, its weeks!) If you can help, even for a small bit of time each month, please call **Kyle Williams** 273-8076

FOR SALE -10 - Brighton Lift Tickets. \$20.00 each. Will sell all or part. Call **Bob** at 481-6512 (w) or 466-3510 (h)

FOR SALE Exercise Equipment. Avenir wind trainer. Very good condition \$50.00 OBO. Call **Oscar** (547-1559).

FOR SALE Skis. 180 cm. Karhu GT SCD full metal edges. Rotafella nnn back country auto bindings. First \$125. takes. Call **Sue** 572-3294.

FOR SALE. Gary Fisher Gemini **Tandem Mountain Bike.** 20" x 18", Kevlar belted City Slicks, rack, bottle cages, pump, speedo, road rings and Micro-drive rings, Sun-Tour components, matte black. \$1300 OBO. call 533-0989.

FOR SALE. New Touring Skis, Fisher E99 Crown waxless, metal edged with nnn bc bindings. 205 cm. Brand new. Retail for \$325. Will sell for \$225. Call 265-8579.

TENNIS NETWORK

We are a group of WMC members that play tennis regularly. Our levels range from 2.5 - 4.0. If you are interested in playing during the cold winter months, please contact Jeri at 561-3777.



WMC OFFICIAL HIKING MAPS

Copies of the official WMC Map, "Hiking The Wasatch" are available to WMC members at a discount. The map retails for \$10 but members can obtain copies for \$8.50 including sales tax. The Club also profits from these sales. The maps are available at the WMC office during office hours and on many WMC activities.

Thank You

To all the thoughtful, generous people who donated their time, talents and resources to the Residents of Alta Care Nursing Home this Holliday Season.

REI Outdoor Adventure Calendar 3285 East 3300 South, Salt Lake City Telephone (801) 486-2100

February 1, 7:00 PM
Bonneville Bicycle Touring Club
For more information, call 534-4451

February 6, 7:00 PM
Trekking Nepal
Jim Willis recounts his recent adventure.

February 8, 6:00 PM
Wasatch Camera Club
Additional Information, call 467-8732

February 13, 7:00
Beyond Fear
A Journey Across New Guinea

February 16-17, 1996
Exum Backcountry Ski Class
For more information, call 944-5493

February 15, 7:00 PM
Utah Whitewater Club
Call Rod Huck at 355-4126 (d) for details



January 1996

WASATCH MOUNTAIN CLUB ACTIVITIES

Only activities approved by the appropriate WMC director can be listed in the Club activities section of *The Rambler*. Send your proposed activity for approval to the hiking, boating, skiing, etc., director for inclusion in their activity schedule. Those activities sent directly to *The Rambler* without approval will not be published.

*** Participation in any WMC activity can be dangerous. It is your responsibility to evaluate your own preparedness and ability to safely participate in any activity.

*** On ski tours requiring avalanche transceivers, be advised that this season, only beacons compatible with the new international frequency standard (457 kHz) will be accepted on WMC ski tours.

FEB 1 Thu

SOCIAL: MOONLIGHT SKI TOUR (NTD-) Full moon cross contry skiing on the Bonneville gold course (beginning level) Meet at the entrance to the course on Conner (one block east of Foothill and just south of Sunnyside - about 1000 S., 2050 E.) We'll begin at 6:30 pm. Bring a flashlight for equipment adjustments. Dogs and kids with responsible adults are ok. Call beforehand if there is minimal snow, we may go to an alternate location. Afterward, we'll retire to the fine pastries, hot drinks, and other goodies of The Bakery or other local eating establishment. Contact Frank (533-9219) with any questions.

FEB 2 to 3 Fri-Sat

SKI TOUR: TOMASAKI CABIN IN THE LA SALS Steep and Deep! With good snow the runs are long and fast, with 2000' vertical exposure just outside the door. Pack in on Friday, stay Friday and Saturday nights and depart Sunday afternoon. Capacity is 10 people. Cost is undefined at press time but is reasonable. Call the yurtmeister, Tom Walsh (969-5842 after 7:00 pm) to sign up.

FEB 2 Fri

SOCIAL: SING-A-LONG (NTD!!) Join Frank Bernard (533-9219) at 7:00 pm for this third session of the Winter season of folk and joke singing. Bring your voice and/or guitar to Frank's home at 417 N Center St. in Capitol Hill (about 130 W., 400 N.) and we'll entertain ourselves in this 100% audience participation event. Bring your own beverages and snacks - an enthusiastic attitude is the only requirement! If you have any questions, call Frank (533-9219).

FEB 3 Sat

SKI TOUR: DESERET PEAK (MSD) with George Westbrook (942-6071) Call to register and get the details about the very early start. This peak offers some great views of Rush Valley and the West Desert with some long bowls on the descent. Avalanche beacons, skins and shovels required.

FEB 3 Sat

SKI TOUR: LEADERS CHOICE (MOD) with Levi Todd. (278-3644) Meet at Lot #4 on Ft. Union Blvd. (about 3600 E) at 9:00 am. Levi is hoping to do Wolverine Bowl, but is leaving his options open depending on snow and weather conditions. Hopefully everyone will have the new single frequency or dual frequency beacons and of course, skins and shovels.

FEB 3 Sat

SKI TOUR: LOWER GREENS BASIN (NTD) with Oscar Robison. (547-1559) Meet at the Butler Elementary school Parking lot (2700 E. 7000 S) at 9:00 am. This is normally an excellent area for MOD or NTD tours. Pieps and shovels are not required, but bring them if you have them. Also, sturdy back-country equipment and skins are required. (none of that wimpy track stuff please!).

FEB 3 Sat

SNOWSHOE: DOUGHNUT FALLS (NTD/EL) Dallas Chopping (292-6298) will be leading a family snowshoe tour to Doughnut Falls up Big Cottonwood Canyon. Meet Dallas at Butler Elementary at 10:00am.

FEB 3 Sat

SNOWSHOE: LEADERS CHOICE (MOD+/MSD) Carolyn Clark (work phone 957-3238) will be leading today's heavy workout tour. Beacons are recommended. Call Carolyn to pre-register and get more details. Meet at skyline High's east parking lot at 9:00am.

FEB 3 Sat

SNOWSHOE: SNAKE CREEK PASS (MOD) Anne Boeder (486-6368) will be leading today's attempt on Snake Creek Pass. This snowshoe tour is rated as moderate by those who really know. Meet Anne at Butler Elementary at 9:30am.

FEB 4 Sun

SKI TOUR: DANIEL'S PASS (NTD) with John Veranth. (278-5826) Meet at the K-Mart parking lot on Parley's way at 9:00 am. This is an excellent area east of Heber with gentle terrain.

FEB 4 Sun

SKI TOUR: LEADERS CHOICE (MSD) with Dave Smith (572-0346) Call Dave for details about a long, strenuous and rewarding day. Avalanche beacons skins and shovels are required.

FEB 4 Sun

SKI TOUR: REYNOLD'S PEAK (MOD) with Mark McKenzie (486-4986) Meet at Lot#2 on Ft. Union Blvd. (about 3360 E) at 9:00 am. Mark will leads folks to this excellent area with consistently good snow in the Dog Lake area north of Big Cottonwood Canyon. Avalanche beacons (457 khz compatible please) skins and shovels required.

FEB 4 Sun

SKI TOUR: WASATCH PLATEAU VIA FAIRVIEW CANYON. (MOD) with Brad Yates (583-1205) Meet at the Park and Ride Lot at 7200 South and I-15 at 7:00 am. Brad, our esteemed hiking director, describes this place as a large plateau with numerous bowls descending from it. As this area is west of Price, a very early start is required. Avalanche beacons (457 khz compatible please) skins and shovels required.

FEB 4 Sun

SNOW REMOVAL AT THE LODGE 2:00 pm Please call Martin (968-1252 or 942-8902) to confirm before driving up.

FEB 4 Sun

SNOWSHOE: DAYS FORK (NTD) Join Barry Quinn (272-7097) on another fun filled snowshoe tour up popular Days Fork in Big Cottonwood Canyon. Meet Barry at Butler Elementary at 9:30am.

FEB 4 Sun

SNOWSHOE: LAKE BLANCHE (MOD+) Lady Leslie Woods (484-2338), the Princess of the Mountains to the skiers, is a real stomper on the "shoes" when she leads snowshoe tours. Join Leslie on a moderate, fun tour to Lake Blanche in Big Cottonwood Canyon. Meet Leslie at Butler Elementary at 9:00am.

FEB 4 Sun

SOCIAL: HOT & SPICY POTLUCK/BIRTHDAY CELEBRATION You are cordially invited to assist WMC Master Chef Bob Graves in celebrating his birthday and turning away Winter's chill by enjoying Bob's favorite kind of food: **HOT & SPICY!!** Plan on brining your favorite flavorful of fiery dish, or a salad or dessert that will cool the palate. Host Craig McCarthy will kick off the festivities at his home, 518 "B" St. from 5:30 to 8:30 pm. There will be a \$2.00 cover charge to WMC members (\$4.00 for non-members) to cover utensils, glasses, and fire extinguishers. Call Craig (521-5408) or Felicia (266-9462) for further details.

FEB 6 Tue

SOCIAL: SYMPHONY — MUSICAL MAYHEM Eminent musicologist Peter Schickele is the special guest with the Utah Symphony. Call Ken Engstrom (466-2825) sooner rather than later to get tickets and find out the meeting place for dinner. (co-listed with Sierra Singles)

FEB 7 Wed

CLIMBING- ROCKREATION CLIMBING GYM- BEGINNERS WELCOME! Join Herb Hayashi any time after 5:30 PM for an evening of indoor climbing at 2074 E 3900 S. Cost is discounted for WMC members! \$7.00 per visit, or memberships are available. Also, Equipment rental is free to WMC members! If you would like to learn how to climb, call Herb (278-2620) and he will be glad to help you get started. NOTE- Since this is a professionally monitored, controlled environment, helmets are not required for this activity.

FEB 7 Wed

SOCIAL: TOWER THEATRE MOVIE NIGHT Meet at the Park Ivy Cafe (878 S., 900 E.) before watching a movie of cultural significance at the Tower Theatre. Wide ranging discussions will take place afterwards at the Coffee Garden. Call Ken (466-2825) with any questions. (co-listed with Sierra Singles)

FEB 7 Wed

WMC BOARD MEETING As usual all WMC members are welcome to attend the monthly business meeting of the Governing Board. We will meet at the WMC office 888 S. 200 E. at 7:00 pm. We will dine beforehand at the Cafe Trang 818 S. Main St. at 6:00. Please join us.

FEB 10 Sat

SKI TOUR: BEAVER CREEK;UINTA'S (NTD) with Constance McKay (268-9288) Meet at the K-Mart parking lot on Parley's way at 9:00 am. This is a good beginners ski tour alongside the Mirror Lake Highway. Bring lunch and a beverage.

FEB 10 Sat

SKI TOUR: CARDIFF FORK VIA MILL D SOUTH (MOD+) with Tom 'The Pemmican Eater' Walsh. (969-5842) Meet at the Butler Elementary School Parking lot at 2700 East and 7000 South. Tom insists it's the pemmican bars that keeps him going all day through powder thick and thin. You'll need a few to keep up with him as there are numerous possibilities to ski on this one. Avalanche beacons (457 khz compatible please) skins and shovels required.

FEB 10 Sat

SKI TOUR: LEADERS CHOICE (MSD) with Will McCarvill (943-5520) Call to register and find out where to meet. Avalanche beacons (457 khz compatible) skins and shovels required.

FEB 10 Sat

SNOWSHOE: DOG LAKE (NTD+) Janet Chatwin (255-3732) will be the leader on the always popular Dog Lake tour for all enthusiastic beginners and experienced snowshoers looking for a fun easy time. Meet Janet at Butler Elementary at 9:30am.

FEB 10 Sat

SNOWSHOE: RED PINE LAKE (MOD) Gretchen Siegler (575-8526) will be the leader on the trail to Red Pine Lake. Since Valentine's Day is coming next week, perhaps she's looking for something in red. Meet Gretchen at Butler Elementary at 9:30am.

FEB 10 Sat

SOCIAL: RED SHOES & CHOCOLATE DESERTS VALENTINE POTLUCK AND DANCE Happy Valentine's Day! Strap on your red shoes, and get ready to celebrate this special holiday with the WMC's second annual "Red Shoes & chocolate Desserts" Valentine Potluck & Dance. Place: Hendrickson Range Clubhouse. From Eastbound I-80 go up Parley's Canyon to exit 134 (East Canyon) turn right (not towards Mtn Dell) follow the road a ways and make another right into the parking lot. Since there may be limited parking (if there is a lot of snow in the lot), we'll meet at the Parley's Way Kmart at 6:00 for carpooling. Pot-luck starts at 6:30 and dancing at 8 pm. The cover charge will be your best pair of red shoes (or a Valentine's costume) and \$5.00/person for WMC members, \$7.00/person for non-members. Extra credit given for chocolate deserts. For more information, call Liz Cordova (484-3740 or Eileen Gidley (255-4336).

FEB 11 Sun

SKI TOUR: BEAVER CREEK;UINTA'S (NTD) with Louise Knauer (364-7313) Meet at the K-Mart parking lot on Parley's way at 9:00 am. This is an excellent easy trail just south of the Mirror Lake Highway East of Kamas. Track skis are OK for this one.

FEB 11 Sun

SKI TOUR: LEADERS CHOICE (NTD) with Mohammed Abdalla (466-9016) Meet at the K-Mart parking lot on Parley's way at 9:00 am. Not only is Mohammed known for his wonderful disposition and enormous smile, but he also knows where to go skiing! He's just a bit wary about his destination because he wants the good snow! Avalanche beacons (457 khz compatible please) skins and shovels are not required, but if you have them, bring them.

FEB 11 Sun

SKI TOUR: POWDER PARK #2 (MOD) with Phil 'Powder man!' Fikken (583-8499H, 569-7331W) Meet at Lot #4 on Ft. Union Blvd. (about 3600 East) at 9:00 am. Follow Phil to this area north of Desolation Lake; This bowl normally has good powder, and we all know that Phil's one of the world's most enthusiastic powder aficionados! Avalanche beacons (457 khz compatible please) skins and shovels required.

FEB 11 Sun

SNOWSHOE: DOG LAKE TRAIL TO MEADOW (NTD-) Leslie Mullins Davis (363-0560) will be leading an easy snowshoe tour to the meadow below Dog Lake. Join Leslie for this leisurely tour at Butler Elementary at 10:00am.

FEB 11 Sun

SNOWSHOE: SILVER FORK (NTD) Christine Allred (261-8183) will lead the first WMC February snowshoe tour up Silver Fork. Join Christine in looking for all that glittering snow at Butler Elementary at 9:30am.

FEB 14 Wed

CLIMBING- WASATCH FRONT GYM- BEGINNERS (and lovers) WELCOME! Join Herb Hayashi any time after 5:30 for an evening of indoor climbing at 427 W 9160 S. Cost is discounted for WMC members! \$7.00 per visit (instead of \$8 reg.), or monthly memberships are available. If you would like to learn how to climb, call Herb (278-2620) and he will be glad to help you get started. WMC members also get a discount on rental gear! NOTE- Since this is a professionally monitored, controlled environment, helmets are not required for this activity.

FEB 14 Wed

SOCIAL: LINE DANCE INSTRUCTIONS Join us as Linda Kosky (943-1871) teaches us the latest line dance steps! No partners needed. Bring your dancing shoes to the First Unitarian Church (569 South 1300 East) at 7 pm. Cost is \$2.50 to cover the rental of the church.

FEB 15 Thu

GENERAL MEMBERSHIP MEETING We will elect the '96-'97 slate of officers and consider important issues which will define the Club's future. The meeting will convene at 7:30 pm at the First Unitarian Church 532 S., 1300 E. Agenda items will include officer elections, the Lodge, and Steve Negler will present a slide show from his trip to Tibet. Please come, it is your club and the new board will need to know how you want it to be run!

FEB 16 to 19 Fri-Mon

MOUNTAIN BIKING: DEATH VALLEY Tired of snow, cold, and mobs of president's day weekend? Nostalgic about all the great rides you did last summer? Well...have we got a trip for you!!! Average daytime temperature 74°, snow 0%, rain 0%, sunny 99.9%, scenery 110%. Hot Springs 105° for soaking out the tired muscles. It is the biker's paradise in February! We will do day rides from a central camping location at Furnace Creek. This is the second year for this trip and it is fabulous! Registration is limited so sign up early. Cost is about \$60 plus transportation. Call Bob Wright (1-801-649-4194) for information and to register.

FEB 17 Sat

SKI TOUR POWDER PARK: (MOD) Meet Tom Silberstorf (255-2784) at Butler Elementary 9:00 a.m. with avalanche beacon, shovel, and skins to tour Powder Park. Tom knows where all the best snow is!

FEB 17 Sat

SOCIAL: VALENTINES DANCE - LAYTON AREA WMC members are welcome at this dance which is a charity fundraiser sponsored by a Church, which features a no alcohol, no smoking environment. Dance to music from the 50's and 60's. The dance will be held at 7:00 pm at the Saint Rose Social Center. Take the Layton exit from I-15, East to Gentile St. Turn right and follow to Chapel St. and you're there! Contact Jeff Davis (1-801-776-5333) for more information.

FEB 17 Sat

SKI TOUR: SILVER FORK (NTD) Meet the lovely Barbara Jacobson (943-3715) at Butler Elementary 9:00 am. Skins are recommended.

FEB 17 Sat

SNOWSHOE: SILVER FORK (NTD) Janet Friend (268-4102) will be the leader on today's tour up Silver Fork. Janet says wear your silver bells and bring your divining rods and perhaps you'll find silver at the mine. Meet Janet at Butler Elementary at 9:00am.

FEB 17 to 19 Sat-Mon

SKI TOUR: STEAM MILL YURT north of Logan has a 3.5 mile trip in with an altitude gain of 1500 feet. It is located at 8100' and has plenty of intermediate skiing. Pack in on Saturday, stay overnight Saturday, Sunday, and Monday nights and depart around noon Tuesday. This is a three day trip on the President's day holiday. Capacity is 6 people. Cost is about \$70.00. Call Tom Walsh (969-5842 after 7:00 pm) for information.

FEB 17 Sat

SNOWSHOE: UINTAS (MOD) Mark Jones (486-5354) indicates that this snowshoe tour will be an off-trail exploration, for experienced snowshoers only, in the Shingle Creek area looking for white fluffy powder. Call Mark for more details or meet him at Skyline high's east parking lot at 9:00am.

FEB 17 Sat

SOCIAL: SYMPHONY Join hosts Robert Turner (544-0606) and Lori Ball (583-8133) for dinner and or an evening of classical music. Dinner will be 5:30 pm at Baci's. The symphony is at 8 pm at Abravanel Hall. The program features Mozart's "The Abduction from the Seraglio: Overture", Bethovens "Piano concerto No. 4", and Brahms' "Symphony No. 4". RSVP for dinner by Wed. Feb 14th or meet by 7:30 pm in the Abravanel Lobby, if you just want to attend the symphony. Estimated cost of tickets is \$12.

Feb 18 Sun

SKI TOUR: BEAR TRAP FORK (MOD) Depending on the snow, Frank and Sue Davis (272-7217) will head to Bear Trap Fork or leader's choice. Bring avalanche beacon, shovel, and skins to parking lot #4 (the one closest to the canyon) at 9:00 a.m.

Feb 18 Sun

SKI TOUR: LEADER'S CHOICE (NTD) Mike Hendrickson (942-1476) will lead this one, track skis not appropriate. Meet at Butler Elementary 9:00 a.m.

FEB 18 Sun

SNOW REMOVAL AT THE LODGE. 2:00 PM. Please call Martin (968-1252 or 942-8902) to confirm before driving up.

FEB 18 Sun

SNOWSHOE: AMERICAN FORK CANYON-MILL CANYON/TIBBLE FORK AREA (MOD) Join Russ Pack (572-5653) for another snowshoe tour to a different area. This tour may require (see below) waterproof footwear of Sorel height to ford the North Fork creek above Tibble Fork Reservoir (before putting on snowshoes) and several early subsequent crossings of Mill Canyon creek. This will be another tour or 6 to 7 miles and 1500ft of elevation change but with lots of unused snow and solitude. Bring a lunch for the trip up Mill Canyon and the loop around Tibble Fork basin. Changing of footwear should be possible after the creek crossings and we can stash the tall boots and use them on the return to get back across the creek(s). Depending on snow conditions, there may be another trail avoiding the creeks. Meet Russ at the 7200So Park and Ride at 9:00am.

FEB 18 Sun

SNOWSHOE: GREENS BASIN (NTD) Paul Larsen (265-0206) wants to welcome all newcomers for a slow paced tour to the beautiful Greens Basin area. Bring a lunch to relax and enjoy the scenery. Meet Paul at Butler Elementary at 10:00am.

FEB 19 Mon

SNOWSHOE: MINERAL FORK (NTD/MOD) Got the day off? Join Ray Duda and Loraine Lovell (272-4601) for a President's Day tour up Mineral Fork. Meet Ray and Loraine at Butler Elementary at 9:00am

Feb 20 Tue

SKI TOUR: LEADERS CHOICE (MOD) Leaders choice. Every Tuesday morning Edgar Webster will lead a MOD Leaders Choice tour. Meet him at 7:15 am. Call him (583-0703), to register and to find out where he plans to ski.

FEB 21 Wed

CLIMBING- ROCKREATION CLIMBING GYM- BEGINNERS WELCOME! Join Herb Hayashi any time after 5:30 PM for an evening of indoor climbing at 2074 E 3900 S. Cost is discounted for WMC members! \$7.00 per visit, or memberships are available. Also, Equipment rental is free to WMC members! If you would like to learn how to climb, call Herb (278-2620) and he will be glad to help you get started. NOTE- Since this is a professionally monitored, controlled environment, helmets are not required for this activity.

FEB 21 Wed

SOCIAL: MOVIE NIGHT Meet at the Desert Edge Brewery (at the Pub) Trolley Square at 6:00 pm to eat before catching a movie at one of the nearby movies (most movies start between 7-7:30 pm). Call Ken (466-2825) with any questions. Co-listed with the Sierra Singles.

Feb 24 Sat

SKI TOUR: BEAVER CREEK (NTD) Roger Sawyer (568-9665) will lead an easy tour at Beaver Creek in the Uinta's. Meet him at the K-Mart parking lot on Parley's way at 8:00 am to carpool.

Feb 24 Sat

SKI TOUR: LEADER'S CHOICE (MOD) Leslie Woods (484-2338) the princess of the mountains is leading her faithful followers to an undisclosed place. It seems that this lady is particular about the kind of snow she skis, it's fluffy powder or nothing, and considering the strange weather patterns this year, she's doing a leaders choice. Meet her at the Butler Elementary school parking lot at 9:00 a.m. with a new frequency compatible avalanche beacon, shovel, and skins.

Feb 24 Sat

SKI TOUR: MAYBIRD (MSD) Call Chris Atkin (645-9665) to ski Maybird. He wants to meet before 9:00 a.m. to beat the crowds, which have been considerable due to all of the Olympic hype. Avalanche beacon, shovel, and skins required.

FEB 24 Sat

SNOWSHOE: DRYCREEK DIVIDE (MSD) Kip Yost (277-4957) will lead a heavy duty snowshoe tour up Dry Creek above Alpine for all those who feel inclined for a 12-14 mile round trip and plenty of elevation gain. Just think of the views-and the sweat! Meet Kip at the 7200 S. park and ride at 8:00 am or at the Kountry Korner in Highland (Intersection of E/W American Fork Canyon and N/S Alpine highways) at 8:30am.

FEB 24 Sat

SNOWSHOE: WILLOW LAKE (NTD-) Zig Sondelski (292-8332) will be leading the family snowshoe tour today but asks that kids be 11 and older please! Meet Zig at Butler Elementary at 9:00am.

Feb 25 Sun

SKI TOUR: BEAVER CREEK (NTD) Ski Beaver Creek in the Uinta's with Mike Eisenberg (801-649-8916), skins are advisable. Meet at Parley's K-Mart at 9:00 a.m.

Feb 25 Sun

SKI TOUR: MONTREAL HILL (MOD) Pat Kottcamp (467-7231) will lead a tour up to Montreal Hill in Cardiff Fork. Rumor has it that this is an excellent powder spot, and Pat knows how to use the stuff! Meet at parking lot #4 at 9:00 a.m. with avalanche beacon, shovel, and skins.

FEB 25 Sun

SNOWSHOE: ALBION BASIN (NTD) Larry Nilson (296-1716) has chosen that beautiful and spectacular basin above Alta for the easy snowshoe tour today. Join Larry at Butler Elementary at 9:30am.

FEB 25 Sun

SNOWSHOE: RED PINE (MOD) Mohamed Abdallah (466-9016) will be leading the always popular tour to Red Pine Lake--frozen and snow covered though it may be. Meet Mohamed at Butler Elementary at 9:00am if you want to get in on the fun and exercise.

Feb 27 Tue

SKI TOUR: LEADER'S CHOICE (MOD) Every Tuesday morning Edgar Webster will lead a MOD Leaders Choice tour. Meet him at 7:15 am. Call him (583-0703), to register and to find out where he plans to ski.

FEB 28 Wed

CLIMBING- WASATCH FRONT GYM- BEGINNERS WELCOME! Join Herb Hayashi any time after 5:30 for an evening of indoor climbing at 427 W 9160 S. Cost is discounted for WMC members! \$7.00 per visit (instead of \$8 reg.), or monthly memberships are available. If you would like to learn how to climb, call Herb (278-2620) and he will be glad to help you get started. WMC members also get a discount on rental gear! NOTE- Since this is a professionally monitored, controlled environment, helmets are not required for this activity.

FEB 28 Wed

SOCIAL: LINE DANCE INSTRUCTIONS Join us as Linda Kosky (943-1871) teaches us the latest line dance steps! No partners needed. Bring your dancing shoes to the First Unitarian Church (569 South 1300 East) at 7 pm. Cost is \$2.50 to cover the rental of the church.

MAR 2 Sat

SNOWSHOE: AMERICAN FORK CANYON-PINE HOLLOW TO TIBBLE FORK OR MILL CANYON LOOP (MOD) Russ Pack (572-5653) will try another snowshoe tour in the American Fork Canyon area. This snowshoe tour will utilize a portion of the Great Western Trail and will require spotting vehicals at Tibble Fork Reservoir and then driving another 4 miles to the starting point. This is another 6 to 7 mile tour and 1500ft elevation gain in the same area as the Feb. 18th tour but a different starting point. This may be the best of the three tours (Jan. 20th, Feb. 18th, and Mar. 2nd) because we'll spend more time snowshoeing along a ridge, so bring a lunch and do a snow dance! Depending upon the snow cover we may have to cross the North Fork of American Fork Creek-Sorel type footwear requirement--just before we reach the vehicals at Tibble Fork Reservoir. Call for more info on creek crossing conditions Friday the 1st if you feel it's necessary. Meet Russ at 7200 S. Park and Ride at 9:00 am.

MAR 2 Sat

SOCIAL: SADIE HAWKINS' DAY POTLUCK AND SQUARE DANCE Yes, WMC gentlemen, it's the ladies' turn for this one.....with 1996 being the last "Leap Year" until the next century, it seemed appropriate for a Sadie Hawkins' Day Dance! Place: Salt Lake County Tenth East Senior Citizen's Center, 237 South, 1000 East. Dress code: straight form the country! (i.e. coveralls, jeans, scarfs, cowboy boots, etc.) Time: Potluck at 6:30 pm with square dancing being called by Bart starting at 8:00 pm (We always have a great time when Bart calls the "squares".) Instruction is provided. You all come now! Cover charge: \$5.00 WMC members, \$7.00 non-members.

MAR 2 Sat

SKI TOUR: LEADER'S CHOICE (NTD) Barb Petty (583-3134) is not sure how the snow will be so please call to find out place and time for this leader's choice tour, skins may be necessary.

Mar 2 Sat

SKI TOUR: LEADER'S CHOICE (MOD) Dallas Chopping (292-6298), considered by some to have the smoothest tele turn in his family, will be heading up this leader's choice, Meet him at the Butler Elementary School parking lot at 9:00 a.m. with avalanche beacon, shovel, and skins.

Mar 3 Sun

SKI TOUR: LEADER'S CHOICE EXPLORATORY (MOD) Brian Barkey (1-801-394-6047) A semi exploratory MOD. Brian will be selecting a tour from the Hanscom/Kelner ski tour book based on the snow conditions at this time. If anyone knows of a sure-fire pagan snow ritual to perform, please tell Brian. Avalanche beacons compatible with the new frequency, shovels and skins are required on this one. Doggies able to ski powder are allowed on this tour.

Mar 3 Sun

SKI TOUR: TRIPLE TRAVERSE (MSD+) Ever done the Triple Traverse? Skiers will start at Alta and head up to Flagstaff Peak, down to Day's Fork, up to Little Water Peak, down to Mill Creek then up to Murdock Peak and finally down Lamb's Canyon with an up and over into Toll Canyon. Wow! Your leader George Westbrook (942-6071) promises this tour will have easy climbing with great northeast down skiing. This will be a 14-16 hour tour and will start very early in the a.m. Please call to register. Avalanche beacon, shovel, and skins required.

Mar 3 Sun

SKI TOUR: WILLOW CREEK (NTD) You can either meet Joanne Miller (801-649-5996) at 9:00 a.m. at Park City high school or collect at 8:15 am at Parley's K-Mart to carpool to the high school for a tour up Willow Creek in the Uinta's. There will be no one in charge at the S.L.C. carpool meeting spot, so you'll have to identify yourselves somehow. Skins are recommended.

MAR 3 Sun

SNOW REMOVAL AT THE LODGE. 2:00 PM. Please call Martin (968-1252 or 942-8902) to confirm before driving up.

MAR 3 Sun

SNOWSHOE: DAYS FORK (NTD) Tom Willis (485-0370) will be leading the easy tour today so join him and enjoy a winter day snowshoeing up Days Fork. Meet Tom at Butler Elementary at 9:30am.

MAR 3 Sun

SNOWSHOE: DOG LAKE- LITTLE WATER (MOD) Join Knick Knickerbocker (272-5358) for the loop tour up the Dog Lake trail and down Little Water. Knick always has fun people on his tours, so be there and be one! Meet Knick at Butler Elementary at 9:30am.

MAR 3 Sun

SOCIAL: ENTERTAINMENT PLANNING MEETING Rumor has it there will be a "coronation" of the new entertainment committee directors. More information will be in the March Rambler. Place: Lori Ball's palace: 1261 Yale Avenue (one half block west of 1300 East) Questions? Call Lori at 583-8133.

Mar 5 Tue

SKI TOUR: LEADER'S CHOICE (MOD) Every Tuesday morning Edgar Webster will lead a MOD Leaders Choice tour. Meet him at 7:15 am. Call him (583-0703), to register and to find out where he plans to ski.

MAR 6 Wed

CLIMBING- ROCKREATION CLIMBING GYM- BEGINNERS WELCOME! Join Herb Hayashi any time after 5:30 PM for an evening of indoor climbing at 2074 E 3900 S. Cost is discounted for WMC members! \$7.00 per visit, or memberships are available. Also, Equipment rental is free to WMC members! If you would like to learn how to climb, call Herb (278-2620) and he will be glad to help you get started. NOTE- Since this is a professionally monitored, controlled environment, helmets are not required for this activity.

MAR 6 Wed

WMC BOARD MEETING All WMC members are welcome to attend this special meeting as the '96-'97 Board take their seats in the hallowed hall. Unless otherwise noted in the March Rambler the meeting will occur at the usual time and place: 7:00 pm at the WMC office 888 S. 200 E with dinner beforehand at the Cafe Trang 818 S. Main St. at 6:00.

MAR 7 Thu

BOATING: RIVER SEASON PLANNING MEETING & PARTY Please bring permits, pencils, paper, and a pot luck dish to the home of Janis Huber (486-2345) at 7:00 pm. Your friendly face and helpful participation will be greatly appreciated. Even if you didn't get a permit, please come. There are plenty of other tasks you can volunteer to do to help make this a successful river year. The potluck dinner will begin at 7:00 pm and the meeting about 7:45. Please call Janis for directions to her home.

MAR 8 Fri

SOCIAL: SING-A-LONG (NTD!!) Join Frank Bernard (533-9219) at 7 pm for this fourth in a series of folk and joke singing. Bring your voice and/or guitar to Frank's home at 417 N. Center Street in Capitol Hill (about 130 West 400 North), and we'll entertain ourselves in this 100% audience participation event. Bring your own beverage and snacks - an enthusiastic attitude is the only other requirement! If you have any questions, please call Frank (533-9219)

Mar 9 Sat

SKI TOUR: REYNOLD'S PEAK (MOD) Meet Jane Gunther (355-3010) at Butler Elementary School Parking lot at 9:00 a.m. with avalanche beacon, shovel, and skins and then head up for a tour of the north face of Reynold's Peak. Jane knows everything about this mountain, she'll find you some face shots for sure!

Mar 9 Sat

SKI TOUR: UINTAS (NTD) Leader Cheryl Soshnik (1-801-649-9008) will pick one of the nice trails along the Mirror Lake hiway depending on snow conditions. Meet at the Kimball Junction K-Mart at 9:30 am. Bring wax, waxless skis, or skins, but beacons and shovels are not required.

Mar 10 Sun

SKI TOUR: DOG LAKE (NTD) The snow always falls for Mohamed Abdallah (466-9016), he has that special gift! Follow the snowman to Dog Lake via Mill D. Meet at 8:30 a.m. at Parley's K-Mart, skins are recommended.

Mar 10 Sun

SKI TOUR: UPPER GREEN'S BASIN (MOD) Tom 'Tele-mark' Walsh (969-5842) will either lead you to Upper Green's Basin or leader's choice. Ask him how a beard can actually improve your turn! Meet at the Butler Elementary School parking lot at 9:00 a.m. with avalanche beacon, shovel, and skins.

MAR 10 Sun

SNOWSHOE: LEADERS CHOICE (MOD/MOD+) Russ Pack (572-5653) is hoping for enough snow to do a tour up Mill Canyon that branches off Spanish Fork Canyon. The possibility is high that large wildlife could be viewed since this is a winter range area. Watch for more info in the March Rambler.

Mar 12 Tue

SKI TOUR: LEADERS CHOICE (MOD) Every Tuesday morning Edgar Webster will lead a MOD Leaders Choice tour. Meet him at 7:15 am. Call him (583-0703), to register and to find out where he plans to ski.

MAR 13 Wed

CLIMBING- WASATCH FRONT GYM- BEGINNERS (and lovers) WELCOME! Join Herb Hayashi any time after 5:30 for an evening of indoor climbing at 427 W 9160 S. Cost is discounted for WMC members! \$7.00 per visit (instead of \$8 reg.), or monthly memberships are available. If you would like to learn how to climb, call Herb (278-2620) and he will be glad to help you get started. WMC members also get a discount on rental gear! NOTE- Since this is a professionally monitored, controlled environment, helmets are not required for this activity.

MAR 13 Wed

SOCIAL: LINE DANCE INSTRUCTIONS Join us as Linda Kosky (943-1871) teaches us the latest line dance steps! No partners needed. Bring your dancing shoes to the First Unitarian Church (569 South 1300 East) at 7 pm. Cost is \$2.50 to cover the rental of the church.

MAR 17 Sun

SNOW REMOVAL AT THE LODGE. 2:00 PM. Please call Martin (968-1252 or 942-8902) to confirm before driving up.

MAR 17 Sun

SNOWSHOE: ST. PATRICK'S DAY IN THE UINTA'S-SHINGLE CREEK AREA (MOD) Go green and join Cheryl Soshnik (1-649-9008) for today's snowshoe tour off the Wasatch front. Besides, you may be green with envy if you can't join the subsequent party in her famous hot tub after the tour. Meet Cheryl at the Kimball Junction Kmart at 9:30 am.

MAR 17 Sun

SOCIAL: ST. PATRICK'S DAY POTLUCK Look for details in the March Rambler. Host: Patti O'Keefe (973-7984)

MAR 20 Wed

CLIMBING- ROCKREATION CLIMBING GYM- BEGINNERS WELCOME! Join Herb Hayashi any time after 5:30 PM for an evening of indoor climbing at 2074 E 3900 S. Cost is discounted for WMC members! \$7.00 per visit, or memberships are available. Also, Equipment rental is free to WMC members! If you would like to learn how to climb, call Herb (278-2620) and he will be glad to help you get started. NOTE- Since this is a professionally monitored, controlled environment, helmets are not required for this activity.

MAR 23 Sat

SNOWSHOE: GOURMET SNOWSHOE TOUR-WILLOW LAKE (NTD/FUN) It's getting near the end of the season, time for Mark Wolfman Jones (486-5354) and Holly Golightly Over The Snow Smith (272-5358) to lead a promised gourmet tour to Willow Lake and beyond. **Menu:** Bring your favorite food and beverage to share at the gourmet destination. **Attire:** Casual or formal, but snowshoes recommended. **Other Info:** China, crystal and silverware provided; All seating with a view. It has been rumored that there will be a surprise appearance from a Harvey Wallbanger in disguise. Meet the sponsors at Butler Elementary at 9:30am.

MAR 23 Sat

SOCIAL: MURDER MYSTERY NIGHT Details in the March Rambler

MAR 27 Wed

CLIMBING- WASATCH FRONT GYM- BEGINNERS WELCOME! Join Herb Hayashi any time after 5:30 for an evening of indoor climbing at 427 W 9160 S. Cost is discounted for WMC members! \$7.00 per visit (instead of \$8 reg.), or monthly memberships are available. If you would like to learn how to climb, call Herb (278-2620) and he will be glad to help you get started. WMC members also get a discount on rental gear! NOTE- Since this is a professionally monitored, controlled environment, helmets are not required for this activity.

MAR 27 Wed

SOCIAL: LINE DANCE INSTRUCTIONS Join us as Linda Kosky (943-1871) teaches us the latest line dance steps! No partners needed. Bring your dancing shoes to the First Unitarian Church (569 South 1300 East) at 7 pm. Cost is \$2.50 to cover the rental of the church.

MAR 31 Sun

SNOWSHOE/DOWNHILL SKIING: (NTD/MOD/FUN) Join the snowshoers turned downhill skiers for a Solitude parking lot tailgate lunch at high noon. Here's the plan. Those who want to downhill ski today can buy a Solitude lift pass. Those who want to snowshoe can tour up Silver Fork (right out of the Solitude parking lot). We'll meet for lunch together back at the vehicles. We need a snowshoe leader, so step up and volunteer! Meet at Butler Elementary at 8:30am.

APR 6 Sat

SOCIAL: PASTA PARTY Join gourmet chef Scott Harrison for an evening of culinary delight. Scott does all the cooking and we get to feast! Details in the March Rambler.

APR 7 Sun

SOCIAL: INTERDENOMINATIONAL SUNRISE SERVICE AND BRUNCH Details in the March Rambler

Cindy Kidd, Utah AIDS Activist, died from complications of the disease, January 17th, 1996. She was editor of *The Positive Press*, a newsletter published by the People With AIDS Coalition of Utah, for more than two years until her illness forced her to relinquish the post last year. In addition, she served as secretary of the board of the PWACU.

Chad Smith, PWACU board member stated, "Cindy was a conscientious person and she hung on to advocacy because she believed there needed to be a voice for people with HIV/AIDS. Cindy is survived by her husband, Brian, four children and her parents (Cindy Kidd was the daughter of WMC member Jean Frances.) It was her request that donations go to the People with AIDS Coalition of Utah, 1390 S. 1100 East, Salt Lake City, Utah 84105.

FROM THE BOATING DIRECTOR

by Janis Huber

I seem to recall that only yesterday I aired out all my river gear in preparation for winter storage. Now it seems that it's time to set up the river season planning meeting. This is the meeting where we turn in our permits, and decide the river schedule. We also try to designate the trip organizers. I personally make sure that I have money in my checking account because I like to sign up for the most popular trips at the end of this meeting. Most multi-day river trips will require a deposit because some fees (for the river permit and also the van rental) are required in advance, usually \$25.00-\$30.00. The date is Thursday, March 7, 7:00 pm at my house (I'll have the details in the WMC activities section. And one last detail....lets all wish for more rain/snow!!!



THE BONNEVILLE SHORELINE TRAIL:

From Concept to Reality

(ed. note) The **Wasatch Front Forum** will hold its next session, Feb. 13 at the First Unitarian Church 532 S., 1300 E. The WFF holds panel discussions monthly (except during the Summer). Panelists represent a variety of viewpoints on conservation related topics in the community. The WMC is a supporter of the Wasatch Front Forum.

The February program will introduce Forum participants to the concept of the Bonneville Shoreline Trail and explore some of the planning implementation and management issues associated with this ambitious project.

The program is designed to encourage dialogue between the panelists and the audience. Each panelist will give a brief summary overview of an aspect of the trail followed by an extended question and answer session.

Four panelists and a moderator, all of whom have been extensively involved in the work of the Bonneville Shoreline Trail Committee, will address the following matters:

- **Jim Byrne**, co-chair of the BST Committee: The concept of the Bonneville Shoreline Trail: What? How? When?
- **Don Davis**, Salt Lake County Parks and Recreation Dept: The Bonneville Shoreline Trail and how it fits into the grand plan for Salt Lake County trails.
- **Carrie Dixon**, BST Committee Routes and Standards subcommittee: What does/will it look like? Where does/will it go? The leap from concept to reality.
- **Rob MacLeod**, BST trustee, cyclist/pedestrian: Can bicyclists and walkers/runners safely share trails? An example of a trail management issue.
- **Rick Reese**, chair, BST Committee: Moderator

Join us for this informative discussion, give us your ideas and suggestions and find out how you can join those who are working to create the Bonneville Shoreline Trail.





OUTDOOR FOOTWEAR

Snowshoe Rentals • Shoe Repair Shop
Climbing Shoes • Sport Sandals • Hiking Boots

*Give Us
The Boot!*

Your old telemark boots are worth
\$\$\$
(even if they stink)
We buy and sell used telemark boots!

SNOWSHOES!



- Yuba
- Northern Lites
- Romps

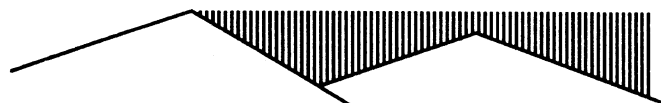
Adult Snowshoes
\$99 and up

Rentals \$5 to \$7 per day

Mekan Boot 3900 South 2070 East Salt Lake City,
Utah 84124 (801) 272-4710



Thinking of Remodeling?



Myers & Mahak

CONSTRUCTION Inc.

Members of "The Wasatch Mountain Club"

485-9209

**FULL SERVICE REMODELING
DESIGN / BUILD
RESIDENTIAL & COMMERCIAL
KITCHENS & BATHROOMS**

Robert Myers 485-9209

Vali Mahak 582-7711

3336 South Pioneer Street • Salt Lake City

Shopping for a beacon?
Avalanche transceivers available in the local area.

Store	Model	New Frequency	Dual Frequency	Price
Alta Sports	Ortovox F1	√ w/visual & speaker		\$249
Alta Sports	Ortovox F2	√ w/speaker	√	\$239
Black Diamond	Pieps Optifinder	√ w/speaker		\$250
Kirkham's	Ortovox F1	√ w/visual & speaker		\$255
Kirkham's	Pieps 457	√ w/speaker		\$220
Kirkham's	Pieps Optifinder	√ w/speaker		\$250
REI	Ortovox F1	√ w/visual & speaker		\$255
REI	Ortovox F2	√ w/speaker	√	\$245
Wasatch Touring	Pieps 457	√ w/speaker		\$249
Wasatch Touring	Pieps Optifinder	√ w/speaker		\$279
Wasatch Touring	Ortovox F1 Plus	√ w/visual & speaker		\$249
Wasatch Touring	Ortovox F2	√ w/speaker	√	\$239
Wild Rose	Pieps Optifinder	√ w/speaker		\$229
Wild Rose	Pieps 457	√ w/speaker		\$229
Wild Rose	Ortovox F1	√ w/visual & speaker		\$229
Wild Rose	Ortovox F2	√ w/speaker	√	\$229

This is not a complete list, and the prices are good as of December, 14, 1995. This is an aid for those folks purchasing the new European frequency beacons. Only avalanche transceivers compatible with the new frequency are acceptable on WMC tours which require beacons. If you have a better source let us know so we can tell everyone else. (Brian 394-6047) Data were compiled by Jim Piani.

Westbrooks

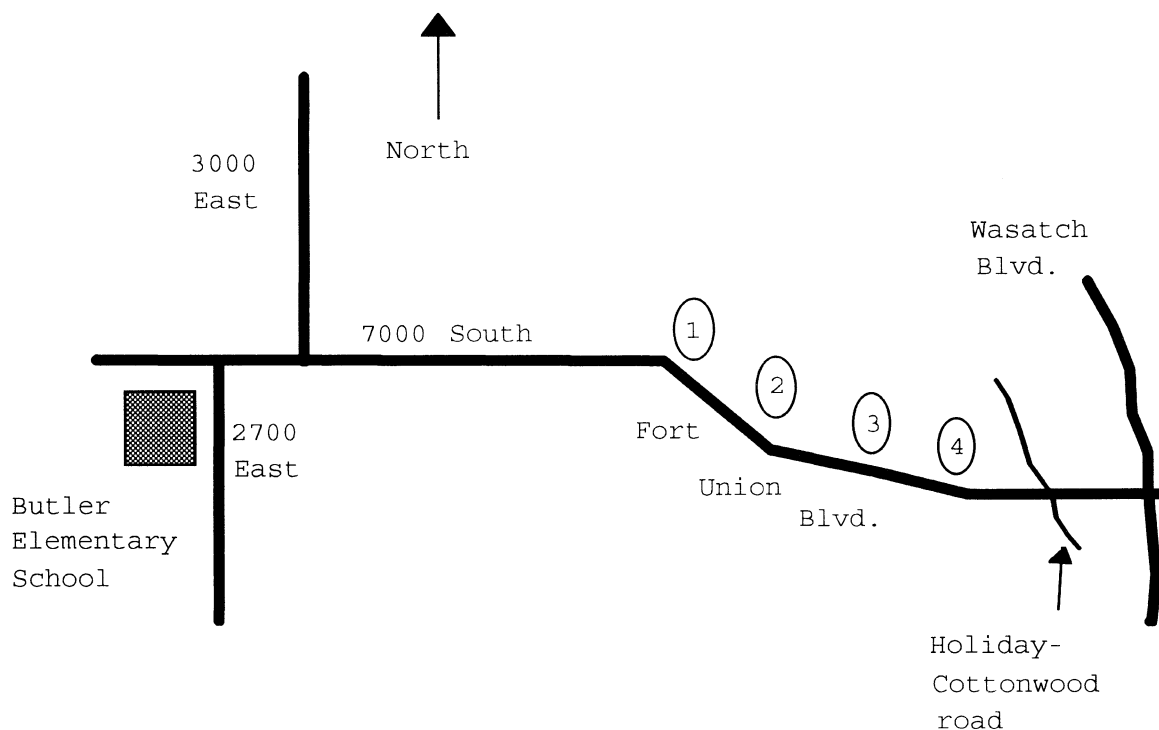
Ski Crampons for cable bindings

Excellent for climbing or traversing crusty or icy slopes. You will be amazed at how much easier these crampons make the process of climbing or traversing crusty slopes.

Westbrooks Investments

27 E. 500 N.
Tooele, Utah 84074
801-882-6129

75⁰⁰



CAR POOL PARKING LOTS FOR SKIING AND SNOW-SHOEING

Butler Elementary School: Access the parking lot from 2700 East just south of 7000 South. (Fort Union Blvd.) We do not have a guarantee that cars won't be towed from here in the event of snow.

Fort Union County Parking lots: The numbers are for the WMC. Don't expect to see any numbered signs, these are basically wide pullouts on the north side of Fort Union Blvd. County time restrictions are to be followed, NO PARKING FROM 10 PM TO 8 AM.

Lot #1: 3220 East Fort Union Blvd. (7000 South) This lot will hold an estimated 5 cars.

Lot #2: 3360 East Fort Union Blvd. (7090 South) This lot will hold an estimated 10-15 cars.

Lot #3: 3420 East Fort Union Blvd. (7140 South) This lot will hold an estimated 7 cars.

Lot #4: 3600 East Fort Union Blvd. (7225 South) This lot will hold an estimated 10-15 cars.

NEW THINGS HAPPENING ON WMC WEB PAGE

"www.drmpark.com/~wmc"

by Tony Ackerman

The response to our World Wide Web page has been good with over 100 visits since we started counting. Several people have left notes and suggestions in our Guest Book. There have been lots of great ideas and we will start implementing some new things on Feb. 1. If you have ideas or would like to submit articles and/or pictures, or links to other WMC oriented sites, please contact Webmaster Tony Ackerman (966-6041).

The Web page will change frequently (at least once a month), so be sure to check it often!

New to the page in February

- ◇ A new look to the opening page.
- ◇ Review the notes in the Guest Book.
- ◇ The featured picture of the month.
- ◇ The featured member of the month.
- ◇ A map section with directions to those out of the way put-ins.
- ◇ Links to the Avalanche Forecast Center

THE WASATCH MOUNTAIN CLUB

Membership applicants must participate in at least two Club outdoor or service activities. Yearly dues are \$30 single, \$45 couple, \$15 student, \$5 application and reinstatement fee.

GOVERNING BOARD 1995-96

President and Directors

President	273-8010	Nance Allen
Vice President	273-8076	Kyle Williams
Secretary	272-4552	Camille Pierce
Treasurers	486-8525	Kathy Hoenig
	359-1950	Larry Schumer
Membership Dir.	328-9364	Leslie Ann Whited
	266-9462	Felecia Kulsic
Hiking Directors	583-1205	Brad Yates
	262-7152	Kip Yost
Boating Directors	486-2345	Janis Huber
Conservation Dir.	647-0205	Rich Osborne
Entertainment Dir.	262-6698	Sam Kievit
	521-5408	Craig McCarthy
Lodge Directors	968-1252	Martin Clemans
		<vacant>
Mountaineering Dir.	273-8076	Kyle Williams
Publications Dir.	484-8271	Jim Zinanti
	484-8271	Reda Herriott-Zinanti
Winter Sports Dir.	649-9008	Cheryl Soshnik
	394-6047	Brian Barkey
Bicycling Dir.	486-0909	Rick Kirkland
Information Dir.		<vacant>

Trustees

1992-96 term	328-4512	Mike Budig
1993-97 term	942-6065	Karin Caldwell
1994-98 term	484-2338	Leslie Woods
1995-99 term	943-8500	Phyllis Anderson
<i>Emeritus</i>	355-7216	O'Dell Petersen
<i>Emeritus</i>	277-6417	Dale Green

COORDINATORS

(under boating director)		
Canoeing	486-4986	Mark McKenzie
Kayaking	<vacant>	
Sailing	649-6805	Vince DeSimone
Rafting	322-4326	Janet Embry
Boating Equ.	487-7072	Vera Novak
Boating Instr.		<vacant>
(under ski touring director)		
Snowshoeing	572-5653	Russ Pack
(under bicycling director)		
Mountain Biking		<vacant>
(under entertainment director)		
Volleyball	364-4006	Ross Martin
(under information director)		
Adopt-A-Highway	583-9611	Carl Warberg
Webmaster	966-6041	Tony Ackerman
(under publications director)		
Commercial Adv.	484-8271	Reda Herriott-Zinanti
Rambler Mailing	288-1858	Harry Kimbrough
(under lodge director)		
Lodge User Rep	647-0205	Rich Osborne
(under conservation director)		
Trails Issues	364-5729	Chris Biltott
(wilderness issues coordinators)		
BLM Land	278-5826	John Veranth
S. Rafael Swell	943-5520	Will McCarvill
Kaiparowits Plat.	647-0205	Rich Osborne
Rivers	486-1476	Allan Gavere
West Desert	273-7955	Donn Seeley

Commercial Advertising

The Rambler encourages and supports your products and services through pre-paid commercial advertisements. Advertisements must be camera ready and turned into the advertising director no later than the 15th of the month prior to publication. Prepayment is necessary for single month advertisements with invoicing and net 30 for repeat advertisements. Contact the Commercial Advertising Coordinator for information or to place an ad.

Full Page	\$95.00	7" x 9"
Half Page	\$50.00	7" x 4.5" Horizontal 3.5" x 9" Vertical
Quarter Page	\$30.00	3.5" x 4.5" square 7" x 2.25" horizontal 2.25" x 9" vertical
Business Card	\$15.00	3.5" x 2"

Wasatch Mountain Club Governing Board Positions Final 1996-1997 Nominations

President	Linda Kosky
Secretary	Camille Pierce (incumbent)
Treasurer	Bob Janzen
Membership	Kyle Williams
Hiking	Brad Yates (incumbent)
Boating	Carol Milliken
Conservation	Will McCarvill
Entertainment	Lori Ball
	Patti O'Keefe
Lodge	Gary Myers
	Scott Schonrock
Mountaineering	Sam Albano
Publications	Magdaline Quinlan
	Kathy Anderson
	Barbara Richards
Ski Touring	Brian Barkey (incumbent)
	Tom Walsh
Bicycling	Rick Kirkland
	Doug Murray
Information	John Shavers
Trustee	John Veranth (4 yr. term)

If you or anyone you know is qualified and would like to run for any board position, please contact one of the **nominations committee** members, or call the incumbent to find out about the position.

Mary Ann Losee (chair)	537-1929
Jerry Hatch	583-8047
Linda Kosky	943-1871

COMING ATTRACTIONS

January and February 1996 YURT SKIING Due to popular demand we have reserved five weekends in the premier mountain yurts of this area. We have steep and deep in the La Sals and rolling intermediate hills north of Logan. The usual deal is to backpack (ski-pack) your food and gear into the yurt, ski the weekend, and pack out. The yurts have coleman stoves and furniture. Some offer other amenities. Talk to anyone who has yurtted before - its a blast. Last year the yurt trips filled up quickly, so make your plans fast. Due to drop outage, there will probably be space available. Call the yurtmeister, Tom Walsh, after 7:00 pm at 969-5842 to sign up for the trip of your choice. When the trips are signed up, a leader will be designated.

February 2-3 SKI TOUR: TOMASAKI CABIN IN THE LA SALS Steep and Deep! With good snow the runs are long and fast, with 2000' vertical exposure just outside the door. Pack in on Friday, stay Friday and Saturday nights and depart Sunday afternoon. Capacity is 10 people. Cost is undefined at press time but is reasonable.

February 17-19 SKI TOUR: STEAM MILL YURT north of Logan has a 3.5 mile trip in with an altitude gain of 1500 feet. It is located at 8100' and has plenty of intermediate skiing. Pack in on Saturday, stay overnight Saturday, Sunday, and Monday nights and depart around noon Tuesday. This is a three day trip on the President's day holiday. Capacity is 6 people. Cost is about \$70.00.

MID-WINTER: Ski Touring BRYCE CANYON (Ruby's Inn) You have seen it in all the calendars-the panorama of Red Orange Hoodoo's laced with SNOW. The scene usually has a skier looking down onto the fantastic Bryce Canyon formations. That skier could be YOU. Plans are now being made for a weekend trip to Ruby's Inn to tour the gently rolling Bryce Canyon Rim. There are currently no reservations nor a fixed date. We could go on the week ending January 13 or 20. Also the week ending February 3 is available. Rooms with two Queen Sized bed are \$45.00. Think about kicking and gliding on smoooooth NTD Trails. Think about relaxing in the HOT TUB after a day of touring the rim. Think about calling Tom Walsh to sign up and get more information (969-5842 after 6:00 PM)

April 3 & 4 1996 Grand Canyon Phantom Ranch

Event is limited to 16 participants. Cost for 6 meals and 2 nights stay at the ranch is approximately \$150.00. Lodging and food on the south rim are additional costs. Lodging accommodations on the south rim for April 2 & 5 will be arranged. (These costs are in addition to those for Phantom Ranch). The slots are filling fast! To secure your slot, payment of \$150.00 must be made to the trip coordinator no later then January 27, 1996. For more information call Linda Kosky at 943-1871.

April 14-21, 1996 WMC BAJA HA! HA! SAILING TRIP The sea of Cortez between Cabo San Lucas and La Paz is the cruising area for a fun-filled trip next spring. Avoid the UTAH MUD season and chase away the WINTER BLUES in MEXICO, sailing scuba, snorkeling, whale watching, beaches, and visiting interesting shore-side places and towns. No sailing experience is necessary. Those wishing to learn more about sailing will have plenty of opportunity. The trip is expected to cost \$1000 or so which includes air and ground transportation, boat costs, food on-board, hotel, etc. Three BOATS have been reserved. To reserve your space, send a non-refundable deposit of \$25.00 to Vince DeSimone P.O. Box 680111, Park City, UT 84068-0111, or CALL 1-801-649-6805 for details.

September 26-29, 1996 GRAND CANYON RIM TO RIM

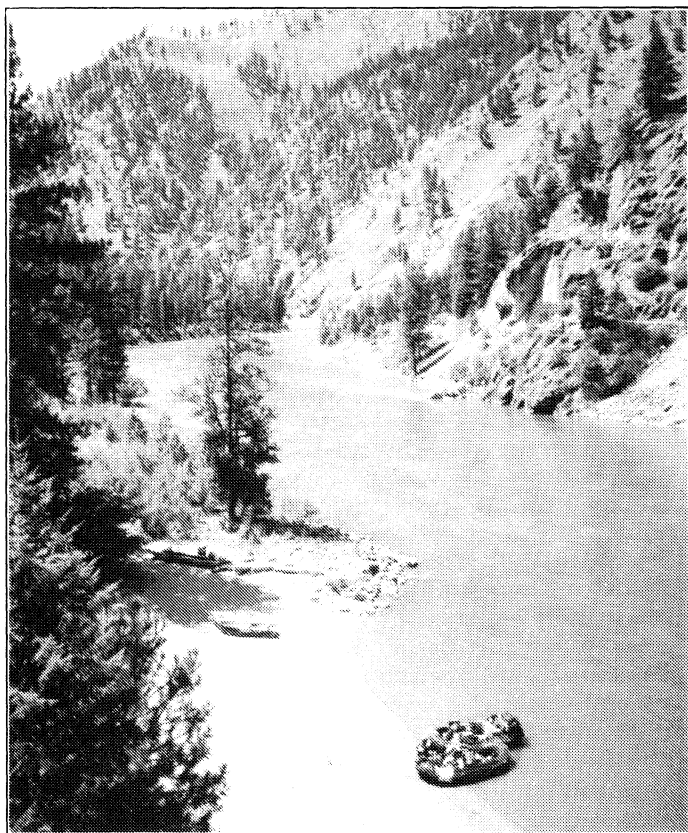
Reservations have been obtained for the above dates for a Rim to Rim trip. The thought is for a North rim to South rim hike, with a one or two night stay at Phantom Ranch. Transportation considerations would be a shuttle service for pick-up at the South rim or charter of a bus for drop-off at the North rim and pick-up at the South rim. Participation is limited to 9-16 individuals. Cost would be a minimum of \$150.00. Anyone interested, please call Linda Kosky at 943-1871. **Call soon as a deposit must be made shortly to hold the reservations!**



TRIP TALKS

Rafting the River of No Return

by Kim Haulenbeek and Steve Dowling
July 7-11, 1995



Heavy winter snowfall and a cold, wet spring led to abnormally high water levels for the Main Salmon River, setting the tone for this trip. In fact, the peak flow levels went off the scale on the Forest Service's hydrographic chart. We heard reports of someone who managed to do the stretch from Corn Creek to Riggins in seven hours. The high water condition was good in that it caused a few people with an earlier permit to cancel and to come with us, but it definitely made things uncertain. Water levels did not drop below extreme boating hazard levels until a few days before the launch date. This uncertainty led to several regrettable cancellations. Luckily, we still managed to get fifteen people to go so that we didn't have to cancel the trip.

We encountered several delays before finally making it out of Salt Lake, arriving at the put-in after 1 am. We launched around noon, after loading the boats and getting some much needed sleep. At the put-in we learned that three out of the eight parties having permits to launch that day had cancelled. Evidently, getting a cancellation for this river isn't all that difficult according to sources in Idaho Falls. Unfortunately, when I inquired about the possibility of getting a cancellation on the Middle Fork of the Salmon, I was told it was an entirely different story because almost nobody cancels out on that one.

The first rapid we encountered was called Gunbarrel. Ed Christie, who led our party of four boats in his personal raft, told us that it would be a fun little class II. I think everyone was a little surprised by how big the waves were on this 'little class II'. More than one person expressed dismay over what the class IV's must be like if a class II can be that pushy on the boats.

We arrived at our desired campsite, Lantz Bar, at around 2:30 pm. We figured that we must have been moving at around six miles per hour. This site proved to be exceptionally nice because it had a couple of outhouses. Even though you had to scare the biting insects away, it beat having to use the PU boxes. Since we arrived so early, we had ample time to explore the arrea. Notable sites were some old cabins which had been converted into a museum and ranger residence, an old wooden watertank and a sign telling the history of Oscar Eakin, one of the early homesteaders on Lantz Bar. In addition, a small herd of bighorn sheep was seen grazing near the cabins.

We launched fairly early the next day. This promised to be the big water day of the trip. We ran Salmon Falls, Bailey, Split Rock and Big Mallard (one of the ten big drops of the United States). People who had run the Main before commented that they'd never seen Big Mallard so washed out. The water was so high that it didn't even have any holes or obstacles to worry about, although it would have been easy to flip in the huge six foot waves. We spent a couple of hours at Barth Hot Springs, which was the nicest non-commercial hot spring most of us had seen. Someone had gone to a lot of trouble to form a huge bathtub shape out of rocks and concrete. Most of our party could have fit into the tub, but the high water temperature (and the fact that it was a hot day) kept us from crowding into it all at once. Shortly before running Big Mallard rapid, some of us saw a cow moose and her calf running up the canyon wall, away from those scary things in the river.

We didn't have to wait long before hitting big water on the third day. The first boat to hit Elkhorn Rapid was having too much fun running some smaller rapids just above it and didn't want to pull over to scout. This caused the other boats to give up on scouting since everyone could just follow the leader. This turned out to be a mistake for the lead boat because it flipped in a huge boat-eating hole which they hadn't seen in time to avoid. Our boat was the next one to pass the rapid and ended up performing rescue duties as a result. We were very worried when we saw Craig Fisher, a former passenger of the flipped boat, stuck in the hole with paddles floating around him. Craig later told us that he was a bit disoriented when he finally floated to the surface and he thought that we were paddling back up the river to rescue him. Unfortunately, we could not get to Craig, but we did get two other passengers and the boat. We also couldn't get Gary Stout who was on the other side of the river and out of range of the throwbag. We pulled over in the nearest eddy to regroup and flip the raft upright. Craig was still missing, but those who had last seen him said that it looked like he was trying to make it to shore. Shortly thereafter, an outfitter picked him up and we were reunited. We initially had lost three paddles, one pump and some of the food from the cooler. This meant that we only had one spare paddle, leaving us a very slim margin should we have any future mishaps. Fortunately, the outfitter who rescued Gary had two of our paddles, so we ended up being only one short. We learned a valuable lesson about scouting rapids and having the gear properly secured. Both Gary and Craig were thankful that they had decided to rent club life jackets instead of buying cheap K-Mart Specials.

(continued...)

We ran one more big rapid that day (Whiplast) and spent a good deal of time at the Buckskin Bill Museum. We camped about a mile down from the museum so that we could hike there if we felt like it. Buckskin Bill seemed to spend all of his time building things, including rifles, tools, and various other necessities of life; rickety bridges; and a fortress to protect himself from the Forest Service (who apparently tried really hard to get him to give up his land on the river). Buckskin Bill's gave us a welcome chance to reacquaint ourselves with civilization by buying \$2 ice cream bars and to restock our swindling soda stash. It turned out that another party camped that night right across the river from where our PU box had been located. I hope they enjoyed the view since we didn't move it for them.

The next day had only one big rapid, Ludwig, to contend with. We stopped for awhile at the Mackay Bar store, where ice cream bars were only \$1, but T-shirts cost \$20. This is probably the most developed resort on the river, with guest cabins and an airstrip. After leaving Mackay Bar, some of the members of our party were lucky enough to see a black bear cub swim across the river right in front of them. Unfortunately for us, we had intentionally gone ahead to put some distance between the boats after being ambushed during an intense water fight and didn't see the cub. This was but one of several waterfights made during the trip (if I had only brought my water cannon). We made camp at Lower Bull Creek at about 1:30 pm and spent the remainder of the day lazing about.

On the last day, we ran Dried Meat, Chittam, Vinegar and Carey Falls rapids. Chittam turned out to be the hardest rapid of the trip, requiring lots of strength to avoid being pinned against a rock wall on river left. Rumor has it that a boat from the party running Chittam before us had flipped and dumped everyone overboard. Luckily, this didn't happen to any of the boats in our party. We arrived at the Carey Creek takeout shortly before noon. Unfortunately, the shuttle service had only delivered two out of three vehicles by the time we arrived, so we had to wait a couple of hours before we could finish loading all of our equipment. This delay caused us to get home in the middle of the night since he had such a long ride back. On the way home, we checked out some large rapids on the lower Salmon and the North fork of the Payette River from the van and pondered the possibilities for future trips.

Overall, it was an excellent trip. The weather stayed nice for the most part, with the exception of a couple of ill-timed cloudbursts. Although the water remained in the high range for the duration of the trip, it had the effect of making it less technical than it probably would have been at the lower water. At this level, most of the major rapids were washed out and were pretty easy to run (although, some had BIG waves and were pushy). Hopefully, we can get a permit to run this section or the Middle Fork next year and will return to "The River of No Return". (ed. note: participants included, at least, Steve Dowling, Kim Haulenbeek, Brent & Diann Higbee, Ken Workman, Carol Milliken, Rick Thompson, Barb Pollyea, Craig Fisher, Eileen Gidley, Ruth Eckman, Helen Hodgson, Mike Budig, and Gary Stout)



Here's how to order
"Winning The Avalanche Game"

VHS videotape
Please fill out this form and mail to:



Wasatch Interpretive Association
P.O. Box 526246
Salt Lake City, UT 84152-6246

or fax your credit card order to the:
Utah Avalanche Forecast Center
(801) 524-4030

Your purchase helps fund avalanche safety information and services.

Ordered by: _____

Shipping Address: _____

City: _____ State: _____ Zip: _____

Daytime Phone: _____ Home Phone: _____

Payment enclosed:

_____ Money Order (Payable to Wasatch Interpretive Association)

_____ Check (Payable to Wasatch Interpretive Association) Orders paid by check may be delayed for clearance.

Charge my: _____ Visa _____ Mastercard

Account Number _____

Expiration Date: _____

Your Signature: (required) _____

Note: Credit card order cannot be processed without signature.

Quantity _____ \$19.95 each in United States	Quantity _____ \$25.00 each in Canada
<div>Add Shipping and Handling charge: <div><div>Priority mail in U.S.</div><div>+ \$5.00 per video .</div><div>\$3.00 per additional video</div></div></div>	<div><div>First Class air mail Canada</div><div>+ \$10.00 per video</div><div>\$ 4.00 per additional video</div></div>
<div>TOTAL \$ _____</div>	<div>TOTAL \$ _____</div>

Please Complete Both Sides

Wasatch Mountain Club

New Member/Reinstatement of Previous Members Application

Do Not Use this Form for Regular Annual Membership Renewal

Please read carefully and fill out completely.

Name(s) _____
(First) (Last)

Address _____ City _____ State _____ Zip _____

Check phone number ☐ Residence: _____ Other ☐ Do not print my name/phone in membership list.
to print in Rambler ☐ Work: _____ Options: ☐ Do not list my name in lists given to Board
membership list: e-mail: _____ approved conservation/wilderness organizations.

I am applying for:

Check one:

_____ New Membership
(Please complete activity section.)
_____ Reinstatement

_____ Single Birth date(s) _____
_____ Couple _____
_____ Student (30 years or younger)

Remit: \$35.00 for single membership (\$30.00 dues, plus \$5.00 application fee)
\$50.00 for couple membership (\$45.00 dues, plus \$5.00 application fee)
\$20.00 for student membership (\$15.00 dues, plus \$5.00 application fee)

Enclosed is \$ _____ for one year's dues and application fee. Checks/money orders only. Make checks payable to Wasatch Mountain Club. Do you wish to receive the Rambler (the Club publication)? ☐ Yes ☐ No
(Subscription price is NOT deductible from the dues.)

Activity Section

You must complete two Club activities (other than socials) to be considered for membership. The activity dates must have been within one year of the application.

<u>Qualifying Activity</u>	<u>Date</u>	<u>Signature of Recommending Leader</u>
1. _____	_____	_____
2. _____	_____	_____

I found out about the WMC from _____

Mail application and check to: Membership Director
Wasatch Mountain Club
888 South 200 East, Suite 207
Salt Lake City, UT 84111-4220

Leave Blank—For Office Use Only

Receipt/Check # _____ Amount Received\$ _____ Date Received _____ By _____

Board approval date _____

WASATCH MOUNTAIN CLUB (WMC)

Applicant Agreement, Acknowledgment of Risk, and Release from Liability

VOLUNTARY PARTICIPATION: I acknowledge that my participation in any WMC activity is voluntary. No one is forcing me to participate.

ASSUMPTION OF RISK: I am aware that WMC activities involve risks, and could result in injury, illness, death, and damage or loss of property. These dangers include but are not limited to: the hazards of traveling in remote areas without medical services or care, the forces of nature, the inherent dangers involved in participation in sports, wilderness travel, and social activities, and the negligent actions of other persons or agencies. I understand that all activities should be considered "exploratory", with the possibility of unexpected conditions and route variations. The WMC is not, nor does it provide, a professional guiding service. In order to partake in the enjoyment and excitement of WMC activities, I am willing to accept the risk and uncertainty involved as being an integral part of the activity. I acknowledge this risk, and assume full responsibility for any and all risks of injury, illness, death, or damage and loss to my property.

I verify this statement by placing my initials here: _____

PREPARATION: I understand that it is my responsibility to evaluate the difficulty of any activity I participate in, and decide whether I am prepared by having the experience, skill, knowledge, equipment, and the physical and emotional stamina to safely participate.

RELEASE OF LIABILITY AND PROMISE NOT TO SUE: I agree that I, my heirs, and personal or legal representatives hereby do release and hold harmless from all liability, and promise not to bring any suit or claim against, the Wasatch Mountain Club, its leaders, directors, agents or representatives for any injury, illness, death, or damage and loss to property resulting from my participation in any WMC activity even if they negligently caused the injury or damage.

LEGAL FEES: Should it become necessary for WMC, or someone on their behalf, to incur attorney's fees and costs to enforce this agreement, I agree to pay WMC reasonable costs and fees thereby expended, or for which liability is incurred.

INSURANCE: I certify that I have sufficient insurance to cover any bodily injury or property damage that I may incur while participating in any WMC activity. If I have no such insurance, I certify that I am capable of paying for all such expenses and liabilities.

My signature below indicates that I have read this entire document, understand it completely, understand that it affects my legal rights, and agree to be bound by its terms. I am at least 18 years old.

Signature _____ Print name _____

Address _____

Phone _____ Date _____

WITNESS: I certify that _____ has alleged to me that he/she has read and understands this document.

Witness signature _____ Print name _____

Address _____

Phone _____ Date _____

ACTIVITY SURVEY

WOULD YOU LIKE TO LEAD?

All of the Club's activity leaders are volunteers. You can be a leader too—just check off the activities you want to lead, and we'll give you a call. Help your Club and have fun too!

- Hiking:** ☐ easy day hike ☐ moderate day hike ☐ advanced day hike ☐ car camp
 ☐ backback
- Boating:** ☐ trip leader ☐ instruction ☐ equipment ☐ sailing
- Skiing:** ☐ NTD tour ☐ MOD tour ☐ MSD tour ☐ out of town trip
- Climbing:** ☐ Wasatch climb ☐ out of town trip ☐ winter mountaineering
- Bicycling:** ☐ road bike tour ☐ mountain bike tour ☐ camping tour
- Other outings:** ☐ snowshoe tour ☐ caving ☐ other

WOULD YOU LIKE TO SUPPORT?

The Club also depends on volunteers for all the rest of its work. Some of this work is critical to the day-to-day functioning of the Club; some of it is important to our community; some of it is just fun. You can let us know how you'll help by checking off activities below.

- Conservation:** ☐ air and water quality issues ☐ trailhead access ☐ wilderness
 ☐ telephone tree ☐ trail clearing
- Socials:** ☐ social host ☐ Party assistance ☐ lodge host
- Rambler:** ☐ word processing ☐ mailing ☐ advertising ☐ computer support
- Lodge:** ☐ general lodge repair ☐ skilled lodge work
- Information:** ☐ public relations ☐ membership help ☐ recruiting ☐ instruction

Would you like to participate on an activities committee? Which one?

Is there a special trip or activity you would like to lead?

What phone numbers can we use to reach you?

Utah Avalanche Forecast Center
Wasatch Front 364-1581
Park City Area 609-2250

WASATCH MOUNTAIN CLUB
888 South, 200 East, Suite 207
Salt Lake City, UT 84111-4220

SECOND CLASS
POSTAGE PAID
SALT LAKE CITY, UT