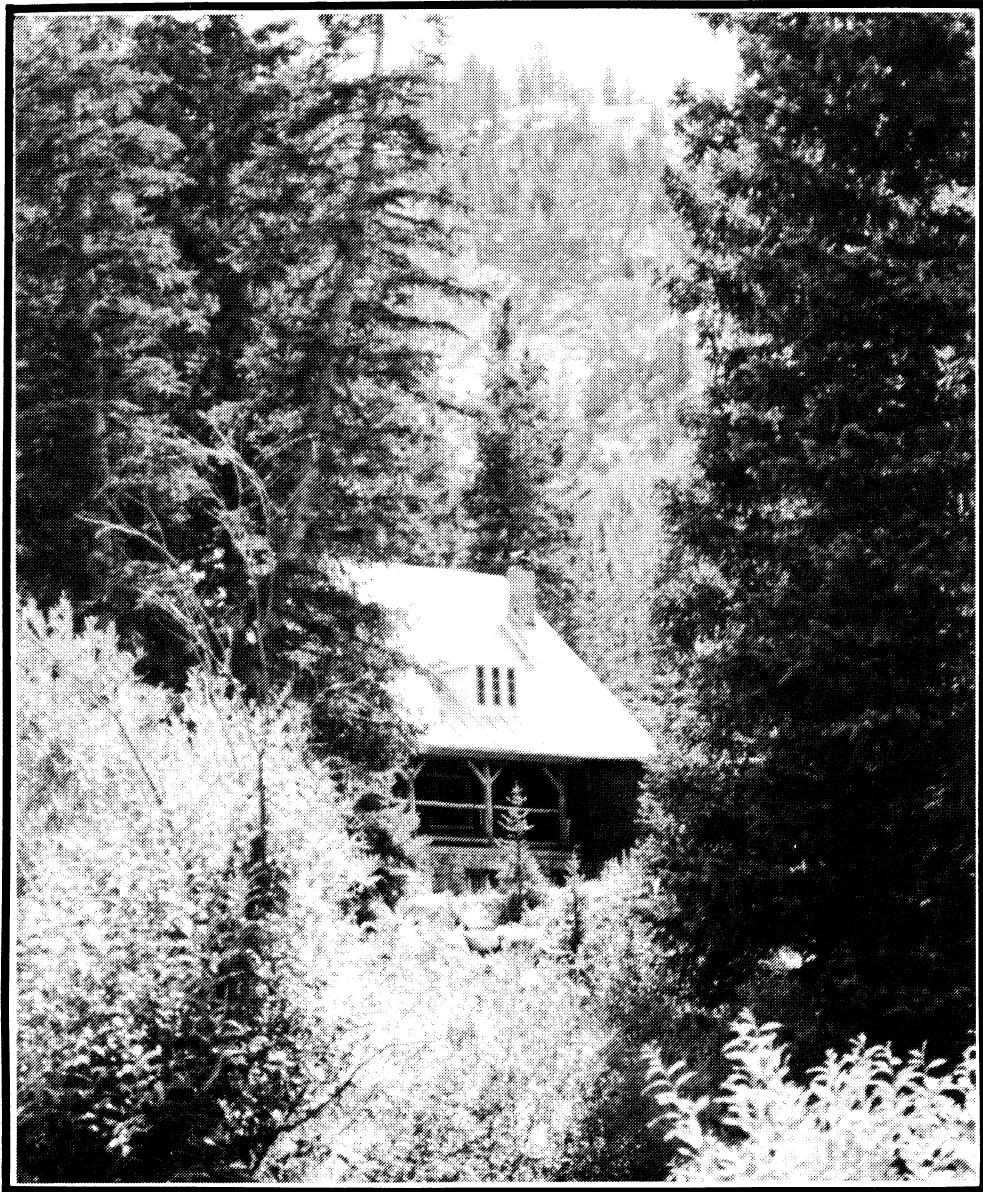


The Rambler

Wasatch Mountain Club

January 1996



VOLUME 73, NUMBER 1
Printed on 100% Recycled Paper

Managing Editors
Jim Zinanti, Reda Herriott, and Dr. Mau

ADVERTISING Reda Herriott
CLASSIFIED ADS Sue deVall
COVER LOGO Knick Knickerbocker
MAILING Harry Kimbrough
PRODUCTION Jim Zinanti, Reda Herriott, and Dr. Mau

The *Rambler* (USPS 053-410) is published monthly by The WASATCH MOUNTAIN CLUB, Inc., 888 S., 200 E., suite. 207, Salt Lake City, UT 84111-4220. Telephone 363-7150. Subscription rates of \$12.00 per year are paid for by membership dues only. Second class postage paid at Salt Lake City, Utah.

POSTMASTER: Send address changes to *The Rambler*, Membership Director, 888 S, 200 E., Salt Lake City, UT 84111-4220. CHANGE OF ADDRESS: This publication is not forwarded by the Post Office.

The right is reserved to edit all contributions and advertisements and to reject those that may harm the sensibilities of WMC members or defame the WMC.

Copyright 1995, Wasatch Mountain Club

Office Hours: 9:00 am - 1:00 pm Wednesday
363-7150
Address: 888 S., 200 E., Suite. 207
Salt Lake City, UT 84111-4220
Office Asst.: Jean Frances

PROSPECTIVE MEMBER INFORMATION

Applicants must attend two official WMC activities other than socials. Activities are listed in *THE RAMBLER* which is the official publication of the Wasatch Mountain Club, published by and for its members. Prospective members may receive *THE RAMBLER* for two months by writing the Membership Director at the above address and enclosing a check for \$5.00 payable to the Wasatch Mountain Club. (There is a \$10.00 charge for returned checks.) An application form may be found in the center of *THE RAMBLER*. Ask the activity leader to sign your form after completing the activity.

MEMBERS: If you have moved, please call the WMC office or send your new address to the Membership Director. Allow 45 days for address changes. If you did not receive your *RAMBLER*, contact the Membership Director to make sure the WMC has your correct address. Replacement copies are available, while they last, at the WMC office during office hours.

TO SUBMIT AN ARTICLE or PHOTOGRAPH: Articles should be on diskette, MS/DOS or Macintosh format, and preferably in Microsoft Word or WordPerfect form. Label the diskette with your name and identify what file(s) are submissions. Enclose a hard copy in case your diskette cannot be read. Mail submissions to Publication Director at the office address, or hand deliver them to the WMC office. Leave hand deliveries in the **Blue** box outside the door. The deadline is 6:00 pm on the 15th of the month. Photos of all kinds, B&W and color prints, and slides. Make sure that the photo is labeled with the photographer, date, and names of people. Unless a stamped, self-addressed envelope is provided, returned submissions will be available in the **Red** box outside the office door about 1 week after publication.

WMC Home Page
<http://www.drmpark.com/~wmc>

***The Rambler* - January 1996 Vol. 73 No. 1**

Contents

Cover Photo Caption	2
Bulletin Board	4
Classy Ads	4
WMC Lodge Rental	4
Tennis Network	4
WMC Official Hiking Map	4
Utah Ski Council Meeting	4
In Remembrance of a Dear Friend	5
Wasatch Mountain Club Activities	6
From the Ski Touring Director	13
Avalanche Beacon Prices	13
Winter Sports Parking	14
From the Lodge Director	15
From the Boating Director	16
Governing Board	17
Commercial Advertising Rates	17
Financial Report	17
WMC Banquet Invitation	18
Coming Attractions	20
WMC BOARD OPENINGS	21
Governing Board Nominations	21
Trip Talks	23
Westwater Canyon	23
Yellowstone Backpack	24
Great Salt Lake Issues Symposium	25
Robert Frohboes Avalanche Safety Clinic	26
Audrey Kelly Ski Clinic	26
Political Alert	28
Membership Application	29

WMC Purpose

(Article II of the WMC Constitution)

The purpose shall be to promote the physical and spiritual well being of its members and others by outdoor activities: to unite the energy, interests and knowledge of students, explorers and lovers of the mountains, deserts and rivers of Utah; to collect and disseminate information regarding the Rocky Mountains in behalf of science, literature and art; to explore and picture the scenic wonders of this and surrounding states; and to foster awareness of our natural areas including their plants, animal and bird life.

Cover Photo

WMC Lodge, July '94, photo by Jim Zinanti.

**MOUNTAIN
HARD
WEAR**



Presents

**ED VIESTURS
ENDEAVOR 8000**

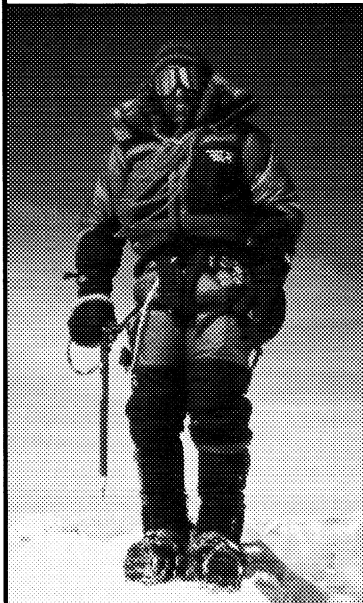
The EdVenture Continues...

at Kirkham's
**MONDAY,
JANUARY 15th
7:30 p.m.**

Free Admission



**Ed is the first American to Summit the
Six Highest Peaks without Supplemental Oxygen**



He calls it ENDEAVOR 8000. Ed will reach the summit of all 14 of the world's 8,000 Meter peaks without the use of supplemental oxygen. With 9 of them already under his belt, he's well on his way.

FACT: The lower the altitude, the denser the oxygen. At altitudes where Ed is climbing, the volume of oxygen is practically 1/3 of the volume for us flatlanders. Most mountaineers aspiring to climb these heights equip themselves with bottled oxygen to stave off the negative affects of the oxygen-deprived air.

A small community of mountaineers have the skill to "safely" climb these outrageously awesome peaks. But only a scattered few who can do it like Ed does; at top speed and no extra air!

**Join Ed for slides and discussion
of his on-going Endeavor**



Kirkham's®
outdoor products



3125 South State Street (801) 486-4161 Open: Monday - Friday 9:30 to 9:00 Saturday to 7:00

BULLETIN BOARD

WMC LODGE AVAILABLE FOR RENTAL USE

The WMC Lodge can be rented on a half or full day basis. Full day rate is \$225. Contact Rich Osborne (1-801-647-0205) for information.

WMC OFFICIAL HIKING MAPS

Copies of the official WMC Map, "Hiking The Wasatch" are available to WMC members at a discount. The map retails for \$10 but members can obtain copies for \$8.50 including sales tax. The Club also profits from these sales. The maps are available at the WMC office during office hours and on many WMC activities.

UTAH SKI COUNCIL MEETING JANUARY 4, 1996 Salt Lake Hilton 7:00pm

Bill Murphy, owner of Brian Head Cross Country and Extreme Mountain Sports in St. George, will be the guest speaker. Bill has pioneered backcountry skiing, mountain biking, hiking, and exploring in regions of Southern Utah. From the La Sals to the East to the Pine Valley mountains to the West and just about everything in between, Bill has been there to test his backcountry skills. Come and meet Bill and enjoy a wonderful slide show.

The meeting is free to the public, for more information, call the Utah Ski Council Hot Line at 699-0560 or Bob Grove at 483-6107.

TENNIS NETWORK

We are a group of WMC members that play tennis regularly. Our levels range from 2.5 - 4.0. If you are interested in playing during the cold winter months, please contact Jeri at 561-3777.

Classy Ads:

Notice: *The Rambler* cannot accept any ad that is inconsistent with the purposes of the WMC or offends the sensibilities of Club members. Send your ad, with enclosed payment if required, to Sue DeVall, 11730 S., 700 W., Draper, UT 84020. Please submit by the 12th of the month to ensure your ads inclusion.. Advertising rates are \$5.00 for up to 20 words and 20¢ for each additional word. WMC members may place **free** ads for used recreational gear or for private **non-commercial and not-for-profit** activities.

DATA ENTRY VOLUNTEER NEEDED !!!!!!!

The Club is in need of willing or competent or skilled (in that order) data entry people to help keep our data-base current as we receive new membership applications and renewals. The work load will be 100-200 renewals (minimal data entry per item) and 20-30 new applications (moderate data entry) each month. For a quick typist, this isn't a lot. (For me, its weeks!) If you can help, even for a small bit of time each month, please call Kyle Williams 273-8076

FOR SALE - Ramer Echo 2 **Avalanche Rescue Transceiver**, \$40. plus \$5. shipping. Returnable within 30 days, if not satisfied. Scott Haywood, PO Box 252, Austin, Texas 78767. phone 512-462-2797.

FOR SALE - Expedition Tent, Kelty Quattro Expedition, 4 pole dome with a large vestibule, \$400 new, this tent has never been used, you can have it for \$300.00 Down **Sleeping Bag**, L.L. Bean long mummy bag, rated at +20F, 2 1/4 lbs., \$100.00. (485-9623 H, 777-9409 W)

In Remembrance of a Dear Friend

by Christine Allred
December 10, 1995

The sunlight is slanting through my windows this Sunday morning, Dec. 10th. The sky is a patchwork of blue, white, and gray as clouds drift by. A few finches and sparrows are chattering gaily as they forage at my feeder, picking out delectable oiled sunflower seeds from the more mundane mix. Although snow is in short supply so far this winter, there might be some cross country or showshoeing sport to be had in higher elevations. Wonder if Pat and Bill might be interested?

Then I catch myself, for Pat is no longer with us – and I can still hardly fathom that fact, though it has been several weeks since the evening call came from Bill to tell me she had died. Yes I had known her cancer was terminal for some time, but still? Maybe? Some folks do have remissions, and what a gap would be left in so many lives if such a vital wife, mother, sister, and friend should go.

Patricia Briggs Yates died at her home in Emigration Canyon on November 20, 1995. The ovarian cancer won despite her valiant fight over the past two years. At the Memorial Service on November 24th attendees were invited to share remembrances of Pat and many did so. And that prompted me to do the same for this issue of *The Rambler* so that Pat's friends in the Wasatch Mountain Club who do not know of her death, or were unable to be at the service, might pause to acknowledge the beauty, passion, vitality, and enthusiasm which characterized this unique woman.

She was a champion of environmental and conservation causes – from the years in which she was instrumental in such issues in Marin County, California, to most recently as a member of the Utah State Water Quality Board, a member of Project 2000 Committee on Utah Wilderness, and the Governor's Committee on Wildlife Issues. An avid birder, Pat served as president of Great Salt Lake Audobon, then as Chair of the Audobon Council in Utah. The few mentioned above are just a smattering of the positions and organizations which she assisted with her time, funds, and talent.

Personally, Pat was an inspiration to me, broadening my horizons in classical music, good books, drama, and especially the wonder of birds by inviting me to join her in such activities. As I flip through my Peterson Field Guide, there are numerous

notations including Pat's name for initial sightings. Quite frequently, on WMC hikes, we would be left behind as time was taken to "stop and hear the birds", or to wander off the main trail in pursuit of an elusive specimen. One of my fondest memories is a visit to the Bear River Bird Refuge after our Book Club had finished reading Terry Tempest Williams' autobiographical "Refuge: A History of Time and Place." The annual Audobon Christmas Bird Count will be hard this year as Pat will not be leading our contingent.

She challenged me to stretch my abilities, to look at things from different angles, to see and enjoy the many diversities in our world, to minimize looking back on what-ifs, shoulda's, coulda's, and to focus on the present and future. Generously she would open her fantastic canyon home for all sorts of social functions – WMC socials, potlucks after the annual Christmas Bird Count, and periodic meetings of her Book Club. I, and many of you, were included at these events which featured good food, some wine, and a fascinating, eclectic group of people – how Pat loved good conversation!

John Greenleaf Whittier: For all sad works of tongue or pen, the saddest are these: "It might have been!" In a conversation several weeks prior to her final decline, Pat expressed just the opposite; she reflected on the good life she had led and talked about all of the beautiful images she had stored up. Of course she wished for more time, but if it was not to be given her, she was not one to kick against the pricks of fate. Would that each of us could accept our mortality with such grace.

Once when our Book Club was faltering, Pat revived us, saying she was "Keeper of the Flame." Her candle has now guttered and quenched, but Oh, What a bright light it shed!; How grateful are her many friends to have been part of that circle. Her physical presence will be sorely missed, but for me, Pat will always be around when I raise my binoculars to focus on a bird, when the flow of symphonic music reaches my ears, when I stop to drink in the beauty of spring wild flowers or a fall vista of gold and russet leaves, when I pause to breathe deeply of crisp, cold air on a snowbound mountain trail, and hear chick, chickadee in a nearby pine.

WASATCH MOUNTAIN CLUB ACTIVITIES

Only activities approved by the appropriate WMC director can be listed in the Club activities section of *The Rambler*. Send your proposed

*** Participation in any WMC activity can be dangerous. It is **your** responsibility to evaluate your own preparedness and ability to safely participate in any activity.

*** On ski tours requiring avalanche transceivers, be advised that this season, only beacons compatible with the new international frequency standard (457 kHz) will be accepted on WMC ski tours.

activity for approval to the hiking, boating, skiing, etc., director for inclusion in their activity schedule. Those activities sent directly to *The Rambler* without approval will not be published.

JAN 1 Mon

SKI TOUR: NEW YEAR CRACK OF NOON SKI NTD+ to the Lake Mary Overlook behind the Wasatch Mtn. Club lodge. Tom Silberstorf(255-2784) says to meet at 12:00 at Butler School or at 12:30 at the WMC lodge. Tom says he'll stop at the overlook or go on depending on the crowd and the night before.

JAN 3 Wed

CLIMBING- WASATCH FRONT GYM- BEGINNERS WELCOME! Join Herb Hayashi any time after 5:30 for an evening of indoor climbing at 427 W 9160 S. Cost is discounted for WMC members! \$7.00 per visit (instead of \$8 reg.), or monthly memberships are available. If you would like to learn how to climb, call Herb (278-2620) and he will be glad to help you get started. WMC members also get a discount on rental gear! NOTE- Since this is a professionally monitored, controlled environment, helmets are not required for this activity.

JAN 3 Wed

WMC BOARD MEETING (MSD+++) As usual, all WMC members are welcome to attend the monthly business meeting of the Governing Board. We will meet at the WMC office 888 South 200 East at 7:00 PM. We will dine beforehand at the Cafe Trang 818 S. Main Street at 6:00 PM. Please join us.

JAN 4 Thu

SNOWSHOE: MILLCREEK IN THE MOONLIGHT (NTD) Join Mark Wolfman Jones (486-5354) for a moonlight tour up Millcreek Canyon road on this full moon Thursday night. Mark promises to snowshoe until the moon brightens the night. Meet at Skyline High's east parking lot at 6:30pm.

JAN 5 to 6 Fri-Sat

SKI TOUR: BUNCH GRASS YURT north of Logan has long wide powder bowls minutes from the front door. It sits at 8400' beside an aspen forest. Pack in on Friday, stay overnight Friday and Saturday, and pack out on Sunday afternoon. Capacity is 6 people. Cost is estimated at \$48.00. PS We got a full moon for this one. Call the yurtmeister, Tom Walsh (969-5842 after 7:00 pm) to sign up.

JAN 5 Fri

SOCIAL: MOON-LIGHT SKI TOUR (NTD-) Full moon cross-country skiing on the Bonneville Golf Course. (Beginning level) Meet at the entrance to the golf course on Conner --one block east of Foothill and just south of Sunnyside (approx. 1000 South and 2050 East) -- at 6:30 pm. Bring a flashlight for equipment adjustments. Dogs and kids with responsible adults are ok. Call prior, if there is minimal snow. Afterward, we'll retire to the fine pastries, hot drinks, and other goodies of The Bakery or other local eating establishment. Contact Frank (533-9219) with any questions.

JAN 6 Sat

SKI TOUR: MT. TIMPANOGOS, This NTD+ Tour take you to some spectacular views with Leader Pete Mimmick. Meet at 9 am Park and Ride, 72nd so or 9:30 Park and Ride Exit #287. Track or tour skis OK, bring a lunch. Call Pete at 801-377-2330.

JAN 6 Sat

SKI TOUR: REYNOLDS PEAK MOD via Mill D. Hank Winauer is leading this tour. Meet at 9 am, parking lot #2. Beacons, Shovels and Skins are required. Call Hank at 277-1997 for more information.

JAN 6 Sat

SKI TOUR:: BROADS FORK MSD Leader George Westbrook says this MSD tour requires an early start. Of course, you'll need Beacons, Shovels and skins. Call George at 942-6071 for information, time and meeting place.

JAN 6 Sat

SNOWSHOE: GREENS BASIN (NTD) Join the Thursday night Wolfman Mark Jones (486-5354) Saturday morning for a pant by pant description of the previous Thursday evening moonlight tour while snowshoeing into Greens Basin. Meet Mark at Butler Elementary School at 10:00am.

JAN 6 Sat

SNOWSHOE: RED PINE (MOD) Lady Leslie Woods has consented to discarding the skis today and taking up with another fun group-the snowshoers-for a stomp to Red Pine Lake. Meet Leslie (484-2338) at Butler Elementary at 9:00am.

JAN 6 Sat

SOCIAL: 14 DAYS TILL THE BACCHANALIA BALL AND BANQUET --HAVE YOU SENT IN YOUR CHECK YET?

JAN 7 Sun

SKI TOUR: INSTRUCTIONAL: The annual **Audrey Kelly** beginners ski clinic. This traditional event for beginners and anyone looking to increase their basic cross country skills will meet at 9 am. A hot lunch is provided with the clinic for a fee of 5 dollars. Please call Harry Kimbrough at 288-1858 for registration and meeting place.

JAN 7 Sun

SKI TOUR: MT RAYMOND MOD+ Co-leaders Karen and Dennis Caldwell will lead this tour starting at 8 am. Requires Beacons, Shovels and Skins. Call the dynamic duo at 942-6065 for information and meeting place.

JAN 7 Sun

SNOW REMOVAL AT THE LODGE. To prevent a recurrence of the damage to the lodge which we experienced last winter (one dormer crushed, another structurally damaged) we need to clear snow on a regular basis. Since weather conditions cannot be anticipated, please call Martin (968-1252 or 942-8902) to find out if the tentatively scheduled snow clearing is needed.

JAN 7 Sun

SNOWSHOE: LOWER NEFF'S CANYON (NTD/EL) Join Loraine Lovell for an easy-inexperienced snowshoers especially welcome-paced snowshoe tour in Lower Neff's Canyon. Meet Loraine at Skyline High's east parking lot at 9:30am.

JAN 7 Sun

SNOWSHOE: SNAKE CREEK PASS (MOD-) Norm Deerslayer Pobanz (266-3703) will lead a light moderate snowshoe tour up Snake Creek Pass. (Beware of the snakes on the tour with you ladies)! Meet Norm at Butler Elementary at 9:30am.

JAN 7 Sun

SOCIAL: ENTERTAINMENT COMMITTEE PLANNING MEETING Come join us for a fun evening of exchanging entertaining ideas with the WMC Entertainment Committee. We have had a great year, and we want YOUR ideas on what YOU want for WMC entertainment in 1996! We'll make home-made pizzas prior to the meeting - plan on bringing your favorite pizza ingredients, and we'll put together some great food! Time? Pizza making begins at 6:30 p.m., with the meeting to follow. Place? Sam's place, 5693 S. Whispering Pine Dr. Directions? Take I-15 to the 5300 South exit; go east to the end of the street, then go right onto Vine Street. Go through the first light (5600 South), then take the second left, which is Rain Forest. Go to the end of the street, and look for the "flag" in the window. Questions? Call Sam (262-6698) or Craig (521-5408).

JAN 10 Wed

CLIMBING- WASATCH FRONT GYM- BEGINNERS WELCOME! Join Herb Hayashi any time after 5:30 for an evening of indoor climbing at 427 W 9160 S. Cost is discounted for WMC members! \$7.00 per visit (instead of \$8 reg.), or monthly memberships are available. If you would like to learn how to climb, call Herb (278-2620) and he will be glad to help you get started. WMC members also get a discount on rental gear! NOTE- Since this is a professionally monitored, controlled environment, helmets are not required for this activity.

JAN 12 Fri

SOCIAL: SING-A-LONG (NTD!!) Join Frank Bernard (533-9219) at 7 pm for this "second season" session of folk and joke singing. Bring your voice and/or guitar to Frank's home at 417 N. Center St. in Capitol Hill (about 130 West 400 North), and we'll entertain ourselves in this 100% audience participation event. Bring your own beverages and snacks - an enthusiastic attitude is the only other requirement! If you have questions, call Frank.

JAN 13 Sat

SKI TOUR: UINTAS: BEAVER CREEK TRAIL, NTD Meet leader Cindy Cromer for this full day outing at 9 am at the Parleys Way K-Mart. Bring a lunch for a great day on the trail. Call Cindy at 355-4115 for details.

JAN 13 Sat

SKI TOUR: DAYS FORK FROM ALTA. MSD Walter Haas will lead this difficult tour with an early start. Requires Beacons, skins and shovels. Call Walt at 534-1262 for time and place.

JAN 13 Sat

SKI TOUR: DOG LAKE NTD with fearless leader Jim Piani. Meet Jim at 9am Parking lot #2 for this tour. Call 272-3921 for answers to your questions, and more!

JAN 13 Sat

SKI TOUR: WOODROW WILSON PEAK MSD Leader Pat McEwen will lead this MSD tour beginning at 9 am. Do to the "Super Tour" status call Pat for meeting place. Use of the Ski Bus is required. Beacons, Shovels and Skins required. Call Pat at 571-5033 for details.

JAN 13 Sat

SNOWSHOE: BROADS FORK (MOD) Join leader Knick Knickerbocker or is it Knickerbocker (272-5358) on a tour up BROADS Fork in Big Cottonwood Canyon. Meet Knick at Butler Elementary at 9:30am.

JAN 13 Sat

SNOWSHOE: SCOTT'S PASS (NTD+) Anne Boeder (486-6368), one of our newer WMC members, has consented to lead a snowshoe tour to Scott's Pass in Big Cottonwood Canyon. Meet Anne at Butler Elementary at 9:30am.

JAN 13 Sat

SOCIAL: 7 DAYS TILL THE BACCHANALIA BALL AND BANQUET --HAVE YOU SENT IN YOUR CHECK YET?

JAN 14 Sun

SKI TOUR-SNOWSHOE MIXER: UINTAS: NORWAY FLATS. Join Cheryl Soshnik for a MOD-tour meeting at 9 am, Kimball's Junction K-mart. Skins are required if you don't know how to wax. This is a fine area for snowshoeing as well. Call Cheryl at (801)649-9008 for details and additional equipment.

JAN 14 Sun

SKI TOUR: CATHERINE PASS MOD with Tom Silberstorf. Tom will lead this tour starting 9 am at Butler elementary school. Beacons, Skins and shovels are required. Questions, call Tom at 255-2784.

JAN 14 Sun

SKI TOUR: LEADERS CHOICE NTD with Charle Sherman. Charle will lead a tour starting by meeting at 9am at parking lot #2. Skins are recommended. Call Charle to see if he has decided where to go at 532-1952.

JAN 14 Sun

SKI TOUR: MT. RAYMOND/BOX ELDER MSD tour with Rolf Doebbeling. This tour meets at 8 am with a limit of 8 people. Call Rolf at 467-6636 for meeting place. Skins, Beacons and Shovels are required.

JAN 14 Sun

SKI TOUR: SILVER FORK NTD This tour with leader Janis Chatwin (her favorite tour) starts at 10am meeting at Parking lot #2. Skins are required unless you can convince Janis you have very sticky skis. Call for more info at 255-3732.

JAN 14 Sun

SNOWSHOE: DESOLATION LAKE (MOD) Join Gretchen Siegler (575-8526) on a moderate snowshoe tour to Desolation Lake. Meet Gretchen at Butler Elementary at 9:30am.

JAN 14 Sun

SNOWSHOE: WILLOW LAKE (NTD) Tom Willis (485-0370) will lead an easy snowshoe tour to Willow Lake. Meet Tom at Butler Elementary at 9:30am.

JAN 14 Sun

SOCIAL: SOUL FOOD POTLUCK Come join us for an evening of good home-style cooking, featuring the favorite dish of folks in the South - SOUL food. You know-fried chicken, ribs, sweet potato pie, cole slaw, and much more! The festivities will commence at 5:00 p.m. Place: Polo Club Clubhouse (3660 S Highland Drive. Look for the Polo Club sign just south of the China City Restaurant. Turn west into the Polo Club, bear left at the first opportunity. Clubhouse is the next right, located just beyond the pool). Cover charge: \$2/members, \$4/non-members. Contact this evening's gracious hostess, Patti O'Keefe (973-7984) with any questions you have..

JAN 16 Tue

SOCIAL: CHECK DUE TO SAM FOR THE BACCHANALIA BALL AND BANQUET (OR PAY MORE AT THE DOOR!).

JAN 17 Wed

CLIMBING- WASATCH FRONT GYM- BEGINNERS WELCOME! Join Herb Hayashi any time after 5:30 for an evening of indoor climbing at 427 W 9160 S. Cost is discounted for WMC members! \$7.00 per visit (instead of \$8 reg.), or monthly memberships are available. If you would like to learn how to climb, call Herb (278-2620) and he will be glad to help you get started. WMC members also get a discount on rental gear! NOTE- Since this is a professionally monitored, controlled environment, helmets are not required for this activity.

JAN 20, Sat.

SKI TOUR LEADERS CHOICE (MOD) with Dave Morris and Theresa Overfield. (359-6274) This is a call to register and to find out where these folks are going. These folks are veterans of the hills; so whatever they choose will be good! Avalanche beacons (457 khz compatible please), skins and shovels required.

JAN 20, Sat.

SKI TOUR POWDER PARK #1 (MOD) with Karen Perkins.(272-2225) Meet at lot #2 on Ft. Union Blvd. (about 3360E) at 9:00 am. A perennial favorite. Follow Karen into this excellent area east of Mill D. Avalanche beacons, skins and shovels required.

JAN 20, Sat.

SKI TOUR SILVER FORK (NTD) with Don Thole (569-0121) Meet at lot #3 on Ft. Union Blvd. (about 3420E) at 9:00 am. This is an excellent beginners ski tour. Backcountry or track skis are OK. Bring a light lunch.

JAN 20 to 21 Sat-Sun:

SKI TOUR: BALDY KNOLL YURT east of Driggs, Idaho in the Tetons has intermediate bowls and hills with nearby access to steeper and more adventurous terrain. Pack in on Saturday, stay Saturday and Sunday nights, and pack out Monday afternoon. Capacity is 8 people. Cost is estimated at about \$40.00. Call the yurtmeister, Tom Walsh (969-5842 after 7:00 pm) to sign up.

JAN 20 Sat

SNOWSHOE: AMERICAN FORK CANYON-TIMPOONEKE AREA (MOD) Russ Pack (572-5653) will be leading a snowshoe tour to a new area. Pack yourself a good lunch and be ready to cover 6 to 7 miles round trip and 1500ft elevation change. We may be competing with the snowmobiles on the road areas but we'll leave the Timpooneke road at Bear Canyon, take a trail to Julie Andrews Meadow, believe it or not, and have lunch surrounded by Mt. Timpanogos. On the return leg we'll get to use a portion of the Great Western Trail-that's what the trail markers say-back down into the Timpooneke campground area. Meet Russ at the 7200So park and ride at 9:00am. 4X4 vehicles may be advisable.

JAN 20 Sat

SNOWSHOE: DAYS FORK (MOD) Join Holly Smith (272-5358) for a moderate snowshoe tour to the second meadow up Days Fork in Big Cottonwood Canyon. Meet Holly at Butler Elementary at 9:30am.

JAN 20 Sat

SOCIAL: BACCHANALIA BANQUET AND BALL (AKA THE ANNUAL AWARDS BANQUET) ALL WMC MEMBERS are cordially invited to the annual Bacchanalia Banquet and Ball. Yes, it's time to bring those semi-formal clothes out of the closet for all of your WMC friends to see! Join us for a delightful evening of socializing, dinner, and dancing to DJ Don Woodbury's wide selection of music. The Place? The Best Western Olympus Hotel, conveniently located at 161 West 600 South near downtown Salt Lake City (telephone number 521-7373). Recognition Awards will be given to WMC members who have made significant contributions to the club during 1995. All-inclusive cost: \$19 per person paid in advance (due to Sam Kievit no later than Tuesday, January 16 - see the advertisement in The Rambler for details), or \$25 at the door (due to late charges the hotel will assess). We want to see YOU there, to help The WMC kick off another eventful and fun year!

JAN 21, Sun.

SKI TOUR MT. NEBO (MSD) with George Westbrook. (942-6071) Call to register and find out where to meet. George plans on staying in Nephi Saturday night to facilitate a very early start Sunday morning. And of course, avalanche beacons (457 khz compatible please), skins and shovels required.

JAN 21, Sun.

SKI TOUR REYNOLDS PEAK (MOD) with our favorite ski tour leader Jim Piani. (272-3921) Meet at lot #2 on Ft. Union Blvd. (about 3360E) at 9:00 am. This is an area with consistently good snow. Depending on conditions (Jim's condition that is, i.e. how late he was up the night before!) he may stop short at Tom's hill instead. Avalanche beacons (457 khz compatible please), skins and shovels required.

JAN 21, Sun.

SKI TOUR, LEADERS CHOICE (NTD) with Ken Kelley (1-801-649-3520). Please call to register. Ken has a lot of time under his boards, and will come up with a great ski tour!

JAN 21 Sun

SNOW REMOVAL AT THE LODGE. 2:00 PM. Please call Martin (968-1252 or 942-8902) to confirm before driving up.

JAN 21 Sun

SNOWSHOE: DOG LAKE (NTD+) Anne Boeder (486-6368) will be leading a snowshoe tour to one of the popular destinations in Big Cottonwood Canyon. Meet Anne at Butler Elementary at 9:30am.

JAN 21 Sun

SNOWSHOE: LAKE BLANCHE (MOD+) Chris Baierschmidt (272-7952) who keeps saying she is not really a twin will be leading the tour today to lovely but frozen Lake Blanche. Perhaps the other "twin" will join Chris. Check it out. Meet Chris at Butler Elementary at 9:30am.

JAN 24 Wed

CLIMBING- WASATCH FRONT GYM- BEGINNERS WELCOME! Join Herb Hayashi any time after 5:30 for an evening of indoor climbing at 427 W 9160 S. Cost is discounted for WMC members! \$7.00 per visit (instead of \$8 reg.), or monthly memberships are available. If you would like to learn how to climb, call Herb (278-2620) and he will be glad to help you get started. WMC members also get a discount on rental gear! NOTE- Since this is a professionally monitored, controlled environment, helmets are not required for this activity.

JAN 24 to 28 Wed-Sun

SKI TRIP-OUT OF TOWN: SIERRAS Bill Robbins (466-0492) has a family cabin North of Reno that he is offering to share for a WMC long weekend. The cabin, which sleep 8 comfortably, is about 6 miles on an unplowed forest service road, with about a 600' elevation change. Bill says the terrain is similar to that in the Uintas, gradual mostly, and safe from avalanches, with challenging terrain available around the cabin. Clark's Peak is a 1500' climb close by. The cabin is heated, but you'll need to carry in water and food. The cost of the trip will be only for the food, fuel, and a small donation for the use of the cabin. Snow should be good the end of January, but if there's a winter hot-spell, Bill may reschedule the trip until better (worse) weather. Skins and beacons are only needed if you venture into the surrounding difficult terrain. Call Bill to register.

JAN 24 Wed

WINTER ACTIVITIES INSTRUCTIONAL: "Robert Frohboes" Annual Avalanche Clinic at the Unitarian Church (6th South 13 East) at 7:30 pm with the Utah Avalanche Forecast Center. Learn what dangers lie underneath the white winter beauty! Become aware and Stay alive! See the ad in this month's Rambler for more information. A \$5.00 donation is requested.

JAN 27 Sat

HIKE: ANTELOPE ISLAND. (MOD) Yes, that's right. A hike. Right in the middle of winter. Enjoy exhilarating conditions and splendid views of the Great Salt Lake and surrounding areas. You'll probably see some bison, too. Dress suitably, bring a lunch and good hiking boots. Warm, dry boots with good traction are required in case of snow and ice on the trail. Call leader Robert Turner (544-0605) to register and get details (meeting time and place, hike information, etc.). Most likely the day will be sunny and gorgeous, but if the weather is rotten, call Robert before venturing out.

JAN 27 Sat.

SKI TOUR, LEADERS CHOICE (MOD) with Dallas Chopping. Please call (292-6298) to register. Dallas is hedging his bets as this has been a strange, late winter. Single new frequency (457 kHz) or dual frequency beacons and skins and shovels are needed.

JAN 27 Sat.

SKI TOUR, POWDER PARK #2 (MOD) with Martin Gregory. (582-2403) Meet at lot #4 on Ft. Union Blvd. (about 3600 E.) at 9:00 am. This drainage north of Desolation Lake usually provides some excellent powder. Single new frequency (457 khz) or dual frequency beacons and skins and shovels are required.

JAN 27, Sat.

SKI TOUR, UPPER SIDING, UINTA'S (NTD) with Phil Fikken. (583-8499H, 567-7331W) Meet at the K-Mart parking lot on Parleys way at 8:00 am. Providing we have enough snow this is a very easy logging road tour into the country north of the Mirror Lake Highway. Skins will help if you don't have no-wax skis or can't wax (God Forbid!) If we have no snow in the Uintas, this tour may be reassigned to the Wasatch.

JAN 27 Sat.

SKI/SNOWSHOE: AVALANCHE TRANSCEIVER WORKSHOP. with Brian Barkey (1-801-394-6047) Meet at the Butler elementary school Parking lot at 12:00 noon. Please bring some skis or snowshoes to get around on the snow and a beacon if you have one. Please call Brian to help teach folks about saving lives.

JAN 27 Sat

SNOWSHOE: GREENS BASIN (NTD) Bart Bartholoma (H, 277-4093, W, 594-5679), who some times masquerades as an indian, will be leading a hunting party into Greens Basin. He will be looking for that deep white stuff to sink your snowshoes into. Join Bart at Butler Elementary at 9:30am.

JAN 27 Sat

SNOWSHOE: UINTAS-NORTH FORK OF NORWAY FLATS (MOD) Mark Jones (486-5354) will be leading an off-trail deep powder exploratory tour for experienced snowshoers only. Call Mark for more details or meet him at Skyline High's east parking lot at 9:00am.

JAN 28, Sun.

SKI TOUR, BEAR TRAP (MOD) with Pat Kottcamp (467-7231) Meet at lot #3 on Ft. Union t (about 3420 E.) at 9:00 am. This is an excellent area for backcountry skiing. Single new frequency (457 khz) or dual frequency beacons and skins and shovels are required.

JAN 28, Sun.

SKI TOUR, CATHERINE'S PASS (NTD+ or MOD-) with Phyllis Anderson. (943-8500) Meet at lot #4 on Ft. Union Blvd. (about 3600 E) This is a good tour to the area southwest of Lake Mary and involves a bit of a pace change near the end as you merge onto one of the easier Brighton Downhill runs. Avalanche beacons (457 khz compatible please) skins and shovels required.

JAN 28, Sun.

SKI TOUR, LEADERS CHOICE (MOD) with Leslie Woods. (484-2338) Meet at the Butler Elementary school Parking lot (2700 E. 7000 S) at 9:00 am. Leslie will hedge her bets in an attempt to find some killer powder. Hopefully everyone will have avalanche beacons compatible with the new frequency, and some skins and shovels.

JAN 28, Sun.

SKI TOUR, STRAWBERRY PEAK VIA DANIEL'S PASS (MOD) with Brad Yates. (583-1205) Meet at the K-Mart near Kimball Junction turnoff to Park City at 9:00 am. Brad is dovetailing this tour, west of Daniel's Pass, with Vince DeSimone's traditional spaghetti dinner following the tour. Besides your spaghetti bib, you'll also need an avalanche beacon, skins and shovel for this one.

JAN 28 Sun

SNOWSHOE: ALBION BASIN (NTD+) Doug Stark (277-8538) will be leading beginners- and those looking for an easy paced tour- around the beautiful and spectacular Albion Basin area. Meet Doug at Butler Elementary at 9:00am.

JAN 28 Sun

SNOWSHOE: LAKE CATHERINE (MOD) Janet Friend (268-4102) will lead snowshoers up hill all the way to frosty, ice covered Lake Catherine. Meet Janet at Butler Elementary at 9:30am.

JAN 28 Sun

SOCIAL: 9TH ANNUAL SPAGHETTI PARTY Vincenzo De Simone invites us to his annual evening of Italian cuisine and fellowship by the fire. Cost: \$5 --includes all food-- this is NOT a potluck! Time: 6 pm. Hot chocolate and coffee provided, bring other beverages of choice. Directions: I-80 to Park City exit (Hwy. 224), heading into Park City... Turn Left at Meadows Drive (just past the large white barn on the right). Drive to the crest of the hill, turn left and up the hill to the T. Turn right and follow the sounds to the fun. (No pets or children, please). Questions? Contact Vincenzo at 649-6805.

JAN 31 Wed

CLIMBING- WASATCH FRONT GYM- BEGINNERS WELCOME! Join Herb Hayashi any time after 5:30 for an evening of indoor climbing at 427 W 9160 S. Cost is discounted for WMC members! \$7.00 per visit (instead of \$8 reg.), or monthly memberships are available. If you would like to learn how to climb, call Herb (278-2620) and he will be glad to help you get started. WMC members also get a discount on rental gear! NOTE- Since this is a professionally monitored, controlled environment, helmets are not required for this activity.

FEB 1 Thu

SOCIAL: MOON-LIGHT SKI TOUR (NTD-) Full moon cross-country skiing on the Bonneville Golf Course. (Beginning level) Meet at the entrance to the golf course on Conner --one block east of Foothill and just south of Sunnyside (approx. 1000 South and 2050 East) -- at 6:30 pm. Bring a flashlight for equipment adjustments. Dogs and kids with responsible adults are ok. Call prior, if there is minimal snow. Afterward, we'll retire to the fine pastries, hot drinks, and other goodies of The Bakery or other local eating establishment. Contact Frank (533-9219) with any questions.

FEB 2 to 3 Fri-Sat

SKI TOUR: TOMASAKI CABIN IN THE LA SALS Steep and Deep! With good snow the runs are long and fast, with 2000' vertical exposure just outside the door. Pack in on Friday, stay Friday and Saturday nights and depart Sunday afternoon. Capacity is 10 people. Cost is undefined at press time but is reasonable. Call the yurtmeister, Tom Walsh (969-5842 after 7:00 pm) to sign up.

FEB 2 Fri

SOCIAL: SING-A-LONG (NTD!!) Join Frank Bernard (533-9219) at 7 pm for this third session of the winter season of folk and joke singing. Bring your voice and/or guitar to Frank's home at 417 N. Center St. in Capitol Hill (about 130 West 400 North), and we'll entertain ourselves in this 100% audience participation event. Bring your own beverages and snacks - an enthusiastic attitude is the only other requirement! If you have questions, call Frank.

FEB. 3, Sat.

SKI TOUR, DESERET PEAK (MSD) with George Westbrook (942-6071) Call to register and get the details about the very early start. This peak offers some great views of Rush Valley and the West Desert with some long bowls on the descent. Avalanche beacons, skins and shovels required.

FEB. 3, Sat..

SKI TOUR, LEADERS CHOICE (MOD) with Levi Todd. (278-3644) Meet at Lot #4 on Ft. Union Blvd. (about 3600 E) at 9:00 am. Levi is hoping to do Wolverine Bowl, but is leaving his options open depending on snow and weather conditions. Hopefully everyone will have the new single frequency or dual frequency beacons and of course, skins and shovels.

FEB. 3, Sat.

SKI TOUR, LOWER GREENS BASIN (NTD) with Oscar Robison. (547-1559) Meet at the Butler Elementary school Parking lot (2700 E. 7000 S) at 9:00 am. This is normally an excellent area for MOD or NTD tours. Pieps and shovels are not required, but bring them if you have them. Also, sturdy backcountry equipment and skins are required. (none of that wimpy track stuff please!).

FEB 3 Sat

SNOWSHOE: DOUGHNUT FALLS (NTD/EL) Dallas Chopping (292-6298) will be leading a family snowshoe tour to Doughnut Falls up Big Cottonwood Canyon. Meet Dallas at Butler Elementary at 10:00am

FEB 3 Sat

SNOWSHOE: LEADERS CHOICE (MOD+/MSD) Carolyn Clark (work phone 957-3238) will be leading today's heavy workout tour. Beacons are recommended. Call Carolyn to pre-register and get more details. Meet at Skyline High's east parking lot at 9:00am.

FEB 3 Sat

SNOWSHOE: SNAKE CREEK PASS (MOD) Anne Boeder (486-6368) will be leading today's attempt on Snake Creek Pass. This snowshoe tour is rated as moderately those who really know. Meet Anne at Butler Elementary at 9:30am.

FEB 4 Sun

SNOW REMOVAL AT THE LODGE 2:00 PM. Please call Martin (968-1252 or 942-8902) to confirm before driving up.

FEB. 4, Sun.

SKI TOUR, DANIEL'S PASS (NTD) with John Veranth. (278-5826) Meet at the K-Mart parking lot on Parley's way at 9:00 am. This is an excellent area east of Heber with gentle terrain.

FEB. 4, Sun.

SKI TOUR, LEADERS CHOICE (MSD) with Dave Smith (572-0346) Call Dave for details about a long, strenuous and rewarding day. Avalanche beacons skins and shovels are required.

FEB. 4, Sun.

SKI TOUR, REYNOLDS PEAK (MOD) with Mark McKenzie (486-4986) Meet at Lot#2 on Ft. Union Blvd. (about 3360 E) at 9:00 am. Mark will leads folks to this excellent area with consistently good snow in the Dog Lake area north of Big Cottonwood Canyon. Avalanche beacons (457 khz compatible please) skins and shovels required.

FEB. 4 Sun.

SKI TOUR, WASATCH PLATEAU VIA FAIRVIEW CANYON. (MOD) with Brad Yates (583-1205) Meet at the Park and Ride Lot at 7200 South and I-15 at 7:00 am. Brad, our esteemed hiking director, describes this place as a large plateau with numerous bowls descending from it. As this area is west of Price, a very early start is required. Avalanche beacons (457 khz compatible please) skins and shovels required.

FEB 4 Sun

SNOWSHOE: DAYS FORK (NTD) Join Barry Quinn (272-7097) on another fun filled snowshoe tour up popular Days Fork in Big Cottonwood Canyon. Meet Barry at Butler Elementary at 9:30am.

FEB 4 Sun

SNOWSHOE: LAKE BLANCHE (MOD+) Lady Leslie Woods (484-2338), the Princess of the Mountains to the skiers, is a stomper on the "shoes" when she leads snowshoe tours. Join Leslie on a moderate, fun tour to Lake Blanche in Big Cottonwood Canyon. Meet Leslie at Butler Elementary at 9:00am.

FEB 4 Sun

SOCIAL: HOT & SPICY POTLUCK/BIRTHDAY CELEBRATION You are cordially invited to assist WMC Master Chef Bob Graves with celebrating his birthday and turning away winter's chill by enjoying Bob's favorite kind of food -- HOT & SPICY!! Plan on bringing your favorite flavorful or fiery dish, or a salad or dessert that will cool the palate. Host Craig McCarthy will kick off the festivities at his home, 518 "B" Street from 5:30 - 8:30 p.m. There will be a \$2.00/person cover charge for WMC members (\$4.00 for non-members) to cover utensils, glasses, and fire extinguishers. Call Craig (521-5408) or Felecia (266-9462) for further details.

FEB 7 Wed

WMC BOARD MEETING (MSD+++) As usual, all WMC members are welcome to attend the monthly business meeting of the Governing Board. Call any director to find out the location of the meeting.

FEB. 10, Sat.

SKI TOUR, BEAVER CREEK UINTA'S (NTD) with Constance McKay (268-9288) Meet at the K-Mart parking lot on Parley's way at 9:00 am. This is a good beginners ski tour alongside the Mirror Lake Highway. Bring lunch and a beverage.

FEB. 10. Sat.

SKI TOUR, CARDIFF FORK VIA MILL D SOUTH (MOD+) with Tom 'The Pemman Eater' Walsh. (969-5842) Meet at the Butler Elementary School Parking lot at 2700 East and 7000 South. Tom insists it's the pemman bars that keeps him going all day through powder thick and thin. You'll need a few to keep up with him as there are numerous possibilities to ski on this one. Avalanche beacons (457 khz compatible please) skins and shovels required.

FEB. 10 Sat.

SKI TOUR, LEADERS CHOICE (MSD) with Will McCarvill (943-5520) Call to register and find out where to meet. Avalanche beacons (457 khz compatible please) skins and shovels required.

FEB 10 Sat

SNOWSHOE: DOG LAKE (NTD+) Janet Chatwin (255-3732) will be the leader on the always popular Dog Lake tour for all enthusiastic beginners and experienced snowshoers looking for a fun easy time. Meet Janet at Butler Elementary at 9:30am.

FEB 10 Sat

SNOWSHOE: RED PINE LAKE (MOD) Gretchen Siegler (575-8526) will be the leader on the trail to Red Pine Lake. Since Valentines Day is coming next week, perhaps she's looking for something in red. Meet Gretchen at Butler Elementary at 9:30am.

FEB 10 Sat

SOCIAL: RED SHOES & CHOCOLATE DESSERTS VALENTINE POTLUCK AND DANCE Happy Valentine's Day! Strap on your red shoes, and get ready to celebrate this special holiday with the WMC's second annual "Red Shoes & Chocolate Desserts" Valentine Potluck & Dance, with the site to be announced in the February *Rambler*. The potluck will commence at 6:30 pm with rock 'n roll dancing to commence at 8 pm. The cover charge will be your best pair of red shoes (or a Valentine's costume) and \$5.00/person for WMC members, \$7.00/person for non-members. with extra credit given for chocolate desserts. For more information call Liz Cordova (484-3740), Eileen Gidley (255-4336), or Patti O'Keefe (973-7984).

FEB. 11 Sun.

SKI TOUR, BEAVER CREEK UINTAS (NTD) with Louise Knauer (364-7313) Meet at the K-Mart parking lot on Parley's way at 9:00 am. This is an excellent easy trail just south of the Mirror Lake Highway East of Kamas. Track skis are OK for this one.

FEB. 11 Sun.

SKI TOUR, LEADERS CHOICE (NTD) with Mohammed Abdalla (466-9016) Meet at the K-Mart parking lot on Parley's way at 9:00 am. Not only is Mohammed known for his wonderful disposition and enormous smile, but he also knows where to go skiing! He's just a bit wary about his destination because he wants the good snow! Avalanche beacons (457 khz compatible please) skins and shovels are not required, but if you have them, bring them.

FEB. 11, Sun.

SKI TOUR, POWDER PARK #2 (MOD) with Phil 'Powder man!' Fikken (583-8499H, 569-7331W) Meet at Lot #4 on Ft. Union Blvd. (about 3600 East) at 9:00 am. Follow Phil to this area north of Desolation Lake; This bowl normally has good powder, and we all know that Phil's one of the world's most enthusiastic powder aficionados! Avalanche beacons (457 khz compatible please) skins and shovels required.

FEB 11 Sun

SNOWSHOE: DOG LAKE TRAIL TO MEADOW (NTD-) Leslie Mullins Davis (363-0560) will be leading an easy snowshoe tour to the meadow below Dog Lake. Join Leslie for this leisurely tour at Butler Elementary at 10:00am.

FEB 11 Sun

SNOWSHOE: SILVER FORK (NTD) Christine Allred (261-8183) will lead the first WMC February snowshoe tour up Silver Fork. Join Christine in looking for all that glittering snow at Butler Elementary at 9:30am.

FEB 15 Thu

GENERAL MEMBERSHIP MEETING We will elect the '96-'97 slate of officers and consider important issues which will define the Club's future. The location is not available as we go to press, but watch the January *Rambler* for more details.

FEB 16 to 19 Fri-Mon

MOUNTAIN BIKING: DEATH VALLEY Tired of snow, cold, and mobs of presidents day weekend? Nostalgic about all the great rides you did last summer? Well...have we got a trip for you!!! Average daytime temperature 74°, snow 0%, rain 0%, sunny 99.9%, scenery 110%. Hot Springs 105° for soaking out the tired muscles. It is the biker's paradise in February! We will do day rides from a central camping location at Furnace Creek. This is the second year for this trip and it is fabulous! Registration is limited so sign up early. Cost is about \$60 plus transportation which will be by bus if enough people sign up. There will be a planning meeting on Sunday, Jan. 14, at 7:00 pm at 3886 Holiday Curve, Park City. Call Bob Wright (1-801-649-4194) for more information and to register.

FEB 17 Sat

SNOWSHOE: SILVER FORK (NTD) Janet Friend (268-4102) will be the leader on the tour up Silver Fork. Janet says wear your silver bells and bring your divining rods and perhaps you'll find silver at the mine. Meet Janet at Butler Elementary at 9:00am.

FEB 17 Sat

SNOWSHOE: UINTAS (MOD) Mark Jones (486-5354) indicates that this snowshoe tour will be an off-trail exploration, for experienced snowshoers only, in the Shingle Creek area looking for white fluffy powder. Call Mark for more details or meet him at Skyline High's east parking lot at 9:00am.

FEB 18 Sun

SNOW REMOVAL AT THE LODGE. 2:00 PM. Please call Martin (968-1252 or 942-8902) to confirm before driving up.

FEB 18 Sun

SNOWSHOE: AMERICAN FORK CANYON-MILL CANYON TIBBLE FORK AREA (MOD) Join Russ Pack (572-5653) for another snowshoe tour to a different area. This tour will require waterproof footwear of Sorel height to ford the North Fork creek above Tibble Fork Reservoir (before putting on snowshoes) and several early subsequent crossings of Mill Canyon creek. This will be another tour of 6 to 7 miles and 1500ft of elevation change but with lots of unused snow and solitude. Bring a lunch for the trip up Mill Canyon and the loop around Tibble Fork basin. Changing of footwear should be possible after the creek crossings and we can stash the tall boots and use them on the return to get back across the creek(s). Meet Russ at the 7200So. Park and Ride at 9:00am.

FEB 18 Sun

SNOWSHOE: GREENS BASIN (NTD) Paul Larsen (265-0206) wants to welcome all newcomers for a slow paced tour to the beautiful Greens Basin area. Bring a lunch to relax and enjoy the scenery. Meet Paul at Butler Elementary at 10:00am.

MAR 2 Sat

SOCIAL: SADIE HAWKINS' DAY POTLUCK AND DANCE

Yes, WMC gentlemen, it's the ladies' turn for this one.....with 1996 being the last "Leap Year" until the year 2004, it seemed appropriate for a Sadie Hawkins' Day Dance! Place: Salt Lake County Tenth East Senior Citizen's Center, 237 South 1000 East. Dress code: straight from the country! (i.e.: coveralls, jeans, scarves, cowboy boots, etc.) Time: Potluck at 6:30 p.m., dancing 8:00 p.m. Cover charge: \$5.00 WMC members, \$7.00 non-members. Additional details will be featured in the February *Rambler*.

MAR 3 Sun

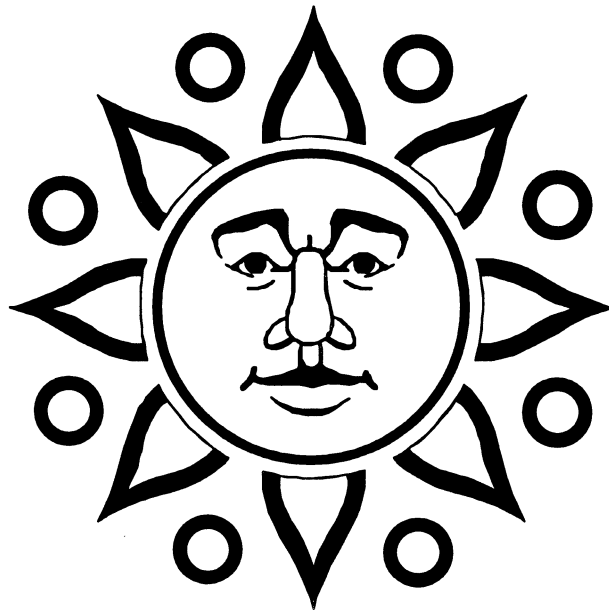
SNOW REMOVAL AT THE LODGE. 2:00 PM. Please call Martin (968-1252 or 942-8902) to confirm before driving up.

MAR 17 Sun

SNOW REMOVAL AT THE LODGE. 2:00 PM. Please call Martin (968-1252 or 942-8902) to confirm before driving up.

MAR 23 Sat

SNOWSHOE: GOURMET SNOWSHOE TOUR- WILLOW LAKE (NTD/FUN) Its getting near the end of the season, time for Mark Jones (486-5354) and Holly Smith (272-5358) to lead a promised gourmet tour to Willow Lake and beyond. More details will follow in subsequent *Ramblers*. Meeting place and time- probably at Butler Elementary at 9:30am.



From the Ski Touring Director

By Brian Barkey.

It's mid December as I'm writing this, and from here it looks like we're having one of those drier years. I guess the El Nino, upper jet stream or some other atmospheric phenomena has decided to send all of our snow back east to the flat lands where folks hate the stuff and have no use for it. But, for a few of us willing to risk our skis and knees, there has been decent skiing in the upper areas of the Cottonwood canyons. It has been crowded back there though, as this is the only place that has skiing yet.

Hopefully, by the time you read this, there will be enough snow for the Avalanche Seminar and Transceiver practice that will be held on the 24th (Wednesday) and 27th (Saturday) of January. It's at the Unitarian Church again (see the ad in this *Rambler* for more information) I always need volunteers to help with the beacon practice. Please call me (394-6047) or Cheryl (649-9008) if you can volunteer.

I'm still getting feedback (That's a polite euphemism for 'Hell') from folks who are still upset about the beacon frequency

change. So, I'll tell folks one more time (sigh....). The WMC is only accepting people with avalanche transceivers which are compatible with the new, European frequency (457 khz) on tours which require them. If you don't have one, you can't come along. We've been telling folks about this since last year. We would hope that you'd be willing to spend the money to perhaps save your life, and perhaps even to save the life of a friend. So please, be compatible.

It seems that now we'll be able to park at the Spruces parking lot after all. Apparently the construction on the bridge has been postponed.

And, the Audrey Kelley ski clinic is on the 7th of January. Harry says that he's got lot's of volunteers to help out. He always welcomes more folks, so call if you'd like to help or if you'd like to come and learn to ski.

I hope that by the time you read this, we won't have to pray for snow. See ya in the hills!

Shopping for a beacon?

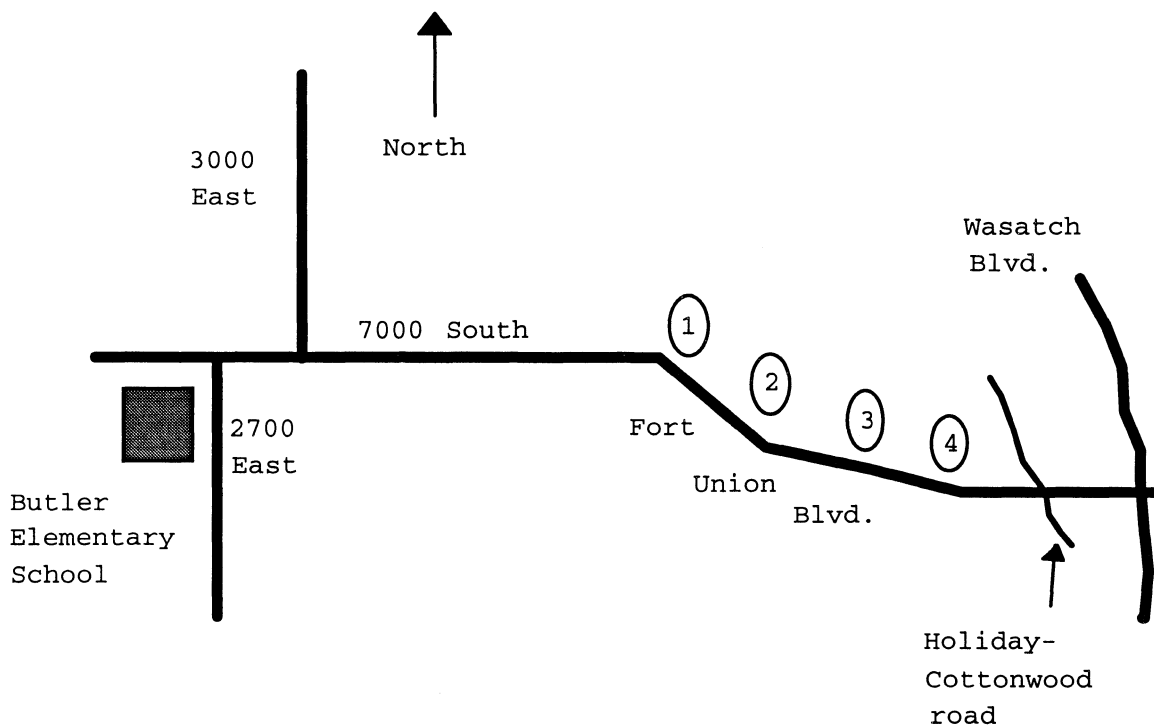
Avalanche transceivers available in the local area.

This is not a complete list, and the prices are good as of December, 14, 1995. This is an aid for those folks purchasing the new European frequency beacons. Only avalanche transceivers compatible with the new frequency are acceptable on WMC tours which require beacons.

Store	Model	New Frequency	Dual Frequency	Price
Alta Sports	Ortovox F1	✓ w/visual & speaker		\$249
Alta Sports	Ortovox F2	✓ w/speaker	✓	\$239
Black Diamond	Pieps Optifinder	✓ w/speaker		\$250
Kirkham's	Ortovox F1	✓ w/visual & speaker		\$255
Kirkham's	Pieps 457	✓ w/speaker		\$220
Kirkham's	Pieps Optifinder	✓ w/speaker		\$250
REI	Ortovox F1	✓ w/visual & speaker		\$255
REI	Ortovox F2	✓ w/speaker	✓	\$245
Wasatch Touring	Pieps 457	✓ w/speaker		\$249
Wasatch Touring	Pieps Optifinder	✓ w/speaker		\$279
Wasatch Touring	Ortovox F1 Plus	✓ w/visual & speaker		\$249
Wasatch Touring	Ortovox F2	✓ w/speaker	✓	\$239
Wild Rose	Pieps Optifinder	✓ w/speaker		\$229
Wild Rose	Pieps 457	✓ w/speaker		\$229
Wild Rose	Ortovox F1	✓ w/visual & speaker		\$229
Wild Rose	Ortovox F2	✓ w/speaker	✓	\$229

If you have a better (i.e. cheaper) source let us know so we can tell everyone else. (Brian 394-6047)

Data compiled by the WMC Ski touring director of retail research services. (Jim Piani)



CAR POOL PARKING LOTS FOR SKIING AND SNOW-SHOEING

Butler Elementary School: Access the parking lot from 2700 East just south of 7000 South. (Fort Union Blvd.) We do not have a guarantee that cars won't be towed from here in the event of snow.

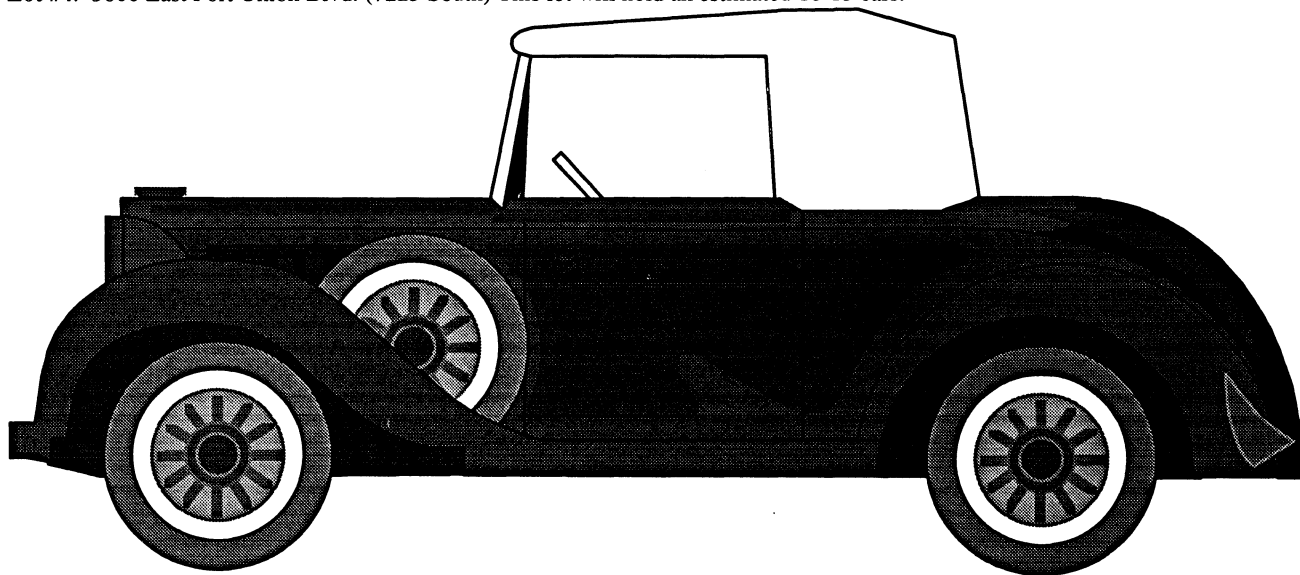
Fort Union County Parking lots: The numbers are for the WMC. Don't expect to see any numbered signs, these are basically wide pull-outs on the north side of Fort Union Blvd. County time restrictions are to be followed, NO PARKING FROM 10 PM TO 8 AM.

Lot #1: 3220 East Fort Union Blvd. (7000 South) This lot will hold an estimated 5 cars.

Lot #2: 3360 East Fort Union Blvd. (7090 South) This lot will hold an estimated 10-15 cars.

Lot #3: 3420 East Fort Union Blvd. (7140 South) This lot will hold an estimated 7 cars.

Lot #4: 3600 East Fort Union Blvd. (7225 South) This lot will hold an estimated 10-15 cars.



From the Lodge Director

by Martin Clemans

This year, 1995, has been a trying one for Lodge and for the Director. As a result of record snows in late winter, the building sustained substantial damage. Not only was one dormer completely crushed, but its companion had severe structural damage which didn't become apparent until late in the summer. It is surprising, and fortunate, that we didn't have to replace both at the same time.

In addition to the damage that needed to be remedied, many other improvements which had been previously scheduled or started had to be addressed. These projects included finishing the storage building, installing drain boxes and pipes at the entrances, replacing structural supports, repairing the porch roof, and replacing the annex support log. Besides these relatively major projects, we cleaned, sanded, sealed, hauled and stacked wood, applied mesh and mortar between the logs, replaced glass, and performed other routine maintenance.

Many of the above-mentioned projects have been started and need to be completed next summer. Those who attended the work parties this year have provided a valuable service to those of you who enjoy the lodge at social activities. While the number of workers who attended was disappointingly small, those who attended provided an extraordinary level of dedication and effort.

I think it appropriate to bring to your attention those who have donated their time and skills to the Lodge. Rich Osborne, in

addition to a staggering load as Conservation Director this year, spent many hours, at work parties and in between, making sure that important items were not overlooked in the rush to complete the repairs in the limited construction season. Bob Myers provided structural drawings, materials lists and professional expertise to the reconstruction of the dormer. Scott Schonrock gave invaluable service on the dormer project. Ken Engstrom provided engineering drawings as well as hours of labor throughout the summer. Frank Bernard and Jim Haun spent many hours framing, and doing structural and finish work that would be envied in Deer Valley (I guess you had to be there). Edith Dickinson, Kyle Williams and his kids, Porter and Kenzie, Jim Frankenfield, Bill Robbins, Bruce Nibley, Kristie Price, Betty Cluff, Camille Pierce, Ursula Jochmann and daughter Josie, Vince DeSimone, Cassie Badowsky, Bill and Linda Ransom, Allan Brennan and his kids, Dale and Shaun, Tom Miller, Bill and Kay Goldberg and others whose names I can't find since my house is in the middle of major overhaul, attended work parties. Many of those people gave up more than one weekend to work on the Lodge.

All of these people merit your thanks and recognition. And one the best ways you can acknowledge their service is to plan to attend work parties next summer so the lodge may continue to be enjoyed by all of us in the Wasatch Mountain Club.

Thinking of Remodeling?



Myers & Mahak
CONSTRUCTION Inc.

Members of "The Wasatch Mountain Club"

485-9209

**FULL SERVICE REMODELING
DESIGN / BUILD
RESIDENTIAL & COMMERCIAL
KITCHENS & BATHROOMS**

Robert Myers 485-9209

Vali Mahak 582-7711

3336 South Pioneer Street • Salt Lake City

From the Boating Director

by Janis Huber

If you have not gotten your permits in or need to write or call for an application, here's the information with (hopefully) some useful tidbits:

Tip 1: For those rivers using the lottery system, applying for Mid-week launches gives you a little better chance. I have included average trip lengths from put-in to takeout so that you may put-in during the week and take-out on the weekend.

Tip 2: Most of the phone numbers are only manned during the morning hours now. **Tip 3:** Main Salmon, Middle Fork Salmon, Hell's Canyon, and Selway, are all the same permit, send for just one of them.

CATARACT CANYON

Canyonlands National Park, 125 West 200 South, Moab, UT 84532, (801)-259-7167

System: FCFS To Agency: After Jan 1 Length of trip: 5 days

Suggested Dates: May or Early September

DESOLATION CANYON

BLM, Price River Resource Area, 900 North 700 East, Price, UT 84501, (801)-636-3600, (801)-637-4591

System: Lottery To Agency: Dec 1- Jan. 30 Length of trip: 5 days

Suggested Dates: May 25 or May 22,23, or June

GRAND CANYON

River Permits Office, Box 129, Grand Canyon, AZ 86023-1029, (520)-638-7843

System: FCFS (Long Wait List) To Agency: Feb First Time/Jan to Renew

Length: 3 Weeks

HELL'S CANYON

Hell's Canyon National Recreation Area, Box 699, Clarkston, WA 99403 (509)-758-1957

System: Lottery To Agency: Dec 1- Jan 31 Length of trip: 4 days

Suggested Dates: Mid August

LODORE AND YAMPA

River Ranger, Dinosaur National Monument, Box 210, Dinosaur, CO 81610, (970)-374-2468

System: Lottery To Agency: Dec 1-Jan 31 Length of trip: 4-5 days

Suggested Dates: Mid May or Early June

SPLIT MOUNTAIN (GREEN) "DAILY"

Same address and phone as Lodore

System: FCFS by phone To Agency: Mar 1 or after Length of trip: 1 day

Suggested Dates: Open

ROGUE

TRI, PO Box 5149, Roseburg, OR 97470, (503)-672-4168, (541)-672-4168

System: Lottery To Agency: Jan 1-Feb 12

Suggested Dates: August or September

MAIN SALMON

North Fork Ranger District, PO Box 180, North Fork, ID 83466, (208)-865-2383

System: Lottery To Agency: Dec 1 - Jan 31 Length of Trip: 5-6 days

Suggested Dates: Late June/ Early July

MIDDLE FORK SALMON

Middle Fork Ranger District, PO Box 750, Challis, ID 83226, (208)-879-5204

System: Lottery To Agency: Dec 1 - Jan 31 Length of Trip: 5-6 days

Suggested Dates: June

SAN JUAN

BLM, San Juan Resource Area, PO Box 7 (435 N. Main), Monticello, UT 84535, (801)-587-2144 (801)-587-2141

System: Lottery To Agency: Dec 1- Jan 31 Length of Trip: 5 days

Suggested Dates: April/May

SELWAY

District Ranger, West Fork Ranger District, 6735 West Fork Road, Darby, MT 59829 (406)-821-3269

System: Lottery To Agency: Dec 1- Jan 31 Length of Trip: 4 days

Suggested Dates: None

WESTWATER CANYON

BLM, Grand Resource Area, 82 East Dogwood, SUITE G, Moab, UT 84532, (801)-259-4421 or (801)-259-8193

System: Lottery To Agency: Dec 1- Jan 31 Length of Trip: 1 or 2 days

Suggested Dates: Any Sat in Sept or Oct. (Full Moon?)

OTHER NOTES: (1)SOME lottery rivers have a "call in for open dates" system after drawing, (2)FCFS is First Come First Served, (3)SASE is Self Addressed, Stamped Envelope.

THE WASATCH MOUNTAIN CLUB

Membership applicants must participate in at least two Club outdoor or service activities. Yearly dues are \$30 single, \$45 couple, \$15 student, \$5 application and reinstatement fee.

GOVERNING BOARD 1995-96

President and Directors

President	273-8010	Nance Allen
Vice President	273-8076	Kyle Williams
Secretary	272-4552	Camille Pierce
Treasurers	486-8525	Kathy Hoenig
	359-1950	Larry Schumer
Membership Dir.	328-9364	Leslie Ann Whited
	266-9462	Felecia Kulsic
Hiking Directors	583-1205	Brad Yates
	262-7152	Kip Yost
Boating Directors	486-2345	Janis Huber
Conservation Dir.	647-0205	Rich Osborne
Entertainment Dir.	262-6698	Sam Kievit
	521-5408	Craig McCarthy
Lodge Directors	968-1252	Martin Clemans
		<vacant>
Mountaineering Dir.	273-8076	Kyle Williams
Publications Dir.	484-8271	Jim Zinanti
	484-8271	Reda Herriott-Zinanti
Winter Sports Dir.	649-9008	Cheryl Soshnik
	394-6047	Brian Barkey
Bicycling Dir.	486-0909	Rick Kirkland
Information Dir.		<vacant>

Trustees

1992-96 term	328-4512	Mike Budig
1993-97 term	942-6065	Karin Caldwell
1994-98 term	484-2338	Leslie Woods
1995-99 term	943-8500	Phyllis Anderson
Emeritus	355-7216	O'Dell Petersen
Emeritus	277-6417	Dale Green

COORDINATORS

(under boating director)		
Canoeing	486-4986	Mark McKenzie
Kayaking	<vacant>	
Sailing	649-6805	Vince DeSimone
Rafting	322-4326	Janet Embry
Boating Equ.	487-7072	Vera Novak
Boating Instr.		<vacant>
(under ski touring director)		
Snowshoeing	572-5653	Russ Pack
(under bicycling director)		
Mountain Biking		<vacant>
(under entertainment director)		
Volleyball	364-4006	Ross Martin
(under information director)		
Adopt-A-Highway	583-9611	Carl Warberg
Webmaster	966-6041	Tony Ackerman
(under publications director)		
Commercial Adv.	484-8271	Reda Herriott-Zinanti
Rambler Mailing	288-1858	Harry Kimbrough
(under lodge director)		
Lodge User Rep	647-0205	Rich Osborne
(under conservation director)		
Trails Issues	364-5729	Chris Biltoft
(wilderness issues coordinators)		
BLM Land	278-5826	John Veranth
S. Rafael Swell	943-5520	Will McCarvill
Kaiparowits Plat.	647-0205	Rich Osborne
Rivers	486-1476	Allan Gavere
West Desert	273-7955	Donn Seeley

Commercial Advertising

The Rambler encourages and supports your products and services through pre-paid commercial advertisements. Advertisements must be camera ready and turned into the advertising director no later than the 15th of the month prior to publication. Prepayment is necessary for single month advertisements with invoicing and net 30 for repeat advertisements. Contact the Commercial Advertising Coordinator for information or to place an ad.

Full Page	\$95.00	7" x 9"
Half Page	\$50.00	7" x 4.5" Horizontal 3.5" x 9" Vertical
Quarter Page	\$30.00	3.5" x 4.5" square 7" x 2.25" horizontal 2.25" x 9" vertical
Business Card	\$15.00	3.5" x 2"

WMC Financial Report Comparison of 1993 and 1994 Totals

ASSETS

Current Assets	12/31/93	12/31/94
Cash-checking	12,229	2,426
Cash - money market acct.	102,582	110,491
Certificates of deposit	53,472	51,475
Prepaid income tax	1,028	500
Book Inventory	2,245.	5,709
Property		
Lodge in Brighton	57,484	57,484
Total Assets	229,040.	228,085.

Liabilities and Fund Balances

Liabilities	229,040	228,085
Total Liabilities and Fund bal.	229,040	228,085



Come one, Come All
to the WMC

BACCHANALIAN BANQUET & BALL

(a.k.a. the WMC Annual Nominations and Awards Banquet)

Saturday, January 20, 1996

6:00 pm to midnight

Olympus Hotel Conference Center

161 West 600 South

Salt Lake City



Dining



Recognition Awards



Dancing to the Music DJ Don Woodbury

YOU

(all WMC members) are welcome and encouraged to attend this annual celebration which recognizes those WMC members that have made significant contributions to the Club in 1995. Enjoy an evening of dining and dancing with your WMC friends.

Semi-formal attire is requested.

Your non-WMC guests are welcome to attend.

Cost is \$19.00/person in advance and \$29.00 at the door.

Advance registration: please clip and mail the coupon below with payment by January 15, 1996 Mail to

Sam Kievit
WMC Entertainment Director
5693 S. Whispering Pine
Murray, UT 84107

Make checks payable to the Wasatch Mountain Club.

Note that a fee of 5.00 will be assessed for late registration (total \$24/person) and that the cost at the door is \$29/person.

Registration for WMC 1996 Awards Banquet

Name: _____ Number in Party: _____

Name(s) of Guest(s): _____

Entree Preference: Vegetarian or non-vegetarian: _____

SAVE OUR CANYONS

Dear Friend:

We are writing to urge you to become a member of Citizens' Committee to Save Our Canyons. It's simple -- just tell us that you wish to join. If you can contribute, either financially or with your time, so much the better, but no specific commitment is required. The main reason to join is so that you can keep informed of developments in the canyons and learn what you can do to help in specific cases.

Any financial contributions (which are tax deductible) are welcome. A large sum will, of course, allow us to do more. But even a more modest contribution -- \$5, \$10 or \$25 -- will help greatly with the costs of postage and printing for notices and newsletters.

We also want to invite you to the 1996 membership meeting. At this meeting, we will briefly describe the mission of Save Our Canyons, view a short slide show that illustrates what we are trying to save, and then discuss what should be done on one or more action items in which we're currently involved -- support for open lands, Snowbird's plans for a three story restaurant on Hidden Peak, and Rep. Hansen's ski-resort mountain buying bill, for example. We will also elect board members. The meeting will be held:

January 31, 1996
REI, 3285 E. 3300 S.
7:00 - 8:45 p.m.

Please fill out the membership form below and come to the meeting on January 31st.

Yes, I want to join SAVE OUR CANYONS		I would like to help by:
<hr/>		<input type="checkbox"/> Assisting with mailings
Name <hr/>		<input type="checkbox"/> Letter writing
Address <hr/>		<input type="checkbox"/> Researching
City <hr/>		<input type="checkbox"/> Organizing
State <hr/>	Zip Code <hr/>	<input type="checkbox"/> Contributing. Enclosed find my tax-deductible contribution in the amount of \$ <hr/>
Telephone <hr/>		
E-Mail Address <hr/>		
MAIL TO: SAVE OUR CANYONS, P.O. BOX 58671, SALT LAKE CITY, UTAH 84158-0671		

Citizens' Committee to Save Our Canyons
P.O. Box 55671, Salt Lake City, Utah 84158-0671
January 1996

COMING ATTRACTIONS

COMING ATTRACTIONS

January and February 1996 YURT SKIING Due to popular demand we have reserved five weekends in the premier mountain yurts of this area. We have steep and deep in the La Sals and rolling intermediate hills north of Logan. The usual deal is to backpack (ski-pack) your food and gear into the yurt, ski the weekend, and pack out. The yurts have coleman stoves and furniture. Some offer other amenities. Talk to anyone who has yurted before - its a blast. Last year the yurt trips filled up quickly, so make your plans fast. Due to drop outage, there will probably be space available. Call the yurtmeister, Tom Walsh, after 7:00 pm at 969-5842 to sign up for the trip of your choice. When the trips are signed up, a leader will be designated.

January 5-6: BUNCH GRASS YURT north of Logan has long wide powder bowls minutes from the front door. It sits at 8400' beside an aspen forest. Pack in on Friday, stay overnight Friday and Saturday, and pack out on Sunday afternoon. Capacity is 6 people. Cost is estimated at \$48.00. PS We got a full moon for this one.

January 20-21: BALDY KNOLL YURT east of Driggs, Idaho in the Tetons has intermediate bowls and hills with nearby access to steeper and more adventurous terrain. Pack in on Saturday, stay Saturday and Sunday nights, and pack out Monday afternoon. Capacity is 8 people. Cost is estimated at about \$40.00.

February 2-3 TOMASAKI CABIN IN THE LA SALS Steep and Deep! With good snow the runs are long and fast, with 2000' vertical exposure just outside the door. Pack in on Friday, stay Friday and Saturday nights and depart Sunday afternoon. Capacity is 10 people. Cost is undefined at press time but is reasonable.

February 16-19 DEATH VALLEY MOUNTAIN BIKE TRIP Tired of snow, cold, and mobs of presidents day weekend? Nostalgic about all the great rides you did last summer? Well...have we got a trip for you!!! Average daytime temperature 74°, snow 0%, rain 0%, sunny 99.9%, scenery 110%. Hot Springs 105° for soaking out the tired muscles. It is the biker's paradise in February! We will do day rides from a central camping location at Furnace Creek. This is the second year for this trip and it is fabulous! Registration is limited so sign up early. Cost is about \$60 plus transportation which will be by bus if enough people sign up. There will be a planning meeting on Sunday, Jan. 14, at 7:00 pm at 3886 Holiday Curve, Park City. Call Bob Wright (1-801-649-4194) for more information and to register.

February 17-19 STEAM MILL YURT north of Logan has a 3.5 mile trip in with an altitude gain of 1500 feet. It is located at 8100' and has plenty of intermediate skiing. Pack in on Saturday, stay overnight Saturday, Sunday, and Monday nights and depart around noon Tuesday. This is a three day trip on the President's day holiday. Capacity is 6 people. Cost is about \$70.00.

MID-WINTER: Ski Touring BRYCE CANYON (Ruby's Inn) You have seen it in all the calendars-the panorama of Red Orange Hoodoos laced with SNOW. The scene usually has a skier looking down onto the fantastic Bryce Canyon formations. That skier could be YOU. Plans are now being made for a weekend trip to Ruby's Inn to tour the gently rolling Bryce Canyon Rim. There are currently no reservations nor a fixed date. We could go

on the week ending January 13 or 20. Also the week ending February 3 is available. Rooms with two Queen Sized bed are \$45.00. Think about kicking and gliding on smooth NTD Trails. Think about relaxing in the HOT TUB after a day of touring the rim. Think about calling Tom Walsh to sign up and get more information (969-5842 after 6:00 PM)

Feb-late Feb SNOWSHOE: UINTAS-SHINGLE CREEK AREA (MOD) Cheryl Soshnik (1-649-9008) will be leading a snowshoe tour in the Uintas. Meeting place and time-probably Kimball Junction Kmart at 9:30am. More details in the February Rambler.

MAR 2 or 3 SNOWSHOE: AMERICAN FORK CANYON-PINE HOLLOW TIBBLE FORK LOOP (MOD) This anticipated snowshoe tour will utilize a portion of the Great Western Trail and will require spotting vehicles. More info to follow.

April 3 & 4 1996 Grand Canyon Phantom Ranch

Event is limited to 16 participants. Cost for 6 meals and 2 nights stay at the ranch is approximately \$150.00. Lodging and food on the south rim are additional costs. Lodging accommodations on the south rim for April 2 & 5 will be arranged. (These costs are in addition to those for Phantom Ranch). The slots are filling fast! To secure your slot, payment of the \$150.00 must be made to the trip coordinator no later than January 27, 1996. For more information call Linda Kosky at 943-1871.

April 14-21, 1996 WMC BAJA HA! HA! SAILING TRIP The sea of Cortez between Cabo San Lucas and La Paz is the cruising area for a fun-filled trip next spring. Avoid the UTAH MUD season and chase away the WINTER BLUES in MEXICO, sailing scuba, snorkeling, whale watching, beaches, and visiting interesting shore-side places and towns. No sailing experience is necessary. Those wishing to learn more about sailing will have plenty of opportunity. The trip is expected to cost \$1000 or so which includes air and ground transportation, boat costs, food on-board, hotel, etc. Three BOATS have been reserved. To reserve your space, send a non-refundable deposit of \$25.00 to Vince DeSimone PO Box 680111, Park City, UT 84068-0111, or CALL 1-801-649-6805 for details.

June 1996 MOUNTAINEERING: DENALI ALASKA Response was fabulous - Trip is full. 485-9623

September or October, 1996 Grand Canyon Rim to Rim

This is a "maybe"; depending on availability of accommodations and interest. The thought is for a North rim to South rim hike, with a one or two night stay at Phantom Ranch. Transportation considerations would be a shuttle service for pick-up at the South rim or charter of a bus for drop-off at the North rim and pick-up at the South rim. Participation would be limited to 9-16 individuals. Cost would be a minimum of \$150.00. If you would definitely be a participate, if the trip can be arranged, call Linda Kosky at 943-1871.

WMC BOARD OPENINGS

by Nance Allen

The Governing board consists of a set of directors and four trustees; all volunteers who serve for a twelve month period. This is a **working** board, not just a policy setting body and we have a **good time**. Maybe this is the year for you to see how the Club works and to help set the Club's direction. Give it some thought won't you? In general, a director's responsibilities include: responsibility for a respective area, forming a working committee, being a conduit for information to the Board and back to the membership, timely submissions of events and activities to the *Rambler* editor(s), keeping a current inventory list, and attending all Board meetings regardless of the season of the respective activity. Below is a brief outline of the duties of the open positions on the Board.

President Must have been a WMC member in good standing for at least five years and have previously served on the Board for at least one year. The president presides at all Board and General meetings; in conjunction with the Board sets the annual calendar; holds an annual retreat; and is responsible for the Leaders Party.

Treasurer Receives and disburses all funds under the direction of the Board; prepares and makes deposits and writes all checks, at least twice a month; prepares and presents monthly financial statements to the Board; balances the checking account; transfers and tracks funds; and keeps records for the annual financial review. Must be computer literate and able to learn/use bookkeeping software.

Conservation Director Forms and serves as chair of the conservation committee; and trails coordinator reports to this position.

Mountaineering Director is responsible for planning the annual climbing schedule, climbing instruction, safety, and all WMC mountaineering equipment.

Boating Director is responsible for the annual boating schedule, safety, obtaining necessary permits, and obtaining and maintaining boating equipment. Six coordinators: canoeing, kayaking, sailing, rafting, boating equipment, and boating instruction report to this director; has a budget; and works with a committee.

Entertainment Director is responsible for arranging all entertainment and social programs in addition to securing facilities for membership meetings works with a committee; and has a budget.

Lodge Director is responsible for maintenance and Lodge work parties; the Lodge user rep. reports to this position; has a budget; The Club must secure culinary water and connect to the water and sewer system in 1996.

Membership Director keeps an accurate list of members, oversees membership activities for renewal and attracting new members; verifies applications and presents to the Board for approval; works with a committee; coordinates efforts with the information director; and needs to be computer literate and maintain the membership data base.

Information Director is responsible for promoting the Club and its activities; attracting new members and enhancing the Club's image; and coordinates efforts with the membership director.

Publications Director is responsible for publishing and mailing *The Rambler*; this monthly publication is the Club's official record; two coordinators report to this position; *The Rambler* is produced on a PC by the director and printed by a professional printer; and has a budget.

Bicycling Director is responsible for planning the annual schedule and maintaining cycling safety; mountain biking and in-line skating coordinators report to this position; and works with a committee.

Historian is responsible for maintaining historical files of WMC documents, including *The Rambler*, meeting minutes, and other memoranda and correspondence; writes a monthly column for *The Rambler* about past WMC activities.

Editors Note: All directors should be computer literate, especially the Treasurer, Membership Director, and Publications Directors. The WMC owns a Macintosh computer, with Filemaker Pro database software (for membership records), Microsoft Word and Pagemaker (for writing and *Rambler* work.) and a PC (80486, 66 Mhz, 16 MB) with Microsoft Word 6.0, Wordperfect 6.0, a Fax modem, laser printer, and other hardware and software which is available for director usage such as preparing *Rambler* submissions, writing memos, doing membership activities, treasury activities, and preparing *The Rambler*.

Wasatch Mountain Club Governing Board Positions 1996-1997 Nominations

President	Linda Kosky
Secretary	Camille Pierce (incumbent)
Treasurer	Bob Janzen
Membership	Kyle Williams
Hiking	Brad Yates (incumbent)
Boating	Carol Milliken
Conservation	Will McCarvill
Entertainment	Lori Ball
	Patti O'Keefe
Lodge	Gary Myers
	Scott Schonrock
Mountaineering	Sam Albano

Publications	Vacant
Ski Touring	Brian Barkey (incumbent)
Bicycling	Rick Kirkland
	Doug Murray
Information	John Schavers
Trustee	John Veranth (4 yr. term)
If you or anyone you know is qualified and would like to run for any board position, please contact one of the nominations committee members, or call the incumbent to find out about the position.	
Mary Ann Losee (chair)	537-1929
Jerry Hatch	583-8047
Linda Kosky	943-1871



Utah Wilderness Association

455 East 400 South #205 / Salt Lake City, Utah 84111 / (801)359-1337

ANNOUNCING THE ELEVENTH ANNUAL UTAH WILDERNESS ASSOCIATION WILDERNESS POETRY COMPETITION!

PRIZE: \$100.00 AND PUBLICATION IN UWA REVIEW

We are thrilled to offer this exciting opportunity for regional poets to share their "wild words" with our readers (and many more folks who request the special spring edition of the *Review* in which the winners' poems are published.) With the high quality and number of entrants we receive annually, this year's competition promises to be better than ever. Please feel free to clip this box and pass it on to someone you think may be interested in entering a contest of this theme, size and monetary reward! Dig through your journals, pack and pockets for those dusty scribbles and send them in. It is a pleasure to read of your love of the wild. Good luck!

CONTEST DEADLINE: FEBRUARY 15, 1996

- Poems must be unpublished
- Poems should relate to the theme of wilderness, its preservation, its life and values, its spiritual nature, or any of these themes
- Poems must not exceed 40 lines and may be in any style
- No more than three poems may be entered by the poet
- Submit a \$3.00 entry fee with each poem
- Poets retain ownership of their work

Submit two copies of each poem: the first must have your name, address and phone number in the top right corner; the second copy must contain the poem only (in order to guarantee anonymity in judging.)

For a copy of guidelines and/or notification of winners, send an SASE to:

POETRY
c/o Utah Wilderness Association
455 East 400 South #205
Salt Lake City, Utah 84111



TRIP TALKS

Westwater Canyon

Oct. 7-8, 1995

By Janis Huber

I'm always amazed at the beauty of Westwater Canyon. It really does have character. It starts with a leisurely float for the first few miles as the red rock closes in the canyon. Then the black rock closes in around you, signaling the big rapids are just around the corner. After the rapids, the canyon again assumes a friendly, red colored posture as the river slows. I enjoy the overnight trips because the pace is slower, and there's more opportunity to get to know the other members of the group.

The first weekend in October could be really good or bad...luck was on our side because Mr. Winter wasn't quite ready to make an entrance. But we were reminded that he soon would be there when we awoke Saturday morning to frost on our tents.

But the desert does warm quickly, and by 10:00 we were all shedding clothes.

Unfortunately, there was a small mishap, so the other two kayakers and myself (also in a kayak) put on the river much later. I was then unable to take pictures of the rafts running skull rapid. I understand they all had a good day. Rich Gregersen was the most playful of the three kayakers, and he got his money's worth in surfs for the day. The camp was below the rapids, and it was almost dusk when I arrived. There, standing on the rocks, were this classy group of people toasting me as I made my entrance, tired, and hungry. Could this be the right place? Indeed it was. The

chef (Zig), and Vera, dressed in formal attire, set the mood for the evening. And what an evening. After a classy (and delicious) meal, Linda Kosky showed us some Western Dance steps. As we settled into our chairs, Frank Bernard got out his guitar, and we all sang along. Keep this in mind, however, the fires in the fire pan aren't quite enough to read sheet music. We still managed to read the words, and sang most of the songs that Frank had on paper before retiring.

The ride home turned out to be very exciting. The van was starting the climb to Soldier's Summit just past Helper, when a deer tried to jump over the van. Needless to say it was unsuccessful, but it did manage to do some damage. During all the loading and unloading that followed, Julie Gregersen had to be driven back to Price for glass in her eye. Gene Jarvis, who was following helped us shuffle people and his vehicle went to Price as the van's window was repaired with cardboard and duct tape. Actually, we were all pretty lucky, except for Zig who had to deal with the van repairs (it was his van). We arrived home safely, unpacked and said our good-byes. I truly like Westwater Canyon, even in October. Participants include: Zig Sondelski, Gene and Nancy Jarvis, Linda Kosky, Aline (sorry about the lost last name), Frank Bernard, Janet Embry, Rich and Julie Gregersen, Ziggy and Donna Altinger, George Yurich, Tony Ackerman, our trip leader Vera Novak, and the writer, Janis Huber.



Yellowstone Backpack

by Mike Roundy
Sept. 9-16

I first hiked the Yellowstone backcountry in early Fall, early 1980's, with Sam Allen and was impressed with the easy going and absence of other human travelers. So I signed on with Mike Budig twice in the last three years for some really memorable times.

This year's trek began at the Lamar River trailhead where our silver tongued leader managed to talk three hikers into driving our two cars back to Artist Point and saving us hours of time. Their compensation was some hot tips on places to hike in the Yellowstone.

Mike had not been able to get the first campsite he wanted, having to settle for one nearer the trailhead, but lo, only three miles in and almost at our campsite, we met some weary flatlanders who were willing to trade us the more distant site we desired for the close one we had.

The second day, we continued up the Lamar to the confluence of Mist Creek where we had our only bad weather of the trip – a little rain in the evening. We laid over for a day and did our little day hiking, fishing, do nothing sort of things. We caught some nice cutthroats for breakfast.

The next camp was a lovely spot just short of Mist Creek Pass on a giant meadow with elk bugling in the forest fringes all night. About this time Ken "Name that Hiker" Workman began hanging monikers on us according to what impressed him as we progressed along. We sort of pushed Sue Barney out ahead as she's a pretty fast hiker anyway to kick loose some bear. So she became "Bear Bait Barney." Ilene seemed to have an unending supply of goodies in her pack, pockets, and up her sleeves. She was happy to share these will all and thus became "Happy Hour Gidley."

We had a long day of about 13 miles through bear country in the Pelican Creek/Broad Creek drainages where "Bear Bait Barney" came in real handy. We found ourselves stumbling in confusion several times due to poor trail signs. But here "Hawkeye Budig" got us straightened out and headed in the right direction again – sort of.



We laid over at Broad Creek where we heard wolves each night and hiked or hung around enjoying frosty nights and great days. "Name that Hiker" Workman and I found our way to a really large thermal area – lots of tracks, including wolf and bear, in the thermal mud. "Chianti Piani" acquired his name here at Broad Creek although he didn't have an ounce of Chianti along and he seemed to prefer "Nitro Fix" which seemed more fitting.

On our way out to our last camp by Artist Point this writer mistook some really yummy mushrooms for what I thought were edible puffballs. Fortunately we were only a half hour from campsite. I managed to get my tent set up and commenced on a 12 hour trip to hell with muscle twitching, double vision, disorientation and stumbling, and "Happy Hour" says I was purple. Thus my name became "Toadstool Mike."

An easy hike out and we were mingling with tourists hoping the boys had actually left our cars around somewhere. September is a great time for the Yellowstone and I look forward to another adventure with "Hawkeye."



Great Salt Lake Issues Symposium

Friends of Great Salt Lake has organized a symposium to educate the public and encourage dialogue about the future of the Great Salt Lake ecosystem and its resources. Speakers will provide background information, discuss parameters which gauge ecosystem health, and review current planning efforts and pertinent policies. Speakers include scientists, policy experts, and naturalists from academia, state and federal agencies, and national conservation groups. Luncheon included. This symposium is made possible, in part, by generous grants from the Utah Wetlands Foundation, Patagonia Inc., and the Nature Conservancy.

When: 9 am to 5:30 pm on Saturday, February 10, 1996
Where: Quality Inn, 154 W. 600 S., Salt Lake City, UT
Cost: \$20 before Feb. 5, \$25 after Feb. 5. Advance registration is strongly encouraged.
Questions? Call Joel Peterson at 485-2394 or Howard Gross at 486-4565.

Registration Form: Great Salt Lake Issues Symposium

Name _____ Address _____
City _____ State _____ Zip _____ Phone _____

\$20 before Feb. 6, 1995; \$25 after Feb. 6. Please make checks payable to **Friends of Great Salt Lake**. Mail to: Friends of Great Salt Lake, PO Box 2655, Salt Lake City, UT 84110-2655

Confirmed speakers and topics:

Brad Barber, Utah Governor's Office of Management and Budget

· *Demographic/population trends and predictions for Wasatch Front/Great Salt Lake periphery*

Don Currey, University of Utah Dept. Of Geography

· *Why the Great Salt Lake is there: a structural geology perspective*

Doyle Stephens, U.S. Geological Survey

· *Water Quality Trends and Concerns for the Great Salt Lake*

Wayne Wurtsbaugh, Utah State University Dept. Of Fisheries and Wildlife

· *Sensitivity of the Great Salt Lake Food Web to Changes in Salinity: A Case Study*

Ella Sorenson, National Audubon Society

· *Birds of the Great Salt Lake*

Tom Wharton, the Salt Lake Tribune

· Luncheon speaker

Wayne Martinson, National Audubon Society

· *Planning Initiatives for the Great Salt Lake Ecosystem*

Mike Schwinn, U.S. Army Corps of Engineers

· *Great Salt Lake Jurisdictional Wetlands and the Clean Water Act*

Robert Adler, University of Utah College of Law

· *Watershed Planning: Potential Applications for the Great Salt Lake*

J. Wallace Gwynn, Utah Geological Survey

· *Great Salt Lake's Mineral Resources: Economic and Sustainability Issues*

Al Trout, U.S. Fish and Wildlife Service

· *Ecosystem Planning for the Bear River Migratory Bird Refuge*

Genevieve Atwood

· *Planning to Live With the Great Salt Lake*

WHAT AVALANCHE???
I DIDN'T SEE IT COMING. NEXT TIME I'LL KNOW BETTER...

The Robert Frohboes
**AVALANCHE AWARENESS AND SAFETY SEMINAR
AND AVALANCHE BEACON PRACTICE**

Is Just Around the Corner

Lecture: Wednesday, January 24, 1996 7:30 PM
First Unitarian Church
6th South 13th East
\$5.00 donation requested

Practice: Saturday, January 27, 1996 12:00 Noon
Butler Elementary School to carpool up
Big Cottonwood Canyon

Contact Ski Director **Brian Barkey** (394-6047) for
Information or to help with the Beacon Practice

*Presented by the Utah Avalanche Forecast Center
for the
Wasatch Mountain Club*

AUDREY KELLY BEGINNERS CROSS COUNTRY SKI CLINIC

Sunday, January 7, 1995
9 am - Noon Instruction; Short Tour in Afternoon

Uinta Mountains, along the Beaver Creek Trail (Mirror Lake Highway)

Hot Lunch will be provided. A \$5.00 fee will be charged to cover lunch costs

Harry Kimbrough (288-2858) Has Information on the Meeting
Time and Place, and will discuss clothing, what to expect, etc.
with you prior to the day's activities.

REGISTRATION is Required so we know how many Instructors are Needed. Interested in Instructing? Call Harry.

Here's how to order

"Winning The Avalanche Game"

VHS videotape

Please fill out this form and *mail* to:



Wasatch Interpretive Association
P.O. Box 526246
Salt Lake City, UT 84152-6246

or *fax* your credit card order to the:
Utah Avalanche Forecast Center
(801) 524-4030

Your purchase helps fund avalanche safety information and services.

Ordered by: _____

Shipping Address: _____

City: _____ State: _____ Zip: _____

Daytime Phone: _____ Home Phone: _____

Payment enclosed:

_____ Money Order (Payable to Wasatch Interpretive Association)

_____ Check (Payable to Wasatch Interpretive Association) Orders paid by check may be delayed for clearance.

Charge my: _____ Visa _____ Mastercard

Account Number _____

Expiration Date: _____

Your Signature: (required) _____

Note: Credit card order cannot be processed without signature.

Quantity _____ \$19.95 each in United States	Quantity _____ \$25.00 each in Canada
<div>Add Shipping and Handling charge: <div>Priority mail in U.S. + \$5.00 per video . \$3.00 per additional video</div></div>	<div><div>First Class air mail Canada + \$10.00 per video \$ 4.00 per additional video</div></div>
TOTAL \$ _____	TOTAL \$ _____

POLITICAL ALERT

H.B.#1996FL-0085/008 Limitations on Liability for Certain Outdoor Recreational Activities

Dear Friends,

The Wasatch Mountain Club is supporting a bill in the upcoming Utah state legislature that is intended to give protection to **non-profit, volunteer** organizations that sponsor **wilderness activities** which carry an inherent risk to the participant. We have taken the lead to produce the wording of the legislation and coordinate the introduction of the bill in the 1996 session. (The text of the bill follows this article.)

Our beloved club is at RISK! Our society has developed into one where people don't want to take responsibility for themselves and are looking for a deep-pocketed scape goat-goat for what ever may go wrong in their life, and that could be us!

Our club sponsors outdoor wilderness activities that carry an inherent risk to the participants, and it is probable that at some time in the future, we will find ourselves the defendant of a lawsuit. No matter how careful we are, wilderness activities such as hiking, camping, river rafting, biking, canoeing, skiing, climbing, all involve an inherent risk that cannot be completely controlled. If an accident happens, a victim with a good lawyer will try to make it appear as if it was our fault, and go after any assets our group holds. A recent case in Colorado was awarded to a hiker who disregarded the club leaders instructions, strayed from the group, and suffered minor frostbite. She had signed a liability release form, and still successfully sued the club for about a quarter million dollars!

Sincerely,



11-10-95

An Act Relating to the Judicial Code: Providing for Limitations on Liability for Outdoor Recreational Activities Sponsored by Volunteer, Nonprofit Entities: Providing Definitions: Providing Liability Limitations: and providing Exemptions to Liability Limitations.

78-27-101 Definitions, as used in this Chapter.

(1)"Inherent risks of outdoor recreational activity" means those dangers or conditions which are an integral part of outdoor recreational activities including but not limited to: the hazards of traveling in remote areas without medical care or services; the forces of nature including but not limited to variations in weather, terrain, water, snow, rock, or ice conditions; variations in routes or route conditions; drowning; the forces of gravity resulting in falls and subsequent impacts, as well as the impact of falling debris or equipment; the actions of other persons which affect the safety of a participant; equipment failure; and a per-

We feel that this new bill will help protect all of us from these kinds of lawsuits. We need your HELP! We have found on other projects that a broad base of grass-root support is essential for success. We are asking that each of you contact your state representative and ask them to vote for H.B. (see above). If you are not sure how or who to contact, you can call 486-3427 to find out. Usually a letter to the representative is best, but if a phone call is all that your schedule allows, that's still great!. We need the people to be heard. Let the lawmakers and judges know that we all need this type of protection in order to continue providing volunteer service to our community

If you are a part of some other group (outing club, church, kids in Scouts, etc.) that would benefit from this bill, please bring this to their attention and ask them to get everyone to contact their representatives.

Also, if you know of a state representative that would be willing to co-sponsor this bill, please let us know. The more co-sponsors we have, the better.

This is a very important issue, and we hope you can contact your representatives as soon as possible, and make your wishes known. The legislative session starts next week, so time is of the essence. Don't lay this aside! PLEASE DO IT NOW!!

Kyle Williams (Eve:273-8076/Day272-8623)

son's failure to engage in the outdoor recreational activity within the person's own ability.

(2) "Injury" means any personal injury, death, or property damage or loss

(3) "Outdoor recreational activity" means any activity normally participated in an outdoor setting including but not limited to hiking, climbing, skiing, camping, river running, snowshoeing, snowboarding, bicycling, canoeing, which carry an inherent risk.

(4) "Outdoor recreational activity sponsor" means an individual, group, club, partnership or corporation, or any officer, director, leader, or member of such organizations, which operates on a volunteer or nonprofit basis, to organize or sponsor outdoor recreational activities for the benefit of the participants, without the purpose of making a profit.

(5)"Participant" means any person who directly engages in an outdoor recreational activity, but does not include spectators.

78-27-102 Outdoor recreational activity liability limitations.

An outdoor recreational activity sponsor is not liable for an injury to or the death of a participant engaged in the outdoor recreational activity unless the sponsor: (1) Intentionally injures or causes the injury to the participant; or (2) Commits an act or omission that constitutes gross negligence, or willful or wanton disregard for the safety of the participant.

78-27-103 Inherent risks of outdoor recreational activity-- Bar against claim or recovery from sponsor for injury from risks inherent with the activity. Notwithstanding Sections 78-27-27 through 78-27-43 to the contrary, a participant may not make a claim against, or recover from, any outdoor recreational activity sponsor for injury resulting from the inherent risk of the outdoor recreational activity except as provided in Subsections 78-27-102 (1) and (2).

Please Complete Both Sides

Wasatch Mountain Club

New Member/Reinstatement of Previous Members Application

Do Not Use this Form for Regular Annual Membership Renewal

Please read carefully and fill out completely.

Name(s) _____
(First) (Last)

Address _____ City _____ State _____ Zip _____

Check phone number ☐ Residence: _____ Other ☐ Do not print my name/phone in membership list.
to print in Rambler Options: ☐ Do not list my name in lists given to Board
membership list: ☐ Work: _____ approved conservation/wilderness organizations.
e-mail: _____

I am applying for:

Check one:

____ New Membership
(Please complete activity section.)
____ Reinstatement

____ Single Birth date(s) _____
____ Couple _____
____ Student (30 years or younger)

Remit: \$35.00 for single membership (\$30.00 dues, plus \$5.00 application fee)
\$50.00 for couple membership (\$45.00 dues, plus \$5.00 application fee)
\$20.00 for student membership (\$15.00 dues, plus \$5.00 application fee)

Enclosed is \$ _____ for one year's dues and application fee. Checks/money orders only. Make checks payable to **Wasatch Mountain Club**. Do you wish to receive the Rambler (the Club publication)? ☐ Yes ☐ No
(Subscription price is NOT deductible from the dues.)

Activity Section

You must complete two Club activities (other than socials) to be considered for membership. The activity dates must have been within one year of the application.

<u>Qualifying Activity</u>	<u>Date</u>	<u>Signature of Recommending Leader</u>
1. _____	_____	_____
2. _____	_____	_____

I found out about the WMC from _____

Mail application and check to: Membership Director
Wasatch Mountain Club
888 South 200 East, Suite 207
Salt Lake City, UT 84111-4220

Leave Blank—For Office Use Only

Receipt/Check # _____ Amount Received\$ _____ Date Received _____ By _____

Board approval date _____

WASATCH MOUNTAIN CLUB (WMC)

Applicant Agreement, Acknowledgment of Risk, and Release from Liability

VOLUNTARY PARTICIPATION: I acknowledge that my participation in any WMC activity is voluntary. No one is forcing me to participate.

ASSUMPTION OF RISK: I am aware that WMC activities involve risks, and could result in injury, illness, death, and damage or loss of property. These dangers include but are not limited to: the hazards of traveling in remote areas without medical services or care, the forces of nature, the inherent dangers involved in participation in sports, wilderness travel, and social activities, and the negligent actions of other persons or agencies. I understand that all activities should be considered "exploratory", with the possibility of unexpected conditions and route variations. The WMC is not, nor does it provide, a professional guiding service. In order to partake in the enjoyment and excitement of WMC activities, I am willing to accept the risk and uncertainty involved as being an integral part of the activity. I acknowledge this risk, and assume full responsibility for any and all risks of injury, illness, death, or damage and loss to my property.

I verify this statement by placing my initials here: _____

PREPARATION: I understand that it is my responsibility to evaluate the difficulty of any activity I participate in, and decide whether I am prepared by having the experience, skill, knowledge, equipment, and the physical and emotional stamina to safely participate.

RELEASE OF LIABILITY AND PROMISE NOT TO SUE: I agree that I, my heirs, and personal or legal representatives hereby do release and hold harmless from all liability, and promise not to bring any suit or claim against, the Wasatch Mountain Club, its leaders, directors, agents or representatives for any injury, illness, death, or damage and loss to property resulting from my participation in any WMC activity even if they negligently caused the injury or damage.

LEGAL FEES: Should it become necessary for WMC, or someone on their behalf, to incur attorney's fees and costs to enforce this agreement, I agree to pay WMC reasonable costs and fees thereby expended, or for which liability is incurred.

INSURANCE: I certify that I have sufficient insurance to cover any bodily injury or property damage that I may incur while participating in any WMC activity. If I have no such insurance, I certify that I am capable of paying for all such expenses and liabilities.

My signature below indicates that I have read this entire document, understand it completely, understand that it affects my legal rights, and agree to be bound by its terms. I am at least 18 years old.

Signature_____ Print name_____

Address_____

Phone_____ Date_____

WITNESS: I certify that_____ has alleged to me that he\she has read and understands this document.

Witness signature_____ Print name_____

Address_____

Phone_____ Date_____

ACTIVITY SURVEY

WOULD YOU LIKE TO LEAD?

All of the Club's activity leaders are volunteers. You can be a leader too—just check off the activities you want to lead, and we'll give you a call. Help your Club and have fun too!

- Hiking:** ☐ easy day hike ☐ moderate day hike ☐ advanced day hike ☐ car camp
 ☐ backback
- Boating:** ☐ trip leader ☐ instruction ☐ equipment ☐ sailing
- Skiing:** ☐ NTD tour ☐ MOD tour ☐ MSD tour ☐ out of town trip
- Climbing:** ☐ Wasatch climb ☐ out of town trip ☐ winter mountaineering
- Bicycling:** ☐ road bike tour ☐ mountain bike tour ☐ camping tour
- Other outings:** ☐ snowshoe tour ☐ caving ☐ other

WOULD YOU LIKE TO SUPPORT?

The Club also depends on volunteers for all the rest of its work. Some of this work is critical to the day-to-day functioning of the Club; some of it is important to our community; some of it is just fun. You can let us know how you'll help by checking off activities below.

- Conservation:** ☐ air and water quality issues ☐ trailhead access ☐ wilderness
 ☐ telephone tree ☐ trail clearing
- Socials:** ☐ social host ☐ Party assistance ☐ lodge host
- Rambler:** ☐ word processing ☐ mailing ☐ advertising ☐ computer support
- Lodge:** ☐ general lodge repair ☐ skilled lodge work
- Information:** ☐ public relations ☐ membership help ☐ recruiting ☐ instruction

Would you like to participate on an activities committee? Which one?

Is there a special trip or activity you would like to lead?

What phone numbers can we use to reach you?

Utah Avalanches Forecast Center
Wasatch Front 364-1581
Park City Area 649-2250

January 1996

WASATCH MOUNTAIN CLUB
888 South, 200 East, Suite 207
Salt Lake City, UT 84111-4220

SECOND CLASS
POSTAGE PAID
SALT LAKE CITY, UT