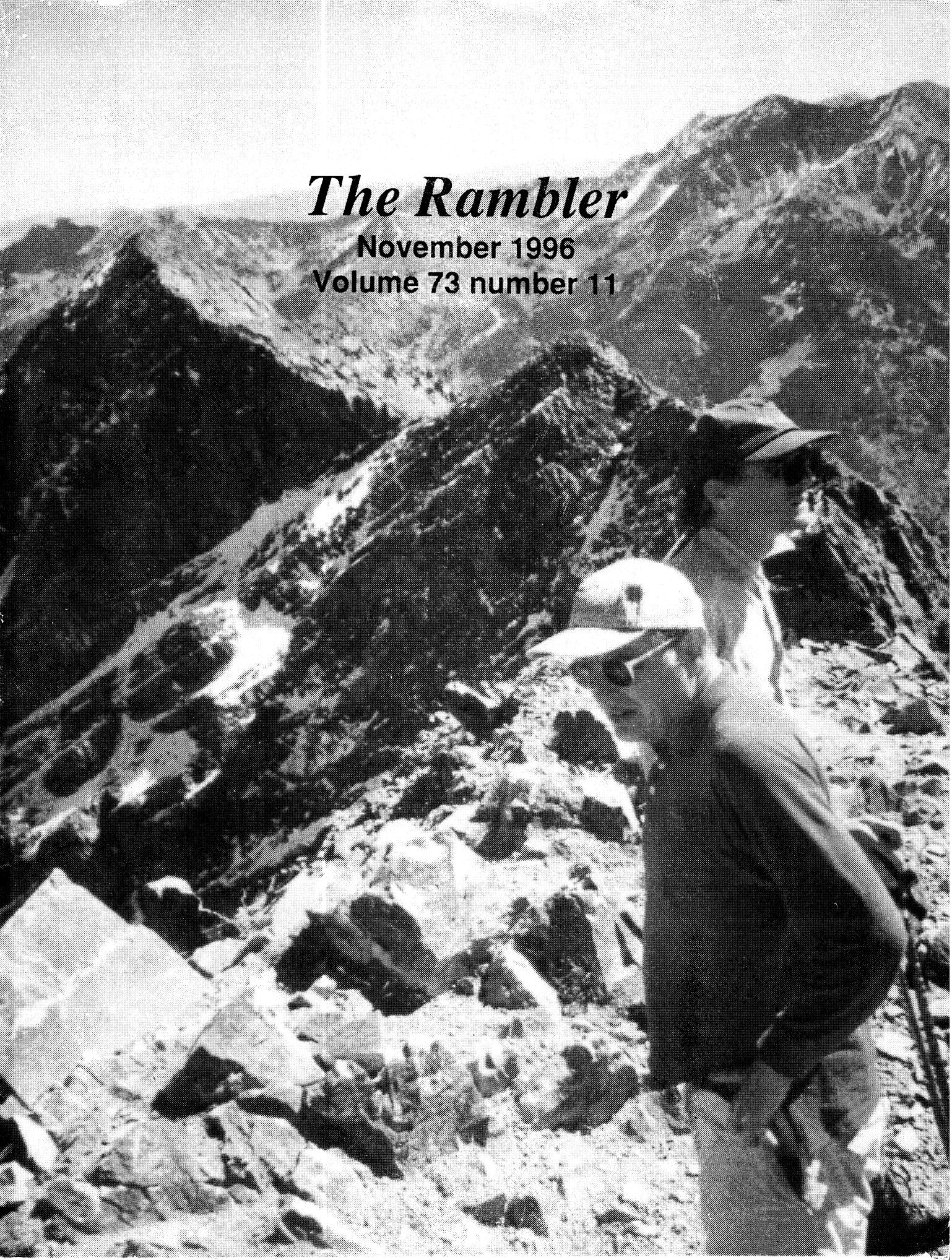


The Rambler

November 1996

Volume 73 number 11



Managing Editors

Kathy Anderson and Rob Merritt

ADVERTISING vacant
CLASSIFIED ADS Sue deVall
MAILING Laila Hughes and Randy Long
PRODUCTION Kathy Anderson and Rob Merritt

The *Rambler* (USPS 053-410) is published monthly by The WASATCH MOUNTAIN CLUB, Inc., 1390 S., 1100 E., suite. 103, Salt Lake City, UT 84105-2443. Telephone 463-9842. Subscription rates of \$12.00 per year are paid for by membership dues only. Periodical Class postage paid at Salt Lake City, Utah.

POSTMASTER: Send address changes to *The Rambler*, Membership Director, 1390 S, 1100 E., Salt Lake City, UT 84105-2443. CHANGE OF ADDRESS: This publication is not forwarded by the Post Office.

The right is reserved to edit all contributions and advertisements and to reject those that may harm the sensibilities of WMC members or defame the WMC.

Copyright 1996 Wasatch Mountain Club

Office Telephone 463-9842
Address 1390 S. 1100 E., Ste 103
Salt Lake City, UT 84105-2443
WMC Home Page
<http://www.drmpark.com/~wmc>

PROSPECTIVE MEMBER INFORMATION

Applicants must attend two official WMC activities other than socials. Activities are listed in *THE RAMBLER* which is the official publication of the Wasatch Mountain Club, published by and for its members. Prospective members may receive *THE RAMBLER* for two months by writing the Membership Director at the above address and enclosing a check for \$5.00 payable to the Wasatch Mountain Club. (There is a \$10.00 charge for returned checks.) An application form may be found in the center of *THE RAMBLER*. Ask the activity trip organizer to sign your form after completing the activity.

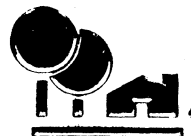
MEMBERS: If you have moved, please call the WMC office or send your new address to the Membership Director. Allow 45 days for address changes. If you did not receive your *RAMBLER*, contact the Membership Director to make sure the WMC has your correct address. Replacement copies are available, while they last, at the WMC office during office hours.

TO SUBMIT AN ARTICLE or PHOTOGRAPH: Articles should be on diskette, MS/DOS or Macintosh format, and preferably in Microsoft Word or WordPerfect form. Label the diskette with your name and identify what file(s) are submissions. Enclose a hard copy in case your diskette cannot be read. Mail submissions to Publication Director at the office address, or hand deliver them to the WMC office. Leave hand deliveries in the **Blue** box outside the door. The deadline is 6:00 PM on the 15th of the month. Photos of all kinds, B&W and color prints, and slides. Make sure that the photo is labeled with the photographer, date, and names of people. Unless a stamped, self-addressed envelope is provided, returned submissions will be available in the **Red** box outside

WMC Purpose

(Article II of the WMC Constitution)

The purpose shall be to promote the physical and spiritual well being of its members and others by outdoor activities: to unite the energy, interests and knowledge of students, explorers and lovers of the mountains, deserts and rivers of Utah; to collect and disseminate information regarding the Rocky Mountains in behalf of science, literature and art; to explore and picture the scenic wonders of this and surrounding states; and to foster awareness of our natural areas including their plants, animal and bird life.



Chris Venizelos
Sales Executive

WARDLEY BETTER HOMES & GARDENS
4455 South 700 East, Ste. 104 • Salt Lake City, Utah 84107
Office: (801) 266-4663 • Residence: (801) 364-4544

TMB The Mortgage Broker
(801) 261-8584
Danell Proulx

ALL LOAN TYPES

INCLUDING:

**FHA/VA
CONSTRUCTION**

**** For every loan closed through this ad, I will donate \$300.00 to the WMC for conservation work, so tell your family and friends.**

VESTED INTEREST!

Fun & Functional
Insulating Vests for Layering or Wearing Alone.



Columbia Shoshone Vest
100% polyester, mechanical stretch MTR Fleece™. Two zipper-closed security pockets. Evergreen, Black, Black Cherry, or Celestial. Men's S to XL. Women's S to XL.

54.95



RailRiders® Quilted Fleece Vest
Polartec® 200 Fleece with Supplex® nylon lining. High collar for cozy warmth. Navy, Black, or Balsam. Unisex.

59.95



The North Face Inside Track Vest
Polartec® 200 DWR Fleece with two pockets and long back for extra warmth. Black, Peat, Laurel, Aztec Blue, and Claret. Unisex.

69.00



Mountain Hardwear Chill Factor Vest
Polartec® BiPolar Technology™/200 Velour/Shearling fleece. Zippered upper security pocket, high collar. Latte, Moss, or Cobalt. Unisex.

85.00



The North Face Women's Nirvana Fleece Vest
New Polartec® BiPolar Technology™ Series 200 Fleece for soft inner, wind protective outer. High collar, drawcord waist. Black, Mallard, and Atlantic. Women's.

90.00



Patagonia® Lightweight Synchilla® Vest
8 oz. PCR™ Polyester Fleece. Two zip handwarmer pockets. So soft! Red, Purple, Teal, Blue, and Black. Unisex.

72.00



Marmot Windstopper® Micro Vest
Super functional; windproof, water resistant with Polartec® Power Stretch® fleece side panels & 2 inside pockets. Forest, Cobalt, & Black. Unisex.

109.00



The North Face Baffin Vest
Eider Cloth Shell with 550 fill Goose Down. Two interior pockets and stowable shell hood! Tan or Navy. Unisex.

145.00

Fifty Models in All!
Fleece, Pile, MicroFleece®, Windstopper® & Down

 **Kirkham's®**
outdoor products

3125 South State Street (801) 486-4161 Open: Monday - Friday 9:30 to 9:00 Saturday to 7:00 Sunday to 5:00

STATEMENT OF OWNERSHIP

United States Postal Service

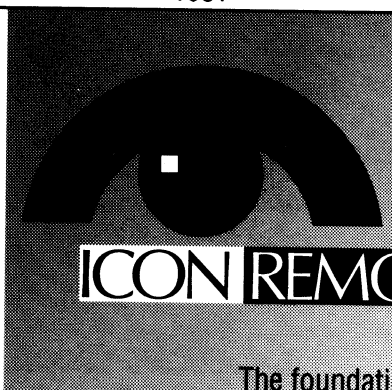
Statement of Ownership, Management, and Circulation (required by 39 U.S.C. 3685)
for The Rambler published monthly at 1390 South 1100 East, SLC, UT 84105
and having headquarters and general business offices at the same address.

The names and complete mailing addresses of the publishers, editors, and managing editors and publishers and editors: Kathy Anderson and Rob Merritt - WMC 1390 S 1100 E, SLC, UT 84105; Editors: Kathy Anderson - 2815 Sleepy Hollow Dr., SLC, UT 84117 and Rob Merritt - The Lodge at Snowbird, Snowbird, UT 84092; no managing editors

The owner is Wasatch Mountain Club - 1390 S 1100 E, SLC, UT 84105. There are no known bondholders, mortgages, or other security holders owning 1% or more of total amount of bonds, mortgages, or other securities.

	Average No. Copies Each Issue During Preceding Twelve Months	Actual No. Copies of Single Issue Published Nearest to Filing Date.
Total # copies (net press run)	1051	1051
Total Paid and/or Requested Circulation	974	974
1) Sales through dealers and carriers, street vendors and counter sales	42	42
2) Paid or Requested Mail Subscriptions	932	932
Free distribution by mail	42	42
Free distribution outside the mail (carries or other means)	15	15
Total Free distribution	57	57
Total distribution	1031	1031
Copies not distributed	20	20
Return from News Agents	0	0
Total Sum	1051	1051

I certify that this information by this form is true and complete
Laila Hughes



ICON REMODELING

The foundation and
structure remain
the same, only
the name has changed.

Robert **MYERS**
Vali **MAHAK**

485-9209

Icon Remodeling vision made visible

BULLETIN BOARD

WMC LODGE

AVAILABLE FOR RENTAL USE

The WMC Lodge can be rented on a full or half day basis. Full day rate is \$225. Contact Julie Jones (1-801-278-4753) for information.

TENNIS NETWORK

We are a group of WMC members that play tennis regularly. Our levels range from 2.5 - 4.0. If you are interested in playing, please contact Jeri at 561-3777.

ATTN HIKERS, HIKING DIRECTORS, ETC.

If you are hiking and notice any maintenance problems on the trail, please let Chris Biltoft (364-5729) know. That way, he will have an idea of which trails need to be worked on on our next trail maintenance project with the forest service. Your help in this would be greatly appreciated.

WMC OFFICIAL HIKING MAPS

Copies of the official WMC Map, "Hiking The Wasatch" are available to WMC members at a discount. The map retails for \$10 but members can obtain copies for \$8.50 including sales tax. The Club also profits from these sales. The maps are available at the WMC office during office hours and on many WMC activities.

International Folk Dancing every Monday evening at the University of Utah in the East Ballroom of the Student Union. Teaching from 7:30 to 8:15 PM. No partner needed.

You don't want to spend another winter hibernating. You THINK you might be interested in ski touring or snowshoeing, but you've never done it before. You don't know what to wear, where to go, what equipment you'd need, and in the back of your head, you want to make sure those snow loving WMCers aren't mass murderers, or worse, geeks!

INTRODUCTION TO WINTER ACTIVITIES

WHEN: Saturday, December 7th 7:00pm **WHERE:** Home of Tom and Jacque Walsh
BRING: Snacks and a beverage **INFO:** Tom Walsh (969-5842), Russ Pack (572-5653)
In an informal social setting, the skiers and snowshoers will talk about our Winter activities, and show you the equipment and clothing needed to venture out into the Wasatch Winter Wonderland.

WASATCH MOUNTAIN CLUB ACTIVITIES

Only activities approved by the appropriate WMC director can be listed in the Club activities section of *The Rambler*. Send your proposed activity for approval to the hiking, boating, skiing, etc., director for inclusion in their activity schedule. Those activities sent directly to *The Rambler* without approval will not be published.

*** Participation in any WMC activity can be dangerous. It is **your** responsibility to evaluate your own preparedness and ability to safely participate in any activity.

*** On ski tours requiring avalanche transceivers, be advised that this season, only beacons compatible with the new international frequency standard (457 kHz) will be accepted on WMC ski tours.

+++ On bike rides and climbs, helmets must be worn.

ACTIVITY SCHEDULE

OCT 30 WED

CLIMBING - WASATCH FRONT CLIMBING GYM - BEGINNERS WELCOME! Join Kristen Keefe any time after 7:00 PM for an evening of indoor climbing at 427 West 9160 South. Cost is \$7.00 per visit, or monthly memberships are available. Rental gear is available. If you would like to learn how to climb or need more information call Kristen (484-8729). Since this is a professionally monitored, controlled environment, helmets are not required.

NO 2 SAT

BIKE:ROAD/MTN LAYTON DELI (MOD). Tom Walsh (969-5842) will coordinate this luncheon ride to the German deli in Layton. This is a flat out-and-back ride of about 48 miles. Meet at the Agriculture Bldg (350N Redwood) at 10AM ready to ride. Helmets required. Note: Call the organizer if the weather is questionable.

NOVEMBER 2 SAT

BOATING: END OF SEASON WORK PARTY. The action starts at 9 am for the end of season equipment cleanup. Please join us and make this job more fun. Wear your grubby clothes, we will be doing some dirty work.

NOV 3 SUN

BIKE: ROAD BRIGHAM CITY-TREMONTON LOOP (MOD+). Rick Kirkland (486-0909) is headed for the north country for this 57 miler. Meet at the SW corner Capitol parking lot at 9AM to carpool, or at 10AM ready to ride at Reese-Pioneer Park (8thW & Forest) in Brigham City. Helmets required. NOTE: If weather is inclement, call by 8:30 to see if ride will go.

NOV 4 MON

CLIMBING - ROCREATION CLIMBING GYM - BEGINNERS WELCOME! Join Herb Hayashi any time after 5:30 PM for an evening of indoor climbing at 2074 East 3900 South. Discounted cost for WMC members is \$7.00 per visit, or monthly memberships are available. Equipment rental is free to WMC members. If you would like to learn how to climb or need more information call Herb (255-9652). This particular evening at the climbing

gym is geared towards families and younger participants are welcomed. Since this is a professionally monitored, controlled environment, helmets are not required.

NOV 6 WED

BOARD MEETING at 7:00 pm at the WMC office located at 1390 S 1100 E Suite 103. This meeting is open to all WMC members.

NOV. 6 WED

SOCIAL: TGIW OVER THE HUMP DAY Ready for a welcome break from your hum-drum workweek? How about a new event? Beers and THE BAY with Bill!!! We'll start the party at Red Rock Brewery (254 South 2nd West) for a bite and a brewski. Then on to "THE BAY" (404 South West Temple) for dancing. Bill plans on starting at Red Rock at 7-ish -- RSVP 451-5532 to reserve seating. If joining at THE BAY later, come before 9 to get group rate of \$3/person.

NOV. 6 WED

SOCIAL: MOVIE NIGHT - Meet Catherine (363-2343) for dinner at 6:00 p.m. at the Pier 49 San Francisco Sourdough Pizza Co. (2227 Highland Dr.) before a movie. Co-listed with the Sierra Singles.

NOV 9 SAT

BIKE: ROAD/MTN UTAH LAKE-BRIDAL VEIL FALLS (NTD). Liz Cordova (943-1871) is coordinating this socially-oriented 26 miler, mostly on paved bike paths. Children are welcome on this ride. Meet her at the 12300S/I-15 Park & Ride (east side) at 9:30AM to carpool, or at 10AM just outside the Utah Lake State Park entrance (I-15 exit 268, west on Hwy 114 for 2.4 miles-park on right). Helmets required. NOTE: If the weather is inclement, call her before 9:00 to see if the ride will go.

NOV. 9 SAT

SOCIAL: DINNER/DANCING Meet Catherine (363-2343) at 7:00 p.m. at the Long Life Vegi House (1353 East 3300 South). Live band arrangements will be made for after dinner. Call Catherine for reservations by Thursday, Nov. 7th. Co-listed with the Sierra Singles.

NOV 9 SAT

SKI TOUR/HIKE SCOTT'S PASS NTD Ice breaker! Tom Silberstorf (255-2784) The first ski tour of the

season! Bring some goodies to celebrate the new ski season. If the conditions are not favorable, Tom will organize a hike. If there is snow, skins are recommended, and no wimpy track skis please.

NOV 10 SUN

BIKE:ROAD/MTN CROMPTON'S (NTD+). Join Chuck Howisey (364-4820) on this easy-paced, socially-oriented 25 miler to Crompton's cafe for brunch. Much of the route is bike-path designated, and traffic should be light. Meet Chuck in the NE corner Capitol parking lot at 10AM. Helmets required. NOTE: If the weather is inclement, call Chuck by 9:30 to see if the ride will go.

NOV. 13 WED

SOCIAL: CULTURAL ELITE MOVIE NIGHT. Meet Sue (583-4552) at 6:00 p.m. for dinner at Park Ivy (878 South 900 East) before watching a movie at the Tower that the mainstream theaters wouldn't dare show. Co-listed with the Sierra Singles.

NOV 13 WED

CLIMBING - WASATCH FRONT CLIMBING GYM - BEGINNERS WELCOME! Join Kristen Keefe any time after 7:00 PM for an evening of indoor climbing at 427 West 9160 South. Cost is \$7.00 per visit, or monthly memberships are available. Rental gear is available. If you would like to learn how to climb or need more information call Kristen (484-8729). Since this is a professionally monitored, controlled environment, helmets are not required.

NOV. 15, FRI

ATTENTION * DOUBLE HEADER MAINLINE EVENT!***SOCIAL: TGIF WITH PHYLLIS AND "SAM".** Meet at Red Rock Brewery (254 South 2nd West) at 5:30 p.m. to unwind with your WMC friends and a brew or two. Red Rock TGIF'ing to be followed by:***SING-A-LONG (NTD!!!).** Join Frank Bernard (533-9219) at 7:00 p.m. Bring your voice and/or guitar to Frank's home at 417 N. Center Street in Capitol Hill (about 130 West 400 North), and we'll entertain ourselves in this 100% audience participation event. Bring your own beverage and snacks - an enthusiastic attitude is the only other requirement!

NOV. 15, FRI

SOCIAL: FOREIGN FILM MOVIE NIGHT - Choose from a special selection of foreign films at Craig's house at 7:00 p.m. Call Craig at 575-6152 for directions and details. Co-listed with the Sierra Singles.

NOV 16 SAT

BIKE: ROAD/MTN ROY-ANTELOPE ISLAND (MOD). Join Bill Walton (969-8948) on this 48 miler to and around Antelope Island. No significant climbing is involved. Buffalo burgers are an option for lunch if the vendor is still open on the island. Meet Bill at 9AM at the SW corner Capitol parking lot to carpool, or at

10AM at the Roy Recreational Complex (2150W 4700S) in Roy. Helmets required. NOTE: If the weather is inclement, call Bill by 8:30 to see if the ride will go.

NOV 16 SAT

SKI TOUR/HIKE NTD with Barb Richards. (484-8079) The destination is Scott's pass, therefore Barb requests that you bring sturdy skiing equipment (no track or light touring equipment please!). If the snow conditions are questionable, call Barb to see what she's going to do.

NOV 16 SAT

ORGANIZERS CHOICE SKI TOUR/HIKE MOD with Pete Mimmack (801-377-2330) Pete doesn't know where's he's going, but we all know that this charismatic fellow is partial to soft powder. If the snow's questionable, Pete will go hiking, so call him to find out what's on the agenda. Otherwise meet him at the Butler Elementary school at 9 am. Please bring your avalanche transceivers, shovels and skins.

NOV 17 SUN

BIKE: ROAD/MTN ALPINE (MOD). Doug Murray (968-8494) will take us to the picturesque community of Alpine, nestled under Lone Peak, in northern Utah County. This is 48-mile out and back ride with a minor climb over the Point. Meet him at 10AM at West Jordan Park (7941S 2200W). Helmets required. NOTE: If the weather is inclement, call him by 9:30 to see if the ride will go.

NOV. 17, SUN

******ENTERTAINMENT PLANNING MEETING****POTLUCK - ALL WELCOME.** This is the group that concocts all those fun events you've been enjoying. Why not come and share YOUR great ideas...No obligation. Join us in planning the holiday and winter social events at Lori's (1261 Yale Ave./583-8133) 5-7 p.m.

NOV 17 SUN

SKI TOUR DESOLATION LAKE MOD with Larry Larkin (486-9060) If snow conditions are less than desirable, call Larry to see what hike he's gonna do. Please bring your avalanche transceivers, shovels and skins. Meet at the Butler Elementary school at 9 am.

NOV 17 SUN

SKI TOUR DOG LAKE NTD or Organizers choice with Jerry Hatch (583-8047) Meet at the Butler Elementary School Parking lot at 9 am. Good backcountry equipment and skins are strongly recommended.

NOV 18 MON

CLIMBING - ROCREATION CLIMBING GYM - BEGINNERS WELCOME! Join Herb Hayashi any time after 5:30 PM for an evening of indoor climbing at 2074 East 3900 South. Discounted cost for WMC members is

\$7.00 per visit, or monthly memberships are available. Equipment rental is free to WMC members. If you would like to learn how to climb or need more information call Herb (255-9652). This particular evening at the climbing gym is geared towards families and younger participants are welcomed. Since this is a professionally monitored, controlled environment, helmets are not required.

NOV. 19, TUES

SOCIAL: BREWPUB MOVIE NIGHT - Lou (553-8107) will be at the Desert Edge Brewery, Trolley Square, at 6:00 p.m. for dinner and a movie. Co-listed with the Sierra Singles.

NOV. 23, SAT

SOCIAL: HARVEST DINNER AND DANCING.

Hendrickson Range Clubhouse is the setting for WMC's Harvest Festival dance. From Eastbound I-80, go up Parley's Canyon to exit 134 (East Canyon) turn right (not towards Mtn. Dell), follow the road a-ways, and make another right into the parking lot. Since there may be limited parking, K-mart is a great place to car-pool from. Please make own carpooling arrangements. Dinner at 6:30 p.m., line and square dancing at 8:00 p.m. **(No partners or experience needed.)** Please bring Thanksgiving dishes for 6 to share. Turkey and coffee will be provided. A competition for the best pie will be judged by our distinguished panel of WMC gourmards/food-lovers. Bring canned or boxed food items which will be gratefully accepted for the Salt Lake Food Bank. Cost is \$6/members and \$8/non-members. Call Mary Ann/537-1929, Sam/262-6698 or Eileen/255-4336 to enter pie competition by 7:00 p.m. at clubhouse.

NOV 23 SAT

SKI TOUR GREENS BASIN NTD with Eileen Gidley (255-4336) Meet at the Butler Elementary School Parking lot at 9 am. No track or light touring equipment please and please bring your avalanche transceivers, shovels and skins.

NOV 23 SAT

SKI TOUR POWDER PARK MOD with George Swanson (466-3003) Meet at the Butler Elementary School Parking lot at 9 am. Bring your avalanche transceivers, shovels and skins and find out what the "powder" in Powder Park means!

NOV 23 SAT

SNOWSHOE: TOUR ORGANIZERS CHOICE (NTD) Depending on snow conditions, Russ Pack (572-5653) will be organizing the kickoff tour of the season. Meeting time and meeting location for all November and December snowshoe tours will be 9:30AM and Butler Elementary respectively unless specifically noted otherwise.

NOV 24 SUN

BIKE: MOUNTAIN: STANSBURY ISLAND (MOD+). If the weather looks good, call Rick Kirkland (486-0909) by Saturday 11/23 for details. We can carpool

from Salt Lake and begin the ride late in the morning. Helmets required.

NOV 24 SUN

SKI TOUR/HIKE MOD+ and Deer Valley wine Tasting. Edgar Webster (583-0703) Edgar will organize a jolly group of folks on a hike or ski in the Park City area, and then off to the Nouveau Beaujolais Wine Tasting at Deer Valley. The cost is around \$40/person. (For the wine tasting!) Call Edgar to register.

NOV 24 SUN

SKI TOUR SILVER FORK EL/NTD with Sherry Handy (262-6200) Meet at the Butler Elementary School Parking lot at 9 am.

NOV 24 SUN

SKI TOUR ORGANIZERS CHOICE MOD with Karen Perkins (272-2225) Meet Karen at the Butler Elementary School Parking lot at 9 am. and bring your avalanche transceivers, shovels and skins.

NOV 24 SUN

SKI TOUR MSD with George Westbrook (942-6071) Climb the tallest peaks! Ski the gnarliest chutes! And do it all with one of the nicest people in the mountain club! Call George to register and, of course, avalanche transceivers, shovels and skin are required.

NOV 24 SUN

SNOWSHOE: TOUR ORGANIZERS CHOICE (NTD) Tom Willis (485-0370) will be tour organizer for today. Meeting time and place noted for Nov 23rd tour. Call if weather is questionable.

NOV 27 WED

CLIMBING - WASATCH FRONT CLIMBING GYM - BEGINNERS WELCOME! Join Kristen Keefe any time after 7:00 PM for an evening of indoor climbing at 427 West 9160 South. Cost is \$7.00 per visit, or monthly memberships are available. Rental gear is available. If you would like to learn how to climb or need more information call Kristen (484-8729). Since this is a professionally monitored, controlled environment, helmets are not required.

NOV 29 to DEC 1 FRI THRU SUN

BIKE: MOUNTAIN BIKE IN MOAB (MOD). The weather is usually still great and the prices cheap this late in the year. Why be down on your luck, stuck in the muck? Paradise is nearby. Reserve your spot before 11/20. Rick Kirkland (486-0909).

NOV 29 FRI

SKI TOUR MOD with Jim Piani (272-3921) Annual Turkey tour! The esteemed Jim Piani, master of the mountain, tamer of hills and about the smoothest skier around will take any and all lucky folks to the prime powder. Meet him at Lot #2 (see the skier and

snowshoer parking map) at 9 am. Avalanche transceivers, shovels and skin are required.

NOV 30 SAT

SKI TOUR TOM'S HILL MOD with Tom Walsh (969-5842) Tom, the Maestro of the mountain entertains all with his finely tuned instrument of winter delight! To see him in action meet him at the Butler Elementary school parking lot at 9 am. Avalanche transceivers, shovels and skin are required.

NOV 30 SAT

SKI TOUR DAYS FORK NTD with Mike Hendrickson. (942-1476) Meet at the Butler Elementary school parking lot at 9 am. This is always a good tour, but please bring skins and sturdy backcountry equipment as there is a bit of vertical.

NOV 30 SAT

SNOWSHOE: TOUR ORGANIZERS CHOICE (NTD) Knick Knickerbocker (272-2485) will be the tour organizer for today. Call if weather is questionable.

DEC. 1 SUN

ANNUAL BURY THE BIRD POTLUCK - CALL OFFICE FOR DETAILS/463-9842 OR LORI/583-8133.

DEC 1 SUN

SKI TOUR NORTH OGDEN. MOD+ Brian Barkey (801-394-6047) Another organizers choice ski tour. One can never know what the future is like until you get there, but the journey is often worth it. One can never what or where Brian's going until you call him (i.e. a day or two before the he goes) and his journey's a a guaranteed hoot! If, by some unfortunate twist of fate, if there's no snow, Brian reserves the right to ride his mountain bike. If there's ski-able terrain, avalanche transceivers, skins and shovels will be needed.

DEC 1 SUN

SKI TOUR NORWAY FLATS (UINTA'S) MOD with C. T. Cardwell (487-1456). Normally this is an NTD, but by pushing a bit further, this one is upgraded to a MOD. Meet at the Parley's K-mart parking lot at 9 am. to carpool.

DEC 1 SUN

SNOWSHOE: TOUR ORGANIZERS CHOICE (NTD+) Gretchen Siegler (461-0407) will be the tour organizer for today. Call if weather is questionable.

DEC 2 MON

SKI TOUR SILVER FORK MINE NTD with Craig Anderson (487-2077) Meet at the Butler Elementary school parking lot at 1 PM. (Note the time!) A very laid back tour with a very mellow fellow. Skins are recommended!

DECEMBER 5 THURS

BOATING: END OF SEASON PARTY AND PERMIT PLANNING. Join the fun at Janice Huber's house at 7 PM for a pot luck, show off your pictures of last season, get information about permits for the next season. I'll see you there!

DEC 7 SAT

SKI TOUR DOG LAKE NTD with Sharon Coons (561-7118) Meet Sharon at the Butler Elementary school parking lot at 9 am. Avalanche transceivers, shovels and skin are recommended.

DEC 7 SAT

SKI TOUR ORGANIZERS CHOICE MOD with Dallas Chopping (294-0061). Where Dallas goes, you must follow, for he leadeth ye not into crud, but into the best powder you'll ever see. Truly a heavenly experience! Meet at the Butler Elementary school parking lot at 9 am. Avalanche transceivers, shovels and skin are required.

DEC 7 SAT

SNOWSHOE: TOUR ORGANIZERS CHOICE (NTD) Loraine Lovell (272-4601) will be the tour organizer for today. Call if weather is questionable.

DEC 8 SUN

SKI TOUR LAKE CATHERINE NTD+ with Tom Silberstorf (255-2784) A favorite winter destination for the club. See why Tom loves it up here. Meet at the Butler Elementary School parking lot at 9 am. Bring your avalanche transceivers, shovels and skins.

DEC 8 SUN

SKI TOUR WHITE PINE CANYON (OR ORGANIZERS CHOICE) MOD with the Princess of the Mountain Leslie Woods (484-2338). If the powder is not fluffy enough in White Pine to satisfy our royal highness, she shall send her minions to fairer meadows! Meet her at Butler Elementary school parking lot at 9 am. and of course, avalanche transceivers, shovels and skin are required.

DEC 8 SUN

SKI TOUR AMERICAN FORK TWINS MSD with George Westbrook. (942-6071) An early start is required for this one, so call George to get the details. Avalanche transceivers, shovels and skin are required.

DEC 8 SUN

SNOWSHOE: TOUR ORGANIZERS CHOICE (NTD+) Norm Pobanz (266-3703) will be the tour organizer for today. Call if weather is questionable.

DEC 14 SAT

SKI TOUR TO SCOTT'S PASS NTD with Larene Miller (278-8758) Due to the trees and slightly more than an easy incline, please bring sturdy backcountry equipment. Skins are recommended. Meet her at Butler Elementary school parking lot at 9 am

DEC 14 SAT

SKI TOUR CATHERINE'S PASS MOD- with Mike Budig (328-4512) . A favorite destination of the club with good reason, this is a fun tour! Meet Mike at the Butler Elementary school parking lot at 9 am. and avalanche transceivers, shovels and skin are required.

DEC 14 SAT

SNOWSHOE: TOUR ORGANIZERS CHOICE (NTD) Holly Smith (272-5358) will be the tour organizer for today. Call if weather is questionable.

DEC 15 SUN

SKI TOUR RED PINE CANYON MOD with Hank Winauer (277-1997) Meet at the Butler Elementary school parking lot at 9 am. Avalanche transceivers, shovels and skin are required.

DEC 15 SUN

SKI TOUR PFEIFFERHORN MSD with George Westbrook (942-6071) The view from the top is wonderful, but it is a challenging trip. Call George to get the specifics and of course avalanche transceivers, shovels and skin are required on this tour.

DEC 15 SUN

SKI TOUR BEAVER CREEK (UINTA'S) NTD with Barb Petty (583-3134) Dogs are welcome on this trip! Meet Barb at the Parley's K-mart parking lot at 9 am. to carpool. Please call Barb to find out about snow conditions.

DEC 15 SUN

SNOWSHOE: TOUR ORGANIZERS CHOICE (NTD/Penguin Paced) Tom Willis (485-0370) will be the tour organizer for the penguin paced snowshoe today. Call if weather is questionable.

Dec 21 Sat

SNOWSHOE: DAYS FORK (NTD/Penguin Paced) Knick Knickerbocher (272-2485) will be the tour organizer for a slooow paced snowshoe up Days Fork. By slow, Knick means turtle, crawler or penguin waddle. So all you new snowshoers, slow old snowshoers or just lazy snowshoers, come join Knick for a Penguin paced tour.

DEC 22 SUN

SNOWSHOE: SCOTTS PASS (NTD+) Russ Pack (572-5653) did the first WMC snowshoe tour last season about this time of the year to Scotts Pass, so join Russ and either get acquainted or renew your acquaintance with Scotts Pass in the wintertime. See you at 9:30am at Butler Elementary.

JAN 5 SUN

TELEMARK CLASS: PHASE ONE NTD/MOD Edgar Webster (583-0703) Learn to telemark ski with style and grace, learn to avoid "yard sales" and "cranial cristies"! The plan is to buy an afternoon Albion pass

at Alta, form groups and get to it! Meet at the Butler Butler Elementary school parking lot at noon to carpool up to Alta and meet Edgar at the ski school building at 1 pm. Please call Edgar to register and especially to help instruct.

Insurance Needs?

Call

HOLLY SMITH, CIC

Member of "The Wasatch Mountain Club"

487-4141

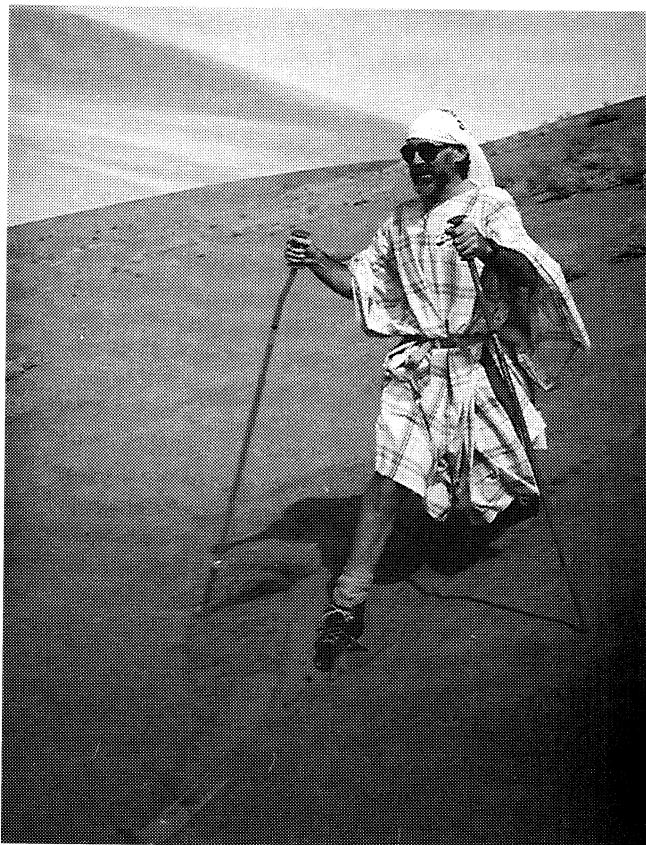
*FOR A COMPETITIVE RATE QUOTE
ON YOUR*

**HOME • AUTOMOBILE • BOAT
LIFE • HEALTH • BUSINESS**

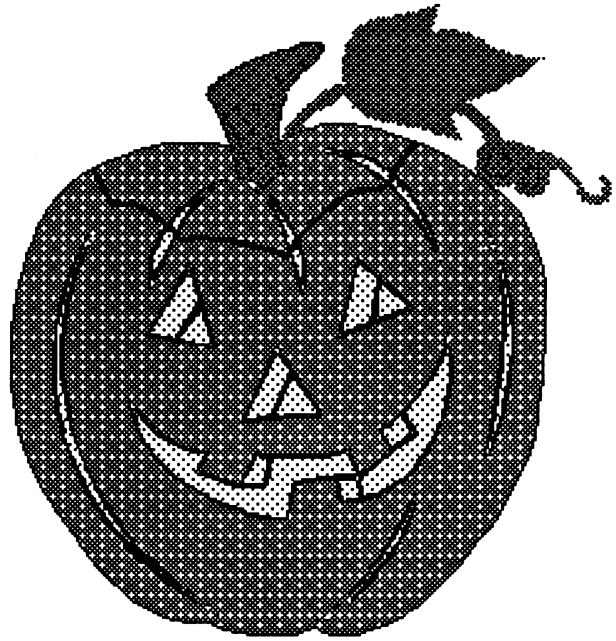
John Henry Smith Insurance

FAX 487-4872

601 EAST 2100 SOUTH
SALT LAKE CITY, UTAH 84106



HARVEST CELEBRATION & SQUARE DANCE



DATE: Saturday, 23 November

TIME: 6:30P - 8:00P dinner

8:00P - 11:00 square
dancing

Bart will give us instruction
as he does the calling; no partners required.... Grab a partner or trade
partners while you dance!

WHERE: Hendrickson Lodge

[Take I-80 east up Parley's tp exit 134 (Mountain Dell
Recreation exit); turn right and follow frontage road
to the parking lot].

COVER: \$6 Members
\$8 Non-members

[Includes turkey and coffee] Please be sure to bring a cover dish pot-
luck item --salads, vegetables, and desserts.

ADDED ATTRACTION: Home-made pie judging contest! [yum-
yum] Will you have the winning entry?

**FOOD DONATIONS WILL ALSO BE ACCEPTED FOR THE
SALT LAKE FOOD BANK.**

COMING ATTRACTIONS

DECEMBER'S COMING ATTRACTIONS

Dec. 6TH, FRIDAY - SING-A-LONG AT FRANK BERNARD'S.

Dec. 8TH, SUNDAY - SNOWSHOEING WITH THE SIERRA SINGLES.

Dec. 10TH, TUESDAY - ICE SKATING AND HOT COCOA.

Dec. 12TH, THURSDAY- COMEDY CLUB WITH THE SIERRA SINGLES.

Dec. 17TH, TUESDAY - MOVIE NITE WITH THE SIERRA SINGLES.

JANUARY'S MAIN EVENT

DON'T FORGET JANUARY 18TH, SATURDAY FOR THE WMC BACCHANALIAN BANQUET AND BALL. START SAVING NOW AND GET OUT THAT "LITTLE BLACK DRESS" AND SPECIAL OCCASION JACKET AND TIE.

A YURTING WE WILL GO!!

We have reserved 4 yurts this season for the explicit use of the mountain club.

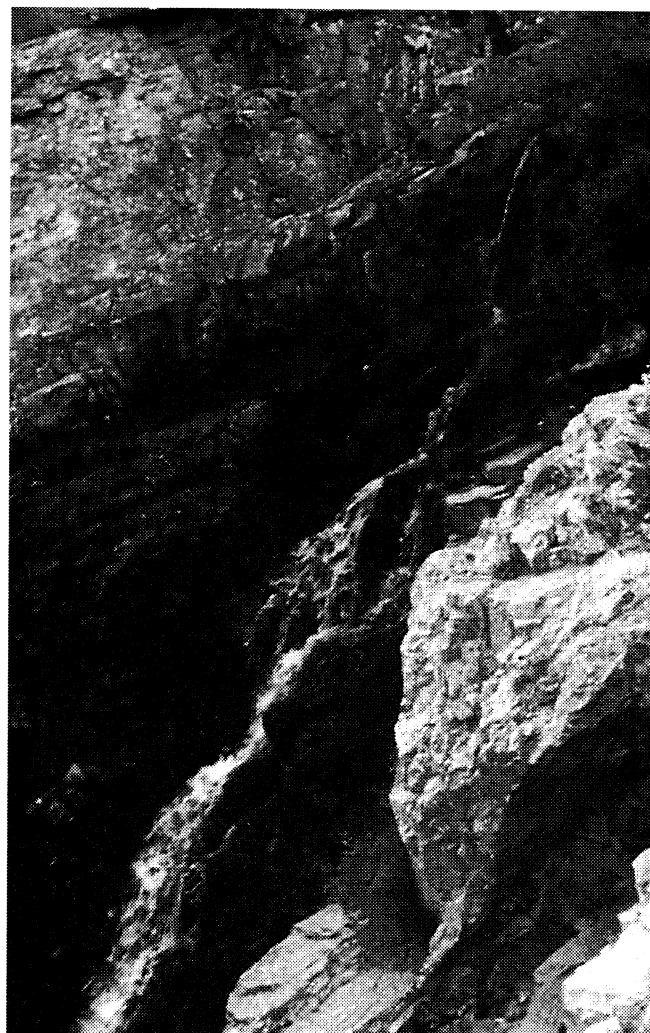
Jan. 3 and 4 Location:
Bunchgrass
Yurt in Logan
Canyon.
Leader: Tom
Walsh (969-
5842)

Feb. 15 and 16 (Pres.
holiday)
Location:
Steam Mill
Yurt in Logan
Canyon.
Leader Edgar
Webster
(583-0703)

Mar. 1 and 2 Location:
Bunchgrass
Yurt in Logan
Canyon.
Leader: A
volunteer is
needed.

Jan. 18 and 19. (Human
rights day)
Location:
Baldy Knoll
at Driggs,
Idaho.
Leader: A
volunteer is
needed.

With the maximum of 6 people in the Logan yurts, the cost is \$48 per person for the two night stay. The Idaho yurt is approximately \$40 per person with the maximum of 8 people for the two night stay. There are other costs (i.e. a guide/porter which may be desired/required) which will be divided among the group. Note, yurt skiing is a very popular activity and these trips fill very fast! To get on the waiting list call the respective leader. For the trips without leaders call Brian Barkey (801-394-6047) to volunteer to be the leader and/or get on the waiting list.



Classy Ads:

Notice: *The Rambler* cannot accept any ad that is inconsistent with the purposes of the WMC or offends the sensibilities of Club members. Send your ad, with enclosed payment if required, to **Sue DeVall**, 11730 S., 700 W., Draper, UT 84020. Please submit by the 12th of the month to ensure your ads inclusion.. Advertising rates are \$5.00 for up to 20 words and 20¢ for each additional word. WMC members may place **free** ads for used recreational gear or for private **non-commercial and not-for-profit** activities

WANTED: ANY PHOTOS, GRAPHICS, or other ideas suitable for the cover page of future rambblers. Please put any submissions in the blue box outside the office door complete with captions or appropriate explanations before the 15th of each month.

WANTED: ANY PHOTOS, GRAPHICS, or other ideas suitable for the cover page of future rambblers. Please put any submissions in the blue box outside the office door complete with captions or appropriate explanations before the 15th of each month. Winter pictures are especially needed.

NOTICE: AS YOU WERE WARNED IN LAST MONTH'S RAMBLER, the red bucket has been cleaned out. For those of you who didn't get here to claim your items--well, sorry Charlie. From now on, the bucket will be dumped on a regular basis--about every two months. If you wish an item returned, please enclose a self addressed and stamped envelope with your submissions.

TELEMARK SKIS FOR SALE: Evolution-Mountain Quest. Length-206 cm, bindings-Rottefella 3-pin, skins included. \$250.00/obo. Call Dave 533-8402.

WANTED: ROOMMATE TO SHARE Cottonwood Heights 3 bdrm home with single male. Double garage, fireplace, mountain view, 2 bath. \$425/mo including utilities. Call Rick 944-8399 evenings.

MOUNTAINEERING IN PERU: Mid June to mid July, 1997. Must have experience in glacier travel and be able to climb 45-50 degree alpine ice. For more information, contact William Thompson (359-8024) or John Veranth (278-5826).

STRESS REDUCTION THERAPIES offers:
Therapeutic Massage: \$35.00.

*CranioSacral Therapy: \$45.00.

*Applied

BioMechanics: \$45.00.

*excellent for chronic or acute pain that isn't eased by massage. **\$10.00 discount** for WMC members!

(Appointments only). Ask for Janice 466-7852 1518 S. 1100 E.

FOR SALE: SPORTING GOODS: Assorted backpacks and daypacks. Make offer

BOATS: 1.Tiga sailboard (intermediate), \$500.00

2.Fanatic sailboard (beginner), \$125.00

3.Canoe: Dagger "Caper" solo/tandem whitewater canoe with pedestals and float bags, \$550.00

4.Kayak: Hydra Mustang whitewater kayak with float bags and spray skirt, \$500.00.

SNOWMOBILES: 1983 John Deere Liquifier Snowmobile, \$1450.00

SKIIS: 1.Rossignol SM skis, 200 cm, with bindings and poles, \$35.00.

2.Ski boots: Salomon SX 82 (good boots), women's 7 1/2 (320), \$80.00.

3. Two pairs three-pin bindings, \$25.00/pair. Call Paul or Lynne (801) 637-1665.

FOR SALE: SNOWSHOE BINDINGS, Sherpa brand \$15.00

YAKIMA gutterless clips four Y-35 \$10.00

SNOWBOARD: Burton 165 cruiser with Burton bindings \$120.00

CLIMBING SKINS for skis. Voile snake skins \$30.00.

Call Justin 487-8349.

ARE YOU MISSING TUPPERWARE, EARRINGS, POTS 'N' PANS, OR CONTAINERS FROM THOSE FUN DANCES, BARBECUES, AND OTHER EVENTS YOU CAN'T QUITE REMEMBER???

CALL LORI/583-8133 - PLEASE! MY WMC STOREROOM/SPARE BEDROOM/ETC. IS BURSTING & I CAN'T FIT ANOTHER THINNNNNNGGGG!



DIRECTORS MESSAGES

Snowshoeing Coordinator Russ Pack

Hello snowshoers! Think snow. Its getting that time again to prepare for winter sports activities. With the Snowshoeing Committee nearly intact from last winter season, all we need is the soft white stuff to get the exercise and fun started.

The snowshoe tours scheduled for November and December will generally be designated "Tour Organizers Choice" since adequate snow base may not be available early in the season and meeting time and location will normally be 9:30am at Butler Elementary, unless stated otherwise. Last season we didn't get started until mid December.

We will continue the established ratings of NTD, MOD, and MSD with appropriate plus and minus signs to indicate activities between these ratings. Something new this season will be the addition of a pace designation, along with the rating, to indicate slower paced tours. For example, an NTD or MOD slow tour will be listed in a fashion to encourage participation by prospective new members or existing members wanting a slow pace as (NTD Turtle or NTD Penguin Waddle or MOD Crawler). Or, a symbol in place of the words.

As the season progresses, the Snowshoeing Committee will increase the number of moderate and more difficult tours and the difficult tours or any tours with exposure could have a requirement that beacons and shovels be carried.

Watch for further notices in the Rambler regarding snowshoe rental rates and availability, a show a tell demonstration on snowshoeing gear, and group parking.

Following is a list of the present Snowshoeing Committee members (still trying to add more) and their telephone numbers in the event a member knows a location that would make a good tour and would be willing to organize the tour. Give one of them a call!

Mark Jones	486-5354
Knick Knickerbocher	272-2485
Loraine Lovell	272-4601
Russ Pack	572-5653
Norm Pobanz	266-3703
Gretchen Siegler	461-0407
Holly Smith	272-5358
Tom Willis	485-0370

Knick Knickerbocher, a Sherpa Snowshoe owner, obtained the following information for you Sherpa snowshoers to supplement the information I supplied on Tubbs Snowshoes.

SHERPA SNOWSHOE CO.
REPAIR DEPARTMENT
444 SOUTH PINE STREET
BURLINGTON, WISCONSIN 53105
TELEPHONE 1-800-621-2277

ATTN TUBBS SNOWSHOE OWNERS

This past March 29th I received a letter from Tubbs Snowshoe Company informing me that their records indicated that I owned some Tubbs Snowshoes that could have potential problems with the "side retainer." The black, nylon side retainer holds the metal toe cord, or pivot rod, in position. I received the letter about the same time as one of my side retainers broke during a WMC snowshoe tour.

The letter specifically mentioned Katahdin and Sierra models produced during 1994. But, Tubbs stands behind all their products, so if you have experienced broken side retainers or if the retainers appear stressed or if you have other quality control problems and would like them to inspect your snowshoes, get in touch with Tubbs Snowshoe Company at the following telephone number and/or address:

Customer service department: 1-800-882-2748

or

Tubs Snowshoe Company

52 River Road

PO Box 207

Stow, Vermont 05672-0207

Tubs made all the shipping arrangements, had UPS pick them up at my door, made the fix, and returned them to my door, all at no cost and within two weeks.

Conservation Director Susan Sweigert

The dust has finally settled in the wake of Will McCarvill's departure, and I (Susan Sweigert, 521-8554) am the new conservation director, at least through the end of this term. Originally, Brad Yates and I planned to be co-directors. However, Brad is presently Hiking Director, and Mountain Club rules prevent serving in two directorships at once.

I'd like to draw your attention to several items in this issue. First, there is a tear-out-and-mail survey sheet asking for your input on which conservation issues you'd most like to see the Club involved in. Second, please look at the item about Monks Hollow (Diamond Fork). Diamond Fork Canyon is close to home - just a little south and east of Provo - and is threatened by a porkbarrel dam project. Third, volunteers interested in doing fieldwork and other things related to protection of Utah national forest lands are needed.

Finally, a last note concerning Will McCarvill's departure. I'd just like to mention one of his HUGE achievements - the organization and completion of a survey of all "roads" claimed under R.S. 2477 in the San Rafael Swell. Will initiated this project, held weekly meetings at his house from March through June 1995 with a cadre of around 30 volunteers, and helped develop the methodology for documenting the existence (or lack thereof) of these so-called "roads". The information, assembled by Will into 800 pages of photos, narratives and notes, was highly effective in combatting claims of Rep. James Hansen and others concerning the extent of roads in Utah's wildlands. Will's San Rafael project grew into the ongoing Sierra Club/SUWA joint effort to document county-claimed roads in wilderness state-wide.

Do You Love Utah's Forests?

If so, you should know about recent efforts to protect them. One is the effort, recently publicized in the **Salt Lake Tribune**, to set regulations on logging on privately owned lands. The other is a recently-revived effort to protect forests on public lands - the National Forests (NFs).

A group calling themselves the Forest Lands Working Group has begun to evaluate roadless and naturally-recovered areas of national forests in Utah wilderness protection. We need volunteers who can read maps and want to do fieldwork - even a weekend or two - to document the present condition of old roads and of various forest areas generally.

Our purpose is to gather such information in the next year or so, and to share it with the Forest Service as they begin to re-evaluate the lands they are mandated to manage.

The Forest Service (FS) is required to produce new management plans for all national forests about every fifteen years. New management plans for Utah's National Forests (Ashley NF, covering northeastern Utah/Vernal area; Wasatch-Cache NF, covering the northern Wasatch; Uinta NF, covering much of the Wasatch south to Mt. Nebo; Fishlake NF, over much of central Utah; the Manti-LaSal, covering the area east and south of Lake Powell; and the Dixie NF, running from Boulder Mountain south through the Pine Valley Mtns. west of Zion) are due beginning in 1999, at a rate of about one per year.

FS is already working towards the new management plans, and now's the time for concerned citizens to become involved. In preparing these plans, the Forest Service is required to re-assess its roadless areas for wilderness qualities, and to determine generally how to manage areas for the next fifteen to twenty years. But their assessment of roadless areas suitable for wilderness, according to an FS Wilderness Manager in the Regional Office in Ogden, will likely be done in the office - not in the forests themselves. FS will just look up information

about previous timber sales, gas and oil leases, etc., and draw a line around what's left. Maybe, maybe a little spot-checking will be done in the field.

But the criteria for assessing wilderness eligibility include the consideration of whether "return to a natural state" is possible (or has occurred), without requiring mechanical means. Forests can simply regrow - mechanical restoration is probably needed mostly for mining/drilling areas. If there are areas that have been reclaimed, the FS's office review won't find them.

Aside from wilderness designation, there are many issues as to what is the most sound management of forest areas. Protection of riparian areas from impacts by cows and sheep is essential for wildlife and game. Indiscriminate logging practices can foul streams with erosional runoff so that native fish, and even perhaps stocked fish, are harmed. And forests are important for Utah's biodiversity as well as for recreation.

Left to its own devices, the Forest Service may produce a plan that favors the extractive industries (grazing, logging, oil & gas) over other considerations. We - you and I - need to help keep them honest by field-checking.

If you want to get involved in volunteer work relating to Utah's national forests, please call me - Susan Sweigert - at 521-8554.

Monks Hollow/Diamond Fork Dam Threat

A storage reservoir has been proposed in Diamond Fork Canyon, as part of the Central Utah Project (CUP). The dam would inundate a Wasatch Front canyon that is a popular day-trip destination for biking, climbing and hiking, and which has a hot springs.

Why? To subsidize agricultural lands valued at \$50/acre at an amount of \$3953/acre or more (analysis by Sen. Paul Douglas in the late 1950s). But Juab County (where much of the water would be sent) has already hinted that once the water arrives, the county may apply for permission to convert the final use of the water to suburban and commercial development. Heather Stratford-Innes (who wrote the article in the Utah Sierran from which this item is condensed) says "I find it hard to interpret this proposal as anything other than a bid by landowners to transform rangeland worth less than \$1000 per acre into subdividable property worth \$10,000" - with Salt Lake County taxpayers footing the bill.

That's because citizens in Salt Lake County are especially privileged: they pay for the project twice. First they pay as federal taxpayers for the CUP. Then they pay as customers of the Salt Lake Water Conservancy District, which will eventually pay for nearly two-thirds of Utah's share of CUP costs.

But for those who love Diamond Fork Canyon, the superlative rip-off is the drowning of one of the most scenic stretches of the creek. The dam will fill the narrows just below Monks Hollow with a concrete structure nearly 200 feet high. Water will back up several miles along the main stem of the creek, as well as up side canyons. Several miles of stream fishery will be gone forever, as well as much scenic and unique landscape.

To oppose the dam project, make some phone calls or write letters. Let Salt Lake County commissioners Mary Callahan (468-3350), Randy Horiuchi (468-3387), and Brent Overson (468-3351) know you don't want the Monks Hollow Dam. If you live in Utah County, call Rep. Bill Orton, tell him the Monks Hollow Dam is an immoral waste of money, and ask him to repeal the authority of the Central Utah Water Conservancy District to build the dam. If you want to get more involved, call the Sierra Club (467-9294) or the Utah Rivers Conservation Council (539-1311).

(This item was condensed by Susan Sweigert from Heather Innes-Stratford's article in the Fall 1996 issue of the Utah Sierran.)



Conservation Issues Survey

(Background information: the Mountain Club is active on the Utah Wilderness Coalition (UWC), as one of four voting members. The UWC is presently focussing largely on wilderness protection for Bureau of Land Management - BLM - lands. BLM lands are distinct from National Forests, which for example include the Wasatch Range, the Uintas, the LaSal Mtns, the Pine Valley Mtns, and Boulder Mountain.)

From the following list, please indicate by number and in order of priority (1, 2, or 3) which 3 conservation issues you would most like to see the Mountain Club active in:

Wasatch Front canyons: protection of canyons, trailhead access, Bonneville Shoreline trail, helicopter skiing, etc.

Protection for Bureau of Land Management lands (mostly southern Utah and West Desert)

Protection for Utah National Forests (including the Uintas, the LaSals, the Pine Valley Mountains, Boulder Mountain)

Protection for Utah rivers; esp. Westwater Cyn, Virgin River, Diamond Fork, Bear River

Mountain biking access, trail use/maintenance, hiker conflicts

Wildlife issues (cougar & bear permits, native fish, etc.)

Other (please describe)

Additional Comments:

*Please fold, staple, stamp and mail to the Wasatch Mountain Club
1390 South, 1100 East, Salt Lake City, UT 84105*

EARLY SEASON XC SKI PACKAGES BUY BEFORE DECEMBER 1 AND SAVE \$\$\$

Skate/Classic Package

Choose from 3 model of skis\$210.00
 • Fischer MCS
 • Rossi Carbon Universe
 • Rossi Carbon Skate
 Salomon 9.1 SC Boot\$199.00
 Swix P.C. Techlite Pole\$40.00
 Salomon Equipe Skate Bindings\$62.00
 Mount & Base Preparation\$28.00

Retail Total \$539.00

PACKAGE PRICE
\$429.00

(Before December 1st)



Telemark Package

R.D. Black Canyon\$175.00
 Telemark Ski
 Merrell Flash or\$300.00
 Alico Integra Boot
 Voile 3 Pin Bindings\$32.00
 Mount & Base Preparation\$22.00

Retail Total \$529.00

PACKAGE PRICE
\$399.00

(Before December 1st)



Touring Package

Splitkein Lillehammer\$100.00
 Super Step Ski
 Salomon Country 4 Boot\$115.00
 Salomon Profil Auto Bindings\$35.00
 Excel Nova Poles\$18.00
 Mounting & Base Preparation\$22.00

Retail Total \$290.00

PACKAGE PRICE
\$199.00

(Before December 1st)



**LAYAWAY NOW FOR
 CHRISTMAS!**

SALT LAKE CITY, UTAH
WASATCH TOURING



702 East 100 South • Salt Lake City • 801-359-9361

**Wasatch Mountain Club
 1390 S. 1100 E. ste. 103
 Salt Lake City, UT 84105**

**Membership Director
Kyle Willaims**

KABOOM, KABOOM, KABOOM, KABOOM, KABOOM, KABOOM, KABOOM, KABOOM, KABOOM, KABOOM,
KABOOM, KABOOM, KABOOM, KABOOM, KABOOM, KABOOM, KABOOM, KABOOM, KABOOM, KABOOM,
KABOOM,!

That's a 21 gun salute to the fantastic people who work on the membership committee this year. Clarence Bertino, Marsha Hansen, and Marilyn Gull are some of the finest workers in this Club, and I salute them!!

Who do you think answers the office voice mail? Who prepares and mails out all the renewal forms each month? Who opens the hundreds of membership renewal forms and enters new data in the computer? They spend several evenings each month in the office doing the office support stuff, and they do a fine job.

Of course, its not all grunt and sweat. One the night we uncorked a bottle of wine and watched the lunar eclipse from the office porch. Marsha brings cookies on a regular basis, and reminds us that all work and no play makes Kyle a dull boy!

The next time you see these folks, please remember to thank them for their hard work and dedication. Without people like them the WMC would shrivel up and die. What a bummer that would be!.

Well, thanks again you three. Keep up th great work!.

Love, Kyle•

**Lodge Survey Results
Tom Walsh**

This report is the final tabulation of the Lodge Survey which was mailed to the membership on 20 AUG 96, and was formally presented at the general membership meeting on 9 OCT 96.

Section 1. Does it matter to you what the Board does with the Lodge?

<i>Yes</i>	<i>284</i>
<i>No</i>	<i>79</i>
<i>No opinion</i>	<i>25</i>

Section 2. Alternative 1: Keep the Lodge in the Wasatch Mountain Club.

149 votes

Alternative 2: Dispose of the Lodge with limited use by the Club.

116 votes

Alternative 3: Dispose of the Lodge with no use by the Club.

38 votes

Section 3. How many days in the last year have you used the Lodge?

141 members reported using a total of 392 days

Have you rented the Lodge for a personal party in the last 5 years?

17 rentals

How many Lodge service days have you worked in the last 5 years?

85 members reported working 382 days.

The response was rather good if compared to direct mail statistics. On the other hand, many members and Board Members bemoan the fact that the total response was:

31% of 1245 members (as of SEP 1996)

Under Section 2 Alternative 1, information was sought about the level of commitment and support the membership would provide to the Lodge. Check out the response below:

I will work _____ days each year on the Lodge.

107 members reported they would work 328 days per year. Average is 3 days per volunteer.

If necessary I will donate \$_____ each year to maintain the Lodge.

93 members reported they would donate \$5495 for an average of \$59 per year.

If necessary I will absorb an annual dues increase to a maximum of \$_____ for Lodge operation and maintenance.

116 members reported they would absorb an annual dues increase averaging \$29. The total dues increases would yield \$3354 annually.

The narrative comments were extensive and ranged from one end of the spectrum to the other. A very rough break-out of the content is:

Comments on business and management matters: 40%.

Comments pleading to retain the Lodge: 20%

Comments encouraging formation of a foundation and divesting the Club of title and retaining limited use: 20%

Other miscellaneous comments: 20%

A spreadsheet depicting all responses and containing all the narrative comments is available upon written request to Tom Walsh, c/o WMC Office.

Lodge Resolution Passed October 14, 1996

Whereas the Board of the Wasatch Mountain Club has solicited and received membership opinions regarding the ownership options for the lodge; and

Whereas the majority of survey responses received support and recommend that the Wasatch Mountain Club continue to maintain ownership of the lodge; and

Whereas Bill Hughes and Julie Jones have accepted the position of Lodge Co-Directors, and will oversee and direct the completion and construction of a restroom, water system, water and sewer connection needed to meet the terms of the Forest Service Special Use Permit;

Therefore, the Board of Directors of the Wasatch Mountain Club hereby resolves to maintain ownership of the lodge.

The option of creating a Historical Foundation for the Lodge will not be actively pursued at this time. Operation of the Lodge will remain the responsibility of the Wasatch Mountain Club. The governing goal of operation is to preserve the historical integrity of the building and the physical well-being of the structure, to provide opportunities for club members to use the lodge for social, civic, recreational, and cultural activities, to support and sponsor conservation and other appropriate groups thru lodge use, and to allow private use as stipulated in the Forest Service Use Permit to the extent needed to cover costs and replenish the capital expenditure fund to the level needed for future capital expenditures.

Lodge Directors

Julie Jones and Bill Hughes

The Directors of the Wasatch Mountain Club have been studying several options concerning ownership and improvement of the Lodge. As part of this process the Board wanted to know how the general membership felt about the lodge and the various options they were considering. A lodge survey was prepared and mailed to the members of the club. The Board of Directors greatly appreciated the responses to the survey and the many thoughtful suggestions that were received. The membership's interest in the Lodge was varied from tear it down and restore the land to those who felt the Lodge was an important and integral part of the Club. The two options of greatest interest to the members were the option of creating a Historical Foundation and the option of maintaining the current ownership. The Foundation would have some liability and tax advantages that the Club does not enjoy. However, the majority of members returning the survey felt that the Club should retain ownership of the Lodge.

The Board held a special meeting on October 14, 1996 and endorsed the majority position to retain ownership of the Lodge and to make the improvements that are a condition of our Forest Service Special Use Permit. These improvements include connecting to a water source, connecting to the sewer system and adding a bathroom and water system to the Lodge.

The Board also approved Bill Hughes and Julie Jones to serve as Lodge Co-Directors to fill the position recently vacated by Scott Schonrock. The Board wants to express appreciation for the service rendered by Scott Schonrock and Rich Osborne and for the progress they have made on the Lodge issues to date.

The Lodge Co-Directors will keep you informed regarding the progress of the Lodge improvements and will be soliciting your assistance as opportunities and needs arise. If you have any special concerns or ideas you feel should be considered please contact Julie (278-4753) or Bill (523-0790).

The item that appeared to be the largest expense, acquiring water, may be resolved at minimal cost with the offer of the Brighton LDS Girls Camp to allow us to connect to their existing water lines. The sewer poing of connection is just behind the Brighton Lodge and could come up the hill under the current path to the Lodge. The Goodro Annex may well become the home of a more permanent addition for the new bathroom. There is a lot of work to be done to get the necessary permits, easements, plans and contracts. Your help will be needed and solicited to help with Lodge improvements and maintenance. We will need help shoveling snow and cleaning the Lodge during the Winter months and would like to combine the work with an option of an overnight stay and pehaps an optional snowshoe or cross country tour so the weekend won't be all work and no play.

The overall goals of operation of the Lodge are expressed in the resolution passed by the Board. Julie and Bill will encourage other Directors to plan activities at the Lodge so the members can continue to use and enjoy the Lodge on a regular basis. The Club will also continue to encourage other persons and groups to use the lodge for a user fee. We hope the user fees will cover the increased costs over a reasonable period of time. If you or someone you know would like to schedule a date to use the lodge, contact Julie Jones at 278-4753.

The user fees are as follows:

Half day \$150
Monday thru Thursday (not including Holidays)
8AM to 5PM or 5PM to Midnight

One day: \$225
Two days: 450
Three days: 600

October Board Meeting

Summary of Minutes

Camille Pierce

Susan Swiegart was appointed as Conservation Director to fill the remaining term of Will McCarvill. Scott Schonrock resigned as Lodge Director. Julie Jones and Bill Hughes were approved as Co-Directors to fill the vacant position. Reda Herriott resigned as Rambler advertising coordinator.

Board members reported whether they will continue on the board in 1997. Positions to be recruited include: 1. officers: secretary. Trustees: one replacement needed. Activity Directors: boating, biking, membership.

Anti-virus software has been installed on the office computer thanks to Janis Huber.

Water purification and a connection point to a water source for the lodge were discussed. We agreed that we need year 'round water for the lodge. We are awaiting the outcome from a point of diversion hearing. To date: The membership survey results on the lodge are: doesn't matter: 80, WMC retains: 147, dispose via creation of an historical foundation: 113 and dispose: 38. A copy of the report will be available in the office.

Marilyn Bateman Earle Bickley was approved as a life member.

The group recognized the membership committee help of Marcia Hansen, Clarence Bertino and Marilyn for helping with data entry and opening the mail.

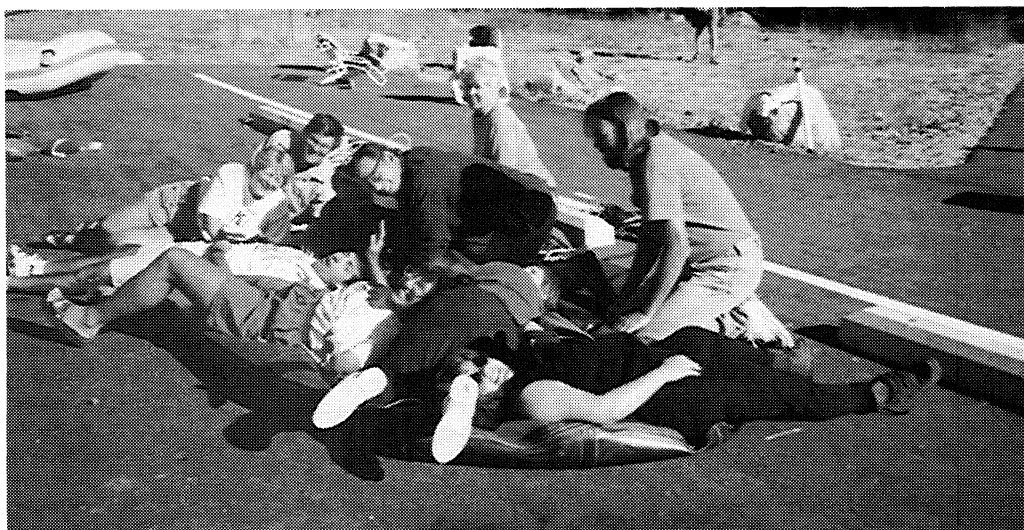
It was noted that Wasatch Mountain Club members Leslie Woods, Alexis Kelner, Trudy Healy and Mike Budig were interviewed by Catalyst magazine for an article on the club.

There are now 1244 members in the Wasatch Mountain Club.

WILL THE BOATING PROGRAM STAY AFLOAT?

Carol Milliken

NOT WITHOUT YOUR HELP! River permits have become increasingly more difficult to obtain. The more applications for permits the more chance to get the permits.



This is not an orgy? We are just trying to get rid of gas...err air.
Boaters on the Payette River Trip deflate their rafts for the trip home.

COME TO A PARTY. The permit planning party will be at Janice Huber House on December 5th at 7pm. Address 2922 Zenith Circle in Salt Lake. Janice will be glad to give directions, call her at 486-2345. Bring a dish for the pot luck, bring a pen or pencil, bring your river trip photos for this last season. Have a great time and find out how you can help the WMC boater get permits for next season.

WHAT IS IN IT FOR YOU? If you get a permit to share with the WMC boaters you will be able to float your favorite river at the time you choose. You will be revered in the minds of the rest of the boaters. You do not have to be the trip organizer! The boating coordinators will be happy to help you find someone to organize your trip for you.

DECEMBER 5 TH, PERMIT PARTY! DON'T FORGET.

THANK YOU TO MARK MCKENZIE FOR A GREAT IDEA! Mark's recent flat water canoe trip received great response from the members. Many had to be turned away because of no more space on the trip. Hopefully more trips like this can be planned for the future. Perhaps others know of great flat water runs for some future canoe trips.

Mark McKenzie has resigned as the canoeing coordinator. Thankyou Mark for your hard work, we all appreciate it and we will miss you as a coordinator.

BOATING WORK PARTY ON 2 NOVEMBER AT 9 AM. Please join us at the boat shed for cleaning up and storing away the boats.



WASATCH FRONT FORUM

WATER WORRIES ALONG THE WASATCH; SHOULD DIAMOND FORK WATER GO NORTH OR SOUTH?

Evening Panel Discussion, Slide Presentations and Audience Questions

Tuesday Evening, November 19, 1996 - 7:00 p.m.

First Unitarian Church, Meeting Hall, 569 South 1300 East, Salt Lake City
(This program is being held on the 3rd rather than the 2nd Tuesday of the month)

As part of the Central Utah Water Conservancy District - Central Utah Project (CUP), a proposed irrigation system, including a 3-mile-long reservoir (Monks-Hollow Dam) in Diamond Fork Canyon, would send water to southern Utah and Juab County farmers and residents at an estimated cost of nearly \$300 million. Supporters suggest the project is a necessary and prudent public works proposal. Critics claim the dam should be abandoned and that water targeted for these two counties should be diverted north, because Salt Lake County's future water needs greatly out-number those of its southern neighbors. Others feel the dam is economically indefensible and will damage Diamond Fork Canyon's natural resources including the popular hot springs. At the center of this controversy are pivotal questions as to what each county's share of tax burden is compared to water received from CUP.

Program participants include:

Lee Wimmer, Central Utah Water Conservancy District, Assistant General Manager

Dave Ovard, Salt Lake County Water Conservancy District, General Manager

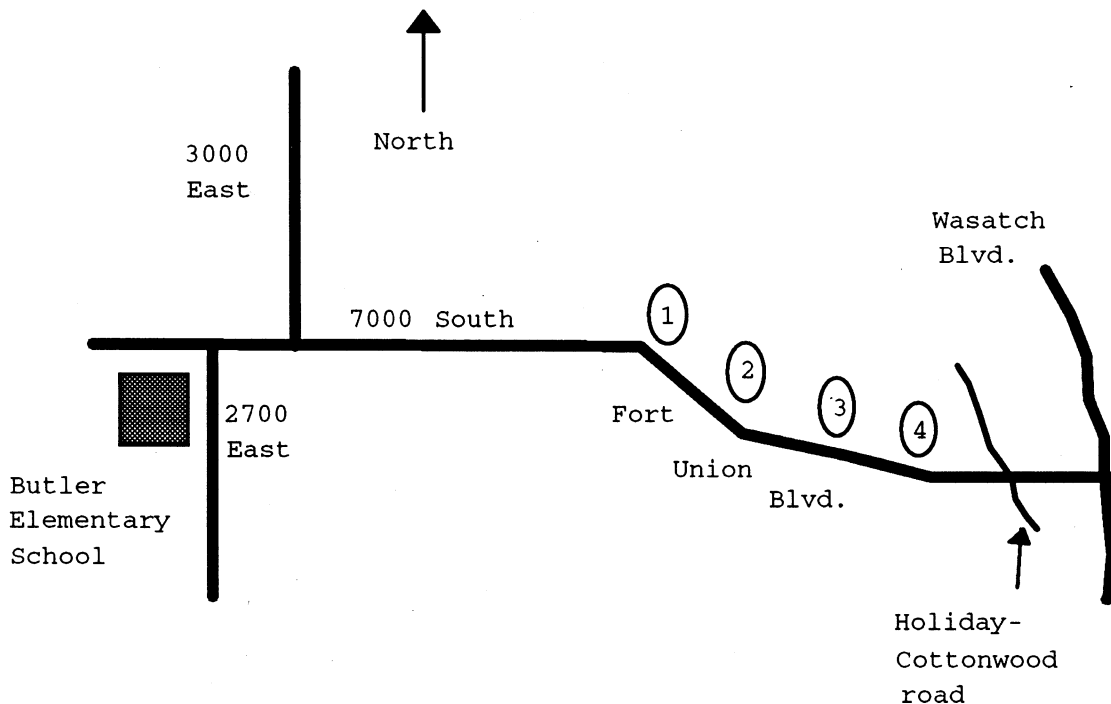
Dan McCool, U. of U. Prof. and editor of Waters of Zion: The Politics of Water in Utah.

Zach Frankel, Utah Rivers Council, Director

Program Note: Authorized by Congress in 1956, the Central Utah Project [CUP] was viewed as a series of projects that would move water from the Uinta Basin into the Great Basin, home to communities along the Wasatch. In 1992 the Central Utah Project Completion Act [CUPCA] gave Utah \$942 million in federal funds to complete the CUP and it also required counties within the CUP Districts to pay 35 percent of the cost on remaining projects. Two years ago, it was estimated that upon completion, the CUP would cost \$3.5 billion, with such expense attributed to living in the nation's second driest state. Nine Utah counties currently contribute property taxes to the CUP - Salt Lake, Wasatch, Utah, Duchesne, Uintah, Juab, Sanpete, Piute and Garfield.

The Wasatch Front Forum, now in its fifth year, will feature the 1996-97 meetings on the second Tuesday of most months during the six-month period of October through March. The "WFF" was created to provide a forum for Utahns to learn more about the natural history of the Wasatch Front and the legal, political and social issues facing public land managers and local governments. The Forum is supported in part by the Citizens' Committee to Save Our Canyons, The Utah Chapter of the Sierra Club, Friends of the Uintas!, Wasatch Mountain Club, and Great Salt Lake Audubon.

If you wish to comment on or participate in future forums or have your name placed on a mailing list, please write to P.O. Box 58671, Salt Lake City, Utah 84158-0671 or contact Stephen W. Lewis 272-2598 or Joyce Maughan 359-5900.



CAR POOL PARKING LOTS FOR SKIING AND SNOW-SHOEING

Butler Elementary School

Access the parking lot from 2700 East just south of 7000 South. (Fort Union Blvd.)

We do not have a guarantee that cars won't be towed from here in the event of snow.

Fort Union County Parking lots

The numbers are for the WMC. Don't expect to see any numbered signs, these are basically wide pullouts on the north side of Fort Union Blvd. County time restrictions are to be followed, NO PARKING FROM 10 PM TO 8 AM.

Lot #1

3220 East Fort Union Blvd. (7000 South)

This lot will hold an estimated 5 cars.

Lot #2

3360 East Fort Union Blvd. (7090 South)

This lot will hold an estimated 10-15 cars.

Lot #3

3420 East Fort Union Blvd. (7140 South)

This lot will hold an estimated 7 cars.

Lot #4

3600 East Fort Union Blvd. (7225 South)

This lot will hold an estimated 10-15 cars.

TRIP TALKS

SAND DUNE SKIING October 12 and 13, 1996 Muomar Ben Dhouver

It was the best of times. It was the worst of times...Naw. That's too complicated.

In the beginning was the Word. And the Word was...Naw! That's been done.

I will plagiarize my own words from last year ... Allah is good. Allah has provided for the benefit of mankind. Allah has provided snow to ski in the mountains and sand dunes to ski in the deserts. Even in the land of Idaho, the hand of Allah is manifest in the Bruneau Sand Dunes State Park upon which telemark turns may be cut.

Trip leader Sulliman The Sillyman, a most estimable skier and thrill seeker, arranged for the 2nd annual Bruneau Dunes ski trip. Allah arranged for the skies to be clear, warm, and sunny. Allah calmed the winds so the sand would lie in stable slopes as fine as Utah powder. The dunes could not have been more agreeable for an opening event of the ski season.

Weather could not have been better, but the same could not be said for the participants. The grit of a gusty sirocco wind has never faced such a scrofulous lot of desert rats. Hassim The Unnamed - his smoothly evolved telemark style contrasted with the sardonic words on his tongue. Akbar The Insatiable had his hands full grappling with his dog Double who turned mischief faster than the turns of a whirling dervish. Sulliman The Sillyman - given the choice between skiing and breathing he would be last seen cutting turns as he died happily. Muomar Ben Dhouvre - his poles are crooked and so are his telemarks. Sheik Yer Bouti - a man whose feet keep going long after common sense says to stop and go back. Lustivia The Lively - how did a nice person like her get hooked up with these thugs? Fatima The Short - smooth as the zephyr and so short she could ski under a double camber ski.

Our skis took a suitable grip on the sand and climbed like skins on snow. The first run was on the closest north facing slope where Sulliman tested his knee which recently underwent surgery (caused by twisting around an ottoman while reaching for a TV remote). The test went well so we advanced to the high point on the west facing slopes where the 440 foot dune sloped down at 30 degrees, and offered the most optimum runs imaginable. Fatima, Hassim, and the Sheik, were new to sand skiing, but needed no advice. They pointed 'em downhill and hammered out turn after turn after turn. Skiing was great! We couldn't stop chuckling. However due to overly rich living in the bazaar, plus blooming blisters on feet not yet hardened to ski boots, we did just 5 or 6 runs then returned to camp.

Addressing each other by our Arabic names, we set about tasks of showering in the hot Bruneau solar showers, fixing dinner, and imbibing strong drinks. Akbar offered shots of Jim Beam. Muomar offered Wild Turkey. Sulliman would have us throw back shots of some kind of poison called Heritage Canyon or Horrible Concoction or something like that. After dinner and lots of strong drinks, the initiation ceremonies for the novices were conducted. The details may not be revealed to non-sanders, but it can be said that it involves fire and flying leaps.

Sunday morning was cool and clear and perfect for more runs. Sheik Yer Bouti got off 28 turns on the west facing slope, but they were ugly. Fatima posted the women's record descent with a nifty time of 1 minute 12 seconds. Muomar might have set a men's record but he was pushed by Fatima and tumbled into an endo-biff which ruined any possibility of a record. Sulliman was up to speed on knees as good as new. Hassim set a personal best of 19 linked telemark turns. Lustivia was amazed at sand skiing and repeatedly muttered, "Whose loony idea was this?"

Praise Allah! sand skiing grows and gains new enthusiasts every year. Participants included: Hassim (Pete Mimmack), Akbar (Ridge Williams), Muomar (Tom Walsh), the Sheik (Brad Yates), Fatima (Leslie Woods), Lustivia (Gloria Leonard) and trip organizer Sulliman (Edgar Webster).

Broads Fork Twins September 29, 1996

We all met at Karin and Dennis Caldwell's house, at the base of Deaf-Smiths Canyon at 7 AM. This is one of the few big hikes that is reasonable to start from Wasatch Blvd. So after waiting for everybody to collect we go started at about 7:15 AM from the Caldwell's house.

The morning was warmer than normal for the end of September but was still pleasant. We started with seven people and Tybolt the Caldwell's German Shepherd that was only 9 months old which is about 5 years in dog years. At about 40 minutes into the hike we came to the first fault and had to scramble about 75 feet. Tybolt made it about half way up the scramble and lost his confidence so Karin decided to turn back and take Tybolt back home.

We finally got into the sun half way up. The ground had frost on it but the sun felt warm and make the fall colors very bright. So we took a small break there and enjoy the trees. As we were about one hour further up the canyon we had a small mishap.

As usual Dennis was moving quickly ahead and disturbed a yellow jacket nest but was too fast to bothered by them. But as we followed Cassie gave out a yell and I was looking for the rattlesnake. What had happened was that Cassie got stung in the face by one of the yellow jackets. It smarted for a little while but didn't slow her down any.

We got up to the summit ridge without any more problems. So everybody but one made it to the top. Coming down went smoothly but seemed longer than the way up. Participants were leader Dennis Caldwell, George Westbrook, David Armitage, Bill Wallace, Cheryl Soshnick and Cassie Badowsky. A good time was had by all.

A FALL FIKKAN HIKE Ann Wechsler

Phil Fikkan was scheduled to lead a hike to Notch Peak in the Uintas, but concerns about the snow level prompted him to head for Stansbury Island instead. An excellent choice - it was a clear day and I wanted to see the results of the fire that had swept the south end of the island the previous weekend.

We climbed to the bike trail on the bench, encountering only one family camped in a gulch by the road, and sporadic rifle shots in the distance. Remember, this is the predatory season! Evidence of fire power was everywhere.

Apparently there had been little or no wind fueling the weekend fire because it did not jump the narrow trail. Whole cheat fields on one side were fully scorched while the other side would be blanketed with sun flowers (a typical result of profoundly disturbed land). Farther up in the junipers, the fire wound a tortuous path, consuming one tree completely and leaving another untouched. Whatever the terrain, we saw small bushes left standing like dirty teacups in perfectly round black saucers.

The day was perfect for hiking with a clean, bracing wind and a small congenial group - small enough to carpool in one van. As we ate lunch in a protected spot on the ridge, the autumnal equinox arrived uncelebrated. Except for my announcement in the title above, I prefer to keep it that way, long enough to prolong our Sunday sojourns into the desert, perhaps even until December.

Phil led Jack Curtis, Joyce Fikkan, David Nardinger, Irina Verukitskaya, and myself along the trail, through the woods, down the craggy spine to the road, and across a season on September 22nd, a splendid Sunday on Stansbury.

Sugar Loaf Peak Hike Saturday, August 17, 1996 Randy Long

Sugarloaf Peak was a border-line beginner-intermediate hike and due to its very spectacular scenery and it's 11,051 foot elevation this peak is one of my favorite hikes. Little Cottonwood known to hikers as a canyon of superlatives and Sugarloaf Peak is definitely one of them. We met at the mouth of the canyon and carpooled to Albion Basin and started hiking.

The other participant was fairly new to Utah so I gave her an introduction to the Wasatch Mountain Club, hiking in general, and conservation issues. We enjoyed our hike via Cecret Lake and Germania Pass. Then we went up the summit ridge to the peak. We had a leisurely lunch amid all that spectacular scenery before returning back to the trailhead.

White Fir Pass on to Bowman Overlook

Linda Gurrister

The Labor Day weekend lured a lively group of hikers for a pleasant trek to White Fir Pass in Millcreek Canyon. Twenty four stalwarts enjoyed the NTD hike up a shady trail to the pass. It was a sunny cool day and the group was barely warmed up when we reached our destination. So the entire entourage went on to the Bowman overlook; even hikers brand new to the club were up for a longer hike. The views a Bowman were spectacular, teasing us all with the beginning fall colors dotting the mountainside. We lingered for a very social lunch break at the top. Everyone seemed to have enjoyed the holiday hike.

Participants were: Cathy Benson, George Westbrook, Cassie Westbrook, Abbie Westbrook, Hank Winainer, Tom McCabe, Adele Breeden, Mary Benson, Duane Johnson, Duane Call, Linda Gurrister, Yenta Kaufaman, Matt Dally, Mary Fox, Helen Evans, Susan Trinkle, Margaret Strickland, Nancy Ivy, Heather Cummarsti, Lorraine Miner, Gary Myers, David Huberman, and Brenda Winawer. The trip organizer was Uli Hegewald.

Kessler Peak Hike

2 September 1996

Ten Hikers took part in this Labor Day event, a hike that started a bit earlier, 7:30 am, than most hikes of similar length and difficulty. However, it was the consensus of the group that the earlier hour offered numerous advantages: it allow more time to pause at points of interest, returned participants to their cars and, presumably, their homes with time to occupy in other interests before the day was over, and it put the group on the trail in a pleasant time of day when the world is still cool, fresh and friendly.

This was a loop hike, going up the Argenta trail and returning via the Kessler North trail. It was also an historical hike, as the leader related history of the trails and the surrounding mountains, as well as drawing attention to points of interest. The lower part of the Argenta trail dates to late 1854 when it was a logging slide for Mill A, under construction in the canyon bottom. It was latter used by the miners from the Carbonate Mine, who connected the upper end of the slide with their mine by a crude road that exists today only as a route. When the group reached the mine, the road from Cardiff Fork up to the mines could be seen on the east side of the pass. Old trails connecting the various tunnels of the Carbonate group were pointed out, and one of them was used for a brief side trip to a spectacular view of upper Mineral Fork. The peak was gained before noon, where considerable time was spent enjoying the views, as well as lunch. Another brief detour was made after leaving the peak, this time to the Kessler North peak - also known in by-gone days as Read's Peak - where the visitors were treated with a grand view of canyon, as well as the more recently active Argenta slide area, where an avalanche went down to cover the Big Cottonwood road last winter. It could be seen that the slide originated high in a chute on the northwest side of Kessler Peak, and took down trees from the upper reaches of the basin all the way down to Big Cottonwood Creek. The hike ended with a pleasant descent through forested slopes into Cardiff Fork.

Those taking part were Larry Nillsen, Michael Barry, Linda Metke, David Rumbellow, Edgar Webster, Mel Bashore, Karen Perkins, Dan DeMarco, and co-organizers Allene and Charles Keller.

Mineral Fork Hike

September 21, 1996

Martin McGregor

The hike was changed form Honeycomb Fork to West Mineral because of excessive snow. Four persons participated: Conley Adams, Mary Fox, Martin McGregor, and Scott Patterson. It was a brisk day in the shade and warm in the sunlight. Two deer were seen as we approached the Leprechaun cabin, so called because of it's three foot door height, and West Mineral basin. Where is the Leprechaun cabin? It's on the way to West Mineral Fork. Where is West Mineral? It's a short way up Mineral Fork. Some lunch talk: Conley is retired from Kennecott, Mary is working on a masters degree in special ed, Martin is working in the computer department of UPL, and Scott is working someplace in a gold refining company. There were some ideas about trail maintenance of this fork and the other old mining forks.

WASATCH MOUNTAIN CLUB (WMC)

Applicant Agreement, Acknowledgment of Risk, and Release from Liability

VOLUNTARY PARTICIPATION: I acknowledge that my participation in any WMC activity is voluntary. No one is forcing me to participate.

ASSUMPTION OF RISK: I am aware that WMC activities involve risks, and could result in injury, illness, death, and damage or loss of property. These dangers include but are not limited to: the hazards of traveling in remote areas without medical services or care, the forces of nature, the inherent dangers involved in participation in sports, wilderness travel, and social activities, and the negligent actions of other persons or agencies. I understand that all activities should be considered "exploratory", with the possibility of unexpected conditions and route variations. The WMC is not, nor does it provide, a professional guiding service. In order to partake in the enjoyment and excitement of WMC activities, I am willing to accept the risk and uncertainty involved as being an integral part of the activity. I acknowledge this risk, and assume full responsibility for any and all risks of injury, illness, death, or damage and loss to my property.

I verify this statement by placing my initials here: _____

PREPARATION: I understand that it is my responsibility to evaluate the difficulty of any activity I participate in, and decide whether I am prepared by having the experience, skill, knowledge, equipment, and the physical and emotional stamina to safely participate.

RELEASE OF LIABILITY AND PROMISE NOT TO SUE: I agree that I, my heirs, and personal or legal representatives hereby do release and hold harmless from all liability, and promise not to bring any suit or claim against, the Wasatch Mountain Club, its leaders, directors, agents or representatives for any injury, illness, death, or damage and loss to property resulting from my participation in any WMC activity even if they negligently caused the injury or damage.

LEGAL FEES: Should it become necessary for WMC, or someone on their behalf, to incur attorney's fees and costs to enforce this agreement, I agree to pay WMC reasonable costs and fees thereby expended, or for which liability is incurred.

INSURANCE: I certify that I have sufficient insurance to cover any bodily injury or property damage that I may incur while participating in any WMC activity. If I have no such insurance, I certify that I am capable of paying for all such expenses and liabilities.

My signature below indicates that I have read this entire document, understand it completely, understand that it affects my legal rights, and agree to be bound by its terms. I am at least 18 years old.

Signature _____ Print name _____

Address _____

Phone _____ Date _____

WITNESS: I certify that _____ has alleged to me that he/she has read and understands this document.

Witness signature _____ Print name _____

Address _____

Phone _____ Date _____

Please Complete Both Sides

Wasatch Mountain Club

New Member/Reinstatement of Previous Members Application

Do Not Use this Form for Regular Annual Membership Renewal

Please read carefully and fill out completely.

Name(s) _____
(First) (Last)

Address _____ City _____ State _____ Zip _____

Check phone number ☐ Residence: _____ Other ☐ Do not print my name/phone in membership list.
to print in Rambler Options: ☐ Do not list my name in lists given to Board
membership list: ☐ Work: _____ approved conservation/wilderness organizations.
e-mail: _____

I am applying for: _____ Check one: _____
_____ New Membership _____ Single Birth date(s) _____
(Please complete activity section.)
_____ Reinstatement _____ Couple _____
_____ Student (30 years or younger)

Remit: \$35.00 for single membership (\$30.00 dues, plus \$5.00 application fee)
\$50.00 for couple membership (\$45.00 dues, plus \$5.00 application fee)

Enclosed is \$ _____ for one year's dues and application fee. Checks/money orders only. Make checks payable to Wasatch Mountain Club. Do you wish to receive the Rambler (the Club publication)? ☐ Yes ☐ No
(Subscription price is NOT deductible from the dues.)

Activity Section

You must complete two Club activities (other than socials) to be considered for membership. The activity dates must have been within one year of the application.

<u>Qualifying Activity</u>	<u>Date</u>	<u>Signature of Recommending Leader</u>
1. _____	_____	_____
2. _____	_____	_____

I found out about the WMC from _____

Mail application and check to: Membership Director
Wasatch Mountain Club
1390 South 1100 East, Suite 103
Salt Lake City, UT 84105-2443

Leave Blank—For Office Use Only

Receipt/Check # _____ Amount Received\$ _____ Date Received _____ By _____

Board approval date _____

ACTIVITY SURVEY

WOULD YOU LIKE TO LEAD?

All of the Club's activity leaders are volunteers. You can be a leader too—just check off the activities you want to lead, and we'll give you a call. Help your Club and have fun too!

- Hiking:** ☐ easy day hike ☐ moderate day hike ☐ advanced day hike ☐ car camp
 ☐ backback
- Boating:** ☐ trip leader ☐ instruction ☐ equipment ☐ sailing
- Skiing:** ☐ NTD tour ☐ MOD tour ☐ MSD tour ☐ out of town trip
- Climbing:** ☐ Wasatch climb ☐ out of town trip ☐ winter mountaineering
- Bicycling:** ☐ road bike tour ☐ mountain bike tour ☐ camping tour
- Other outings:** ☐ snowshoe tour ☐ caving ☐ other

WOULD YOU LIKE TO SUPPORT?

The Club also depends on volunteers for all the rest of its work. Some of this work is critical to the day-to-day functioning of the Club; some of it is important to our community; some of it is just fun. You can let us know how you'll help by checking off activities below.

- Conservation:** ☐ air and water quality issues ☐ trailhead access ☐ wilderness
 ☐ telephone tree ☐ trail clearing
- Socials:** ☐ social host ☐ Party assistance ☐ lodge host
- Rambler:** ☐ word processing ☐ mailing ☐ advertising ☐ computer support
- Lodge:** ☐ general lodge repair ☐ skilled lodge work
- Information:** ☐ public relations ☐ membership help ☐ recruiting ☐ instruction

Would you like to participate on an activities committee? Which one?

Is there a special trip or activity you would like to lead?

What phone numbers can we use to reach you?

THE WASATCH MOUNTAIN CLUB

Membership applicants must participate in at least two Club outdoor or service activities. Yearly dues are \$30 single, \$45 couple, \$5 application and reinstatement fee.

GOVERNING BOARD 1995-96

President and Directors

President	943-1871	Linda Kosky
Vice President	273-8076	Kyle Williams
Secretary	272-4552	Camille Pierce
Treasurers	969-2825	Bob Janzen
Membership Dir.	273-8076	Kyle Williams
Hiking Directors	583-1205	Brad Yates
Boating Directors	882-4108	Carol Milliken
Conservation Dir.	521-8554	Susan Sweigert
Entertainment Dir.	583-8133	Lori Ball
	973-7984	Patti O'Keefe
Lodge Director	523-0790	Bill Hughes
	278-4753	Julie Jones
Mountaineering Dir.	486-4787	Sam Albano
Publications Dir.	277-4652	Kathy Anderson
	521-6040	Rob Merritt
Winter Sports Dir.	969-5842	Tom Walsh
Bicycling Dir.	486-0909	Rick Kirkland
	968-8494	Doug Murray
Information Dir.	467-7558	John Shavers

TRUSTEES

1993-97 term	942-6065	Karin Caldwell
1994-98 term	484-2338	Leslie Woods
1995-99 term	943-8500	Phyllis Anderson
1996-00 term	278-5826	John Veranth
<i>Emeritus</i>	355-7216	O'Dell Petersen
<i>Emeritus</i>	277-6417	Dale Green

COORDINATORS

(under boating director)

Canoeing	<vacant>
Kayaking	<vacant>
Sailing	649-6805 Vince DeSimone
Rafting	322-4326 Janet Embry
Boating Equ.	487-7072 Vera Novak
Boating Instr.	<vacant>

(under winter sports director)

Snowshoeing	572-5653 Russ Pack
Ski Touring	394-6047 Brian Barkey

(under bicycling director)

Mountain Biking	298-1814 Tim Boschert
-----------------	-----------------------

(under entertainment director)

In-Line Skating	Dave Vance
(under information director)	
Adopt-A-Highway	583-9611 Carl Warberg
Webmaster	966-6041 Tony Ackerman

(under publications director)

Commercial Adv.	484-8271 Reda Herriott
Rambler Mailing	265-8490 Laila Hughes
	943-0244 Randy Long

(under lodge director)

Lodge User Rep	<vacant>
----------------	----------

(under conservation director)

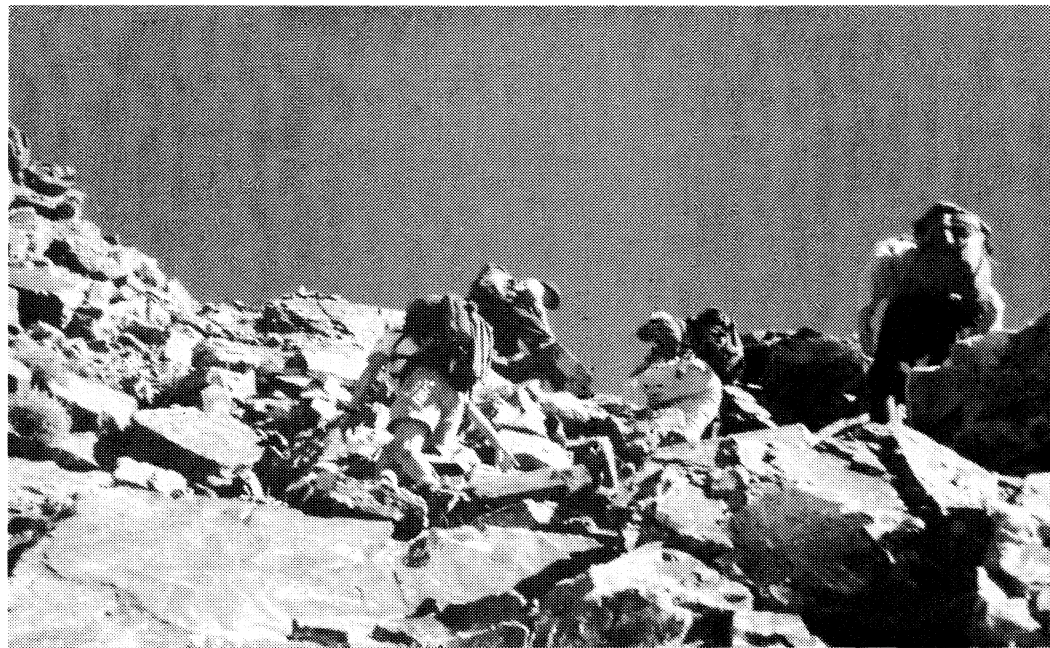
Trails Issues	364-5729 Chris Biltoft
---------------	------------------------

Commercial Advertising

The Rambler encourages and supports your products and services through pre-paid commercial advertisements. Advertisements must be camera ready and turned into the advertising director no later than the 15th of the month prior to publication. Prepayment is necessary for single month advertisements with invoicing and net 30 for repeat advertisements. Contact the Commercial Advertising Coordinator for information or to place an ad.

Full Page	\$95.00	7" x 9"
Half Page	\$50.00	7" x 4.5" Horizontal 3.5" x 9" Vertical
Quarter Page	\$30.00	3.5" x 4.5" square 7" x 2.25" horizontal 2.25" x 9" vertical
Business Card	\$15.00	3.5" x 2"

BACK COVER PHOTO: The end is in sight



WASATCH MOUNTAIN CLUB
1390 South, 1100 East
Salt Lake City, UT 84105

PERIODICAL CLASS
POSTAGE PAID
SALT LAKE CITY, UT