



The Rambler

February 1998
Volume 75 Number 2

	Managing Editors
	Kathy Anderson
ADVERTISING	Jaelene V. Myrup
CLASSIFIED ADS	Sue deVall
MAILING	<vacant>
PRODUCTION	Kathy Anderson

The *Rambler* (USPS 053-410) is published monthly by The WASATCH MOUNTAIN CLUB, Inc., 1390 S., 1100 E., suite. 103, Salt Lake City, UT 84105-2461. Telephone 463-9842. Subscription rates of \$12.00 per year are paid for by membership dues only. Periodicals postage paid at Salt Lake City, Utah.

POSTMASTER: Send address changes to *The Rambler*, Membership Director, 1390 S, 1100 E., Salt Lake City, UT 84105-2443. CHANGE OF ADDRESS: This publication is not forwarded by the Post Office.

The right is reserved to edit all contributions and advertisements and to reject those that may harm the sensibilities of WMC members or defame the WMC.

Copyright 1997 Wasatch Mountain Club

Office Telephone 463-9842
 Address 1390 S. 1100 E., Ste 103
 Salt Lake City, UT 84105-2443
 WMC Home Page
www.digitalpla.net/~wmc

PROSPECTIVE MEMBER INFORMATION

Applicants must attend two official WMC activities other than socials. Activities are listed in *THE RAMBLER* which is the official publication of the Wasatch Mountain Club, published by and for its members. Prospective members may receive *THE RAMBLER* for two months by writing the Membership Director at the above address and enclosing a check for \$5.00 payable to the Wasatch Mountain Club. (There is a \$10.00 charge for returned checks.) An application form may be found in the center of *THE RAMBLER*. Ask the activity trip organizer to sign your form after completing the activity.

MEMBERS: If you have moved, please call the WMC office or send your new address to the Membership Director. Allow 45 days for address changes. If you did not receive your *RAMBLER*, contact the Membership Director to make sure the WMC has your correct address. Replacement copies are available, while they last, at the WMC office during office hours.

TO SUBMIT AN ARTICLE or PHOTOGRAPH: Articles should be on diskette, MS/DOS or and preferably in Microsoft Word or WordPerfect form. Label the diskette with your name and identify what file(s) are submissions. Enclose a hard copy in case your diskette cannot be read. Mail submissions to Publication Director at the office address, or hand deliver them

to the WMC office. Leave hand deliveries in the **Blue** box outside the door. The deadline is 6:00 PM on the 15th of the month. Photos of all kinds, B&W and color prints, and slides will be accepted. Make sure that the photo is labeled with the photographer, date, and names of people. Unless a stamped, self-addressed envelope is provided, returned submissions will be available in the **Red** box outside

WMC Purpose

(Article II of the WMC Constitution)

The purpose shall be to promote the physical and spiritual well being of its members and others by outdoor activities: to unite the energy, interests and knowledge of students, explorers and lovers of the mountains, deserts and rivers of Utah; to collect and disseminate information regarding the Rocky Mountains in behalf of science, literature and art; to explore and picture the scenic wonders of this and surrounding states; and to foster awareness of our natural areas including their plants, animal and bird life.

Cover Photo: Moonlight photo of Bald Mountain in the Uintas by Bob Grant



Chris Venizelos
 Sales Executive

WARDLEY BETTER HOMES & GARDENS

4455 South 700 East, Ste. 104 • Salt Lake City, Utah 84107
 Office: (801) 266-4663 • Residence: (801) 364-4544
 Fax: (801) 265-0704

TECHCITEMENT!

Kirkham's is Your Store for Excellent Selection and Qualified Advice on TECHNICAL BACKCOUNTRY WINTER GEAR!

Rainey Designs Super Loop Binding \$99.00
This easy-to-use binding offers more control over your skis for immediate improvement in your skiing!

Black Diamond Resolution - \$379.00
If "one turn is never enough" the Resolution is the solution.

Tua Savage MX - \$279.00
All-around wide board - Maximum value and performance!

Trak Outland XT - \$170.00
Wide dimension and metal edge for touring!

Atomic Betacary TM.26 - \$456.00
Highly versatile for Telemark Freeriders, tours, variations.

Life Link Avalanche Probe \$76.00

Northern Lites Backcountry Snowshoe
Weighs only 40 oz.!

\$260.00

Black Diamond t2 - \$469.50
Equally at home driving fat boards in-area or hiking for turns. Men's & Women's

Garmont Veloce \$450.00
Men's & Women's
Flexible, great fitting boot for high comfort on long skiing days.

Kirkham's®
outdoor products

3125 South State Street 486-4161
Monday-Friday 9:30 to 9:00 Saturday 9:30 to 7:00 Sunday 11:00 to 5:00

THANKS TO ALL WHO VOLUNTEERED TO SERVE AS A MEMBER OF THE GOVERNING BOARD FOR 1998-1999.

FOLLOWING IS THE SLATE OF CANDIDATES THAT WILL BE PRESENTED TO THE MEMBERSHIP FOR VOTE AT THE GENERAL MEMBERSHIP MEETING ON FEBRUARY 18, 1998.

***THE WASATCH MOUNTAIN CLUB
GOVERNING BOARD 1998-99***

<i>PRESIDENT</i>	<i>LINDA KOSKY (INCUMBENT)</i>
<i>VICE PRESIDENT</i>	<i>APPOINTED BY THE BOARD</i>
<i>SECRETARY</i>	<i>JANICE GILL</i>
<i>TREASURER</i>	<i>KATHY MCKAY</i>
<i>MEMBERSHIP DIRECTOR</i>	<i>ROBYNN SISAM (INCUMBENT)</i>
<i>HIKING DIRECTORS</i>	<i>RANDY LONG or CHERYL SOSHNIK and MOHAMMAD ABDULLAH (co-directors)</i>
<i>BOATING DIRECTOR</i>	<i>VERA SONDELSKI (INCUMBENT)</i>
<i>CONSERVATION DIRECTOR</i>	<i>SUSAN SWEIGERT (INCUMBENT)</i>
<i>ENTERTAINMENT DIRECTOR</i>	<i>LINDA PACK</i>
<i>LODGE CO- DIRECTORS</i>	<i>JULIE JONES (INCUMBENT) BILL HUGHES (INCUMBENT)</i>
<i>MOUNTAINEERING CO-DIRECTORS</i>	<i>ALAN LINDSAY (INCUMBENT) FRANK STOCK</i>
<i>PUBLICATIONS</i>	<i>BOB JANZEN</i>
<i>WINTER SPORTS</i>	<i>TOM WALSH (INCUMBENT)</i>
<i>BICYCLING DIRECTOR</i>	<i>TIM BOSCHERT (INCUMBENT)</i>
<i>INFORMATION DIRECTOR</i>	<i>CAROL COULTER (INCUMBENT)</i>
<i>HISTORIAN</i>	<i>MIKE TRESHOW (INCUMBENT)</i>
<i>TRUSTEE</i>	<i>JOAN PROCTOR TERM 1998-2002</i>

**NOMINATING COMMITTEE MEMBERS: CRAIG MCCARTHY-CHAIR-467-3018
URSULA JOCHMANN-484-9820
HOLLY SMITH-272-5358**

GENERAL MEMBERSHIP MEETING

AND ELECTIONS

WEDNESDAY, FEBRUARY 18, 1998

7:00 P.M.

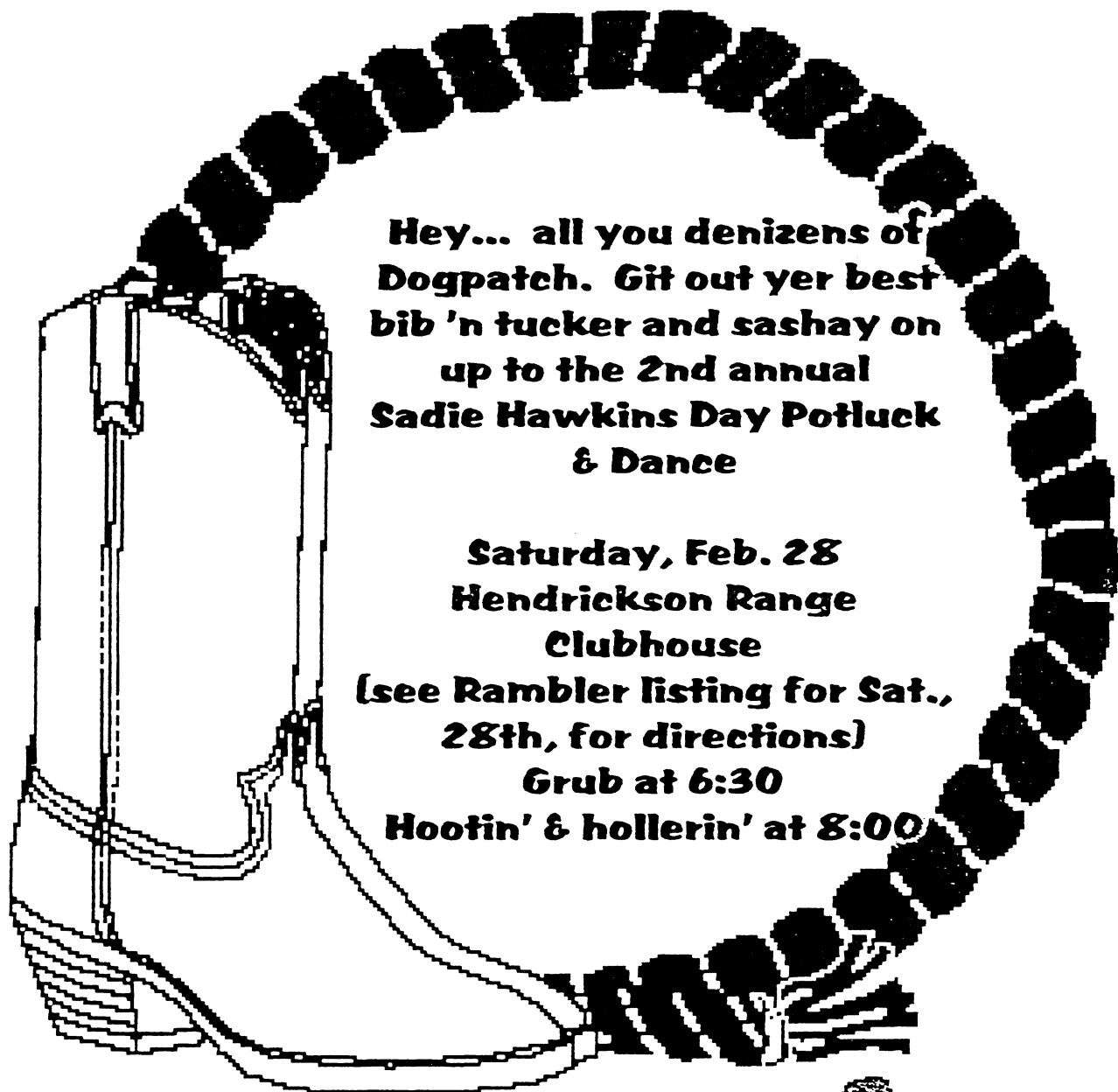
**ZION LUTHERN CHURCH
1070 SOUTH FOOTHILL BLVD.**

**WE WILL VOTE FOR THE CANDIDATES WHO HAVE VOLUNTEERED TO SERVE ON
THE GOVERNING BOARD FOR THE 1998-1999 TERM OF OFFICE AND FOR ONE
TRUSTEE FOR THE FOUR YEAR TERM OF 1998-2002.**

PLEASE PLAN TO ATTEND. YOUR PRESENCE IS NEEDED!!

**WE WILL HAVE A SPEAKER TO PRESENT A PROGRAM OF INTEREST TO ALL CLUB
MEMBERS.**

LIGHT REFRESHMENTS WILL BE SERVED.



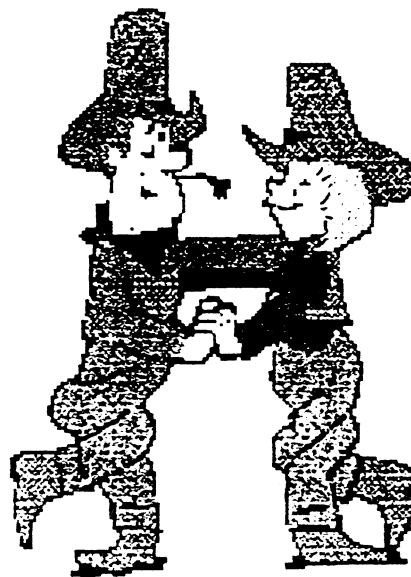
**Hey... all you denizens of
Dogpatch. Git out yer best
bib 'n tucker and sashay on
up to the 2nd annual
Sadie Hawkins Day Potluck
& Dance**

**Saturday, Feb. 28
Hendrickson Range
Clubhouse
(see Rambler listing for Sat.,
28th, for directions)
Grub at 6:30
Hootin' & hollerin' at 8:00**

**Ps-s-st! All you single gals...
Don't forget, this is yer chance to
snag a husband!**

**Remember our motto: If you kin
catch 'em, you kin keep 'im!!**

**Cheap weddins performed on the
spot by Marryin' Sam.**



BULLETIN BOARD

WMC LODGE

AVAILABLE FOR RENTAL USE

The WMC Lodge can be rented on a full or half day basis. Full day rate is \$250. Contact Julie Jones (1-801-278-4753) for information.

TENNIS NETWORK

We are a group of WMC members that play tennis regularly. Our levels range from 2.5 - 4.0. If you are interested in playing, please contact Jeri at 561-3777.

International Folk Dancing every Monday evening at the University of Utah in the East Ballroom of the Student Union. Teaching from 7:30 to 8:15 PM. No partner needed.

BOATERS

Not yet time to dust off the paddles, but it is the time to plan for an action packed river season 1998! Bring your permits, your ideas and your volunteer spirit to our Planning Party. March 7 @ 7:00 pm. Light hors d'oeuvres pot-luck. Zion Lutheran Church Basement, 1070 S Foothill. For any questions, call Vera 292-8332.

The *Wasatch Tango Club* meets weekly at the Casalino School of Creative Arts, for brief instruction and practice in the **Argentine Tango**. All are welcome, regardless of dance experience. No partner is needed. Instruction begins on Wednesdays at 8PM, and dancing continues until 10+ pm. Address : 1595 South, 1100 East.

And...be looking for notice of a special two week engagement of master teacher Florencia Taccetti from Buenos Aires, coming the second and third weeks of March! Please call 463-7992 for more information.

I NEED SNOWSHOE LEADERS

Don't be selfish--share your favorite trek with the rest of us. We especially welcome challenging/adventurous/exotic trips, (Nebo during a blizzard?) within the limits of polite safety. We also need the NTDS to encourage the less experienced and physical among us. So don't be shy.

Give me a call and let's talk
Larry Nilssen at (296-1716)

RACQUETBALL

Wednesday nights 8:00 - 9:30 pm for the month of February starting on Feb. 11. Any level OK. If interested, please contact Bob at 969-2825.

WASATCH MOUNTAIN CLUB ACTIVITIES

Only activities approved by the appropriate WMC director can be listed in the Club activities section of *The Rambler*. Send your proposed activity for approval to the hiking, boating, skiing, etc., director for inclusion in their activity schedule. Those activities sent directly to *The Rambler* without approval will not be published.

*** Participation in any WMC activity can be dangerous. It is **your** responsibility to evaluate your own preparedness and ability to safely participate in any activity.

*** On ski tours requiring avalanche transceivers, be advised that this season, only beacons compatible with the new international frequency standard (457 kHz) will be accepted on WMC ski tours.

+++ Ski Tour Ratings: EL=Entry level NTD=Not too difficult MOD=Moderate MSD=Most difficult.

ACTIVITY SCHEDULE

EVERY THURSDAY

SKI TOUR: MILL CREEK ROAD TO ELBOW FORK & BEYOND (NTD) BEGINNERS WELCOME:

EVERY THURSDAY AFTERNOON Take in the beauty of Mill Creek Canyon and get some good exercise each Thursday afternoon - till March 26 weather and snow permitting. Meet at Skyline High School east parking lot by 3:45 p.m. to car pool up the canyon. For more information please call Ginny Coombs, 961-3371 or Wes Groesbeck, 485-0280.

JAN 31 SAT

SKI TOUR: ORGANIZER'S CHOICE (MOD+) The destination is currently undefined, but it will be choice if Edgar Webster (583-0703) has anything to do with it. Be equipped with an avalanche beacon, shovel, skins, plus bus fare. Be assembled at the Butler Elementary School at 8:00 am.

JAN 31 SAT

SKI TOUR: BRIGHTON TO TWIN LAKES PASS TO SILVER FORK (MSD) A classic is back! Larry Stewart is reviving a trip the Club used to do in years past. Meet at Butler Elementary School at 8:30 am and be prepared for a car shuttle. Bring your avalanche beacon, shovel, skins, lunch, etc. For information call Larry at 944-0213.

JAN 31 SAT

SOCIAL: SYMPHONY NIGHT - Join Jeanne Matyjasik (H/975-7753, W/531-6100-110) at 6:00 p.m. at Baci Trattoria/134 W. Pierpont Av./328-1333 followed by the Utah Symphony at Abravanel Hall at 8:00 p.m. The program is conducted by J. Silverstein with Edgar Meyer, Double Bass playing Haydn, Tower, and Debussy. Please contact Jeanne **IN ADVANCE** for info.

JAN 31 SAT

SNOWSHOE: WHITE PINE (MSD) Tom Walsh (969-5824) will reprise White Pine for the breathtaking views and breath taking exercise. This is a difficult trip. Deep snow could make it even more so. But if you like challenges and pristine cirques, double check your gear, pick up a spare hose clamp or two, and come on out. Butler Elementary, 9AM.

JAN 31 SAT

SNOWSHOE: GRIZZLY GULCH (NTD+) Gretchen Siegler (461-0407) will reprise Grizzly Gulch, with a new twist: this time there will be snow! So if you seek a "kinder, gentler" 'shoe on the 31st, that still packs a nice view or Mt. Superior and environs, come on out. Butler Elementary, 9AM.

FEB 1 SUN

SNOWSHOE: LEADERS CHOICE (NTD+) Where has "The Knickster" been all these weeks? Well, truth be known, he has been working. His boss will give him a pass this week, but he didn't specify which one (Scott's, Catherine's, etc) Join Knick to find out. Call 272-2485 if you can't stand the suspense. Butler Elementary 9AM.

FEB 1 SUN

SNOWSHOE: BIG WATER UP MILL D (MOD) Mohammad Abdallah leads this Sunday's cardiac event into some very nice scenery. Why is "Little Water" on the map but not "Big Water?" Is "Little Water" more significant (ie "bigger") than "Big Water?" Find out. All you have to do is follow Mohammad. Butler Elementary, 9AM.

FEB 1 SUN

SKI TOUR: SNAKE CREEK CANYON (MOD) For the kick & glide crowd, Dave Nardinger is organizing a trip around and about the canyon that slopes eastward from the Brighton ski resort's lift of the same

name. Call Dave to register and obtain the necessary information about where and when to meet. (595-6744)

FEB 1 SUN

SKI TOUR: LOWER SILVER FORK (NTD) Tim is fixing to do an easy tour in smooth bottomed side canyon, on a pleasant trail, and probably will stop before the point where it gets ugly. Meet Tim Boshert (298-1814) at the Butler Elementary School at 9:00 am. Bring skins if you want.

FEB 1 SUN

SKI TOUR: ORGANIZER'S CHOICE (MOD) You can be sure that organizer Leslie Woods will NOT lead you astray. She will go to a right, proper, suitable, and appropriate destination. Bring your avalanche beacon, shovel, and skins. Meet at Butler Elementary School at 8:30 am. (call Leslie at 484-2338 if you are curious).

FEB 1 SUN

SKI TOUR: ALTA TO CARDIFF TO MONTREAL HILL (MSD) Another Brad Yates excellent adventure is in the making. Bring bus fare for this trip in addition to the regular skins, shovel, and avalanche beacon. Call Brad at 521-4185 to register, and obtain the secret meeting place and time.

FEB 3 TUES

SNOWSHOE: PARK CITY AREA (MOD) Call Vince De Simone (1-435-649-6805) as the day approaches to see what plum tour he would like to pluck. Depends on the snow, how the planets align, etc.

FEB 3 TUE

SKI TOUR: TUESDAY MORNING BREAKFAST CLUB (MOD+) This is a fast paced half day outing with an early start and a timely finish so you can get to work by noon. You must have an avalanche beacon, shovel, and skins. Call Edgar Webster at 583-0703 to register. The official mantra: Early to bed, Early to rise. Break some trail, Burn your thighs.

FEB 4 WED

CLIMBING - WASATCH FRONT CLIMBING GYM - BEGINNERS WELCOME! Join us any time after 6:30 PM for an evening of indoor climbing at 427 West 9160 South. Cost is \$7.00 per visit, or monthly memberships are available. Rental gear is available. Younger participants are welcomed, but they must be accompanied and supervised by an adult. Since this is a professionally monitored, controlled environment,

helmets are not required. Call Alan Lindsay (942-0641) or Doug Harris (233-9404) if you have questions.

FEB 3 WED

BOARD MEETING: The WMC board begins promptly at 7:00pm at the WMC offices, 1390 S., 1100 E., and is open to all WMC members.

FEB. 6 FRI

SOCIAL: SING-A-LONG (NTD!!!) - Join Frank Bernard (533-9219) at 7 P.M. for this fun event of folk and joke singing. Bring your voice and/or guitar to Frank's (417 N. Center St. in Capitol Hill/about 130 West 400 North), and we'll entertain ourselves in this 100% audience participation event. Bring your own beverage and snacks - an enthusiastic attitude is the only requirement!

FEB 6 OR 7 OR 8 FRI OR SAT OR MAYBE SUN MOONLIGHT PHOTOGRAPHY (NTD)

Ever wondered how to do those fantastic scenic photographs illuminated by moonlight? Bob Grant is organizing an outing to American Fork Canyon behind Timpanogos to stalk the rare scenes and elusive lighting that it takes to make a stunning photograph. You might see the results on the Rambler cover. Call Bob at 273-0369 to register. You can use skis or snowshoes. You need an adjustable camera and tripod. Limit of 6 people. Bob will choose one of the nights that has the best prospects for weather and light.

FEB 7 SAT

SNOWSHOE: SCOTT'S PASS (NTD) Martin Clemans (968-1252) has promised a true "easy" NTD for those who like their NTDs to really mean "kinduv easy, not really too hard." As opposed to "Not Too Difficult (but containing a degree of real difficulty) Got it? Butler Elementary, 9 AM.

FEB 7 SAT

SNOWSHOE: AMERICAN FORK (MOD) Russ Pack leads the third iteration of his American Fork, Winter '98 adventure series to explore the less traveled, more spectacular trails of the American Fork Canyon. Call Russ (572-5653) for details.

FEB 7 SAT

SKI TOUR: NORTH FORK PARK IN OGDEN VALLEY (NTD) Something different at last - Ralph Johnson is leading this NTD tour in gentle terrain near Pineview Reservoir. Call him at 544-2435 for details. In Salt Lake meet in the southwest part of the Home Depot parking lot on 2100 South and 300 West at

8:00 am. In Odgen meet at the Wilshire Theatre at Harrison Blvd and Highway 89 at 9:00 am. Touring skis are OK. Hint to Salt Lake people - If you inform Ralph you are coming, he will wait.

FEB 7 SAT

SKI TOUR: CLYDE CREEK TO MUD CREEK (MOD)

Located in the Heber & Daniels Summit area, this tour is about 14 miles round trip and gains a moderate 1000 feet of elevation. Touring skis or light mountaineering gear is suitable. Call Mike Berry for details (583-4721)

FEB 7 SAT

SKI TOUR: ORGANIZER'S CHOICE (MOD+) Once again Edgar Webster is waiting until the last minute to pinpoint the location of the tour de jour. But that's OK - it will result in the ideal snow and slope conditions. Have your avalanche beacon, shovel, skins, and Canyon bus fare at Butler Elementary School at 8:00 am. Call 583-0703 for details.

FEB 7 SAT

SKI TOUR: PFEIFFERHORN (MSD) Walt's favorite ski trip is that most worthy and pointy topped mountain that we all lust to get on top of - the Pfeifferhorn. You must have an avalanche beacon, shovel, skins, and good skiing skills. Call Walt Haas to register. (534-1262)

FEB 8 SUN

DEATH VALLEY BIKE TRIP PLANNING MEETING

Bob Wright, 649-4194, has scheduled a mandatory planning meeting for those participants of the Feb. 12-16 Death Valley Bike Trip. The planning meeting will be at Ralph and Donna Fisher's (649-0183) house 7411 N. Hitching Post, (Pinebrook) Park City.

FEB 8 SUN

SNOWSHOE: DOG LAKE TO THE OVERLOOK (NTD+) Tom Willis leads this tour up Mill D North Fork to the 9401' overlook west of Dog Lake. The views from up there are fantastic - Mt. Raymond, Gobbler's Knob, Reynolds - bring lots of sunscreen. Meet at Butler Elementary, 9AM.

FEB 8 SUN

HIKE: ANTELOPE ISLAND WINTER HIKE(MOD). Back by popular demand. All of the reasons to go to Antelope Island in January apply in February so Robert Turner (538-4861 or 593-0676) will again organize this popular hike. Be sure to include lunch, your binoculars and entrance fee. Meet at 9AM at the Utah Travel Council parking lot on Capitol Hill to carpool or meet Robert at 10AM in the parking area at

the entrance to the Antelope Island Causeway. Take I-15 to exit #335, then go west about 7 miles. Any questions, Call Robert between 9AM and 11PM.

FEB 8 SUN

SKI TOUR: BEARTRAP FORK (MOD+) When you need a little more steep and a little longer slope than Reynolds, you go to Beartrap. Join Tom Walsh for some Sunday yo yo skiing. You must have the mandatory three: beacon, shovel, and skins. Also plan on having UTA bus fare. Meet at Butler Elementary at 8:30 am. Details available at 969-5842)

FEB 8 SUN

SKI TOUR: BROADS FORK TWIN PEAKS (MSD)

Because of considerable avalanche danger and exposure, this outing is restricted to those who are highly qualified, physically strong, and properly equipped. Call George Westbrook to register. (942-6071)

FEB 8 SUN

SKI TOUR: JULIE ANDREWS MEADOW (NTD+)

The question: Will Pete Mimmack twirl and leap and sing about how the hills are alive with the sound of music? The answer will be revealed to participants on Pete's tour. You have to phone him at 1-801-377-2330 for details.

FEB 10 TUE

SKI TOUR: TUESDAY MORNING BREAKFAST CLUB (MOD+)

This is a fast paced half day outing with an early start and a timely finish so you can go back to work by noon. You must have an avalanche beacon, shovel, and skins. Call Edgar Webster at 583-0703 to register. The official mantra: Early to bed, Early to rise. Break some trail, Burn your thighs.

FEB 11 WED

CLIMBING - ROCKREATION CLIMBING GYM - BEGINNERS WELCOME!

Join us any time after 5:30 PM for an evening of indoor climbing at 2074 East 3900 South. Discounted cost for WMC members is \$7.00 per visit, or monthly memberships are available. Equipment rental is free to WMC members. Younger participants are welcomed, but they must be accompanied and supervised by an adult. Since this is a professionally monitored, controlled environment, helmets are not required. Call Alan Lindsay (942-0641) or Doug Harris (233-9404) if you have questions.

FEB 12-16 THURS-MON

DEATH VALLEY BIKE TRIP: MOUNTAIN & ROAD

If you would like to escape from the wintertime chills

and have a great time too, try the forth annual Death Valley Days bike trip with the old ranger, Bob Wright. There will be road and mountain biking, hiking, swimming, and relaxing. We will stay the Furnace Creek Campground. The campground has a wonderful swimming pool and museum. The last couple of years it has been 85-90 degrees of crystal clear weather. A visit to Scotty's Castle, Ubehebe Crater, Telescope Peak, Stovepipe Wells, Sands Dunes, Badwater, and Artists Drive are possibilities. Estimated cost including camping and food - \$60.00 per person plus , not including transportation. Payment due at planning meeting. This is a joint trip with Bonneville Bicycle Touring Club. Call Bob Wright 649-4194 to register. ***See the planning meeting notice of Feb. 8.***

FEB 14 SAT

SNOWSHOE: ORGANIZER'S CHOICE IN MILL CREEK (NTD) Doug Stark (277-8538) wants to explore Mill Creek Canyon, but wants to tailor his destination to snow conditions. Meet Doug at Skyline High parking lot, 9:15 AM.

FEB 14 SAT

SKI TOUR: VALENTINES DAY SPECIAL (MOD+)

The very babely Jane Webster is organizing a Valentines Day outing into the wilds of the Wasatch. Have your beacon, skins, and shovel ready at the meeting place near Einsteins in the Olympus Hills shopping center at 8:30 am. Plan to stop for refreshments. Questions? Dial 583-0703. Singles will not be turned away, PROVIDED that they bring abundant bribes of chocolate.

FEB 14 SAT

SKI TOUR: WOLVERINE BOWL (MSD) Harold Goeckeritz is heading up an outing to our favorite bowl. If you bring your beacon, shovel, and skins to Butler Elementary School at 9:00 am, Harold will show you a few turns. Call 553-8153 for info.

FEB 15 SUN

SNOWSHOE: LAKE BLANCH (MOD+) Monty Young, February, Lake Blanch! It doesn't get any better. This can be a difficult trip if snow conditions are adversarial. But the scenery is something to write home about! (If you live at home, why would you want to write to there? Ask Monty.) Butler Elementary at 9 AM

FEB 15 SUN

SNOWSHOE: MINERAL FORK (NTD) Join Norm and Carma Pobanz for a (dare I say) not too difficult level (but containing some elements of difficulty)

treatise of this lovely place. An nice way to spend some time. Butler Elementary at 9AM.

FEB 15 SUN

SKI TOUR: PRESIDENTIAL TOUR (EL+) They call it the Presidential Tour because our esteemed President Linda Kosky is leading an easy trip to the Solitude Touring track. This outing is especially for the new graduates of the Audrey Kelly Learn-to-Ski Clinic. Linda's trip will be an easy, flat, kick and glide tour for those who like their skiing at a less than athletic pace. Coffee and hot chocolate at the Brighton store is definitely planned. Light touring skis are OK. Call Linda at 943-1871.

FEB 15 SUN

SKI TOUR: YELLOW PINE CREEK TO YELLOW PINE LAKE (MOD) Once in a while you need a Uinta tour to exorcise the urban kinks. This tour is steeper than usual gaining about 2400 feet; round trip distance is 7 miles. Jerry Hatch, the trip organizer, approves the use of touring skis or light backcountry skis. Skins will help with the ascent. Call to register: 583-8047.

FEB 15 SUN

SKI TOUR: BELLS CANYON (MSD) If you need a long hard day, consider joining George Westbrook in Bells Canyon. Skiing at the top is wonderful, but that exit at the bottom can be a S.O.B. if the snow is sparse. Call George at 942-6071 to register.

FEB 16 MON - PRESIDENTS DAY

SNOWSHOE: ELBOW FORK (NTD) Larry Nilssen promises an EASY walk up Mill Creek to Elbow Fork and as far up Elbow Fork as an hour and a half (one way) will get. How easy is it? Well, for starters, he proposes a late start - how about 10 AM at Skyline High School?

FEB 16 MON

SKI TOUR: MINERAL FORK The plan is to go past three water crossings to a meadow area, which Martin McGregor says is pretty and tranquil in the winter. Skins are recommended. Assemble at the Butler Elementary School at 9:30 am. (967-9860)

FEB 17 TUE

SKI TOUR: TUESDAY MORNING BREAKFAST CLUB (MOD+) This is a fast paced half day outing with an early start and a timely finish so you can go back to work by noon. You must have an avalanche beacon, shovel, and skins. Call Edgar Webster at

5830703 to plan your scam. Official Mantra: Early to bed. Early to Rise. Break some trail. Burn your thighs.

FEB 18 WED

GENERAL MEMBERSHIP MEETING AND ELECTIONS FOR 1998-1999. Plan to attend and encourage all your fellow club member friends to support this meeting. The Governing Board for 1998-1999 and one trustee for the term 1998-2002 will be elected. A speaker, yet to be found, will present a program on a topic guaranteed to be of great interest. Light refreshments will be served.

FEB 18 WED

CLIMBING - WASATCH FRONT CLIMBING GYM - BEGINNERS WELCOME! Join us any time after 6:30 PM for an evening of indoor climbing at 427 West 9160 South. Cost is \$7.00 per visit, or monthly memberships are available. Rental gear is available. Younger participants are welcomed, but they must be accompanied and supervised by an adult. Since this is a professionally monitored, controlled environment, helmets are not required. Call Alan Lindsay (942-0641) or Doug Harris (233-9404) if you have questions.

FEB 21 AND 22 SAT-SUN

SNOWSHOE: OVERNIGHT TO MT MORIAH CABIN (MOD) Scott and Kim Patterson, veteran winter campers, would like to lead an interesting overnight trip to this exotic location away from the front. Be prepared to go 6.5 miles one way with a 3000' elevation change. The cabin holds 5. Towed sleds OK Call prior to Feb 18, as there is the possibility for a Friday PM departure, spend the night with Scott's family in Delta and get an early AM go.

FEB 21 SAT

SNOWSHOE: DOG LAKE (NTD) Janet Friend (268-4102) graciously agreed to lead this easier trip to Dog Lake for a "Dog Lake Afternoon." Why do they call those cold, blustery days in Feb "The Dog Days of Winter?" Find out. Butler Elementary, 9AM.

FEB 21 SAT

SKI TOUR: PINE HOLLOW TRAIL TO GREAT WESTERN LOOP (NTD+) Think about only 1000 feet of elevation gain, 3 miles of length, avalanche free, and a splendid view of Timpanogos - this is Gerrish Willis' trip. You will need climbing skins, sturdy touring or back country skis and \$3.00 per car for the fee to enter American Fork Canyon. Meet at the Draper Exit, 12400 South Park and Ride, Exit # 294, of I-15 at 9:00 am. Plan to meet Gerrish at 9:15 am at the

Alpine Exit Park and Ride, Exit # 287, on the east side of I-15. Call Gerrish for details 801-763-9987.

FEB 21 SAT

SKI TOUR: RIGHT FORK OF LITTLE HOBBLE CREEK (NTD) This tour follows a gently rising jeep road to a seldom visited meadow. The tour originates in the Wallsburg/Deer Creek area. Michael Berry suggests light backcountry skis. Meet at the K Mart parking lot on Parley's Way at 8:30 am. Call Michael (583-4721) for alternate meeting sites outside the valley.

FEB 21 SAT

SKI TOUR: RED PINE LAKE CIRQUE AND MAYBE MAYBIRD (MSD) Ever been envious of those tracks you see high in the Red Pine Lake Cirque? If you go with Peter Campbell you might be able to leave a few tracks of your own. Join Peter at 9:00 am at Butler Elementary school for this excellent adventure. Bring avalanche beacon, shovel, and skins. Call Peter for info at 966-6032.

FEB 21 SAT

SNOW-BLOWERS HIKE TO THE LODGE. This is a Work party to clear snow from the entrances and roof of the Lodge. We have some new snow scoops and a snow-blower that will help us remove the snow more efficiently. We'll also use a snow slide and possibly ice saws and sleds. Your continuing support is needed plus it's fun to work together. Everyone is welcome. Please plan to come Saturday morning at 8:30 am or thereafter. Lunch will be provided for all workers. Call Julie for details or rides at 278-4753.

FEB 22 SUN

SNOWSHOE: CORNER CANYON TOWARD LONE PEAK (NTD) - A DOGGIE TOUR Warren Stockton, would like to exercise his dog on an easier trek up Corner Canyon towards Lone Peak. (South of the Tri Canyon area). Social, well adjusted individuals are welcomed, their owners can come too! Call Warren (253-0395) for specifics.

FEB 22 SUN

SNOWSHOE: DESOLATION LAKE (MOD): For those who prefer their dogs hot and on a bun, Leslie Woods has offered a day of her time to reach Desolation Lake, most likely by way of Mill D. If you can do a MOD level tour, you are invited along. This is a nice tour. 9AM, Butler Elementary.

FEB. 22 SUN

******ENTERTAINMENT PLANNING**

MEETING**POTLUCK - ALL WELCOME** This is the group that concocts all those fun events you've been enjoying. Why not come and share YOUR great ideas...No obligation and no special equipment or skills. Just bring a great big smile and join us in planning the holiday and winter social events at Lori Ball's hacienda (1261 Yale Ave./583-8133) 5-7 p.m.

FEB 22 SUN

SKI TOUR: GREENS BASIN TO 2ND MEADOW

(NTD) Here's John's deal: If you have a cup of coffee (or hot chocolate) afterwards, he will take you to this fine NTD destination. It has a smooth trail suitable for touring skis. Skins are not absolutely needed but bring them in you want the ultimate in traction. Meet at Butler Elementary School at 8:30 am. Phone 569-1332.

FEB 22 SUN

SKI TOUR: WINDY RIDGE TELEMARKING

EXPERIENCE (MOD ~) Cheryl Soshnik is organizing this trip to a beautiful, remote area off of the Weber River drainage in the Uintas. A 3,000+ foot elevation gain will be achieved, and telemark turns will be the order of the day. You will need an avalanche beacon, shovel, and skins. Call Cheryl for meeting places/times and to register.

FEB 22 SUN

SKI TOUR: ORGANIZER'S CHOICE (MSD)

The location is not yet identified, but it will likely require an early start and probably involve summiting a peak. If Dave does it, it will be an adventure. Call Dave Smith at 572-0346 for further information. Don't even plan to go unless you have an avalanche beacon, shovel and skins.

FEB 22 SUN

SKI TOUR: RESORT SKIING AT SOLITUDE (MOD)

For a change, lets go alpine skiing at a resort! You get more runs per day here than anywhere except Deer Valley, and with the price difference can get 4 loaded cheeseburgers. Cullen Ponte will assemble this outing at Butler Elementary School at 8:00 am, thus allowing enough time to carpool to Solitude and get a lift ticket by opening time. 969-8499.

FEB 24 TUES

SNOWSHOE: PARK CITY AREA (MOD)

Vince Desimone (1-435-649-6805) leads this fifth iteration of his Park City Series of 97-98. Call Vince as the

day approaches to discover the "Tour Dijour" in the Park City area.

FEB 24 TUE

SKI TOUR: TUESDAY MORNING BREAKFAST

CLUB (MOD+) This is a fast paced half day outing with an early start and a timely finish so you can go back to work by noon. You must have an avalanche beacon, shovel, and skins. Call Edgar Webster at 5830703 to plan your scam. Official Mantra: Early to bed. Early to Rise. Break some trail. Burn your thighs.

FEB 25 WED

CLIMBING - ROCKREATION CLIMBING GYM -

BEGINNERS WELCOME! Join us any time after 5:30 PM for an evening of indoor climbing at 2074 East 3900 South. Discounted cost for WMC members is \$7.00 per visit, or monthly memberships are available. Equipment rental is free to WMC members. Younger participants are welcomed, but they must be accompanied and supervised by an adult. Since this is a professionally monitored, controlled environment, helmets are not required. Call Alan Lindsay (942-0641) or Doug Harris (233-9404) if you have questions.

FEB 28 SAT

SNOWSHOE: ALBION BASIN (NTD) Doug Stark has kindly offered to reschedule his Albion Basin trip which was canceled in January for lack of circulation (in Rambler). See it in cold black and white (and green) before it gets all crowded out by those nasty wildflowers! Doug wants to sleep in - meet 9:15 AM at Butler Elementary.

FEB 28 SAT

SNOWSHOE: MINERAL FORK (MOD-)

Tim Boschert would like to lead a trip at a MOD- level into Mineral Fork, a delightful journey among mountain streams and quiet snow laden spruce trees (or is it pine? - see the cover, January Rambler) . Meet at Butler Elementary, 9AM

FEB. 28 SAT

SOCIAL: SADIE HAWKINS' DAY POTLUCK AND

SQUARE DANCE Yes, WMC gentlemen, it's the ladies' turn for this one...we're celebrating this early 'cause it was SO much fun the last time and is back by popular demand!!! That's why! Place: The PMAA/Hendrickson Lodge (take I-80 East up Parley's to exit 134 - Mountain Dell Recreation exit - turn right and follow frontage road to the parking lot). Stir up some grub. The potluck will commence at 6:30 p.m. with square dancing being called by Bart starting at 8:00 p.m. (We always have a great time when Bart

calls the "squares".) Instruction is provided. Dress code: straight from the country! (i.e., coveralls, jeans, scarf's, cowboy boots, etc.). Cost: \$5.00/person for WMC members or \$7.00/person for non-members.

FEB 28 SAT

SKI TOUR: BEAVER CREEK TRAIL (EL+) For the Audrey Kelly Learn-to-Ski graduates, here is the 2nd in the series of non-intimidating kick and glide style tours. New skiers are welcome--this is suitable for beginners. Touring skis are OK. Waxable skis will work too. Met Liz Cordova at the K Mart on Parleys Way at 8:30 am. The tour will commence about 9:30 am at Beaver Creek about 6 miles east of Kamas. Remember to bring \$3.00 per car for the area fee. (486-0909)

FEB 28 SAT

SKI TOUR: WEBSTER'S CHOICE (MOD+) One thing about Webster's choice is that it's a better deal than Hobson's choice. Edgar will select a fine slope, with smooth powder, and a suitable angle for a good day of telemark turning. Bring the mandatory skins, shovel, and avalanche beacon. (583-0703)

FEB 28 SAT

WINTER CAMPOUT: OVERNIGHT CAMP By popular demand Larry Coulter will conduct a winter overnight campout above Grizzly Gulch near Twin Lakes Pass. Participants may either snowshoe or ski into camp where you will cook dinner that evening and breakfast the following day. Larry will provide coaching on setting up a winter kitchen and campsite. There will be a planning meeting at 5:00 pm on Feb 21 (Sat.) to get ready for the departure at noon on Feb 28. Call Larry at 485-9623 to register.

MAR 1 SUN

SNOWSHOE: Co-OP CREEK TO UPPER SETTING LOOP (MOD) Cheryl Soshnik serves up this "away from the front" trek to stir the imagination. Meet to carpool at Parley's Way Kmart (by Foothill Drive) at 8:30 am or meet the leader at Kamas High School at 9:30 am. Remember to bring \$3.00 per car for toll for the Mirror Lake Highway Rec. Area Fee.

MAR 1 SUN

SNOWSHOE: GREENS BASIN (NTD) Loraine Lovell will lead a "kinder, gentler" tour for those who would like a "softer walk," and perhaps would like to have some time free in the later afternoon. Butler Elementary, 9AM.

MAR 1 SUN

SKI TOUR: CARDIFF FORK (NTD) The good news is that this route is on a wide, smooth road. The bad news is that it is also used by snowmobiles. Nevertheless it is a nice easy tour. Gloria Abdullah wants participants to stick with the group, or don't go. The start will be at 9:00 am from Butler Elementary School. (466-9016)

MAR 1 SUN

SKI TOUR: WEBER CANYON TO HOLIDAY PARK (NTD-MOD) Ski along with Michael Berry (583-4721) to scenic Holiday Park or turn around at any point for a shorter day. General touring gear is appropriate. Dogs are allowed on this Uintas trip. Meet at the K-mart parking lot on Parley's Way at 8:30 am or call Michael for Park City meeting time/canine questions.

MAR 1 SUN

SKI TOUR: AMERICAN FORK TWIN PEAKS VIA WHITE PINE CANYON. (MSD) George Westbrook will organize a climb and ski trip to the tallest summit of the Salt Lake area. It requires an early start, a steady day-o-work, plus lots of endurance and strength. Call George to register at 942-6071.

MAR 3 TUES

MOUNTAIN BIKE: BONNEVILLE SHORELINE TRAIL AND ROAD BIKE: EMIGRATION CANYON (NTD+ - MOD) Back to the classic Salt Lake area rides. Depending on the weather - all riders can meet at the mouth of Emigration canyon (800 So. /Wasatch Dr.) across from Hogle Zoo. The rides are **show and go** starting at 6:00 p.m.. Ride either the Shoreline trail or out n back in Emigration Canyon. Expect at least an hour or more of riding. Call Tim Boschert, 298-1814, for more info.

MAR 3 TUES

CLIMBING - WASATCH FRONT CLIMBING GYM - BEGINNERS WELCOME!..New days, going to twice a week to get ready for climbing outdoors. Join us any time after 6:30 PM for an evening of indoor climbing at 427 West 9160 South. Cost is \$7.00 per visit, or monthly memberships are available. Rental gear is available. Younger participants are welcomed, but they must be accompanied and supervised by an adult. Since this is a professionally monitored, controlled environment, helmets are not required. Call Alan Lindsay (942-0641) or Doug Harris (233-9404) if you have questions.

MAR 3 TUE

SKI TOUR: TUESDAY MORNING BREAKFAST CLUB (MOD+) This is a fast paced half day outing

with an early start and a timely finish so you can go back to work by noon. You must have an avalanche beacon, shovel, and skins. Call Edgar Webster at 583-0703 to plan your scam. Official Mantra: Early to bed. Early to Rise. Break some trail. Burn your thighs.

MAR 5 THUR

CLIMBING - ROCKREATION CLIMBING GYM - BEGINNERS WELCOME! New days, going to twice a week to get ready for climbing outdoors. Join us any time after 5:30 PM for an evening of indoor climbing at 2074 East 3900 South. Discounted cost for WMC members is \$7.00 per visit, or monthly memberships are available. Equipment rental is free to WMC members. Younger participants are welcomed, but they must be accompanied and supervised by an adult. Since this is a professionally monitored, controlled environment, helmets are not required. Call Alan Lindsay (942-0641) or Doug Harris (233-9404) if you have questions.

MAR. 6 FRI

SOCIAL: SING-A-LONG (NTD!!!) - Join Frank Bernard (533-9219) at 7 P.M. for this fun event of folk and joke singing. Bring your voice and/or guitar to Frank's (417 N. Center St. in Capitol Hill/about 130 West 400 North), and we'll entertain ourselves in this 100% audience participation event. Bring your own beverage and snacks - an enthusiastic attitude is the only requirement!

MARCH 7 SAT

BOATING - PLANNING PARTY Not yet time to dust of the paddles, but it is the time to plan for an action packed river season 1998! Bring your permits, your ideas and your volunteer spirit to our Planning Party. March 7 @ 7:00 pm. Light hors d'oeuvres pot-luck. Zion Lutheran Church Basement, 1070 S Foothill. For any questions, call Vera 292-8332.

MAR 7 SAT:

SNOWSHOE: THOMAS FORK OF NEFF'S CANYON: (MSD) Ilka Allers-Olsen and Allen Olsen have offered to share one of their favorite treks - an exquisitely beautiful but very challenging tour up the Thomas fork of Neff's Canyon. (3 miles one way, 3000' el change) Snow conditions must be ideal for safety considerations, so call the day before to see if the trip is canceled (272-6305). Plan on an 08:30 meeting at Skyline High School.

MAR 7- 8 SAT - SUN:

SNOWSHOE: NORTH FRANCIS PEAK (9706') OVERNIGHT (MSD) Scott and Kim Patterson, our arctic adventurers, would like to challenge us to a 6.5

mile (one way) 4500' gain trek close to home - Francis Peak North, near Farmington! The destination: a cabin that was there in 1982 - get out your "Peterson Quad," check the upper left for Hobbs Canyon - see that trail? That's the route to "Francis 9706" Want more details? Talk to Scott (963-2263)

MAR 7 SAT

SKI TOUR: REYNOLDS PEAK (MOD) Once again in 1998, the peoples choice winner for best MOD slope is Reynolds. Rich Gregerson is organizing a trip which will depart from Butler Elementary School at 9:00 am. Phone 467-6247 for info. Like every outing where there is any exposure to avalanches, you must have a beacon, shovel, and skins for climbing.

MAR 7 SAT

SKI TOUR: STRAWBERRY PEAK (MOD ~) This tour in the Daniel's Summit area climbs past Telemark hill and Twin Peaks (1,700 foot elevation gain over 5 miles) on its way to a great vantage point of the southern Wasatch. Michael Berry says light backcountry skis are best as steep slopes will be avoided on the selected route. Skins are not needed if you are good at waxing. Meet at the K Mart parking lot on Parley's Way at 8:30 am. Call Michael (583-4721) for alternate meeting sites outside the valley.

MAR 7 SAT

SKI TOUR: SOLDIER FORK VIA MILL D NORTH FORK (MSD) It is said this is an easy MSD trip, with its 1600 elevation gain. Peter Campbell is planning to enter Big Cottonwood Canyon, ski down Soldier Fork, then exit at Mill Creek Canyon. You must have your avalanche beacon, skins, and rescue shovel. Meet at the east parking lot of Skyline High school at 8:00 am. Call Peter at 966-6032.

MAR 8 SUN:

SNOWSHOE: WHITE PINE TRAILHEAD TO BASE OF PFEIFFERHORN (MOD+) A real adventure - presented by Mohammad Abdallah. This looks to be about 4.5 miles one way, with about a 2400' elevation change. And what a view when you get there! You'll never forget it. Butler Elementary at 8 AM to take advantage of the earlier daylight. (don't show up at 9)

MAR 8 SUN

SKI TOUR: SCOTTS PASS (NTD) We just can't get enough of that ol' standby, Scotts Pass. Bob Grant wants you to have substantial touring skis, or back country skis with skins. No beacon nor shovel is required. Meet at Butler Elementary School at 8:30 am. (273-0369)

MAR 8 SUN

SKI TOUR: UPPER SETTING (NTD) Dave Nardinger (595-6744) promises a tour at a "conversational" pace, and encourages those nordic souls with modest aerobic capacity to join him on this delightful Uintas tour. General touring or light backcountry skis are ok. Meet at the K Mart Parking lot on Parley's Way at 8:30 am.

MAR 8 SAT

SKI TOUR: MAYBIRD (MSD) By this time of year there ought to be 90 inches of snow to cover up those 88 inch boulders. The very bawdy Jane Webster will organize this outing, providing that participants meet her demands for dark chocolate, cashews, or high density licorice. If you can pay the price, you might have fun skiing this exciting side canyon. Meet at Butler Elementary School at 8:30 am with the mandatory beacon, shovel, and skins. (583-0703)

MAR 10 TUES

MOUNTAIN BIKE: BONNEVILLE SHORELINE TRAIL ROAD BIKE: EMIGRATION CANYON (NTD+ - MOD) Back to the classic Salt Lake area rides. Depending on the weather - all riders can meet at the mouth of Emigration canyon (800 So. /Wasatch Dr.) across from Hogle zoo. The rides are *show and go* starting at 6:00 p.m.. Ride either the Shoreline trail or out n back in Emigration Canyon. Expect at least an hour or more of riding. Call Tim Boschert, 298-1814, for more info.

MAR 10 TUES

CLIMBING - WASATCH FRONT CLIMBING GYM - BEGINNERS WELCOME!..New days, going to twice a week to get ready for climbing outdoors. Join us any time after 6:30 PM for an evening of indoor climbing at 427 West 9160 South. Cost is \$7.00 per visit, or monthly memberships are available. Rental gear is available. Younger participants are welcomed, but they must be accompanied and supervised by an adult. Since this is a professionally monitored, controlled environment, helmets are not required. Call Alan Lindsay (942-0641) or Doug Harris (233-9404) if you have questions.

MAR 10 TUE

SKI TOUR: TUESDAY MORNING BREAKFAST CLUB (MOD+) This is a fast paced half day outing with an early start and a timely finish so you can go back to work by noon. You must have an avalanche beacon, shovel, and skins. Call Edgar Webster at 583-0703 to plan your scam. Official Mantra: Early to bed. Early to Rise. Break some trail. Burn your thighs.

MAR 11 WED

MOUNTAIN BIKE AND ROAD BIKE PLANNING & DESSERT SOCIAL BYOB & DD Meet at the home of Tim Boschert 298-1814, to plot out your favorite rides for the season. Everyone welcome. Tim needs your ideas and help to put together the Bicycle Season. Sign up to lead rides and suggest your favorite tours. Bring your own beverage and most decadent desert to share. Get reacquainted with your riding pals and learn about new rides! Call Tim for directions or if unable to make it - suggest a ride you'll lead.

MAR 12 THUR

CLIMBING - ROCKREATION CLIMBING GYM - BEGINNERS WELCOME! New days, going to twice a week to get ready for climbing outdoors. Join us any time after 5:30 PM for an evening of indoor climbing at 2074 East 3900 South. Discounted cost for WMC members is \$7.00 per visit, or monthly memberships are available. Equipment rental is free to Younger participants are welcomed, but they must be accompanied and supervised by an adult. Since this is a professionally monitored, controlled environment, helmets are not required. Call Alan Lindsay (942-0641) or Doug Harris (233-9404) if you have questions.

MAR 14 SAT

ROAD RIDE/CROSS BIKE: SOUTH DAVIS COUNTY, BOUNTIFUL / FARMINGTON (20 mi., NTD+) Tim Boschert, 298-1814, will take a slow and comfortable ride out and back from Bountiful to Farmington. Meet at 10:00 am at the Smith's Food store in Bountiful on US 89. I-15 Exit 318 at 2600 south. Call Tim for more details and weather permitting the ride.

MAR 14 SAT

SNOWSHOE: S. WILLOW LAKE, STANSBURY MOUNTAINS (MOD+) Join Cathy Hunn for a repeat of the January 10 epoch, when 17 happy snowshoers attained this beautiful lake in its pristine setting. Last Chance this winter. Meet at Home Depot (328W 2100S), SW area of the parking lot (9AM sharp) to carpool - 4wd vehicles are necessary to attain the trailhead. Meet Cathy at the (unmissable) Maverick Station at Stansbury Park, @ 9:30 - take I 80 to exit 99. If snow is in doubt, call 1-435-882-6529.

MAR 14 SAT

SKI TOUR: NORWAY FLATS (EL+) Here is the 3rd in the series of easier tours for beginning skiers and graduates of the Audrey Kelly Learn-to Ski Clinic. Good touring skis are fine for the trip. Back country

skis are always suitable, albeit heavy. Martin Clemens is planning a departure from the K Mart on Parleys Way at 8:30 am. He plans to pause at the Kamas highschool at 9:30 am. Phone 968-1252 for info.

MAR 14 SAT

SKI TOUR: DESO SKI-ABOUT ADVENTURE (MSD & EXPLORATORY) This may be a new route, its new to me anyway. Peter Campbell proposes an outing going from Terraces in Mill Creek Canyon to the Big Cottonwood Canyon ridge between Gobbler and Raymond. Any stouthearted explorers willing to help? Peter will explain the concept if you phone 966-6032. Meeting place and time revealed after you register. Beacon, shovel, and skins required.

SUN MAR 15

SNOWSHOE: DESOLATION TRAIL (MOD) Carrie Clark (519-9257) would like to follow the Desolation Trail for a new scenic challenge, beginning from Mill Creek Canyon. We have not seen this tour this season. This should have some nice scenery. Meet at Skyline High School, 9AM. Call if the snow is questionable.

MAR 15 SUN

SKI TOUR: UINTAS TOUR (NTD OR MOD) This trip will be at a steady but not "athletic" pace. (It won't kill you.) Cindy Cromar advises participants to bring lunch and \$3.00 per car for the forest Service fee to enter the Mirror Lake highway. The regular plan prevails for trips to the Uintas: meet at 8:30 am at the K Mart on Parley's Way. In Kamas meet at the Kamas Cafe at 9:30 am. Cindy will elaborate if you call her at 355-4115.

MAR 15 SUN

SKI TOUR: CROSS-COUNTRY IN THE UINTAS (MOD) Cheryl Soshnik will assess the snow and weather conditions and plans an intriguing tour from one drainage to another in the Mirror Lake Highway area. Skins are recommended. Beacons and shovels are not needed. Call Cheryl (1-435-649-9008) regarding the chosen route, meeting places/times, and to register.

MAR 17 TUES

MOUNTAIN BIKE: BONNEVILLE SHORELINE TRAIL ROAD BIKE: EMIGRATION CANYON (NTD+ - MOD) Back to the classic Salt Lake area rides. Depending on the weather - all riders can meet at the mouth of Emigration canyon (800 So. /Wasatch Dr.) across from Hogle zoo. The rides are *show and go* starting at 6:00 p.m.. Ride either the Shoreline trail or out n back in Emigration Canyon. Expect at least an

hour or more of riding. Call Tim Boschert, 298-1814, for more info.

MAR 17 TUES

CLIMBING - WASATCH FRONT CLIMBING GYM - BEGINNERS WELCOME!..New days, going to twice a week to get ready for climbing outdoors. Join us any time after 6:30 PM for an evening of indoor climbing at 427 West 9160 South. Cost is \$7.00 per visit, or monthly memberships are available. Rental gear is available. Younger participants are welcomed, but they must be accompanied and supervised by an adult. Since this is a professionally monitored, controlled environment, helmets are not required. Call Alan Lindsay (942-0641) or Doug Harris (233-9404) if you have questions.

MAR 19 THUR

CLIMBING - ROCKREATION CLIMBING GYM - BEGINNERS WELCOME! New days, going to twice a week to get ready for climbing outdoors. Join us any time after 5:30 pm for an evening of indoor climbing at 2074 East 3900 South. Discounted cost for WMC members is \$7.00 per visit, or monthly memberships are available. Equipment rental is free to WMC members. Younger participants are welcomed, but they must be accompanied and supervised by an adult. Since this is a professionally monitored, controlled environment, helmets are not required. Call Alan Lindsay (942-0641) or Doug Harris (233-9404) if you have questions.

MAR 20-22 FRI-SUN

SKI TOUR: ABAJO RESEARCH (EXPLORATORY) Paul Dowler proposes a trip to a mountain with a defunct ski resort and man made runs. At 11,600 or so, there ought to be decent snow. Off season motel prices in Monticello are low. Paul has promised to install climbing tracks for his friends who want to party, that is, ski the Abajos. Call 294-5310 and leave a message to start the planning for this outing.

MAR 21 SAT

SOCIAL: WESTERN NIGHT AT THE LODGE Hey Dudes & Dudettes - Dust off those cowboy hats and boots and come up for a fun evening at the WMC Lodge. Potluck at a 6:30 p.m. Bring a dish to share for 6-8 people and drinks of choice. Paper goods provided. Line dancing is on the agenda. Cost is \$2/person for the evening. Overnight stay is \$3/person and breakfast is \$2/person. Any ??? or to RSVP- call Barbara Green 466-7702.

MAR 21 AND 22 SAT-SUN

BACKPACK:MOUNT NEBO SNOW CLIMB Scott Patterson (963-2263) organizes this backpack which **REQUIRES** an Ice axe, Crampons, and Avalanche Beacon. This is a wilderness area - limit 13 - so call Scott to register and for info.

MAR 21 SAT

SNOW-BLOWERS HIKE TO THE LODGE . This is a Work Party to clear the snow from the entrances and roof of the Lodge. We have some new snow scoops and a snowblower that will help us remove the snow more efficiently. We may also use a snow slide and sleds. Your continuing support is needed, plus it's fun to work together. Everyone is welcome. Please plan to come Saturday morning. Plan to be at the Lodge at 9:00 AM of thereafter. Lunch will be provided free for all workers. Call Julie to reserve lunch and for questions at 278-4753.

MAR 24 TUES

MOUNTAIN BIKE: BONNEVILLE SHORELINE TRAIL ROAD BIKE: EMIGRATION CANYON (NTD+ - MOD) Back to the classic Salt Lake area rides. Depending on the weather - all riders can meet at the mouth of Emigration canyon (800 So. /Wasatch Dr.) across from Hogle zoo. The rides are **show and go** starting at 6:00 p.m.. Ride either the Shoreline trail or out n back in Emigration Canyon. Expect at least an hour or more of riding. Call Tim Boschert, 298-1814, for more info.

MAR 24 TUES

CLIMBING - WASATCH FRONT CLIMBING GYM - BEGINNERS WELCOME!..New days, going to twice a week to get ready for climbing outdoors. Join us any time after 6:30 pm for an evening of indoor climbing at 427 West 9160 South. Cost is \$7.00 per visit, or monthly memberships are available. Rental gear is available. Younger participants are welcomed, but they must be accompanied and supervised by an adult. Since this is a professionally monitored, controlled environment, helmets are not required. Call Alan Lindsay (942-0641) or Doug Harris (233-9404) if you have questions.

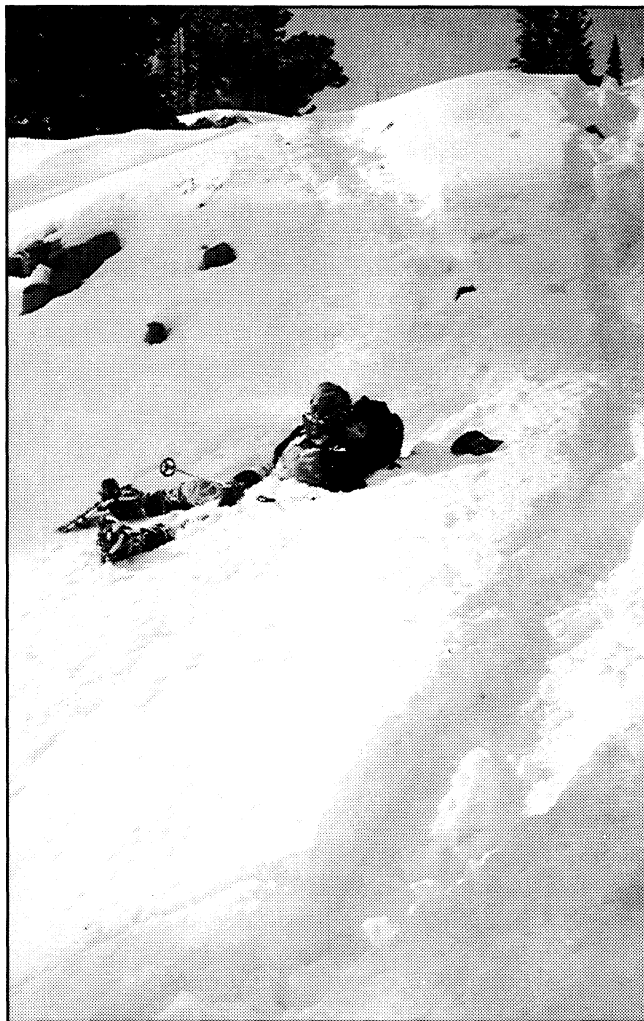
MAR 26 THUR

CLIMBING - ROCKREATION CLIMBING GYM - BEGINNERS WELCOME! New days, going to twice a week to get ready for climbing outdoors. Join us any time after 5:30 pm for an evening of indoor climbing at 2074 East 3900 South. Discounted cost for WMC members is \$7.00 per visit, or monthly memberships are available. Equipment rental is free

to WMC members. Younger participants are welcomed, but they must be accompanied and supervised by an adult. Since this is a professionally monitored, controlled environment, helmets are not required. Call Alan Lindsay (942-0641) or Doug Harris (233-9404) if you have questions.

MAR 31 TUES

CLIMBING - WASATCH FRONT CLIMBING GYM - BEGINNERS WELCOME!..New days, going to twice a week to get ready for climbing outdoors. Join us any time after 6:30 pm for an evening of indoor climbing at 427 West 9160 South. Cost is \$7.00 per visit, or monthly memberships are available. Rental gear is available. Younger participants are welcomed, but they must be accompanied and supervised by an adult. Since this is a professionally monitored, controlled environment, helmets are not required. Call Alan Lindsay (942-0641) or Doug Harris (233-9404) if you have questions.



Duane Johnson snowshoeing (or trying to) at Catherine Pass

COMING ATTRACTIONS

SPRING 1998

TURKEY OR BELIZE SAILING AND LAND

ADVENTURE. Now is the time to express your interest in an adventure trip to one of these two destinations. Substantial interest has been expressed in both. My decision on which trip to organize depends on input from potential participants. Please let me know if you have any interest. This is not a commitment at this time. Once trip details are available, you will be asked to send a deposit to reserve a space. The lead time on getting commitments on sail boats, land and travel arrangements is about 6 months. Tentatively, either trip would be about two weeks long. Our time in Belize would be divided equally between sailing/diving/snorkeling water activity along the Cayes and the barrier reef, and going inland to explore natural settings and Mayan ruins. Turkey would be about 1/3 on a sailboat, the remainder visiting ancient cultural and historic sights, as well as experiencing present culture in villages. I will need a strong indication of interest from enough people if either trip is to go. Call WMC sailing coordinator Vince DeSimone at 649-6805 to express your interest or to ask questions.

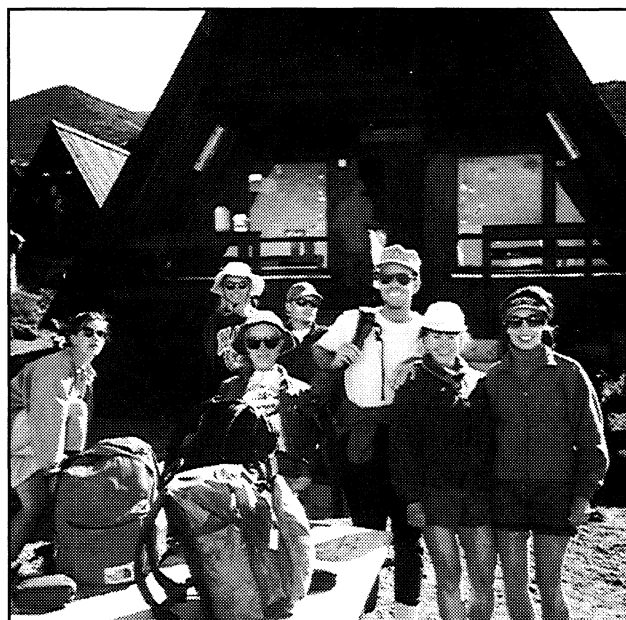
APRIL 1998 TRAVELING TO CHINA: Sandy Dickinson (801 355-9414) has organized a trip to China visiting Beijing, Shanghai, Suzhou, Qufu, Taishan and Jinan. Begins April 10th 1998 for 13/14 days. SFO departure. Cost is \$1399, including air, 3 meals daily, first class hotels, ground transportation, group admission fee, guided sight-seeing and city transportation. \$300 deposit due at booking. Call ASAP. Space is limited.

JUNE 24 1998

EAST AFRICAN SAFARI AND MT. KILIMANJARO

CLIMB The 10th Westminster College East African Safari, led by Drs. Barry Quinn and Robert Warnock, Dept. of Biology, will depart 24 June for Kenya and Tanzania. The 17-day trip will explore some of the major game parks of these countries including Kenya's Samburu, Lake Nakuru, and Maasai Mara game parks and Tanzania's Olduvai Gorge, the Serengeti National Park, and Ngorongoro Crater, considered one of the seven wonders of the natural world. Of interest to WMC members will be a non-technical climb of Africa's highest peak, Mt. Kilimanjaro, at 19,320 feet, in lieu of the Kenyan game parks. Cost of the trip is \$5,200 and includes

all air and land transport from Salt Lake City, first class hotels and game lodges, park entrance fees, guides and porters for the Kilimanjaro climb, and most meals. An optional five day extension to explore the Indian Ocean Coast, Malindi and its coral reef park, and the ancient Arab city of Lamu will be available for \$875. For a brochure or further information, call Barry Quinn at 488-4191 (office) or 272-7097 (home).



1996 Kilimanjaro Climb Horombo Hut Complex at 12,000 ft Barry Quinn, Jan Brain, Judy Elizondo, and Phyllis Anderson

JULY 18-Aug. 2

BACKPACKING/MOUNTAINEERING - SAN JUAN MOUNTAINS

From Silverton, CO., we will drive over 4WD-only Stony Pass. On Sunday we'll backpack over 12,500' Hunchback Pass to Sunlight Creek, our base camp for 3rd class scrambles up two high thirteens: Vellecito and Leviathan Peaks. While hordes of hikers throng to the 14ers, we'll have this beautiful remote area in the San Juan Mountains all to ourselves. The leader, the first woman to climb Colorado's 100 highest mountains, will be spending the entire week in the San Juans, bagging little-known and rarely visited summits. You must be in shape for this altitude. Early starts are mandatory to beat the lightning storms. Joint trip with the Colorado Mountain Club. Utah organizer: Jane Koerner (801-750-0051) in Logan (Map: Storm King/ Backpacking: 18-20 miles r.t./ Climbing 6-8 miles r.t. per peak)

Classy Ads:

Notice: *The Rambler* cannot accept any ad that is inconsistent with the purposes of the WMC or offends the sensibilities of Club members. Send your ad, with enclosed payment if required, to **Sue DeVall**, 11730 S., 700 W., Draper, UT 84020. Please submit by the 12th of the month to ensure your ads inclusion.. Advertising rates are \$5.00 for up to 20 words and 20¢ for each additional word. WMC members may place **free** ads for used recreational gear or for private **non-commercial and not-for-profit** activities

WANTED: ANY PHOTOS, GRAPHICS, or other ideas suitable for the cover page of future rambles. Please put any submissions in the blue box outside the office door complete with captions or appropriate explanations before the 15th of each month. Send in your seasonally appropriate photos to the Mountain Club office.

BACKCOUNTRY SKIS FOR SALE: Karhu XCD GT 180 cm. Full metal edges NNN BC bindings. Montana climbing skins. \$125 takes it all (801) 572-3294.

CLIMBING GEAR: Simond CHACAL ice hammer--excellent cond., large size cams #4 friend through 8" (custom made), bolt kit. Please call before 9PM @ 776-1031.

BACKPACKING STOVE FOR SALE: MSR XGK II. Runs great, mint condition, 1yr old \$65. Please call before 9PM @ 776-1031.

MSR SNOWSHOES FOR SALE: Excellent condition, \$60. Call Vince (435) 649-6805.



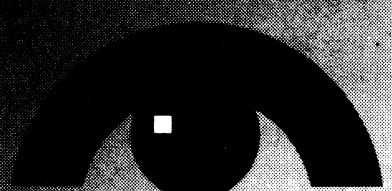
Spinning a WEB page is fun and exciting

THANK YOU to those of you who have submitted material.

If you have developed material or input please feel email it to Tony at ackerman@sequent.

PICTURES: Put your favorite shots of WMC activities on web. Tony has a contact for scanning.

WEB ADDRESS: www.digitalpla.net/~wmc



ICON REMODELING

The foundation and structure remain the same, only the name has changed.

Robert **MYERS**
Vali **MAHAK**

485-9209

Icon Remodeling vision made visible

DIRECTORS MESSAGES

CONSERVATION DIRECTORS

Susan Sweigert

Rep. Jim Hansen threw down the gauntlet - accusing the Utah Wilderness Coalition (of which the Wasatch Mountain Club is one of four executive member groups) of including lands with roads, train tracks, and other impacts in its 5.7 million acre wilderness bill, HR 1500. So the Coalition, spearheaded by SUWA (the Southern Utah Wilderness Alliance), set out to review the boundaries of the proposal. In some places, they did find impacts had occurred since 1985 (when the original Citizens' Proposal was developed) that made it necessary to adjust boundaries inward in some areas of the proposal. The losses in these areas point up the need to protect the remaining wilderness-quality lands as wilderness.

But the real news is that when volunteers and staff got out there, they found more wilderness quality lands - lands not included in **Wilderness at the Edge**, or in the 5.7 million acre bill. The Mountain Club's own Brad Yates (well-known as 1996 Hiking Director, and Conservation Co-Director with me in 1997) contributed considerably by surveying a large roadless segment near the Crater Island Mountains - an ecologically unique and uniquely beautiful part of Utah's West Desert. John Veranth (WMC trustee) and I took on some fieldwork in the Book Cliffs, particularly the areas known as Winter Ridge and Chipeta Canyon. Winter Ridge, is perhaps the only area designated by the BLM as a Wilderness Study Area (WSA), which was not included in HR 1500. Unfortunately, early snows kept us from getting to the area. Chipeta Canyon, which a trip I led for the Club in May 1997 did some work in, is an area that a member of the BLM's own re-inventory team suggested as wilderness quality.

All new areas being considered for addition to HR 1500 are being evaluated by standards stricter than those of the 1964 Wilderness Act and the criteria for roads used by the BLM. Having participated on the Coalition's Technical Review Team for several months, I am impressed by the photographic documentation keyed to map locations which is being used to make decisions on new areas, as well as by the qualities of these new areas.

Some will certainly say - Those Environmentalists! Aren't they ever satisfied? But perhaps the real question is, why should we not seek out and protect, for their biological and geological values as well as their wilderness qualities, all qualifying areas in Utah?

WINTER SPORTS DIRECTOR

Tom Walsh

AVALANCHE AWARENESS QUIZ

"We have met the enemy, and he is us!" (Pogo) More than 19 of 20 avalanche victims trigger the slide that traps them. We all know that back country skiers are at risk. But are other outdoor recreationists at risk from avalanches? The answer is. . . anyone who enters an avalanche zone is at risk.

An avalanche zone is an area where avalanches have run in the past, or might run in the future due to environmental conditions. An avalanche zone includes surrounding run-out zones below slopes and areas impacted by the wind blast around the snow.

TAKE THIS QUIZ

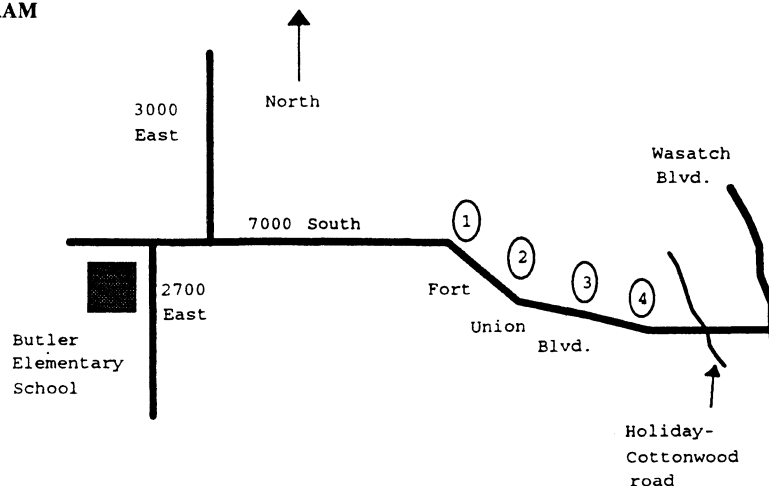
1. Which commonly traveled routes in the Wasatch cross avalanche run-out zones?
 - Dog Lake via Mill D North Fork?
 - Red Pine Lake?
 - Lower Days Fork?
 - Beaver Creek Trail?

2. Are you safe from avalanches if you stay in valley bottoms away from ridges and peaks?
3. Is there any point to wearing an avalanche beacon, when Search and Rescue people refer to them as "Body Retrieval Devices"?

ANSWERS

1. The routes to Dog Lake, Red Pine Lake, and Days Fork all have had avalanches run across their trails. Even mild little Beaver Creek has some slopes nearby that approach the angle at which snow can slide.
2. You are definitely not safe from avalanches merely because you are not traveling on a ridge. The woman who set a world record for the longest deep burial (90 minutes at about 5' under) was avalanched less than a mile from the Big Cottonwood Canyon Road in the Butler Fork drainage.
3. One reason search and rescue people call avalanche beacons "body retrieval devices" is that it frequently takes an hour or more to arrive at the site of a back country avalanche burial. Quite often when they arrive the victim has died. About half the victims die within the first 15 minutes. Almost no victims survive more than 30 minutes. A beacon is important because only your friends on the trip will have the time to do a successful rescue. This is why it is so important to be proficient in beacon rescue techniques. This is why it is important to be vigilant in recognizing avalanche hazards and avoiding, or at least minimizing them.

PARKING LOT DIAGRAM



CAR POOL PARKING LOTS FOR SKIING AND SNOW-SHOEING

Butler Elementary School

Access the parking lot from 2700 East just south of 7000 South. (Fort Union Blvd.)
We do not have a guarantee that cars won't be towed from here in the event of snow.

Fort Union County Parking lots

The numbers are for the WMC. Don't expect to see any numbered signs, these are basically wide pullouts on the north side of Fort Union Blvd. County time restrictions are to be followed, NO PARKING FROM 10 PM TO 8 AM.

Lot #1
3220 East Fort Union Blvd. (7000 South)
This lot will hold an estimated 5 cars.

Lot #2
3360 East Fort Union Blvd. (7090 South)
This lot will hold an estimated 10-15 cars.

Lot #3
3420 East Fort Union Blvd. (7140 South)
This lot will hold an estimated 7 cars.

Lot #4
3600 East Fort Union Blvd. (7225 South)
This lot will hold an estimated 10-15 cars.



WASATCH FRONT FORUM

WATERS OF THE WASATCH CANYONS:

They deliver the essence of life to threatened wildlife habitats and to the human inhabitants of our canyons and community.

There are many demands to use the water flowing from our beautiful Wasatch Canyons.

Tuesday Evening, February 10, 1998 - 7:00 p.m. - Free to the Public

Panel Discussion, Slide Show, Audience Questions and Refreshments
First Unitarian Church, Meeting Hall, 569 South 1300 East, Salt Lake City

- * How important is this water to the environment, to the residents, to the recreationists, and to the increasing demand for human developments?
- * Do fragile habitats exist in our canyons that rely solely on water for their existence? And, if so, would these fragile habitats be destroyed if the water were diverted or removed?
- * What are the pressures being faced by the U.S. Forest Service, Salt Lake City, other municipalities and Salt Lake County for use of the precious water in the canyons?
- * What requests are being made by developers for water and how is the City responding to these demands for water?

Come listen to our excellent group of panelists discuss these questions and explain many of the complex and controversial issues surrounding the importance and use of the waters of the Wasatch Canyons.

This program is sponsored by ***Great Salt Lake Audubon ("GSLA")***. For further information contact Ms. Penny Ciak, President GSLA, 265-0376, e-mail: pciak@zionsbank.com; or Wes Odell, Wasatch Front Forum, 943-3835, e-mail: fbyu80a@prodigy.com. **Tom Berggren**, member of the Salt Lake City Public Utilities Advisory Committee will moderate the program.

Panel Participants Include:

Frank Howe, Avian Program Coordinator, Utah Division of Wildlife Resources

Chad Gourley, Engineering Geologist - URMCC and Nature Conservancy

Florence Reynolds, SL City Public Utilities Dept., Water Quality Administrator.

Jane-John Doe, U. S. Forest Service

The Wasatch Front Forum, now in its sixth year, features 1997-98 meetings on the 2nd Tuesday of each month - Oct. through March. The "WFF" provides an opportunity for Utahns to learn more about the natural history of the Wasatch Front and the legal, political and social issues facing public land managers and local governments. The Forum is organized by the Citizens' Committee to Save Our Canyons and in 97-98 is supported in part by the UOICC, League of Women Voters, Predator Education Fund, Wild Utah Forest Campaign, GSL Audubon and the High Uintas Preservation Council. If you wish to comment on or participate in future forums or have your name placed on a mailing list, write to P.O. Box 58671, SLC, Utah 84158-0671; or contact Stephen W. Lewis 272-2598, Joyce Maughan 359-5900, or Wes Odell 943-3835.

Former forum sponsors include Friends of Great Salt Lake, Friends of the Uintas!, SLCounty Fish and Game Assoc., The Utah Chapter of the Sierra Club, The Utah Nordic Alliance, Utah Mt. Bike Assoc. Utah Rivers Council, Utah Wilderness Assoc. & Wasatch Mountain Club.

FRIENDS of Great Salt Lake
Presents The
SECOND GREAT SALT LAKE ISSUES FORUM

Saturday, February 21, 1998, 9:00 a.m.-5:30 p.m.
Quality Inn Center, 154 West 600 South, Salt Lake City

with generous support from:

Utah Wetlands Foundation, The Patagonia Outlet, The Nature Conservancy,
Parsons Brinckerhoff Quade & Douglas, Inc., Wasatch Touring, and Ventana
Genetics, Inc.

A forum to educate the public and encourage dialogue about the future of the Great Salt Lake ecosystem and its resources. Speakers will provide background information and discuss issues pertinent to the future of these resources, including parameters used to gauge their health and current planning efforts. Luncheon presentation by Ella Sorensen and John George on their new book, *Seductive Beauty of Great Salt Lake*.

ISSUES AND SPEAKERS:

Brine Shrimp Harvest and Research

Howard Newman, Inve Aquaculture Inc.
Doyle Stephens, United States Geological Survey
Gary Belovsky, Utah State University, Dept. of Fisheries and Wildlife
Joel Flory, Utah Division of Wildlife Resources, Great Salt Lake Project

Western Transportation Corridor/Legacy Highway

Byron Parker, Utah Department of Transportation
Michael Schwinn, U.S. Army Corps of Engineers
Roger Borgenicht, Future Moves Coalition

Emissions from Magnesium Corporation of America (MagCorp)

Scott Endicott, Citizens Against Chlorine Contamination
Dianne Nielson, Utah Division of Environmental Quality

Planning for the Future of Great Salt Lake

Ted Stewart, Utah Department of Natural Resources
Robert Adler, University of Utah College of Law

Low-Impact Visitor Access and Education at Great Salt Lake

Jayne Belnap, United States Geological Survey
Tim Smith, Antelope Island State Park
Ted Wilson, Salt Lake City Futures Commission

Pre-registration is required by February 17th, 1998.

Please send check for \$25.00 (\$20.00 for FOGSL members) to:

**Friends of Great Salt Lake
P.O. Box 2655, Salt Lake City, UT 84110**

*For more information call Lindsey at 801-363-3488. \$30.00 at the door.
Cost includes lunch and snacks. Some scholarships are available, please call.*

*The mission of FRIENDS of Great Salt Lake is to preserve and protect the Great Salt Lake ecosystem and to increase public awareness of the lake
through education, research, and advocacy.*

TRIP TALKS

Greens Basin Ski Tour D.X. Ross

It was a beautiful day Saturday morning, November 29, that Bee Lufkin led a small group of X-C skiers up to Green's Basin and back; Susan McDaniel, on her second WMC qualifying event in two days; Nancy Ivy, taking a rare break from her graduate studies; Louise Rausch and Gary Stout, egging each other on to ski better and better; Peter Hansen, who has wings on his skis; and little ole me, out for my first ski of the season.

Starting at the Spruces, we skinned up this north facing slope, following some snowshoer's tracks until we reached the fire road. We looked over to the other side of the canyon. It was strikingly snowless! At a sunny spot where we regrouped on the ascent Peter gave us a Samba Demonstration on skis, complete with the appropriate sound effects. I showed a Tango and we proceeded on up with a Latin beat.

Suddenly we arrived at our destination. Greens Basin was quiet and beautiful. We marveled at the hoarfrost, fragile ice fins clinging to dry plants and projecting from the snow's surface making it look like magnified fleece. Unfortunately our telemark ski lesson was canceled - not enough snow. Plants and rocks were not safely covered by adequate snow. Our picnic, however, went ahead, on schedule, on a sunny slope.

After lunch we removed our skins for the Main Event. There was lots of laughter and kidding as we all made it back down, somewhat along the way we had gone up. Everyone fell, and laughed some more (except Peter who doesn't fall). We all had a great fun time. Thanks, Bee!

Participants: Susan McDaniel, Nancy Ivy, Louise Rausch, Gary Stout, Peter Hansen, D.X. Ross, and Bee Lufkin, leader.

LAKE MARY PHOTOS



WMC members near Lake Mary on New Year's Day. Photos by Erica Myran

ANTELOPE ISLAND HIKE

by Randy Long

The loop trail to Beacon Knob, on Antelope Island was an intermediate hike.

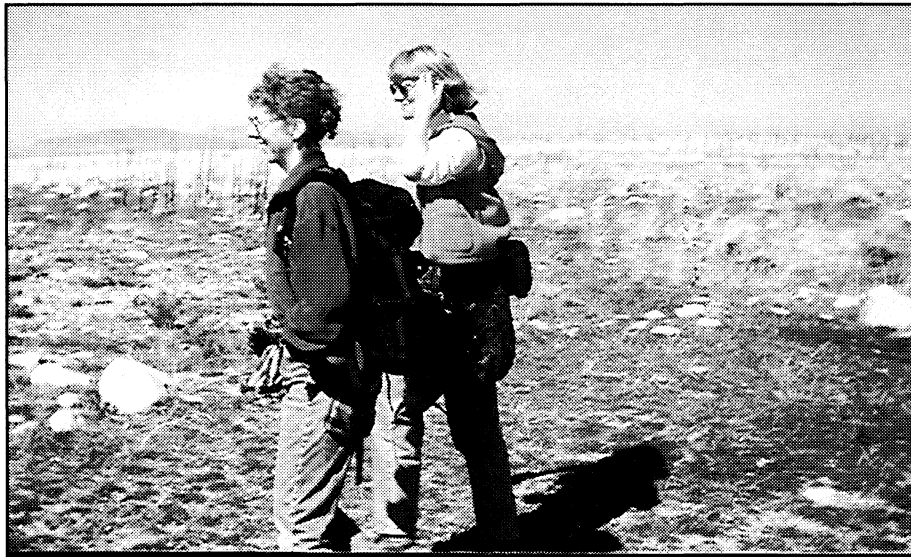
Due to the I-15 construction, the meeting time was set for 10:00 rather than 9:30, and we still had plenty of time to enjoy the hike.

It was a great day for one final hike of the year, especially after a big storm just the week before.

We went east to west as that seems to be the best way for several reasons, and ate lunch at Beacon Knob. Beacon Knob really does have a beacon, and two or three small buildings that accompany it. Beacon Knob serves as the high point on the trail, both for elevation, and scenery.

A couple of participants than took a side trail. Unfortunately, they neglected to let the trip organizer know before they disappeared. Although they did make it back safely, should an accident have happened, we wouldn't have known where to find them. A word of caution for future participants--please let your trip organizer know if you are heading off on your own.

The rest of us then enjoyed a leisurely hike back along the lakeshore, and enjoyed seeing some buffalo on the drive back to the trail head.



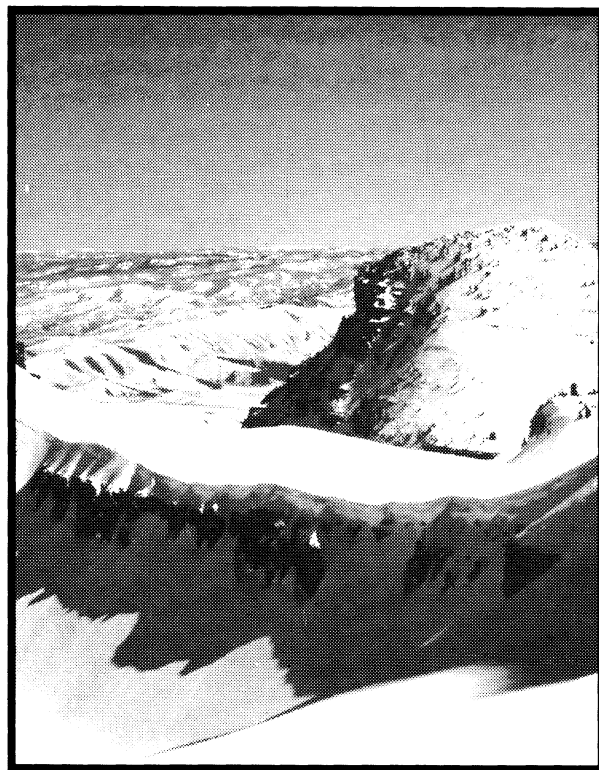
**Mary Ann Losee and Julie Malecki enjoying the view from Beacon Knob
photo by Randy Long**

Rangers have also told me that next year they're going to pave the road part way down the east side of the island, and that a trail to Frary Peak, (the highest point on the island), will be blazed and built. The addition of the new trail will add yet another enjoyable reason to visit Antelope Island.

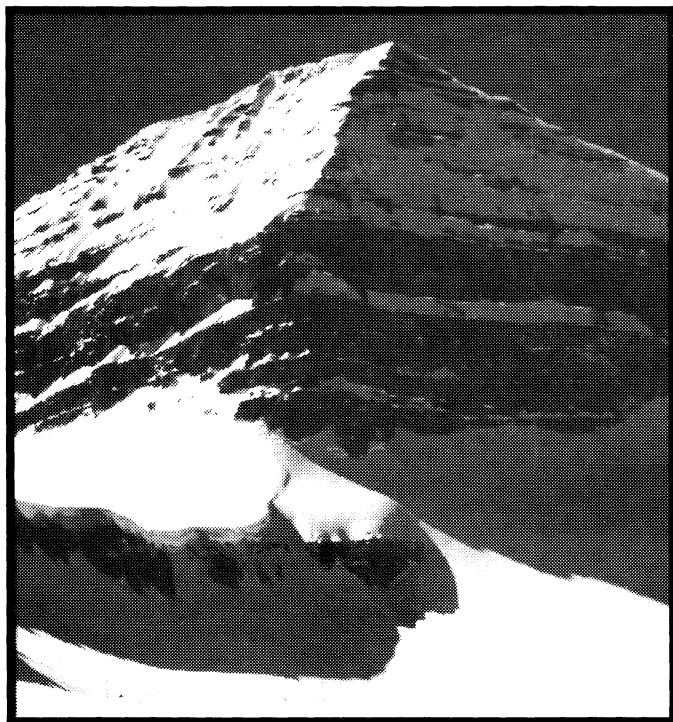
Participants included Patty Aiken, Linda Gurister, Ginger Lee, Mary Ann Losee, Julie Malecki, Ray Malecki, Steve Spear, Roger Upwall, and Randy Long, organizer



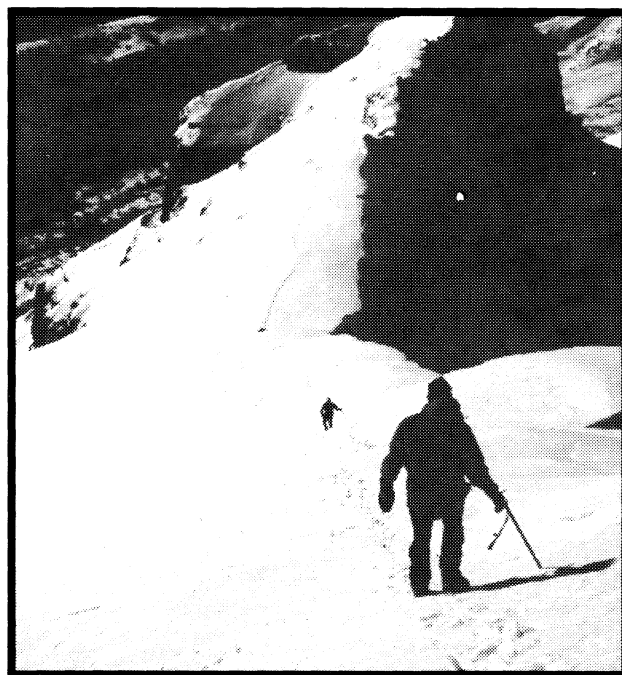
Heading down towards Saddle on Timpanogos



Looking East from near the Saddle on Timp



Timp Summit



Dave, George heading down from Timp

ACTIVITY SURVEY

WOULD YOU LIKE TO LEAD?

All of the Club's activity leaders are volunteers. You can be a leader too—just check off the activities you want to lead, and we'll give you a call. Help your Club and have fun too!

- Hiking:** ☐ easy day hike ☐ moderate day hike ☐ advanced day hike ☐ car camp
 ☐ backback
- Boating:** ☐ trip leader ☐ instruction ☐ equipment ☐ sailing
- Skiing:** ☐ NTD tour ☐ MOD tour ☐ MSD tour ☐ out of town trip
- Climbing:** ☐ Wasatch climb ☐ out of town trip ☐ winter mountaineering
- Bicycling:** ☐ road bike tour ☐ mountain bike tour ☐ camping tour
- Other outings:** ☐ snowshoe tour ☐ caving ☐ other

WOULD YOU LIKE TO SUPPORT?

The Club also depends on volunteers for all the rest of its work. Some of this work is critical to the day-to-day functioning of the Club; some of it is important to our community; some of it is just fun. You can let us know how you'll help by checking off activities below.

- Conservation:** ☐ air and water quality issues ☐ trailhead access ☐ wilderness
 ☐ telephone tree ☐ trail clearing
- Socials:** ☐ social host ☐ Party assistance ☐ lodge host
- Rambler:** ☐ word processing ☐ mailing ☐ advertising ☐ computer support
- Lodge:** ☐ general lodge repair ☐ skilled lodge work
- Information:** ☐ public relations ☐ membership help ☐ recruiting ☐ instruction

Would you like to participate on an activities committee? Which one?

Is there a special trip or activity you would like to lead?

What phone numbers can we use to reach you?

Please Complete Both Sides

Wasatch Mountain Club
New Member/Reinstatement of Previous Members Application
Do Not Use this Form for Regular Annual Membership Renewal

Please read carefully and fill out completely.

Name(s) _____
(First) (Last)

Address _____ City _____ State _____ Zip _____

Check phone number ☐ Residence: _____ Other ☐ Do not print my name/phone in membership list.
to print in **Rambler** membership list: ☐ Work: _____ Options: ☐ Do not list my name in lists given to Board
e-mail: _____ approved conservation/wilderness organizations.

I am applying for:

Check one:

____ New Membership
(Please complete activity section.)
____ Reinstatement

____ Single Birth date(s) _____
____ Couple _____
____ Student (30 years or younger)

Remit: \$35.00 for single membership (\$30.00 dues, plus \$5.00 application fee)
\$50.00 for couple membership (\$45.00 dues, plus \$5.00 application fee)
\$20.00 for student membership (\$15.00 dues, plus \$5.00 application fee)

Enclosed is \$ _____ for one year's dues and application fee. Checks/money orders only. Make checks payable to **Wasatch Mountain Club**. Do you wish to receive the **Rambler** (the Club publication)? ____ Yes ____ No
(Subscription price is NOT deductible from the dues.)

Activity Section

You must complete two Club activities (other than socials) to be considered for membership. The activity dates must have been within one year of the application.

Qualifying Activity

Date

Signature of Recommending Leader

1. _____
2. _____

I found out about the WMC from _____

Mail application and check to: Membership Director
Wasatch Mountain Club
1390 South 1100 East, Suite 103
Salt Lake City, UT 84105-2443

Leave Blank—For Office Use Only

Receipt/Check # _____ Amount Received\$ _____ Date Received _____ By _____

Board approval date _____

WASATCH MOUNTAIN CLUB (WMC)

Applicant Agreement, Acknowledgment of Risk, and Release from Liability

VOLUNTARY PARTICIPATION: I acknowledge that my participation in any WMC activity is voluntary. No one is forcing me to participate.

ASSUMPTION OF RISK: I am aware that WMC activities involve risks, and could result in injury, illness, death, and damage or loss of property. These dangers include but are not limited to: the hazards of traveling in remote areas without medical services or care, the forces of nature, the inherent dangers involved in participation in sports, wilderness travel, and social activities, and the negligent actions of other persons or agencies. I understand that all activities should be considered "exploratory", with the possibility of unexpected conditions and route variations. The WMC is not, nor does it provide, a professional guiding service. In order to partake in the enjoyment and excitement of WMC activities, I am willing to accept the risk and uncertainty involved as being an integral part of the activity. I acknowledge this risk, and assume full responsibility for any and all risks of injury, illness, death, or damage and loss to my property.

I verify this statement by placing my initials here: _____

PREPARATION: I understand that it is my responsibility to evaluate the difficulty of any activity I participate in, and decide whether I am prepared by having the experience, skill, knowledge, equipment, and the physical and emotional stamina to safely participate.

RELEASE OF LIABILITY AND PROMISE NOT TO SUE: I agree that I, my heirs, and personal or legal representatives hereby do release and hold harmless from all liability, and promise not to bring any suit or claim against, the Wasatch Mountain Club, its leaders, directors, agents or representatives for any injury, illness, death, or damage and loss to property resulting from my participation in any WMC activity even if they negligently caused the injury or damage.

LEGAL FEES: Should it become necessary for WMC, or someone on their behalf, to incur attorney's fees and costs to enforce this agreement, I agree to pay WMC reasonable costs and fees thereby expended, or for which liability is incurred.

INSURANCE: I certify that I have sufficient insurance to cover any bodily injury or property damage that I may incur while participating in any WMC activity. If I have no such insurance, I certify that I am capable of paying for all such expenses and liabilities.

My signature below indicates that I have read this entire document, understand it completely, understand that it affects my legal rights, and agree to be bound by its terms. I am at least 18 years old.

Signature _____ Print name _____

Address _____

Phone _____ Date _____

WITNESS: I certify that _____ has alleged to me that he/she has read and understands this document.

Witness signature _____ Print name _____

Address _____

Phone _____ Date _____

THE WASATCH MOUNTAIN CLUB

Membership applicants must participate in at least two Club outdoor or service activities. Yearly dues are \$30 single, \$45 couple, \$15 student, \$5 application and reinstatement fee.

GOVERNING BOARD 1997-98

President and Directors

President	943-1871	Linda Kosky
Vice President	969-5842	Tom Walsh
Secretary	262-6698	Sam Kievit
Treasurer	969-2825	Bob Janzen
Membership Dir. 1-800-312-0079		Robynn Sisam
Hiking Director	968-1252	Martin Clemans
Boating Director	292-8332	Vera Sondelski
Conservation Co-Dirs.	521-8554	Susan Sweigert
	521-4185	Brad Yates
Entertainment Co-Dirs.	583-8133	Lori Ball
	973-7984	Patti O'Keefe
Lodge Co-Directors	523-0790	Bill Hughes
	278-4753	Julie Jones
Mountaineering Co-Dir	942-0641	Alan Lindsay
	233-9404	Doug Harris
Publications Co-Dirs.	277-4652	Kathy Anderson
	649-9504	Rob Merritt
Winter Sports Dir.	969-5842	Tom Walsh
Bicycling Dir.	298-1814	Tim Boschert
Information Co-Dirs.	277-1043	Carol Coulter
	882-4108	Carol Milliken

TRUSTEES

1997-01 term	649-6805	Vince DeSimone
1994-98 term	484-2338	Leslie Woods
1995-99 term	943-8500	Phyllis Anderson
1996-00 term	278-5826	John Veranth
<i>Emeritus</i>	355-7216	O'Dell Petersen
<i>Emeritus</i>	277-6417	Dale Green

COORDINATORS

(under boating director)		
Canoeing	255-4336	Eileen Gidley
Kayaking	364-4820	Chuck Howisey
Sailing	649-6805	Vince DeSimone
Rafting	944-8619	Gene Jarvis
Boating Equ.	273-0369	Marilyn Smith
	273-0369	Bob Grant
Boating Instr.	322-4326	Janet Embry
River Issues	486-1476	Allan Gavere
(under winter sports director)		
Snowshoeing		Larry Nilssen
Ski Touring		Tom Walsh
(under bicycling director)		
Mountain Biking		<vacant>
(under entertainment directors)		
In-Line Skating		Dave Vance
(under information directors)		
Adopt-A-Highway	943-0244	Randy Long
Webmaster	(503) 690-1823	Tony Ackerman
(under publications directors)		
Commercial Adv.	583-1678	Jaelene V. Myrup
Rambler Mailing		<vacant>
(under conservation directors)		
Trails Issues	364-5729	Chris Biltoft

Commercial Advertising

The Rambler encourages and supports your products and services through pre-paid commercial advertisements. Advertisements must be camera ready and turned into the advertising director no later than the 15th of the month prior to publication. Prepayment is necessary for single month advertisements with invoicing and net 30 for repeat advertisements. Contact the Commercial Advertising Coordinator for information or to place an ad.

Full Page	\$95.00	7" x 9"
Half Page	\$50.00	7" x 4.5" Horizontal 3.5" x 9" Vertical
Quarter Page	\$30.00	3.5" x 4.5" square 7" x 2.25" horizontal 2.25" x 9" vertical
Business Card	\$15.00	3.5" x 2"

**AVALANCHE AND MOUNTAIN
WEATHER INFORMATION
IN
SALT LAKE CITY
364-1581**



check the
web
[www.digital
pla.net/~
wmc](http://www.digitalpla.net/~wmc)

**PERIODICALS
POSTAGE PAID
SALT LAKE CITY, UT**

**WASATCH MOUNTAIN CLUB
1390 South, 1100 East
Salt Lake City, UT 84105**