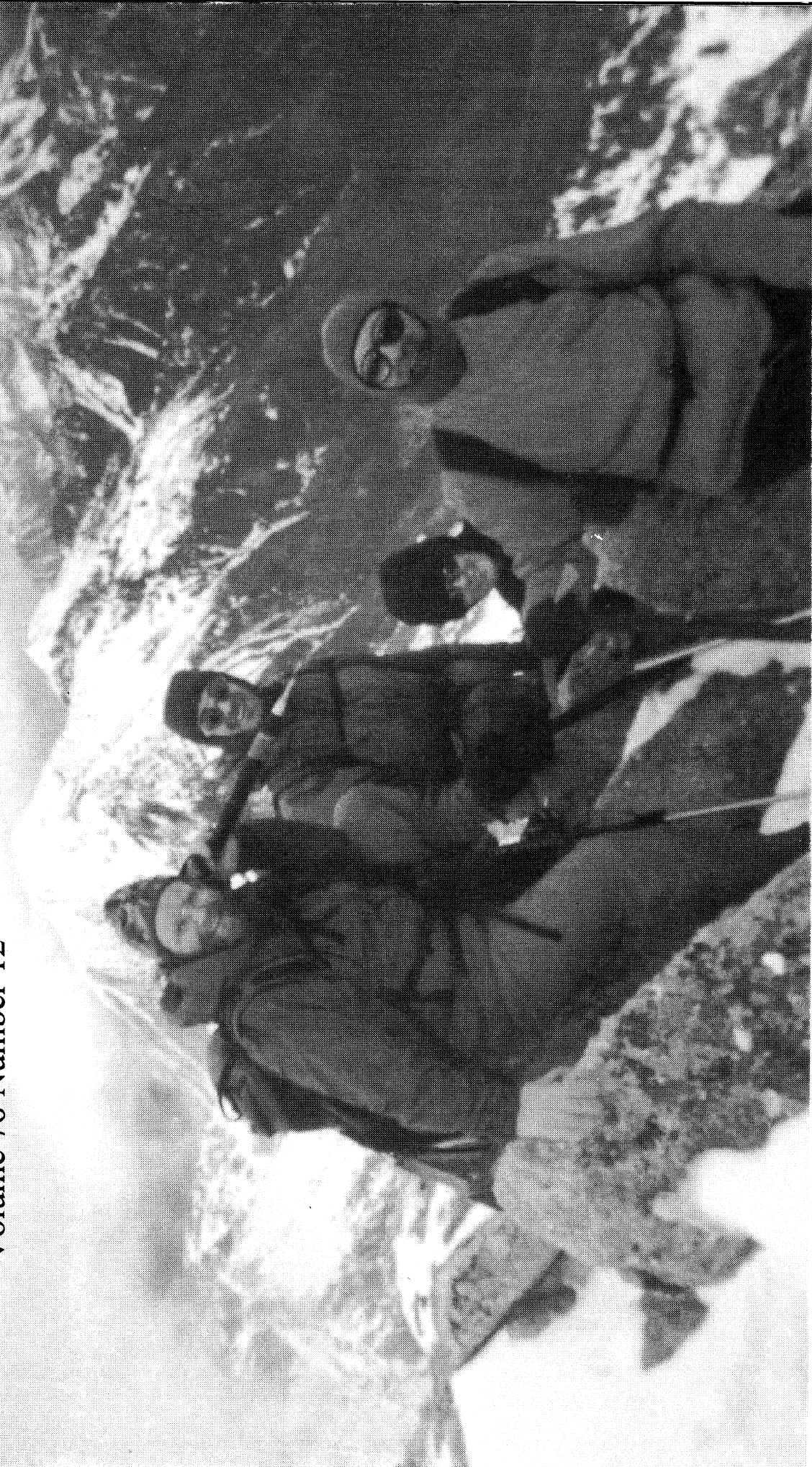


The Rambler

December 1999

Volume 76 Number 12



Managing Editor
Bob Janzen

ADVERTISING Jaelene V. Myrup (583-1678)
 ACTIVITIES EDITOR Rob Merritt (537-7969)
 FEATURES EDITOR Howard Barlow (328-4701)
 MAILING Chris Venizelos (364-4544)
 PRODUCTION Bob Janzen (568-9832)

The *Rambler* (USPS 053-410) is published monthly by The WASATCH MOUNTAIN CLUB, Inc., 1390 S., 1100 E., Suite. 103, Salt Lake City, UT, 84105-2461, (463-9842.) Subscription rates of \$12.00 per year are paid for by membership dues only. Periodicals Postage Paid at Salt Lake City, Utah.

POSTMASTER: Send address changes to *The Rambler*, Membership Director, 1390 S, 1100 E., Salt Lake City, UT 84105-2443. CHANGE OF ADDRESS: This publication is not forwarded by the Post Office.

The right is reserved to edit all contributions and advertisements and to reject those that may harm the sensibilities of WMC members or defame the WMC.

Copyright 1999 Wasatch Mountain Club

Office Telephone 463-9842
 Address: 1390 S. 1100 E., Suite 103
 Salt Lake City, UT 84105-2443
 WMC Home Page
www.xmission.com/~wmc

PROSPECTIVE MEMBER INFORMATION

Applicants must attend two official WMC activities other than socials. Activities are listed in *THE RAMBLER*, an official publication of the Wasatch Mountain Club, published by and for its members. Prospective members may receive *THE RAMBLER* for two months by writing the Membership Director at the above address and enclosing a check for \$5.00 payable to the Wasatch Mountain Club. (There is a \$10.00 charge for returned checks.) An application form may be found in the center of *THE RAMBLER*. Ask the activity trip organizer to sign your form after completing the activity.

MEMBERS: If you have moved, please call the WMC office or send your new address to the Membership Director. Allow 45 days for address changes. **If you did not receive your RAMBLER, contact the Membership Director** to make sure the WMC has your correct address. Replacement copies are available, while they last, at the WMC office during office hours.

TO SUBMIT AN ARTICLE or PHOTOGRAPH:
 Articles/photographs may be submitted in any of the following ways:

1. Email submissions as an attachment to wmc@xmission.com. (Please do not email photos, jpgs, etc.)

2. Mail submissions to the Publications Director at the office address
3. Hand deliver them to the WMC office between the hours of 8 am and 5 pm weekdays. (The building is generally closed and locked evenings and weekends.) Leave hand deliveries in the **Blue** box outside the office door.

If on diskette, please use 3.5" diskettes, MS/DOS format, and in Microsoft Wordpad, Microsoft Word or WordPerfect format. **For activity submissions, please do not use any special formatting other than bolding the text.** Use Times Roman font, 10 point for all submissions. Label the diskette with your name and identify what file(s) are submissions. You may want to enclose a hard copy in case your diskette cannot be read. The deadline is 6:00 PM on the 15th of the month.

Photos will be accepted. Make sure that each photo is labeled with the photographer, date, and names of people. Unless a stamped, self-addressed envelope is provided, returned submissions will be available in the **Red** bucket outside the WMC office door. If you want to get your photo(s) returned to you by mail, please label each photo with "Return to (your name and address)."

WMC Purpose

(Article II of the WMC Constitution)

The purpose shall be to promote the physical and spiritual well being of its members and others by outdoor activities: to unite the energy, interests and knowledge of students, explorers and lovers of the mountains, deserts and rivers of Utah; to collect and disseminate information regarding the Rocky Mountains in behalf of science, literature and art; to explore and picture the scenic wonders of this and surrounding states; and to foster awareness of our natural areas including their plants, animal and bird life.

INTERNET
 PROPERTIES INC.

51 EAST 400 SOUTH, SUITE 210

SALT LAKE CITY, UTAH 84111

PHONE 801/364-4544

FAX 801/363-6869

CHRIS VENIZELOS
 REALTOR



Cover Photo: South Summit of Lone Peak, June 6, 1999, L-R: Brad Yates, John Kokinis, Beth Drees, Tom Walsh. Photo by Frederick Gabriel.

NAKED

R

WARMTH

Regulator™

New Regulator™ insulation won't weigh you down, melt you down or blow the zippers off your pack.

Enlightenment

attained: First came fast-wicking underwear, then agile, easy-moving stretch shells. With Polartec® Regulator insulation, the midlayer reaches the same high level of performance. Now you can dress from the skin out in clothes that wear lightly and take up little space in your pack.

Regulator insulation is as soft as traditional fleece, but warmer, lighter and far more compressible. It also breaths better, allowing you to freely vent moisture in warmer temperatures and at higher exertion levels. This means you need fewer layers to stay comfortable.

Exclusive Product by
patagonia®

R1

For Cross-Country Skiing, Climbing, Snowshoeing or Mountain Biking

Zip-T - 82.50**Pants - 75.00****R2**

For Telemark Skiing, Ice Climbing, Kayaking or Mountaineering

Jacket - 120.00**R3**

For Mountaineering, Backcountry Boarding, and Skiing

Jacket - 134.00

Kirkham's®
outdoor products

3125 So. State 486-4161 www.kirkhams.com

NEW EXTENDED HOLIDAY HOURS: Mon.-Sat. 9:30 to 9:00 Sun. 11:00 to 6:00

Bulletin Board

WMC LODGE AVAILABLE FOR RENTAL USE

The WMC Lodge can be rented on a full or half day basis. Full day rate is \$250. Contact Julie Mason at 278-2535 for information.

BOATING REQUIRES A LEADER

Vera has done a great job as Boating Director over the past years. She has led the boating group to new boats and a greatly increased quantity of trips. Now she is unable (not unwilling) to continue in this post. WE NEED A LEADER. There are a number of people who have helped Vera over the past year and will continue in their positions. The Boating Director supplies the leadership and overall coordination and we worker bees do the rest. So--- Come on and volunteer for this position.

MOST IMPORTANT BOATING EVENT OF YEAR

Permit Party. Join us Thursday Dec. 9 to ensure a great year 2000 boating season. See details in "Activity Schedule"

Nominations are open for the 2000-2001 governing board. All positions are open for election. Qualifications for President, Vice President and Trustee are five years of membership and previously holding a board position. Other offices are open to all members in good standing. Please volunteer by calling one of the nominating committee members: Leslie Woods, chair, 266-3317; Craig McCarthy, 424-2376; or Kyle Williams, 886-0159. Listed below are the positions and present candidates.

President	Brad Yates (incumbent)
Vice President	Appointed by the Board
Secretary	Vacant
Treasurer	Kathy McKay (incumbent)
Bicycling Director	Tim MacDonald
Boating Director	Vacant
Conservation Director	Susan Swiegert (incumbent), John Veranth
Entertainment Directors	Carol Ann Langford and Martin Clemans (incumbents)
Hiking Director	Vacant
Information Director	Pamela Hale
Lodge Directors	Linda Kosky and Bill Hughes (incumbents)
Membership Director	Carol Coulter (incumbent)
Mountaineering Director	Walt Haas (incumbent); (looking for co-director)
Publications Director	Jeanette Buenger
Winter Sports Director	Vacant
Trustee 2000-2004	Leslie Woods

ANNUAL AWARDS BANQUET & BALL

Saturday - January 22, 2000

6:00PM - Midnight

DOUBLETREE HOTEL BALLROOM

255 S. West Temple (FREE Parking!)

* Dining *Recognition Awards *Cash Bar *Board Nominations
*Dancing to music of Tony Summerhays

Enjoy this 1st social of the millennium
dining & dancing with your WMC friends!

Semi-formal attire is requested
Your non-WMC friends are welcome to attend

COST: \$24/person in advance

Reservation form with payment MUST be received by January 16th. Make checks payable to Wasatch Mountain Club. Questions?? Call Carol Ann (255-4713). Mail to:

Carol Ann Langford
WMC Entertainment Director
6897 Country Woods Circle #G
Midvale, UT 84047

CUT & MAIL

Registration for WMC 2000 Awards Banquet & Ball

Your name _____ No. of attendees _____

Name of guest(s) _____

Entree preference: _____ Marinated London Broil
_____ Stuffed Grilled Chicken Breast
_____ Vegetarian (stuffed portebella mushrooms
with Swiss chard/spaghetti squash)

WASATCH MOUNTAIN CLUB ACTIVITIES

Only activities approved by the appropriate WMC director can be listed in the Club activities section of *The Rambler*. Send your proposed activity for approval to the hiking, boating, skiing, etc., director for inclusion in their activity schedule. Those activities sent directly to *The Rambler* without approval will not be published.

Dogs and children are not allowed on WMC activities, except when specifically stated in the activity description.

*** Participation in any WMC activity can be dangerous. It is **your** responsibility to evaluate your own preparedness and ability to safely participate in any activity.

+++ Ratings: EL=Entry level NTD=Not too difficult MOD=Moderate MSD=Most difficult EXT=Extreme

Car pool rates: Gas plus \$.15/mile, shared by everyone in the vehicle (including the driver) on 2WD roads, or gas plus \$.25/mile on 4WD roads **OR** \$.08/mile/person on 2WD roads shared by everyone in the vehicle.

*Notice to Non-Members:

Prospective members must attend, and have trip organizers sign, two qualifying activities (not socials) prior to submission of an application for membership. Most WMC activities are open to prospective members as one of the two qualifying activities for membership, except when specifically stated in the activity description. Weekend outings count as both qualifying activities. Membership fees will be included as part of the trip costs for prospective members participating in WMC weekend functions.

ACTIVITY SCHEDULE

DEC 1 WED

CLIMBING - WASATCH FRONT CLIMBING GYM

- **BEGINNERS WELCOME!** Join us any time after 7:00 PM for an evening of indoor climbing at 427 West 9160 South. Cost is \$8.00 per visit, or monthly memberships are available. Kids are welcomed, but they must be accompanied and supervised by an adult. Rental gear is available. Since this is a professionally monitored, controlled environment, helmets are not required. Call the gym for the best way to get around the construction. If you've never been to a gym before, WMC members will be on hand to help you out. Call Kristen Keefe (484-8729) if you have questions.

DEC 4 SAT

SNOWSHOE: GRIZZLY GULCH (MOD-) As the swallows return to Cappuccino (for a swallow of cappuccino, of course) Gretchen Siegler (557-0772) has chosen to return to Grizzly Gulch, a "narrow gulch rich in mining history." for the view of Albion Basin, Twin Lakes and Brighton ridgeline behind. Call first if snow is a problem. Butler Elementary at 9AM.

DEC 4 SAT

SKI BACKCOUNTRY: DOG LAKE via MILL D NORTH FORK (NTD) A good time will be had by all, if you join up with Mike Budig's outing to Dog Lake. The mostly smooth trail goes 6 miles round trip and gains about 1400 feet of elevation. Mike plans to leave from the

rendezvous at Butler Elementary School at 2700 East and 7000 South at 9:00 am. Bring skins and lunch. Metal edges skis are best. (Ph 328-4512)

DEC 4 SAT

SKI BACKCOUNTRY: ORGANIZERS CHOICE (MOD) By this time in the ski season, perhaps the snow on Reynolds Peak or maybe in Powder Park will be deep enough to work. Join Tom Walsh and check it out. Meet at Butler Elementary at 9:00 am. Bring the 10 essentials plus skins, radio beacon, rescue shovel, and victuals. Call 969-5842 for info.

DEC 5 SUN

SKI BACKCOUNTRY: ORGANIZERS CHOICE (MOD+) Wherever the snow is steep and deep is where you will find Edgar Webster. Call to register for a fine alpine skiing experience. Phone 486-7829 to get the meeting place and time.

DEC 5 SUN

SNOWSHOE: DOG LAKE TO REYNOLDS (MOD) This is it! Mohamed Abdallah's (466-9310) warm-up hamstring stretcher - the first of the "wanderings" in this snowshoe friendly area of hills, ridges and spectacular views of the Wasatch in the background. Can't wait. Call if no snow. Butler Elementary 9 AM.

DEC 5 SUN

SNOWSHOE: MILL CREEK (NTD) DOGS OK Join Barbara Petty and "Snickers", the Border Collie for the premier dog trek through the wilds of Mill Creek Canyon. Dogs not really necessary, but if you have one, please bring a cleanup bag or a big pocket (to share). NOTE: Skyline High at 9AM.

DEC 8 WED**CLIMBING - WASATCH FRONT CLIMBING GYM**

- Join us any time after 7:00 PM for an evening of indoor climbing at 427 West 9160 South. Cost is \$8.00 per visit, or monthly memberships are available. Kids are welcomed, but they must be accompanied and supervised by an adult. Rental gear is available. Since this is a professionally monitored, controlled environment, helmets are not required. Call the gym for the best way to get around the construction. This week there may or may not be a WMC host. You may be on your own but it still beats sitting around watching TV. Call Alan Lindsay (942-0641) if you have questions.

DEC 8 WED**ANNUAL ROBERT FROHBOESE AVALANCHE**

CLINIC Are you a skier? A snowboarder? Do you venture out on our mountains on snowshoes? Then this clinic is a MUST for you. Every year tragedy strikes in our mountains - Learn how NOT to become a victim. An excellent clinic on backcountry avalanche awareness will be conducted by Bruce Tremper of the Utah Avalanche Forecast Center at 7:00 pm at the Zion Lutheran Church at 1070 S Foothill Blvd. A donation of \$5.00 is suggested. An avalanche beacon practice is scheduled for the following Sunday. Call Edgar Webster (486-7829) for more information.

DEC 9 THUR

BOATING: PERMIT PARTY (I) Permit party to plan for 2000 Boating Season. We Need YOU to request permits for the 2000 boating season. Please! Please! Attend this Very Important Event. Date: Thursday, Dec 9; Time: 6:30 PM; Place: Janis Huber's house at 2922 S. Zenith Circle. Janis has again graciously offered to host us at her house. **BRING:** snacks, personal calendars, checkbook and most importantly a willingness to apply for permits. **PRE-PARTY PREPARATION!!!** We need help getting cards for San Juan, Westwater & Deso. Please write for one - even if you don't know if you'll need it - someone else can use your card. Thanks. Janet will have copies of the info for Idaho and Dinosaur. If you need a copy of the permit information, Call Bart at 277-4093 or E-mail bartbartholoma@netscape.net and I will E-mail or regular mail a copy to you.

DEC 10 FRI**CLIMBING - ADVANCED SKILLS CLASS/PARTY #3**

Note: New Location! When bad things happen to good climbers. This is the third of a monthly series of parties/classes we're holding through the winter, working on various advanced skills they don't teach in the gym. This month we will explore a few techniques out of Chockstone's "Self-Rescue" book. Bring your harness,

belay device, slings, cordelette, food, drinks, etc. Meet at Leslie Gidding's (583-4271) - 6660 Killyon Canyon at 7:00 PM. Directions: Drive up Emigration Canyon from 8th So. At 5-6 miles you come to a "Y" in the road. The right of the "Y" takes you over to I-80. The left goes to Pinecrest. Take the left. Go 1/2 mile. Go right at a second "Y" by a row of mailboxes to Killyon Canyon (unsigned). Go 1/2 mile, part asphalt and part dirt. Her house is the last one on the right. A railroad tie at the bottom of the driveway has house numbers on it.

DEC 10 FRI

4TH ANNUAL HOLIDAY PARTY - 7:00PM Gary and Jane Myers invite you to their 4th Annual Holiday Party. BYOB. Soft drinks and light buffet will be provided. Bring your own added dish or dessert. Bring your favorite calendar to share with others (those at the first annual party will understand). Sit by the fire, talk, and maybe even go carolling. A warm night is planned for all. RSVP 282-5834 5317 W. Wheatridge Lane (7800 S. to Bingham Highway-left fork Southwest to Grizzly Way-Northeast of Copper Hills High School (5400 West), turn right on Grizzly Way and then right again on Wheatridge Lane.)

DEC 11 SAT

SNOWSHOE: RED PINE (MOD) Welcome Shawn Bodine (553-0153), a personable engineer who moved here from Corpus Christi and discovered something: a fantastic snow experience. Join him on his first tour, to Red Pine. Bring your favorite electrical engineering questions. Meet at Butler Elementary, 9AM. Wilderness considerations in effect.

DEC 11 SAT

SKI TOUR: ALBION BASIN ROAD (NTD) Mary Ann agreed to organize a trip that won't kill you from overwork or a pace that is overly fast. The Albion Basin Road has a grade so moderate that you could easily mistake it for flat. (This is a perfect outing for a beginner.) About any kind of ski will be suitable here. As a bonus when the skiing is done the group will stop at Albion Basin Ski Lodge for hot beverages. Meet at the Butler Elementary School at 9:00 am. For information call Mary Ann Losee at 278-2423.

DEC 11 SAT

3RD ANNUAL TURKEY SNOWSHOE SING ALONG 1PM SNOWSHOE OR 5:30PM DINNER @ LODGE Meet at 1PM at Lodge for snowshoeing (BEG, NTD and MOD) to Catherine Pass (carpoolers may meet at Butler Elem School at 12PM--organizers will not be there but you may meet someone to share ride). Potluck dinner (hosts will provide 3 turkeys & a ham) at 5:30PM with Christmas carols after dinner (bring your voice or instrument...expertise optional). Please bring festive side dish to share with 6-8 people + BYOB. Supervised children are welcome. Lodge available for overnight (\$3)--must be out by 9:30AM Sunday. Games & puzzles available at Lodge for those staying

indoors. Members \$3; non-members \$4. Hosts are Frank Bernard, Bart Bartholoma, LaRae Cunningham, Carol Ann Langford, Dudley McIlhenny, Christine Allred and Mark Jones. If questions, call Frank (533-9219). Remember your flashlight! If canyon is closed event will be cancelled--otherwise it's a go! COME CATCH THE HOLIDAY SPIRIT!!

DEC 12 SUN

AVALANCHE TRANSCEIVER PRACTICE This radio beacon practice is in conjunction with the Clinic on the previous Wednesday. Listening to a lecture or a video is not enough. To have any level of skill at avalanche rescue you must practice out in the snow. Meet at the Butler Elementary School at 9 am for a 3 or 4 hour practice session. Bring skis or snowshoes for mobility on the snow. If you want to go out on a short ski outing afterwards, bring lunch and the usual skins, shovel, and your transceiver. Snowshoers are welcome to organize a post-clinic hike also. For questions, (such as, what day is this really on?) call Tom Walsh 969-5842.

DEC 11 SAT

SKI TOUR: LILY LAKE (UINTAS) NTD The Bear River Outdoor Recreation Alliance (BRORA) runs a great yurt system south of Evanston on the Mirror Lake Highway. Mike Berry (583-4721) plans to drive to the trailhead (East Fork Campground) to arrive at 10am, join BRORA, ski the "circuit" of 4 yurts (8 mi. RT) and get an "orientation". You can then reserve really excellent, cheap, and dog-friendly yurts with a \$10 membership. Mike plans to leave the Parley's Way Kmart at 7:30 am sharp. Snowshoes ok too!

DEC 12 SUN

SKI TOUR: SHOW 'N GO Due to uncertain early snow prognostications and reluctant organizers, we are posting this Uintas Show 'N Go notice. Anyone want to kick and glide today? Beaver Creek Trail?, Norway Flats?, Little South Fork? If the snow flies, show up at the K Mart parking lot on Parley's Way at 8:30 am. Bring \$3.00 per car for the Forest Service toll booth, and one release form for the group.

DEC 12 SUN

SNOWSHOE: ORGANIZERS CHOICE (MOD) (957-3238) Snow and avalanche conditions, weather, wind, magnetic storm and the jet stream will all influence Carolyn Clarks' (957-3238) choice of destination. Come, enjoy the spontaneity of the moment. Butler Elementary, 9 AM.

DEC 12 SUN

SNOWSHOE: MINERAL FORK (NTD+) Loraine Lovell (272-4601) has scheduled this snowshoe

immediately after a Saturday night Christmas Party! The pace will be therapeutic and recuperative. The snow and environs delightful. Trust us. Butler Elementary, at the therapeutic hour of 9:30 AM

DEC 12 SUN

SKI BACKCOUNTRY: POWDER PARK (MOD) When we planned this outing there was zippo snow. However, Organizer Dave Vance feels sure there will be ample coverage for cutting some turns at our favorite backcountry slope. Meet Dave at Butler Elementary (7000 South and 2700 East) at 9:00 am. Bring transceiver, skins, and shovel, plus all the other normal stuff like food, water, wool shorts, etc. (Phone (801) 444-0315)

DEC 12 SUN

SKI BACKCOUNTRY: WOMEN'S TELEMARKE DAY (NTD / MOD / MSD) In response to the enthusiastic participation of previous seasons Wasatch Women's Telemark Days, Wasatch Telemark is doing it again. There will be two full days of clinics, workshops, and apres ski fun at two of Utah's premier resorts. Alta will host on Dec 12 and Deer Valley will host on Jan 22. Agenda at Alta is Registration from 8 to 9 am. Instruction goes from 9 to 11:30. Lunch hour will be at the Albion Grill. In the 4 hour afternoon session there will be workshops and group skiing. At 4:30 pm begins the apres ski party with hors d'oeuvres and beverages plus prize drawings. For the Alta session you have to register prior to December 4. Call Maurine at (801) 359-2554 for info.

DEC 14 TUES

SOCIAL: CHEAP FLICKS MOVIE NIGHT Singles and everyone are welcome to meet Craig (487-2077) at 6PM at Pier 49 San Francisco Sourdough Pizza Co. for dinner (2227 Highland Dr) followed by an inexpensive movie at Movies 10 next door. Co-listed with Sierra Singles.

DEC 15 WED

CLIMBING - WASATCH FRONT CLIMBING GYM - BEGINNERS WELCOME! Join us any time after 7:00 PM for an evening of indoor climbing at 427 West 9160 South. Cost is \$8.00 per visit, or monthly memberships are available. Kids are welcomed, but they must be accompanied and supervised by an adult. Rental gear is available. Since this is a professionally monitored, controlled environment, helmets are not required. Call the gym for the best way to get around the construction. If you've never been to a gym before, WMC members will be on hand to help you out. Call Alan Lindsay (942-0641) if you have questions.

DEC 15 WED

WINTER SPORTS SHOW AND TELL For newcomers to skiing and snowshoeing, Tom and Jackie Walsh are hosting an equipment Show and Tell social. Different types of skis and

snowshoes will be demonstrated to try to clarify the mysteries of the nordic play toys. How big a snowshoe do I need? What's the difference between a track ski and a backcountry ski? What's a transceiver? If a big snowshoe is good is a bigger one even better? The hosts will answer these questions and also have other gear and clothing to show and tell newcomers what seems to work here in the Wasatch. 7:30 to 9:30 pm. Join us at 3105 Lynncrest Cove (address coordinates are 3105 W 5255 S) Call Jackie or Tom at 969-5842 for details.

DEC 18 SAT

SNOWSHOE: GREENS BASIN (NTD+) TO 9699 (MOD-) Larry Nilssen (296-1716) will try to find Greens Basin again this year, drop off those who wish to do an NTD there, (assuming orienting available for the return) and attain the peak 9699' immediately south about 1 mile but (a heart pounding) 1,200' higher. The views atop 9699 are sublime, much better than the view from, say 9544 or 9433, and the "powder float" down is among the best. Butler, at 9 AM.

DEC 18 SAT

SKI BACKCOUNTRY: WILLOW LAKE (NTD) This one is short and easy, just going 3 miles round trip with a comfortable total altitude gain of 800 feet. Rose Novak, the organizer, will meet you at 9:00 am at Butler Elementary School. Any kind of ski is OK, but the ideal would be a waxless metal edged pair. Call her at 487-6034 for details. By the way, Rose would like it if participants brought tea and extra cups to share.

DEC 18 SAT

SKI BACKCOUNTRY: CATHERINE PASS (NTD) This classic early season trip to Catherine Pass has come around again. Eric Rieux wants interested parties to call him to register and discuss equipment and requirements. Phone 461-0970.

DEC 18 SAT

SKI BACKCOUNTRY: ORGANIZER'S CHOICE (MOD) Due to the warmest Indian Summer on record (as of the Rambler publication deadline), it's a shot in the dark knowing where ski worthy snow will be located. Leslie Woods will pick a good spot, however. Her plan is to do a MOD outing requiring skins, transceiver, and shovel. Without a doubt, it will be fun. Meet at Butler Elementary at 9:00 am. (phone: 266-3317)

DEC 18 SAT

SKI TOUR: TAYLOR FORK VIA BEAVER CREEK TRAIL (NTD+) Mike Berry plans an outing of 6 to 8 round trip miles on a rolling tour which gains 1,000 feet elevation.

General touring or light backcountry skis are suitable, but call Mike to discuss equipment if you have any doubts. Meet at the K Mart parking lot on Parley's Way at 8:30 am. If you live outside the valley, call to arrange alternate meeting times. Remember \$6-\$8 per carpooler plus \$3 per car Mirror Lake Highway fee.

DEC 19 SUN

SKI TOUR: UPPER SETTING ROAD (MOD-) This gradually climbing tour in the Uintas area offers striking views and the opportunity to assess 2 new yurt locations on its way towards Castle Lake. Steve Pritchett (523-9243) will show it to you. Sturdy touring skis or light metal edged skis will work. Skins may be useful. If you pull out those avalanche beacons we'll have an early season practice session. Bring \$3.00 per car for the Forest Service toll booth. Location open to change depending on conditions.

DEC 19 SUN

SNOWSHOE: ORGANIZER'S CHOICE (MOD) Leslie Woods (266-3317) understands that she wants to get out and go this weekend, but is not yet sure where. Be assured the outing will be physical, phast and phunn. Butler Elementary at 9AM. Leslie encourages you to bring/wear pieps.

DEC 19 SUN

SKI BACKCOUNTRY: BEYOND THE DOG (NTD+) Pete Mimmack has a clever plan. Do the easy ski to Dog Lake, then go beyond and westward to the gentle slopes on the foot of Reynolds Peak. This is a nice but longer tour, plus it will reward those wanting to do a few turns with some smooth low angle slopes. Bring metal edges skis, skins. Meet at Butler Elementary School at 2700 East and 7000 South at the hour of 9:00 am. Call Pete at (801) 377-2330.

DEC 19 SUN

SKI BACKCOUNTRY: ORGANIZER'S CHOICE (MOD/MSD) To solve the skier's problem of thin snow coverage early in the winter, Brad Yates will fall back to the well proven method of outguessing Old Man Winter. Meet Brad at Butler Elementary School at 0900 hours. Mandatory equipment includes rescue shovel, radio beacon, skins, and the 10 E's. (521-4185)

DEC 19 SUN

SKI BACKCOUNTRY: LITTLE COTTONWOOD CANYON AREA (MSD) If Edgar does it, it will be hard, but good. The exact destination is currently undefined, but it will be on the Little Cottonwood Canyon perimeter. At the higher altitude snow is likely to be skiable. Bring the 10 E's, radio transceiver, shovel, and skins (or else you can't get there). Meet at Butler Elementary School at 8:00 am (note the earlier than usual meeting time). Phone Edgar at 486-7829

DEC 22 WED

CLIMBING - WASATCH FRONT CLIMBING GYM - Join

us any time after 7:00 PM for an evening of indoor climbing at 427 West 9160 South. Cost is \$8.00 per visit, or monthly memberships are available. Kids are welcomed, but they must be accompanied and supervised by an adult. Rental gear is available. Since this is a professionally monitored, controlled environment, helmets are not required. Call the gym for the best way to get around the construction. This week there may or may not be a WMC host. You may be on your own but it still beats sitting around watching TV. Call Alan Lindsay (942-0641) if you have questions.

DEC 23 THUR

SKI TOUR MOUNTAIN DELL (NTD) Eric Rieux invites people interested in learning, or just working out, to join him at Mountain Dell or possibly Millcreek Canyon at 3:30 pm to dark. Eric offers training tips using the Classic style kick and glide ski touring. Call to register and discuss plans at 461-0970.

DEC 25 SAT

CHRISTMASSNOWSHOE: ALTA AREA (NTD) Ray Duda (272-4601) and Loraine Lovell have enjoyed organizing this Christmas leisurely tour for several years now. So if the idea of sunlight, fresh air and refreshing snow is appealing,, if you would like to stretch and take a break from holidaying, this is your chance. Butler Elementary at the holiday hour of 9:30 AM.

DEC 25 SAT

SKI BACKCOUNTRY: GRIZZLEY GULCH (MOD) Who has the chutzpah to organize a ski trip on Xmas? None other than Terry Rollins. This Y2K compliant trip begins at 10:00 am at Butler Elementary School at 2700 East and 7000 South. Bring your usual backcountry gear (transceiver, shovel, and skins.) Also bring Christmas cookies, mistletoe, and jingle bells. (274-7935)

DEC 26 SUN

SNOWSHOE: CATHERINES PASS FROM BRIGHTON (NTD) For your post holiday R & R, Zig Sondelski (292-8332) has agreed to organize this NTD tour to one of our more rewarding (view) destinations. So, dispose of the gift wrap, store your (reusable, naturally) tree and get out of the cabin. Butler at 9AM.

DEC 26 SUN

SKI TOUR: SHOW 'N GO Due to the holiday weekend, we are posting this Uintas Show 'N Go notice. Do you have new double-cambered boards to check out? How about Beaver Creek Trail?, North Fork of the Provo?, Yellow Pine Trail to Yellow Pine Lakes? Show up at the K Mart parking lot on Parley's Way at 8:30 am. Bring \$3.00 per car for the Forest Service toll booth, and one release form for the

group.

DEC 26 SUN

SNOWSHOE: WHITE PINE (MOD) The Executive Search Committee, Snowshoe Group, successfully recruited Tom Walsh (969-5842) VP, WMC, to organize this tasty plumb, for those who seek a bit more physicality in their post holidaying. Butler Elementary, 9AM.

DEC 26 SUN

SKI BACKCOUNTRY: MT SUPERIOR (SKI-MTN) This will be high yodeling adventure. Email Walt Haas to register for a Ski Mountaineering trip to one of the most dramatic peaks in the Wasatch. (haas@xmission.com) or (phone 534-1262)

DEC 26 SUN

SKI TOUR OR SNOWSHOE: NORTH FORK OF THE PROVO (NTD) Winter sports organizer Vickie Ashby (264-3187) will be back at that popular trailhead up the Mirror Lake Highway. Join her with your chosen mode of conveyance for a post-holiday trek into the snowy Uinta backcountry. No avalanche beacons needed. Convene at the K Mart parking lot on Parley's Way at 8:30 am. Bring \$3.00 per car for USFS parking.

DEC 26 SUN

SKI BACKCOUNTRY: THE HILLS (MOD) Chris Procter plans a moderate but far ranging outing to the hills of Mill D North Fork. In other words, Toms Hill, Bills Hill, Wallys Hill, Dales Hill – it will depend on snow conditions and participant's energy. Meet at Butler Elementary School at 9:00 am. You must have radio beacon, rescue shovel, and skins. Call Chris at 466-1905 for info.

DEC 29 WED

CLIMBING - WASATCH FRONT CLIMBING GYM - BEGINNERS WELCOME! Join us any time after 7:00 PM for an evening of indoor climbing at 427 West 9160 South. Cost is \$8.00 per visit, or monthly memberships are available. Kids are welcomed, but they must be accompanied and supervised by an adult. Rental gear is available. Since this is a professionally monitored, controlled environment, helmets are not required. Call the gym for the best way to get around the construction. If you've never been to a gym before, WMC members will be on hand to help you out. Call Alan Lindsay (942-0641) if you have questions.

DEC 30 THUR

SKI TOUR MOUNTAIN DELL (NTD) Eric Rieux invites people interested in learning, or just working out, to join him at Mountain Dell or possibly Millcreek Canyon at 3:30 pm to dark. Eric offers training tips using the Classic style kick and glide ski touring. Call to register and discuss plans at 461-0970.

JAN 1 SAT

SNOWSHOE: CHAMPAIGN ON MT MILLICENT: Y2K (MOD-) What a great way to toast the new Millennium! (Or celebrate the end of civilization, as we know it, if the Y2K bug eats everything) Larry Nilssen (296-1716) plans to run up to Twin Lakes dam, and summit Mt Millicent, to the magnificent view thereup. Bring a flute to fill with your favorite bubbly. If you have a drinking problem, bring a trombone! Bring Beethoven (on a headset, naturally) This is not an easy ascent. Butler at 10AM.

JAN 2 SUN

SNOWSHOE: BROADS FORK (NTD+) Holly Smith (272-5358) organizes this day-after-the-end-of-civilization trip. If civilization has ended, please call first. (How? - I haven't the foggiest) Otherwise, be prepared for an enjoyable scenic tour with Holly, great company. Butler Elementary at 9AM.

JAN 2 SUN

SKI BACKCOUNTRY: WILLOWS AREA (MOD) Organizer Steve Townsend is not going to be caught utilizing inefficient single passenger vehicle use in the new Millennium. Park at Lot 4 just west of Wasatch Blvd and Fort Union Blvd. Then meet at the Big Cottonwood Park and Ride bus stop no later than 8:30 am Note that you must be ready to go not later than 8:30 am, because the UTA bus will not wait for you to put mole skin on your heels. Have your transceiver, shovel and skins ready for a day of backcountry skiing around the Willows area. (463-9465)

JAN 2 SUN

AUDREY KELLY LEARN TO SKI CLINIC (EL-NTD) Got two left feet? Been falling down too much? Does that white slippery stuff intimidate you? The cure for these problems might be joining the Audrey Kelly Clinic to acquire some skills and to raise your comfort level with cross country skiing. The basic plan is to have an experienced skier coach 2 or 3 students for some personal training and encouragement. We will practice at the Spruces area in Big Cottonwood Canyon. Volunteers are needed to help teach. Students should call no later than December 27 to plan transportation, and rental of equipment (if necessary). Phone Mike Berry at 583-4721 or Tom Walsh at 969-5842.

JAN 2 SUN

SKI BACKCOUNTRY: ORGANIZERS CHOICE (MSD) The free ranging Allen Gavere knows the ski slopes like the back of his hand. His choice of slope today will be one that is adventurous and rewarding. Meet at Butler Elementary School at 0900 hours. Bring your skins,

transceiver, and shovel, food, water, and 10E gear. Call Allen at 486-1476 to check conditions and register.

JAN 4 TUES

SNOWSHOE: PARK CITY ENVIRONS (MOD) Vince DeSimone has run this Tuesday snowshoe formally and informally for some time now. He gets a nice group, and they go to nice places. But be forewarned - they also go to a nice, healthy pace. Contact Vince in cyberspace (preferred) at vincedesimone@yahoo.com; if unwired at (1-435-649-6805) to find out the day's destination and meeting place.

JAN 5 WED

CLIMBING - WASATCH FRONT CLIMBING GYM - Join us any time after 7:00 PM for an evening of indoor climbing at 427 West 9160 South. Cost is \$8.00 per visit, or monthly memberships are available. Kids are welcomed, but they must be accompanied and supervised by an adult. Rental gear is available. Since this is a professionally monitored, controlled environment, helmets are not required. Call the gym for the best way to get around the construction. This week there may or may not be a WMC host. You may be on your own but it still beats sitting around watching TV. Call Alan Lindsay (942-0641) if you have questions.

JAN 6 THUR

SKI TOUR MOUNTAIN DELL (NTD) Eric Rieux invites people interested in learning, or just working out, to join him at Mountain Dell or possibly Millcreek Canyon at 3:30 pm to dark. Eric offers training tips using the Classic style kick and glide ski touring. Call to register and discuss plans at 461-0970.

JAN 8 SAT

SNOWSHOE: POWDER PARK (MOD) Cassie Badowski is back! We greatly missed Cassie, and welcome her back to a tour organizing role - it is just great that her first outing will be to (one of) her favorite haunts - Powder Park. For new members, Powder Park is not on the map as such, but is a showshoe friendly (great views, pine and aspen) area north-west of Desolation Lake. All is right with the world. Butler Elementary, 9AM.

JAN 8 SAT

SKI BACKCOUNTRY: GREENS BASIN (NTD) Here is one that won't kill you; er, I mean; here is an outing that won't utterly exhaust you. Greens Basin is about 4 miles round trip with about 1000 feet of elevation gain. Martin McGregor will preside. Meet at Butler Elementary School (2700 E 7000 S) at 9:00 am. Metal edged skis are advisable. (967-9860)

JAN 8 SAT

SKI BACKCOUNTRY: TOMS HILL (MOD) Everybodys favorite - both the slope and the organizer. Meet Jane Webster at Butler Elementary School at 9:00 am. For this most excellent

backcountry tele-party bring your shovel, 10 E's, transceiver, and skins. Questions? Call Jane at 583-0703.

JAN 8 SAT**SKI TOUR: NORTH FORK OF THE PROVO (NTD)**

This kick and glide tour provides access to miles of touring in the upper Provo, however, Martin Clemans (968-1252) will turn around near the old yurt location (3 mi.). Martin approves the use of sturdy touring or light metal edged skis. No avalanche beacons needed. Meet at the K Mart parking lot on Parley's Way at 8:30 am. Bring \$3.00 per car for the Forest Service toll booth.

JAN 9 SUN

SKI TOUR: SHINGLE CREEK (NTD) Jerry Hatch leads this classic tour in the Uintas. Sturdy touring skis are needed, and climbing skins are suggested. Bring your thermals and adequate liquids to really enjoy this one in comfort. Meet at the K Mart parking lot on Parley's Way by 8:45 am. If you live outside the valley, call to arrange alternate meeting times. Remember the \$3.00 per car Forest Service fee.

JAN 9 SUN

SNOWSHOE: S WILLOW LAKE (MOD+) Kathy Hunn hosts this legendary, tho often cancelled, classic again. 4 mi each way, 2500' elevation change from the ranger station to the lake. Meet at Home Depot (328W 2100S), SW area of the parking lot at 9AM sharp to carpool - 4wd vehicles necessary to attain the trailhead. Meet Cathy at the (unmissable) Maverick Station, at Stansbury Park, @9:30 - take I80 to exit 99. Call 1- 435-882-6529. beforehand, as ice may prevent reaching the trailhead, or the snow may be problematic.

JAN 9 SUN

SNOWSHOE: DOG LAKE (NTD) Our angel of mercy, Patty O'Keefe (973-7984) extends a kinder, gentler alternative to refugees from the Willow Lake "Death March," - a leisurely tour to "Dog Lake." Having secured the location of "Dog Lake" last year, (or at least having delegated that task to the alternate organizer, when she became temporarily unavailable) Patty is eager to return! For the first time. Butler Elementary, 9AM.

JAN 9 SUN

SKI BACKCOUNTRY: SILVER FORK VARIATION (NTD+) Craig Anderson has a variation on the normal. His version of Silver Fork is to go up the west side, to the lower mine, sip tea and munch treats, then go down the east side through the woods and clearings. This will be a NTD with respect to length but will require ability to turn and negotiate a route in trees. Craig recommends metal edges

skis and skins. Call Craig for details. 487-2077) Meet at Butler Elementary at the afternoon time of 1:30 pm.

JAN 9 SUN**SKI BACKCOUNTRY: MILL D TO MILL CREEK (MOD)**

This might revert to an Organizers Choice, but Kyle's current plan is to ski up Mill D North Fork, go over Little Water (maybe Big Water) and thence ski to Mill Creek Canyon. With luck and good snow fallage, Kyle will do Soldier Fork. Mandatory gear includes the 10E's, skins, shovel, and transceiver. (Call 886-0159 to register)

JAN 9 SUN**SKI BACKCOUNTRY: PFEIFFERHORN (SKI-MTN)**

Pfeifferhorn is a different world in the winter - stark, steep, and exciting. You need skills to even think about this Ski Mountaineering trip of 10 round trip miles and 3700 feet of elevation gain. Email Walt Haas at haas@xmission.com for details, equipment, time, meeting place, etc. By phone Walt can be reached at 534-1262.

JAN 11 TUES

SNOWSHOE: PARK CITY ENVIRONS (MOD) Vince DeSimone has run this Tuesday snowshoe formally and informally for some time now. He gets a nice group, and they go to nice places. But be forewarned - they also go at a nice, healthy pace. Contact Vince in cyberspace (preferred) at vincedesimone@yahoo.com; if unwired at (1-435-649-6805) to find out the day's destination and meeting place.

JAN 12 WED

CLIMBING - WASATCH FRONT CLIMBING GYM - BEGINNERS WELCOME! Join us any time after 7:00 PM for an evening of indoor climbing at 427 West 9160 South. Cost is \$8.00 per visit, or monthly memberships are available. Kids are welcomed, but they must be accompanied and supervised by an adult. Rental gear is available. Since this is a professionally monitored, controlled environment, helmets are not required. Call the gym for the best way to get around the construction. If you've never been to a gym before, WMC members will be on hand to help you out. Call Kristen Keefe (484-8729) if you have questions.

JAN 13 THUR

SKI TOUR MOUNTAIN DELL (NTD) Eric Rieux invites people interested in learning, or just working out, to join him at Mountain Dell or possibly Millcreek Canyon at 3:30 pm to dark. Eric offers training tips using the Classic style kick and glide ski touring. Call to register and discuss plans at 461-0970.

JAN 13 TO 17 THURS THU-MON

SKI BACKCOUNTRY COMMISSARY RIDGE YURT. (Advanced back country skiing) Sorry, the trip is filled up. You

have to move fast and get your deposit in early. If you snooz, you loose!

JAN 14 FRI**CLIMBING - ADVANCED SKILLS CLASS/PARTY #4**

When bad things happen to good climbers. This is the fourth of a monthly series of parties/classes we're holding through the winter, working on various advanced skills they don't teach in the gym. This month we will explore a few more techniques out of Chockstone's "Self-Rescue" book.

Bring your harness, belay device, slings, cordelette, food, drinks, etc. Location to be announced. Any volunteers?

JAN 15 SAT**SNOWSHOE: NORTH OGDEN PASS CLIMBOUT: LEFT CHILLY PEAK OR RIGHT: LEWIS PEAK (MOD +)**

Sick and tired of being warm, dry, and comfortable? This is it: the event no one in their right mind is waiting for (and very few show up for)! The fourth annual North Ogden Pass climbout: straight up the canyon side, and ridge run towards Chilly Peak or Lewis Peak, whichever has best snow. Great views. High Wind. 3 Moose. (last year) Cold. Brrrrrr. Larry Nilssen (296-1716) meet at NW corner, Super Target parking lot, I-15 exit 322 at 9AM.

JAN 15 SAT**SKI BACKCOUNTRY: BEARTRAP FORK (MOD)**

Seven round trip miles and 2400 feet of elevation gain is the price you pay to ski Beartrap. However Beartrap pays you with great slopes, and good runs. Larry Stewart, the organizer, requires skins, beacons, shovels, plus the usual food, water, and 10E's. Meet at Butler Elementary school at 9:00 am. (944-0213)

JAN 15 SAT**SKI TOUR: NORTH FORK OF THE PROVO (NTD)**

This tour is so good Howard Barlow (328-4701) will follow Martin's tracks from one week ago and diagonal stride for about 3 miles in. Will new snow have fallen, requiring trail breaking? Come and help out today! Howard approves the use of sturdy touring or light metal edged skis. No avalanche beacons needed. Meet at the K Mart parking lot on Parley's Way at 9:00 am. Bring carpool money (6- \$8 per person) and Mirror Lake Highway parking change (\$3 per car).

JAN 16 SUN**SKI TOUR: GREENS BASIN (NTD) Bee Lufkin and**

Peter Hanson are organizing this scenic 4 mile round trip (583-8249) up the switchbacks into "the Basin". Meet them at Butler Elementary School at 9:30am. The leaders prefer you bring skins, but going with 'fishscales' is ok if you are a proficient skier.

JAN 19 WED

CLIMBING - WASATCH FRONT CLIMBING GYM - Join us any time after 7:00 PM for an evening of indoor climbing at 427 West 9160 South. Cost is \$8.00 per visit, or monthly memberships are available. Kids are welcomed, but they must be accompanied and supervised by an adult. Rental gear is available. Since this is a professionally monitored, controlled environment, helmets are not required. Call the gym for the best way to get around the construction. This week there may or may not be a WMC host. You may be on your own but it still beats sitting around watching TV. Call Alan Lindsay (942-0641) if you have questions.

JAN 22 SAT**SOCIAL: ANNUAL AWARDS BANQUET & BALL**

DOUBLETREE HOTEL 6PM Welcome to the Club's first social event of the new millennium! In the heart of SLC find your way to the Doubletree Hotel Ballroom (255 S. West Temple FREE parking!). Recognition Awards ('99 outstanding contributions by WMC members) along with Board Nominations (2000/2001). Make this a special evening with semi-formal attire and dance to the exciting music of TONY SUMMERHAYS (a whirl of energy who provides both music for dancing and entertainment...guitar, trumpet, keyboard [full band sound]!). Cost: \$24/person paid in advance to Carol Ann Langford by January 16th made payable to WMC. See Reservation information in front of this Rambler issue. Be sure to attend this millennium gala event!! Questions: Carol Ann Langford (255-4713) or Martin Clemans (968-1252).

JAN 26 WED**CLIMBING - WASATCH FRONT CLIMBING GYM - BEGINNERS WELCOME!**

Join us any time after 7:00 PM for an evening of indoor climbing at 427 West 9160 South. Cost is \$8.00 per visit, or monthly memberships are available. Kids are welcomed, but they must be accompanied and supervised by an adult. Rental gear is available. Since this is a professionally monitored, controlled environment, helmets are not required. Call the gym for the best way to get around the construction. If you've never been to a gym before, WMC members will be on hand to help you out. Call Kristen Keefe (484-8729) if you have questions.

COMING ATTRACTIONS:

JAN 13-17 THURS - MON

COMMISSARY RIDGE YURT. (Advanced back country skiing). We will spend the long weekend at Commissary Ridge Yurt on the west side of the Tetons. The attraction is long expert runs on nearby Beard Mountain, where it is possible to ski thousands of vertical feet without stopping. Drive up Thursday evening, spend Thursday night in a motel, ski in Friday morning and spend three nights at the yurt, then return on Monday. Reserve your place by mailing a non-refundable deposit of \$75 to organizer Walt Haas, 717 Ninth Avenue, Salt Lake City UT 84103. The first check to arrive gets the place on the trip. Payments arriving after the trip is full will be returned. If you have questions ask Walt at (801) 534-1262 or haas@xmission.com.

FEB 24-27 THUR-SUN

SKI BACKCOUNTRY COMMISSARY RIDGE YURT (Advanced back country skiing). We will spend the long weekend at Commissary Ridge Yurt on the west side of the Tetons. The attraction is long expert runs on nearby Beard Mountain, where it is possible to ski thousands of vertical feet without stopping. Drive up Thursday evening, spend Thursday night in a motel, ski in Friday morning and spend three nights in the yurt, then return Monday. Reserve your place by mailing a nonrefundable deposit of \$75.00 to organizer Walt Haas, 717 Ninth Avenue, Salt Lake City UT 84103. The first check to arrive gets the place on the trip. Payments arriving after the trip is full will be returned. If you have questions ask Walt at 801-534-1262 or haas@xmission.com.

DECEMBER-MARCH VARIOUS YURT TRIPS

The dates are not quite set in concrete, but the schedule of yurt trips for skiing and snowshoeing looks somewhat like this:

Dec18-20, Baldy Knoll, by Victor, Idaho
Jan 7-9, Steam Mill, by Logan, Utah
Jan 13-17, Commissary Ridge, by Victor, Idaho
Jan 21-23, Lilly Lake, Uinta Mountains
Feb 4-6, Bunchgrass, by Logan, Utah
Feb 18-20, Castle Peak, by Kamas, Utah
Feb 24-27, Commissary Ridge, by Victor, Idaho
Mar 10-12, Lilly Lake, Uinta Mountains.

CLIMBING: KILIMANJARO

JANUARY 14 TO 22, 2000

Custom Machame Route, the most scenic route. Total package with air from SLC (priced on availability) \$3,290.00. 4 day Safari extension (includes park fee) \$1,395 for 6 or more. If interested and more info, please call Christel Sysak at 277-9988 or 943-0316.

MAY 2000

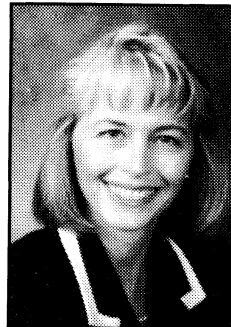
SAILING/DIVING/LAND EXPLORATION BELIZE

Persons considering this trip should contact vincedesimone@yahoo.com or phone 435-6449-6805 to express interest. This is NOT A SIGN-UP.

MAR 23 - 26, 2001

HIKE: GRAND CANYON PHANTOM RANCH (MSD)

The list and a wait list are full. A planning meeting will be scheduled about a year from now. If anyone else would like to make reservations and organize a trip, you are welcome to call me for details. Contact Zig Sondelski at 292-8332.



Leslie Schimmel

REALTOR®
Mobile/VM: (801) 856-7679
Fax: (801) 265-0704
Office: (801) 266-4663

Wardley
corporation
Better
Homes
and Gardens®



4516 South 700 East • Suite 360
Salt Lake City, Utah 84107

Classy Ads:

Notice: *The Rambler* cannot accept any ad that is inconsistent with the purposes of the WMC or offends the sensibilities of Club members. Send your ad with enclosed payment if required, to Wasatch Mtn. Club, Attn: Classy Ads, 1390 S. 1100 E., #103, SLC, UT 84105. Please submit by the 12th of the month to ensure your ads inclusion.. Advertising rates are \$5.00 for up to 20 words and 20¢ for each additional word. WMC members may place **free** ads for used recreational gear or for private non-commercial and not-for-profit activities. *WMC members may email submittal to wmc@xmission.com, subject line: Classy Ads.*

WANTED: ANY PHOTOS, GRAPHICS, or other ideas suitable for the cover page of future rambles. Please put any submissions in the blue box outside the office door complete with captions or appropriate explanations before the 15th of each month. Send in your seasonally appropriate photos to the WMC.

CD Case Mate Lost and Maybe Found

We had a great hike and afterwards I lent my CD Case Mate to you. We have not connected on another hike since then so please call or write me so we can arrange for their return. Happy hiking

Joseph M. Radford

4076 South 1400 East

Salt Lake City, UT 84124-1445

Home Phone: 801-272-7507

Work Phone: 801-582-1565 x 5109

FAX: 801-584-1278

Lutheran Social Service of Utah invites RN, LPH, Certified Nurse Assistants and Certified Home Health Aides, with part-time or full-time availability, to call our office and be placed on our Senior Assistance listing for elderly and their families, friends and neighbors use, at no cost. Please call: 801-588-0139 or 877-388-LSSU, Leslie, for more information. 12/2000

For Sale: Downhill Ski Equipment

Men's Rossignol Ski Boots - new R725 size 9 ½ Blue \$100

Novara Canvas Bicycle Travel Bag. (For planes, etc.) \$125.

Salomon Binding 757 on Olius Pro Cx 180 - free (older skis)

Call Sandy 801-355-9414

For Sale: Backcountry Ski Equipment:

Skis - Karhu Catamount 190 cm, waxless base

Bindings - Rottefella BC (NNN style) with Rainey Super Loop cables and climbing bails

Boots - Alpina BC 2500 (Leather with plastic cuff) size 10

Great Starter set! One season old. Maybe used 10 times.

LIKE NEW! Paid \$600.00. Sell for \$350.00 obo. Call Jim 572-5650.

Dinner With Friend's

A Social Setting To Meet People

What is It?

Four Women and four men meet at local restaurant for dinner*. No hassle, no pressure, just introductions, dinner, and conversation in a non-threatening environment.

How it Works.

If you are interested in somebody, the next day ask the host to inquire about going out with that person. If the person is interested, great, if not, no pressure, no embarrassment.

The First Invitation Is Free

For Information Call

(435)901-1540

<http://www.cenec.com>

look under clients for home page

*Remember, you pay for what you eat and drink. The membership is only for the invitation.

DIRECTOR'S MESSAGES

From the Winter Sports Director Tom Walsh

Who was Robert Frohboese and why does he have an Avalanche Clinic?

This is an excerpt from a Memorial in the April 1981 *Rambler* by Joel Bown.

On Sunday, March 1, 1981, Bob Frohboese died in an avalanche while ski touring with friends in Porter Fork. As always, he went first to test ski the slope and get first tracks. My last contact with him was his "yahoo"

upon finding powder in fairly dense trees he was skiing through. How can I describe the loss I and his many friends feel?

Bob was a witty, vital, dynamic human being. He threw himself into whatever he did. Skiing brought Bob to Utah, and he excelled at it. He taught skiing several years, and for a while directed his own ski school at Wolf Creek Pass, Colorado. For the past three years Bob worked for Systematics, Inc, a computer service company

specializing in banking, and had been the manager of their Salt Lake City site since fall.

Outdoor sports were Bob's life. He loved rock climbing and mountaineering. He made many trips to Canada, the Wind Rivers, and the Northwest. No one who knew him will ever forget Bob – he was always such a dominant force.

(--end of excerpt--)

After his death a memorial fund was established to enhance medical assistance capabilities in backcountry rescues. WMC sponsors the Robert Frohboese Avalanche Clinic each year to improve the avalanche skills of Club members. If you go out in snow to snowshoe or ski, you owe it to yourself to learn about avalanche hazards. What you learn can save the lives of your friends. Better yet, you might learn something that could save YOUR life.

Look in the Activity listings on December 8 and 11 for details on the Frohboese Avalanche Clinic.

TRIP TALKS

Flat Tire Friday

or

I Never Get the Big One at Night

November 5, 1999

By Bob Maxwell

This Indian Summer has been the greatest ever for those wishing to get some extra mountain biking in before the winter snows arrive, so much so that there have been extra Alpha to Zeta Friday bike rides that haven't been scheduled in *The Rambler*. This was one of those rides.

Our starting point was Utah Lake State Park, then

along the Provo River Parkway to two miles above Bridal Veil Falls in Provo Canyon. This 33 miles out and back trail could truly be called a kinder and gentler ride. It included pavement, gravel and hard packed dirt that wound through the heart of downtown Provo and many city and community parks in between. Fueled by the warmth of the day and sunshine above, this leisurely ride was only interrupted by a frequency of flat tires that may have set a record for a mountain bike ride. Our final tally at the end of the day was 10 flats.

For half of the bikers the day was not over yet. It

was time for dinner of pasta and pizza at the "Brick Oven" on the BYU Campus. This excellent meal was needed to refuel our spirits for an evening of soaking in the warmth of the hot springs up Diamond Fork Canyon.

Traveling up Spanish Fork Canyon, we took the turnoff to Diamond Fork Canyon where we traveled approximately 7.5 miles to our destination. Starting at the trail head, we hiked 2.5 miles under a star filled night where the sulfur filled air announced we had reached the hot springs. Soaking in the warm water, breathing the cool mountain air, and listening to the music of a native American flute along with great conversation was a fitting way to relax our tired muscles and cap a day of exercise and friendly companionship.

Participants of Flat Tire Friday: Debi Bouchard, Jennifer Heineman, Tim McDonald, Larry Ovaatt, Bob Maxwell, Sigi Verhalen, Russell Sapford, Gloria Leonard, Hardy Sherwood and Carlos Tavares.

Escalante Family Car Camp by Herb Hayashi

In early October, a group of nine adults and three children spent a wonderfully sunny weekend hiking the canyons of Escalante. To be sure, there was a flat tire, a scorpion under a pack, a snake in the narrows and scatological jokes by third graders around a campfire, but the group survived with good spirits largely intact.

On Saturday, we explored Peek-a-Boo, Spooky, and Brimstone canyons. The first two canyons were very narrow and claustrophobic -- hiking with a pack in these slots was out of the question. One had to shuffle crab-like with packs in tow. In Spooky Canyon, passing the snake without stepping on it was proving difficult, so it had to be captured and released out of the narrows. In the

dark and eerie Brimstone Canyon, we were stopped by chilly water about quarter mile in, but by then most of us had enough fun for one day. The evening at camp was festive with a heavily-laden happy hour table, roaring campfire, marshmallows, and funny stories to keep the chilly night air at bay. We were serenaded during both evenings by a pack of coyotes.

On Sunday, we walked up the interpretive nature trail to the Lower Calf Creek Fall. Although the air temperature was almost hot during the hike, the misty pool at the base of the fall was quite cool, and most of us admired the site from the shore. Only Curtis Turner and Steve Clawson showed their machismo by swimming to the fall.

Many thanks to Curtis and Steve for helping find a campsite and for helping the participants up the initial scramble into Peek-a-Boo Canyon. Thanks, also to the Maleckis for sharing their water with the thirsty hikers, and to Kristen Keefe for tireless reading of chapters from 'Harry Potter'.
Participants: Debora Davis and her sons, Sean and Ian, Carol Anderson, Victoria Saldana, Curtis Turner, Steve Clawson, Ray and Julie Malecki, Kristen Keefe, Stuart and Herb Hayashi.

Mill D to Bear Trap loop hike. Sunday, September 12. By Eric Rieux

Ever wondered how to enhance your hiking experience? Bring along in your pack 25 to 35 lbs. of live, wiggling, sleepy, smelly and overall loving human flesh (aka "a baby"). This was a trip where "backpackable" babies and toddlers were welcome if not required. Three of them showed up with their parents (aka "the porters").

We hiked up Mill D fork to Desolation Lake. Some baby swapping went on as the grade got steeper and the porters got tired. Hiking with

babies will not only enhance your spiritual experience with Mother Nature, it will also make you stronger as you get used to carrying not 10 but about 35 "Essentials." Lunch was enjoyed by Desolation Lake, where a couple of "duckies" visited with us for a while. The only bachelor of the party (Dale) was a good sport, and adopted babies by becoming an "Uncle" for the day. Smartly, he took his distance when it was time to change diapers (one of the 35 E's).

We kept going up, and reached the ridge between Mill Creek and Big Cottonwood Canyon for beautiful vistas of the Wasatch and distant Uintas. We then plunged down Bear Fork and did some bushwhacking, as this trail seems to get very little usage.

A good time was had by all with plans to do more of these trips in all seasons.

Participants were, porters: Gerri and Brian Barkey, carrying Matthew; Susan Narcomey, carrying Jennifer; Karen and Eric Rieux, carrying Sonia; and Dale "Uncle" Woodward, carrying self.

Hurst Bridge

October 23-24

By Jean Parry

Oh what a trip! Yes! Barbara you really out-did yourself this time with the last campout at the Swell. That spectacular harvest moon, the perfect weather, wonderful food, the choicest of companions and several of the Swells' hidden treasures!

Day one, we hiked up a lovely redrock hill (NTD), went over the top, down and around and into a slot, then around the bend and and suddenly, there it was! This impressive bridge named Hurst, tucked away in a little hole surrounded by rock. One could miss it if not alert to the landmarks.

We ate our lunch there while lounging in the cool

shade of the rocks. Hurst Bridge is 22 feet high, 55 feet wide, with its span being 70 by 16 by 5 feet.

After returning to camp, Barbara fixed a wonderful Dutch oven dinner for us, complete with wine, music and the loveliest landscape of gently rounded redrock illuminated by the soft glow of that big, full moon. Unforgettable!

Day two, we hiked up a long winding wash, the north fork of Iron Wash to be exact, where we lunched in a small grove of sun-dappled, shimmering golden Cottonwoods. Then, as we hiked up the wash, the cliffs became increasingly higher and closer until we found ourselves in a winding, deep slot canyon. Eventually this adventure ended quite abruptly with a dark and deep tank, redrock walls thrusting straight up and streaked with typical black patina of the ages. It was an awesome sight. Apparently, some rappellers had been there before. What happened to them one can only guess.

Participants included our brave and fearless leader Barbara Green, Carol Ann Langford, Dudley McIlhenny, Floyd Meads, and myself, Jean Parry. Thank you Barbara!

Maple Canyon Car Camp

October 1-2

By Randy Long

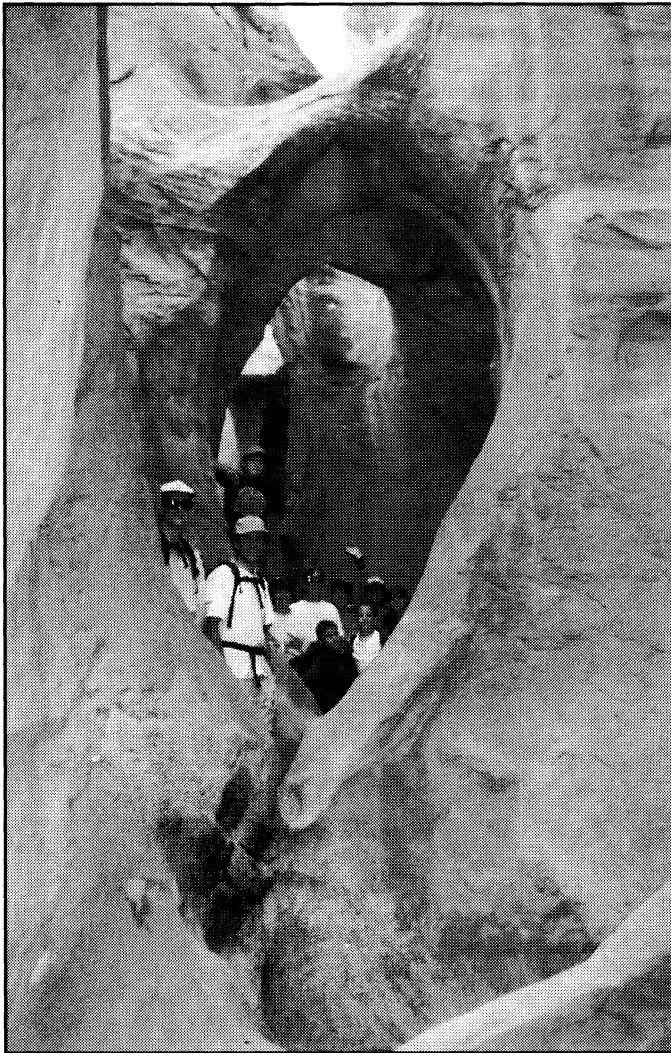
This nice little canyon, which is full of spectacular Southern Utah scenery, is located just west of the small town of Moroni in Sanpete County at the very southern end of our own Wasatch Range. Looking at a road map, you would notice one more forested area south of Mt. Nebo—this is that area.

The Utah Environmental Congress asked me to inventory this area for possible wilderness area

designation, which it needs, as there's at least one large arch. The group also found several small arches, an amphitheater, and one really good narrows (which has the cute name of Box Canyon). There were also dozens of echoes, a balanced rock, and, of course, plenty of big toothed maple trees. The area will obviously need to be cherry-stemmed for the main road in, as well as the four-wheel drive road that goes north from the campground.

The only problem we had was losing the trail right at the beginning, as the map sign didn't mark it, and we all really enjoyed the trail and the car camp experience.

Participants: Andrew Beard, Barbara Green, Jean Parry, Alex Ranney, and myself, Randy Long, organizer.



Escalante Family Car Camp, Peek-a-Boo Canyon,
L-R: Curtis Turner, Steve Clawson, Stuart Hayashi,
Kristen Keefe, Carol Anderson, Julie Malecki,
Victoria Saldana, Debora Davis, Sean and Ian
Oliveira. Photo by Herb Hayashi.



Jackie & Tom Walsh - "Aliens"
Halloween Party
Most Innovative Twosome

ACTIVITY SURVEY

WOULD YOU LIKE TO LEAD?

All of the Club's activity leaders are volunteers. You can be a leader too—just check off the activities you want to lead, and we'll give you a call. Help your Club and have fun too!

- Hiking:** ☐ easy day hike ☐ moderate day hike ☐ advanced day hike ☐ car camp
 ☐ backback
- Boating:** ☐ trip leader ☐ instruction ☐ equipment ☐ sailing
- Skiing:** ☐ NTD tour ☐ MOD tour ☐ MSD tour ☐ out of town trip
- Climbing:** ☐ Wasatch climb ☐ out of town trip ☐ winter mountaineering
- Bicycling:** ☐ road bike tour ☐ mountain bike tour ☐ camping tour
- Other outings:** ☐ snowshoe tour ☐ caving ☐ other

WOULD YOU LIKE TO SUPPORT?

The Club also depends on volunteers for all the rest of its work. Some of this work is critical to the day-to-day functioning of the Club; some of it is important to our community; some of it is just fun. You can let us know how you'll help by checking off activities below.

- Conservation:** ☐ air and water quality issues ☐ trailhead access ☐ wilderness
 ☐ telephone tree ☐ trail clearing
- Socials:** ☐ social host ☐ Party assistance ☐ lodge host
- Rambler:** ☐ word processing ☐ mailing ☐ advertising ☐ computer support
- Lodge:** ☐ general lodge repair ☐ skilled lodge work
- Information:** ☐ public relations ☐ membership help ☐ recruiting ☐ instruction

Would you like to participate on an activities committee? Which one?

Is there a special trip or activity you would like to lead?

What phone numbers can we use to reach you?

Wasatch Mountain Club

New Member/Reinstatement of Previous Members Application

Do Not Use this Form for Regular Annual Membership Renewal

Please read carefully and fill out completely.

Name(s) _____
(First) (Last)

Address _____ City _____ State _____ Zip _____

Check phone number ☐ Residence: _____ Other ☐ Do not print my name/phone in membership list.
 to print in **Rambler** ☐ Work: _____ Options: ☐ Do not list my name in lists given to Board
 membership list: ☐ e-mail: _____ approved conservation/wilderness organizations.

I am applying for:

Check one:

_____ New Membership ☐ Single Birth date(s) _____
(Please complete activity section.)
 _____ Reinstatement ☐ Couple _____
 _____ Student (30 years or younger)

Remit: \$35.00 for single membership (\$30.00 dues, plus \$5.00 application fee)
 \$50.00 for couple membership (\$45.00 dues, plus \$5.00 application fee)
 \$20.00 for student membership (\$15.00 dues, plus \$5.00 application fee)

Enclosed is \$_____ for one year's dues and application fee. Checks/money orders only. Make checks payable to **Wasatch Mountain Club**. Do you wish to receive the **Rambler** (the Club publication)? ☐ Yes ☐ No
 (Subscription price is NOT deductible from the dues.)

Activity Section

You must complete two Club activities (other than socials) to be considered for membership. The activity dates must have been within one year of the application.

<u>Qualifying Activity</u>	<u>Date</u>	<u>Signature of Recommending Leader</u>
1. _____	_____	_____
2. _____	_____	_____

I found out about the WMC from _____

Mail application and check to: Membership Director
 Wasatch Mountain Club
 1390 South 1100 East, Suite 103
 Salt Lake City, UT 84105-2443

Leave Blank—For Office Use Only

Receipt/Check # _____ Amount Received\$ _____ Date Received _____ By _____

Board approval date _____

Please Complete Both Sides

WASATCH MOUNTAIN CLUB (WMC)

Applicant Agreement, Acknowledgment of Risk, and Release from Liability

VOLUNTARY PARTICIPATION: I acknowledge that my participation in any WMC activity is voluntary. No one is forcing me to participate.

ASSUMPTION OF RISK: I am aware that WMC activities involve risks, and could result in injury, illness, death, and damage or loss of property. These dangers include but are not limited to: the hazards of traveling in remote areas without medical services or care, the forces of nature, the inherent dangers involved in participation in sports, wilderness travel, and social activities, and the negligent actions of other persons or agencies. I understand that all activities should be considered "exploratory", with the possibility of unexpected conditions and route variations. The WMC is not, nor does it provide, a professional guiding service. In order to partake in the enjoyment and excitement of WMC activities, I am willing to accept the risk and uncertainty involved as being an integral part of the activity. I acknowledge this risk, and assume full responsibility for any and all risks of injury, illness, death, or damage and loss to my property.

I verify this statement by placing my initials here: _____

PREPARATION: I understand that it is my responsibility to evaluate the difficulty of any activity I participate in, and decide whether I am prepared by having the experience, skill, knowledge, equipment, and the physical and emotional stamina to safely participate.

RELEASE OF LIABILITY AND PROMISE NOT TO SUE: I agree that I, my heirs, and personal or legal representatives hereby do release and hold harmless from all liability, and promise not to bring any suit or claim against, the Wasatch Mountain Club, its leaders, directors, agents or representatives for any injury, illness, death, or damage and loss to property resulting from my participation in any WMC activity even if they negligently caused the injury or damage.

LEGAL FEES: Should it become necessary for WMC, or someone on their behalf, to incur attorney's fees and costs to enforce this agreement, I agree to pay WMC reasonable costs and fees thereby expended, or for which liability is incurred.

INSURANCE: I certify that I have sufficient insurance to cover any bodily injury or property damage that I may incur while participating in any WMC activity. If I have no such insurance, I certify that I am capable of paying for all such expenses and liabilities.

My signature below indicates that I have read this entire document, understand it completely, understand that it affects my legal rights, and agree to be bound by its terms. I am at least 18 years old.

Signature _____ Print name _____

Address _____

Phone _____ Date _____

WITNESS: I certify that _____ has alleged to me that he/she has read and understands this document.

Witness signature _____ Print name _____

Address _____

Phone _____ Date _____

THE WASATCH MOUNTAIN CLUB

Membership applicants must participate in at least two Club outdoor or service activities. Yearly dues are \$30 single, \$45 couple, \$15 student, \$5 application and reinstatement fee.

GOVERNING BOARD 1999-2000

President and Directors

President	521-4185	Brad Yates	brysic@earthlink.net
Vice President	969-5842	Tom Walsh	cletejac2@cs.com
Secretary	444-0315	Leslie Whited-Vance	dvlv@softcom.net
Treasurer	272-8059	Kathy McKay	kathy@aros.net
Membership Dir.	277-1043	Carol Coulter	ccwired@xmission.com
Hiking Director	649-9008	Cheryl Soshnik	csoshnik@uswest.net
Boating Director	292-8332	Vera Sondelsk	vera@digitalpla.net
Conservation Dir.	521-8554	Susan Sweigert	
Entertainment Co-Dirs.	255-4713	Carol Ann Langford	
	968-1252	Martin Clemans	
Lodge Co-Directors	943-1871	Linda Kosky	lkosky@uswest.net
	523-0790	Bill Hughes	
Mountaineering Co-Dir	942-0641	Alan Lindsay	Aklindsay@aol.com
	534-1262	Walt Haas	haas@xmission.com
Publications Dir.	814-7724	Bob Janzen	wmc@xmission.com
Winter Sports Dir.	969-5842	Tom Walsh	
Bicycling Dir.	250-3882	Tim MacDonald	tim333@networld.com
Information Dir.	776-9206	Alan Brennan	

TRUSTEES

1997-01 term	649-6805	Vince DeSimone	vincedesimone@yahoo.com
1998-02 term	474-0275	Joan Proctor	joanptch@aol.com
1999-03 term	943-8500	Phyllis Anderson	phyllis@sisna.com
1996-00 term	278-5826	John Veranth	
<i>Emeritus</i>	355-7216	O'Dell Petersen	
<i>Emeritus</i>	277-6417	Dale Green	

COORDINATORS

BOATING

Canoeing	255-4336	Eileen Gidley
Kayaking		open
Sailing	435-649-6805	Vince DeSimone
Rafting		open
Boating Equ.	733-7740	Dudley McIlhenny
	273-0315	Bret Mathews
		open
Boating Instr.		
River Issues	486-1476	Allan Gavere

LODGE

Lodge Use	278-2535	Julie Mason
-----------	----------	--------------------

WINTER SPORTS

Snowshoeing	296-1716	Larry Nilssen
Ski Touring	486-7829	Edgar Webster

ENTERTAINMENT

In-Line Skating	486-7829	Dave Vance
-----------------	----------	-------------------

INFORMATION

Adopt-A-Highway	943-0244	Randy Long
Webmaster	571-7684	Mike Dege
		(mdege@novell.com)

PUBLICATIONS

Commercial Adv.	583-1678	Jaelene V. Myrup
Rambler Mailing	364-4544	Chris Venizelos
Activities	537-7969	Rob Merritt

CONSERVATION

Trails Issues	364-5729	Chris Biltoft
---------------	----------	----------------------

HISTORIAN

Historian		Mike Treshow
-----------	--	---------------------

Commercial Advertising

The Rambler encourages and supports your products and services through pre-paid commercial advertisements. Advertisements must be camera ready and turned into the advertising director no later than the 15th of the month prior to publication. Prepayment is necessary for single month advertisements with invoicing and net 30 for repeat advertisements. Contact the Commercial Advertising Coordinator for information or to place an ad.

Full Page	\$95.00	7" x 9"
Half Page	\$50.00	7" x 4.5" Horizontal 3.5" x 9" Vertical
Quarter Page	\$30.00	3.5" x 4.5" square 7" x 2.25" horizontal 2.25" x 9" vertical
Business Card	\$15.00	3.5" x 2"

**AVALANCHE AND MOUNTAIN
WEATHER INFORMATION
IN
SALT LAKE CITY
364-1581**



check the
web
www.xmission.com/~wmc

**PERIODICALS
POSTAGE PAID
SALT LAKE CITY, UT**

**WASATCH MOUNTAIN CLUB
1390 South, 1100 East
Salt Lake City, UT 84105**