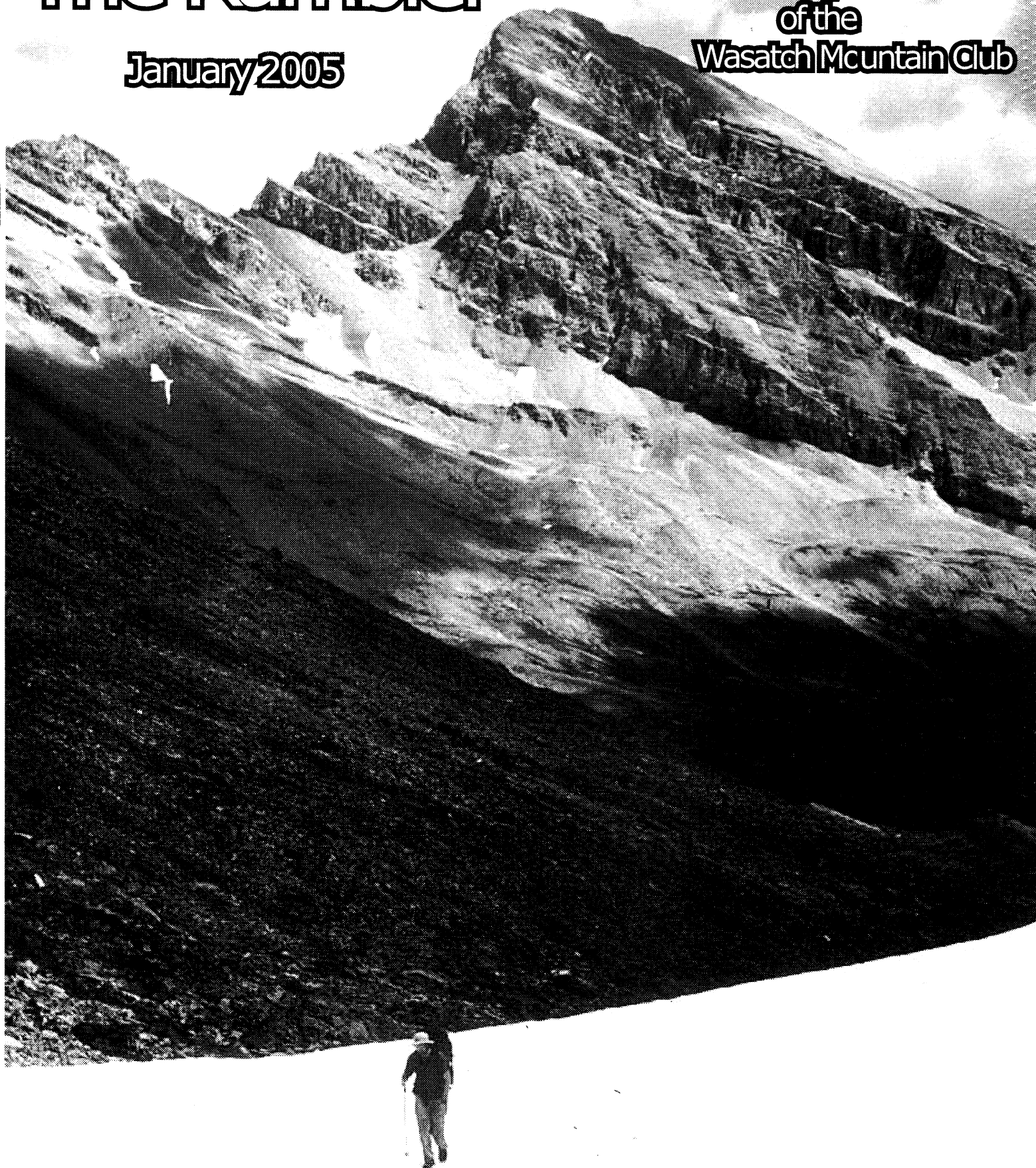


# The Rambler

January 2005

The Monthly Publication  
of the  
Wasatch Mountain Club



**Jan 22 Sat Social: Annual Awards Banquet**

Volume 84, Number 1  
THE WASATCH MOUNTAIN  
CLUB GOVERNING BOARD  
2003-2004 PRESIDENT AND  
DIRECTORS

Office Telephone: 463-9842  
1390 S. 1100 East # 103 Salt Lake  
City, UT 84105-2443  
[www.wasatchmountainclub.org](http://www.wasatchmountainclub.org)  
**President, Mike Budig**  
328-4512  
[mbudig@blazemail.com](mailto:mbudig@blazemail.com)

**Vice President, Donn Seeley**  
706-0815 [donn@xmission.com](mailto:donn@xmission.com)

**Secretary,**  
Adrienne Boudreaux  
278-9894 [aeboudreaux@yahoo.com](mailto:aeboudreaux@yahoo.com)

**Treasurer,**  
Craig Ringgenberg  
483-2228 [craigring@msn.com](mailto:craigring@msn.com)

**Membership:**  
Dudley McIlhenny  
[contextny@aol.com](mailto:contextny@aol.com) 733.7740

and Carol Ann Langford  
[carolannlangford@aol.com](mailto:carolannlangford@aol.com) 255.4713

**Biking,**  
Heidi Schubert 792-7765  
[heidi@biochem.utah.edu](mailto:heidi@biochem.utah.edu)

**Boating:**  
Larry Gwin  
[ljpgenuel@yahoo.com](mailto:ljpgenuel@yahoo.com)

**Conservation,**  
Will McCarvill  
(942-2921) [lizandwill@msn.com](mailto:lizandwill@msn.com)

**Entertainment,**  
Jeanine Kuhn  
(808-5097)  
AND Julie Oldroyd  
915-1394 [joldroyd@co.slc.ut.us](mailto:joldroyd@co.slc.ut.us)

**Hiking,**  
Donn Seeley  
706-0815 [donn@xmission.com](mailto:donn@xmission.com)

**Information,** Heidi DeMartis  
942-8088  
[heididemartis@excite.com](mailto:heididemartis@excite.com)

AND Chris Carroll  
[ccarroll67@juno.com](mailto:ccarroll67@juno.com)

**Lodge, Dave Trask**  
273-0090 [dvt@diviti.com](mailto:dvt@diviti.com)

**Mountaineering,** Craig Homer  
[sail2mountains@earthlink.net](mailto:sail2mountains@earthlink.net)

**Publications:**  
Cristina AmatdiSanFilippo  
[wmc@xmission.com](mailto:wmc@xmission.com)

**Winter Sports,** Michael Berry  
(583-4721) [mberry@attglobal.net](mailto:mberry@attglobal.net)

**COORDINATORS:**  
Adopt-a-Highway, Randy Long  
(943-0244)

**Boating Equipment,** Bret Mathews  
(273-0315)  
[bretmaverick999@yahoo.com](mailto:bretmaverick999@yahoo.com)

**Commercial Ads,** Jaelene Myrup  
(583-1678)

**Historian,** Mike Treshow, (582-0803)

**In-Line Skating,** Dave Vance (801)444-0315

**Kayaking** (Vacant)

**Lodge Use,** Julie Mason,  
[jasmason@xmission.com](mailto:jasmason@xmission.com)  
(278-2535)

**Rambler Mailing,** Chris Veni-  
zelos(8015543697)

**Sailing,** Vince DeSimone(435-649-6805)  
[vincedesimone@yahoo.com](mailto:vincedesimone@yahoo.com)

**Ski Touring,** Steve Pritchett 523-9243

Snowshoeing VACANT  
Trail Issues, VACANT

**Webmaster,** Jim and Bonnie Zinanti 571-1454  
[webmaster@wasatchmountainclub.org](mailto:webmaster@wasatchmountainclub.org)

**Trustees**  
Tom Walsh 487-1336(2002-2006)  
[twalsh.4ucro@uc.usbr.gov](mailto:twalsh.4ucro@uc.usbr.gov)

Linda Kosky (943-1871)2001-2005  
[lindakosky@msn.com](mailto:lindakosky@msn.com)

John Veranth 278-5826 (2003-2007) [john.veranth@m.cc.utah.edu](mailto:john.veranth@m.cc.utah.edu)

Alexis Kelner 359-5387  
[Kelner@xmission.com](mailto:Kelner@xmission.com)

**Trustee Emeritus**  
Dale Green (277-6417)

The Rambler (USPS 053-410) is published monthly by the Wasatch Mountain Club. Subscription rates of \$12.00 per year are paid for by membership dues only. Periodicals Postage Paid at Salt Lake City, Utah. POSTMASTER: Send address changes to The Rambler, Membership Director, 1390 South 1100 East, Salt Lake City, UT 84105-2443.

**CHANGE OF ADDRESS:** This publication is not forwarded by the Post Office.

The right is reserved to edit all contributions and advertisements, and to reject those that may harm the sensibilities of WMC members or defame the WMC.

Copyright 1999 Wasatch Mountain Club.

**COMMERCIAL ADVERTISING:** The Rambler encourages and supports your products and services through pre-paid, commercial advertisements.

**Contact Jaelene Myrup (583-1678) or email to [wmc@xmission.com](mailto:wmc@xmission.com) for information or to place an ad.**

Advertisements must be in electronic format as: .doc, .pdf, .jpeg or bmp and send to [wmc@xmission.com](mailto:wmc@xmission.com) no later than the 10th of the month prior to publication.

Prepayment is necessary for single month advertisements and invoicing and net 30 for repeat advertisements.

**Full Page: \$95/month**

**Half Page: \$50/month**

**Quarter Page: \$30/month**

**Business Card: \$15/month**

**Paperwork** ...<http://www.xmission.com/~wmc/MainSite/info/general.html>

**Moving?** Please call the WMC office or send your new address to the Membership Director. Allow 45 days for address changes.

**Missing your Rambler?** Contact the Membership Director to make sure the WMC has your correct address. Replacement copies are available, while they last, at the WMC office during office hours.

**Peter Hartley ascending Cataract Pass, Jasper National Park, Alberta, photo by Donn Seeley**

# WMC Purpose:

(Article II of the WMC Constitution)

*The purpose shall be to promote the physical and spiritual well being of its members and others by outdoor activities; to unite the energy, interests, and knowledge of students, explorers, and lovers of the mountains, deserts, and rivers of Utah; to collect and disseminate information regarding the Rocky Mountains in behalf of science, literature and art; to explore and picture the scenic wonders of this and surrounding states; and to foster awareness of our natural areas including their plant, animal, and bird life.*

**\*\*\*Participation in any WMC activity can be dangerous. It is your responsibility to evaluate your own preparedness and ability to safely participate in any activity. Please be sure to read and re-read the release forms in the back of this publication, as well as on the sign-up sheets at the beginning of each activity!!!!**

## How to submit trip talks or pictures:

1. Email them to: [wmc@xmission.com](mailto:wmc@xmission.com)

2. The deadline is 6:00 p.m. on the 10th of the month. We ONLY accept files as attachment in the follow format: word document , jpeg, jpg, bmp . pdf( if is single page) the maximum size acceptable is 300kb everything else will be discarded



The all new Saab 9-2X with tenacious all-wheel drive handling, road-blistering performance and 5-door versatility.

Thrills start at  
**\$22,990** MSRP\*  
MSRP of \$28,900 for model shown.

Hang on to your change. The all new, all-wheel drive Saab 9-2X

Saab 92X

Welcome to the state of independence



[www.saabusa.com](http://www.saabusa.com)

1 800 SAAB USA



**THE BACK-U-UP PROMISE**

Value - Up to 10 Year/250,000 Mile Limited Engine Warranty

Protection - Free 24/7/365 Roadside Assistance

Selection - 24 Vehicle Brands Available

Convenience - 26 Sales & Service Locations from Ogden to Provo



Large Selection of Certified Pre-Owned Saabs



**Ken Garff™  
Saab  
Downtown**

Eligible for GM Employee/Supplier Purchase Programs • European Delivery Program Available

560 So. 200 E., SLC, UT 84111 • 800.725.3741 • 801.257.3110 • [www.kengarffsaab.com](http://www.kengarffsaab.com)

## **From the President....by Michael Budig**

Winter is sure off to a roaring start in the Wasatch- and the Mountain Club lodge is a beacon of warmth and atmosphere on the slopes. Recent parties at the lodge have confirmed the value of the lodge as the heart and centerpiece of the club and a link to the history, traditions and past of the Club.

The Nominations /Awards banquet will be held on Saturday, January 22. For the third year in a row, the event will be at the Jewish Community Center- with entertainment provided by the Disgusting Brothers. The Jewish Community Center is quite a beautiful facility and I encourage members to attend- it will be a fun event- and an interesting chance to try to recognize people dressed in unusual attire.

I want to thank the nominations committee (Gloria Watson, Brett Smith and Vince Desimone) for their work in selecting and persuading members to run for office. Members who may be inclined are encouraged to contact the nominating committee to volunteer to run.

At the press deadline, the slate of candidates is as follows:

**Treasurer:** Shirley Streff

**Secretary:** Patty O'Keefe

**Entertainment:** Open

**Information:** open

**Publication:** Vivian Lee, Heidi Schubert

**Lodge:** Dave Rabiger (and probably Zig Sondelski and/or Clayton Rand)

**Winter Sports:** open

**Mountaineering:** Craig Homer

**Trustee:** Linda Kosky

**Biking:** Audrey Rindfleisch

**Hiking:** Donn Seeley

**Conservation:** Will McCarvill

**Membership:** Carol Ann Langford and Dudley McIlhenny

**President:** Michael Budig

The Board approved purchase of a new snowthrower for the lodge- hopefully this will work much better than the previous snowthrower and allow snowclearing operations to keep up. It appears likely to get a serious test right away.

## **From the Boating Director:**

We'll be having the Permit Party in January. Please stay tuned to the Rambler and the Boating Email list for the dates. We need a big turn out so we have a number of people applying for permits. No permits No Boating. Below is a list of where to apply for permits.

C-----THIS YEARS BOATING ACTIVITIES:					
DATES (#DAYS)	RIVER	CL	ORGANIZER	TELEPHONE	EMAIL
JAN 6 / 1 day	Permit Party	I	Larry Gwin	435-647-3642	ljgpenuel@yahoo.com

# WINTER SPORTS RATINGS

Here is the listing of snowshoe and ski tours and the ratings according to difficulty. All mile numbers are ROUND TRIP, from beginning to end. Unless otherwise noted, all trips are in the BACKCOUNTRY. These types of trips may be rated 'Not too difficult' (NTD), but more often are rated 'Moderate' (MOD), or 'Most difficult' (MSD). They more likely encounter avalanche paths, and generally cross areas with steeper terrain. Avalanche beacons and shovels are strongly recommended for these type of trips, and may be required by the trip organizer (see trip descriptions). Typical examples are Powder Park of Catherine's Pass. A trip labeled TOUR is one which mostly follows along a groomed trail, or above an un-groomed road surface and generally has a gentler grade, and less risk of encountering avalanche paths. These types of trips are often rated NTD, but occasionally are rated MOD, or even MSD to length. Avalanche beacons are recommended on a more selected basis. Typical examples are Beaver Creek, or Norway Flats. 'Ski mountaineering' (SKI-MTN) is a rating for difficult trips which, in addition to snow gear and avalanche beacons, include boot climbing on exposed terrain and require self-arrest skills. The rating is determined by the most difficult technical requirement of the trip. For example, Pink Pine is short, but it is quite steep, so it is rated MSD.

**\* Avalanche knowledge is a prerequisite for winter travel.** A new rating category for AVALANCHE AWARENESS has been compiled by the Winter Sports Committee to help you assess the relative risk for each trip. Legend- **A!** - trip crosses major avalanche path and/or multiple avalanche paths; **A** - trip crosses known avalanche path; **M** - trip involves minimal risk of avalanches.

## EL and NTD RATINGS

LOCATION	ROUTE	RATING- *	MILES	VERTICAL	COMMENT
Daniels	Telephone Hollow	EL-NTD M	3.0	300	Tour
Wasatch	Albion Basin Road	EL-NTD M	3.0	600	Tour
Wasatch	Mill Creek Road to Elbow Fork	EL-NTD M	3.0	680	Tour
Wasatch	Willow Lake	NTD M	3.0	800	
Wasatch	Lake Mary	NTD A	3.0	910	
Daniels	Doe Knoll	EL-NTD M	5.0	300	Tour
Wasatch	Green's Basin from Spruces	NTD M	4.0	1000	
Wasatch	Lower Mineral Fork	NTD A	4.0	1000	
Uintas	Smith & Morehouse Canyon to Ledgefork Campground	NTD M	6.0	400	Tour
Daniels	Foreman Trail	NTD M	4.0	900	Tour
Daniels	Telemark Hill	NTD M	5.0	1000	Tour
Uintas	Bench Creek	NTD M	7.0	600	Tour
Wasatch	Catherine's Lake	NTD A	4.4	1200	
Wasatch	Silver Fork from Lodge	NTD A	5.0	1280	Tour
Wasatch	Lower White Pine Canyon	NTD A	5.0	1400	
Wasatch	Catherine's Pass from Alta	NTD A	5.0	1500	
Wasatch	Dog Lake	NTD A	6.0	1400	
Daniels	R Fork Little Hobble Creek to Valle	NTD M	7.0	1150	Tour
Wasatch	Days Fork to Second Meadow	NTD A	6.0	1600	
Uintas	North Fork of Provo River	NTD M	8.0	600	
Uintas	Beaver Creek Trail	EL-NTD M	10.0	600	Tour
Wasatch	Snake Creek Canyon	NTD+ A	7.0	1800	Tour
Wasatch	Mill Creek Road to Turn-Around	NTD+ M	10.0	1500	Tour

## MOD RATINGS

LOCATION	ROUTE	RATING- *	MILES	VERTICAL	COMMENT
Uintas	Weber Canyon Road	MOD M	16.0	600	Tour
Wasatch	Butler Fork to Overlook	MOD A	3.0	1500	
Wasatch	Brighton to Twin Lake Pass	MOD A!	4.0	1300	
Wasatch	Grizzley Gulch to Twin Lakes Pass	MOD A!	4.0	1320	
Wasatch	Tom's Hill	MOD A	4.0	1600	
Wasatch	Bill's Hill	MOD A	3.4	1800	
N. Wasatch	Little Dell-Affleck Park-Big Mtn	MOD M	11.0	1320	Tour
Wasatch	Catherine's Pass from Brighton	MOD A!	5.0	1500	
Wasatch	USA Bowl	MOD A	4.0	1800	
Wasatch	Powder Park (Near)(South)	MOD A	4.0	1800	
Uintas	Yellow Pine Trail	MOD M	7.0	2400	
Daniels	Main Canyon -Murdock Hollow	MOD M	10.0	1400	Tour
Daniels	Strawberry Peak	MOD A	10.0	1700	Tour
Uintas	Little S. Fork-Willow Hollow Loop	MOD M	10.0	2000	
Daniels	Clyde Creek- Mud Creek Loop	MOD M	14.0	1000	
Stansbury	Deseret Peak Bowl	MOD A	9.0	2800	
Wasatch	Big Water via Dog Lake	MOD A	6.4	1400	
Wasatch	Alta to Brighton via Twin Lakes P	MOD A!	8.0	1320	
Uintas	Smith Morehouse C. to Erickson B.	MOD A	15.0	1200	
Uintas	Murdock Basin	MOD M	15.0	1400	

Uintas	Upper Setting Road	MOD	M	12.0	2300	Tour
Uintas	Norway Flats Road	MOD	M	12.0	2530	Tour
Uintas	Red Pine Canyon to Mud Lake Flat	MOD	A	14.0	2235	
Wasatch	Lake Desolation	MOD	A	8.0	1900	
Wasatch	Brighton to Alta via Catherine's P	MOD	A!	10.0		
Wasatch	Red Pine Lake	MOD	A	8.0	2000	
Uintas	Soapstone to N. of Iron Mine Mtn	MOD	M	14.0	2240	
Uintas	Shingle Creek	MOD	M	14.0	2460	
Wasatch	Green's Basin Peak	MOD	A	6.0	2380	
Wasatch	Meadow's Chutes	MOD	A!	6.2	2380	
Wasatch	Reynold's Peak	MOD	A	7.0	2100	
Wasatch	Little Water via Dog Lake	MOD	A	7.4	2100	
Wasatch	Powder Park (Middle)	MOD	A	7.0	2200	
Wasatch	Day's Fork to Upper Cirque	MOD+	A!	8.0	2000	
Wasatch	Bear Trap to Lookout	MOD+	A	7.0	2400	
Wasatch	Powder Park (Far)(North)	MOD+	A	8.0	2040	
Wasatch	Upper Red Pine Lake	MOD+	A!	7.0	2400	
Wasatch	Montreal Hill	MOD+	A!	7.0	2700	
Heber	Main Canyon (Wallsburg to Strawb)	MOD+	M	15.0	3650	
Wasatch	White Pine Lake	MOD+	A!	9.0	2400	
Uintas	Windy Ridge	MOD+	A!	7.6	3200	
Wasatch	Alta-Brighton-Alta	MOD+	A!	9.0	2800	

### MSD RATINGS

LOCATION	ROUTE	RATING- *	MILES	VERTICAL	COMMENT
Wasatch	Pink Pine	MSD A!	2.0	1000	Short & Steep
Wasatch	Cardiff Pass	MSD A!	2.0	1400	Short & Steep
Wasatch	Flagstaff Mountain	MSD A!	2.8	2000	Short & Steep
Wasatch	Cardiff Pass to Big Cottonwood C.	MSD A!	5.0	Traverse	1400 u 2800 d
Wasatch	Silver Fork via Brighton Twin Lakes	MSD A!	6.0	Traverse	1460 u 2400 d
Wasatch	Day's Fork to Big Cottonwood C.	MSD A!	5.5	Traverse	2000 u 3200 d
Wasatch	Mary Ellen	MSD A!	9.2	1820	
Wasatch	Soldier Fork	MSD A	9.0	Traverse	1600 u 2800 d
Wasatch	Tuscarora- Wolverine	MSD A!	8.0	2100	
Wasatch	Alexander Basin via Butler to Log H	MSD A!	7.0	Traverse	2600 u 3100 d
Wasatch	Silver Fork Crest	MSD A!	8.0	Traverse	2200 u 3400 d
Wasatch	Maybird Canyon	MSD A!	6.5	Traverse	2440 u 3000 d
Wasatch	Porter Fork	MSD A!	7.0	Traverse	2200 u 3400 d
Wasatch	Lake Blanche to Bif Cottonwood C	MSD A!	8.0	Traverse	2600 u 4600 d
Wasatch	Mineral Fork from Alta	MSD A!	7.0	Traverse	2900 u 3500 d
Wasatch	Gobbler's Knob via Butler	MSD A!	7.0	3140	
Wasatch	Mt. Raymond via Butler Fork	MSD A!	7.0	3140	
Wasatch	Major Evans	MSD A!	9.2	2700	
Wasatch	Wilson Fork	MSD A!	11.0	Traverse	2600 u 3800 d
Wasatch	White Pine from Alta	MSD A!	10.8	2700	
Stansbury	Victory Mountain	MSD A!	10.0	3800	
Uintas	Hoyt Peak via Swift's Canyon	MSD A	14.0	3530	
Uintas	Hoyt Peak via Hoyt Canyon	MSD A	14.0	3601	
Stansbury	Deseret Peak from Guard Station	MSD A!	12.0	4500	
Uintas	Norway Flats to Smith Morehouse	MSD+	A	18.0	2680
Uintas	Weber River to Norway Flats	MSD+	A	20.0	2800
Daniels	Currant Creek Peak	MSD+	A	21.0	2800
Wasatch	Triple Traverse- Alta to Toll Canyon	MSD+	A!	16.0	Traverse 5700 u 7600 d
Uintas	King's Peak (length!)	MSD+	A	36.0	6800 Very long

### SKI-MTN RATINGS

LOCATION	ROUTE	RATING- *	MILES	VERTICAL	COMMENT
Wasatch	Mt. Superior	SKI-MTN A!	6.0	2700	
Wasatch	Pfeifferhorn via White Pine Canyon	SKI-MTN A!	10.0	3700	
Wasatch	Superior and Monte Carlo from Alta	SKI-MTN A!	10.0	4810	
Wasatch	Twin Peaks via Broad's Fork	SKI-MTN A!	10.0	5100	
Wasatch	Box Elder peak from Dry Fork	SKI-MTN A!	12.0	5600	
Wasatch	Pfeifferhorn from Dry Creek	SKI-MTN A!	12.0	5630	
Wasatch	Mt. Nebo from Mona	SKI-MTN A!	14.0	6700	
Wasatch	Bells Canyon Supertour Traverse	SKI-MTN A!	14.0	Traverse	3500 u 5700 d
Wasatch	Lone Peak via Supertour Route	SKI-MTN A!	16.0	5854	
Wasatch	Timpanogos from Timpooneke	SKI-MTN A!	22.0	6500	

Editorial Note: Snowshoe and Ski ratings above are listed in order of difficulty, according to this algorithm:

Difficulty = ( M ) + ( 3K ). M is the round trip miles including tenths, if any. K is the thousands of feet of altitude gain including tenths, if any. For example: Catherine's Lake at 4.4 miles round trip and 1200 feet of altitude gain:

$$\begin{aligned} & ( M ) + ( 3 \times K ) \\ & ( 4.4 ) + ( 3 \times 1.2 ) \\ & ( 4.4 ) + ( 3.6 ) = 8.0 \end{aligned}$$

If the outing is labeled as a TOUR, factor the difficulty answer by ( 0.6 ). Example: Foreman Trail at 4 miles length and an altitude gain of 900 feet calculates as follows:

$$\begin{aligned} & ( M ) + ( 3 \times K ) \times ( 0.6 ) \\ & ( 4 ) + ( 3 \times .9 ) = 6.7 \\ & ( 6.7 ) \times ( 0.6 ) = 4 \end{aligned}$$

u

Localized trail conditions may vary throughout the season and affect the actual difficulty on any given day (e.g. trail breaking, icy, bare spots, wind, warm, cold).

# **Tuesday, Feb 15:**

## **General Membership Meeting/ Elections**

**The meeting will start at 7:00 PM  
a mount Olympus Presbyterian  
Church (3280E 3900 S) Refresh-  
ments will be provided.**

# **Jan 22 Sat Social: Annual Awards Banquet**

**The WMC would like everyone to plan to attend this wonderful event! Come to the Jewish Community Center (2 North Medical Drive) at 6:45 PM for cocktails and to talk with all of your friends. Dinner will be at 7:00 and then the awards will be given out. After that we will dance the night away to the the fabulouse music of the Discusting Brothers. The cost will be \$25 and BYOB.**

**Send your money to Jeanine Kuhn at 516  
12th Ave, SLC, UT 84103 by Jan 14  
Questions call Jeanine 808-5097**



# MARKETPLACE:

This is for members placing ads for used, recreational gear or for private and non-commercial and not-for-profit activities.

To submit an add to the Marketplace: Email ads to: [wmc@xmission.com](mailto:wmc@xmission.com) Use the subject line marketplace.

Adds are due the 10th of each month. Contact the Editor, Cristina AmatdiSanFilippo, at [wmc@xmission.com](mailto:wmc@xmission.com) if you have questions. \$5.00 up to 20 words, \$.20 per additional word.

No charge for : WMC members placing ads for used recreational gear  
: Private /non-commercial /not for profit activities

## WMC history book "ONWARD AND UPWARD"

### AVAILABLE FREE at the WMC office

The Board has approved making a copy of "Onward and Upward", by Mike Treshow and Jean Frances, available to WMC members at no charge. This is a wonderful history of the Club commissioned on the WMC 75th anniversary. New members and old timers will find this an excellent way to learn more about the Club and get more involved. Please swing by the WMC office any time during business hours and pick one up!(No copies will be mailed due to the cost.)

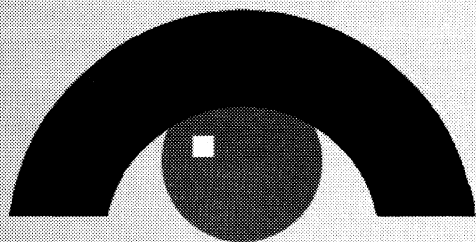
SNOWSHOES FOR SALE: MSR Denali Classic used last season-good condition \$65. New pair also available \$90.mailto:\$90. [vincedesimone@yahoo.com](mailto:vincedesimone@yahoo.com) or 435 649 6805. (02-05)

For Sale: Atomic C:9 alpine skis. Length: 180cm. (106/64/96) Atomic Device:412 bindings. Used less than 10 days. Mint condition. Price: \$399. Call Ira at 944-5946 (03-05)

Thule bike rack. Car top model. Fits vehicles with rain gutters. Set up to hold two bikes. Locking bars. \$100.00 Call Rob at 485-3262; or email [wildvagabond@yahoo.com](mailto:wildvagabond@yahoo.com) (03-05)

Carpet kit for Ford Ranger or Mazda pickup (6' bed). \$100.00 Call Rob at 485-3262; or email [wildvagabond@yahoo.com](mailto:wildvagabond@yahoo.com) (03-05)

## Setting the standard in Salt Lake City & Park City for remodeling



# ICON REMODELING

Design / Build

Additions

Whole House Remodels

Kitchen & Bathrooms

Full Service Remodeling

Owned & Operated by WMC member Robert Myers

1448 East 2700 So. - Salt Lake City, UT 84106 - [www.icon-remodeling.com](http://www.icon-remodeling.com) - Phone: (801) 485-9209 - Fax: (801) 484-4639

# BULLETIN BOARD

## The WMC Lodge

now with flush toilets and hot showers!!! ,can be rented on a full- or half-day basis.

### WMC Club Member Rates

October 1-May 31----\$250/24 hour period

June 1-Sept 30-----\$300/24 hour period

### Non Member Rates

October 1-May 31---\$300/24 hour period

June 1-Sept 30-----\$350/24 hour period

### Weddings or Wedding Receptions

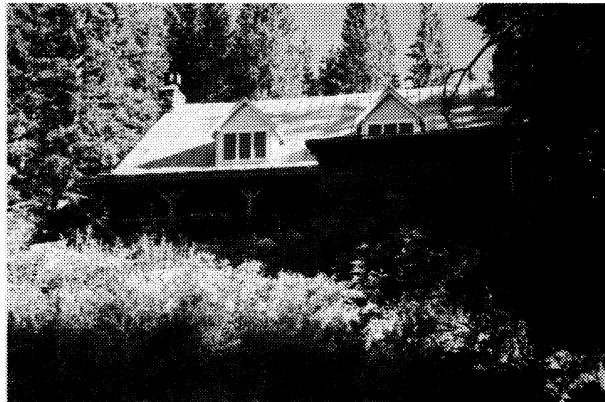
WMC members \$400 per 24 hour period

Non members \$500 per 24 hour period

Club members can earn a \$50 voucher by participating in lodge service projects.

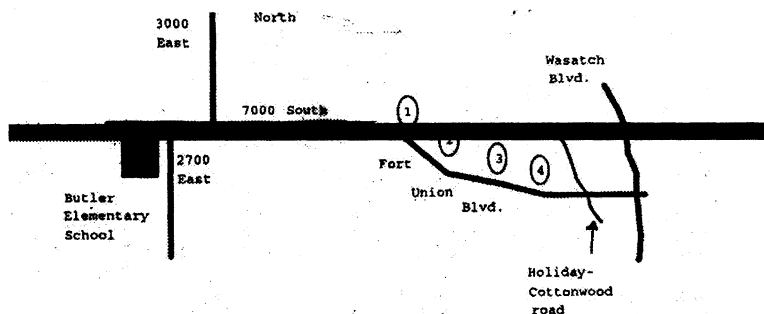
There will be a lodge work party every month so please check the activity schedule for details Contact Julie Mason at 278-2535

There is a new club email list, wmc-lodge, for use of the lodge committee and anyone interested in supporting the WMC lodge. To join this list, send an email to: majordomo@haas.dsl.xmission.com containing the text subscribe wmc-lodge You will receive a message asking for confirmation, which you must reply to before you are on the list.



Want to know the weather ??, flash flood potential, active radar screen and much more for all of the USA? Visit <http://www.wrh.noaa.gov/> (thanks to WMC Member Jaynee Levy BLM Outdoor Recreation Specialist Price Field Office, UT phone 435 - 636-3620 fax 435-636-3657)

## DIRECTIONS TO OTHER COMMON MEETING PLACES FOR WINTER SPORTS ACTIVITIES



Skyline High east parking lot: about 3330 E. 3800 South – from the intersection of Wasatch Boulevard and the Mill Creek road (3800 South), go west under I-215 freeway, then turn north (right) into the entrance opposite Birch Drive (3330 East).

Parley's Way K Mart lot: 2705 Parley's Way – from Parley's way, turn north into the parking lot; or from Foothill Drive, turn west on Stringham Ave. (2295 South) and then south into the lot (SE corner).

Cottonwood Park and Ride lot: 6450 S. Wasatch Boulevard – go two lights east and south on 6200 S. from the I-215 overpass and turn east (left) onto Wasatch Blvd.; the lot is immediately on your left. Sometimes used as an overflow lot for Big Cottonwood.

## CAR POOL PARKING LOTS FOR SKIING AND SNOW-SHOEING

### Butler Elementary School

Access the parking lot from 2700 East just south of 7000 South. (from Union Blvd.) We do not have a guarantee that cars won't be towed from here in the event of snow.

### Fort Union County Parking lots

The numbers are for the WMC. Don't expect to see any membership signs, these are basically wide pullouts on the north side of Fort Union Blvd. County time restrictions are to be followed. NO PARKING FROM 10 PM TO 8 AM.

#### Lot #1

3220 East Fort Union Blvd. (7000 South)  
This lot will hold an estimated 5 cars.

#### Lot #2

3360 East Fort Union Blvd. (7090 South)  
This lot will hold an estimated 10-15 cars.

#### Lot #3

3420 East Fort Union Blvd. (7140 South)  
This lot will hold an estimated 7 cars.

#### Lot #4

3600 East Fort Union Blvd. (7225 South)  
This lot will hold an estimated 10-15 cars.

# TRIP REPORT:

## PATAGONIA by Tom Walsh

Better late than never, right? This article describes a trip to Patagonia that Christel Sysak organized last spring, and it turned out to be a trip that really raised the bar for fun, memorable travel experiences and awesome scenery!

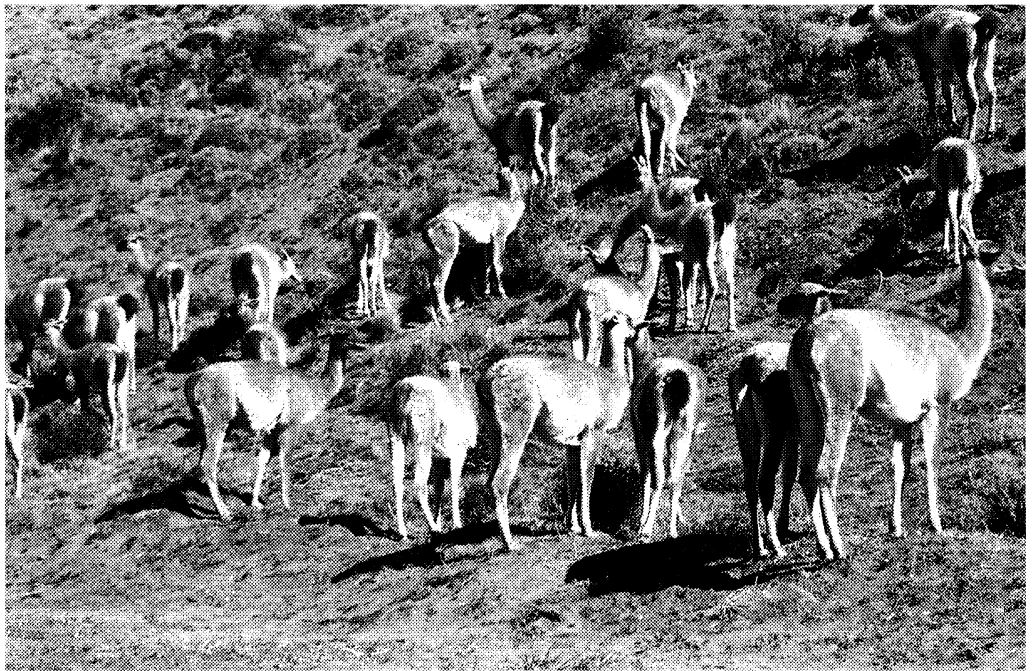
Our group of 8 was mostly uninformed about Patagonia – about all I knew was that it was windy, far away, and had good fishing. Located about as far South as Baghdad is East, the southernmost point of Patagonia is only 785 miles from Antarctica. Due

to its location at the bottom of the Pacific basin skirting Antarctica, the weather is frequently windy and wet with icy storms blowing in fast and unpredictably. I used to think that Patagonia was an arid flat plain covered with grazing sheep – partly true, however, we soon learned that mountains and glaciers dominate the scene. Beside the North and South Poles, the world's 3rd largest reserve of fresh water is the ice cap on the southern Andean peaks of Patagonia.

We landed in Puenta Arenas, the world's southernmost city and the gateway to Patagonia. From this point on the North coast of the Straits of Magellan, we traveled to Puerto Natales. The impression that formed in our minds as we traveled was the vast emptiness – there were no advertising signs on the road, no litter, no local access roads, just miles and miles of plains dotted with an occasional estancia. At lunch time, we stopped at an estancia where raising sheep had mostly been curtailed in favor of catering to travelers. After hot chocolate and sandwiches, we continued to Puerto Natales and unloaded at the quirky Concepto Indigo hostel. It had a 30' rock climbing wall outside and labyrinthian hallways inside. Plumbing was dubious, and some of the beds had mattresses like bags of grapefruit. I have stayed in lots of hotels and do not remember anything about them – I have stayed in just one Indigo hostel and have LOTS of memories about it.

Christel organized the trip around visits to two national parks where we could get up close and personal with Patagonia. At Torres del Paine National Park, we hiked to the moraine below the Park's extraordinary namesake mountains. We stopped on a ridge on the edge of a stunning azure lake at the base of the peaks. The mental image that came to mind was that I was a tiny germ at the base of a mighty row of canine teeth– long, smooth, pointy, and sharp. How do rock climbers ascend these things?

It was said that we might see guanacos, a grazing animal that resembles a llama. Our first sighting was at the entrance to Torres del Paine Park. We tumbled all over each other trying to get a picture of one. Later we encountered herds of them grazing with no apparent anxiety about proximity of humans with cameras. After a couple days, it got so that spotting a guanaco was about as common as seeing a fencepost. There was a lot of talk about spotting the rare and elusive huemul, which is the world's smallest deer. The writer



21 guanaco butts. Photo by T Walsh

claimed to have spotted one, however, our local tour guide said the animal was most likely a coyote. There was no disagreement about the spotting of a Magellanic Woodpecker, however. It's the world's largest woodpecker, about the size of a raven or maybe larger, with a bright red topknot. We saw one of these bad-boys in the process of chopping down a tree about 50 yards from our hiking trail. Any woodpecker tough enough to peck holes large enough to insert a fist into has got to be impressive!

After our trek to Torres del Paine, we hiked to Lago Grey and boarded an excursion boat that hauled us across the lake to the terminus of Grey Glacier. The names were perfect – the sky was grey, the lake water was greyish, the ice was a bluish grey. Being close to water level, we had to crane our necks to look up to at the spectacular pillars of ice in front of us. We were fortunate to have been at the right place and time to witness the calving of a medium sized iceberg. Later in our cruise, our crew fished a barrel-sized berg from the lake and chipped it into chunks suitable to cool our complimentary drinks of scotch or pisco (a local drink that is sort of a cross between wine and tequila). Water is so pure in Patagonia that it's OK to drink from any stream or lake without fear of dreadful pathogens like giardia.

After our introduction to the glacier world, we traveled from Chile to Argentina via bus and trekked to a tent city provided by our local guide company. Our excursion for the next day was hiking on a glacier and climbing an ice wall. Our Argentinean guide, Juan, and his helper showed us how to handle crampons to avoid gouging out our Achilles tendons. The glacier seemed like a living being with gurgling water and beams of reflected light glinting around randomly. Juan showed us how to slam the ice ax exactly right so it would hold our weight, but not be set so deep that it was a problem to extract. In our heads we knew that our little 40-foot wall was no big time ice climb like Bridal Veil Falls, but in our hearts we deluded ourselves into feeling that it was a real challenge---and it probably was for those of us who do no climbing, let alone ice climbing!

The second major park we visited was Los Glaciares National Park in Argentina. It is from there that climbers gain access to some of the toughest and most impressive mountains in South America. We were camped in an area where we could see Mount Fitzroy and Cerro Torre. Weather was perfect for taking pictures, with the light of the sunset evolving from yellow to orange to fuchsia. The next day the sky was clear so we could shoot yet more pictures in natural daylight. Juan said it was clear enough to see the Compressor Route from which Cerro Torre had been climbed in 1974 by Casimiro Ferrari.

We were uncommonly lucky with the weather – out of ten days, it only rained two. We were told it was more typical to have rain and wind at least half the time. Once while we were hiking on a ridgeline, a roaring noise arose from the west. In a minute a gale force wind was tearing at our clothes. Leading by example, Juan had us drop to all fours to wait out the wind in a push up position.

Christel really outdid herself in planning a memorable and beautiful trip. Somehow she managed to find us an amazing young female guide for the Chilean portion of our trip, who was actually German, but who spoke English fluently and Spanish like a native and whom we all fell in love with before we had spent a day with her! The lucky participants in this adventure were Christel Sysak, Jeff Schreyer, Ray Duda, Lorraine Lovell, Holly Smith, Tom Walsh, Barb Hanson, and our guest photographer, Alex Kravtsov.



Group shot with Cerro Torre obscured by clouds. Left to right: C Sysak, Suzi (the guide)(sitting), T Walsh, A Kravtsov, B Hanson, R Duda, L Lovell, J Schreyer, and H Smith (sitting). Photographer unknown.

## Party writeup by Frank Bernard

It was a bright and sunny day at Brighton and a festive evening at the lodge for the 8th Annual Christmas party on Saturday, Dec 4th. Although there was a lot of snow on the ground the snowshoe to Katherine Pass went quickly as it hadn't snowed recently and the trail was well trod. Lots of powder for off trail descents for those who get their kicks that way heading down slope on snowshoes. It's a great summertime hike and equally gorgeous in the winter - big pines, craggy rocks, mountain peaks- all the stuff for a nice outdoors experience.

Most were back at the lodge by 5 PM, gathered around the crackling fire place being convivial or finishing up the cooking and prep work in the kitchen. Folks continued to trickle in, several with guitars for the evening Christmas caroling. Several dozen of us were enjoying life at the lodge, sipping our favorite beverages, renewing old friendships and catching up on summer adventures by the time the turkeys and ham came out of the ovens and the rest of the potluck dinner was put out for dinner. Lots of yummy stuff - as a frequent participant in WMC potlucks over the past ten years, I'd say it was well above par. Congratulations to those who brought the great food to share.

Post dinner we sang carols around the fireplace. Four guitarists and Jeanine the pianist did their best to stay ahead of the eager singers, giving loud voice to many old standards. Some of them even sounded pretty good. One of the participants insisted we finish up by joining hands and doing a circle dance - Rocking Around the Christmas Tree definitely made the floor shake and put a final smile on everyone's face. Apparently it was an old family tradition and it certainly capped the singing.

Particular thanks to the organizers, Christine Allred, Frank Bernard, Bart and LaRae Bartoloma, Carol Ann Langford and Dudley McIlhenny. They brought and cooked the meat, made sure everyone had a plate and a place to sit, and cleaned it all up for the next lodge party when it was over- of course with the help of many of the participants. See you again next year and if you'd like to be one of the organizers feel free to contact us.

## A Note of Caution

Melvin Denis was a kind-hearted, enthusiastic, athletic, brilliant, and handsome young man. Melvin was staying in a spare bedroom in my basement while he was earning TWO simultaneous doctorate degrees in cutting edge medical research. He was due to become a U.S. citizen in a few days.

I remember Melvin's smiling face and the bounce in his walk as he set out Saturday morning, Dec 11 for a day of fun in the mountains. But I will never hear Melvin laugh again. Melvin was buried alive that day as he snowshoed in Mineral Fork basin. His body was discovered by rescue dogs the next evening.

Many of our snowshoers in the WMC have told me they are immune from avalanche danger because they don't go deep in the backcountry, and they don't ski the steepest of slopes. Melvin was on a slope that was almost flat, but he was hammered from above. This tragedy could happen to anyone. If you participate in winter activities and have not had avalanche training, or if you don't wear a beacon and shovel, or if you don't read the avalanche report every morning before you go out, please make a promise to yourself that you will change your ways. Educate yourself about avalanches. There have been enough fatalities in the backcountry this year. Please don't take chances.

Carolyn Clark, Ph.D.



# WASATCH MOUNTAIN CLUB ACTIVITIES

Only activities approved by the appropriate WMC director. can be listed in The Rambler Direct submissions to the Editor are NOT accepted; to submit my activity to the club: Send your proposed activity for approval to the appropriate director for inclusion in their activity schedule. The deadline is 6:00 p.m. on the 10th of the month.

## **Rules and regulations:**

1. **Dogs and children** are not allowed on WMC activities, except when specifically stated in the activity description.
2. **Car pool rates:** Gas plus \$0.15/mile, shared by everyone in the vehicle (including the driver) on 2WD roads, OR gas plus \$0.25/mile on 4WD roads.

**Notice to Non-Members:** Most WMC activities are open to prospective members except when specifically stated in the activity description.

## **Find out about unofficial activities on our email lists.**

A lot of activities are planned on the spur of the moment because of a good dump of snow! Don't be left out of the cold! Get on a list! NOTE: Activities formed with these lists are for members only. Lists are to be used **only** for the scheduling of outdoor activities. Any use of this service for any other purpose, such as advertising, SPAM, jokes, etc, will result in the loss of privilege. **To subscribe : WMC club email lists:** Send an email to: majordomo@haas.dsl.xmission.com with the text (not in the header section):

Subscribe wmc-bike  
Subscribe wmc-hike  
Subscribe wmc-climb  
Subscribe wmc-ski

Subscribe wmc-snowshoe

Subscribe wmc-lodge

**Boating List:** <http://groups.yahoo.com/group/wmcboaters/> and put yourself on the list.

## **Rating Difficulty Range:**

0.1-4.0 > **Not Too Difficult** (NTD)= lightly strenuous  
4.1-8.0 > **Moderate** (MOD)= Moderate to very strenuous  
8.1-11.0 > **Most Difficult** (MSD) > Very strenuous, difficult  
11.1+ > **Extreme** (EXT) > Very strong, well-seasoned hikers.

### **Other Factors:**

B > Boulder fields or extensive bushwhacking  
E > Elevation change in excess of 5,000 feet  
M > Round trip mileage in excess of 15 mi.  
R > Ridgeline hiking or extensive route finding  
S > Scrambling  
X > Exposure  
W= Wilderness area, limit 14

## **LIMITS ON GROUP SIZES IN WILDERNESS**

Some National Forest ranger districts have policies limiting the sizes of groups hiking in wilderness areas. For hikes where we understand that there are wilderness group size limits, we have appended the hike listing with a 'Limit' note indicating the maximum number of participants (not including the organizer). Please help out our organizers on hikes with group size limits by arriving promptly and behaving nicely if you can't be accommodated on the hike because of a limit.

\*\*\*\*\* Trip Organizers-I need your help!\*\*\*\*\*

Please make sure you send in the sign up sheet after the trip. It will be filed at the office. If the trip was cancelled, send the form in with "cancelled" written on it.

**\*\*\*Participation in any WMC activity can be dangerous. It is your responsibility to evaluate your own preparedness and ability to safely participate in any activity. Please be sure to read and re-read the release forms in the back of this publication, as well as on the sign-up sheets at the beginning of each activity!!!!**

## **Directions to common meeting places for hiking activities:**

**Mill Creek Canyon Park and Ride lot:** between 3800 S. and 3900 S. on Wasatch Blvd. this park and ride lot is CLOSED indefinitely for construction. Use the Skyline lot instead.

**Skyline High School east parking lot:** about 3330 E. 3800 South -- from the intersection of Wasatch Boulevard and the Mill Creek road (3800 South), go west under the I-215 freeway, then turn north (right) into the entrance opposite Birch Drive (3330 East).

**Big Cottonwood Canyon Park and Ride lot:** at the northeast corner of the Big Cottonwood Canyon Road and Wasatch Blvd. at the mouth of Big Cottonwood Canyon.

**Cottonwood Park and Ride lot:** 6450 S. Wasatch Blvd. -- go two lights east and south on 6200 S. from the I-215 overpass and turn east (left) onto Wasatch Blvd.; the lot is immediately on your left. Sometimes used as an overflow lot for Big Cottonwood.

**Little Cottonwood Canyon Park and Ride lot:** 4323 E. Little Cottonwood Canyon Road -- on the north side of the intersection of Little Cottonwood Canyon Road and Quarry Road at the mouth of Little Cottonwood Canyon.

**Utah Travel Council lot:** about 120 E. 300 North -- go east from the intersection of State St. and 300 North and turn south (right) into the first parking lot.

**Parleys Way Kmart lot:** 2705 Parleys Way -- from Parleys Way, turn north into the parking lot; or from Foothill Drive, turn west on Stringham Ave. (2295 South) and then south into the lot.

**WMC Lodge:** Go up Big Cottonwood canyon, (up 7200 S) to Brighton, drive to the back of the BIG parking lot (near the Brighton Manor Motel). Walk up the hill past the boulders, bear left across the stream and up the trail through the trees (100 yards) to the sound of happy people making merry! Wear walking shoes, carry a flashlight for the hike down,

## **WHAT ARE 10Es?**

**The 10 Essentials are: :Map/compass, flashlight, pocketknife, matches/ firestarter, sunscreen/ bugspray, sunglasses, candle, first aid kit ,extra clothes, food and water.**

**JAN 1 SAT SNOWSHOE: ORGANIZER'S CHOICE (NTD).** Join Mary Ann Losee (278-2423) for a kinder, gentler trip into Mill Creek Canyon to help you clear out the effects of New Year's Eve. Bring warm layers, snacks, and your 10 E's. Meet at Skyline High parking lot at 9:00 am.

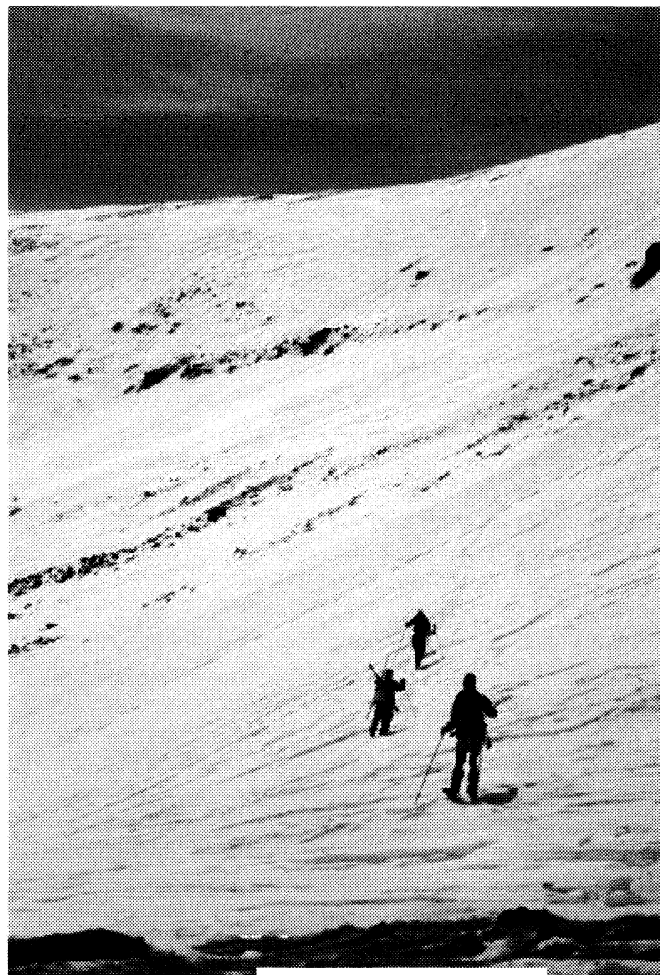
**JAN 1 SAT SNOWSHOE: MID-MORNING 'SHOO (MOD).** Start the new year right! We'll go up to Dog Lake via Mill D and then depending upon snow conditions, plan to go down Butler Fork. This will involve a minor car shuttle. Let your party-weary body sleep until a decent hour of the morning to work off the ill effects of New Year's Eve, then get to Butler Elementary School for a prompt 10:00 am departure for an invigorating New Year's workout. Phone Rick Kirkland (486-0909) if you need more information. Bring your winter safety gear, 10 E's. Beacons advised.

**JAN 2 SUN AUDREY KELLY LEARN TO SKI CLINIC (EL).** This clinic is intended to provide lessons and a learning environment so a student can acquire some basic cross country skiing skills. The plan is to group one instructor per 3 to 4 students. We will practice at the Beaver Creek Trail in the Uintas. To register & discuss equipment/winter clothing & transportation: (or volunteer to teach) call Mike Berry at 583-4721- no later than Wednesday, December 29th.

**JAN 4 TUE SKI BACKCOUNTRY: TUESDAY MORNING BREAKFAST CLUB (MOD+ to MSD).** Moderate to long/hard ski tours, usually but not always in the tri-canyons, with 8 AM starts. Good conditioning, appropriate and dependable gear, snow safety and avalanche search training, and safe winter travel skills are essential. Call or e-mail Chris Proctor for meeting place. (485-1543) (Proctorgtr@aol.com)

**JAN 4 TUE SNOWSHOE: PARK CITY ENVIRONS (MOD-MSD).** Vince DeSimone will lead a "Tuesday Group" again this year at 10:00 am. They go to places in the Park City area where snowshoes are the best means of travel. Expect a normal (healthy) pace with great conversation. For last minute details, join the WMC Snowshoe email list for automatic notices and updates for all Tuesday Snowshoe trips throughout the winter. You will feel welcome and comfortable. Vince prefers cyberspace at [vincedesimone@yahoo.com](mailto:vincedesimone@yahoo.com) or you can call him at 435-649-6805.

**JAN 6 THU SNOWSHOE: THE COTTONWOODS (NTD-**



Heading up to  
Gunsite Pass  
and  
across to the peak

or to suggest a destination, call Clayton or Norm. Meet at the Fort Union Lot #4 (just west of the 'Porcupine' and across the street on the north side of the road) at 9:15 am.

**JAN 6 THU BOATING: PERMIT PARTY.** Party at 6:30 pm at the Mt Olympus Church located at 3280 East and 3900 South. The meeting was previously scheduled for the 11th but has been changed. Stay tuned to your email for details such as chow and drinks. Larry Gwin 435-647-3642 [ljgpenuel@yahoo.com](mailto:ljgpenuel@yahoo.com)

**\*\*\*Participation in any WMC activity can be dangerous. It is your responsibility to evaluate your own preparedness and ability to safely participate in any activity. Please be sure to read and re-read the release forms in the back of this publication, as well as on the sign-up sheets at the beginning of each activity!!!!**

**MOD).** Clayton Rand (897-8911) and Norm Pobanz (266-3703) will lead a "Thursday Group" this year, leaving at 9:30 am. They go to places in the Cottonwood Canyons area where snowshoeing is an adventure. Join the "Over the hill" bunch and expect a pace suitable to all and a destination determined at the time of departure. To confirm the outing (ie. in case on bad weather and possible road restrictions), discuss equipment,

**JAN 8 SAT SKI BACKCOUNTRY: BEARTRAP FORK (NTD+).** This will be a "Ease into the backcountry" event. The terrain will be MOD but the pace will be NTD. Hopefully in December you will be getting your legs and lungs in shape and reminding your body how to telemark by skiing at the resorts or at Alta's "free after 3". Please bring a beacon, shovel, avalanche probe, warm clothes, food for lunch,

water, a 2-way radio of you have one and ski gear in good condition. Expect to be out all day, though it is likely we will be back to the cars by 3:00 pm. You might find a partner to haul you back out of the snow. Meet at Butler Elementary School at 8:45 am for a 9:00 am start. Let's hope for nice weather. More info at [heidi@biochem.utah.edu](mailto:heidi@biochem.utah.edu)

**JAN 8 SAT SKI BACKCOUNTRY: POWDER PARK AREA (MOD).** Join Peter Walton for a backcountry ski at one of the powder parks in Big Cottonwood canyon. Meet at Butler Elementary School at 9:00 am with all your key backcountry equipment (457 kHz beacon, skins, avalanche shovel, food, water, and 10 E's). Call Peter (801) 451-2864 if any questions or to register.

**JAN 8 SAT SKI BACKCOUNTRY: CAN 2 CAN (MOD+).** Tim Bardsley (557-3783). Tri-Canyon area, possibly cross-canyon depending on conditions. Most likely this will be a multi-modal trip using cars, skis and UTA buses. You can expect an early start to catch the bus- bring fare. Must have beacon, shovel, and skins and knowledge of equipment. Plan to spend all day seeking the best turning conditions and terrain. Call Tim to register and find out the meeting time and place.

**JAN 8 SAT SKI BACKCOUNTRY: CARDIAC PASS- DAY'S FORK (MOD+/MSD).** Ski tour for experienced skiers which consists of an ascent from Alta to Cardiff Pass, into Cardiff Fork, then into Day's Fork and out to the Spruces Campground. Plan to meet at the Little Cottonwood Park 'N Ride at 9:00 am, but contact organizer Charles James (733-6700, 209-0725-cell) to register.

**JAN 8 SAT SNOWSHOE: MAYBIRD GULCH (MOD).** Maybird is more a state of mind than a place. It looks different each time, because the trail there is ambiguous. In fact, there is no real trail. It provides a spectacular view of a cirque with the Pfeifferhorn in the background and is one of WMC Snowshoeing veteran Larry Nilsen's (572-3964) favorite destinations. As usual, bring all the essentials, including food, water, and a beacon. Meet Larry at Butler Elementary at 9:00 am.

**JAN 8 SAT SNOWSHOE: RATTLESNAKE GULCH (NTD-TURTLE).** Joan Proctor (474-0275) leads it slow and easy and invites all of you who like a "kinder, gentler hike" to join her. Joan says "well-behaved rabbits welcome, but must be willing to go at a Turtle pace!" As always, be sure to bring snacks, water, and your 10 E's Meet Joan at Skyline High parking lot at 9:00 am.

**JAN 9 SUN SKI TOUR: NORWAY FLATS (UINTAS)(NTD).** Bob promises to turn around before he gets too far. Call Bob Cady (274-0250, [rcady@xmission.com](mailto:rcady@xmission.com)) for information. Carpool rate is .15 per mile per vehicle plus gas. F.S. fee is \$3.00. Meet at the Parleys Way K

Mart at 9:00 am.

**JAN 9 SUN SKI BACKCOUNTRY: HOYT PEAK VIA SWIFTS CANYON (UINTAS)(MOD+/MSD).** Ski the 10,228 foot backdrop for Oakley and Marion at the north end of Kamas Valley. This trip is 14 miles RT and 3,500 foot vertical to the summit. Avalanche beacons/shovels and skins required. Plan to meet at 8:00 am at the Parley's Way K-Mart- but call Steve Pritchett (523-9243) to register. Remember \$5- \$10 per carpooler (0.15 per mile, plus gas div. by occupants).

**JAN 9 SUN SNOWSHOE: SCOTT'S PASS (NTD+).** Join Jim Piani (733-0627) for a tour to the Park City Ski Area Boundary. Meet at Butler Elementary School at 9:00 am with all your key backcountry equipment (Pieps and avalanche shovel, food, water, and 10 E's).

**JAN 9 SUN SNOWSHOE: NEFF'S CANYON TO MEADOW (MOD).** A new tour that covers almost 3 miles and gains about 2,500 feet, Barb Hansen (485-0132) will lead you on one of her favorite trips- to a bowl of jagged limestone cliffs with a great view. Since this is a lower elevation tour, snow conditions may require a change. Bring beacon and shovel if you have them. This tour is in the Mount Olympus Wilderness area, which has a limit on group size (Limit: 10). Above 10, we would need to split out a second group and ask for a volunteer to be an organizer. Arrive early to assure you won't get bumped from the tour. Meet Barb at Skyline High School Parking Lot at the adjusted (later) time of 9:30 am.

## Custom Jewelry Designs



### Martin Jewelers

3243 East 3300 South  
10:00 a.m. to 6:00 p.m.  
Monday thru Saturday  
484-6383

**Between REI and  
PETSMART**

**Jewelry Repair**  
\*\*\*\*\*

**Watch Batteries for  
Most Watches**

**In-Store Goldsmith!**  
\*\*\*\*\*

**Custom Designs in  
Gold and Platinum**  
\*\*\*\*\*

**Bridal Jewelry**  
\*\*\*\*\*

**Pearls**  
\*\*\*\*\*

**Earrings & Pendants**  
\*\*\*\*\*

**Precious Gems**

## Martin Clemans

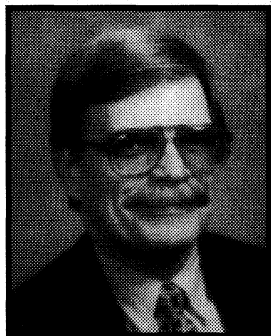
### Mention This Ad For 20% Off



# Thinking of Buying or Selling a Home?

When you are thinking about a move,  
please consider putting your home  
in my expert hands.

**Knick Knickerbocker, GRI**



Email:

knikni@wfrmls.com

Cell: 891-2669

Office: 208-1800

Fax: 208-1802

7050 S. Union Park Ave. #140  
Midvale, UT 84047



**JAN 9 SUN SNOWSHOE: ORGANIZER'S CHOICE ABOVE BOUNTIFUL (MOD+).** Zig Sondelski will be organizing trips during January above Bountiful. Try something different and still be close to home. Explore North Canyon up to Rudy's Flat, then up to Grandview Ridge or down to Mueller Park or City Creek. North Canyon also has a trail that follows the ridge west of City Creek. Northward, Mueller Park has Kenney Creek trail going to Sessions Mountain. Parrish Ridge and Holbrook Ridge also have trails up to the Great Western Trail. Enjoy views from Provo to Ogden, Wendover to Morgan and Park City. Avalanche beacons and the appropriate 10-E's are recommended. Meeting location will depend on the trail, which depends on weather and snow conditions (great when this was submitted). Departure time will be 7:30 AM. Call Zig (292-8332 H, 299-6623 W) for details. ALSO SEE JAN 16, 23 AND 30.

**JAN 10 MON SKI BACKCOUNTRY: DEADLINE FOR FEBRUARY RAMBLER.** For February Rambler, scheduling ski activities for February 12- March 13, 2005. All proposed ski activities must be sent to Steve Pritchett, ski coordinator (spritchett@moxtek.com, 523-9243) BY THIS DATE.

**JAN 10 MON SNOWSHOE: DEADLINE FOR FEBRUARY RAMBLER.** For February Rambler, scheduling snowshoe activities for February 12- March 13 2005. All proposed snowshoe

activities must be sent to Mike Berry (mberry@attglobal.net)(583-4721) BY THIS DATE.

**JAN 11 TUE SKI BACKCOUNTRY: TUESDAY MORNING BREAKFAST CLUB (MOD+ to MSD).** Moderate to long/hard ski tours, usually but not always in the tri-canyons, with 8 AM starts. Good conditioning, appropriate and dependable gear, snow safety and avalanche search training, and safe winter travel skills are essential. Call or e-mail Chris Proctor for meeting place. (485-1543) (Proctorgtr@aol.com)

**JAN 11 TUE SNOWSHOE: PARK CITY ENVIRONS (MOD-MSD).** Vince DeSimone will lead a "Tuesday Group" again this year at 10:00 am. They go to places in the Park City area where snowshoes are the best means of travel. Expect a normal (healthy) pace with great conversation. For last minute details, join the WMC Snowshoe email list for automatic notices and updates for all Tuesday Snowshoe trips throughout the winter. You will feel welcome and comfortable. Vince prefers cyberspace at vinnedesimone@yahoo.com or you can call him at 435-649-6805.

**JAN 13 THU SNOWSHOE: THE COTTONWOODS (NTD-MOD).** Clayton Rand (897-8911) and Norm Pobanz (266-3703) will lead a "Thursday Group" this year, leaving at 9:30 am. They go to places in the Cottonwood Canyons area where snowshoeing is an adventure. Join the "Over the hill" bunch and expect a pace suitable to all and a destination determined at the time of departure. To confirm the outing (ie. in case on bad weather and possible road restrictions), discuss equipment, or to suggest a destination, call Clayton or Norm. Meet at the Fort Union Lot #4 (just west of the 'Porcupine' and across the street on the north side of the road) at 9:15 am.

**JAN 15 SAT SKI BACKCOUNTRY: POWDER PARK AREA (MOD).** Join Peter Walton for a backcountry ski at one of the powder parks in Big Cottonwood canyon. Meet at Butler Elementary School at 9:00 am with all your key backcountry equipment (457 kHz beacon, skins, avalanche shovel, food, water, and 10 E's). Call Peter (801) 451-2864 if any questions or to register.

**JAN 15 SAT SKI BACKCOUNTRY: BCC TO MCC BY UTA (MOD).** Mike Berry (583-4721) is organizing a multi-modal trip from Big Cottonwood Canyon to Mill Creek Canyon descending Little Water trail. Here is the plan: Meet at the Olympus Hills Shopping Center near Einstein's Bagel shop at 7:30 am. Cars will be spotted at the Millcreek Canyon winter gate, then carpools will be formed to go to the mouth of Big Cottonwood Canyon and then catch the UTA bus up to the Mill D trailhead at Spruces Campground. Bring the 10 E's, shovels, transceivers, skins, and one each bus fare of \$2.25. Call Mike for additional information.

**JAN 15 SAT SNOWSHOE: LOWER SILVER FORK (TURTLE)(NTD).** Jim and Bonnie Zinanti (571-1454) want to be very sociable and offered to co-organize a "true NTD"

snowshoe hike today. The pace will be leisurely, allowing time for taking in the mountain scenery. Be sure to bring your 10 E's, snacks, water, extra clothing. Plan on meeting Jim and Bonnie at Butler Elementary School at the adjusted time (later) of 9:30 am.

**JAN 15 SAT SNOWSHOE: DESOLATION LAKE (MOD).** Join Knick Knickerbocker (272-2485) and other 'MOD's' at Butler Elementary at 9 am to carpool. See Larry's January 8th snowshoe listing on what to bring. Call Knick, or an experienced Club snowshoer if you are still unsure.

**JAN 15 SAT SOCIAL:** The 1st Sing-A-Long of 2005 (but it definitely won't be the last!). Come warm up a chilly evening with some "moldy oldies".... that would be the songs, NOT the singers! Bring a potluck munchy to share, BYOB, and come join some warm-hearted (if slightly off key) friends at O'Keefe's abode: 1724 E. Bunkerhill Road (from Murray-Holladay Blvd -- approx. 4750 So. -- turn So. on KingsRow Rd. at 1665 East; 1st street on left is Bunkerhill. Patti's house is 2nd from end on right.) The fun starts at 6:30 pm & goes 'til ????. Questions? Lost?? Call Patti at 424-9215.

**JAN 16 SUN SKI TOUR: PINE VALLEY TOWARDS SOAPSTONE BENCH (UINTAS)(MOD).** Starting from the Pine Valley turn off of the Mirror Lake Highway, we descend to the river, cross it and then find a trail that slowly ascends through the aspens to Soapstone Bench. This tour is only MOD because of length. Meet at the Parley's Way Kmart at 8:00 am. Call Bob Cady (274-0250, rcady@xmission.com) for info.

**JAN 16 SUN SNOWSHOE: ORGANIZER'S CHOICE (NTD).** Norm Pobanz (266-3703) offers a tour in Big Cottonwood Canyon. Meet at Butler Elementary at the adjusted (later) time of 9:30 am.

**JAN 16 SUN SNOWSHOE: CARDIFF FORK (MOD).** Join Nominating Committee Member Brett Smith (580-2066) for a tour and discuss the WMC current state of affairs. Meet Brett at 9:00 am with all your key backcountry equipment (Pieps and avalanche shovel, food, water, and 10 E's).

**JAN 16 SUN SNOWSHOE: LOWER SILVER FORK (NTD-TURTLE).** Nancy Phillips (942-8953) plans to take a leisurely-paced trip. This area is mostly forested and provides protection from the dreaded avalanche. The avalanche rating is 'M' for minimal. Bring snacks and drinks. Meet Nancy at Butler Elementary at the adjusted time (later) of 9:30 am.

**JAN 16 SUN SNOWSHOE: ORGANIZER'S CHOICE ABOVE BOUNTIFUL (MOD+).** Zig Sondelski will be organizing trips during January above Bountiful. Avalanche beacons and the appropriate 10-E's are suggested. Meeting location will depend on the trail, which depends on weather and snow conditions. Departure time will be 7:30 AM. Call Zig (292-8332 H, 299-6623 W) for details. SEE JAN 9 FOR MORE INFO.

**JAN 17 MON SKI TOUR: NORTH FORK PARK OR LIBERTY TO AVON ROAD (NORTHERN WASATCH)(MOD).**

These tours provide access to high plateaus that overlooks the Ogden River Valley to the south and Cache Valley to the north. Michael Berry suggests light metal-edged backcountry skis. Plan to meet at the Utah Travel Council lot (just south of the State Capitol Bldg.) by 7:45 am, but call Mike (583-4721) to register- trip is on with a minimum of 3 skiers.

**JAN 18 TUE SKI BACKCOUNTRY: TUESDAY MORNING BREAKFAST CLUB (MOD+ to MSD).** Moderate to long/hard ski tours, usually but not always in the tri-canyons, with 8 AM starts. Good conditioning, appropriate and dependable gear, snow safety and avalanche search training, and safe winter travel skills are essential. Call or e-mail Chris Proctor for meeting place. (485-1543) (Proctorgtr@aol.com)



**World Wide**  
**Mailing** LLC  
*"The Direct Mail Specialist"*  
Janet Brown  
(801) 973-4057 \* [www.xmission.com](http://www.xmission.com)  
1827 S. Fremont Dr., #B \* Salt Lake City, UT 84104

**JAN 18 TUE SNOWSHOE: PARK CITY ENVIRONS (MOD-MSD).** Vince DeSimone will lead a "Tuesday Group" again this year at 10:00 am. They go to places in the Park City area where snowshoes are the best means of travel. Expect a normal (healthy) pace with great conversation. For last minute details, join the WMC Snowshoe email list for automatic notices and updates for all Tuesday Snowshoe trips throughout the winter. You will feel welcome and comfortable. Vince prefers cyberspace at [vincedesimone@yahoo.com](mailto:vincedesimone@yahoo.com) or you can call him at 435-649-6805.

**JAN 20 THU SNOWSHOE: THE COTTONWOODS (NTD-MOD).** Clayton Rand (897-8911) and Norm Pobanz (266-3703) will lead a "Thursday Group" this year, leaving at 9:30 am. They go to places in the Cottonwood Canyons area where snowshoeing is an adventure. Join the "Over the hill" bunch and expect a pace suitable to all and a destination determined at the time of departure. To confirm the outing (ie. in case on bad weather and possible road restrictions), discuss equipment, or to suggest a destination, call Clayton or Norm. Meet at the Fort Union Lot #4 (just west of the 'Porcupine' and across the street on the north side of the road) at 9:15 am.

**JAN 22 SAT SKI BACKCOUNTRY: ORGANIZER'S CHOICE (MOD).** Karen Perkins (272-2225) leads. Location to be determined based on snow and avalanche conditions. Beacon, shovel, and skins. Also bring the 10 E's. Meet at Butler Elementary School at 9:00 am.

**JAN 22 SAT SKI BACKCOUNTRY: MIDDLE POWDER**

**PARK (MOD).** It's always a great day when you ski the Park of Powder. Larry Larkin (486-9060) is the organizer today if you have any questions. Meet at Butler Elementary at 9:00 am with your snow and avalanche equipment (beacon, shovel, and skins).

**JAN 22 SAT SNOWSHOE: ORGANIZER'S CHOICE (NTD).** Ellie Ienatsch (272-2426) plans a leisurely tour to a beautiful lunch spot. Ellie prefers a call to register. Be sure to bring your 10 E's, snacks, water, extra clothing. Butler Elementary School at the adjusted time (later) of 10:00 am.

**JAN 22 SAT SNOWSHOE: MOUNTAINEERING (MSD+).** Richard Randall invites fit snowshoers to climb Lone Peak from the front side. Bring beacon and ice ax and be prepared for a long day. Call with questions or to register. 553-9090 or email [thegrizz@xmission.com](mailto:thegrizz@xmission.com)

**JAN 22 SAT SOCIAL: ANNUAL AWARDS BANQUET.** The WMC board would like everyone to plan to attend this great event!! Come one, come all to the Jewish Community Center (2 North Medical Drive) at 6:45 PM for cocktails and chat with friends. Dinner will be served at 7:00 followed by awards and then, once again, fun, fast and lively dancing to the Disgusting Brothers, with slow stuff during the breaks. Everything you always wanted and more!! Cost is only \$25.00 and BYOB. Send your money to Jeanine Kuhn@516 12th Ave, SLC,UT 84103 by Jan 14. Questions call Jeanine @ 808-5097 or Julie @ 915-1394.

**JAN 23 SUN SKI BACKCOUNTRY: ORGANIZER'S CHOICE WITH SNOWPACK EVALUATION (MOD+).** Al Soucie (277-0637) leads. Location to be determined based on snow and avalanche conditions. Al will dig several snowpits and share some snowpack stability evaluation knowledge with anyone interested. Beacon, shovel, and skins. Plan to meet at Skyline High East Parking Lot at 8:30 am, but call Al to register (limit to 6).

**JAN 23 SUN SKI TOUR: UPPER SETTING ROAD (UINTAS)(NTD+).** Jerry Hatch (583-8047) has waited for the snow to settle in the Uintas, so it should be prime for touring by now. At a maximum the route can go 12 miles round trip

forest. Meet him at adjusted (later) time of 9:15 am at Butler Elementary School and don't forget to bring your gear and snacks.

**JAN 23 SUN SNOWSHOE: ORGANIZER'S CHOICE (MOD).** Liz Cordova (486-0909). Come prepared for conditions for this brisk outing. Meet at 9:00 am at Butler Elementary School.

**JAN 23 SUN SNOWSHOE (AFTERNOON): ORGANIZER'S CHOICE (NTD).** Robert Turner (355-9617) is planning a pleasant afternoon snowshoe somewhere in Big Cottonwood Canyon, the exact route to be chosen depending on conditions. Meet Robert at 1:00 pm at Butler Elementary with all the usual gear. This outing is co-listed with the Bonneville Bicycle Touring Club.

**JAN 23 SUN SNOWSHOE: ORGANIZER'S CHOICE ABOVE BOUNTIFUL (MOD+).** Zig Sondelski will be organizing trips during January above Bountiful. Avalanche beacons and the appropriate 10-E's are suggested. Meeting location will depend on the trail, which depends on weather and snow conditions. Departure time will be 7:30 AM. Call Zig (292-8332 H, 299-6623 W) for details. SEE JAN 9 FOR MORE INFO.

**JAN 25 TUE SKI BACKCOUNTRY: TUESDAY MORNING BREAKFAST CLUB (MOD+ to MSD).** Moderate to long/hard ski tours, usually but not always in the tri-canyons, with 8 AM starts. Good conditioning, appropriate and dependable gear, snow safety and avalanche search training, and safe winter travel skills are essential. Call or e-mail Chris Proctor for meeting place. (485-1543) ([Proctorgtr@aol.com](mailto:Proctorgtr@aol.com))

**JAN 25 TUE SNOWSHOE: PARK CITY ENVIRONS (MOD-MSD).** Vince DeSimone will lead a "Tuesday Group" again this year at 10:00 am. They go to places in the Park City area where snowshoes are the best means of travel. Expect a normal (healthy) pace with great conversation. For last minute details, join the WMC Snowshoe email list for automatic notices and updates for all Tuesday Snowshoe trips throughout the winter. You will feel welcome and comfortable. Vince prefers cyberspace at [vincedesimone@yahoo.com](mailto:vincedesimone@yahoo.com) or you can call him at 435-649-6805.

**\*\*\*Participation in any WMC activity can be dangerous. It is your responsibility to evaluate your own preparedness and ability to safely participate in any activity. Please be sure to read and re-read the release forms in the back of this publication, as well as on the sign-up sheets at the beginning of each activity!!!!**

and gain 2,300 feet, however, Jerry says he will keep it below a MOD level. Meet Jerry at the K Mart on Parley's Way at 8:45 am. Metal-edged skis would be suitable for this trip. Skins are definitely OK too. Call Jerry or more information or for a Park City meeting place. Carpool rate is .15 per mile per vehicle plus gas. F.S. fee is \$3.00.

**JAN 23 SUN SNOWSHOE: ALBION BASIN (NTD+).** Doug Stark (277-8538) is planning a leisurely tour on the basin road this morning. Doug says this will be an enjoyable and social snowshoe for those of you who like to see the trees from the

**JAN 25 TUE SNOWSHOE OR SKI TOUR: FULL(ISH) MOON (NTD).** Tentative date. Maybe hear the Great Horned, Saw Whet, or Flammulated Owls? Plan for a start time at 9:00 pm. Call Constance Modrow (287-2508 M-F; 971-5034 Weekends) if you want more information.

**JAN 27 THU SNOWSHOE: THE COTTONWOODS (NTD-MOD).** Clayton Rand (897-8911) and Norm Pobanz (266-3703) will lead a "Thursday Group" this year, leaving at 9:30 am. They go to places in the Cottonwood Canyons area where

snowshoeing is an adventure. Join the "Over the hill" bunch and expect a pace suitable to all and a destination determined at the time of departure. To confirm the outing (ie. in case on bad weather and possible road restrictions), discuss equipment, or to suggest a destination, call Clayton or Norm. Meet at the Fort Union Lot #4 (just west of the 'Porcupine' and across the street on the north side of the road) at 9:15 am.

**JAN 28 FRI SKI BACKCOUNTRY: FREE-HEEL FRIDAY**

**\*\*\*Participation in any WMC activity can be dangerous. It is your responsibility to evaluate your own preparedness and ability to safely participate in any activity. Please be sure to read and re-read the release forms in the back of this publication, as well as on the sign-up sheets at the beginning of each activity!!!!**

(MOD+ to MSD). Moderate to long/hard ski tours, usually but not always in the tri-canyons, with 8:30 AM starts. Good conditioning, appropriate and dependable gear, snow safety and avalanche search training, and safe winter travel skills are essential. Call Mike Kligman for meeting place at 578-0534.

**JAN 29 SAT SKI BACKCOUNTRY: SCOTT'S PASS (NTD).** David Rabiger (964-8190) leads this trip of 5 miles round trip and 1500 feet elevation gain. Beacon, shovel, and skins. Also bring the 10 E's. Meet at Butler Elementary School at 9:00 am.

**JAN 29 SAT SKI BACKCOUNTRY: PFEIFFERHORN (SKI-MTN).** Dave Smith (572-0346). Plan to meet at the Little Cottonwood Canyon Park 'N Ride at 7:00 am, but call Dave to register. Bring your 457 kHz beacon, skins, and avalanche shovel (Limit 10).

**JAN 29 SAT SNOWSHOE: DOG LAKE (NTD)(TURTLE).** Join Victoria Saldana for this walk in the woods. Call her at 546-4767 or meet at Butler Elementary School at the adjusted (later) time of 9:30 am.

**JAN 29 SAT SNOWSHOE: ORGANIZER'S CHOICE (MOD).** Join Andrew Beard (955-6280) for a tour. Meet at Butler Elementary School at 9:00 am with your pieps and shovel if you have them.

**JAN 30 SUN SKI BACKCOUNTRY: DESO-POWDER LOOP (MOD).** Ski up Mill D North Fork to Lake Desolation, traverse through the woods up to the ridge then drop down into

the Powder Park drainage on the other side for some low angle turns through the trees. Meet at Butler Elementary School at 10:00 am. Call Bob Cady (274-0250, rcady@xmission.com) for info.

**JAN 30 SUN SKI TOUR: DUTCH HOLLOW (NTD).** This route is between Midway and Heber City in Wasatch Mountain State Park, and may include a dip in a hot spring if accessible. Meet Rebecca Wallace (487-4160) at the Parley's K-Mart Parking Lot at 9:30 am (Limit 10).

**JAN 30 SUN SNOWSHOE: WHITE FIR PASS (NTD).** Join Chris Lyon (435-649-8811) on a route to White Fir Pass this morning. Don't forget to bring food, fluids, and the 10 E's. This tour is in the Mount Olympus Wilderness area, which has a limit on group size (Limit: 10). Above 10, we would need to split out a second group and ask for a volunteer to be an organizer. Arrive early to assure you won't get bumped from the tour. Meet Chris at the Skyline High Parking Lot at 9:00 am.

**JAN 30 SUN SNOWSHOE: NEFF'S CANYON TO MEADOW (MOD).** A new tour that covers almost 3 miles and gains about 2,500 feet, Tom Walsh (487-1336) will lead. For once, the leader does not demand a tribute in chocolate or licorice. Since this is a lower elevation tour, snow conditions may require a change. Bring beacon and shovel if you have them. This tour is in the Mount Olympus Wilderness area, which has a limit on group size (Limit: 10). Above 10, we would need to split out a second group and ask for a volunteer to be an organizer. Arrive early to assure you won't get bumped from the tour. Meet Tom at Skyline High School Parking Lot at 9:00 am.

**JAN 30 SUN SNOWSHOE (AFTERNOON): ORGANIZER'S CHOICE (NTD).** Robert Turner (355-9617) is planning a pleasant afternoon snowshoe somewhere in Big Cottonwood Canyon, the exact route to be chosen depending on conditions. Meet Robert at 1:00 pm at Butler Elementary with all the usual gear. This outing is co-listed with the Bonneville Bicycle Touring Club.



The Highest Man in Utah (for that particular instance in time)



**JAN 30 SUN SNOWSHOE: ORGANIZER'S CHOICE ABOVE BOUNTIFUL (MOD+).** Zig Sondelski will be organizing trips during January above Bountiful. Avalanche beacons and the appropriate 10-E's are suggested. Meeting location will depend on the trail, which depends on weather and snow conditions. Departure time will be 7:30 AM. Call Zig (292-8332 H, 299-6623 W) for details. SEE JAN 9 FOR MORE INFO.

gear, snow safety and avalanche search training, and safe winter travel skills are essential. Call or e-mail Chris Proctor for meeting place. (485-1543) (Proctorgtr@aol.com)

**FEB 1 TUE SNOWSHOE: PARK CITY ENVIRONS (MOD-MSD).** Vince DeSimone will lead a "Tuesday Group" again this year at 10:00 am. They go to places in the Park City area where snowshoes are the best means of travel. Expect a normal

Participation in any WMC activity can be dangerous. It is your responsibility to evaluate your own preparedness and ability to participate in any activity. Please be sure to read and re-read the release forms in the back of this publication, as well as the sign-up sheets at the beginning of each activity!!!!

**FEB or MAR 2005 INTERNATIONAL TRIP: PATAGONIA.** Jaynee Levy (435-637-1049 home, 435-636-3620 work, jarole@sisna.com home, Jaynee\_Levy@blm.gov work) is organizing a February/March 2005 trip to Patagonia which would involve a ten day backpack (with porters) around the Paine Circuit and day hikes in the Fitzroy area, followed by a day trip to see the penguins. The maximum length of the trip would be 23 days plus flying time, but shorter versions are possible. I am organizing this with a local operator to reduce costs and the price is very good. If I get enough people, we can run the trip on our own dates with our own people. If you are interested, please contact Jaynee immediately for details.

**FEB 1 TUE SKI BACKCOUNTRY: TUESDAY MORNING BREAKFAST CLUB (MOD+ to MSD).** Moderate to long/hard ski tours, usually but not always in the tri-canyons, with 8 AM starts. Good conditioning, appropriate and dependable

(healthy) pace with great conversation. For last minute details, join the WMC Snowshoe email list for automatic notices and updates for all Tuesday Snowshoe trips throughout the winter. You will feel welcome and comfortable. Vince prefers cyberspace at [vincedesimone@yahoo.com](mailto:vincedesimone@yahoo.com) or you can call him at 435-649-6805.

**FEB 3 THU -7 MON: Death Valley Bike Ride (MOD).** Escape the icicles and ride in the sun. Leave on Thursday to drive to Furnace Creek. Bike Friday, Saturday and Sunday and return on Monday. As in previous years, we will camp at the Furnace Creek campground. There has been a huge amount of rain in Death Valley recently which has washed out and closed the roads from Death Valley Junction to Furnace Creek, Artist's Loop and Titus Canyon. Non-the-less, there are still plenty of good rides to do and many of the closed roads may be open by the time we go. This year we are going a little earlier due to popular demand, and avoiding Presidents Day Weekend. An organizational meeting will be held on Friday Jan. 21 at Bob



Wright's house, 1832 Meadow Moor Rd. in Salt Lake at 7:00 PM. We will car pool and do group cooking as in past years. Call Bob at 801-274-0756 or Email bobanddenna@msn.com to register.

**FEB 3 THU SNOWSHOE: THE COTTONWOODS (NTD-MOD).** Clayton Rand (897-8911) and Norm Pobanz (266-3703) will lead a "Thursday Group" this year, leaving at 9:30 am. They go to places in the Cottonwood Canyons area where snowshoeing is an adventure. Join the "Over the hill" bunch and expect a pace suitable to all and a destination determined at the time of departure. To confirm the outing (ie. in case on



bad weather and possible road restrictions), discuss equipment, or to suggest a destination, call Clayton or Norm. Meet at the Fort Union Lot #4 (just west of the 'Porcupine' and across the street on the north side of the road) at 9:15 am.

**FEB 5 SAT SNOWSHOE: WASATCH CREST 'RIDGE RUN' (MOD).** In Willow Creek at 7,880 feet, the 10,006 'Silver' mountain will seem 2,126 feet above you, and it is. Ascend the Crest, take in the views, and sweep down into Beartrap Fork with Larry Nilssen (572-3964). As usual, bring all the essentials, including food, water, and a beacon. Meet Larry at Butler Elementary at 9:00 am.

**FEB5SATSNOWSHOE: PIPELINETRAIL(NTD)(TURTLE).** Join Joanne Miller (274-7337) for this walk in the woods. Call her at or meet at Skyline High School Parking Lot at 9:00 am.

**FEB 6 SUN SNOWSHOE: WILLOW LAKE (NTD).** Join Christine Allred (424-0096) for an easy, friendly, slow pace. Bring warm layers, snacks, and your 10 E's. Meet at Butler Elementary School at the adjusted (later) time of 9:30 am.

**FEB 6 SUN SNOWSHOE: WHITE PINE LAKE (MOD).** WMC President Michael Budig (328-4512). Pieps and shovel if conditions warrant. Meet at Butler Elementary School at 9:00 am.

**FEB 6 SUN SOCIAL: 18TH ANNUAL SPAGHETTI DINNER** Vincenzo and Linda DeSimone invite you to an evening of Italian cuisine and fellowship by the fire. Cost \$5 for food and hot drinks (bring other beverages of choice). Time: 6 PM (please no early arrivals). Directions: I-80 to Park City exit Hwy 224 toward Park City, turn left on Meadows Dr. just past the large white barn on the right. Turn left on Mountain Top Lane, go to Mountain Top Drive at the "T" at the top and turn right to the sounds of fun. No pets or children, please. Questions: 435 649 6805 vincedesimone@yahoo.com. RSVP not required.

**FEB 8 TUE SNOWSHOE: PARK CITY ENVIRONS (MOD-MSD).** Vince DeSimone will lead a "Tuesday Group" again this year at 10:00 am. They go to places in the Park City area where snowshoes are the best means of travel. Expect a normal (healthy) pace with great conversation. For last minute details, join the WMC Snowshoe email list for automatic notices and updates for all Tuesday Snowshoe trips throughout the winter. You will feel welcome and comfortable. Vince prefers cyberspace at vincedesimone@yahoo.com or you can call him at 435-649-6805.

**FEB 10 THU SKI BACKCOUNTRY: DEADLINE FOR MARCH RAMBLER.** For March Rambler, scheduling ski activities for March 12- April 17, 2005. All proposed ski activities must be sent to Steve Pritchett, ski coordinator (spritchett@moxtek.com, 523-9243) BY THIS DATE.

**FEB 10 THU SNOWSHOE: DEADLINE FOR MARCH RAMBLER.** For March Rambler, scheduling snowshoe activities for March 12- April 10, 2005. All proposed snowshoe activities must be sent to Mike Berry (mberry@attglobal.net)(583-4721) BY THIS DATE.

**FEB 12 SUN SNOWSHOE: ORGANIZER'S CHOICE (MOD).** Karen Perkins (272-2225) offers a tour in Big Cottonwood Canyon. Meet at Butler Elementary at 9:00 am.

**FEB 15 TUES GENERAL MEMBERSHIP MEETING--ELECTIONS.** Come at 7:00 PM to the Mount Olympus Presbyterian Church @ 3280 E 3900 S. to register your vote for board members for next year. There will be refreshments and

entertainment, so y'all come now!! Questions call Jeanine @ 808-5097.

#### COMING ATTRACTIONS

**MAR 25 SAT SKI BACKCOUNTRY: KING'S PEAK (MSD).** The last Saturday in March is the big event of the ski season. The King's Peak ski tour, hosted for the 29th (or so) year by Steve and Larry Swanson, will convene on Friday night (March 24th) at the Henry's Fork parking area and get underway very early on Saturday morning (See March Rambler for details).

**MAR 27 SAT SNOWSHOE: GOURMET POTLUCK WILLOW LAKE (NTD = FUN!).** The Annual Gourmet Snowshoe. The time to dig out your favorite gourmet recipes as well as your most festive and creative costumes to celebrate the official end of Snowshoe Season and welcome the advent of SPRING! Wine tasting included- bring your reds and whites. Skiers welcome too!

**NOV 2005 NEW ZEALAND EXPLORATION.** We will explore the North and South Islands of New Zealand on this 3 week trip. It will be possible for those wishing a shorter trip to participate as well. A detailed itinerary and November trip dates will be available in January, 2005. We will travel by bus with a guide to highlights of New Zealand. Those wishing to do one of the "treks" will be able to break away. The price is projected to be \$3200 from L.A. Those wishing to be on the reservation list should send a \$300 check made out to Vince Desimone POBox 680111, Park City, UT 84068. The check will not be cashed until you have had a chance to review the details available in January. Refund at no penalty until April 1, 2005. [vincedesimone@yahoo.com](mailto:vincedesimone@yahoo.com) or 435 649 6805.

#### NON-WMC TRIPS

**NOV 6 SAT – MAR 27 SUN SNOWSHOE: SHOW AND GO.** Snowshoers meet each weekend date at Butler Elementary at 9:00 am whenever no other trips are published in the Rambler or listed on the WMC website. These trips are generally at a moderate level, however, join the snowshoe email list for late trip announcements planned by subscribers. NOTE: These trips are not official WMC activities unless approved by the activity director AND published in the WMC Rambler or listed on the WMC website. To subscribe to the snowshoe email list, send an email to: [majordomo@haas.dsl.xmission.com](mailto:majordomo@haas.dsl.xmission.com) with the text (not in the header section): Subscribe wmc-snowshoe.

**NOV 6 SAT – MAR 27 SUN SKI BACKCOUNTRY: SHOW AND GO.** Skiers meet each weekend date at Butler Elementary at 9:00 am whenever no other trips are published in the Rambler or listed on the WMC website. These trips are generally at a moderate level, however, join the ski email list for late trip announcements planned by subscribers. NOTE: These trips are not official WMC activities unless approved by the activity director AND published in the WMC Rambler or listed on the WMC website. To subscribe to the ski email list, send an email to: [majordomo@haas.dsl.xmission.com](mailto:majordomo@haas.dsl.xmission.com) with the text (not in the header section): Subscribe wmc-ski.

**JAN 22 SUN THE WASATCH OVERLAND: ALTA-SNOW-BIRD.** Mark your calendars for a worthwhile event. The latest news is Forest Service sounded optimistic on the Mill D- Dog L.- Mill Creek route, but not for this year- too many steps to get done by Jan. 22. TUNA is proceeding with a route they came up with in negotiations with Alta and Snowbird. The race will start at Alta, then up through Mineral Basin, and end at Snowbird for the post-race party. Bring your tele- or racing skis; and donation for SPLORE! : For more information, call Patricia (278-9541), or check the TUNA web page: [www.utahnordic.com](http://www.utahnordic.com)

**JAN 29 SAT WASATCH WOMEN'S SKI LIKE A GIRL CLINIC: THE CANYONS SKI AREA.** In response to the enthusiastic participation of previous seasons, the Wasatch Telemark Association ([www.wasatchtelemark.org](http://www.wasatchtelemark.org)) is doing it again. There will be full days of clinics, workshops, and apres ski fun at Utah's premier resorts. Contact Laynee (801-231-1160) or Lori (801-424-3961) for more information.

**JAN - MAR 2005 CROSS COUNTRY SKI RACES:** For more up-to-date information, call the TUNA Cross Country Ski Hotline 461-9000 or check the TUNA web page: [www.utahnordic.com](http://www.utahnordic.com)

"Nepal in spring of 2005. If you have never been to Nepal before--or if you have--join Bob Norris and other WMC members for a trekking/climbing adventure in the greatest mountains on Earth in either late April or early May of 2005. Final dates will be determined by persons interested in the trip. It will feature a trek into various areas of the Khumbu valley below Everest and an option to climb 6500 meter Mera Peak. I have been to Nepal many times, always using the services of Iceland Trekking and Expeditions, a Nepali firm owned by Sangge Sherpa, a close personal friend. This connection assures the best possible service and lowest price. If you think you can't afford such an adventure, give me a call or e-mail. I think you will be pleasantly surprised! Contact Bob Norris (801) 943-6039 or [Bobnepal@msn.com](mailto:Bobnepal@msn.com)"

## **REI Presentations for January**

**SANDY - The following presentations are offered free of charge to the public at the Sandy REI, located at 10600 South & 230 West Suite 1700 in the South Towne Mall.**

**INTRODUCTION TO ICE CLIMBING: Thursday, January 13th, 7pm**

REI climbing expert and ice climber of fifteen years Dallen Ward will provide an evening of quality instruction on how to get off the ground and up on the ice. This presentation will include a slide show, explanations of effective techniques, tips on appropriate gear, and prime destinations in the Wasatch and beyond.

**GPS 101: Thursday, January 20th, 7pm.**

Join Taylor Sandstrom as he unveils the mysteries of this fun and fascinating piece of technology. This presentation will cover basic GPS functions such as determining latitude and longitude, programming routes, and recording travel.

**LIGHT, LENS & LANDSCAPE: Thursday, January 27th, 7pm.**

Come out this evening for a slide show of John Telford's magnificent color photographs that evoke the sweep and majesty of the Utah landscape and beyond. John will be showcasing slides from projects over the last ten years interspersed with readings from his published books.

**SALT LAKE CITY - The following presentations are offered free of charge to the public at the SLC REI, located at 3285 East & 3300 South.**

**INTRODUCTION TO ICE CLIMBING: Tuesday, January 11th, 7pm.**

REI climbing expert and ice climber of fifteen years Dallen Ward will provide an evening of quality instruction on how to get off the ground and up on the ice. This presentation will include a slide show, explanations of effective techniques, tips on appropriate gear, and prime destinations in the Wasatch and beyond.

**SKI AND SNOWBOARD TUNE & WAX: Tuesday, January 18th, 7pm.**

Join REI Shop Master Tech Jon Hulse this evening for some expert instruction on base preparation: structure, major and minor repair and stone grinding.

**THE WOMEN OF K2: Thursday, January 20th, 7pm.**

Filmmaker and author Jennifer Jordan has spent years researching the Savage Mountain and now brings us her documentary "Women of K2" after which she will answer questions and sign her recently published book "Savage Summit: The True Stories of the First Five Women Who Climbed K2." At the beginning of the 2004 climbing season, only five women had climbed K2, and all of them were dead. In her film and book Jordan investigates why this mountain has been so brutal to its female climbers, and why these five pioneers all perished while pursuing 8,000 meter peaks.

**LIGHT, LENS & LANDSCAPE: Tuesday, January 25th, 7pm.**

Come out this evening for a slide show of John Telford's magnificent color photographs that evoke the sweep and majesty of the Utah landscape and beyond. John will be showcasing slides from projects over the last ten years interspersed with readings from his published books.



# Please Complete Both Sides

## Wasatch Mountain Club

### New Member Application

(And Reinstatement of Previous Members)

Do Not Use this Form for Regular Annual Membership Renewal

Please read carefully and fill out completely.

Name(s) \_\_\_\_\_

Address \_\_\_\_\_ City \_\_\_\_\_ State \_\_\_\_\_ Zip \_\_\_\_\_

I/we am/are applying for:	Check one:	_____ Single	Birth Date(s) _____
	_____ New Membership	_____ Couple	_____
	_____ Student (Must be 30 years or younger.)	_____	_____
	_____ Reinstatement	_____	_____

Remit: \$40.00 for single membership (\$35.00 dues, plus \$5.00 application fee).  
\$55.00 for couple membership (\$50.00 dues, plus \$5.00 application fee).  
\$25.00 for student membership (\$20.00 dues, plus \$5.00 application fee).

Enclosed is \$ \_\_\_\_\_ for one year's dues and application fee. Checks or money orders only. Make checks payable to: Wasatch Mountain Club.

Do you wish to receive The Rambler (the Club publication)? \_\_\_\_ Yes \_\_\_\_ No  
(Subscription price is NOT deductible from the dues.)

I found out about the WMC from \_\_\_\_\_

Mail application and check to:      Membership Director  
Wasatch Mountain Club  
1390 South 1100 East, Suite 103  
Salt Lake City, UT 84105-2443

Leave Blank – For Office Use Only

Receipt/Check # \_\_\_\_\_ Amount Received \$ \_\_\_\_\_ Date Received \_\_\_\_\_ By \_\_\_\_\_

Board Approval Date \_\_\_\_\_

**WASATCH MOUNTAIN CLUB (WMC)**

**Applicant Agreement, Acknowledgment of Risk, and Release from Liability**

**VOLUNTARY PARTICIPATION:** I acknowledge that my participation in any WMC activity is voluntary. No one is forcing me to participate.

**ASSUMPTION OF RISK:** I am aware that WMC activities involve risks, and could result in injury, illness, death, and damage or loss of property. These dangers include but are not limited to: the hazards of traveling in remote areas without medical services or care, the forces of nature, the inherent dangers involved in participation in sports, wilderness travel, and social activities, and the negligent actions of other persons or agencies. I understand that all activities should be considered exploratory, with the possibility of unexpected conditions and route variations. The WMC is not, nor does it provide, a professional guiding service. In order to partake in the enjoyment and excitement of WMC activities, I am willing to accept the risk and uncertainty involved as being an integral part of the activity. I acknowledge this risk, and assume full responsibility for any and all risks of injury, illness, death, or damage and loss to my property.

**I verify this statement by placing my initials here:** \_\_\_\_\_

**PREPARATION:** I understand that it is my responsibility to evaluate the difficulty of any activity I participate in, and decide whether I am prepared by having the experience, skill, knowledge, equipment, and the physical and emotional stamina to safely participate.

**RELEASE OF LIABILITY AND PROMISE NOT TO SUE:** I agree that I, my heirs, and personal or legal representatives hereby do release and hold harmless from all liability, and promise not to bring any suit or claim against the Wasatch Mountain Club, its leaders, directors, agents or representatives for any injury, illness, death, or damage and loss to property resulting from my participation in any WMC activity even if they negligently caused the injury or damage.

**LEGAL FEES:** Should it become necessary for WMC, or someone on their behalf, to incur attorneys fees and costs to enforce this agreement, I agree to pay WMC reasonable costs and fees thereby expended, or for which liability is incurred.

**INSURANCE:** I certify that I have sufficient insurance to cover any bodily injury or property damage that I may incur while participating in any WMC activity. If I have no such insurance, I certify that I am capable of paying for all such expenses and liabilities.

My signature below indicates I have read this entire document, understand it completely, understand it affects my legal rights, and agree to be bound by its terms. I am at least 18 years old.

Signature: \_\_\_\_\_ Print Name: \_\_\_\_\_

Address: \_\_\_\_\_

Phone: \_\_\_\_\_ Date: \_\_\_\_\_

**WITNESS:** I certify that \_\_\_\_\_ has alleged to me that he/she has read and understands this document.

Witness signature: \_\_\_\_\_ Print Name: \_\_\_\_\_

Address: \_\_\_\_\_

Phone: \_\_\_\_\_ Date: \_\_\_\_\_

Email: \_\_\_\_\_

**MEMBERSHIP APPLICATION Page 2 of 3**

## ACTIVITY SURVEY

<b>Hiking:</b>	<input type="checkbox"/> easy day hike	<input type="checkbox"/> moderate day hike	<input type="checkbox"/> advanced day hike	<input type="checkbox"/> car camp
	<input type="checkbox"/> backpack			
<input type="checkbox"/> sailing	<b>Boating:</b>	<input type="checkbox"/> trip leader	<input type="checkbox"/> instruction	<input type="checkbox"/> equipment
<input type="checkbox"/> out-of-town trip	<b>Skiing:</b>	<input type="checkbox"/> NTD tour	<input type="checkbox"/> MOD tour	<input type="checkbox"/> MSD tour
mountaineering	<b>Climbing:</b>	<input type="checkbox"/> Wasatch climb	<input type="checkbox"/> out-of-town trip	<input type="checkbox"/> winter
	<b>Bicycling:</b>	<input type="checkbox"/> road bike tour	<input type="checkbox"/> mountain bike tour	<input type="checkbox"/> camping tour
	<b>Other outings:</b>	<input type="checkbox"/> snowshoe tour	<input type="checkbox"/> caving	<input type="checkbox"/> other

Conservation:	<input type="checkbox"/> air & water quality issues	<input type="checkbox"/> telephone tree	<input type="checkbox"/> trail clearing	<input type="checkbox"/> trailhead access
	<input type="checkbox"/> wilderness			
Socials:	<input type="checkbox"/> social host	<input type="checkbox"/> party assistance	<input type="checkbox"/> lodge host	
Rambler:	<input type="checkbox"/> word processing	<input type="checkbox"/> mailing	<input type="checkbox"/> advertising	<input type="checkbox"/> computer support
Lodge:	<input type="checkbox"/> general lodge repair	<input type="checkbox"/> skilled lodge work		
Information:	<input type="checkbox"/> public relations	<input type="checkbox"/> membership help	<input type="checkbox"/> recruiting	<input type="checkbox"/> instruction

Is there a special trip or activity that you would like to lead? \_\_\_\_\_

How can we reach you? NAME \_\_\_\_\_  
PHONE: \_\_\_\_\_  
EMAIL: \_\_\_\_\_

Check the Web at  
[www.wasatchmountainclub.org](http://www.wasatchmountainclub.org)

**WASATCH MOUNTAIN CLUB  
1390 SOUTH 1100 EAST  
SALT LAKE CITY, UT 84105**

**PERIODICALS  
POSTAGE PAID  
SALT LAKE CITY,  
UT**