

The Rambler

August 2009

The Monthly Publication of the Wasatch Mountain Club



Volume 88, Number 8
The Wasatch Mountain Club
1390 S. 1100 E. #103
Salt Lake City, UT 84105-2443
(801) 463-9842

200-2010 GOVERNING BOARD

President: John Veranth
(278-5826) veranth@xmission.com

Vice-President:
Kyle Williams (see Adopt-a-Highway)

Secretary: Susan Allen
(466-3292) robertmyers47@gmail.com

Treasurer: Tricia Lee
(274-7643) trisha2king@mac.com

Membership:
Co-director: Marilyn Smith
(273-0369) marilynsmith@msn.com
Co-director: Bob Grant
(273-0369) cincoymaya@msn.com

Biking:
Co-director: Marcia Hansen
(486-5724) hansen5200@msn.com
Co-director: Barb Hanson
(485-0132) barbhanson30@hotmail.com

Boating: Don Urrizaga
435-884-0147 don_urrizaga@yahoo.com

Conservation:
Co-director: Kyle Williams
(652-8110) 1959.kyle@gmail.com
Co-director: Will McCarvill
(942-2921) lizandwill@msn.com

Social Director: Gary Hermanson
(775)901-3008
desotochiropractic@yahoo.com

Hiking:
Co-director: Julie Kilgore
(572-9838) jk@wasatch-environmental.com
Co-director: Alex Rudd
(971-9245) rudd94@gmail.com

Information: Dave Rumbellow
(581-9650) djr3@xmission.com

Lodge:
Director: Bob Myers
(466-3292) robertmyers47@gmail.com
Caretaker: Todd Nerney
caretakerwmc@yahoo.com

Lodge Use:
Dave & Susan Rabiger
(964-8190) drabiger@utah.gov

Mountaineering:
Co-director: Peter Campbell
(733-0313) wmc-alpinist@hotmail.com
Co-director: Clark Richards
(272-5642) cgrichards@aol.com

Publications/E-mail:
Editor: Sonya Lloyd (448-3480)
wasatchmountainclub@gmail.com

Winter Sports: Walt Haas
(534-1262) haas@xmission.com

COORDINATORS:

Adopt-a-Highway: Kyle Williams
(652-8110) 1959.kyle@gmail.com

Boating Equipment: Bret Mathews
(273-0315) bretmaverick999@yahoo.com

Canoeing: Margie Gendler
(712-7890) gendler801@aol.com

Canyoneering: Rick Thompson
gone2moab@hotmail.com

Mountain Bike Coordinator: Brad Yates
(278-2423) bnyslc@earthlink.net

Rambler Mailing: Chris Venizelos
(554-3697)

Trails: Chris Biltorf biltoftc@yahoo.com

Ski, Backcountry: Anne Perry
(860-8060) perryal5@gmail.com

Ski, Touring: Mike Berry
(583-4721) mberryxc@earthlink.net

Snowshoeing: Richard Cherian
(553-7221) richerian@gmail.com

Webmaster: Hardy Sherwood
hs3333@gmail.com

TRUSTEES:
Jerry Hatch 2008-2012
(583-8047) pikahatch@gmail.com
Donn Seeley 2006-2010
(706-0815) donn@xmission.com
Cheryl Soshnik 2007-2011
(435-649-9008) csoshnik@yahoo.com
Steve Duncan 2009-2012
(474-0031) duncste@comcast.net
Trustee Emeritus:
Dale Green (277-6417)

The Rambler (USPS 053-410) is published monthly by the Wasatch Mountain Club. Subscription rates of \$12.00 per year are paid for by membership dues only. Periodicals Postage Paid at Salt Lake City, Utah.

CHANGE OF ADDRESS/Missing Rambler: Please call the WMC office or send your new address to the Membership Director. This publication is not forwarded by the Post Office. Allow 45 days for address changes. Replacement copies are available, while they last, at the WMC office during office hours.

POSTMASTER: Send address changes to: The Rambler, Member-ship Director, 1390 S. 1100 E, #103, Salt Lake City, UT 84105-2443.

COMMERCIAL ADVERTISING:
The Rambler encourages and supports your products and services through pre-paid commercial advertisements. Please send an e-mail to WasatchMountainClub@gmail.com for information or to place an ad. Prepayment is necessary for single month advertisements and invoicing and net 30 for repeat advertisements. Full Page: \$95/month
Half Page: \$50/month
Quarter Page: \$30/month
Business Card: \$15/month

The right is reserved to edit all contributions and advertisements, and to reject those that may harm the sensibilities of WMC members or defame the WMC.

Copyright 2009 Wasatch Mountain Club

Cover Photo:

WMCers survey possible
ski lift on Flagstaff Mtn.
7/11/09

~Photo by Rebecca Wallace

In This Issue:

From the President.....	3
Boating Message	4
Old Timers/New Comers Party	5
WMC Lodge	6
Conservation Message.....	7
Trips & Pics	10, 15-17
Faint Trails: Prince of Wales Mine	12-13
Barometric Pressure Table	14
Activities Listing.....	18
Membership Enrollment.....	37
Non-WMC Activities.....	39

Due to unexpected circumstances (aka "life"), this will be my last term as Publications Director...at least for a while. I will be looking for a volunteer to help out until my term is over (end of January 2010). This involves taking over The Rambler, screening incoming WMC emails, attending Board Meetings, etc. If you're interested, please call me, Sonya Lloyd, at 801-448-3480, or shoot me an email at wasatchmountainclub@gmail.com. It's tons of fun, although it does require lots of time, also, but it's a great volunteer opportunity!!!

FROM THE PRESIDENT

The WMC is a volunteer organization that has been highly successful because people are engaged and care. We have more activity programs than ever, and the offerings continue to evolve as members have more leisure time and flexible work schedules. When I first joined local trips were limited to weekends and Thursday nights. Now, as more members move into retirement and flexible work schedules we have added weekday daytime hikes. This ongoing evolution of club activity schedule offerings strengthens the club.

Changing times also seems to mean we are all becoming more and more busy, and this can lead to both loss of interest in participating in specific activities and volunteer burnout. We have had a decline in the number of mountain bike trips scheduled. We did not have the formal, dress-up dinner and dance format nominations banquet this year because interest in this has been declining. This month the social director had to resign due to work commitments. Board members Cheryl Soshnik, Jerry Hatch, and Phyllis Anderson have stepped up to run the Old Timers /

Newcomers Party, Craig Anderson will run the Halloween Party, and the club officers will run the Leaders' Party. Without a Social Director, or at least volunteers to organize specific events, there will be no other parties this year. Changing communication technology means we now have to maintain our web pages and Facebook group, and there is an opportunity to create a WMC presence on sites like YouTube. Taking advantage of new technology will require volunteers with energy and technical savvy.



Speaking of volunteers, our past president and long-time WMC member Mike Treshow has resigned as club historian. Many thanks to Mike for all his dedicated service to the WMC. Alexis Kelner, a font of institutional memory and avid local history writer has generously agreed to take over this important responsibility.

The level of member services and the types and number of activities on the club schedule depends entirely on the energy of the volunteers who are willing to organize or assist. Do you care? If so, step up and volunteer.

John Veranth, President

WMC Purpose

(Article II of the WMC Constitution)

The purpose shall be to promote the physical and spiritual well-being of its members and others by outdoor activities; to unite the energy, interests and knowledge of students, explorers and lovers of the mountains, deserts and rivers of Utah; to collect and disseminate information regarding the Rocky Mountains on behalf of science, literature and art; to explore and picture the scenic wonders of this and surrounding states; to foster awareness of scenic beauties; and to encourage preservation of our natural areas including their plant, animal and bird life.

I'm Never Too Busy For Any of Your Referrals!

If you know someone that's thinking about a move, please consider referring them to me. I'll take good care of their real estate needs.



Knick Knickerbocker, GRI

Cell: (801) 891-2669

email: Knick.Sold@comcast.net

Remember to call your WMC activity director and volunteer to organize an activity.



1414 E. Murray Holladay Rd.
Salt Lake City
801-278-4414



**World Wide
Mailing LLC**

Janet Brown

Bus. (801) 973-4057 ★ Fax (801) 973-4073
Cell (801) 573-5835 ★ wwm@xmission.com

1827 S. Fremont Dr., #B, Salt Lake City, UT 84104

Boating Message

Don Urrizaga

It's hard to believe, but the season is waning. The Beginner's Trip, the Pre-season Main, the Yampa Service Trip, and the Payette are all behind us. Everyone gear up for the Pink Flamingo Party at Roger's house on the 29th of August (see page 9).

Aug 2 – 9	Class IV	Cataract Canyon	Robert Cady, rcady@xmission.com
Sep 24	Class III+	Rogue	Bruce Beck, bbeck7@gmail.com
Aug 29	Easy	Pink Flamingo	Roger Upwall, 801-466-0219



Orthotic Support

INSOLES



BENEFITS

- Kineti-Flex™ arch support to manage foot fault forces.
- Reinforced metatarsal support for ball of foot comfort.
- Deep, high-walled heel cup to stabilize foot.
- Breathable, anti-wicking material for better foot health.



\$19.95/pr

INSOLE	SIZE USA	SIZE EURO
small	W 6-8.5 / M 7-7.5	35-38
med	W 9-10.5 / M 8-9.5	39-42
large	W 11-12+ / M 10-13	43-46

SHIP TO:

Name _____

Street _____

City _____

State _____

\$5.25/pr shipping in USA.

Orders sales@manakey.com Tel 231 740 9569 Fax 866 447 5974

OLD TIMERS' NEW COMERS' PARTY!!!

When: August 22nd

Where: WMC Lodge @ Brighton Resort

(See page 6 for directions to the lodge or just show up to carpool or follow someone up.)

Time: 6pm (carpool from BCC Park-&-Ride @ 5:15)

Bring: Dish to share and your own beverage (optional item to grill)

Contribution: A day at the Lodge Work Party OR
\$3/member \$5/non-member

Also, WMC members can spend the night at the lodge Friday or Saturday night if you help out Saturday morning at 9am!!!



Whether you're new to the club or have been in for a long time, come enjoy a relaxing evening at the lodge.

If you've never seen the lodge (and many of you haven't), at least take a drive up the canyon and say hello.

It's a great time to slow down, breathe some fresh air, meet people who share common interests, enjoy some laughter, and get away from the hub-bub of city life (not to mention the kids)!

The WMC Lodge

The WMC lodge is tucked away in a grove of evergreens at the top of Big Cottonwood Canyon. It is used for a variety of WMC social functions but can also be rented out for personal use on a full- or half-day basis. Renovation to the lodge included the installation of flushing toilets and a shower. Running water! The two dormitory-style rooms on the second floor provide sleeping accommodations for about 20 people. Go to www.wasatchmountainclub.org/lodge/Lodge_pictures.htm to view pictures of the infamous lodge. The kitchen contains a stove and refrigerator, but—you guessed it—it is not stocked with food, utensils or other culinary items. **All** users of the lodge are expected to clean up the lodge after use. Contact Dave & Susan Rabiger at (801) 964-8190 for reservations.

The Lodge needs constant tender loving care, and WMC members have come to the rescue since 1929. Come donate your carpentry skills or just help clean. Call Bob Myers at (801) 485-9209 or send an e-mail to caretakerwmc@yahoo.com to volunteer. Ask for a list of very specific items that need your attention and the hand tools and equipment needed to get the job done. You need not be a member to volunteer. (Warning: Associating with WMC members and participating in WMC activities can become addictive. Improved health, positive attitudes, and long-lasting friendships are also possible side effects.) We look forward to seeing you at the Lodge!

Please give back and keep your eyes open for upcoming WMC Service Days. The most up-to-date activities are posted on the website (see inside front cover).

Please give back and come help the lodge on the following WMC Service Days. Seeing how there is still a lot of snow in the mountains, at least one of these dates will be filled with shoveling snow off the lodge roof and its surrounding area. Other minor interior and exterior repairs may also occur. If you are physically unable to help out, feel free to bring drinks or treats up to the laborers! Thanks so much in advance for your help!

Single sturdy lodge seeking multiple hard-working hands for great company. Enjoys long days filled with sunshine, sweat, and an occasional deep cleaning.
If interested, contact either Lodge co-director.

Lodge Service Days:

(See right-hand page)

Contact Lodge Director to schedule a service day or see if you can help out!

Contact: Robert Myers, Lodge Director
801-466-3292 (H) 801-381-0575 (C)

Directions to the Lodge

Drive up Big Cottonwood Canyon (7200 S) to Brighton Ski Resort. Drive to back of the BIG parking lot (near the Brighton Manor Motel). Walk up the hill directly behind the motel past the boulders, bearing left across the stream and up the trail through the trees (100 yards). Wear walking shoes and carry a flashlight for the hike down.

WMC Lodge Rental Rates (Day: a 24-hour period)

WMC Members

October 1 - May 31: \$250/day

June 1 - September 30: \$300/day

Weddings and/or Receptions: \$400/day

Non WMC Members

October 1 - May 31: \$350/day

June 1 - September 30: \$400/day

Weddings and/or Receptions: \$550/day



Conservation Notes

Will McCarvill Kyle Williams

Wasatch Canyons Tomorrow open houses are past. These were the kick off for updating the Canyons Master Plan now over 20 years old. A big thank you to WMC members who took the online poll and who helped hand out leaflets at the workshops sponsored by Envision Utah. The Conservation directors (Kyle and Will) cooked up some information for the public, attached below. We felt that the public really needed to get some input as opposed to viewing the questions designed by the sponsors of this process, whose ranks seem to be dominated by the real estate and financial parts of our communities.

Salt Lake County Citizens May Have A Very Small Place In the Wasatch Canyons Of Tomorrow

Do you want the Wasatch covered with ski lifts and service roads on both public and private land (*how about an interconnect*)?

Will it be fair when the spill over from ski areas both summer and winter pushes other Salt Lake citizens into ever smaller areas (*the ski areas won't even have to lease the land*)?

Do you want to have to pay to use your public lands, even if you don't resort ski, heli ski or cat ski (*if you think things are bad now, wait until there are twice as many of us in 20 years*)?

Yes, the ski industry is important to Salt Lake County, but how much of the Wasatch are we willing to give to them (*apparently not enough so far since they always want more*)?

Yes, it's nice to have the tourists pay high prices to be lifted up to ski and mountain bike in our backyard, but where will we be able to go to enjoy nature with friends and family (*the highest peaks that are wilderness are tough to get to*)?

The continued industrialization of our mountains is underway: Alta is discussing putting a lift up Flagstaff Peak north of the ski area. The expressed reason is for avalanche control. The real reason is to expand Alta to make it more competitive in the shrinking ski market. More lifts are sure to follow; they will be on private lands since the ski areas have gotten most of what they want from the Forest Service.

This lift must be stopped; the Wasatch Canyons of Tomorrow cannot be turned over to commercial interests at the expense of citizens of SLC.

Help make the Wasatch Canyons of Tomorrow be the Wasatch Canyons of Today.

Call the Wasatch Mountain Club Conservation Chairs

Will McCarvill 801-942-2921

Kyle Williams 801-652-8110

Yup, we truly believe that the canyons we love to play in are at risk. Unless actions are taken future members of the WMC won't want to hear about the good old days that we let slip away.



WEMT WASATCH EMERGENCY MEDICAL TRAINING



Are you a Wilderness First Responder?

Get the essential training for anyone
who spends time in the outdoors. Be
prepared to offer medical assistance
when you are hours from definitive care

This course is approved by Utah State Parks and Recreation
This is an accepted course for: Guides, Wilderness Therapy
Staff, Boat Crew Permits, and many others!

DATES: June 1-5 on a residential basis

LOCATION: Big Cottonwood Canyon

INCLUDES: Instruction, Texts, Meals, & Lodging

Call Wasatch Emergency Medical Training at
801-360-5183 to reserve your place



WWW.12FINGERADVENTURE.COM
801-360-5183

MARKETPLACE

This space is reserved for those members placing ads
for used and recreational gear or for private and non-
commercial and not-for-profit activities. To submit an
ad, e-mail it to wasatchmountainclub@gmail.com by
the 10th of each month prior to publication. Non WMC
members \$5.00 up to 20 words, \$0.20 per additional word.

* * * * *

Message from Provo Member Kari McMurtrey

I wanted to bring up the concerns with Rock Canyon in Provo to the club.

Go to <http://preserverockcanyon.com/discussion/> for details.

It would be wonderful if members of the WMC that don't usually use Rock canyon were at
least aware of the situation down here & could weigh in to preserve this beautiful canyon.

A.S.A.P. Tree Service

- Stump Removal
- Shrubbery & Bushes
- Tree Removal
- Emergency Service
- Tree Trimming
- Licensed & Insured

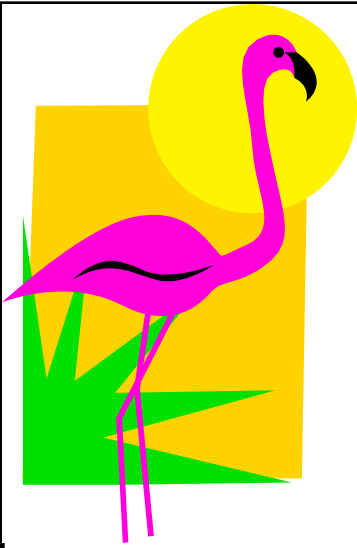
Free Honest Estimates



260-1900



Call For 10% Discount



The Boaters' **Pink Flamingo** Party

When: Saturday 29 August 2009 @ 6:30 p.m.

Where: 3195 South Young Haven Circle (2420 east)
Enter from 2300 East 3225 South

Who: All WMC members are invited

Host: Roger Upwall 801-466-0219

What: Meat (chicken) will be provided. Bring a potluck dinner to share. Bring your own refreshments and a chair. Wear **PINK!** Outrageous costumes are encouraged.

Holly Smith

Insurance Agent

**Representing over 12
Top Rated Companies**



AUTO • HOME • BOATS • BUSINESS • HEALTH • ETC

Call or email me for a competitive no-obligation quote

(801) 683-3931 Holly@JohnHenrySmithInsurance.com

John Henry Smith Insurance

Offices in Bountiful and Salt Lake

WMC Main Salmon Pre-Season 2009

By Don Urrizaga

We loaded up at the boat shed and drove to Corn Creek on the 16th of June. We arrived in the early evening and opted for setting up camp and pitching tents before the rain came, and rigging boats the next morning. The next morning the weather gave us a reprieve long enough to rig boats. Corn Creek was quiet and we pretty much had the boat ramp to ourselves. The river lapped up on the ramp at 5.5. We launched around noon. The reprieve was over and we rowed in a downpour. We wanted Blackadar Hole Camp, but it was reserved. We discussed Motor with the Rangers, but were told it was under water. We contemplated going to Barth Camp, but it was 23 miles. We stopped and scouted Motor. It was half under water, but doable ("a bird in the hand"). So we stayed rather than chance finding the same thing or worse downriver at the next camp. We set up camp, rain canopies and tents, cooked dinner, drank rum, and had a great night.

The next morning there was some confusion whether we were stopping at Bathtub Hot Springs or Barth Hot Springs. We ended up at Barth, which was under water. What wasn't underwater was scalding hot. The weather was nice. We pushed on hoping to get Bargamin Campsite. There were people on the beach at Bargamin, so we eddied out above and sent Rick Thompson in his Fatcat down ahead of us to scout them out. They were hikers from a nearby lodge and Bargamin was vacant. For future reference Barth and Bargamin are both very nice camps. You can scout Bailey Rapid from Bargamin.

Day three dawned with fairly nice weather. It rained on us off and on for the first five days, but not continuously. We ran Bailey straight down the tongue. Bailey at higher flows is usually washed out, but it still offered big fun waves. We played bumper cars, calamitously attempting to eddy out, without an eddy, on river left to scout Big Mallard. There was a group camped at Yellow Pine Bar Camp, on river right, yelling something to Mark McKenzie. He pulled over to find out what they were saying, but then could not get back to river left where we were bouncing along the bank. He had no choice but to power into Big Mallard, and we all followed. What we found out later was the group on the right told Mark "Big Mallard was washed out". I've never seen Big Mallard so tame. Big Mallard was washed out, but little bitty class II Little Mallard was a raging monster. It sent Rick straight up and over and gave us all some excitement. With Bailey, Big Mallard, and Little Mallard out of the way we entered Elkhorn. I've never seen Elkhorn so big. I've never seen the hole behind Elephant Rock so big and powerful. The waves in Elkhorn rivaled anything you'll see in the Grand Canyon. We all made it through. We talked about scouting Whiplash, but didn't. We made it through Whiplash too. We arrived safely at Rhett Creek Camp. I hadn't heard about the fire at Rhett Creek in 07. I was surprised and disheartened to see all the tall ponderosa pines burnt, black, and dead. Rhett Creek is still a beautiful camp.

Day four was fairly routine with stops at Painter Mine and Five Mile Bar. We camped that night at Warren Creek Camp. Warren Creek is a very large, very nice camp. By the time we reached Warren Creek and set up camp we had two down with the flu.

Day five was an easy float with the traditional stop at the Polly Bemis Ranch. The plan for the night was to stay at Maxwell Beach Camp. It is a large beach where "guests" enjoy Frisbee and volleyball. I didn't see no stinkin' beach. We knew we missed Maxwell when we plowed through Dried Meat Rapid. We ended up camping on a sliver of sand called Slide Beach Camp. It was cramped with tents stacked on top of each other and Mark had to sleep with the groover. Once again we had a fun night.

Day six arrived with the anxiety of knowing Chittum awaited us a little less than three miles downriver. When we entered Chittum all of us thought we'd bought the farm. It was huge -- to say the least. It made everything else we'd run look easy. Rick had the cleanest run. Once unencumbered by (separated from) his boat he shot down the tongue and out the other end. Vinegar Rapid was next. It was big. Then came House Rock. It's an enormous rock sitting in the middle of the river. It was completely submerged and creating the biggest hole, competing with Elephant Rock, in the river. We all let down our guard somewhat after Chittum. David Jones thought he'd just casually drift over the pour-over and surf the hole for a while. He washed out of his boat, but managed to climb back in. He lost an oar, but grabbed a spare and kept his boat upright. Two other occupants were washed out and now we had "swimmers". The crew swept into action and pulled them out of the water and to shore. That night we recouped at Spring Bar Campground.

Day seven dawned sunny and beautiful. We de-rigged boats. Heinz from Five Mile Bar in his "triple" picked us up and hauled us back to Corn Creek.

Trip participants: Mark McKenzie, Dave Rumbellow, Rick Thompson, Larry Hall, David Jones, Don Heibel, Cathy Heibel, Paul Smith, Cindy Crass, Chris Robinson, Luke Johnson, Roger Upwall, Leslie Urrizaga, and Don Urrizaga. Special thanks to: Mark McKenzie, Cindy Crass, Chris Robinson, and Luke Johnson.



ROCK CLIMBING SUMMER YOUTH PROGRAMS

PROGRAM FOCUS

MOVEMENT
TECHNIQUE
ROPE WORK

GOALS

LEADERSHIP STRENGTHENING
FRIENDSHIPS
CONFIDENCE BUILDING
FEAR MASTERY
DISCIPLINE

AGE GROUPS

10-12, 13-14, 15+



Four Day Programs



WWW.12FINGERADVENTURE.COM
801-360-5183

*Summit Shot - Lowe Peak (Oquirrh Mtns)
L-R: Fred Schubert, Amanda Meier,
Tamara Aho, Charlie Stoker, Greg
Bronder*

6/27/09

~ Photo by Fred Schubert



FAINT TRAILS IN THE WASATCH

34. Prince of Wales Mine - Part I

Because it is a popular hiking destination the Prince of Wales mine is known to most Wasatch mountain hikers. The boiler, combined with the winch and its coil of rusting cable as well as the menacing vertical shaft, now guarded by a steel framework, give this site a special appeal. However, these mining artifacts scarcely suggest the magnitude of subsurface workings, the wide expanse of past activities above the surface, or the tremendous wealth taken out of the mine through this shaft. Curiously, this historical detritus does not rest at the original location of the Prince of Wales mine, which was some eighty feet down the slope toward the west. The deep shaft seen today is the site of the original Antelope discovery. This was one of the first claims to be filed at the head of Silver Fork in June of 1870. Fifteen men took part in this claim, which gave it considerable length. It extended northeast over the top of the ridge and down into Honeycomb Fork several hundred feet, and in the other direction ran all the way down to the bottom of the east bowl of Silver Fork. The



Fig. 1. Boiler and winch at the Prince of Wales mine in Silver Fork. The framework in the background is a protective cover over the inclined shaft that is at least 700 feet deep. (Wm. Nelsen photo)

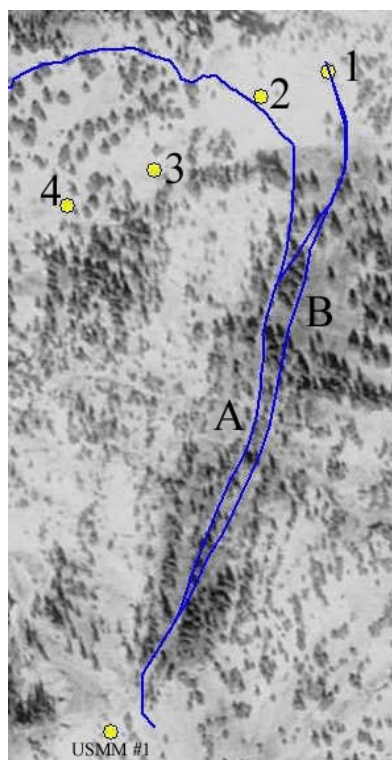


Fig. 2. Roads to the Prince of Wales shaft and tunnel. The dot in the lower left is the location of Mineral Monument No.1, in the pass between Grizzly Gulch and Silver Fork. The other dots are explained in the text.

thing that excited these men was a rather obvious fissure that was surrounded by considerable float; that is, ore that had found its way to the surface. It excited other prospectors as well, and the Antelope was quickly followed by the Wellington, Congress, Prince of Wales, Wandering Boy and Highland Chief Lodes, in that order. All were on the same fissure and overlapped one another. The Wandering Boy discovery was less than a hundred feet from the Antelope; it is the shaft seen today nestled against the cliff a short distance southeast of the boiler. Also, the Prince of Wales claim coincided with the upper part of the Antelope claim. Which one was discovered first is a matter of conjecture; while the Prince of Wales claim was recorded nearly two months after the Antelope, its record included a statement that it was discovered almost a year earlier, in August of 1869. The situation was ripe for legal problems. But initially their close proximity seemed to be of little concern. Most of the miners went to work on their discovery shafts and inclines, or went down the slope a short distance to start tunnels into their claims. Considerable ore was removed that first year.

Access to the claims was by way of trails from a road in Grizzly Gulch. Figure 2 shows these trails from the pass between Silver Fork and Grizzly Gulch to the various mines superimposed upon an aerial photograph. They later became roads and remain as such today. In the figure the dot labeled number 1 is the location of the Prince of Wales boiler, essentially the same

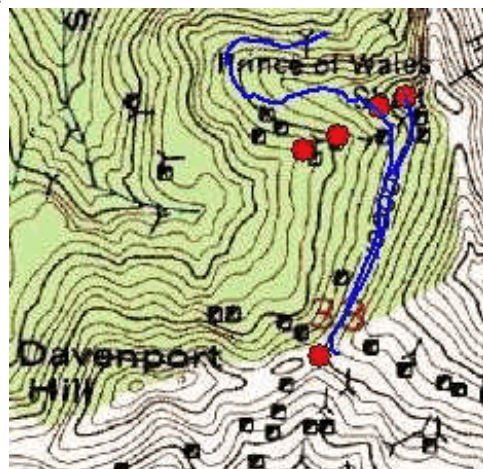


Fig. 3. Roads and location points plotted on a USGS topo map provide additional position reference to the image in Figure 2.



Fig. 4. Junction of the Prince of Wales roads, the one on the right going up to the Prince of Wales mine as we know it today, the one on the left going down past the Prince of Wales tunnel and on down into the Silver Fork bowl.

most shares in the latter claim a few weeks later.

Meanwhile similar activity was going on at the adjacent mines, especially at the Highland Chief, immediately below the Prince of Wales. During the winter, while the Walker Brothers were gaining control of the Antelope and Prince of Wales, three men from New York and Boston were doing the same with the Highland Chief.

When winter lost its grip the following spring, work began in earnest. An ore house was built at the portal of the Prince of Wales tunnel and a boarding house was placed a short distance to the northwest where it was protected from avalanches. Down at the Highland Chief they built a boarding house and a building over the discovery shaft. Both groups had their claims surveyed for patent and received patents in 1872. But their two patents overlapped and both companies were running drifts into that area. The Highland Chief owners filed suit against the Walker Brothers to gain control of the disputed region. It was a litigation that grew bitter, involving suits and countersuits, both in Salt Lake City and Washington, D.C., and dragged on for two years with the final result being the withdrawal of a portion of the Highland Chief patent. The battle might have gone on longer, but at that point the Walkers negotiated a compromise agreement wherein the Highland Chief management transferred its properties to the newly formed Antelope and Prince of Wales Mining Company in exchange for a share in that enterprise. The East Coast group had also gained control of the Wellington mine farther down the slope and started the Boston Tunnel below the Wellington. Both were included in the settlement, giving the Walker Brothers control of all the major workings on the fissure. The development of the Antelope and Prince of Wales mines both before and after the important 1875 event will be discussed in subsequent episodes in this series.

as the Antelope discovery and the Prince of Wales shaft. Number 2 is the location of the Prince of Wales tunnel, its discovery shaft having been on the slope midway between points 1 and 2. Number 3 is the Highland Chief discovery shaft location, while Number 4 is the Highland Chief tunnel site. The track labeled A was the primary route of access; it split with one branch going up to the Antelope, the other going over to the Prince of Wales tunnel and continuing in a westerly direction, which will be discussed in the next Faint Trails episode. Track B was the route of the Prince of Wales tramway which was not built until 1875. Figure 3 shows the same tracks and location points plotted on a segment of the USGS map, providing some location context for the aerial photo.

The value of these claims did not go unnoticed. In October of 1870 the Walker Brothers of Salt Lake City bought a controlling interest in the Prince of Wales mine. Then, recognizing that it and the Antelope covered the same ground, they purchased




Fig. 5. Collapsed Prince of Wales tunnel, located along the lower road below the Prince of Wales boiler site. What appears as a stump or remnants of a tree at lower center is actually cribbing, a retaining wall that held back soil at the portal of the tunnel. The stone wall at the top of the photo supports the flat at the boiler and winch. The discovery incline, halfway up the slope, is no longer visible.

Average Barometric Pressure/Temperatures at Different Altitudes

Altitude (Feet)	Pressure (PSI)	Temperature (°F)	H ₂ O Boiling Point (°F)
-1,000'	15.233	62°	214°
-500'	14.962	60°	213°
0'	14.694	58°	212°
500'	14.431	57°	211°
1,000'	14.171	55°	210°
1,500'	13.916	53°	209°
2,000'	13.664	51°	208°
2,500'	13.416	50°	208°
3,000'	13.172	48°	207°
3,500'	12.931	46°	206°
4,000'	12.693	44°	205°
4,500'	12.460	42°	204°
5,000'	12.230	41°	203°
5,500'	12.003	39°	202°
6,000'	11.779	37°	201°
6,500'	11.560	35°	200°
7,000'	11.343	33°	199°
7,500'	11.130	32°	198°
8,000'	10.920	30°	197°
8,500'	10.713	28°	196°
9,000'	10.509	26°	196°
9,500'	10.308	25°	195°
10,000'	10.111	23°	194°
10,500'	9.917	21°	193°

Altitude (Feet)	Pressure (PSI)	Temperature (°F)	H ₂ O Boiling Point (°F)
11,000'	9.725	19°	192°
11,500'	9.537	17°	191°
12,000'	9.352	16°	190°
12,500'	9.169	14°	189°
13,000'	8.990	12°	188°
13,500'	8.813	10°	187°
14,000'	8.639	9°	186°
14,500'	8.468	7°	185°
15,000'	8.300	5°	184°
16,000'	7.972	1°	182°
17,000'	7.654	-1°	180°
18,000'	7.346	-5°	178°
19,000'	7.049	-8°	176°
20,000'	6.761	-12°	174°
21,000'	6.483	-15°	172°
22,000'	6.214	-19°	170°
23,000'	5.955	-22°	168°
24,000'	5.704	-26°	165°
25,000'	5.462	-30°	163°
26,000'	5.228	-33°	161°
27,000'	5.003	-37°	159°
28,000'	4.785	-40°	157°
29,000'	4.575	-44°	155°
30,000'	4.373	-47°	152°

Source of information: *Interactive Atmosphere Simulator* at <http://www.grc.nasa.gov/WWW/K-12/airplane/atmosi.html>

 = **Death Zone** – greater than 7,500 meters (24,606 feet) – the zone where the human body uses up its store of oxygen faster than it can be replenished.

~ Submitted by Mark Cox

3rd Annual - 2009 Salt Lake Countywide
Watershed Symposium
 ENGAGE • CONNECT • PROTECT

Join the conversation about water quality and the current state of our watershed. Topics include: Jordan River management, habitat restoration, water conservation strategies, collaborative problem solving, funding opportunities, wastewater treatment technologies, climate change, environmental education, and much more!

MAJORS PANEL DISCUSSION WITH MAJORS PETER CORBOON

August 26 & 27
 Utah Cultural Celebration Center
 1333 West 3100 South, West Valley City

Free for everyone!
 Pre-registration by August 14 required
 Free lunch for the first 150 to register!

Contact Lynn Berni
 lberni@slco.org, 801.468.2796

SCHEDULE OF PRESENTATIONS, FIELD TRIPS, ONLINE
waterresources.slco.org

Bringing together water
 quality experts, policy makers,
 environmental advocates,
 and the general public.
 Save the Date!

**August Friends of Alta
 Kickoff Event**
 Details at friendsofalta.org





Please join us for the 3rd Annual Salt Lake Countywide Watershed Symposium on August 26 & 27, 2009, hosted by Salt Lake County! This 2-day event, free for everyone, brings together water quality experts, policy makers, environmental advocates and the general public. Pre-registration is required by August 14, please contact Lynn Berni at lberni@slco.org, (801) 468-2796 (first 150 people to register will receive a free lunch). Visit us online for the information on featured presentations, field trips, etc., <http://www.waterresources.slco.org/html/events/WatershedSymposium09.html>

This picture was taken during a hike up to the Brighton Sister Lakes with Uli as hike leader.

Date: July 3, 2009
 Location: Brighton Lake Mary
 ~ Photo by Pam Belangdal

*It is SO
 WORTH IT to
 hop online
 to see this
 photo with its
 vivid colors!
 Absolutely
 GORGEOUS!!!*



Yampa River Service Trip Report by Gene Dennis

Gene Dennis

On June 26, 2009, WMC members led by Garrish and Dudley met members of the Friends of the Yampa and Dinosaur Botanist Tamara Naumann with several park service personnel and 2 rafts met at the Deer Lodge put in. Our goal was to assist in removing leafy spurge an invasive weed, and tamarisk, also an invasive oriental species with a growing presence in the monument. Our group was selected out of many possible due to actions of Garrish and Dudley, plus the fact that WMC had been very active in preventing the damming of the Yampa years ago. We joined a distinguished group of about 6000 volunteers since the weed warrior program initiated.

We began with a short trip to Anderson Hole, which was fine as it was mostly raining. We were able there to gather several bags of leafy spurge despite the weather. Next day we traveled 23 mi to upper cleos couch campsite, enjoying Tepee Rapid on the way. Here we began a 2 day tamarisk removal. This is a fascinating and difficult project as most were well established with extensive root systems. This was necessary here as the next three miles had been designated a crucial spawning area for several endangered fish species. Seems that the tamarisk cause sand to be retained in the river rock which interferes with the survival of their eggs and fry.

The process of tamarisk removal begins with trimming off all the branches to 8' lengths and stacking them into bus sized piles pointed toward the river and maybe 5' high. This is followed by digging out the base approximately 2 feet to expose the root ball carrot. A chain was then passed around this, going to a $\frac{3}{4}$ to 1 $\frac{1}{2}$ ton chain hoist suspended by three 6' iron legs, with removable foot pads called chimes. We then took turns using all of our strength and weight to pull down on the chain hoist and gradually extract the root from the ground. If it broke we had to dig deeper, reengage, and finish the removal. Afterward, dirt was shoveled back into the hole and the surface raked somewhat. We also had other smaller weed remover tools for smaller tamarisk. The removal tripod tools were the invention and property of the Friends of the Yampa, who have been active for about the last 12 years in removing tamarisk from the river and have made many of these service trips.

After camping here for 2 nights, we moved a mile further down the river removing tamarisk from islands on the way to improve the fish spawning habitat, and camped the next night at lower cleos couch campsite. By this time we were all very tired and ready for a long day on the river to Jones Hole 4, approximately 20 miles, the next day. We scouted Warm Springs Rapid, where we had one swimmer at Surprise, then made our way down to Jones Hole 4. On the way, we stopped at Mitten Park Fault where we were able to observe the Chinese Beetle and larvae at work. After many years of careful study, they were established here as a biologic weapon to help keep tamarisk in check. Turns out that they only eat tamarisk! At Jones 4, we spent 4-5 hours the next morning removing tamarisk, which was more difficult here due to the roots in rocks. Tamara gave us the afternoon off so many of us hiked up Jones Creek and cooled off in the refreshing waters. We returned to camp with more rain and wind and got to secure our tents and rainflys!

The next morning we departed early so we could get thru Island Park without wind, which was a mixed blessing due to hordes of mosquitoes there. We had 3 more swimmers at Moonshine Rapid, which turned out to be the most challenging of the trip! Successfully negotiating the remaining rapids we arrived at the take out about 1:30 pm where we loaded our gear into our van and trailer which the Friends of the Yampa and NPS had shuttled for us.

Our thanks go out to Ranger Tamara Naumann and her helpers, and the Friends of the Yampa for all the hard work they have done over the years; it was a privilege to participate in this program. We learned a lot, including the need for large boats to carry heavy gear and being physically fit enough for the hard rewarding work. Also we were taught about the geology of the monument and surrounding areas and the impact of non native species on the monument. And we gain a huge appreciation for the leadership and courage of NPS Botanist Tamara Naumann in getting the program going and succeeding despite many challenges!

So remember on your next river trip, never hesitate to tie your boat to a tamarisk!!!

Trip Leaders: Dudley McIlhenny and Garrish Willis

Participants: Gene Dennis, Gloria Watson, Carol Milliken, Bob Cady, John Gibson, Chris Chambreau, Carol Petrelli, Connie Blaine, Dave Rabiger and Dave



**YAMPA RIVER SERVICE TRIP
PHOTOS - 6/2009**
~ Photos by Carol Milliken



WASATCH MOUNTAIN CLUB ACTIVITIES

Only activities approved by the appropriate WMC director can be listed in The Rambler. Direct submissions to the Editor are NOT accepted. To submit your activity to the club, login to the WMC website and click on “Volunteer to Organize An Activity”. The appropriate director will approve and/or edit this event for inclusion in both the web calendar and Rambler submissions. The deadline is 6:00 p.m. on the 10th of the month.

Rules and Regulations:

1. **Dogs & Children** are not allowed on WMC activities, except when specifically stated in the activity description.
2. **Car pool rates:** Gas plus \$0.15/mile, shared by everyone in the vehicle (including driver) on 2WD roads, OR gas plus \$0.25/mile on 4WD roads.

Notice to Non-Members: Most WMC activities are open to prospective members except when specifically stated in the activity description.

Find out about unofficial activities on our email lists. Activities formed with these lists are for members only. Lists are to be used only for the scheduling of outdoor activities. Any use of this service for any other purpose, such as advertising, SPAM, jokes, etc, will result in the loss of privilege. To subscribe: Once logging into the website, click on “Email Lists” on the left-hand side. Then follow the online instructions. (Boaters: E-mail the Boat Director—inside front cover—for more information.)

Group size limits in wilderness: Some National Forest ranger districts limit the size of group hiking in wilderness areas. For such hikes, the hike listing will indicate the maximum number of participants (not including the organizer). Please help our organizers on hikes with group size limits by arriving promptly and being understanding if you cannot be accommodated on the hike because of a limit.

Activity Difficulty Rating

0.1-4.0 > Not Too Difficult (NTD)

Lightly Strenuous

4.1-8.0 > Moderate (MOD)

Moderate to Very Strenuous

8.1-11.0 > Most Difficult (MSD)

Very Strenuous, Difficult

11.1+ > Extreme (EXT)

Very Strong, Well-Seasoned Hikers

B > Boulder fields or extensive bushwhacking

E > Elevation change > 5,000 feet

M > Round trip mileage > 15 miles

R > Ridgeline hiking or extensive route finding

S > Scrambling

X > Exposure

W > Wilderness area, limit 14

Be kind. When you carpool up local canyons, please give the driver \$1.50 or \$2.00 to help with gas and the wear and tear on the vehicle.

Directions to Meeting Places

Mill Creek Canyon Park and Ride Lot: Between 3800 S and 3900 S on Wasatch Blvd (3555 E), between the I-215 freeway and Wasatch Blvd along 3900 S. It is on the northwest corner of the intersection. You can ONLY enter it from the west-bound lanes of 3900 S. To get to the Mill Creek Canyon Rd from the Park and Ride lot without making a U-turn, go west (right) on 3900 S, proceed under the freeway, then turn north (right) at the next available street, which is Birch Dr; proceed north to Upland Dr (across from Skyline High School); go east (right) under the freeway and across Wasatch Blvd to the Mill Creek Canyon Rd (3800 S).

Skyline High School: 3251 E 3760 S (Upland Dr). From the intersection of Wasatch Blvd and the Mill Creek Canyon Rd (3800 S), go west under the I-215 freeway, then turn north (right) into the entrance opposite Birch Dr (3330 E).

Butler Elementary: 2700 E just south of 7000 S

Big Cottonwood Canyon Park and Ride Lot: At the northeast corner of the Big Cottonwood Canyon Rd and Wasatch Blvd. at the mouth of Big Cottonwood Canyon.

6200 Park and Ride Lot: 6450 S Wasatch Blvd. Go two lights east and south on 6200 S from the I-215 overpass and turn east (left) onto Wasatch Blvd; the lot is immediately on your left. Sometimes used as an overflow lot for access to Big Cottonwood Canyon.

Ft. Union Lot #4: 200 yards west of Big Cottonwood Canyon Park & Ride, near the Porcupine Pub & Grille (which is located at 3698 Ft. Union Blvd).

Little Cottonwood Canyon Park and Ride Lot: 4323 E Little Cottonwood Canyon Rd. On the north side of the intersection of Little Cottonwood Canyon Rd and Quarry Rd at the mouth of Little Cottonwood Canyon.

Utah Travel Council Parking Lot: About 120 E 300 N. Go east from the intersection of State St and 300 N and turn south (right) into the first parking lot.

Parleys Way K-Mart Parking Lot: 2705 Parleys Way. From Parleys Way, turn north into the parking lot; or from Foothill Drive, turn west on Stringham Ave (2295 S) and then south into the lot.

ACTIVITIES LISTING

See online Calendar for updated and additional events and trips.

2-Day Grand Teton Climb

Julie Kilgore is planning a two-day Grand Teton climb the weekend of August 15th through Exum Mountain Guides. There are several slots open that weekend and I would love some WMC company! If other WMC members would be interested in joining me, send me an e-mail (jk@wasatch-environmental.com). I'll give you the general run-down, the web link for detailed info (including training requirements), and the contact info needed to RSVP. -Julie

Beauty and the Beast Africa Adventure

Sept 15 - 26, 2009

South Africa: Join Salt Lake based Denny Vanden Akker (WMC member and Africa Tour Operator) to scenic Cape Town, South Africa, then on to selected private game reserves where you will find yourself surrounded by wildest Africa yet enveloped in absolute luxury and comfort. Experience the grandeur of Cape Town and its majestic mountains (by road, bicycle, and hiking) including Cape Point, Table Mountain, and the vibrant Waterfront teeming with restaurants, museum, and pristine beaches. Then, on to private game lodges including individual chalets, twice daily (and night) game drives in open-air 4x4s where await the big five and plentiful (elephant, rhino, leopard, lion, cape buffalo), as well as hundreds of various other wild game and birds. From Cape Town to the bush, you will experience the best of what Africa has to offer. For details, contact Denny @ nakker4travel@gmail.com or (801) 277-3368 in Salt Lake City.



Date	Activity
Aug 1 Sat	Day Hike – Brighton Lakes – ntd+ Meet: 9:15 am at 6100 South & Wasatch Park & Ride Organizer: Doug Stark 801 277-8538 Doug will lead this hike at a leisurely pace to check out the wildflowers in the Brighton lakes area.
Aug 1 Sat	Dog Hike – Tom's Choice – ntd Meet: 12:30 am at Skyline High School (3151 E 3760 S) Organizer: Tom Silberstorf 801 255-2784 Tom will select a Millcreek Canyon destination for an afternoon hike. Well mannered dogs and teenagers are welcome.
Aug 1 Sat	Day Hike – Day-bright Loop – mod+ Meet: 9:00 am at Big Cottonwood Canyon Park & Ride Organizer: Steve Duncan 801 474-0031 duncste@comcast.net Up Days Fork and out Silver Lake at Brighton this is a great ridge hike with views of both Big and Little Cottonwood Canyons. We saw at least 10 moose on this hike last year.
Aug 2 Sun	Day Hike – Timpanogos Via Timpooneke – msd – 18.0 mi Meet: 5:00 pm at Registration required Organizer: Carol Masheter 801-466-5729 or 801-493-9114 Join Carol for a trek to Mount Timpanogos, the second-highest summit of the Wasatch Mountains. Carol for an early start and meeting place

Date	Activity
Aug 2 Sun	Day Hike – Summer Ponds Loop – mod <i>Meet:</i> 8:00 am at Big Cottonwood Canyon Park & Ride <i>Organizer:</i> Karen Perkins 801-272-2225 Karen will lead the group up Mill B South [Blanche] and down Mineral. A pretty hike in the summer because of the ponds along this loop.
Aug 2 Sun – Aug 9 Sun	Raft – Cataract – class III – Shuttle <i>Meet:</i> 5:00 pm at Registration required <i>Organizer:</i> Robert Cady 801-274-0250 rcady@xmission.com Cataract Canyon, Aug 2-9. We will be launching from Mineral Bottom on the Green River on Aug 2. We will spend four days floating down to the Confluence, one day running Cataract, then two more days of easy rapids and floating down to Hite where we take off the river. Contact Robert Cady (801/274-0250 or rcady@xmission.com) for more info
Aug 2 Sun	Day Hike – For Beginner And Leisure Hikers – ntd <i>Meet:</i> 9:00 am at 6100 South & Wasatch Park & Ride <i>Organizer:</i> Linda and Don Frady 801 943-1871 lindakosky@msn.com Linda and Don will co-lead this hike geared towards leisure hikers and people new to hiking.
Aug 4 Tue	Evening Mtn Bike – Park City Area – mod <i>Meet:</i> 6:00 pm at announced weekly <i>Carpool:</i> 5:20 pm at Parleys Way former Kmart lot (2703 Parleys Way) <i>Organizer:</i> Vince Desimone 435 649-6805 vincedesimone@yahoo.com Vince Desimone and Nick Calas will be leading the summer Park City area rides. Join the WMC bike email list for each week's meeting location or contact Vince for details.
Aug 4 Tue	Evening Hike – Organizer's Choice, Big Cottonwood Canyon – ntd <i>Meet:</i> 6:15 pm at Big Cottonwood Canyon Park & Ride <i>Organizer:</i> Robert Sweeten 801-278-1007 There will be a prompt 6:30 pm departure.
Aug 5 Wed	Evening Hike – Full Moon Stroll, Little Cottonwood Canyon – ntd <i>Meet:</i> 6:15 pm at Little Cottonwood Canyon Park & Ride <i>Organizer:</i> Mark Bloomenthal 801-842-1242 markbloomenthal@yahoo.com We'll probably be down before the full Moon is up, but it's nice to know it's there. Be ready for a prompt 6:30 pm departure.
Aug 5 Wed	Dog Hike – Mill Creek Canyon <i>Meet:</i> 6:15 pm at Skyline High School (3151 E 3760 S) <i>Organizer:</i> Tom Silberstorf 801-255-2784 Well mannered dogs along with their well mannered owners are welcome. Please bring water for yourself and your four-footed friend and poop bags for your dog. Please bring a leash in case circumstances arise where it is needed. This hike is open to the dog-less as well. The hike will be lead at a turtle pace. There will be a prompt 6:30 pm departure.
Aug 5 Wed	Canoe – Evening Paddle On The Jordan River – flat water <i>Meet:</i> 6:00 pm at To be announced <i>Organizer:</i> Marjorie Gendler 801 712-7890 gendler801@aol.com Unwind after work with an easy float. If you haven't paddled the Jordan before, you are in for a surprise at how delightful it is. We do different sections, so check the website or call on Tuesday to learn the put in location. Call if weather is questionable. Canoes and all kinds of kayaks welcome.

Date	Activity
Aug 6 Thu	<p>Climb – Storm Mountain</p> <p><i>Meet:</i> 6:00 pm at Big Cottonwood Canyon, 2.85 miles up canyon from the neon sign</p> <p><i>Organizer:</i> Vickie Ashby 801 450-7432</p> <p>Come join us for our Thursday evening climbing. Climbers of all ability levels are welcome. If you are new to the sport we have a lot of awesome climbers who are willing to show you the ropes. If you are hardcore we can always use more ropeguns. A climbing harness is necessary and climbing shoes make for a more enjoyable time. Helmets are strongly recommended. There is an annual \$15 climbing fee to cover the cost of rope and anchor gear replacement. Contact the climb leader or Clark Richards (801-272-5642) cgrichards@aol.com or Peter Campbell (733-0313), wmc-alpinist@hotmail.com if you have questions.</p>
Aug 6 Thu	<p>Day Hike – Norm’s Thursday Group – ntd</p> <p><i>Meet:</i> 5:00 pm at Registration required</p> <p><i>Organizer:</i> Norm Pobanz 801-266-3703</p> <p>Join Norm’s Thursday group for a nice weekday adventure. he will pick a location suitable for conditions. Norm plans on exploring some new areas this year so call for meeting time and place details. these trips usually end up in two groups, an NTD and a MOD.</p>
Aug 6 Thu	<p>Evening Hike – Organizer’s Choice, Mill Creek Canyon – ntd</p> <p><i>Meet:</i> 6:15 pm at Skyline High School (3151 E 3760 S)</p> <p><i>Organizer:</i> Mohamed Abdallah 801-466-9310</p> <p>There will be a prompt 6:30 pm departure.</p>
Aug 6 Thu	<p>Dog Hike – K9’s Choice, Mill Creek Canyon – ntd</p> <p><i>Meet:</i> 6:15 pm at Skyline High School (3151 E 3760 S)</p> <p><i>Organizer:</i> Mike Stone 435-647-6327 mwstone@gmail.com</p> <p>Well mannered dogs along with their well mannered owners are welcome. Please bring water for yourself and your four-footed friend and poop bags for your dog. Also, regardless of the leash law and day of the month, please bring a leash in case circumstances arise where it is needed. This hike is open to the dog-less as well. The hike will be lead at a turtle pace. There will be a prompt 6:30 pm departure.</p>
Aug 7 Fri	<p>Road Bike – Coalville To East Canyon Resort – mod – 46.0 mi Out & Back – 1860’ ascent</p> <p><i>Meet:</i> 9:15 am at Coalville Courthouse (50 N Main)</p> <p><i>Carpool:</i> 8:30 am at Parleys Way former Kmart lot (2703 Parleys Way)</p> <p><i>Organizer:</i> Cheryl Soshnik 435 649-9008 csoshnik@yahoo.com</p> <p>This is a lovely ride through rural Summit and Morgan Counties. From Coalville, we bike through Henefer, up and over one hill to East Canyon Resort. Take a break at the resort, then bike home the same route. Friday rides are social - we will begin riding at 9:30 sharp, and regroup several times along the way. Check your email or call before coming up if the weather is bad.</p>
Aug 8 Sat	<p>Trail Maintenance – Millcreek</p> <p><i>Meet:</i> 8:00 am at Skyline High School (3251 E 3760 S)</p> <p><i>Organizer:</i> Chris Biltoft 801-364-5729 biltoftc@yahoo.com</p> <p>We will likely return to the new Red Pine trail in upper Millcreek. Meet at 8:00 am at Skyline High School (3151 E 3760 S). As always, wear long pants and good boots, bring work gloves, water, and a lunch. The Forest Service will provide tools. We will be done by 1:30 - 2 pm. Call Chris Biltoft 801 364 5729, biltoftc@yahoo.com for details.</p>
Aug 8 Sat	<p>Day Hike – Red Pine Lakes – mod – 7.0 mi Out & Back – 2300’ ascent</p> <p><i>Meet:</i> 8:00 am at Little Cottonwood Canyon Park & Ride</p> <p><i>Organizer:</i> Pam Miller 801 381-7942 pmiller@npsstore.com</p> <p>Join Pam for this hike to one or both of the Red Pine lakes.</p>
Aug 8 Sat	<p>Day Hike – Leaders Choice – msd</p> <p><i>Meet:</i> 8:00 am at Little Cottonwood Canyon Park & Ride</p> <p><i>Organizer:</i> Mohamed Abdallah 801 466-9310</p> <p>Mohamed will select a destination appropriate for his condition after a month of travel</p>

Date	Activity
Aug 8 Sat – Aug 10 Mon	Backpack – Ruby Dome – msd – Out & Back <i>Meet:</i> 5:00 pm at Registration required <i>Organizer:</i> Donn Seeley 801 706-0815 donn@xmission.com At 11,387 feet, Ruby Dome is the highest summit in the Ruby Mountains in eastern Nevada. The Rubies are dramatic and rugged, with deep glacial valleys, hundreds of lakes and herds of bighorn and mountain goats. We will pack in to a high camp with water, then go cross-country to the peak, packing out on the last day. The route will be strenuous and exploratory with scrambling on high ridgetops and possible exposure.
Aug 8 Sat	Family Hike – Beginners And Newcomers - Cecret Lake/sugarloaf – ntd+ – 4.0 mi Loop – 1600' ascent <i>Meet:</i> 10:00 am at Little Cottonwood Canyon Park & Ride <i>Organizer:</i> Randy Long 801-733-9367 All hikers are welcome, but this hike is geared toward introducing new people to the Wasatch Mountain Club or those working on their hiking conditioning. There will be at least two leaders on this trip to make sure no one is left behind. This month, Randy will tackle Sugarloaf Peak via cecret lake in albion basin. Others may like to go only as far as the lake. This was one of Randy's first hikes. Children are welcome, adolescents preferred.
Aug 8 Sat	Road Bike – Ulcer Ride – mod – 111.0 mi Loop <i>Meet:</i> 5:00 pm at Registration required <i>Organizer:</i> Marcia Hansen 801 486-5724 hansen5200@msn.com 25th annual ride around Utah Lake sponsored by the Bonneville Cycling club. Route options for 33, 67, or 111 mile rides.
Aug 9 Sun	Dog Hike – Bald Mountain And Bench Lake In The Uintas – mod <i>Meet:</i> 8:30 am at Parleys Way former Kmart lot (2703 Parleys Way) <i>Organizer:</i> Chris Venizelos 801-554-3697 cvenize@xmission.com Join Chris on his annual Uinta Mountain hike. First Bald Mt.(11,943 ft,2.8 RT miles). Then Bench Lake (5 RT miles) in the Weber River Drainage. After hiking, we will get a bite to eat in Kamas or Oakley. Plan to be back in Salt Lake about 6:30 PM. Initial meet at Parleys Way K-Mart, but we can meet others in Park City or Kamas. Well behaved dogs are welcome!
Aug 9 Sun	Hike – Mt Timpanogos – msd <i>Meet:</i> 5:00 pm at Registration required <i>Organizer:</i> Michael Budig 801 328-4512 mbudig@blazemail.com Always spectacular Mt Timpanogos- the best dayhike in the Wasatch. Pre-registration required- please contact trip organizer Michael Budig by email
Aug 9 Sun	Hike – Artist's Hike – ntd <i>Meet:</i> 8:30 am at Skyline High School (3251 E 3760 S) <i>Organizer:</i> jalene myrup 801 583-1678 hike to a nice place near the top of millcreek canyon. use watercolors, pastels, camera, clay, pencil and pad to create your masterpiece. bring a light lunch and the 10 E's. plan on returning around 12 Or 1 p.m.
Aug 9 Sun	Day Hike – Bear Trap To Desolation Lake Overlook – mod – 4.0 mi Out & Back – 2000' ascent <i>Meet:</i> 9:30 am at Big Cottonwood Canyon Park & Ride <i>Organizer:</i> Tom Silberstorf 801 255-2784 Tom will lead this Big Cottonwood Canyon hike at a relaxed pace hike.
Aug 11 Tue	Evening Mtn Bike – Park City Area – mod <i>Meet:</i> 6:00 pm at announced weekly <i>Carpool:</i> 5:20 pm at Parleys Way former Kmart lot (2703 Parleys Way) <i>Organizer:</i> Vince Desimone 435 649-6805 vinedesimone@yahoo.com Vince Desimone and Nick Calas will be leading the summer Park City area rides. Join the WMC bike email list for each week's meeting location or contact Vince for details.

Date	Activity
Aug 11 Tue	Evening Hike – Organizer’s Choice, Little Cottonwood Canyon – ntd <i>Meet:</i> 6:15 pm at Little Cottonwood Canyon Park & Ride <i>Organizer:</i> Dahna Chaitanya and Anne Polinsky 801-261-1522 or 801-466-3806 There will be a prompt 6:30 pm departure.
Aug 12 Wed	Canoe – Evening Paddle On The Jordan River – flat water <i>Meet:</i> 6:00 pm at To be announced <i>Organizer:</i> Marjorie Gendler 801 712-7890 gendler801@aol.com Unwind after work with an easy float. If you haven’t paddled the Jordan before, you are in for a surprise at how delightful it is. We do different sections, so check the website or call on Tuesday to learn the put in location. Call if weather is questionable. Canoes and all kinds of kayaks welcome.
Aug 12 Wed	Evening Hike – Organizer’s Choice, Mill Creek Canyon – ntd <i>Meet:</i> 6:15 pm at Skyline High School (3151 E 3760 S) <i>Organizer:</i> Steve Carr 801-261-5787 There will be a prompt 6:30 pm departure.
Aug 13 Thu	Climb – Geezer Wall (new Crag) <i>Meet:</i> 6:00 pm at Challenge Buttress Parking area 2.8 miles from neon sign Big Cottonwood Canyon. Geezer Wall is apprx. 600 yds. up gulch from Steort’s Ridge on the left. <i>Organizer:</i> Mark and Louise Sargent 801 467-6513 Come join us for our Thursday evening climbing. Climbers of all ability levels are welcome. If you are new to the sport we have a lot of awesome climbers who are willing to show you the ropes. If you are hardcore we can always use more ropeguns. A climbing harness is necessary and climbing shoes make for a more enjoyable time. Helmets are strongly recommended. There is an annual \$15 climbing fee to cover the cost of rope and anchor gear replacement. Contact Mark Sargent at 801-467-6513 or Clark Richards (801-554-9862) cgrichards@aol.com or Peter Campbell (733-0313), wmc-alpinist@hotmail.com if you have questions. Climb leader will leave parking area at 6:00 p.m sharp.
Aug 13 Thu	Day Hike – Norm’s Thursday Group – ntd <i>Meet:</i> 5:00 pm at Registration required <i>Organizer:</i> Norm Pobanz 801 266 3703 Join Norm’s Thursday group for a nice weekday adventure. he will pick a location suitable for conditions. Norm plans on exploring some new areas this year so call for meeting time and place details. these trips usually end up in two groups, an NTD and a MOD.
Aug 13 Thu	Evening Hike – Organizer’s Choice, Big Cottonwood Canyon – ntd <i>Meet:</i> 6:15 pm at Big Cottonwood Canyon Park & Ride <i>Organizer:</i> Heidi DeMartis 801-942-8088 There will be a prompt 6:30 pm departure.
Aug 13 Thu	Dog Hike – K9’s Choice, Mill Creek Canyon – ntd <i>Meet:</i> 6:15 pm at Skyline High School (3151 E 3760 S) <i>Organizer:</i> Jean Acheson 801-633-5225 jeanacheson@comcast.net Well mannered dogs along with their well mannered owners are welcome. Please bring water for yourself and your four-footed friend and poop bags for your dog. Also, regardless of the leash law and day of the month, please bring a leash in case circumstances arise where it is needed. This hike is open to the dog-less as well. The hike will be lead at a turtle pace. There will be a prompt 6:30 pm departure.

BE PREPARED! ALWAYS TAKE THE 10 E’s AND CHECK THE LOCAL WEATHER CONDITIONS! WHAT ARE THE 10 E’s? MAP/COMPASS, FLASHLIGHT, POCKETKNIFE, MATCHES/FIRE-STARTER, SUNSCREEN/BUG SPRAY, SUNGLASSES, CANDLE, FIRST AID KIT, EXTRA CLOTHES, & FOOD AND WATER

Date	Activity
Aug 14 Fri	Road Bike – Kamas To Wolf Creek Pass – mod+ – 45.0 mi Out & Back – 3000' ascent <i>Meet:</i> 9:15 am at Kamas City Park (1st North and 1st East) <i>Carpool:</i> 8:30 am at Parleys Way former Kmart lot (2703 Parleys Way) <i>Organizer:</i> Cheryl Soshnik 435 649-9008 csoshnik@yahoo.com Lets' climb 3,000' today, from Kamas to the 9,500' Wolf Creek Pass in scenic rural Summit County. Climb at your own pace today, we'll relax the regrouping rule from our usual Friday rides. We'll begin riding at 9:30 sharp. Go as fast or as slow as you want, just have fun! Call or check your email before coming up, if the weather looks bad.
Aug 15 Sat – Aug 21 Fri	Hike – Yellowstone/absaroka Loop – mod+ <i>Meet:</i> Registration Required <i>Organizer:</i> Michael Budig 801 328-4512 mbudig@blazemail.com Moderately Strenuous backpack- about 40 miles (with about 3000 feet of elevation gain)- up Slough Creek in the Northeast corner of Yellowstone National Park and into The Absaroka Mountains in Gallatin National Forest. The loop concludes with a hike down the Buffalo Plateau Trail back to the starting point with an optional dayhike up Lookout Mtn. Leave town on Friday, August 14 to start hiking of the following day and finish on Friday, August 21, 2009. Contact trip organizer Michael Budig by email to register or ask questions.
Aug 15 Sat – Aug 22 Sat	Backpack – Hiking And Fishing The Wind River Range – mod+ <i>Meet:</i> 5:00 pm at Registration required <i>Organizer:</i> Kevin Earl 801 568-3791 kbe44@hotmail.com Fishing optional. We will make a loop trip between the Boulder Lake and Scab Creek trail heads. We will be hiking to many lakes to enjoy the scenery and fishing. The Wind River lakes offer fantastic fishing for Cutthroat and Brook trout. We will drive up Friday afternoon, though some might like to drive up very early Saturday morning. We will hike in on Saturday, and hike out the following Saturday. We will camp at four different lakes (Christina, Valley, Bob's, and Little Divide) and do some day hikes from the camps to lakes like the Europe Lakes, Halls Lake, and Middle Fork Lake. Some lakes require off-trail hiking. Call or e-mail with questions or to register.
Aug 15 Sat	Day Hike – Thunders, Bighorn And Lone Peak From Coalpit – ext – Shuttle <i>Meet:</i> 5:00 pm at Disseminated via the Hike email list <i>Organizer:</i> Matthew VanHorn 801 272-5824 hatmanvorn@hotmail.com Hit all four major peaks circling above Bells Canyon: North Thunder, South Thunder, Bighorn (Upper Bells) and end with Lone Peak, via Coalpit Gulch. This is a long, difficult day beginning with the gaining of 5,000' el. just to summit North Thunder.
Aug 15 Sat	Day Hike – Maybird Lakes – mod <i>Meet:</i> 10:00 am at Little Cottonwood Canyon Park & Ride <i>Organizer:</i> Tom Silberstorf 801 255-2784 Join Tom on this great hike to the beautiful maybird lakes nestled under the pfeifferhorn.
Aug 15 Sat – Aug 16 Sun	Climb – Ruth Lake Uinta Mountains – ntd – 1.0 mi Out & Back <i>Meet:</i> 5:00 pm at Registration required <i>Organizer:</i> Ezra Nuttall 801-440-9192 enuttall@interwestconst.com Ruth Lake is a beautiful climbing area 1 mile from the parking area near Mirror Lake. There are 30+ climbs ranging from 5.5--5.12. We will be backpacking in and spending the weekend at the Lake. Bring your own gear, food and partner. Temps at night drop to the 30's so bring warm stuff. Contact Ezra Nuttall to register 801-440-9192.
Aug 15 Sat	Day Hike – Dog Lake – ntd <i>Meet:</i> 8:30 am at 6100 South & Wasatch Park & Ride <i>Organizer:</i> Rose Novak 801-487-6034 Rose likes this hike on a hot summer day because the route is mostly in the shade.

Date	Activity
Aug 15 Sat	Day Hike – Organizers Choice – msd <i>Meet:</i> 8:00 am at To Be Determined <i>Organizer:</i> Chuck James 801 209-0725 jamesgang1971@comcast.net Chuck will select a challenging and interesting route for strong hikers.
Aug 15 Sat	Day Hike – Neffs Canyon For Photographs And Conversation – ntd <i>Meet:</i> 9:00 am at Skyline High School (3151 E 3760 S) <i>Organizer:</i> Scott Hadden 801-448-8101 scott@sghphotography.com Scott will lead this photography hike up Neff's Canyon. Bring a swimsuit for an optional cool-down swim at Scott's home which is located about 100 yards from the Neff's trailhead.
Aug 15 Sat	Day Hike – Pfeiffer Horn – msd – 10.0 mi Out & Back – 3700' ascent <i>Meet:</i> 7:00 am at Little Cottonwood Canyon Park & Ride <i>Organizer:</i> Charles James 801 209-0725 jamesgang1971@comcast.net Come join us on a leisurely hike at a moderate pace up one of the Wasatch's tallest peaks. Call Chuck if you have any questions @ 801.209.0725
Aug 16 Sun	Day Hike – Lone Peak – msd – 13.0 mi Out & Back – 5700' ascent <i>Meet:</i> 5:00 pm at Registration required <i>Organizer:</i> Donn Seeley 801 706-0815 donn@xmission.com We'll beat the summer heat with an early start. Call for details. Limit: 9.
Aug 16 Sun	Day Hike – Weber County - Organizer's Choice – mod <i>Meet:</i> 8:45 am at Utah Travel Council Lot (110 E 300 N) <i>Organizer:</i> Jerry Hatch 801-583-8047 Join Jerry for a great hike somewhere north of the usual area's. contact him near the activity date for details or just show up for a pleasant surprise.
Aug 16 Sun	Day Hike – Catherine's Pass Via Albion Basin – ntd <i>Meet:</i> 9:00 am at Little Cottonwood Canyon Park & Ride <i>Organizer:</i> Christine Schnitzer 321 223-1580 christinerose1@aol.com join Christine on this true gem of a hike through one of the best wildflower areas around.
Aug 16 Sun	Day Hike – Mineral Frk To Lk Blanche Via Regulator Johnson – mod+ – 11.0 mi Shuttle – 3600' ascent <i>Meet:</i> 8:00 am at Big Cottonwood Canyon Park & Ride <i>Organizer:</i> Knick Knickerbocker 801 272-2485 Knick.Sold@comcast.net Join Knick Knickerbocker (272-2485) for a pleasant MOD+ (MSD-) hike in Big Cottonwood Canyon. Knick plans a moderate paced hike from Mineral Fork to Regulator Johnson Mine and then descending into and out the Lake Blanche trail. Some exposure at ridge and into west drainage. Elevation gain 3600 with loss of 4000 ft. Come prepared with your 10-E's. Meet Knick at Big Cottonwood Park and Ride by 8:00 am to car pool.
Aug 18 Tue	Evening Mtn Bike – Park City Area – mod <i>Meet:</i> 6:00 pm at announced weekly <i>Carpool:</i> 5:20 pm at Parleys Way former Kmart lot (2703 Parleys Way) <i>Organizer:</i> Vince Desimone 435 649-6805 vincedesimone@yahoo.com Vince Desimone and Nick Calas will be leading the summer Park City area rides. Join the WMC bike email list for each week's meeting location or contact Vince for details.
Aug 18 Tue	Evening Hike – Red Pine Lake Trail – ntd <i>Meet:</i> 6:00 pm at Little Cottonwood Canyon Park & Ride <i>Organizer:</i> Michelle Butz 801-842-9646 Please note the change of meeting time. There will be a prompt 6:15 pm departure.

Date	Activity
Aug 19 Wed	Canoe – Evening Paddle On The Jordan River – flat water <i>Meet:</i> 6:00 pm at To be announced <i>Organizer:</i> Marjorie Gendler 801 712-7890 gendler801@aol.com Unwind after work with an easy float. If you haven't paddled the Jordan before, you are in for a surprise at how delightful it is. We do different sections, so check the website or call on Tuesday to learn the put in location. Call if weather is questionable. Canoes and all kinds of kayaks welcome.
Aug 19 Wed	Evening Hike – Organizer's Choice, Big Cottonwood Canyon – ntd <i>Meet:</i> 6:00 pm at Big Cottonwood Canyon Park & Ride <i>Organizer:</i> Tom Mitko 801 277-7588 Please note the change of meeting time. There will be a prompt 6:15 pm departure.
Aug 19 Wed	Day Hike – K9's Choice, Mill Creek Canyon – ntd <i>Meet:</i> 6:00 pm at Skyline High School (3151 E 3760 S) <i>Organizer:</i> Tom Silberstorf 801-255-2784 Well mannered dogs along with their well mannered owners are welcome. Please bring water for yourself and your four-footed friend and poop bags for your dog. Please bring a leash in case circumstances arise where it is needed. This hike is open to the dog-less as well. The hike will be lead at a turtle pace. There will be a prompt 6:15 pm departure.
Aug 20 Thu	Climb – Challenge Buttress Area <i>Meet:</i> 6:00 pm at Big Cottonwood Canyon, 2.85 miles upcanyon from the neon sign <i>Organizer:</i> Peter Campbell 801 733-0313 wmc-alpinist@hotmail.com Come join us for our Thursday evening climbing. Climbers of all ability levels are welcome. If you are new to the sport we have a lot of awesome climbers who are willing to show you the ropes. If you are hardcore we can always use more ropeguns. A climbing harness is necessary and climbing shoes make for a more enjoyable time. Helmets are strongly recommended. There is an annual \$15 climbing fee to cover the cost of rope and anchor gear replacement. Contact the climb leader or Clark Richards (801-272-5642) cgrichards@aol.com or Peter Campbell (733-0313), wmc-alpinist@hotmail.com if you have questions.
Aug 20 Thu	Day Hike – Norm's Thursday Group – ntd <i>Meet:</i> 5:00 pm at Registration required <i>Organizer:</i> Norm Pobanz 801 266 3703 Join Norm's Thursday group for a nice weekday adventure. he will pick a location suitable for conditions. Norm plans on exploring some new areas this year so call for meeting time and place details. these trips usually end up in two groups, an NTD and a MOD.
Aug 20 Thu	Evening Hike – Organizer's Choice, Mill Creek Canyon – ntd <i>Meet:</i> 6:00 pm at Skyline High School (3151 E 3760 S) <i>Organizer:</i> Mary Losee Yates 801 278-2423 Please note the change of meeting time. There will be a prompt 6:15 pm departure.
Aug 20 Thu	Dog Hike – K9's Choice, Mill Creek Canyon <i>Meet:</i> 6:00 pm at Skyline High School (3151 E 3760 S) <i>Organizer:</i> Mike Stone 435-647-6327 mwstone@gmail.com Well mannered dogs along with their well mannered owners are welcome. Please bring water for yourself and your four-footed friend and poop bags for your dog. Also, regardless of the leash law and day of the month, please bring a leash in case circumstances arise where it is needed. This hike is open to the dog-less as well. The hike will be lead at a turtle pace. There will be a prompt 6:15 pm departure.

Date	Activity
Aug 21 Fri	Road Bike – The Seven Hills Of Park City – msd- – 35.0 mi Loop – 5000’ ascent <i>Meet:</i> 9:15 am at Park City Library (1255 Park Ave) <i>Carpool:</i> 8:45 am at Parleys Way former Kmart lot (2703 Parleys Way) <i>Organizer:</i> Cheryl Soshnik 435 649-9008 csoshnik@yahoo.com Here it is, we’ve been building up to this ride...lots of climbing all around Park City. Seven hills, as a matter of fact. Some short, some tall, this ride has it all. What’s nice is that we are never too far from the center of town after each hill, so you can do as many or as few of the hills as you want. We’ll start at 9:30 sharp, but we’ll stop at the top of each hill to regroup, so don’t be afraid of coming out to join us. If you’ve ever ridden with me, you know I’m the slowest climber in the world (but I just keep on chugging...) Check your email or call before coming up if the weather looks bad.
Aug 22 Sat	Lodge Work Party – August Maintenance – ntd <i>Meet:</i> 9:15 am at WMC Lodge <i>Carpool:</i> 8:30 am at Cottonwood Park & Ride at 6200 S. & Wasdatch Blvd. <i>Organizer:</i> Robert Myers 801 466-3292 robertmyers47@gmail.com Summer work party to continue the work on the summer projects. Possible some routine housekeeping and cleanup. Work for everyone, lunch provided; just bring work gloves, work clothes and sunscreen. Temperature will be lower at Brighton so dress for the occasion. The lodge will be open for an overnight stay either Friday or Saturday night, call to arrange. For more information, call Robert at either (H)801-466-3292 or 801-651-9965 for more information.
Aug 22 Sat	Hike – Hogum Divide – mod+ <i>Meet:</i> 8:00 am at Little Cottonwood Canyon Park & Ride <i>Organizer:</i> Julie Kilgore 801 572-9838 jk@wasatch-environmental.com Hike to Maybird Lakes, then “rock dance” up the boulders to the Divide for an incredible view of Thunder Ridge. Test your feel for a little exposure as we work our way a short distance along the Hogum ridge before dropping back down to Maybird.
Aug 22 Sat	Day Hike – Wheeler Creek Trail In Ogden Canyon – ntd – 12.0 mi <i>Meet:</i> 5:00 pm at Registration required <i>Organizer:</i> Mark Balboni 801 708 3976 Mark.Balboni@parexel.com Join Mark for this hike in Weber County. This hike starts at the base of Pineview Reservoir dam and goes up Wheeler Canyon to the Snowbasin parking lot. A good portion of the trail is covered but it will be plenty warm, so bring lots of water and your lunch. This will be a full day (6 or 7 hours). meeting time will be 9 am.
Aug 22 Sat – Aug 23 Sun	Road Bike – Weekend Epic #3: Mirror Lake Loop – mod+ – 117.0 mi Loop – 5170’ ascent <i>Meet:</i> 5:00 pm at Registration required <i>Organizer:</i> Robert Turner 801-467-1129 r46turner@sisna.com This will be a supported overnight loop trip. Saturday, we’ll ride from Wanship via Chalk Creek to a campground on the Mirror Lake Highway. In camp, we’ll enjoy sun-showers and a Dutch oven dinner. Sunday we’ll ride over Hayden and Bald Mountain passes, then down, down, down to Kamas and back to Wanship. Now I just have to figure out how to get us over the 7 ½ miles of loose dirt road we had to ride on Saturday last year. Anyone want to drive SAG? Call Robert for more details and to register.
Aug 22 Sat – Aug 23 Sun	Car Camp – La Sal Mountains – mod <i>Meet:</i> 5:00 pm at Registration required <i>Organizer:</i> Jerry or Donn 801 583-8047 or 801-706-0815 View the magnificent Moab desert country from some of the tallest mountains in Utah. Another meticulously directed Donn Seeley car camp (with Jerry Hatch as co-organizer).
Aug 22 Sat	Family Hike – Stewart Falls On Timpanogos - Good For Beginners – ntd – 2.0 mi <i>Meet:</i> 10:00 am at 90th south trax park n ride lot <i>Organizer:</i> Randy Long 801-733-9367 this is a very enjoyable hike to a big waterfall on the beautiful and famous mt. timpanogos. rememeber some extra money for the american fork canyon access fee.

Date	Activity
Aug 22 Sat	<p>Party – Oldtimers - Newcomers Bbq And Social</p> <p><i>Meet:</i> 6:00 pm at WMC Lodge above Brighton</p> <p><i>Organizer:</i> Phyllis Anderson 801 733 4806 paisnow@comcast.net</p> <p>I'm back from DC, and I want to see all my old friends and meet those who became members during my 7-year absence. So I have agreed to organize this year's party with the goal of returning it to its former glory. Alexis Kelner and I (and probably some others – you'll be hearing from me!) promise a NEW and thoroughly delightful program that you won't want to miss. For those new to the club, you have the opportunity to meet some of the "legends" and trade stories. The fun begins at 6:00. Bring something for the grill, a dish to share, and your beverage of choice. If you need a ride and/or door drop-off, please call me at (801) 733-4806 by Thurs., Aug. 20 so that arrangements can be made. Those wishing to carpool should meet at the BCC park-n-ride at 5:15. There is a \$3 member / \$5 non-member charge UNLESS you join the Lodge Work Party earlier in the day, which earns you a free admission. I guarantee you will be sorry if you miss this very special event!</p>
Aug 22 Sat	<p>Day Hike – Big Cottonwood Brighton Lakes – ntd – 4.0 mi Loop – 1200' ascent</p> <p><i>Meet:</i> 8:00 am at Big Cottonwood Canyon Park & Ride</p> <p><i>Organizer:</i> David Rabiger 801 964-8190 drabiger@utah.gov</p> <p>We will meet at the Park N Ride at the mouth of Big Cottonwood Canyon 8:00 AM. We will start our hike at the Silver Lake Visitor center, hike up to Twin Lakes, across to Lake Mary and then descend to the WMC Lodge. The lodge will be open for a work party which everyone is invited to join in. The evening will be the Club Old & New member party for a full day and evening of activity.</p>
Aug 22 Sat – Aug 23 Sun	<p>Car Camp – Boulder Mountain Lakes – ntd+</p> <p><i>Meet:</i> 5:00 pm at Registration required</p> <p><i>Organizer:</i> John Veranth 801 278-5826 veranth@xmission.com</p> <p>Hike to forested lakes on high, cool Boulder Mountain with spectacular views of the desert below. Leave Friday night and meet in Boulder Saturday morning. Register with the leader to arrange car pooling.</p>
Aug 22 Sat – Aug 23 Sun	<p>Road Bike – Self-contained Tour Overnight – mod – 100.0 mi Out & Back</p> <p><i>Meet:</i> 5:00 pm at Registration required</p> <p><i>Organizer:</i> Cheryl Soshnik 435 649-9008 csoshnik@yahoo.com</p> <p>This is a self-contained overnight tour, leaving from either Salt Lake or Coalville, or any other starting point of your choice. We will bike to either the Rockcliff Recreation Area on the Jordanelle or some campsite along Hwy 150 in the Uintas. We may even hook up with Robert Turner's Epic ride and get in on his dutch oven cooking! Please call or email if you are interested in this weekend ride for futher details.</p>
Aug 23 Sun	<p>Day Hike – Brighton Lakes To Sunset Peak – ntd</p> <p><i>Meet:</i> 9:30 am at Big Cottonwood Canyon Park & Ride</p> <p><i>Organizer:</i> Pete and Rebecca rebeccawallace38@msn.com</p> <p>Pete and Rebecca will co-lead this fairly long hike at an NTD pace. The wildflowers should be well in bloom, setting off the turquoise water.</p>
Aug 23 Sun	<p>Dog Hike – Millcreek – ntd</p> <p><i>Meet:</i> 12:30 pm at Skyline High School (3151 E 3760 S)</p> <p><i>Organizer:</i> Tom Silberstorf 801 255 2784</p> <p>afternoon dog hike in Millcreek, destination to be determined day of.</p>
Aug 23 Sun	<p>Day Hike – Daybright Loop – mod – Shuttle</p> <p><i>Meet:</i> 10:00 am at Big Cottonwood Canyon Park & Ride</p> <p><i>Organizer:</i> Bob Cady 801 274-0250 rcady@xmission.com</p> <p>Bob will head up the canyon to Days Fork. After shuttling cars, he will lead a hike up Days to the top where he will pick up a side trail that takes the group to the ridge above Silver Fork. After running the ridge between Silver Fork and Little Cottonwood, the group will drop into Grizzly Gulch, go over Twin Lakes pass down to Brighton to the shuttle cars. There will be a debriefing session at Molly Greens after the hike before heading back down canyon.</p>

Date	Activity
Aug 23 Sun	Day Hike – Leaders Choice – msd <i>Meet:</i> 8:00 am at 6100 South & Wasatch Park & Ride <i>Organizer:</i> Alex Rudd 801-971-9245 Alex will select a challenging hike suitable for strong hikers
Aug 23 Sun	Mountain Bike – Mid Mtn And Crest Via Millcreek – mod+ <i>Meet:</i> 8:15 am at Skyline High School (3251 E 3760 S) <i>Organizer:</i> Brad Yates 801 278-2423 bnyslc@earthlink.net We will ride up the Great Western to the Park City divide, drop to the Mid Mountain trail, around Iron Mountain, to Cressent Mine Grade to Shadow Lake, climb the divide, Catch the crest trail back to Millcreek. Water will be available at the Canyons for a refill.
Aug 23 Sun	Day Hike – Little Water Peak From The East – mod – Loop <i>Meet:</i> 8:00 am at Skyline High School (3151 E 3760 S) <i>Organizer:</i> Tony Barron 801 272-8927 Tony will lead this loop hike in the upper part of Mill Creek Canyon. He will head east to the meadow, then cut southeast thru the meadow and up to the ridge east of Little Water Peak. Heading west, on a portion of the trail he has not been on yet, will lead to the peak. After lunch it will be down to the lake and out the Little Water trail. There will be some bushwhacking on both sides of the peak. Note the early start time due to limited parking at the top.
Aug 24 Mon	Mountain Bike – Dog Lake Via Big Water – ntd+ <i>Meet:</i> 6:00 pm at Skyline High School (3251 E 3760 S) <i>Organizer:</i> Heidi Demartis 801-942-8088 heididemartis@excite.com A Monday evening ride for a change, ride this Wasatch classic With Heidi at a mellow pace. meet at 6 pm for a very prompt 6:10 departure.
Aug 25 Tue	Evening Mtn Bike – Park City Area – mod <i>Meet:</i> 6:00 pm at announced weekly <i>Carpool:</i> 5:20 pm at Parleys Way former Kmart lot (2703 Parleys Way) <i>Organizer:</i> Vince Desimone 435 649-6805 vincedesimone@yahoo.com Vince Desimone and Nick Calas will be leading the summer Park City area rides. Join the WMC bike email list for each week's meeting location or contact Vince for details.
Aug 25 Tue	Evening Hike – Organizer's Choice, Big Cottonwood Canyon – ntd <i>Meet:</i> 6:00 pm at Big Cottonwood Canyon Park & Ride <i>Organizer:</i> John Hail 801-266-3514 There will be a prompt 6:15 pm departure.
Aug 26 Wed	Canoe – Evening Paddle On The Jordan River – flat water <i>Meet:</i> 6:00 pm at To be announced <i>Organizer:</i> Marjorie Gendler 801 712-7890 gendler801@aol.com Unwind after work with an easy float. If you haven't paddled the Jordan before, you are in for a surprise at how delightful it is. We do different sections, so check the website or call on Tuesday to learn the put in location. Call if weather is questionable. Canoes and all kinds of kayaks welcome.
Aug 26 Wed	Evening Hike – Organizer's Choice, Mill Creek Canyon – ntd <i>Meet:</i> 6:00 pm at Skyline High School (3151 E 3760 S) <i>Organizer:</i> Pam Miller and Anne Polinsky 801-381-7942 or 801-466-3806 There will be a prompt 6:15 pm departure.

BE PREPARED! ALWAYS TAKE THE 10 E's AND CHECK THE LOCAL WEATHER CONDITIONS! WHAT ARE THE 10 E's? MAP/COMPASS, FLASHLIGHT, POCKETKNIFE, MATCHES/FIRE-STARTER, SUNSCREEN/BUG SPRAY, SUNGLASSES, CANDLE, FIRST AID KIT, EXTRA CLOTHES, & FOOD AND WATER

Date	Activity
Aug 27 Thu	Day Hike – Norm’s Thursday Group – ntd <i>Meet:</i> 5:00 pm at Registration required <i>Organizer:</i> Norm Pobanz 801 266 3703 Join Norm’s Thursday group for a nice weekday adventure. he will pick a location suitable for conditions. Norm plans on exploring some new areas this year so call for meeting time and place details. these trips usually end up in two groups, an NTD and a MOD.
Aug 27 Thu	Evening Hike – Organizer’s Choice, Little Cottonwood Canyon – ntd <i>Meet:</i> 6:00 pm at Little Cottonwood Canyon Park & Ride <i>Organizer:</i> Heidi DeMartis 801-942-8088 There will be a prompt 6:15 pm departure.
Aug 27 Thu	Dog Hike – K9’s Choice, Mill Creek Canyon – ntd <i>Meet:</i> 6:00 pm at Skyline High School (3151 E 3760 S) <i>Organizer:</i> Jean Acheson 801-633-5225 jeanacheson@comcast.net Well mannered dogs along with their well mannered owners are welcome. Please bring water for yourself and your four-footed friend and poop bags for your dog. Also, regardless of the leash law and day of the month, please bring a leash in case circumstances arise where it is needed. This hike is open to the dog-less as well. The hike will be lead at a turtle pace. There will be a prompt 6:15 pm departure.
Aug 28 Fri – Aug 30 Sun	Canyoneering – -the Subway In Zion – mod- <i>Meet:</i> 4:00 pm at Registration Required <i>Organizer:</i> Rick Thompson gone2moab@hotmail.com Due to popular demand, (the annual but unposted august 1-2 trip was completely filled by January 1), I have decided to schedule a second Subway/Orderville trip to Zion this summer. So if you’ve heard about the fabulous Subway in Zion for years, but have never had the opportunity to do it, (note- the idea of this trip IS to take people who have never done it before) here is your chance. Whether you see it as the perfect introduction to canyoneering, the ideal way to experience the backcountry of Zion, or the ultimate tandem of two unbelievable day hike adventures, this is your trip. In addition to the Subway, we will be doing a similar hike, the incomparable Orderville canyon, which like the Subway, involves an all day hike, some serious scrambling, and some swimming; a couple of fun high energy days. We will be driving down after work, on Friday Aug 29, doing the two hikes Saturday and Sunday, and then returning home Sunday night. This trip is also now full.
Aug 29 Sat	Climb – South Ridge Of Mount Superior – msd – 10.0 mi Out & Back – 4000’ ascent <i>Meet:</i> 7:00 am at Little Cottonwood Canyon Park & Ride <i>Organizer:</i> Mark Borges mborges@xmission.com This route is a 5.3 scramble with a 5.5 crux on the South Ridge of Mt. Superior. Some sections involve severe exposure, experience with technical rock climbing is required. Maximum group size is 3 including the leader. For more information contact Mark Borges at mborges@xmission.com
Aug 29 Sat	Day Hike – Pine Hollow – mod <i>Meet:</i> 9:00 am at South end of the Sandy REI parking lot <i>Organizer:</i> Cindy Crass 801 530-7331 cjcrass@cnmlaw.com Cindy will lead this MOD hike in the Box Elder Peak area where the group can enjoy some awesome views of Timp.
Aug 29 Sat	Hike – Big Cottonwood Green’s Basin – ntd – 4.0 mi Out & Back – 1500’ ascent <i>Meet:</i> 8:00 am at Big Cottonwood Canyon Park & Ride <i>Organizer:</i> David Rabiger 801 964-8190 drabiger@utah.gov From Spruces, we will hike up through fir and aspen forest to a pretty meadow. WMC members will meet with a group from the Utah Dept of Health for an enjoyable morning hike.
Aug 29 Sat	Boating Meeting/social – Pink Flamingo – flat water – Out & Back <i>Meet:</i> 6:30 pm at 3195 So. Young Haven Circle (2420 Ea.) Enter from 2300 East 3225 South <i>Organizer:</i> Roger Upwall 801-466-0219 Boaters Pink Flamingo Party, All WMC members invited, Wear Pink, Outrageous costumes encouraged.

Date	Activity
Aug 30 Sun	Day Hike – Catherine’s Pass Via Albion Basin – ntd <i>Meet:</i> 9:00 am at Little Cottonwood Canyon Park & Ride <i>Organizer:</i> Christine Schnitzer 321 223-1580 christinerose1@aol.com Christine will do this hike again to make sure nothing was missed from the first time.
Aug 30 Sun	Road Bike – Leader’s Choice Sunday – mod- – 40.0 mi Loop <i>Meet:</i> 5:00 pm at Disseminated via the Bike email list <i>Organizer:</i> Marcia Hansen 801 486-5724 hansen5200@msn.com A 30- 50 mile bike ride in the cool air of Park City. Depending on the whims of the group, we’ll find a route to include a social break for coffee, etc.
Aug 30 Sun	Day Hike – Tri-canyon – msd- – Loop <i>Meet:</i> 7:30 am at Little Cottonwood Canyon Park & Ride <i>Organizer:</i> Julie Kilgore 801-244-3323 jk@wasatch-environmental.com Julie will take a shot of leading this hike with Brad’s help to find the “notches”. This loop hike goes up to Maybird Lakes, up and over the ridge through the the One-True-Notch to Red Pine Lake, up and over another ridge through the Other-One-True-Notch to White Pine Lake, and return. Note the early start time.
Aug 30 Sun	Day Hike – Mt Raymond – mod – 8.5 mi Out & Back – 3161’ ascent <i>Meet:</i> 9:00 am at Big Cottonwood Canyon Park & Ride <i>Organizer:</i> Steve Duncan 801 474-0031 duncste@comcast.net 360 degree views of Millcreek and Big Cottonwood canyons. Butler Fork is the planned trail but if the group is adventurous we could take a less traveled route up Mill A gulch.
Aug 30 Sun	Mountain Bike – Millcreek And Iron Mt Via Park City – mod+ <i>Meet:</i> 9:00 am at Park City Mountain Resort <i>Carpool:</i> 8:30 am at Parleys Way former Kmart lot (2703 Parleys Way) <i>Organizer:</i> Cheryl Krusko ckrusko@peoplepc.com The ride will Climb up to the Crest via th Spiro trail into upper Millcreek loop to Iron Mountain and back to Park City
Aug 30 Sun	Day Hike – Reynolds Peak Loop – mod – 4.0 mi Loop – 1800’ ascent <i>Meet:</i> 8:00 am at Big Cottonwood Canyon Park & Ride <i>Organizer:</i> Vicky McDaniel 801 576-0160 Vicky will lead this hike to Reynolds Peak, the highest point on the short ridge dividing Butler Fork from Big Cottonwood Canyon. Beat the heat with an early start.
Sep 1 Tue	Evening Mtn Bike – Park City Area – mod <i>Meet:</i> 6:00 pm at announced weekly <i>Carpool:</i> 5:20 pm at Parleys Way former Kmart lot (2703 Parleys Way) <i>Organizer:</i> Vince Desimone 435 649-6805 vincedesimone@yahoo.com Vince Desimone and Nick Calas will be leading the summer Park City area rides. Join the WMC bike email list for each week’s meeting location or contact Vince for details.
Sep 1 Tue	Evening Hike – Organizer’s Choice, Mill Creek Canyon – ntd <i>Meet:</i> 6:00 pm at Skyline High School (3151 E 3760 S) <i>Organizer:</i> Steve Duncan 801-474-0031 There will be a prompt 6:15 pm departure.
Sep 2 Wed	Evening Hike – Organizer’s Choice, Big Cottonwood Canyon – ntd <i>Meet:</i> 6:00 pm at Big Cottonwood Canyon Park & Ride <i>Organizer:</i> Lynette Brooks 801-523-6225 There will be a prompt 6:15 pm departure.

Date	Activity
Sep 3 Thu	Day Hike – Norm’s Thursday Group – ntd <i>Meet:</i> 5:00 pm at Registration required <i>Organizer:</i> Norm Pobanz 801 266 3703 Join Norm’s Thursday group for a nice weekday adventure. he will pick a location suitable for conditions. Norm plans on exploring some new areas this year so call for meeting time and place details. these trips usually end up in two groups, an NTD and a MOD.
Sep 3 Thu	Evening Hike – Organizer’s Choice, Little Cottonwood Canyon – ntd <i>Meet:</i> 6:00 pm at Little Cottonwood Canyon Park & Ride <i>Organizer:</i> Steve Carr 801-261-5787 There will be a prompt 6:15 pm departure.
Sep 3 Thu	Dog Hike – K9’s Choice, Mill Creek Canyon – ntd <i>Meet:</i> 6:00 pm at Skyline High School (3151 E 3760 S) <i>Organizer:</i> Mike Stone 435-647-6327 mwstone@gmail.com Well mannered dogs along with their well mannered owners are welcome. Please bring water for yourself and your four-footed friend and poop bags for your dog. Also, regardless of the leash law and day of the month, please bring a leash in case circumstances arise where it is needed. This hike is open to the dog-less as well. The hike will be lead at a turtle pace. There will be a prompt 6:15 pm departure.
Sep 4 Fri – Sep 7 Mon	Climb – City Of Rocks – ntd <i>Meet:</i> 5:00 pm at Registration required <i>Organizer:</i> Peter Campbell 801 733-0313 Come join us for the famous season blow out event! The City of Rocks is arguably the best climbing area (for all levels) in the entire West. Clark & Holley backed out of leading this trip due to a better offer on the White Rim. Please Contact Peter Campbell for more information & or to register. Bring your own food and drink. BRING YOUR OWN ROPE/GEAR AND KNOW WHO YOUR CLIMBING PARTNER(S) WILL BE BEFORE YOU LEAVE. This will not be a club sponsored top rope event as COR is not conducive to group top roping. We have a group campsite at The Bread Loaves for Friday, Saturday and Sunday nights. Group camp fee (\$265) to be shared amongst attendees. Call for registration. Those previously registered with Clark already on the list. Limit 25.
Sep 5 Sat	Family Hike – Twin Lakes Pass Via Brighton - Beginner Friendly – ntd – 5.0 mi Out & Back – 1300’ ascent <i>Meet:</i> 10:00 am at Big Cottonwood Canyon Park & Ride <i>Organizer:</i> Randy Long 801 733 9367 This is a great hike with a gradual elevation gain, spectacular overlooks, and a couple beautiful lakes. This hike will have co-leaders to allow for a range of pace.
Sep 5 Sat	Day Hike – Red Pine Lake From White Pine Trailhead – mod – 6.9 mi Out & Back – 1930’ ascent <i>Meet:</i> 8:00 am at Little Cottonwood Canyon Park & Ride <i>Organizer:</i> Bernard Rouse 435-882-4427 bernardrouse@msn.com Join Bernard & Ruth on one of their favorite hikes!
Sep 6 Sun	Hike – Red White Red White – msd – Loop <i>Meet:</i> 5:00 pm at Registration required <i>Organizer:</i> Brad Yates 801 278-2423 bnyslc@earthlink.net Up Red Pine, climb White Baldy, traverse to Red Baldy, descend White Pine. A striking route on the Little Cottonwood-American Fork ridge line, the route features extensive exposed scrambling.
Sep 6 Sun	Day Hike – Organizers Choice - Loop Route – mod – Loop <i>Meet:</i> 8:00 am at 6100 South & Wasatch Park & Ride <i>Organizer:</i> Karen Perkins 801-272-2225 Karen will lead the group on one of her favorite Loop hikes

Date	Activity
Sep 6 Sun	Day Hike – Germania Pass – ntd – 5.0 mi – 1300’ ascent <i>Meet:</i> 9:00 am at Little Cottonwood Canyon Park & Ride <i>Organizer:</i> Monty Gully 801 583-0287 Hike the ski run! From the base of Collins Lift to Germania Pass. Great views of Mount Superior, Mount Baldy, and Flagstaff Peak. Bring your camera.
Sep 7 Mon	Day Hike – Churchfork Peak Loop – mod – Loop <i>Meet:</i> 9:00 am at Skyline High School (3151 E 3760 S) <i>Organizer:</i> Tony Barron 801 272-8927 Tony will go up Burch Hollow trail and catch the ridge west to Churchfork peak, then back east to the Mount Aire saddle. There will be bushwacking and route finding.
Sep 8 Tue	Evening Mtn Bike – Park City Area – mod <i>Meet:</i> 6:00 pm at announced weekly <i>Carpool:</i> 5:20 pm at Parleys Way former Kmart lot (2703 Parleys Way) <i>Organizer:</i> Vince Desimone 435 649-6805 vincedesimone@yahoo.com Vince Desimone and Nick Calas will be leading the summer Park City area rides. Join the WMC bike email list for each week’s meeting location or contact Vince for details.
Sep 8 Tue	Evening Hike – Organizer’s Choice, Mill Creek Canyon – ntd <i>Meet:</i> 6:00 pm at Skyline High School (3151 E 3760 S) <i>Organizer:</i> Tony Barron 801-272-8927 There will be a prompt 6:15 pm departure.
Sep 10 Thu	Dog Hike – K9’s Choice, Mill Creek Canyon – ntd <i>Meet:</i> 6:00 pm at Skyline High School (3151 E 3760 S) <i>Organizer:</i> Jean Acheson 801-633-5225 jeanacheson@comcast.net Well mannered dogs along with their well mannered owners are welcome. Please bring water for yourself and your four-footed friend and poop bags for your dog. Also, regardless of the leash law and day of the month, please bring a leash in case circumstances arise where it is needed. This hike is open to the dog-less as well. The hike will be lead at a turtle pace. There will be a prompt 6:15 pm departure.
Sep 11 Fri – Sep 12 Sat	Car Camp – Family, Uinta’s - Scudder Lake – ntd <i>Meet:</i> 5:00 pm at Registration required <i>Organizer:</i> Randy Long 801 733 9367 camp at beaver view campground and hike the highline trail to scudder lake. A wonderful 2 mile hike to a beautiful mountain lake with minimal elevation gain. There are fees for the mirror lake highway and the campground. Warm gear will be needed this time of year.
Sep 12 Sat	Trail – Maintenance – ntd <i>Organizer:</i> Chris Biltoft 801-364-5729 biltoftc@yahoo.com More details to come.
Sep 12 Sat – Sep 19 Sat	Road Bike – So. Utah Pannier Tour – mod+ – 250.0 mi Loop <i>Meet:</i> 5:00 pm at Registration required <i>Organizer:</i> David Rumbellow 801 581-9650 djr3@xmission.com A repeat of last years successful tour! This will be a one week self-supported camping bike tour of Southern Utah. Panniers or bike trailers only. NO CARS, SAG WAGONS, OR OTHER MOTORIZED VEHICLES. It’s a 250 mile loop between Capitol Reef NP and Bryce Canyon NP. We will not bike more than 50 miles per day, leaving plenty of time for hiking and sightseeing along the way. Prerequisites: Previous bike touring experience (either on your own or the Jordanelle Bike Touring Weekends we’ve been doing for the last 3 years), and membership in either the WMC or the BCC. Trip size is limited to about 10 participants, and pre-registration and planning meeting are required. Contact me ASAP if you are planning on coming to reserve your spot or for more information.

Date	Activity
Sep 12 Sat	Day Hike – Wasatch Wildcat Ridge Traverse – ext <i>Meet:</i> 5:00 pm at Registration required <i>Organizer:</i> Lubos Pavel 435 659-1655 lubospavel@juno.com CHALLENGING SCRAMBLE: Hike up Mount Olympus and continue east over Triangle Peak to Mount Ryamond, descending down to the Butler Fork trailhead. This long-day strenuous hike starts early morning taking good 13 hours to finish. You must have good endurance, the capability to keep a steady pace, and a stable foot on this fun rock scrambles in order to finish this hike in a reasonable time. Call Lubos to register
Sep 19 Sat	Day Hike – Cottonwood Ridge-broad's Fork To Superior – ext – 12.0 mi <i>Meet:</i> 5:00 pm at Disseminated via the Hike email list <i>Organizer:</i> Matthew VanHorn 801 272-5824 hatmanvorn@hotmail.com This hike/ridge scramble begins at the Mill B South trailhead. The route goes up Broad's Fork to the Twin Peaks, then over Sunrise, Dromedary and several unnamed peaks along the Cottonwood Ridge until Monte Cristo Peak. The last peak of the day is Mt Superior. This is a long, difficult ridge hike with plenty of serious exposure.
Sep 19 Sat	Day Hike – Organizer's Choice – mod+ <i>Meet:</i> 5:00 pm at Registration required <i>Organizer:</i> mohamed abdallah 801-466-9310 join mohamed for a fall favorite of his choice.
Sep 19 Sat	Mountain Bike – Annual Mormon Trail And Bbq Ride – mod <i>Meet:</i> 10:00 am at Jeremy Ranch end of paved road <i>Carpool:</i> 9:40 am at Parleys Way former Kmart lot (2703 Parleys Way) <i>Organizer:</i> Greg Libecci 435-645-9699 glibecci@yahoo.com More details coming in September
Sep 19 Sat	Day Hike – Mount Nebo – msd – 9.0 mi – 3800' ascent <i>Meet:</i> 5:00 pm at Registration required <i>Organizer:</i> Lana Christianen 801-599-4533 iaccount4u@gmail.com Join Lana for a trek to Mount Nebo, the highest and southernmost mountain in the Wasatch Range.
Sep 22 Tue – Sep 30 Wed	<i>Meet:</i> 9:00 am at Boat Shed (4340 South, 300 West) <i>Organizer:</i> Bruce Beck 801 359-0220 bbeck7@gmail.com Raft and kayak trip.Contingent on sufficient water flow and experienced applicants.
Sep 22 Tue – Sep 27 Sun	Car Camp – Grand Canyon North Rim 6 Days <i>Meet:</i> 5:00 pm at Registration required <i>Organizer:</i> Aaron Jones 801 467-3532 ajonesmvp@msn.com Note: This trip has been extended to six days. The north rim of the Grand Canyon offers forests and vistas with a variety of hikes.Creature comforts such as restaurants, bars, and showers are available.The leader has a campsite reserved that will accomodate three tents, two cars, and six people.Any additional campsites should be reserved ASAP.
Sep 23 Wed – Sep 27 Sun	Car Camp – Grand Canyon North Rim <i>Meet:</i> Registration Required <i>Organizer:</i> Aaron Jones 801 467-3532 ajonesmvp@msn.com The north rim of the Grand Canyon offers forests and vistas with a variety of hikes.Creature comforts such as restaurants, bars, and showers are available.The leader has a campsite reserved that will accomodate two tents, two cars, and six people.Any additional campsites should be reserved ASAP.

Date	Activity
Sep 26 Sat	Lodge Work Party – September Maintenance – ntd <i>Meet:</i> 9:15 am at WMC Lodge <i>Carpool:</i> 8:30 am at Cottonwood Park & Ride at 6200 S. & Wasatch Blvd. <i>Organizer:</i> Robert Myers 801 466-3292 robertmyers47@gmail.com Summer work party to continue the work on the summer projects. Possible some routine housekeeping and cleanup. Work for everyone, lunch provided; just bring work gloves, work clothes and sunscreen. Temperature will be lower at Brighton so dress for the occasion. The lodge will be open for an overnight stay either Friday or Saturday night, call to arrange. For more information, call Robert at either (H)801-466-3292 or 801-651-9965 for more information.
Sep 26 Sat	Hike – Bullion Divide Backwards Plus Or Minus A Peak Or Two – msd <i>Meet:</i> 7:30 am at Little Cottonwood Canyon Park & Ride <i>Organizer:</i> Julie Kilgore 801.244-3323 jk@wasatch-environmental.com Always wanted to bag several of the highest peaks of Salt Lake County? This hike starts at Albion Basin campground, picks up the ridge to Sugarloaf, then works across the ridgeline for 6 to 8 peaks (depending on the group) before exiting at the White Pine trailhead. Come prepared for a long day, some scrambling, boulder hopping, and ridgeline exposure.
Sep 26 Sat	Canyoneering – Rappeling Class – ntd+ <i>Meet:</i> 9:00 am at Dogwood, BCC <i>Organizer:</i> Rick Thompson gone2moab@hotmail.com Learn to rappel, and open the door to all kinds of new experiences and places. With proper instruction it is safe and easy- your fears are quickly banished. Whether you have never done it, did once long ago and are not sure you remember, or are looking into technical canyoneering and have heard horror stories about triple digit free rappels (on an 8 mil rope?) this is a great opportunity to learn not only how to do it, but also to be comfortable and safe on rope. Dogwood is the first picnic area in Big Cottonwood Canyon, just 1 mile up the canyon, on the right. Park on the highway to avoid a picnic area use fee, walk thru the site, up canyon, and follow a trail 50 yards past the last table to the climbing wall. A harness, helmet, a locking carabiner and descending device are needed, I have a few extras for folks who do not have and are unable to beg, borrow, or steal one, no need to buy before you try- for a 5\$ rental fee i will supply all 4 of the essential pieces of equipment, but you need to make those arrangements with me in advance. A pair of leather gloves is a good idea as well.
Oct 1 Thu – Oct 21 Wed	Hike – Multi-sport Trip To Nepal – mod <i>Meet:</i> Registration Required <i>Organizer:</i> Bob Norris 801-943-6039 bobnepal@comcast.net Join Bob Norris for a multisport adventure in Nepal in October. It will involve trekking, white water rafting and a jungle adventure in the Royal Chitwan Game Reserve. This will allow you to experience several of the delights of this amazing country! Price will depend to some extent on the number of persons, but will surely be less than you expect. For general questions or for a detailed trip description contact Bob Norris at 8019436039 or email bobnepal@comcast.net
Oct 3 Sat	Day Hike – Flat Top Peak - Exploratory – msd- – 10.0 mi Out & Back – 4500' ascent <i>Meet:</i> 5:00 pm at Disseminated via the Hike email list <i>Organizer:</i> Gregory Bronder 435 843-9495 gdbkcb03@comcast.net Join a hike to the tallest peak in the Oquirrh Range at 10,620 feet and one of Utah's 8 ultra prominence peaks. I have not personally summited this peak, but I am familiar with the Oquirrh Range and the route. The route will travel a rough 4WD road as far as is accessible. There is no trail to the top and the hike will require routefinding and bushwacking. We will also summit Lewiston peak on the route. Registration required. Limit of 6
Oct 3 Sat	Day Hike – Organizer's Choice – mod+ <i>Meet:</i> 5:00 pm at Registration required <i>Organizer:</i> mohamed abdallah 801-466-9310 join mohamed for a fall favorite of his choice.

Date	Activity
Oct 10	Backpack – Pasture Track – ntd+ – 14.0 mi Shuttle – 500' ascent
Sat –	<i>Meet:</i> 5:00 pm at Registration required
Oct 11	<i>Organizer:</i> Will McCarvill 801 942-2921 lizandwill@msn.com
Sun	Easy backpack on the Pasture, a bench above the chute of Muddy Creek and below the cliffs of the Slaughter Slopes. We'll start at Tomsich Butte and work our way to Chimney Canyon with it's deeply imbedded forks. The way out will lead past old uranuim mine cabins and out to Hidden Slendor airstrip.

Designers of the WMC web site



accent on artistry
THE ART OF BRAND BUILDING

WE CREATE SALES TOOLS THAT BUILD YOUR BRAND

Logos, Brochures, Web design/programming,
Brochures/prints, Packaging.

For more information contact:

Henri de Baritault
WMC member

801-694-6449
email@accentonartistry.com

www.AccentOnArtistry.com

The Yoga Cottage

YOGA FOR HIKERS
THURSDAYS
5:45 PM

41 E 7720 S
MIDVALE, UT



801-568-0332

WWW.OURYOGACOTTAGE.COM

A Community Studio

The Yoga Cottage & Community Studio Inc.

WASATCH MOUNTAIN CLUB (WMC)
MEMBERSHIP APPLICATION
(Do not use for renewals.)

Please read carefully and completely fill out both sides of the page. Print legibly, please.

I am applying for membership as: _____ Single _____ Couple

Name: Applicant 1: _____ Birth date: _____

Name: Applicant 2: _____ Birth date _____

Address: _____

City, State, Zip _____

Applicant 1: Main phone: _____ email address: _____

Applicant 2: Main phone: _____ email address: _____

PRIVACY INFORMATION: The WMC defaults to publish name, phone and email on website “Member’s list” area. This information is only available to active members on the web site. With your permission, we also occasionally release our address list to WMC-Board approved wilderness and/or conservation organizations for one-time mailings under the stipulation that they do not continue to use the list or provide it to other. You may opt to (1) have your address published on the “Members Only” area but not made available to other organizations, (2) have your address published on the “Members Only” area and provided to Board-approved organizations, or (3) not have your address on the WMC roster nor given to other organizations.

YOU NEED TO TAKE THE FOLLOWING ACTION: Once you have been notified that your application has been accepted, log in to the WMC site and select your level of privacy from the menu under Club Preferences. If you do not have computer access or need help, please contact the Membership Director to make your preferences known.

If you would like a printed copy of the membership roster, you may download a pdf file.

If you are a member and do not have computer access and would like a membership roster, please contact the Membership Director and that list will be provided to you.

Membership dues:

\$40.00 for single membership (Annual dues \$35.00 plus \$5.00 paper application fee)

\$55.00 for couple membership (Annual dues \$50.00 plus \$5.00 paper application fee)

\$25.00 for student membership (Annual dues \$20.00 plus \$5.00 paper application fee)

Student members must be full-time student, age 30 and under.

Enclosed is \$_____ for application fee and first year’s dues. Check or money order only. Please make checks payable to Wasatch Mountain Club.

WASATCH MOUNTAIN CLUB (WMC)
Applicant Agreement, Acknowledgement of Risk and Release from Liability

VOLUNTARY PARTICIPATION: I acknowledge that my participation in all WMC activities is voluntary. No one is forcing me to participate. I agree to abide by the rules of the WMC.

ASSUMPTION OF RISK: I am aware that WMC activities involve risks, and may result in injury, illness, death, and damage to or loss of property. These dangers include but are not limited to: the hazards of traveling in remote areas without medical services or care, the forces of nature, the inherent dangers involved in participation in sports, wilderness travel, and social activities, and the negligent actions of other persons or agencies. I understand that all activities should be considered exploratory, with the possibility of unexpected conditions and route variations. The WMC is not, nor does it provide, a professional guide service. In order to partake in the enjoyment and excitement of WMC activities, I am willing to accept the risk and uncertainty involved as being an integral part of the activity. I acknowledge this risk, and assume full responsibility for any and all risks of injury, illness, death, or damage to or loss of my property.

PREPARATION: I understand that it is my responsibility to evaluate the difficulties of any WMC activity I participate in, and decide whether I am prepared by having the experience, skill, knowledge, equipment, and the physical and emotional stamina to participate safely.

RELEASE OF LIABILITY AND PROMISE NOT TO SUE: I agree that I, my heirs, personal or legal representatives hereby do release and hold harmless from all liability, and promise not to bring any suit or claim against the WMC, its activity organizers, directors, agents or representatives for any injury, illness, death or damage and loss of property resulting from my participation in any WMC activity even if they negligently caused the injury or damage.

LEGAL FEES: Should it become necessary for the WMC, or someone on their behalf, to incur attorney fees and costs to enforce this agreement, I agree to pay the WMC reasonable costs and fees thereby expended, or for which liability is incurred.

INSURANCE: I understand that the WMC strongly recommends that I maintain insurance sufficient to cover any injury, illness or property damage that I may incur while participating in WMC activities. In the event of injury, illness or death related to any WMC activity, I recognize that I, or my estate, will bear the full cost of my evacuation or recovery, and any related medical care that I may need. I acknowledge that the WMC carries no insurance whatsoever for any participants in WMC activities.

My signature below indicates I have read this entire document, understand it completely, understand it affects my legal rights, and agree to be bound by its terms. I certify I am at least 18 years old.

Signature 1 _____ Print Name 1 _____ Date: _____

Signature 2 _____ Print Name 2 _____ Date: _____

Mail completed application to:

Membership Director
Wasatch Mountain Club
1390 South 1100 East #103
Salt Lake City, UT 84105-2443

**REI COMMUNITY CALENDAR
ANNOUNCEMENTS**

CONTACT: Celeste Eppler EMAIL: ceppler@rei.com

PHONE: (801) 486-2100 ext. 207

SANDY REI (10600 S 230 W)

Bike Maintenance 101 - Thurs, Aug 6 @ 7pm

(Also Thurs, Jul 23 @ 7pm @ REI SLC)

Learn to keep your bicycle in good working order.

GPS 101 - Thurs Aug 13 @ 7pm

(Also at SLC REI on Thurs, Aug 20 @ 7pm)

Learn how to use a GPS, Global Positioning System.

Best in Tent Camping: Utah - Thurs, Aug 20 @ 7pm

(Also at SLC REI on Tues, Aug 4 @ 7pm)

Come meet Jeffrey Steadman, author of The Best in Tent Camping: Utah. Get ideas and hear about the sites in his book hand selected for their appeal to tent campers who love their seclusion, beauty, quiet and security.

SALT LAKE CITY REI (3285 E 3300 S)

Humla, Nepal: Off the Beaten Path with Bodhi Tree

Foundation - Mon, Aug 10 @ 7pm

Bodhi Tree Foundation, for an evening of photos and discussion about their work improving maternal-child health in the hidden Himalayas of Nepal. See photos of breathtaking scenic vistas, raging rivers and waterfalls. Come hear about cultural experiences in Hindu villages and Buddhist monasteries from an adventure of a lifetime! Humla is one of the most remote districts in Nepal located in the northwest corner in the mid-western region next to the Tibetan border. Access to health care services here are extremely limited due to its isolation and lack of resources. In October 2008, Sarah, a Registered Nurse, led the first all-women's trek ever to venture through the district of Humla. The money raised from the trek paid for 29 local female community health volunteers & traditional birth attendants to attend a 5-day safe motherhood training in Humla. It also paid for the 300 clean delivery kits to be distributed throughout the region. Bodhi Tree Foundation is a nonprofit organization whose mission is to support and promote community based activities that focus on maternal-child health in the district of Humla, Nepal.

Sacred Images : A Vision of Native American Rock Art

Tues, Aug 18 @ 7pm

Join us for a photographic and historical explanation of the four major styles of Utah rock art (petroglyphs and pictographs). Rock art scholar David Sucec and photographers Craig Law and John Telford will share their experiences in creating the above-titled book.

COMMUNITY / VOLUNTEER / CLASSES

Bike Drive for Salt Lake City Bicycle Collective

Fri, Aug 7 5pm thru Sun, Aug 9 5pm (store hours only)

Collective during this two day bike drive during store hours at either REI SLC or REI Sandy. The Salt Lake City Bike Collective provides refurbished bicycles and educational programs to the community, focusing on children and lower income households. They'll accept bikes in any condition, especially adult road bikes, kid's bikes, parts and tires. All donations to the SLC Bike Collective are tax-deductible. Go to the self serve kiosk at Customer Service, fill out the paperwork and turn it in with your donation to any CS representative. They take it from there. Unfortunately we're not able to accept helmets or stationary (exercise) bicycles. For more information about this organization check out <http://www.slcbikecollective.org/>

Utah Lake Century Epic Ride (ULCER)

Sat, Aug 8

Join the Bonneville Cycling Club (BCC) as it celebrates its 25th annual Utah Lake Epic Century Ride (ULCER) on Saturday, August 8th. The ride will begin and end at the Electric Park Pavilion at Thanksgiving Point. Three different ride options are available: 33 miles, 67 miles and 111 miles. Registration is limited to 2500 riders. For more details and to register online go to: www.bccutah.org Early packet pick up will be Wednesday, August 5th from 5:00-8pm at REI Sandy, 230 W 10600 S, Sandy. Limited edition jerseys will only be available at early packet pick-up and day of event

**BE AWARE! CHECK ONLINE AT
WWW.REI.COM
FOR CONTINUALLY UPDATED
EVENTS, AS WELL AS
CHILD-FRIENDLY EVENTS!!!**

**WASATCH MOUNTAIN CLUB
1390 SOUTH 1100 EAST
SALT LAKE CITY, UT 84105**

**PERIODICALS
POSTAGE PAID
SALT LAKE CITY,
UTAH**

Millcreek Trail Maintenance - Sat, August 8th

8am - 2pm Meet at 8am at Skyline High School, wear long pants and good boots, bring work gloves, water, and a lunch. Tools provided by Forest Service.

Lodge Work Party - Sat, August 22nd

9:15am - whenever Routine housekeeping and cleanup at the Lodge. Bring work gloves, work clothes, and sunscreen. Lunch provided. Lodge will be open for an overnight stay for WMC members Friday and/or Saturday night.

Visit us online at **www.wasatchmountainclub.org**