



The Rambler

January, 2012

The Monthly Publication of the Wasatch Mountain Club

Volume 91, Number 1
The Wasatch Mountain Club
1390 S. 1100 E. #103
Salt Lake City, UT 84105-2443
(801) 463-9842

2011-2012 GOVERNING BOARD

President: John Veranth
(278-5826) veranth@xmission.com

Vice-President: Will McCarvill
(942-2921) lizandwill@msn.com

Secretary: Susan Allen
(466-3292) sallen400@gmail.com

Treasurer:
Co-director: Clark Richards (272-5642)
cgrichards@aol.com
Co-director: John Butler (718-4166)
john@utahman.com

Membership:
Co-director: Marilyn Smith
(273-0369) marilynsmith@msn.com
Co-director: Karen Perkins
(272-2225) karenp@xmission.com
Co-director: Margaret Medina
(231-0614) margaretmedina7@yahoo.com

Historian: Alexis Kelner
(359-5387) kelner@xmission.com

Biking:
Co-director: Marcia Hansen
(486-5724) hansen5200@msn.com
Co-director: Barb Hanson
(485-0132) barbhanson30@hotmail.com

Boating Director: Don Urrizaga
435-884-0147 don_urrizaga@yahoo.com

Conservation Director: Will McCarvill
(942-2921) lizandwill@msn.com

Social:
Co-director: Holley Richards (554-1125)
cgrichards@aol.com
Co-director: Cindy Crass (530-7331)
cjcrass@cnmlaw.com

Hiking:
Co-director: Julie Kilgore
(572-9838) jk@wasatch-environmental.com
Co-director: Alex Rudd
(971-9245) rudd94@gmail.com

Information Technology: Bret Mathews
(831-5940) bretmaverick999@yahoo.com

Co-director: Eric Wiseman
(558-3268) wmc@bumpsy.com

Public Relations:
Donnie Benson
(466-5141) dbenson@u2m2.utah.edu

Lodge: Foundation Liaison, Bob Myers
(466-3292) robertmyers47@gmail.com

Caretaker: Todd Nerney
caretakerwmc@yahoo.com

Lodge Use: Earl Cook
(580-6188) ecookut@hotmail.com

Mountaineering:
Co-director: Al Bui (518-250-9808)
albertbui@alum.swarthmore.edu
Co-director: Paul Gettings (599-7311)
p.gettings@utah.edu

Rambler Publications:
Editor: Kathy Craig (502-0465)
wasatchmountainclub@gmail.com

Winter Sports Director: Walt Haas
(209-2545) haas@xmission.com

COORDINATORS:
Adopt-a-Highway: Jamie Kulju
(360-606-9405) jrkulju@gmail.com

Boating Equipment: Bret Mathews
(831-5940) bretmaverick999@yahoo.com

Canoeing: Margie Gendler
(712-7890) gendler801@aol.com

Canyoneering: Rick Thompson
gone2moab@hotmail.com

Evening Hikes: Mark Bloomenthal
(842-1242) markbloomenthal@yahoo.com

Mountain Biking: Cheryl Krusko
(474-3759) ckrusko@gmail.com

Rambler Graphics:
Suzanne Nakagawa (362-8383)

Rambler Mailing: Chris Venizelos
(554-3697)

Sing-a-Long: Fred Tripp
(435-649-4507) fredgtripp@gmail.com

Ski, Backcountry: Mark Borges
(363-4504) mborges@xmission.com

Ski, Touring: Mike Berry
(583-4721) mberryxc@earthlink.net

Snowshoeing: Deirdre Flynn
(466-9310) deirdre.flynn@marriott.com

Trails: Dave Andrenyak
(582-6106) andrenyakda@aim.com
TRUSTEES:

Jerry Hatch 2008-2012
(583-8047) pikahatch@gmail.com

Steve Duncan 2009-2013
(892-0443) duncste@comcast.net

Dave Rumbellow 2010-2014
(889-6016) djr3@xmission.com

Cheryl Soshnik 2011-2015
(435-649-9008) csoshnik@yahoo.com

Trustee Emeritus:
Dale Green (277-6417)

The Rambler (USPS 053-410) is published monthly by the Wasatch Mountain Club. Subscription rates of \$12.00 per year are paid for by membership dues only. Periodicals Postage Paid at SLC, Utah.

CHANGE OF ADDRESS/Missing

Rambler: Please call the WMC office or send your new address to the Membership Director. This publication is not forwarded by the Post Office. Allow 45 days for address changes. Replacement copies are available, while they last, at the WMC office during office hours.

POSTMASTER: Send address changes to: The Rambler, Membership Director, 1390 S. 1100 E, #103, Salt Lake City, UT 84105-2443.

COMMERCIAL ADVERTISING:

The Rambler encourages and supports your products and services through pre-paid commercial advertisements. Please send an e-mail to WasatchMountainClub@gmail.com for information or to place an ad.

Prepayment is necessary for single month advertisements and invoicing and net 30 for repeat advertisements.

Full Page: \$95/month

Half Page: \$50/month

Quarter Page: \$30/month

Business Card: \$15/month

The right is reserved to edit all contributions and advertisements, and to reject those that may harm the sensibilities of WMC members or defame the WMC.

Copyright 2012 Wasatch Mountain Club

IN THIS ISSUE:

The WMC Lodge	4
Nominations Banquet/Social.	5
2012 Board Candidates	6
Boating Director's Message	8
Avalanche Eduction Free Talk	9
Alexis Kelner at REI	9
General Membership Meeting	10
New Members	22
Faint Trails in the Wasatch	30
Release from Liability Form.	34
Activities Listing	36
Membership Application	53
Non-WMC Activiteies	55

FRONT COVER:

**Vince Desimone's
Armstrong Trail Snowshoe
12/6/11**

**L-R: Cheryl Soshnik, Dale Gilson,
Flora Dal Canto, Mike Gibby, Sigi
Verhalen, Donna Fisher, Susan
Alleva, Vince Desimone, Sandy
Melville, Hope Melville and
Robert Turner**

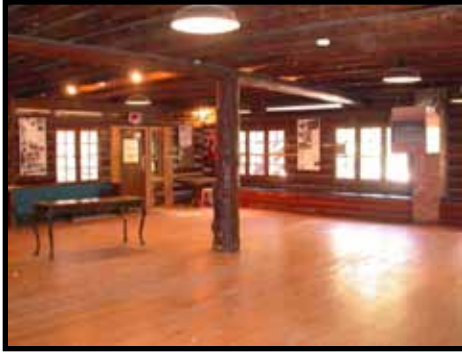
The Spirit of Volunteerism is Found in Friends

The WMC Foundation needs your help removing snow from the roof of the lodge this coming winter. Please check the WMC website [Activity Menu](#) for scheduled work parties. More information is available by contacting Robert Myers at (801) 466-3292 or robertmyers47@gmail.com. We generally start at the lodge by 9:30 AM. Carpooling is available. Lunch is provided for your help.



"We are never alone when we have friends and comrades; no obstacle or freak of nature can beleaguer us; we can find a way to overcome the difficulties before us."





THE WASATCH MOUNTAIN CLUB LODGE

Owned & Operated by the Wasach Mountain Club Foundation, a nonprofit 501(C)(3) organization,

The Wasatch Mountain Club lodge has a unique place in the history of the WMC Club, having been built by Club members in the late 1920's and enjoyed by the Club, community groups, and private parties through the years. This building, which is on the National Historic Register, is available to the general public. We encourage nonprofit, educational, scientific, enviromental, charitable and private groups to utilize this wonderful facility and its location in Brighton, Utah.

- You can help support the preservation of this historic structure by considering reserving the lodge for your use, or expanding the knowledge of its availability, to friends, associates and organizations with whom you associate
- For more information, go to our website at <https://wasatchmountainclubfoundation.org/>
- Current user fees for the building are \$460/night with a \$300 security/damage deposit

THIS ARTICLE IS PROVIDED TO THE GENERAL PUBLIC AND MEMBERS OF THE WMC AS A PUBLIC AWARENESS NOTICE



Winter Nominations Banquet & Social

January 7, 2012

This is a continuation of the long-running WMC tradition of having a sit-down dinner social event to coincide with the announcement of the slate of candidates for next year's Board and the close of the nominations process. Interest in a formal dress-up dinner and dance with live music was declined, so once again this year we are having a more informal, lower cost venue for casual socializing and a few brief speeches.

Meet at the Golden Corral Restaurant, 665 Fort Union Blvd, Midvale, Saturday, January 7th, at 6:30 PM. The WMC has reserved a private room separate from the main dining area. Your cost for the buffet is \$10.49 and \$1.99 for beverage for adults; \$9.49 for seniors, with beverage for \$0.19. Reservations are not necessary, just show up after your wonderful day of winter recreating in the Wasatch Front. Come and help continue this WMC tradition!

2012 GOVERNING BOARD NOMINATING COMMITTEE CANDIDATES

Most of the current directors are volunteering for another term. We are looking for a Social Director (or 2 co-directors). If you want to nominate yourself for any of the other positions, you are welcome to do so.

President	John Veranth	Incumbent
Secretary	Susan Allen	Incumbent
<u>DIRECTORS:</u>		
Treasurer	John Butler	Incumbent
Co-Directors	and Clark Richards	Incumbent
Rambler Editor	Kathy Craig	Incumbent
Boating	Don Urrizaga	Incumbent
Conservation	Will McCarvill	Incumbent
Foundation Liaison	Robert Myers	Incumbent
Hiking	Julie Kilgore	Incumbent
Biking	Beverly Hanson	New
Co-Directors	and Robert Turner	New
Information Tech	Bret Mathews	Incumbent
Co-Directors	and Eric Wiseman	Incumbent
Membership	Karen Perkins	Incumbent
Co-Directors	and Margaret Medina	New
Mountaineering	Nathan Schweitz	New
Public Relations	Donnie Benson	Incumbent
Social	Vacant	
Winter Sports	Walt Haas	Incumbent
Trustee 2012-2016	Gretchen Siegler	New

Contact the nominating committee listed below if you are interested in volunteering to serve on the WMC Board. It is a great way to get more involved with the Club.

Mark Bloomenthal	801-842-1242	markbloomenthal@yahoo.com
Ann Perry	801-860-8060	perrya15@gmail.com
Brad Yates	801-278-2423	bnyslc@earthlink.net
Lori Major	801-424-2338	lorimajor@yahoo.com

Thanks to these club members for being willing to serve on the committee.

In addition, the WMC needs to nominate two directors for the Wasatch Mountain Club Foundation Board.

If anyone wants to become more involved with the WMC they are welcome to volunteer (self-nominate) for governing board or coordinator positions. Nominations will be officially closed at the Nominations Banquet at the Golden Corral, 6:30 PM on January 7th, and a final slate will be published in February's Rambler. All candidates must be published in the Rambler and on the ballot. Write-in candidates are not allowed at the election meeting. The elections for the 2012 year will be at the February General Membership Meeting on February 7th, and the new officers and directors will take over in March.



WMC Purpose

(Article II of the WMC Constitution)

The purpose shall be to promote the physical and spiritual well-being of its members and others by outdoor activities; to unite the energy, interests and knowledge of students, explorers and lovers of the mountains, deserts and rivers of Utah; to collect and disseminate information regarding the Rocky Mountains on behalf of science, literature and art; to explore and picture the scenic wonders of this and surrounding states; to foster awareness of scenic beauties; and to encourage preservation of our natural areas including their plant, animal and bird life.



BOATING DIRECTOR'S MESSAGE

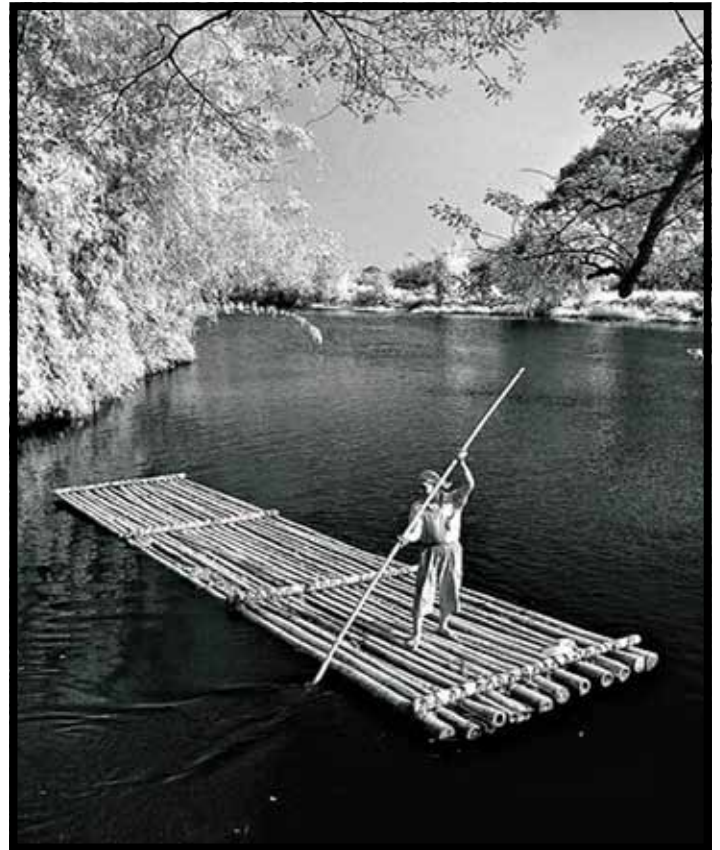
Don Urrizaga

BOATING PERMIT AND PIZZA PARTY

Once again, no sooner did we get the gear cleaned and organized and the boats rolled out, semi-inflated, and stacked up in the shed, it's time to start thinking about the upcoming 2012 season.

"The club has an OUTSTANDING history of boating trips with both the equipment and experienced river runners to make it one of the club's most popular programs."

It's time to get together to discuss rivers, trip options, trip organizers, to fill out and submit permit applications, and attain our fair share of the river permits issued to Utahans. All WMC members are invited. We are going to get a slew of permits and make this the most successful year on record. You are encouraged to bring blank permit applications (see the boating website for details as to how to access them) and a checkbook. Be sure to sign up for the club's boater email notification system by sending a SUBSCRIBE message with your name and address to Bret Mathews bretmaverick999@yahoo.com.

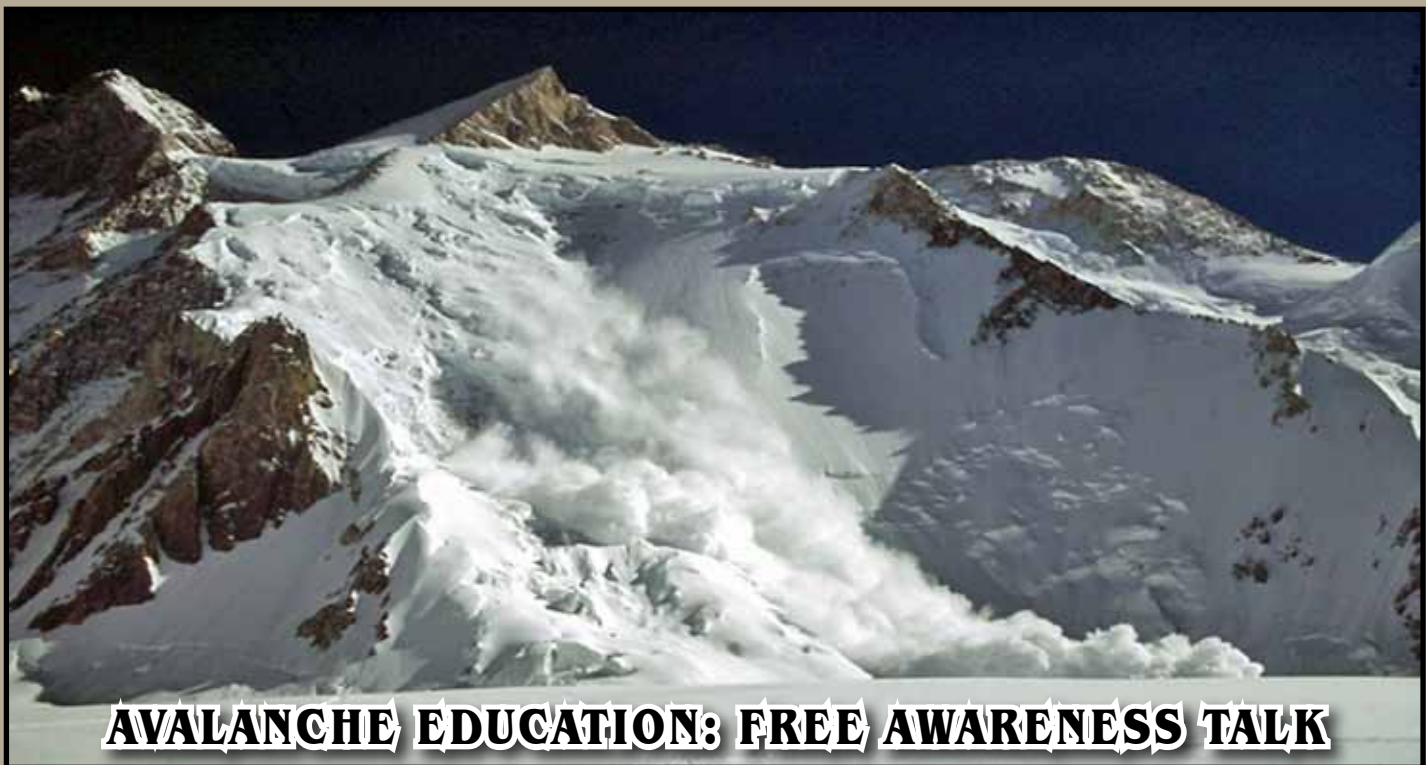


When: Thursday, January 19, 2012, 6:30 PM

Where: Rocky Mountain Pizza, 3977 South Wasatch Blvd. – Salt Lake City, UT

Who: All WMC members are invited

What: The pizza is on us - beverages are on you



AVALANCHE EDUCATION: FREE AWARENESS TALK

This multi-media talk has an exciting 15-minute video on avalanches, plus a half-hour PowerPoint on how to stay alive in avalanche terrain including terrain, snow stability, safe travel and rescue. Subjects include: avalanche rescue, how avalanches work, reading avalanche terrain, obvious clues to instability, avalanche weather, safe travel practices and essential equipment. This talk is presented by the staff of the Utah Avalanche Center, who are some of the foremost avalanche experts in the country.

When: Wednesday, January 11, 2012, 7:00 p.m.

Where: Sprague Branch Library, 2131 South 1100 East, Salt Lake City

Contact: Walt Hass, 801-209-2545, haas@xmission.com for further information

HISTORY OF SKIING IN THE WASATCH

Tuesday, January 31, 2012, 7 p.m.

REI, 3285 East 3300 South

ALEXIS KELNER, long time member of the Wasatch Mountain Club, is a noted ski historian and one of the modern pioneers of backcountry skiing in Utah. He is the author of *Skiing in Utah: A History* and co-author with David Hanscom of the backcountry skiing guides *Wasatch Tours I*, *Wasatch Tours II* and *Wasatch Tours III*. Alexis is an avid conservationist committed to protecting the beautiful mountains of Utah. He has a keen knowledge of the Wasatch and brings a unique perspective of skiing in Utah and its interesting history. Alexis is a founder of Save Our Canyons and has been an active board member of the WMC. This presentation is arranged by the Alta Historical Society as part of their Fireside Chat series.

GENERAL MEMBERSHIP MEETING

GOVERNING BOARD ELECTIONS

TUESDAY, FEBRUARY 7, 2012, 7:30 PM

**MT. OLYMPUS PRESBYTERIAN CHURCH
3280 EAST 3900 SOUTH
SALT LAKE CITY**

Peace of Mind!

When peace of mind is important and it's time to buy or sell, give me a call. You will be in "Good Hands" when you use Knick for your real estate needs.

Knick Knickerbocker, GRI



Email: **knick.sold@comcast.net**

Cell: **(801) 891-2669**

**C|R CHAPMAN
RICHARDS
AND ASSOCIATES**

1414 E. Murray Holladay Rd
Salt Lake City, UT 84117

A LITTLE ABOUT US . . .

The Wasatch Mountain Club was incorporated in 1920 by an informally organized group that had been hiking together for several years. The original Club charter listed the purpose as:

- to promote the physical and spiritual well being of its members and others by outdoor activities;
- to unite the energy, interests and knowledge of students, explorers and lovers of the mountains, deserts and rivers of Utah;
- to collect and disseminate information regarding the Rocky Mountains in behalf of science, literature and art;
- to explore and picture the scenic wonders of this and surrounding states;
- to foster awareness of scenic beauties; and

The Wasatch Mountain Club is an outdoor recreation club for adults. Club activities include:

- hiking, backpacking and camping,
- flat and whitewater kayaking, canoeing and rafting,
- mountain and road biking,
- rock and ice climbing, canyoneering and mountaineering,
- snowshoeing,
- Nordic & Alpine backcountry skiing,
- social/entertainment activities/programs and
- conservation pursuits.

While most activities are aimed at adult participation several activities for families are organized each season. Activities are not limited to the above list, but are dependent on volunteer organizers to form the activities and programs.

The club organizes scores of activities each month. Activities are open to all members. Some activities require advanced sign-up while others just state a date, time and meeting place. Trips may range in length from a few hours to several days. Most trips are centered in or around the Wasatch Front. Occasionally there are trips to other regions of Utah or to neighboring states. The sailing trip destinations have had varied locations such as the Greek Islands, Caribbean locations and the South Pacific.

The Wasatch Mountain Club provides a social vehicle to the outdoor enthusiast who seeks others of similar interests while providing an opportunity to develop organization skills and knowledge of the various outdoor sports. Whether you are a novice or an expert, there are trips and activities designed for you. If there is some question about the difficulty of the activity, a call or email to the trip organizer will fill you in on more information.

The Wasatch Mountain Club is run entirely by volunteers. Participants are expected to help with the organization and formulation of the trip. A great experience can be had in the outdoors. Your experience with the Wasatch Mountain Club will be as great as you make it.

WHEN'S THE
Last Time You
GOT GOOSE BUMPS
When Looking
OUTSIDE YOUR
OFFICE WINDOW?

WHEN'S THE
Last Time You Called In Sick
ON A POWDER DAY?

WE KNOW
Life Gets Tough
NEVER FORGET
What Makes You Happy



WE MAKE SKIS
Because We Love Skiing
VIICESKIS.COM





Utah's first Green body shop

26 years of making
customers happy.

Schneider
AUTO KAROSSERIE
BODY & PAINT

1180 S 400 W, SLC
801.484.9400
Mon-Fri 8:30 to 5:30
www.schneiderauto.com



Thank You

Thank You

Thank You

Thank You

Thank You

Thank You

Thank You

Thank You

Thank You

Thank You

Backcountry Volunteers & Trail Maintenance

Chris Ghicadus

Thank You

Thank You

Thank You

Thank You

Denis Davis' Escalante Canyon, Arches and Flash Floods Backpack

October 2-6, 2011



Backpacking in the Escalante River

Four of us rendezvoused at the Escalante River Trailhead on UT Highway 12. It was the first week of October, a perfect time for backpacking in the canyon country. Highway 12 is a Scenic Byway offering breathtaking views on Boulder Mountain of the fall aspen colors, and expanses of slickrock country in Escalante Grand Staircase National Monument. This simply wetted our appetite to shut off the car engine and begin our backpack adventure.

We drove a few more miles to the Phipps Canyon trailhead and headed off across a sandy route, negotiated a way down a cliff escarpment, and on to a descent over ribbed sandstone slopes. The smell of cedar and rabbit brush in bloom followed us. Farther down Phipps Wash were large potholes filled with water and the rock wash bottom dropped into a sheer cliff where only the raven could continue. We found a

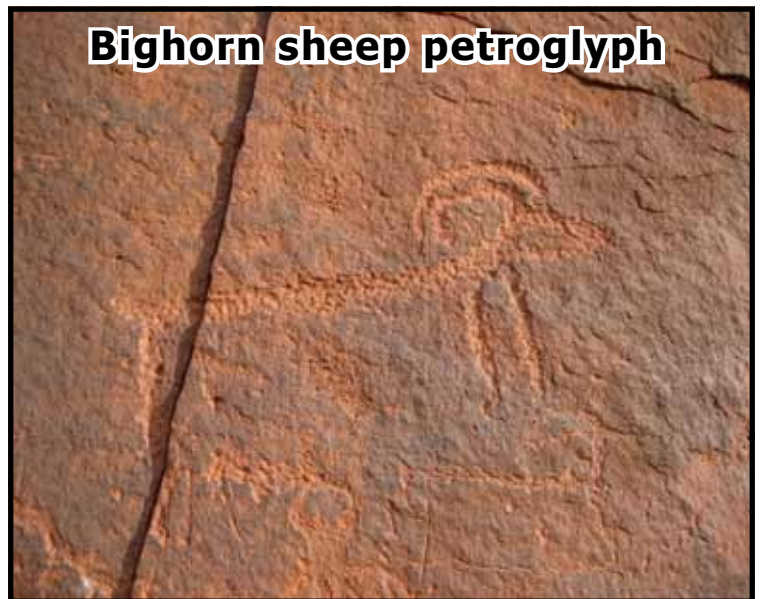
gnarly path around the cliff and continued on for miles of beautiful canyon. Our first camp was near the Escalante River. Lightning and thunder in the distance over Boulder Mountain put us to sleep.

Water in the Escalante was usable when filtered or treated, but the night's storms had filled the river with silt that made it virtually unusable the next morning. We had to find a spring or side stream with clearer water. We had a delightful backpack down the Escalante Canyon, in and out of the river, following paths, wading in the river, cutting meanders of the river, in and out, on and on. Camp was near the confluence of Boulder Creek, which gave us good quality water again. The Escalante was still heavily laden with silt.

This was one of the few areas where you could negotiate the sandstone up to the top for splendid views of the Escalante and Boulder Creek drainages. There was still quite a variety of flowers in bloom and the humming birds were still around. A Coopers Hawk shot by and a wing feather found later would decorate one of our hats. A gopher snake was surprised by us out in the open and a quarter sized orange, white-and-black jumping spider was interesting to follow.

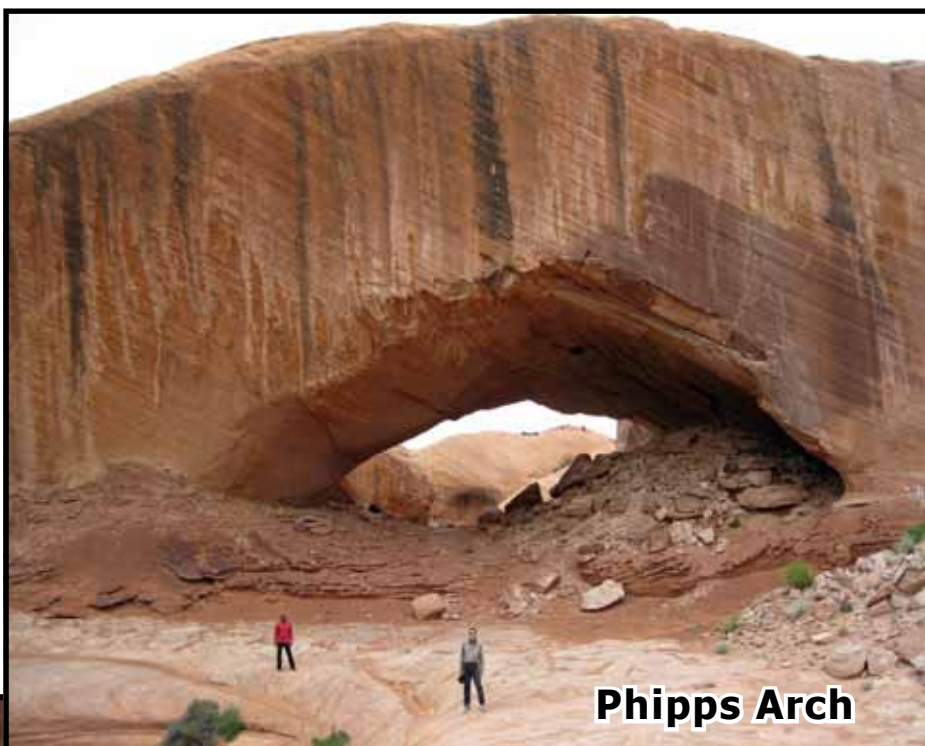
We headed back upstream for half a day to where a major side canyon comes in on the north. It had backyard swimming pool sized plunge pools full of water, so the silty Escalante was no problem. By our camp and up the side canyon were pictographs and petroglyphs.

Bighorn sheep petroglyph



One was a long line of people - a migration perhaps? One was clearly a breech birth, and all offered mystery in speculation about what story the artist was telling. Up the side canyon was a fine arch. We wished we had more time to explore this canyon.

The next day took us up the Escalante and back up Phipps Canyon. We stopped in the lower reaches of the canyon where there were some potholes of clear water, and found a house sized alcove for camp. We spent the afternoon hiking up to Phipps Arch, a large arch in an area of alcoves, domes, and arching rock that will be arches in the future. We looked for a natural bridge, but determined that the USGS quad did not show it in the correct location (confirmed by some guide books after the trip was over).



Phipps Arch



Camping in our nice dry alcove

We snuggled down for the night in our dry alcove as it began drizzling and later raining hard. About 4 a.m. a roar of what sounded like wind or a train woke us. It was a flash flood rushing down the canyon, easily four feet deep. Our dry alcove was well above the canyon bottom and we were pleased to have it as our shelter.

By morning the water level had receded, but there was still a silty flow. Fortunately, we had collected water from the pothole the night before and had plenty for the day ahead. It was clearly colder and there was a wind, but it cleared and was sunny. We headed up Phipps Wash,

retracing our steps from five days earlier. As we gained elevation up on the expanses of ribbed sandstone, we could see that the night's storm had covered Boulder Mountain and the Henry Mountains with a bright white blanket of snow.

I hope others will join me on future trips in the Escalante and elsewhere in the canyon country.

Photos by Denis Davis



COME

OUT

AND

JOIN

US

FOR

SOME

WINTER

FUN

IN

THE

MOUNTAINS!

Dick Dailey getting ready to head out on the trail

**Robert Turner's
Broads Fork
Snowshoe**

Robert Turner

*Photos by
Robert Turner*

**Upstream from the bridge,
which was our turnaround point**

December 4, 2011

Dick at the trailhead

**Dick looking
back down
the trail from
just across
the bridge**



Shane and Jacqueline Bode's

Shane: Snow conditions were better than expected with about 2 to 3 feet of nice powder. We had a spectacular ridge run to the top of Greens, then looped around to the east ridge and down to the meadow for the trip down. Participants: Shane, Jacqueline, Deirdre, Mohamed, Fred, Mark Gibby and Leslie.



Photos by Shane Bode

November 19, 2011



Upper Greens Basin via the West Ridge Snowshoe





Mike Berry's

Iron Mine Mountain
Nordic Ski Tour
(Uintas)

**A cold day in the Uintas -
Sharon Vinick on ski tour**



**Sharon Vinick
and Judy
Zachary above
10,000 feet**



Mike Berry on
the summit of
Iron Mine Mountain

Photos by Mike Berry

Vince Desimone's Tuesday's at Park City Snowshoeing

Cheryl: December 6, 2011, we snowshoed the new Armstrong Trail near Park City Mountain Resort, past some old mine buildings, and stopped for a break overlooking the Thaynes and King Con areas of the PCMR. Most of the group turned back after the break, but three of us continued to the top of the Armstrong Trail, then took the Mid-Mountain Trail to Iron Mountain. From there we bushwacked

**December 6, 2011,
Dave Sturgeon and Mike Gibby**



November 22, 2011, Barb Hanson

down the ridge and finally joined the Iron Canon Trail to hike out. The day was sunny and crisp, and we all had a wonderful time. (Cover photo is from this snowshoe, plus photo on this page). Other photos are from snowshoeing at Deer Valley before the resort opened for the season.

November 29, 2011, Mike Cloutier



**November 29, 2011,
Sandy and Hope Meleville**



Photos by Cheryl Soshnik

from the **editor**

Participation in any WMC activity can be dangerous. It is your responsibility to evaluate your own preparedness and ability to safely participate in any activity. Please be sure to read and re-read the release forms in the back of this publication, as well as on the sign-up sheets at the beginning of each activity!



NEW MEMBERS

Anne Friedman

Colette Levesque

James Humphreys

Julia Hart

Kellen Murphy

Misty Kirk

Lisa Smith

Jennifer Seelig

Thomas Shaw

Mike Bodily

John Rice

Shirley Ala

Scott and Aubreona Knuteson

Rick and Vonda Buhl

Casey Abernethy and Kasie Hall

Cynthia Becker and Joshua Markham

Brian and Leslie Hill

Scott and Margaret Madsen



WELCOME



IF YOU'RE A NEW MEMBER . . . depending on your age and background . . . you might have a few questions:

- 1. How do I get involved in activities?**
- 2. What kinds of activities can be organized?**
- 3. What is the average age of WMC members?**
- 4. How many people participate in the activities?**
- 5. How aggressive are the various activity groups?**

The answers . . . ask away! Ask someone in the club! Send an e-mail to wasatchmountainclub@gmail.com or call someone from the governing board (inside front cover). The average age is... honestly, we don't know. Why don't we know? 1. We haven't yet started tracking that information. 2. It doesn't matter. There are older folks who can out-hike/-bike/-paddle any younger person. There are also younger people who like to do light activities. Sometimes tons of people show up for activities; sometimes only a couple. This is the nice thing.

The WMC activities allow for flexibility; if you can show up, do--if you can't, don't. As for how vigorous and aggressive the various activities and groups are (hikers, bikers, etc), contact the director or coordinator. Please don't feel like you can't organize an activity if you don't know your way around. There are so many people who can help you, and you can even decide on a destination at the time of meeting! You might have one or two awkward activities, but just get together with people who share the same interests as you, and you'll be on your way to tons of fun and excitement--things you never thought were possible!

KAREN PERKINS'

POWDER PARK ONE SNOWSHOE



November 20, 2011



Shane: The snowshoe to Powder Park One was outstanding and I have been sworn to secrecy by Leslie and Karen about this wonderful place. The weather was perfect and the snow conditions were excellent. Mohamed and I accompanied a pack of 8 women to the the top. Those on the snowshoe were Shane Bode, Mohamed Abdallah, Jacqueline Bode, Deirdre Flynn, Vicky Ashby, Leslie Woods, Karen Perkins, Carol Masheter, Teresa Latte and Jennifer Edgar.



Photos by Shane Bode

Jim Piani's

Jim and Dan making
their way through
the trees

Snowshoe to Dog Lake

Almost to the top of the hill

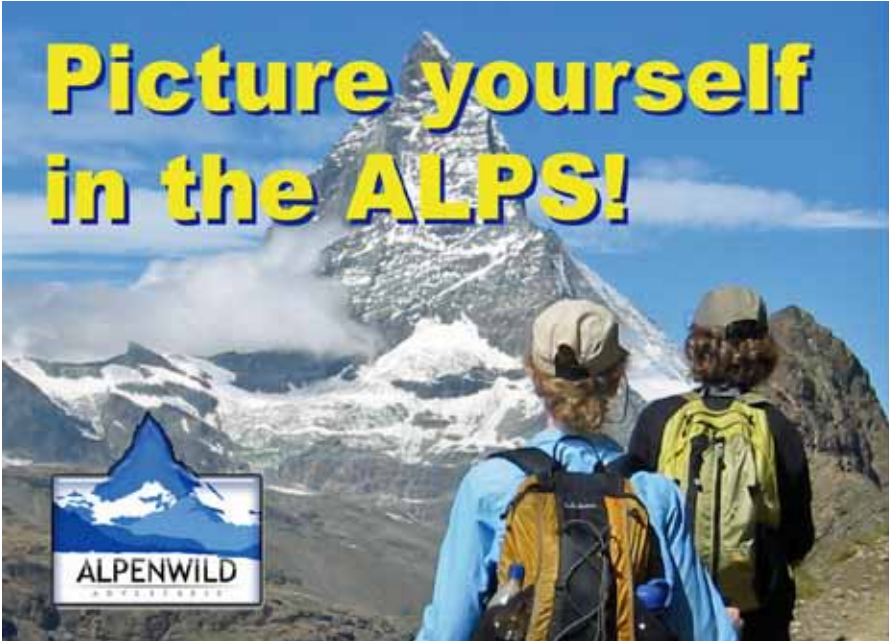
December 3, 2011

A snow covered Dog Lake

**Barb, Gretchen and Mark at
the Meadow above Dog Lake**

**Participants: Mark Jones,
Barb Hanson, Norm Pobanz,
Leslie Woods, Dan Clark,
Michael Mauritz, Gretchen
Siegler and Jim Piani**

Photos by Michael Mauritz



**Picture yourself
in the ALPS!**

*Alpenwild gives
you the best of
the Alps*

- Expert Guides
- Top Itineraries
- Great Values

www.alpenwild.com
800.532.9488



THE DATA CENTER - WORLD WIDE

*You can count on
The Data Center - World Wide
For all of your print and mail needs.
...from concept...to mail...to response!*

♦ Print & Mail Specialists	♦ Critical Documents	♦ Bar Coding
♦ Full Service Mailings	♦ Billing Statements	♦ Address Correction
♦ Company W2/1099 Forms	♦ Medical Statements	♦ Check printing
♦ Direct Mail Marketing	♦ Financial Statements	♦ ...And Much More

801-978-1030 * 1827 S Fremont Dr., SLC UT

MARKETPLACE

This space is reserved for those members placing ads for used and recreational gear or for private and non-commercial and not-for-profit activities. To submit an ad, e-mail it to wasatchmountainclub@gmail.com by the 10th of each month prior to publication. Non WMC members \$5.00 up to 20 words, \$0.20 per additional word.

SNOWSHOES FOR SALE, NEW MSR
vincedesimone@yahoo.com 435-649-6805

REMEMBER: There is also a "Gear Swap" area online where you can post what you are looking for, or place something that you want to sell or get rid of. It seems to be more up-to-date most of the time, due to the hard copy of the Rambler only being produced once a month.

LAUREN WALTERSCHEID
MASTER AESTHETICIAN

Tangles
Salon & Day Spa

7076 S. (Highland Dr. 2000 E.)
801-424-2724

\$15 Spray Tan
\$40 Mani & Pedi
\$15 Brow & Lip Wax
Valid only with Lauren



Mention this ad and receive 20% off any skin care services

ASAP TREE SERVICE....LOW PRICES

- ★ Tree & Stump Removal
- ★ Pruning & Shaping
- ★ Shrubs & Hedges
- ★ Professional Planting
- ★ Junk Removal
- ★ Storm Damage Cleanup
- ★ Discounted Winter Rates

Over 12 Yrs Experience
Licensed & Insured



Text or Email Photo
For Instant Quote



Dennis Craig - Owner
SERVICE 7 DAYS A WEEK

FREE HONEST ESTIMATES

801-260-1900

asaptreeslc@gmail.com



Snowshoeing has been around for hundreds of years. It is a great way to keep yourself active during the winter season if you're not the really sporty type. It's a great way to keep the extra pounds at bay and is very therapeutic in a sense because the activity is very peaceful and relaxing. Our beautiful Wasatch Mountains have some of the most exciting snowshoeing areas in the country; virtually in every corner you can find a great place to explore via snowshoeing. If you love snow but don't want to overexert yourself, snowshoeing is a great way to spend time with the snow.

The only skill required for this activity is the one you've been able to master for years, walking. Snowshoeing is one of the simplest and effortless sports for everyone. It's a perfect way to cut yourself away from the world. All you need are great snowshoes, snacks to keep your energy up, and water or high energy drinks to hydrate you. Also, remember to bundle up in the most comfortable and warmest clothing you have and snowshoe away.

Snowshoeing is one of the most popular low impact sports. It can be done with any age group and is a very relaxing and peaceful sport, and it is also an activity that makes you experience nature closely. So make sure you bring your camera to capture funny and unforgettable moments in the snow, or the unexpected delight of encountering an elk or the occasional rabbit and other wildlife in your walk.

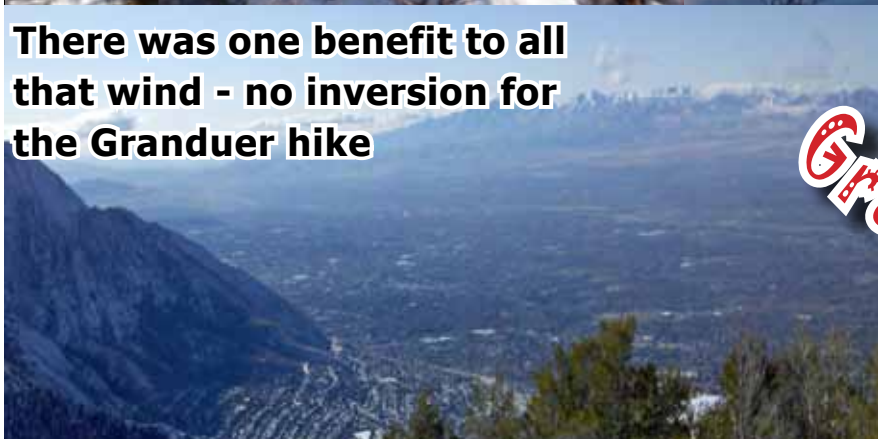
The group had a beautiful day and a nicely packed trail for the steep ascent up the west side of Grandeur



There is a big difference between the snow conditions on the north slope off Grandeur Peak and the south facing slopes of Parleys Ridge



There was one benefit to all that wind - no inversion for the Grandeur hike



*Julie Kelzore's
Grandeur Peak Hike*

*Photos by Brett Smith
and Sam Cannon*

December 3, 2011

**At the peak! L-R:
Cheryl, Robert, Sam,
Steve, Russell, Carol,
Fred and Julie**

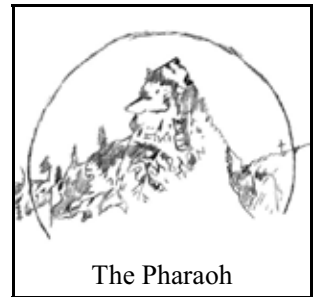


FAINT TRAILS IN THE WASATCH

60 Pharaoh's Glen – Parleys Canyon

When traveling through Parleys Canyon on I-80 today it hardly seems possible that people would care to camp there for the sheer pleasure of doing it. However, long before the canyon made way for modern highways, it was a very desirable place to go. Traveling with team and wagon, valley residents went up there to camp overnight, for a weekend or longer. Much of it was to escape the mid-summer heat in the city; in July 1887 it was reported that Parleys Canyon was fairly lined with Salt Lake people who were camping out during the hot weather. When the Park City railroad was built in 1888 - 1890, making the canyon much more accessible, it was inevitable that resorts would be opened to cater to pleasure seekers. The Mountain Summit Resort, located a short distance below Lambs Canyon, was in operation in 1890 and was open until the turn of the century. The train would stop to disembark passengers there. In 1901 Leonard Hardy was planning to build the Birch Grove Summer Resort at Mountain Dell, including a fifty room hotel. It is unlikely the hotel ever went beyond the talking stage, but as late as 1905 the resort was offering splendid camping grounds and "alpine climbing." In 1905 Felt's Resort was located midway between Mountain Dell and Lambs Canyon, a popular place for cottagers and picnic parties, with a dancing pavilion, shady walks and quiet nooks. The Old Log Cabin at Mountain Dell was not a resort, but rather a place where campers in the canyon could gather for dancing. It likely was one of the buildings from the Mountain Dell community that still remained in 1901. All these focal points of entertainment had their days numbered, not because of lack of patronage, but rather because Salt Lake City wanted to protect its source of water and wanted them off the watershed.

Mount Aire canyon, about two miles below Mountain Dell, was the site of the Old Armchair Resort. It opened in 1900, at a time when Mount Aire canyon was still known as Smiths Fork. The resort took its name from a limestone formation near the head of the fork that looked like an enormous armchair. A number of private residences had been built, but there were cabins and campsites available for vacationers and pleasure seekers. Many woodland lanes and trails awaited the walker, and guides and saddle horses were provided for the riders. Hikes to the Old Armchair or to Dragons Head and Pine Top peaks were featured. All facilities were named, but since so many names were quoted it is suspected they were renamed each year. The round trip railroad fare to Old Armchair was sixty cents. The resort ran for six years until, in 1906, the gates were closed and the canyon was dedicated to the pleasures of the private property owners. The tract was renamed MountAir, which had been the name of one of the cabins at Old Armchair, later to be spelled Mount Aire. In 1906 the canyon was still called Smiths Fork, but after that time it became Mount Aire Canyon, and the peak at the head of the canyon, which before then was Dragons Head, became Mount Aire.



Another mile below Mount Aire Canyon is another drainage that became known as Pharaoh's Glen. If early travelers through the canyon were aware of its existence, they made no mention in the many journals they left behind. It finally received some attention in 1883 when a group of six men filed an equal number of claims in the immediate area with the intent to quarry sandstone for use in the building trades. One of the natural features on their claims was a stream that cascaded down the steep slopes, creating some impressive waterfalls and lovely pools. The brother of one of the claimants, George F. Culmer, was Henry L. A. Culmer, the noted and much acclaimed local artist. It was the latter who made a painting of one of the higher falls and placed it on display in his gallery in the city, thereby drawing attention to this scenic spot. Being adjacent to the stone quarry, the falls quite naturally were called Quarry Falls, probably named by the artist himself, a man who assigned more than a few names to features in the Wasatch Mountains. The drainage in which the falls were located became known as Jump-Off Canyon.

By 1888, when the railroad was under construction in Parleys Canyon, a road had been built up into Jump-Off Canyon to the quarry and several cabins had been constructed. Although the place had received some publicity, it did not appear to receive attention from the pleasure seekers or campers seeking relief from the summer heat in the city, possibly due to its being totally hidden from the canyon road. About that same time the rock company abandoned the quarries due to the rock being too hard to be profitably quarried, and in the mid-1890s other people stepped in, these being Rev. James D. Gillilan, pastor of the Liberty Park M. E. Church, Dr. Joseph Milliron, and their wives.

Dr. Milliron was a veteran of the Civil war, having served three consecutive enlistments during that conflict before entering medical school. He practiced medicine in Illinois for twenty years before moving to Utah in 1890. Rev. Gillilan came to Utah in 1883 as a member of the Utah Mission of the Methodist Episcopal church and spent most of the next decade in Tooele county. In 1892, when he was appointed presiding elder in Utah, he relocated to Salt Lake City, moving into a small home next door to the Liberty Park church, only half a block away from the residence of Dr. Milliron.



A group of students from Westminster College on an outing at Pharaoh's Glen, probably on 19 May 1916. Parleys Canyon is in the background. (Westminster College Archives)

It is not known how the two families became acquainted, but within a few years they were sharing adventures in Jump-Off canyon. Immediately the women gave the falls a new name: Silver Shower Falls. A towering pinnacle of rock adjacent to the falls had a profile that made it look like the Gnome of Parleys Canyon, or perhaps a Pharaoh. In December of 1896 the Salt Lake Tribune published a poetic article about the Pharaoh written by Rev. Gillilan, and the following year, 1897, the two couples filed the first of a series of placer claims, placing the Pharaoh and his glen in their control. Later that same year Mrs. L. L. Archer, active and prominent member of Salt Lake society, gave a party for her friends in the form of a picnic at Pharaohs Glen. The railroad company made a car available to the party, carrying them up to the glen and back to the city. Perhaps that gave the railroad officials an idea for more passenger revenue, because the next season the railroad advertised the Parleys Canyon resorts. It cost fifty cents to ride to Pharaohs Glen and back, and on Sundays bicycles were carried free if people wanted to cycle back into town.

In 1898, when the Rev. James Gillilan was reassigned to Idaho, he turned his share of Pharaoh's Glen over to the Milliron family, who now carried it forward alone. In 1900 the "Mrs. Dr. Milliron" advertised the Glen as the Sojourner's Mountain Home. It now had stone cottages, floored tents, space for those bringing their own tents, pure cold spring water and a first-class restaurant. In 1901 she began providing the newspapers with society notes, naming some of the

people staying there and describing what they were doing. The various cabins and camps were given names – Magpie's Nest, Shady Side, North Terrace, Horseshoe Lodge, Imogene Terrace, Paradise Found, Camp Gillilan and Brookside, to name a few. Also local features, in addition to the Pharaoh, were given names, like Queen Victoria, The Fisherman, and Observation Rock. The resort became very popular, many people visiting for a day, but some stayed for a week or even the entire summer. It was reported that 400 people had visited the resort over the Fourth of July holiday in 1906. Many pleasant memories were forged at Pharaohs Glen, but in April 1910 the gaiety came to an abrupt end.

On Friday, 22 April, Dr. Milliron and his daughter had been at the resort and left to ride back to the city in their horse-drawn buggy. He had taken a shotgun to shoot jackrabbits at the resort, and now was holding it between his knees. At a place where the canyon bottom was very narrow, with barely enough space for the road, the railroad track and the stream, a locomotive suddenly appeared coming around a blind curve. The horse took fright, reared and pushed the buggy backwards against the hillside, where it overturned. Just as the two occupants were thrown out the report of a gun was heard. The shotgun had discharged, killing Dr. Joseph Milliron instantly. The engineer stopped the locomotive and the girl, who suffered injuries in the accident, was taken aboard to be carried to Sugar House where she received medical attention. When Dr. Milliron was buried in Mount Olivet cemetery several days later, the fate of the Pharaohs Glen resort was buried with him. No longer was it advertised in the newspapers, nor did it appear in the society columns. From all appearances Dr. Milliron's survivors turned their backs on the property and abandoned it.

But a pleasant site like Pharaoh's Glen doesn't simply disappear, especially when it was known by so many who had enjoyed it in the past. It certainly received visitors in the years that followed, albeit in a less formal environment. One visit that did receive a modicum of publicity was an outing by a group of students and faculty from Westminster College in May of 1916. It was reported about one hundred "young people left on the 9 o'clock Denver & Rio Grande train and enjoyed luncheon, games and climbing parties during the day." Presumably they returned to the city on the evening train.

The interstate highway, I-80, that was built through the canyon in the 1960s made sites like the Pharaoh's Glen much less accessible, causing them to be soon forgotten. However, in recent years the glen, under new ownership, has been extensively reworked and given the name of Rose Sachs Gardens, a pleasant venue created to host weddings and other receptions.

MARK MCKENZIE'S

**POWDER PARK
SNOWSHOE**

December 4, 2011

*Photos by
Mark McKenzie*

**L-R: Chuck Klingenstein,
Vickie Ashby, Mark
McKenzie, Erin
McCormack, Dave
Andrenyak, Shane
Bode, Jackie Bode,
Knick Knickerbocker
and Deidre Flynn. Not
in picture: Mohamed
Abdallah and Leslie
Woods.**



*'Do not go where the path may lead,
go instead where there is no path
and leave a trail'. Ralph Waldo Emerson*





SAFE BACKCOUNTRY SKI TRAVEL TECHNIQUES

One at a time. There always needs to be someone left in a safe spot to do the rescue. Never put everyone on the slope at once. With large groups, split them in half and stay in visual and voice contact.

Have an escape route planned. Always think avalanche. What will you do if you trigger an avalanche? Have a plan first.

Use slope cuts. Keep your speed up and cut across the starting zone, so that if you do trigger an avalanche, your momentum can carry you off the moving slab into safer terrain. You can do this on skis, snowboards or on snowmobiles.

Watch out for cornices. They always break farther back than you think. Always give them a wide berth. NEVER, NEVER walk out to the edge of a drop-off without first checking it out. Many people have needlessly died this way.

What are the alternatives? Use terrain to your advantage. Follow ridges, thick trees and slopes with safer consequences. You can almost always go back the way you came. The route got you there; it will most likely get you back as well.

If there's no other choice, go underground. You can almost always weather out a bad storm or bad avalanche conditions by digging a snow cave in a protected area. You may be uncomfortable but you will be alive. (From the Utah Avalanche Center web site: www.avalanche.org)

Wasatch Mountain Club (WMC)

Applicant Agreement, Acknowledgment of Risk, and Release from Liability

Activity: _____ **Organizer:** _____ **Date:** _____

VOLUNTARY PARTICIPATION: I acknowledge that my participation in all WMC activities is voluntary. No one is forcing me to participate. I agree to abide by the rules of the WMC.

ASSUMPTION OF RISK: I am aware that WMC activities involve risks, and may result in injury, illness, death, and damage to or loss of property. These dangers include but are not limited to: the hazards of traveling in remote areas without medical services or care, the forces of nature, the inherent dangers involved in participation in sports, wilderness travel, and social activities, and the negligent actions of other persons or agencies. I understand that all activities should be considered exploratory, with the possibility of unexpected conditions and route variations. The WMC is not, nor does it provide, a professional guide service. In order to partake in the enjoyment and excitement of WMC activities, I am willing to accept the risk and uncertainty involved as being an integral part of the activity. I acknowledge this risk, and assume full responsibility for any and all risks of injury, illness, death, or damage to or loss of my property.

PREPARATION: I understand that it is my responsibility to evaluate the difficulties of any WMC activity I participate in and decide whether I am prepared by having the experience, skill, knowledge, equipment, and the physical and emotional stamina to participate safely.

RELEASE OF LIABILITY AND PROMISE NOT TO SUE: I agree that I, my heirs, personal or legal representatives hereby do release and hold harmless from all liability, and promise not to bring any suit or claim against the WMC, its activity organizers, directors, agents or representatives for any injury, illness, death or damage and loss of property resulting from my participation in any WMC activity even if they negligently caused the injury or damage.

LEGAL FEES: Should it become necessary for the WMC, or someone on their behalf, to incur attorney fees and costs to enforce this agreement, I agree to pay the WMC reasonable costs and fees thereby expended, or for which liability is incurred.

INSURANCE: I understand that the WMC strongly recommends that I maintain insurance sufficient to cover any injury, illness or property damage that I may incur while participating in WMC activities. In the event of injury, illness or death related to any WMC activity, I recognize that I, or my estate, will bear the full cost of my evacuation or recovery, and any related medical care that I may need. I acknowledge that the WMC carries no insurance whatsoever for any participant in WMC activities.

My signature below indicates I have read this entire document, understand it completely, understand it affects my legal rights, and agree to be bound by its terms. I certify I am at least 18 years old.

****ATTENTION** IF YOU ARE NOT A MEMBER OF THE WMC, PLEASE NOTIFY THE TRIP ORGANIZER!**

<i>Member (Y/N)</i>	<i>Signature</i>	<i>Print Name</i>	<i>Phone</i>	<i>Check Out</i>
_____	_____	_____	_____	_____
_____	_____	_____	_____	_____
_____	_____	_____	_____	_____
_____	_____	_____	_____	_____
_____	_____	_____	_____	_____
_____	_____	_____	_____	_____
_____	_____	_____	_____	_____
_____	_____	_____	_____	_____
_____	_____	_____	_____	_____
_____	_____	_____	_____	_____
_____	_____	_____	_____	_____
_____	_____	_____	_____	_____
_____	_____	_____	_____	_____
_____	_____	_____	_____	_____
_____	_____	_____	_____	_____
_____	_____	_____	_____	_____
_____	_____	_____	_____	_____
_____	_____	_____	_____	_____
_____	_____	_____	_____	_____
_____	_____	_____	_____	_____
_____	_____	_____	_____	_____
_____	_____	_____	_____	_____

Return this form to Wasatch Mountain Club, 1390 South 1110 East, Salt Lake City, UT 84105-2443
Please mark attention to the appropriate activity director, e.g., hike, bike, boat.

WASATCH MOUNTAIN CLUB ACTIVITIES

Only activities approved by the appropriate WMC director can be listed in The Rambler. Direct submissions to the Editor are NOT accepted. To submit your activity to the club, login to the WMC website and click on “Volunteer to Organize An Activity”. The appropriate director will approve and/or edit this event for inclusion in both the web calendar and Rambler submissions. The deadline is 6:00 p.m. on the 10th of the month.

Rules and Regulations:

1. **Dogs & Children** are not allowed on WMC activities, except when specifically stated in the activity description.
2. **Car pool rates:** Gas plus \$0.15/mile, shared by everyone in the vehicle (including driver) on 2WD roads, OR gas plus \$0.25/mile on 4WD roads.

Notice to Non-Members: Most WMC activities are open to prospective members except when specifically stated in the activity description.

Find out about unofficial activities on our email lists. Activities formed with these lists are for members only. Lists are to be used only for the scheduling of outdoor activities. Any use of this service for any other purpose, such as advertising, SPAM, jokes, etc, will result in the loss of privilege. To subscribe: Once logging into the website, click on “Email Lists” on the left-hand side. Then follow the online instructions. (Boaters: E-mail the Boat Director—inside front cover—for more information.)

Group size limits in wilderness: Some National Forest ranger districts limit the size of group hiking in wilderness areas. For such hikes, the hike listing will indicate the maximum number of participants (not including the organizer). Please help our organizers on hikes with group size limits by arriving promptly and being understanding if you cannot be accommodated on the hike because of a limit.

Activity Difficulty Rating

0.1-4.0 > Not Too Difficult (NTD)	B > Boulder fields or extensive bushwhacking
Lightly Strenuous	E > Elevation change > 5,000 feet
4.1-8.0 > Moderate (MOD)	M > Round trip mileage > 15 miles
Moderate to Very Strenuous	R > Ridgeline hiking or extensive route finding
8.1-11.0 > Most Difficult (MSD)	S > Scrambling
Very Strenuous, Difficult	X > Exposure
11.1+ > Extreme (EXT)	W > Wilderness area, limit 14
Very Strong, Well-Seasoned Hikers	

Be kind. When you carpool up local canyons, please give the driver \$1.50 or \$2.00 to help with gas and the wear and tear on the vehicle.

Directions to Meeting Places

Mill Creek Canyon Park and Ride Lot: Between 3800 S and 3900 S on Wasatch Blvd (3555 E), between the I-215 freeway and Wasatch Blvd along 3900 S. It is on the northwest corner of the intersection. You can ONLY enter it from the west-bound lanes of 3900 S. To get to the Mill Creek Canyon Rd from the Park and Ride lot without making a U-turn, go west (right) on 3900 S, proceed under the freeway, then turn north (right) at the next available street, which is Birch Dr; proceed north to Upland Dr (across from Skyline High School); go east (right) under the freeway and across Wasatch Blvd to the Mill Creek Canyon Rd (3800 S).

Skyline High School: 3251 E Upland Drive (3760 S). From the intersection of Wasatch Blvd and the Mill Creek Canyon Rd (3800 S), go west under the I-215 freeway, then turn north (right) into the entrance opposite Birch Dr (3330 E).

Butler Elementary: 2700 E just south of 7000 S

Big Cottonwood Canyon Park and Ride Lot: At the northeast corner of the Big Cottonwood Canyon Rd and Wasatch Blvd. at the mouth of Big Cottonwood Canyon.

6200 Park and Ride Lot: 6450 S Wasatch Blvd. Go two lights east and south on 6200 S from the I-215 overpass and turn east (left) onto Wasatch Blvd; the lot is immediately on your left. Sometimes used as an overflow lot for access to Big Cottonwood Canyon.

Ft. Union Lot #4: 200 yards west of Big Cottonwood Canyon Park & Ride, near the Porcupine Pub & Grille (which is located at 3698 Ft. Union Blvd).

Little Cottonwood Canyon Park and Ride Lot: 4323 E Little Cottonwood Canyon Rd. On the north side of the intersection of Little Cottonwood Canyon Rd and Quarry Rd at the mouth of Little Cottonwood Canyon.

Utah Travel Council Parking Lot: About 120 E 300 N. Go east from the intersection of State St and 300 N and turn south (right) into the first parking lot.

Parleys Way K-Mart Parking Lot: 2705 Parleys Way. From Parleys Way, turn north into the parking lot; or from Foot-hill Drive, turn west on Stringham Ave (2295 S) and then south into the lot.

ACTIVITIES LISTING

See online Calendar for updated and additional events and trips

Date Activity

- Jan 1 Sun Snowshoe - Dog Lake – ntd+ – 4.0 mi – 1400' ascent**
Meet: 9:00 am at 6200 South & Wasatch Park & Ride
Organizer: David Andrenyak 801-582-6106 andrenyakda@aim.com
 A wonderful trip to start 2012. If conditions permit, I suggest that we travel a short way up the low angle slope north and east of Dog lake for some great views. Please remember to bring the 10 Es and avalanche safety equipment. Lets plan to meet at 9:00 am for a 9:15 am departure.
- Jan 1 Sun Nordic Ski Tour: Beaver Creek Trail (uintas), El-ntd – ntd- – 5.0 mi Out & Back – 500' ascent – Slow pace**
Meet: Registration required
Organizer: Michael Berry 801-583-4721 mberryxc@earthlink.net
 The WMC offers a beginner or 'refresher' day on cross-country skis. The tour is designed for those who are new to the sport, or for anyone who has been away from it for awhile and would like to give 'XC' a try again. Pick up skiing skills on a relatively flat, easy track away from the crowds and in the gentle part of the Uintas. The scenery is a plus too. Instruction will be provided as needed, and ski gear tips given if you are interested in joining some NTD- MOD Uinta Tours. We will plan to stop at Kamas Coffee for a gear check and warm beverage on the way in. Carpool rate is usually \$5- \$10 per person. There is also a \$3 Mirror Lake Highway fee per vehicle if you do not have an annual pass. We will plan to meet in the Salt Lake Valley at 9:30 AM and be back by 4:30 PM. We will plan on 4 hours of skiing maximum. Participants can also return to the trailhead early. To register, volunteer to teach, discuss equipment and transportation, please contact organizer no later than December 29th (Also see 'Learn to Cross Country Ski' Clinic conducted by Jennifer Jackson, certified ski instructor and new WMC member/ organizer- listed for January 29, 2012).
- Jan 1 Sun Snowshoe: Exploratory Cottonwood Canyons – mod**
Meet: 9:00 am at 6200 South & Wasatch Park & Ride
Organizer: Teresa Latta poisonspiders@yahoo.com
 Joining Teresa Latta on her first time organizing a snowshoe. Listed as exploratory as she is new to organizing. She's considering something like Red Pine but will make the final decision based on the conditions for the day. Join her at 9am at the 6200 S Wasatch park and ride. Don't forget your 10 E's, beacon, probe and shovel.
- Jan 2 Mon Snowshoe: Lamb's Canyon – mod**
Meet: 9:00 am at 6200 South & Wasatch Park & Ride
Organizer: Shane and Jaq Bode 801 647-2917 shanejaq@q.com
 Shane and Jaq are going to head to Lamb's Canyon. Carpooling is highly recommended due to limited parking at the trailhead. If you haven't tried Lamb's on snowshoes - you're in for a treat! Bring your 10 E's, avalanche beacon, probe and shovel.
- Jan 3 Tue Alpine Ski Tour, Tri Canyons – msd**
Meet: Registration required
Organizer: Walt Haas 801-209-2545 haas@xmission.com
 TUE SKI BACKCOUNTRY: Weekly MSD (strenuous) ski tours, usually in the Tri-canyons. 8 AM starts. Good conditioning, appropriate gear and avy skills are essential. Call or e-mail Walt Haas Monday by 5 P.M. for meeting place. Newbies should call or mail ahead to discuss trip requirements.

- Jan 3
Tue **Snowshoe: Park City Environs Mod/msd**
Meet: 10:00 am at Disseminated via the snowshoe email list
Carpool: 9:15 am at Parleys Way former Kmart lot - 2703 Parleys Way
Organizer: Vince Desimone 435-649-6805 vincedesimone@yahoo.com
Vince will organize a Tuesday Group again this year. Meet at 10:00 AM every Tue and go to places in the Park City area where snowshoes are the best means of travel. Expect friendly conversation. For meeting location and last minute details, join the WMC snowshoe email list for automatic notices/updates for all Tuesday snowshoe trips throughout the winter. You will feel welcome and comfortable. Vince prefers cyberspace for questions/info. The club recommends that you wear a transceiver and know how to use it. Carpool from SLC from the Parley's Way Kmart parking lot at 9:15 am.
- Jan 3
Tue **Rock Climb - Fantastic Plastic @ Momentum – mod – 50' ascent**
Meet: 6:00 pm at Momentum
Organizer: John Butler 801-718-4166 john@utahman.com
Just ask for the Wasatch Mountain Club people at the front desk and they will point us out. Beginners welcome.
- Jan 5
Thu **Avalanche Education: Free Awareness Talk – ntd-**
Meet: 7:00 pm at REI Salt Lake City, 3285 E 3300 S
Organizer: Walter* Haas 801-209-2545 haas@xmission.com
This multi-media talk has an exciting 15-minute video on avalanches plus a 1/2hr. PowerPoint on how to stay alive in avalanche terrain including terrain, snow stability, safe travel and rescue. Subjects include: avalanche rescue, how avalanches work, reading avalanche terrain, obvious clues to instability, avalanche weather, safe travel practices and essential equipment. This talk is presented by the staff of the Utah Avalanche Center, who are some of the foremost avalanche experts in the country. Registration is strongly recommended. If you register for any of our free in-store presentations, we will hold a seat for you until the scheduled start. If you do not arrive to claim your seat before this time, we will release it to the general public. Seating may be available at the door, even if the registration is closed. Register at <http://www.rei.com/stores/19>
- Jan 5
Thu **Ski Meeting/social: Free Avalanche Awareness Talk – ntd-**
Meet: 7:00 pm at REI Salt Lake City, 3285 E 3300 S
Organizer: Walter* Haas 801-209-2545 haas@xmission.com
This multi-media talk has an exciting 15-minute video on avalanches plus a 1/2hr. PowerPoint on how to stay alive in avalanche terrain including terrain, snow stability, safe travel and rescue. Subjects include: avalanche rescue, how avalanches work, reading avalanche terrain, obvious clues to instability, avalanche weather, safe travel practices and essential equipment. This talk is presented by the staff of the Utah Avalanche Center, who are some of the foremost avalanche experts in the country. Registration is strongly recommended. If you register for any of our free in-store presentations, we will hold a seat for you until the scheduled start. If you do not arrive to claim your seat before this time, we will release it to the general public. Seating may be available at the door, even if the registration is closed. Register at <http://www.rei.com/stores/19>

- Jan 5 Thu Snowshoe: Thursday Snowshoe Ntd To – mod- – Out & Back – Moderate pace**
Meet: 9:30 am at 6200 South & Wasatch Park & Ride
Organizer: Robert Myers 801-466-3292 (H) or 801-651-9965 (C) robertmyers47@gmail.com
 Robert Myers will lead a Thursday group on a weekly snowshoe adventure. Difficulty is typically NTD to MOD. Sign up for the snowshoe email list on the WMC website to get more information on the planned trip each week. Meet him at the 6200 South & Wasatch Blvd. Park & Ride, in the South end of the lot. Departure time is 9:30AM
- Jan 6 Fri Moonlight Snowshoe Mod- – mod- – Out & Back**
Meet: 6:30 pm at Skyline High School - 3231 E Upland Dr (3760 S)
Organizer: Knick Knickerbocker 801-891-2669 Knick.Sold@comcast.net
 Meet Knick for this Organizer's Choice moonlight snowshoe tour. Exact location dependent on weather and safety conditions. Knick plans a fun evening in the moonlit snow. Meet Knick at Skyline High School to carpool by 6:30 pm. Dress warmly in layers and come prepared.
- Jan 6 Fri Nordic Ski Tour: Multi-day Tour To Amethyst/ryder Lake (uintas) – msd – 38.0 mi Out & Back – 3900' ascent –**
– Jan 8 Moderate pace
Sun **Meet:** Registration required
Organizer: Glen Mackey 540-529-4907 glen.mackey@gmail.com
 The trip begins Friday morning at the Mirror Lake Highway winter parking area 30 miles south of Evanston, WY. We will plan on setting up base camp somewhere in the Christmas Meadows area between the trailhead and the split in the trail (9-10 miles). On Saturday we will attempt to ski to Amethyst Lake or Ryder Lake. Depending on conditions we may try to ski to the other lake before breaking camp and heading back to the car on Sunday. Previous winter camping experience is recommended but not required. Proper winter clothing is a must. Temperatures can range from around freezing during the day to below zero at night. We will be tent camping, so a warm sleeping bag and sleeping pad is very important. I have a sled that we can use to haul heavy gear, but plan on bringing a large daypack that can accommodate gear for a full day away from camp as well as lighter items for the ski in to and out of camp. Lightweight backcountry touring gear with scales or grip wax is best; bring skins for steeper sections and for taking turns towing the sled. Most of the terrain is fairly low angle but avalanche gear is required. Snowmobilers keep a packed snow surface on the Mirror Lake Highway, but significant trail breaking is expected once we leave areas where they commonly travel. The Mirror Lake Highway is a fee area (\$3/car). Contact Glen to discuss the itinerary, gear for the trip, and transportation to the trailhead. Those coming from SLC should plan on departing early Friday morning for the 2-hour drive to the trailhead and expect to be back Sunday evening. If you are coming from a different origin we can work out a meeting point.
- Jan 7 Sat Alpine Ski Tour, Tele/at – mod – Out & Back – Moderate pace**
Meet: 8:30 am at 6200 South & Wasatch Park & Ride
Organizer: Will McCarvill 801-694-6958 lizandwill@msn.com
 Show and go skiing on a variety of MOD and MOD+ terrain. Exact location TBD. Beacons, shovels, probes, skins & tele or AT gear and knowledge of their use required. This is not a beginning tour. Must be comfortable with various snow and weather conditions. Duration 5-7 hours. Reasonable but steady pace. Maximum group size of 10.
- Jan 7 Sat Nordic Ski Tour: National Winter Trails Day And Tuna Demo Day**
Meet: 10:00 am at Soldier Hollow, Mountain Dell
Organizer: Soldier Hollow (435) 654-2002 info@soldierhollow.com
 January 7th or 14th (Date tentative at publication deadline) Ski demo and snowshoe clinics. Presented by the Utah Nordic Alliance (programs@utahnordic.com), The Cottonwood Foundation (801-947-8263), Wild Rose, University of Utah Outdoor Programs, and Wasatch Touring, with support from REI. Call or email contacts for more information in January.

Jan 7 Sat	<p>Winter Nominations Banquet & Social</p> <p><i>Meet:</i> 6:30 pm at Golden Corral Restaurant, 665 Fort Union Blvd., Midvale</p> <p><i>Organizer:</i> John Veranth 801-278-5826 veranth@xmission.com</p> <p>This is a continuation of the long-running WMC tradition of having a sit-down dinner social event to coincide with the announcement of the slate of candidates for next year's Board and the close of the nominations process. We have reserved a private room separate from the main dining area. More details on page 8 of December's Rambler.</p>
Jan 7 Sat	<p>Snowshoe: Dog Lake – ntd</p> <p><i>Meet:</i> 9:00 am at 6200 South & Wasatch Park & Ride</p> <p><i>Organizer:</i> Jim Piani 801-733-0627 jvpiani@burgoyne.com</p> <p>Jim invites you to join him on a snowshoe to Dog Lake. Expect good conversation and good times. Keep your fingers crossed for good snow and good weather! Bring your 10 E's.</p>
Jan 7 Sat	<p>Snowshoe: Organizer's Choice – mod</p> <p><i>Meet:</i> 9:00 am at 6200 South & Wasatch Park & Ride</p> <p><i>Organizer:</i> Mike Gibby 801-450-7989 GIBGADONI@GMAIL.COM</p> <p>Mike Gibby will lead the MOD snowshoe today. Expect a healthy pace and a good workout! Come prepared with your avalanche beacon, shovel and probe.</p>
Jan 8 Sun	<p>Snowshoe: Organizer's Choice – mod</p> <p><i>Meet:</i> 9:00 am at 6200 South & Wasatch Park & Ride</p> <p><i>Organizer:</i> Erin McCormack 801-891-3739 emack77@gmail.com</p> <p>Erin will choose a destination based on the conditions today. Meet at the 6200 S Wasatch park and ride at 9am. Bring your 10 E's and avalanche safety gear.</p>
Jan 8 Sun	<p>Afternoon Snowshoe: Organizer's Choice – ntd</p> <p><i>Meet:</i> 1:00 pm at 6200 South & Wasatch Park & Ride</p> <p><i>Organizer:</i> Robert Turner 801-467-1129 r46turner@gmail.com</p> <p>Sleep in, enjoy a relaxing morning, wait for it to warm up, then join Robert Turner for a (hopefully) sunny, Sunday afternoon snowshoe. He will pick a suitable destination according to the snow conditions. Come on out and enjoy the day!</p>
Jan 10 Tue	<p>Alpine Ski Tour, Tri Canyons – msd</p> <p><i>Meet:</i> Registration required</p> <p><i>Organizer:</i> Walt Haas 801-209-2545 haas@xmission.com</p> <p>TUE SKI BACKCOUNTRY: Weekly MSD (strenuous) ski tours, usually in the Tri-canyons. 8 AM starts. Good conditioning, appropriate gear and avy skills are essential. Call or e-mail Walt Haas Monday by 5 P.M. for meeting place. Newbies should call or mail ahead to discuss trip requirements.</p>
Jan 10 Tue	<p>Rock Climb - Fantastic Plastic @ Momentum – mod – 50' ascent</p> <p><i>Meet:</i> 6:00 pm at Momentum</p> <p><i>Organizer:</i> John Butler 801-718-4166 john@utahman.com</p> <p>Just ask for the Wasatch Mountain Club people at the front desk and they will point us out. Beginners welcome.</p>

Jan 11 Avalanche Education: Free Awareness Talk – ntd-

Wed *Meet:* 7:00 pm at Sprague Branch Library, 2131 South 1100 East, Salt Lake City

Organizer: Walter* Haas 801-209-2545 haas@xmission.com

This multi-media talk has an exciting 15-minute video on avalanches plus a 1/2hr. PowerPoint on how to stay alive in avalanche terrain including terrain, snow stability, safe travel and rescue. Subjects include: avalanche rescue, how avalanches work, reading avalanche terrain, obvious clues to instability, avalanche weather, safe travel practices and essential equipment. This talk is presented by the staff of the Utah Avalanche Center, who are some of the foremost avalanche experts in the country.

Jan 11 Ski Meeting/social: Free Avalanche Awareness Talk – ntd-

Wed *Meet:* 7:00 pm at Sprague Branch Library, 2131 South 1100 East, Salt Lake City

Organizer: Walter* Haas 801-209-2545 haas@xmission.com

This multi-media talk has an exciting 15-minute video on avalanches plus a 1/2hr. PowerPoint on how to stay alive in avalanche terrain including terrain, snow stability, safe travel and rescue. Subjects include: avalanche rescue, how avalanches work, reading avalanche terrain, obvious clues to instability, avalanche weather, safe travel practices and essential equipment. This talk is presented by the staff of the Utah Avalanche Center, who are some of the foremost avalanche experts in the country.

Jan 12 Snowshoe: Thursday Snowshoe Ntd To – mod- – Out & Back – Moderate pace

Thu *Meet:* 9:30 am at 6200 South & Wasatch Park & Ride

Organizer: Robert Myers 801-466-3292 (H) or 801-651-9965 (C) robertmyers47@gmail.com

Robert Myers will lead a Thursday group on a weekly snowshoe adventure. Difficulty is typically NTD to MOD. Sign up for the snowshoe email list on the WMC website to get more information on the planned trip each week. Meet him at the 6200 South & Wasatch Blvd. Park & Ride, in the South end of the lot. Departure time is 9:30AM

Jan 14 Snowshoe: Upper Greens Basin – mod

Sat *Meet:* 9:00 am at 6200 South & Wasatch Park & Ride

Organizer: Shane and Jaq Bode 801 647-2917 shanejaq@q.com

Upper Greens Basin takes you to the ridge that looks over Silver Fork and Days Fork. The snow is often excellent. This is a high energy snowshoe! Make sure to bring food and water. Bring your 10 E's, avalanche beacon, probe and shovel.

Jan 14 Alpine Ski Tour Tele/at – mod+

Sat *Meet:* 8:00 am at 6200 South & Wasatch Park & Ride

Organizer: Anne Perry 801-860-8060 perrya15@gmail.com

Show and go skiing on a variety of MOD and MOD+ terrain. Exact location TBD. Beacons, shovels, probes, skins & tele or AT gear and knowledge of their use required. This is not a beginning tour. Must be comfortable with various snow and weather conditions. Duration 5-7 hours. Reasonable but steady pace. Limit 6 people. Expect 4-5,000 vertical feet in moderate terrain. Call or email me for confirmation.

Be Prepared! Always take the 10 E's and check the local weather conditions. What are the 10 E's? Map/Compass, Flashlight, Pocketknife, Matches/Fire-Starter, Sunscreen/Bug Spray, Sunglasses, Candle, First Aid Kit, Extra Clothes, & Food and Water.

Jan 14 **Avalanche Transceiver Practice: Avalanche Awareness Clinic Part 2 – ntd-**

Sat *Meet:* 9:00 am at Butler Elementary - 2700 E 7000 S

Organizer: Walter Haas 801-209-2545 haas@xmission.com

This is Part 2 of the WMC clinic on basic backcountry avalanche awareness and is highly recommended for anyone doing WMC winter trips. See Wednesday listing for the indoor session. This will be a hands-on field session to learn how to use the transceiver in a backcountry search. To have any level of skill at avalanche rescue you must practice out in the snow! After a morning of practice we traditionally break off into groups of like mind for a short outing. Meet at Butler Elementary parking lot, 2700 East just south of Fort Union Blvd. Bring your snowshoes or skis with skins, snow shovel, 10 Es and don't forget to put fresh batteries in your transceiver. For more information or to volunteer to help with the transceiver session please contact the Winter Sports Director.

Jan 14 **Ski Meeting/social: Avalanche Transceiver Practice – ntd-**

Sat *Meet:* 9:00 am at Butler Elementary - 2700 E 7000 S

Organizer: Walter Haas 801-209-2545 haas@xmission.com

This is Part 2 of the WMC clinic on basic backcountry avalanche awareness and is highly recommended for anyone doing WMC winter trips. See Wednesday listing for the indoor session. This will be a hands-on field session to learn how to use the transceiver in a backcountry search. To have any level of skill at avalanche rescue you must practice out in the snow! After a morning of practice we traditionally break off into groups of like mind for a short outing. Meet at Butler Elementary parking lot, 2700 East just south of Fort Union Blvd. Bring your snowshoes or skis with skins, snow shovel, 10 Es and don't forget to put fresh batteries in your transceiver. For more information or to volunteer to help with the transceiver session please contact the Winter Sports Director.

Jan 15 **Nordic Ski Tour: Shingle Creek (uintas) – mod+ – 16.0 mi Out & Back – 2400' ascent – Moderate pace**

Sun *Meet:* 7:45 am at Parleys Way former Kmart lot - 2703 Parleys Way

Organizer: Michael Berry 801-583-4721

Cross-country ski tour. The route offers challenging terrain up to the 10,062 saddle overlooking Erickson Basin. Generally, lighter weight backcountry touring gear (with scales or skins) is used, however skiers need to make their own gear choices. The choice of gear should be based on the individual's skill level matched to gear weight to ensure safe and efficient travel. Beacons and shovels required. Pre-trip stop at Kamas Coffee for drinks and gear check. The organizer plans to set a track on this route several days before the trip. Contact trip organizer if driving from Park City. Meet at 7:45 am for a prompt 8:00 am departure.

Jan 15 **Snowshoe: Organizer's Choice – ntd**

Sun *Meet:* 9:00 am at 6200 South & Wasatch Park & Ride

Organizer: Michael Murtiz 801-282-5208 mmritz01@comcast.net

Mike will organize the NTD snowshoe today. It will be a friendly outing and a mellow pace. He'll select a destination that hasn't been visited too recently. Bring your 10 E's and come prepared to have fun.

Jan 15 **Afternoon Snowshoe: Organizer's Choice – ntd**

Sun *Meet:* 1:00 pm at 6200 South & Wasatch Park & Ride

Organizer: Robert Turner 801-467-1129 r46turner@gmail.com

Sleep in, enjoy a relaxing morning, wait for it to warm up, then join Robert Turner for a (hopefully) sunny, Sunday afternoon snowshoe. He will pick a suitable destination according to the snow conditions. Come on out and enjoy the day! After the snowshoe, Robert is planning a potluck get-together at his home. Come and enjoy that, too, if you would like.

- Jan 15 Sunday Evening Potluck**
Sun *Meet:* 5:30 pm at Robert Turner's house: 221 E Claybourne Ave (2770 S), Salt Lake City. It is about 1 1/2 blocks east of the Reams on State Street at 2783 S State. There is plenty of parking across the street from my house in the parking lot of the old elementary school.
Organizer: Robert Turner 801-467-1129 (home); 801-560-3378 (cell) r46turner@gmail.com
 Join us for a potluck open-house after today's Sunday Afternoon Snowshoe. It will start when we get back from the 'shoe and go until about 8:00pm. If you can't make the snowshoe, you are most welcome to come to just the open-house. Things will get going around 5:30pm. Stew or something yummy like that will be cooking in the crock pot while we're out on the 'shoe so it will be nice and hot and all ready for us when we get back. Bring whatever you would like to supplement.
- Jan 15 Snowshoe Neff's Canyon – mod – 5.5 mi Out & Back – 2450' ascent – Moderate pace**
Sun *Meet:* 9:30 am at Skyline High School - 3231 E Upland Dr (3760 S)
Organizer: Barbara Hanson 801-485-0132 barbhanson30@hotmail.com
 Snowshoe (maybe yak trax) to the meadow in Neff's Canyon. The canyon is part of the Mount Olympus Wilderness area so participants are limited to 14. If we have more than 14, we will split into two groups.
- Jan 17 Alpine Ski Tour, Tri Canyons – msd**
Tue *Meet:* Registration required
Organizer: Walt Haas 801-209-2545 haas@xmission.com
 TUE SKI BACKCOUNTRY: Weekly MSD (strenuous) ski tours, usually in the Tri-canyons. 8 AM starts. Good conditioning, appropriate gear and avy skills are essential. Call or e-mail Walt Haas Monday by 5 P.M. for meeting place. Newbies should call or mail ahead to discuss trip requirements.
- Jan 17 Snowshoe: Park City Environs Mod/msd**
Tue *Meet:* 10:00 am at Disseminated via the snowshoe email list
Carpool: 9:15 am at Parleys Way former Kmart lot - 2703 Parleys Way
Organizer: Vince Desimone 435-649-6805 vinedesimone@yahoo.com
 Vince will organize a Tuesday Group again this year. Meet at 10:00 AM every Tue and go to places in the Park City area where snowshoes are the best means of travel. Expect friendly conversation. For meeting location and last minute details, join the WMC snowshoe email list for automatic notices/updates for all Tuesday snowshoe trips throughout the winter. You will feel welcome and comfortable. Vince prefers cyberspace for questions/info. The club recommends that you wear a transceiver and know how to use it. Carpool from SLC from the Parley's Way Kmart parking lot at 9:15 am.
- Jan 17 Rock Climb - Fantastic Plastic @ Momentum – mod – 50' ascent**
Tue *Meet:* 6:00 pm at Momentum
Organizer: John Butler 801-718-4166 john@utahman.com
 Just ask for the Wasatch Mountain Club people at the front desk and they will point us out. Beginners welcome.

IF YOU'RE A PROSPECTIVE MEMBER, FEEL FREE TO JOIN ONE OR TWO ACTIVITIES TO SEE IF YOU LIKE IT! PLEASE BE SURE TO NOTIFY THE ACTIVITY ORGANIZER AHEAD OF TIME.

Jan 17 **Avalanche Education: Free Awareness Talk – ntd-**

Tue *Meet:* 7:00 pm at REI Sandy, 230 W 10600 S Ste 1700, Sandy, UT 84070

Organizer: Walter* Haas 801-209-2545 haas@xmission.com

This multi-media talk has an exciting 15-minute video on avalanches plus a 1/2hr. PowerPoint on how to stay alive in avalanche terrain including terrain, snow stability, safe travel and rescue. Subjects include: avalanche rescue, how avalanches work, reading avalanche terrain, obvious clues to instability, avalanche weather, safe travel practices and essential equipment. This talk is presented by the staff of the Utah Avalanche Center, who are some of the foremost avalanche experts in the country. Registration is strongly recommended. If you register for any of our free in-store presentations, we will hold a seat for you until the scheduled start. If you do not arrive to claim your seat before this time, we will release it to the general public. Seating may be available at the door, even if the registration is closed. Register at <http://www.rei.com/stores/81>

Jan 17 **Ski Meeting/social: Free Avalanche Awareness Talk – ntd-**

Tue *Meet:* 7:00 pm at REI Sandy, 230 W 10600 S Ste 1700, Sandy, UT 84070

Organizer: Walter* Haas 801-209-2545 haas@xmission.com

This multi-media talk has an exciting 15-minute video on avalanches plus a 1/2hr. PowerPoint on how to stay alive in avalanche terrain including terrain, snow stability, safe travel and rescue. Subjects include: avalanche rescue, how avalanches work, reading avalanche terrain, obvious clues to instability, avalanche weather, safe travel practices and essential equipment. This talk is presented by the staff of the Utah Avalanche Center, who are some of the foremost avalanche experts in the country. Registration is strongly recommended. If you register for any of our free in-store presentations, we will hold a seat for you until the scheduled start. If you do not arrive to claim your seat before this time, we will release it to the general public. Seating may be available at the door, even if the registration is closed. Register at <http://www.rei.com/stores/81>

Jan 19 **“boating Permit Application Party”**

Thu *Meet:* 6:30 pm at Rocky Mountain Pizza-3977 S. Wasatch Blvd, next to Dans

Organizer: Don Urrizaga 435-884-0147 don_urrizaga@yahoo.com

Boating Permit and Pizza Party; Once again, no sooner did we get the gear cleaned and organized and the boats rolled out, semi-inflated, and stacked up in the shed, it's time to start thinking about the upcoming 2012 season. “The club has an OUTSTANDING history of boating trips with both the equipment and experienced river runners to make it one of the club's most popular programs.” It's time to get together to discuss rivers, trip options, trip organizers, to fill out and submit permit applications, and attain our fair share of the river permits issued to Utahans. All WMC members are invited. We are going to get a slew of permits and make this the most successful year on record. You are encouraged to bring blank permit applications (see the boating website for details as to how to access them) and a checkbook. Be sure to sign up for the club's boater email notification system by sending a SUBSCRIBE message with your name and address to Bret Mathews bretmaverick999@yahoo.com.

Jan 19 **Snowshoe: Thursday Snowshoe Ntd To – mod- – Out & Back – Moderate pace**

Thu *Meet:* 9:30 am at 6200 South & Wasatch Park & Ride

Organizer: Robert Myers 801-466-3292 (H) or 801-651-9965 (C) robertmyers47@gmail.com

Robert Myers will lead a Thursday group on a weekly snowshoe adventure. Difficulty is typically NTD to MOD. Sign up for the snowshoe email list on the WMC website to get more information on the planned trip each week. Meet him at the 6200 South & Wasatch Blvd. Park & Ride, in the South end of the lot. Departure time is 9:30AM

- Jan 21 **Alpine Ski Tour, Tele/at – mod – Out & Back – Moderate pace**
 Sat *Meet:* 8:30 am at 6200 South & Wasatch Park & Ride
Organizer: Will McCarvill 801-694-6958 lizandwill@msn.com
 Show and go skiing on a variety of MOD and MOD+ terrain. Exact location TBD. Beacons, shovels, probes, skins & tele or AT gear and knowledge of their use required. This is not a beginning tour. Must be comfortable with various snow and weather conditions. Duration 5-7 hours. Reasonable but steady pace. Maximum group size of 10.
- Jan 21 **Annual Lone Peak Winter Trek Mountaineering – ext**
 Sat *Meet:* Registration required
Organizer: Michael Hannan michaelthannan@gmail.com
 Join Michael for the yearly winter expedition to Lone peak. Experience with and use of crampons, ice axe and snowshoes is mandatory. If the weather on the 21st is contrary the 28th will be the back-up date. Must contact organizer to register.
- Jan 21 **Snowshoe: Greens Basin – ntd**
 Sat *Meet:* 9:00 am at 6200 South & Wasatch Park & Ride
Organizer: Jim Piani 801-733-0627 jvpiani@burgoyne.com
 Jim is going to Greens Basin today. This is a beautiful snowshoe through pine trees to a (hopefully) sunny basin. This one is a club favorite. Bring your 10 E's.
- Jan 21 **Snowshoe - Avalanche Scenario – ntd**
 Sat *Meet:* Registration required
Organizer: Vickie Ashby 801-450-7432 vjahiker@yahoo.com
 This is an avalanche scenario practice for snowshoers. Bring your beacon, probe and shovel and participate in the scenario. More in depth than the beacon practice - you will get to practice an entire rescue. Contact Vickie Ashby for details (801) 450-7432 or email vjahiker@yahoo.com
- Jan 21 **Nordic Ski Tour: Upper Setting Road (uintas) – ntd – 8.0 mi Out & Back – 1750' ascent – Slow pace**
 Sat *Meet:* 8:45 am at Parleys Way former Kmart lot - 2703 Parleys Way
Organizer: Jerry Hach 801-583-8047
 The snow should be well settled in the Uintas by now and prime for touring. The scenic basin below Castle Peak is reached at the 6 mile mark (2,000 ft. elevation gain), however, Jerry says that he will turn around when the group is ready. Metal-edged skis would be suitable for this trip, with scales, skins, or swix. Beacons are not required. General winter safety gear is recommended. Call Jerry for more information if driving from Park City. Carpool rate is 0.15 per mile per vehicle plus gas, divided by number of occupants. Mirror Lake Highway user fee is \$6.00 per vehicle or annual pass if you have one. Meet just SW of (beyond) Cowboy Grub lot.
- Jan 22 **Snowshoe Organizer's Choice Mod – mod – Moderate pace**
 Sun *Meet:* 9:00 am at 6200 South & Wasatch Park & Ride
Organizer: Knick Knickerbocker 801-891-2669 Knick.Sold@comcast.net
 Organizer's Choice Snowshoe. Meet Knick Knickerbocker (801-891-2669 or knick.Sold@comcast.net) for today's snowshoe tour to a fun destination and possible loop. Depending on weather and avalanche conditions. Meet Knick at 6200 South & Wasatch Park-n-Ride at 9:00 am to car pool up Big Cottonwood Canyon.
- Jan 22 **Afternoon Snowshoe: Cardiff Fork – ntd**
 Sun *Meet:* 12:00 pm at 6200 South & Wasatch Park & Ride
Organizer: Barry Quinn 801-272-7097 bquinn@westminstercollege.edu
 Meet Barry at noon for a snowshoe in Cardiff Fork. Hopefully it will be warmer in the afternoon for a very pleasant outing. Bring your 10E's.

- Jan 24 **Alpine Ski Tour, Tri Canyons – msd**
 Tue *Meet:* Registration required
Organizer: Walt Haas 801-209-2545 haas@xmission.com
 TUE SKI BACKCOUNTRY: Weekly MSD (strenuous) ski tours, usually in the Tri-canyons. 8 AM starts. Good conditioning, appropriate gear and avy skills are essential. Call or e-mail Walt Haas Monday by 5 P.M. for meeting place. Newbies should call or mail ahead to discuss trip requirements.
- Jan 24 **Rock Climb - Fantastic Plastic @ Momentum – mod – 50' ascent**
 Tue *Meet:* 6:00 pm at Momentum
Organizer: John Butler 801-718-4166 john@utahman.com
 Just ask for the Wasatch Mountain Club people at the front desk and they will point us out. Beginners welcome.
- Jan 26 **Snowshoe: Thursday Snowshoe Ntd To – mod- – Out & Back – Moderate pace**
 Thu *Meet:* 9:30 am at 6200 South & Wasatch Park & Ride
Organizer: Robert Myers 801-466-3292 (H) or 801-651-9965 (C) robertmyers47@gmail.com
 Robert Myers will lead a Thursday group on a weekly snowshoe adventure. Difficulty is typically NTD to MOD. Sign up for the snowshoe email list on the WMC website to get more information on the planned trip each week. Meet him at the 6200 South & Wasatch Blvd. Park & Ride, in the South end of the lot. Departure time is 9:30AM
- Jan 27 **Sing-a-long Potluck “June In January” At Patti O’keefe’s Home**
 Fri *Meet:* 6:30 pm at 1724 Bunkerhill Road - Directions in description
Organizer: Patti O’Keefe or Fred Tripp 801 424-9215 or 435-649-4507 fredgtripp@gmail.com
 JAN 27 - FRI SOCIAL: “MAUI-WOWIE” SING-A-LONG & POTLUCK, definitely NTD. Need a break from the wintry blahs? Dig out your Hawaiian shirt and join the gang for a rousing night of song, socializing and general silliness! (Extra credit for wearing a coconut bra!!) Please bring something to share (entree, appetizer, salad, side vegetable or a dessert) with 4 to 6 others. BYOB. The fun starts at 6:30 PM and lasts until ??? We’ll have a Potluck dinner followed by singing - think folk music, campfire songs, joke songs, songs from Broadway musicals, etc. Acoustic instruments are welcome. Dust off the old vocal chords (and any musical instruments tucked away in your closet) and bring them to 1724 Bunker Hill Rd. (From Murray-Holladay Rd., turn south on King’s Row Drive which is 1660 E. Turn left on Bunker Hill Road, the 1st street on left, to 1724.) Hosted by Patti O’Keefe. Questions or need more encouragement?? Call Patti at 424-9215 or Fred Tripp at 435-649-4507 or email fredgtripp@gmail.com
- Jan 28 **Snowshoe: Red Pine – mod**
 Sat *Meet:* 9:00 am at 6200 South & Wasatch Park & Ride
Organizer: Shane and Jaq Bode 801 647-2917 shanejaq@q.com
 Shane and Jaq are going to Red Pine Lake in Little Cottonwood today. If conditions are right they will go to the upper lakes. Bring your 10 E’s, avalanche beacon, probe and shovel.
- Jan 28 **Snowshoe: Cardiff – ntd**
 Sat *Meet:* 9:30 am at 6200 South & Wasatch Park & Ride
Organizer: Ellen Jenkins 801-673-6235 ellenjenkins@yahoo.com
 Join Ellen for a snowshoe in Cardiff Fork. Come prepared for your own comfort. This will be a friendly outing and lots of fun.

Jan 28 Alpine Ski Tour, Tele/at – mod – Out & Back – Moderate pace

Sat *Meet:* 9:00 am at 6200 South & Wasatch Park & Ride

Organizer: Steve Duncan 801-680-9236 duncste@comcast.net

Show and go skiing on a variety of MOD and MOD- terrain. Exact location TBD. Beacons, shovels, probes, skins & tele or AT gear and knowledge of their use required. This is not a beginning tour. Must be comfortable with various snow and weather conditions. Reasonable but steady pace. Maximum group size of 10.

Jan 29 Nordic Ski Tour: Currant Creek Peak (daniel's Summit) – msd- – 21.0 mi Loop – 2800' ascent – Moderate pace
Sun

Meet: Registration required

Organizer: Michael Berry 801-583-4721 mberryxc@earthlink.net

Cross-country (xc) ski tour. The approach to this peak involves crossing a high, wide mountain valley, and climbing rolling hills of aspen and conifers. Snowmobile traffic should be minimized by the route selection, although the tracks will be evident in the valley. Generally, lighter weight backcountry touring gear (with scales, or skins) is used (e.g. Fischer S-Bound 78 skis). Contact organizer if driving from the Park City area. Remember to bring \$7- \$10 if you are a passenger. High energy trip. Beacons are required for participating on the final approach to the summit. Winter safety and cold weather gear (wind) and headlamps advised.

Jan 29 Nordic Ski Tour: Learn To Cross Country Ski Clinic – ntd- – Slow pace

Sun *Meet:* Registration required

Organizer: Jennifer Jackson 435-503-0569 jensjackson@me.com

Learn to cross country ski or just get some tips to improve your skiing. There will be a clinic on Jan 29th at 1:00-2:00 for classic skiing and 2:00 to 3:00 for skate skiing. This will be taught at the Olympic Venue of Soldier Hollow in Midway, Utah. There will be a \$5 fee for a trail pass and \$5 fee for rentals if needed. This is deeply discounted for WMC members. The class is taught by a certified ski instructor. Space limits so please call to pre-register by Jan 22nd.

Jan 29 Snowshoe: Organizer's Choice – mod

Sun *Meet:* 9:00 am at 6200 South & Wasatch Park & Ride

Organizer: Deirdre Flynn and Mohamed Abdallah 801-466-9310 deirdre.flynn@marriott.com

Deirdre and Mohamed will select a suitable destination for the weather and snow conditions today. Meet at 9am to find out where they're going. Bring your 10E's and avalanche safety gear.

Jan 29 Snowshoe- Western Uintas, Norway Flats Road – ntd+ – Out & Back

Sun *Meet:* 8:30 am at Parleys Way former Kmart lot - 2703 Parleys Way

Organizer: David Andrenyak 801-582-6106 andrenyakda@aim.com

This is an opportunity to visit the west part of the Uintas. The trail climbs through pine forest stands and offers great views of the Provo River drainages and parts of the Wasatch to the west. A good destination for this NTD event is a view point about 3 miles from the trail head (about a 1000 foot elevation gain). Please bring the 10 essentials and snow safety equipment. It is about a 1 hour drive to the trail head. There is a Mirror Lake Highway fee of \$ 6.00 per car.

- Jan 29 **Hike Or Snowshoe: Avenues Ridge Run – mod – 9.0 mi – 2300’ ascent**
 Sun *Meet:* 9:30 am at Entrance to the Bonneville Shoreline Trail at about 601 East 18th Ave (just north of the 18th Ave LDS church).
Organizer: Carrie Clark and Rick Gamble 801-519-9257 dr_carolyn@yahoo.com
 Avenues Ridge Run to the lower flank of Little Black Mtn. About 9 miles RT, about 2300’ total elevation gain. Bring poles and yaktrax (possibly snowshoes if we’ve had a fresh, deep snow). If you dare, wear slick pants or bring a large, heavy duty plastic bag for an optional rump glissade. Meet at the entrance to the Bonneville Shoreline Trail at about 645 East 18th Ave (second driveway east of the 18th Ave LDS church). Call the organizer if you need driving instructions - please leave a message.
- Jan 31 **Alpine Ski Tour, Tri Canyons – msd**
 Tue *Meet:* Registration required
Organizer: Walt Haas 801-209-2545 haas@xmission.com
 TUE SKI BACKCOUNTRY: Weekly MSD (strenuous) ski tours, usually in the Tri-canyons. 8 AM starts. Good conditioning, appropriate gear and avy skills are essential. Call or e-mail Walt Haas Monday by 5 P.M. for meeting place. Newbies should call or mail ahead to discuss trip requirements.
- Jan 31 **Snowshoe: Park City Environs Mod/msd**
 Tue *Meet:* 10:00 am at Disseminated via the snowshoe email list
Carpool: 9:15 am at Parleys Way former Kmart lot - 2703 Parleys Way
Organizer: Vince Desimone 435-649-6805 vincedesimone@yahoo.com
 Vince will organize a Tuesday Group again this year. Meet at 10:00 AM every Tue and go to places in the Park City area where snowshoes are the best means of travel. Expect friendly conversation. For meeting location and last minute details, join the WMC snowshoe email list for automatic notices/updates for all Tuesday snowshoe trips throughout the winter. You will feel welcome and comfortable. Vince prefers cyberspace for questions/info. The club recommends that you wear a transceiver and know how to use it. Carpool from SLC from the Parley’s Way Kmart parking lot at 9:15 am.
- Jan 31 **Rock Climb - Fantastic Plastic @ Momentum – mod – 50’ ascent**
 Tue *Meet:* 6:00 pm at Momentum
Organizer: John Butler 801-718-4166 john@utahman.com
 Just ask for the Wasatch Mountain Club people at the front desk and they will point us out. Beginners welcome.
- Feb 3 **Death Valley Mid-winter Road Bike Escape – mod- – Out & Back – Moderate pace**
 Fri – *Meet:* Registration required
 Feb 7 *Organizer:* Cheryl Soshnik 435-649-9008 csoshnik@yahoo.com
 Tue The Bob Wright Memorial Death Valley Bicycle and Camping Trip is a great mid-winter escape from the snow, to (sometimes) sunny warm Death Valley. We will reserve six campsites at Furnace Creek for 5 days and 4 nights. Daily bicycle rides include Bad Water, Scotty’s Castle and Stovepipe Wells, with options for hiking as well. Trip size is limited to 24 participants, so if interested contact me ASAP and no later than Dec 10 for details on paying the reservation deposit or getting on the wait list. Contact me at the number listed, or my new SLC number is 801.623.2329

- Feb 4 Alpine Ski Tour, Tele/at – mod – Out & Back – Moderate pace**
 Sat *Meet:* 8:30 am at 6200 South & Wasatch Park & Ride
Organizer: Will McCarvill 801-694-6958 lizandwill@msn.com
 Show and go skiing on a variety of MOD and MOD+ terrain. Exact location TBD. Beacons, shovels, probes, skins & tele or AT gear and knowledge of their use required. This is not a beginning tour. Must be comfortable with various snow and weather conditions. Duration 5-7 hours. Reasonable but steady pace. Maximum group size of 10.
- Feb 5 Nordic Ski Tour: Triangle Tour (daniel's Summit) – mod+ – 10.0 mi Loop – 1700' ascent – Moderate pace**
 Sun *Meet:* 10:30 am at Parleys Way former Kmart lot - 2703 Parleys Way
Organizer: Michael Berry 801-583-4721 mberryxc@earthlink.net
 Cross-country ski tour. Starting from the summit lodge parking area at noon, this classic XC tour links blue diamond ski trails, groomed snowmobile tracks, and backcountry routes via Telemark Hill. High points on Strawberry Ridge are Twin Peaks, Strawberry Peak, and BM 9693. The descent is through low-angle aspen glades- all in one-half day! Bring beacon, shovel, and general winter safety gear. A change of clothes (at lodge facilities) is optional. We may stop at the 'Other Side' Bar for a half-time beer. Meet SW of the Cowboy Grub Restaurant.
- Feb 7 Rock Climb - Plastic Fanatics @ Momentum – mod – 50' ascent**
 Tue *Meet:* 6:00 pm at Momentum
Organizer: John Butler 801-718-4166 john@utahman.com
 Just ask for the Wasatch Mountain Club people at the front desk and they will point us out. Beginners welcome.
- Feb 7 Avalanche Education: Free Science Of Avalanches – ntd-**
 Tue *Meet:* 7:00 pm at SLC REI, 3285 E 3300 S
Organizer: Walter* Haas 801-209-2545 haas@xmission.com
 Science of avalanches presented by Utah Avalanche Center
- Feb 7 Ski Meeting/social: Free Science Of Avalanches – ntd-**
 Tue *Meet:* 7:00 pm at SLC REI, 3285 E 3300 S
Organizer: Walter* Haas 801-209-2545 haas@xmission.com
 Science of avalanches presented by Utah Avalanche Center
- Feb 16 Rock Climb - Plastic Fanatics @ Momentum – mod – 50' ascent**
 Thu *Meet:* 6:00 pm at Momentum
Organizer: John Butler 801-718-4166 john@utahman.com
 Just ask for the Wasatch Mountain Club people at the front desk and they will point us out. Beginners welcome.

The Wasatch Mountain Club is a great place to meet new people interested in the outdoor activities that you enjoy. In addition to the many physical activities, the club also supports several social outings, picnics, potlucks, trip slideshows, live music, and of course, parties. Anyone can suggest a social event. The social committee would love to hear your suggestions and accept your participation. If you have a trip talk to present, just let us know.

Feb 17 Sing-a-long At Linda And Don Frady's Home

Fri *Meet:* 6:30 pm at 3705 Golden Hills Avenue (8740 South) in Cottonwood Heights. See directions above.

Organizer: Linda or Don Frady or Fred Tripp 801-943-1871 or 435-649-4507 or cell: 301-461-0161 lindakosky@msn.com or fredgtripp@gmail.com

FEBRUARY 17TH - FRI SOCIAL: SING-A-LONG POT LUCK, definitely NTD. A fun evening of singing, socializing and enjoying good food. The festivities begin at 6:30 PM and last until 10 or so. Stretch your vocal chords (and bring any musical instrument that you'd like to play) and join the singers at the Frady's home located at 3705 Golden Hills Avenue (8740 South) in Cottonwood Heights. This is a potluck and BYOB. Plan to bring an entree, salad, vegetable or dessert to share and also what you plan to drink. Directions: Take Wasatch Blvd South to 8740 South and turn left, east, on Golden Hills Avenue to 3705. Questions? Need encouragement? ..or would like more information call Linda or Don Frady at 801-943-1871 email at lindakosky@msn.com or Fred Tripp at 435-649-4507 (email at fredgtripp@gmail.com) Be sure to add your name to our email list to receive any updates. Just go the WMC web site: Click on Member Menu; Click on EMAIL LIST SUBSCRIBE & UNSUBSCRIBE; Log In, follow the directions to subscribe and select the "SOCIAL" category. When finished return to Member Menu and Log Off.

Feb 18 Alpine Ski Tour, Tele/at – mod – Out & Back – Moderate pace

Sat *Meet:* 8:30 am at 6200 South & Wasatch Park & Ride

Organizer: Will McCarvill 801-694-6958 lizandwill@msn.com

Show and go skiing on a variety of MOD and MOD+ terrain. Exact location TBD. Beacons, shovels, probes, skins & tele or AT gear and knowledge of their use required. This is not a beginning tour. Must be comfortable with various snow and weather conditions. Duration 5-7 hours. Reasonable but steady pace. Maximum group size of 10.

Feb 21 Rock Climb - Plastic Fanatics @ Momentum – mod – 50' ascent

Tue *Meet:* 6:00 pm at Momentum

Organizer: John Butler 801-718-4166 john@utahman.com

Just ask for the Wasatch Mountain Club people at the front desk and they will point us out. Beginners welcome.

Feb 23 Snowshoe Bryce National Park – ntd – 7.0 mi – Moderate pace

Thu – *Meet:* Registration required

Feb 26 *Organizer:* Rick Thompson gone2moab@hotmail.com

Sun If you've heard how beautiful the red rock of Bryce is in the snow, but haven't ever been down there to see it, here's your chance- a mid winter snowshoe and or X/C ski tour to Bryce Canyon. We'll stay at the warm and cozy Rubys Inn, just outside the park, and take advantage of the fee free 30+ km of trails, which have a ski track and snowshoe space, both inside the park, and in the adjoining national forest. Plan to drive down thursday afternoon or evening, and spend two full days seeing and skiing the area, and returning home on sunday. Have to work Friday? Come down friday after work, and still get in saturday and another good hike on sunday before leaving. Free thursday? Come down early that day and get in an extra day exploring. There are lots of trails, including groomed track, and loop options, so you can go to see it all and get a workout, or you can just go to see it, and kick back and take advantage of the many amenities, including the spa, hot tub and indoor pool. This trip was a huge hit last year, and will fill fast. Half price rates in this offseason make it an affordable getaway, on top of being one you won't forget. Please sign up with me before making reservations @ Rubys Inn.

Feb 28 Rock Climb - Plastic Fanatics @ Momentum – mod – 50' ascent

Tue *Meet:* 6:00 pm at Momentum

Organizer: John Butler 801-718-4166 john@utahman.com

Just ask for the Wasatch Mountain Club people at the front desk and they will point us out. Beginners welcome.

- Mar 1 **Kayak/canoe- The Great Escape – flat water – 13.0 mi**
 Thu – *Meet:* Registration required
 Mar 4 *Organizer:* Rick Thompson gone2moab@hotmail.com
 Sun
 Time for another annual classic- the first of March Canoeing Canyoneering Hot tubbing trip to the Black Canyon, down by Vegas. A wonderful getaway from winter weekend- spend it hiking, scrambling, canoeing and luxuriating in scenic hot tubs; leaving your snow boots and parkas home, and hanging out in your Tevas, T shirts and shorts. We will drive down thursday morning, check into our nice Hacienda Hotel, near Boulder Dam, at off season rates (last year we paid 29.99 for a room w/ 2 queens), and then drive over and check out the dam, and the stunning new bridge over the dam. After dinner together at the casino buffet, we will get our gear together for an early morning rollout to meet the outfitter who will be driving us through the national high security zone to the foot of the dam, where we will launch our rented canoes and kayaks. There is not much real canoeing involved, it is all flat water, we will spend the first night camped at the mouth of a canyon less than a mile from the put in, and then saturday morning meander another mile to a second exploratory canyon, where we will spend the day, before paddling another mile down to camp saturday night @ the third canyon. With more hot springs and pools. Sunday morning we will paddle for 3 hours down to the takeout, where the outfitter picks us up and will bring us back to pick up our cars at the hotel, and then we will boogy for home sunday afternoon. Actually you'd better not plan on leaving all of your snow gear home- a couple of years ago, after kicking back in our swim suits all weekend, coming home we ran into a major blizzard around Beaver, and struggled around vehicles parked on the shoulders and in the barrow pits, before we made it back home. It is still winter. Here.
- Mar 3 **Alpine Ski Tour, Tele/at – mod – Out & Back – Moderate pace**
 Sat *Meet:* 8:30 am at 6200 South & Wasatch Park & Ride
Organizer: Will McCarvill 801-694-6958 lizandwill@msn.com
 Show and go skiing on a variety of MOD and MOD+ terrain. Exact location TBD. Beacons, shovels, probes, skins & tele or AT gear and knowledge of their use required. This is not a beginning tour. Must be comfortable with various snow and weather conditions. Duration 5-7 hours. Reasonable but steady pace. Maximum group size of 10.
- Mar 6 **Rock Climb - Plastic Fanatics @ Momentum – mod – 50' ascent**
 Tue *Meet:* 6:00 pm at Momentum
Organizer: John Butler 801-718-4166 john@utahman.com
 Just ask for the Wasatch Mountain Club people at the front desk and they will point us out. Beginners welcome.
- Mar 8 **Canoeing Black Canyon - Part Deux – flat water – 13.0 mi**
 Thu – *Meet:* Registration required
 Mar 11 *Organizer:* Zig Sondelski 801-230-3623 zig.sondelski@gmail.com
 Sun
 There has been enough demand in the past that we've had a second Black Canyon canoeing-canyoneering-hot tubbing trip, so let's try it again. This trip is the following weekend after Rick's (his is already full). Black Canyon is south of Las Vegas on the Colorado River below Hoover Dam. As Rick describes the trip "A wonderful getaway from winter weekend - spend it hiking, scrambling, canoeing and luxuriating in scenic hot tubs, leaving your snow boots and parkas home and hanging out in your Tevas, T shirts and shorts." We will drive down Thursday morning, check into the Hacienda Hotel near Boulder Dam, then check out the dam and the new bridge over the canyon. After dinner together at the casino buffet, we will get our gear together for an early Friday morning rollout to meet the outfitter who will be driving us through the national high security zone to the foot of the dam, where we will launch our rented canoes. On Friday and Saturday we spend most of our time exploring side canyons and hot springs with short stretches in our canoes between them. On Sunday morning we will paddle for 3 hours down to the takeout (Willow Beach), where the outfitter picks us up and brings us back to our cars at the hotel. We will drive home Sunday. Plan on possible temperatures from the 40's at night to 90's in the day. Canoes carry a fair amount of gear so it is almost like car camping. We will be renting a van. I will arrange the van, room and canoe rentals and shuttles. Trip is limited to 8 people. Sign up soon as NPS permits are required with your name on them and we have learned that they go fast.

Mar 10 California Dreamin' Car Camp – mod

Sat – *Meet:* Registration required

Mar 17 *Organizer:* Aaron Jones 801-467-3532 ajonesmvp@msn.com

Sat
Savor the beauty of Joshua Tree National Park and experience the wonderland of Anza Borrego Desert State Park. Anza Borrego is a springtime dreamscape of palm trees, wildflowers, and waterfalls. The leader has one campsite for two tents reserved for 3/13-3/16. Any additional sites should be reserved immediately.

Mar 10 Nordic Ski Tour - Multi Day Tour In Yellowstone National Park – msd – Moderate pace

Sat – *Meet:* Registration required

Mar 14 *Organizer:* Glen Mackey 540-529-4907 glen.mackey@gmail.com

Wed
I am interested in organizing a 4-5 day nordic ski tour to Yellowstone National Park. Trip details are not locked in, but at this point I mainly want to see if there are some other folks interested in going. There are plenty of good route options to choose from, both on the packed roads or heading out into the backcountry. Daily mileage would depend on what sort of surface we were travelling on, but would probably be around 7-15+ miles per day. This is near the end of the snowcoach/snowmobile touring season up there so traffic on the roads should be pretty light. If you are interested in going please let me know so we can discuss logistics and route options.

Mar 13 Rock Climb - Plastic Fanatics @ Momentum – mod – 50' ascent

Tue *Meet:* 6:00 pm at Momentum

Organizer: John Butler 801-718-4166 john@utahman.com

Just ask for the Wasatch Mountain Club people at the front desk and they will point us out. Beginners welcome.

Mar 16 Nordic Ski Tour: Glide The Divide (co/wy) – msd – Loop – Fast pace

Fri – *Meet:* Registration required

Mar 18 *Organizer:* Michael Berry 801-583-4721 mberryxc@earthlink.net

Sun
Cross-country skiing. The Steamboat Springs (CO) Nordic Council sponsors the 8th Annual 'Glide the Divide' (aka..North Routt Coureur de Bois)(www.glidethedivide.com). It was named after 17th century French Canadian traders or "woods runners". The 45 k marathon (27 mi.) and 90 K ultramarathon (55 mi.) ski tour/race (classic/skate) starts at historic Hahn's Peak Village, Colorado. The course traverses through the Routt and Medicine Bow National Forests and is groomed by a diehard crew for the day of the race only. This year a 15 k shorter loop has been added. Reasonable room rates are available in downtown Steamboat. The old town Pub provides good buffalo burgers and microbrew. The driving distance via U.S. 40/ Vernal is the same as for Jackson Hole. NTD to EXT based to distance. Early registration ends FEBRUARY 29th, 2012. Please contact organizer by MARCH 4th to register for carpools.

Mar 17 Alpine Ski Tour, Tele/at – mod – Out & Back – Moderate pace

Sat *Meet:* 8:30 am at 6200 South & Wasatch Park & Ride

Organizer: Will McCarvill 801-694-6958 lizandwill@msn.com

Show and go skiing on a variety of MOD and MOD+ terrain. Exact location TBD. Beacons, shovels, probes, skins & tele or AT gear and knowledge of their use required. This is not a beginning tour. Must be comfortable with various snow and weather conditions. Duration 5-7 hours. Reasonable but steady pace. Maximum group size of 10.

Mar 20 Rock Climb - Plastic Fanatics @ Momentum – mod – 50' ascent

Tue *Meet:* 6:00 pm at Momentum

Organizer: John Butler 801-718-4166 john@utahman.com

Just ask for the Wasatch Mountain Club people at the front desk and they will point us out. Beginners welcome.

Mar 27 **Rock Climb - Plastic Fanatics @ Momentum – mod – 50' ascent**
Tue *Meet:* 6:00 pm at Momentum
Organizer: John Butler 801-718-4166 john@utahman.com
Just ask for the Wasatch Mountain Club people at the front desk and they will point us out. Beginners welcome.

Mar 30 **Nordic Ski Tour: Kings Peak – msd – 32.0 mi Out & Back – 4500' ascent**
Fri – *Meet:* 5:00 pm at Parleys Way former Kmart lot - 2703 Parleys Way
Dec 31 *Organizer:* Larry Swanson 801-583-4043 oldswaney@gmail.com
Wed Annual 32 mile round-trip ski tour to Kings Peak or the basin below meets Friday night at Parley's Way, J.B.'s (Evanston, WY), or the North Slope Winter Parking Area. Headlamp wake-up call at 4:00 am for 5:00 am start Saturday morning.

Mar 31 **Nordic Ski Tour: Kings Peak – msd – 32.0 mi Out & Back – 4500' ascent – Fast pace**
Sat *Meet:* 5:00 pm at Parleys Way former Kmart lot - 2703 Parleys Way
Organizer: Larry Swanson 801 583-4043 oldswaney@gmail.com
The last Saturday in March is the big event of the ski season. The Kings Peak Ski Tour, hosted for the 39th (or so) year by Steve and Larry Swanson, will convene on Friday night (March 30th) by nightfall at the Henrys Fork Winter Parking Area and get underway in the pre-dawn hours on Saturday morning with headlamps. The total distance for the summit via 'Swanson's cut-off' is 32 miles round trip. Gunsight Pass or Elkhorn Crossing in the basin make great destinations too. See March Rambler for further details.

Apr 21 **Nordic Ski Tour: High Uintas – msd**
Sat *Meet:* Registration required
Organizer: Michael Berry 801-583-4721 mberryxc@earthlink.net
Organizer's choice.

Jul 4 **Rock Climb In Lone Peak Cirque – msd**
Wed *Meet:* Registration required
– Jul 8 *Organizer:* Stephan Fowler 801-942-6552 shiveringman@comcast.net
Sun Trad climbing extravaganza. Hike up to the LP cirque, camp for a couple of nights and climb some great routes. LP routes are full-on, multi-pitch trad routes, requiring 5.7 lead skills. Parties of 2 are strongly encouraged. Trip will be limited to 8 climbers.

Participation in any WMC activity can be dangerous. It is your responsibility to evaluate your own preparedness and ability to safely participate in any activity. Please be sure to read and re-read the release forms in the back of this publication, as well as on the sign-up sheets at the beginning of each activity.

"KNOW BEFORE YOU GO" and make sure to bring your 10 Es! Check with the Utah Avalanche center web site for snow conditions and weather forecast <http://www.avalanche.org/~uac/> and review the WMC Winter Sports Policy, Backcountry Travel Techniques and Backcountry Ski & Snowshoe Route Ratings listed on the Wasatch Mountain Club website under Winter Sports www.wasatchmountainclub.org. Organizers are expected to keep their groups together and use proper backcountry etiquette.

WASATCH MOUNTAIN CLUB (WMC)
MEMBERSHIP APPLICATION
(Do not use for renewals.)

Please read carefully and completely fill out both sides of the page. Print legibly, please.

I am applying for membership as: _____ Single _____ Couple

Name: Applicant 1: _____ Birth date: _____

Name: Applicant 2: _____ Birth date _____

Address: _____

City, State, Zip _____

Applicant 1: Main phone: _____ email address: _____

Applicant 2: Main phone: _____ email address: _____

PRIVACY INFORMATION: The WMC defaults to publish name, phone and email on website “Member’s list” area. This information is only available to active members on the web site. With your permission, we also occasionally release our address list to WMC-Board approved wilderness and/or conservation organizations for one-time mailings under the stipulation that they do not continue to use the list or provide it to other. You may opt to (1) have your address published on the “Members Only” area but not made available to other organizations, (2) have your address published on the “Members Only” area and provided to Board-approved organizations, or (3) not have your address on the WMC roster nor given to other organizations.

YOU NEED TO TAKE THE FOLLOWING ACTION: Once you have been notified that your application has been accepted, log in to the WMC site and select your level of privacy from the menu under Club Preferences. If you do not have computer access or need help, please contact the Membership Director to make your preferences known.

If you would like a printed copy of the membership roster, you may download a pdf file.

If you are a member and do not have computer access and would like a membership roster, please contact the Membership Director and that list will be provided to you.

Membership dues:

\$40.00 for single membership (Annual dues \$35.00 plus \$5.00 paper application fee)

\$55.00 for couple membership (Annual dues \$50.00 plus \$5.00 paper application fee)

\$25.00 for student membership (Annual dues \$20.00 plus \$5.00 paper application fee)

Student members must be full-time student, age 30 and under.

Enclosed is \$_____ for application fee and first year’s dues. Check or money order only. Please make checks payable to Wasatch Mountain Club.

WASATCH MOUNTAIN CLUB (WMC)
Applicant Agreement, Acknowledgement of Risk and Release from Liability

VOLUNTARY PARTICIPATION: I acknowledge that my participation in all WMC activities is voluntary. No one is forcing me to participate. I agree to abide by the rules of the WMC.

ASSUMPTION OF RISK: I am aware that WMC activities involve risks, and may result in injury, illness, death, and damage to or loss of property. These dangers include but are not limited to: the hazards of traveling in remote areas without medical services or care, the forces of nature, the inherent dangers involved in participation in sports, wilderness travel, and social activities, and the negligent actions of other persons or agencies. I understand that all activities should be considered exploratory, with the possibility of unexpected conditions and route variations. The WMC is not, nor does it provide, a professional guide service. In order to partake in the enjoyment and excitement of WMC activities, I am willing to accept the risk and uncertainty involved as being an integral part of the activity. I acknowledge this risk, and assume full responsibility for any and all risks of injury, illness, death, or damage to or loss of my property.

PREPARATION: I understand that it is my responsibility to evaluate the difficulties of any WMC activity I participate in, and decide whether I am prepared by having the experience, skill, knowledge, equipment, and the physical and emotional stamina to participate safely.

RELEASE OF LIABILITY AND PROMISE NOT TO SUE: I agree that I, my heirs, personal or legal representatives hereby do release and hold harmless from all liability, and promise not to bring any suit or claim against the WMC, its activity organizers, directors, agents or representatives for any injury, illness, death or damage and loss of property resulting from my participation in any WMC activity even if they negligently caused the injury or damage.

LEGAL FEES: Should it become necessary for the WMC, or someone on their behalf, to incur attorney fees and costs to enforce this agreement, I agree to pay the WMC reasonable costs and fees thereby expended, or for which liability is incurred.

INSURANCE: I understand that the WMC strongly recommends that I maintain insurance sufficient to cover any injury, illness or property damage that I may incur while participating in WMC activities. In the event of injury, illness or death related to any WMC activity, I recognize that I, or my estate, will bear the full cost of my evacuation or recovery, and any related medical care that I may need. I acknowledge that the WMC carries no insurance whatsoever for any participants in WMC activities.

My signature below indicates I have read this entire document, understand it completely, understand it affects my legal rights, and agree to be bound by its terms. I certify I am at least 18 years old.

Signature 1 _____ Print Name 1 _____ Date: _____

Signature 2 _____ Print Name 2 _____ Date: _____

Mail completed application to:

Membership Director
Wasatch Mountain Club
1390 South 1100 East #103
Salt Lake City, UT 84105-2443

REI COMMUNITY CALENDAR ANNOUNCEMENTS

CONTACT: Celeste Eppler, EMAIL: ceppler@rei.com, (801) 486-2100, ext. 207

SANDY CITY - 10600 SOUTH & 230 WEST

Avalanche Awareness - Know Before You Go, Tuesday, January 17th, 7pm

This multi-media talk by the Utah Avalanche Center includes an exciting 15-minute video on avalanche basics followed by a half-hour Power Point on how to stay alive in avalanche terrain. Ages 14 and older.

Ski & Snowboard: Tune and Wax Basics, Thursday, January 26th, 7pm

Focus will be on the basics of waxing, including base preparation, structure, major and minor repair, and stone grinding. Our expert technician will also explain different waxes. Registration recommended.

SALT LAKE - 3285 EAST & 3300 SOUTH

Snowshoe Basics, Tuesday, January 3rd, 7pm

We will focus on selecting appropriate gear and finding out where to go snowshoeing in your area. If you've ever thought about getting into snowshoeing, this is a great introduction to the sport! Registration recommended.

Avalanche Awareness - Know Before You Go, Thursday, January 5th, 7pm

This multi-media talk by the Utah Avalanche Center includes an exciting 15-minute video on avalanche basics followed by a half-hour Power Point on how to stay alive in avalanche terrain. Ages 14 and older.

Comfort 101, Monday, January 9th, 7pm

REI employee Shane Waterbury will cover new fabrics from wool to synthetic, old standbys, things you may have in your closet and a new way to use them. We'll show you how to properly layer to stay warm and dry.

Ski & Snowboard: Tune and Wax Basics, Tuesday, January 10th, 7pm

We will focus on selecting appropriate gear and finding out where to go snowshoeing in your area.

Looking Inside the Greatest Snow on Earth, Thursday, January 12th, 7pm

Researcher Cale Fallgatter and Professor Tim Garrett from the U of U Department of Atmospheric Sciences have built a new camera for automatically photographing individual snowflakes in free fall. Ages 16 and older.

GPS Basics, Thursday, January 19th, 7pm

Participants in this class will receive a basic overview of the features and functions of a GPS unit. Instruction includes GPS setup, capturing waypoints, working with coordinates, and waypoint navigation.

Avalanche Awareness - Know Before You Go, Tuesday, January 24th, 7pm

This multi-media talk by the Utah Avalanche Center includes an exciting 15-minute video on avalanche basics followed by a half-hour Power Point on how to stay alive in avalanche terrain. Ages 14 and older.

Edge of the Cedars State Park Museum: Discover More!, Thursday, January 26th, 7pm

Discover the wonders of Edge of the Cedars State Park Museum. This site preserves what was once a village inhabited by the ancestors of contemporary Puebloan peoples from AD 825 to 1125. Ages 12 and older.

Snowshoe Basics, Monday, January 30th, 7pm

Are you looking for a fun winter sport? We will focus on selecting appropriate gear and finding out where to go snowshoeing in your area. If you've ever thought about getting into snowshoeing, this is a great introduction to the sport!

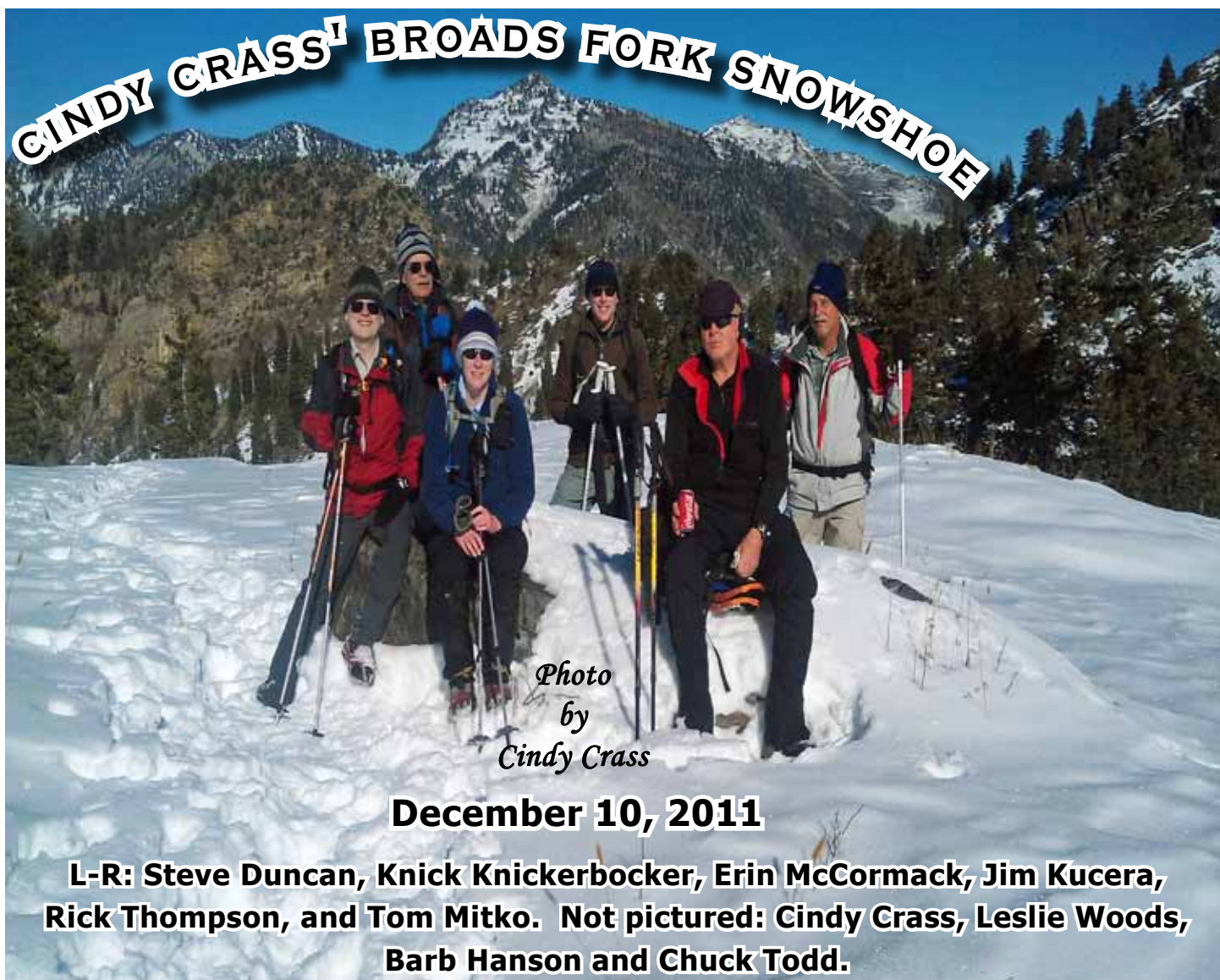
History of Skiing in the Wasatch, Tuesday, January 31st, 7pm

Alexis Kelner, noted ski historian, founder of Save Our Canyons, and one of the modern pioneers of backcountry skiing in Utah. He is the author of Skiing in Utah: A History and co-author with David Hanscom of the backcountry skiing guides Wasatch Tours I, Wasatch Tours II and Wasatch Tours III.

**WASATCH MOUNTAIN CLUB
1390 SOUTH 1100 EAST
SALT LAKE CITY, UT 84105**

**PERIODICALS
POSTAGE PAID
SALT LAKE CITY,
UTAH**

CINDY CRASS' BROADS FORK SNOWSHOE



*Photo
by
Cindy Crass*

December 10, 2011

**L-R: Steve Duncan, Knick Knickerbocker, Erin McCormack, Jim Kucera,
Rick Thompson, and Tom Mitko. Not pictured: Cindy Crass, Leslie Woods,
Barb Hanson and Chuck Todd.**

Visit us online at www.wasatchmountainclub.org