

# The **Rambler**

THE MONTHLY PUBLICATION OF THE WASATCH MOUNTAIN CLUB

APRIL 2026  
VOL. 105 NO. 4



# GOVERNING BOARD / CONTACT US

## EXECUTIVE OFFICERS

**Mark Maier**, President, 703-408-6912, [president@wasatchmountainclub.org](mailto:president@wasatchmountainclub.org)  
**Julie Kilgore**, Vice President, 801-244-3323, [vicepresident@wasatchmountainclub.org](mailto:vicepresident@wasatchmountainclub.org)  
**David Ashley**, Secretary, 703-966-9741, [secretary@wasatchmountainclub.org](mailto:secretary@wasatchmountainclub.org)  
**John Butler**, Co-Treasurer, 801-654-8424, [treasurer@wasatchmountainclub.org](mailto:treasurer@wasatchmountainclub.org)  
**Bret Mathews**, Co-Treasurer, 801-831-5940, [treasurer@wasatchmountainclub.org](mailto:treasurer@wasatchmountainclub.org)  
**Aditi Vashist**, Co-Treasurer, [treasurer@wasatchmountainclub.org](mailto:treasurer@wasatchmountainclub.org)

## ADMINISTRATION

**Deb Frank**, Historian, 801-860-9251, [historian@wasatchmountainclub.org](mailto:historian@wasatchmountainclub.org)  
**Bret Mathews**, Information Technology Director, 801-831-5940, [webmaster@wasatchmountainclub.org](mailto:webmaster@wasatchmountainclub.org)  
**Ann Trauscht**, Membership Co-Director, 801-694-6337, [membershipdirector@wasatchmountainclub.org](mailto:membershipdirector@wasatchmountainclub.org)  
**Chris Koch**, Membership Co-Director, 937-689-3626, [membershipdirector@wasatchmountainclub.org](mailto:membershipdirector@wasatchmountainclub.org)  
**Julie Kilgore**, Merchandise Coordinator, 801-244-3323, [merchandisecoordinator@wasatchmountainclub.org](mailto:merchandisecoordinator@wasatchmountainclub.org)  
**Stephen Dennis**, Member Discount Coordinator, 801-349-5635, [discountcoordinator@wasatchmountainclub.org](mailto:discountcoordinator@wasatchmountainclub.org)  
**Dea Nelson**, Public Relations Director, 832-679-2146, [prdirector@wasatchmountainclub.org](mailto:prdirector@wasatchmountainclub.org)  
**Areli Jimenez-Castro**, Social Media Coordinator, 801-831-3273, [socialmediacoordinator@wasatchmountainclub.org](mailto:socialmediacoordinator@wasatchmountainclub.org)  
**Adam Marcus**, Publications Director - The RAMBLER, 313-799-2326, [rambler@wasatchmountainclub.org](mailto:rambler@wasatchmountainclub.org)  
**Ben Wake**, RAMBLER Content Coordinator, 801-830-8631, [rambler@wasatchmountainclub.org](mailto:rambler@wasatchmountainclub.org)  
**Randy Long**, Rambler Distribution Manager, 606-483-4087

## BIKING

**Craig Williams**, Biking Director, 801-598-9291, [bikingdirector@wasatchmountainclub.org](mailto:bikingdirector@wasatchmountainclub.org)  
**Cheryl Krusko**, Road Biking Coordinator, 801-474-3759, [bikingdirector@wasatchmountainclub.org](mailto:bikingdirector@wasatchmountainclub.org)  
**Daisy DeMarco**, Trail Reporting Coordinator, 610-517-7867, [trailreport@wasatchmountainclub.org](mailto:trailreport@wasatchmountainclub.org)

## BOATING

**Luke Johnson**, Boating Co-Director, 801-755-7575, [boatingdirector@wasatchmountainclub.org](mailto:boatingdirector@wasatchmountainclub.org)  
**Kay Tran**, Boating Co-Director, 802-578-9397, [boatingdirector@wasatchmountainclub.org](mailto:boatingdirector@wasatchmountainclub.org)  
**Bret Mathews**, Boating Equipment Co-Coordinator, 801-831-5940, [boatingcoordinator@wasatchmountainclub.org](mailto:boatingcoordinator@wasatchmountainclub.org)  
**Donnie Benson**, Boating Equipment Co-Coordinator, 801-809-1854, [boatingcoordinator@wasatchmountainclub.org](mailto:boatingcoordinator@wasatchmountainclub.org)

## CLIMBING

**Stephanie Stamm**, Climbing Co-Director, 973-945-3755, [climbingdirector@wasatchmountainclub.org](mailto:climbingdirector@wasatchmountainclub.org)  
**Nathan Chaffee**, Climbing Co-Director, 307-371-6356, [climbingdirector@wasatchmountainclub.org](mailto:climbingdirector@wasatchmountainclub.org)  
**Shane Wallace**, Canyoneering Coordinator, 801-400-6372, [canyoneeringcoordinator@wasatchmountainclub.org](mailto:canyoneeringcoordinator@wasatchmountainclub.org)

## CONSERVATION

**Dennis Goreham**, Conservation Director, 801-550-5169, [conservationdirector@wasatchmountainclub.org](mailto:conservationdirector@wasatchmountainclub.org)  
**Brad Yates**, Backcountry Access Coordinator, 801-592-5814, [backcountryaccesscoordinator@wasatchmountainclub.org](mailto:backcountryaccesscoordinator@wasatchmountainclub.org)

## HIKING

**Frank Bouchard**, Hiking Co-Director, 352-246-5304, [hikingdirector@wasatchmountainclub.org](mailto:hikingdirector@wasatchmountainclub.org)  
**Tali Brenner**, Hiking Co-Director, 312-405-9930, [hikingdirector@wasatchmountainclub.org](mailto:hikingdirector@wasatchmountainclub.org)  
**Daisy DeMarco**, Trails Maintenance Coordinator, 610-517-7867, [trailscoordinator@wasatchmountainclub.org](mailto:trailscoordinator@wasatchmountainclub.org)  
**Daisy DeMarco**, Trail Reporting Coordinator, 610-517-7867, [trailreport@wasatchmountainclub.org](mailto:trailreport@wasatchmountainclub.org)

## SOCIAL

**Giulia Roselli**, Social Co-Director, 801-809-6133, [socialdirector@wasatchmountainclub.org](mailto:socialdirector@wasatchmountainclub.org)  
**Leigh Maier**, Social Co-Director, 703-408-5304, [socialdirector@wasatchmountainclub.org](mailto:socialdirector@wasatchmountainclub.org)  
**Chase Tharp**, Social Co-Director, 801-891-6908, [socialdirector@wasatchmountainclub.org](mailto:socialdirector@wasatchmountainclub.org)

## WINTER SPORTS

**Kathleen Waller**, Winter Sports Director, 801-859-6689, [skiingdirector@wasatchmountainclub.org](mailto:skiingdirector@wasatchmountainclub.org)  
**Lisa Verzella**, Skiing Coordinator, 801-554-4135, [skiingdirector@wasatchmountainclub.org](mailto:skiingdirector@wasatchmountainclub.org)  
**Akiko Kamimura**, Snowshoeing Coordinator, [snowshoeingcoordinator@wasatchmountainclub.org](mailto:snowshoeingcoordinator@wasatchmountainclub.org)

## TRUSTEES

**Michael Budig**, Trustee (2023-2027), 801-403-7677, [Trustees@wasatchmountainclub.org](mailto:Trustees@wasatchmountainclub.org)  
**Cheryl Soshnik**, Trustee (2024-2028), 435-649-9008, [Trustees@wasatchmountainclub.org](mailto:Trustees@wasatchmountainclub.org)  
**Julie Kilgore**, Trustee (2025-2029), 801-244-3323, [Trustees@wasatchmountainclub.org](mailto:Trustees@wasatchmountainclub.org)  
**Greg Libecchi**, Trustee (2026-2030), 801-699-1999, [Trustees@wasatchmountainclub.org](mailto:Trustees@wasatchmountainclub.org)  
**John Veranth**, Trustee emeritus, 801-278-5826, [Trustees@wasatchmountainclub.org](mailto:Trustees@wasatchmountainclub.org)



## IN THIS ISSUE

- 4 Historian's Message
- 6 The Wasatch Mountain Club Outdoor Access Fund at Westminster University
- 7 Welcome New & Returning Members
- 7 Thank You February Activity Organizers
- 8 Activity Reports
- 23 Activity Calendar
- 31 50 Years Ago in the Rambler

### ON OUR COVER:

Paula McFarland concentrating on the downclimb in Kong. Photo by Kim Murphy. See page 20 for details.



### ON OUR BACK COVER:

The gang goofing off after a big, glorious day on Estrellita and Razor Blade Ridge. See page 9 for details.



The Wasatch Mountain Club is an outdoor recreation club for adults dedicated to fostering awareness of the scenic beauty of the Wasatch and encouraging preservation of our natural areas. Club activities include hiking, backcountry skiing/snowboarding, backpacking, camping, conservation, trail maintenance, canoeing, climbing, canyoneering, kayaking, mountaineering, mountain biking, road biking, river rafting, socializing, snowshoeing and multi-day adventures.

[wasatchmountainclub.org](http://wasatchmountainclub.org)  
[info@wasatchmountainclub.org](mailto:info@wasatchmountainclub.org)

The Rambler (USPS 053-410) is published monthly by the Wasatch Mountain Club. Subscription rates of \$12 per year are paid for by membership dues only. Periodicals Postage Paid at SLC, Utah. 1390 South 1100 East #103, Salt Lake City, UT 84105-2443.

### CHANGE OF ADDRESS/

**MISSING RAMBLER:** Login to the WMC website and update your Personal Information or email [membershipdirector@wasatchmountainclub.org](mailto:membershipdirector@wasatchmountainclub.org) with your new address or to request a replacement Rambler. This publication is not forwarded by the Post Office. Allow 45 days for address changes.

**POSTMASTER:** send address changes to:

The Rambler, Membership Director, 1390 S 1100 E, #103, Salt Lake City, UT 84105-2462

Copyright 2026 Wasatch Mountain Club



## Historian's Message

by Debra Frank

### BOOK PRE-ORDERS

By the time you read this (fingers crossed) the WMC Centennial book should be at the printer, and soon after, a shipment will be dispatched to Salt Lake City. The club is taking pre-orders! If you're local, please contact either Julie Kilgore or me (debwfrank@gmail.com) and we'll give you Julie's Venmo info. Cost is \$30 in advance, \$35 after publication. (Non-local orders can be placed on my website debrawilsonfrank.com where we will ship it to you.)

### ADDITION TO ROBERT MYERS' REMEMBRANCES

One of the contributions to last month's tribute to Robert Myers, was inadvertently left out of the issue. Paul Horton sent this photo, taken at Wind Rivers:



### WE'RE GONNA DO WHAT THEY SAY CAN'T BE DONE

(Jerry Reed and Deena Kaye Rose; recorded for the "Smokey and the Bandit" movie soundtrack.)

Last month I talked about the book's title, Faint Heart Never Climbed Mountain, which comes from O'Dell Petersen of Pete's Rock fame. The title reflects a persistent theme in the club history: Bravado! Here's an excerpt from the Boating chapter wherein our club

members take their homemade kayaks down a river famous for being un-runnable.

Kayaking Cross Mountain Canyon, August 8–9, 1965

Bruce Christenson has seen many rivers, but none as turbulent and obstacle-ridden as Cross Mountain Canyon, located near the Utah-Colorado border. In its first mile alone, it drops one hundred feet, and in the next two, eighty more. And during all that dropping, the "rock problems" come fast and furious. Unforgiving rock problems. Precise kayak maneuvering required—no room for error.

After taking on several humongous rapids, Bruce has had enough. He's now bypassing them, either pulling his kayak along the gentler water near the bank (lining) or pulling his kayak out of the river entirely and walking to a calmer stretch (portaging).



But as Bruce is lining his kayak to avoid yet another violent rapid, the water's force tears the boat from his grasp and sends it hurtling toward the middle of the channel. He watches helplessly as it lodges precariously between two boulders.

The Cross Mountain Canyon adventure was Cal Giddings' idea. Cal, a buddy of Bruce's, had become intrigued by the river while on his first rafting trip at Dinosaur National Monument in 1954—when the guide “looked back up the Yampa to Cross Mountain ... and muttered almost inaudibly that no one had ever run it.”

No one had ever run it. The guide's comment became a challenge to Cal—an invitation. If Cross Mountain couldn't be run, well then, Cal would have to run it. He set about learning the sport, tackling rivers near and far, building his skills. Through the WMC and his chemistry professorship at the University of Utah, he found other river enthusiasts, including Alexis Kelner, his lab employee and former student, who introduced him to Bruce. The two had met in a math class.

In 1960, Cal enticed Bruce to participate in a Cross Mountain expedition, with Alexis signing on as photographer. But first, they needed kayaks. Where you or I might check out options online or visit REI, these three did something unusual even for 1960. They made their own boats.

[I'll leave it there for now! But this is one of many thrilling stories you can look forward to in the book.]

When I heard about our club members' Cross Mountain Canyon kayaking trip, I knew it was one for the book.



## DO THE BOOK. LIVE THE LEGACY

Our very first “Do the Book; Live the Legacy” event is on our Activity Calendar this month! Check out Julie Kilgore's Yellowstone Bike Ride on page 25. First introduced in 2012, the now-classic annual ride takes place before the park opens to motorized vehicles. This means bikes have exclusive access to the roads—unless a herd of bison gets in the way! In 2013, our riders faced a wooly blockade—which made for a suspenseful story in *Faint Heart Never Climbed Mountain*. It also introduced our



fair-weather cyclists to the pleasures of biking in winter conditions. (Spoiler alert: everyone survived unscathed.)

Coming soon: Watch this space for more “Do the Book” events!



## The Wasatch Mountain Club Outdoor Access Fund at Westminster University

Building on the success of the WMC Endowed Scholarship with the University of Utah, which is well funded and awards scholarships every year, we are excited to announce another opportunity to expand our influence and generational impact. WMC is partnering with Westminster University to establish a new endowment to support Westminster’s Outdoor Program, which provides opportunities for all Westminster students to access outdoor experiences.

The new endowment will reduce the financial barrier of trip costs, expanding access to the outdoors, fostering stronger community connections and leadership opportunities, and increasing participation among first-generation college students.

The endowment minimum is \$25,000 (\$5,000 pledged over 5 years). To support this exciting program, go to <https://www.wasatchmountainclub.org/centennial-education-endowment>



### About the Westminster University Outdoor Program

Through meaningful, student-led outdoor experiences, Westminster’s Outdoor Program provides opportunities for students to experience hiking, skiing, mountain biking, rock climbing, and more in the local Wasatch Mountains. Additionally, the program takes students to Utah’s red rock deserts, wild rivers, and vast wilderness areas to help students integrate their classroom learning with the world around them while developing technical skills, self-awareness, character, and stewardship.



# WELCOME

## *New & Returning Members*

<b>April Jorgenson</b>	<b>Corey Vandenberg</b>	<b>Laurie Joseph</b>
<b>Austin Glead</b>	<b>Daniel West</b>	<b>Mara Green</b>
<b>BreeAnna Holdaway</b>	<b>Douglas Thompson</b>	<b>Miriam Bugden</b>
<b>Brett &amp; Traci Thompson</b>	<b>Emily Eckart &amp; Thomas Luo</b>	<b>Paige Kraus</b>
<b>Bruce Behymer</b>	<b>Forrest Schwyn</b>	<b>Sandra Ferrari</b>
<b>Cameron Woolf</b>	<b>Giorgio Scorzelli</b>	<b>Sara Ward</b>
<b>Carolyn Perkins</b>	<b>Grace McEachern</b>	<b>Stephanie Furrer</b>
<b>Carrie Fuller</b>	<b>Grant Grondel</b>	<b>Thomas Cooper</b>
<b>Catherine Kraning</b>	<b>Jack Cook</b>	<b>Tommy Jones &amp; Camila Guerrero</b>
<b>Chad Larson</b>	<b>Jennifer &amp; Brandon Tolman</b>	<b>William Thibeault &amp; Sally Golla</b>
<b>Christopher Brechbill</b>		
<b>Christopher Cardinali</b>	<b>Keri &amp; Scott Lostetter</b>	

## Thank You February Activity Organizers!

*We appreciate you for your leadership, energy, and time for organizing amazing activities for our members*

Akiko Kamimura	Ingrid Middleton	Michael Berry
Amanda Mavy	Jennifer Arce	Nathan C
Barb Gardner	Jerry Turner	Paige Kraus
Brad Yates	Jim Kucera	Paul Gettings
Christine Pilgram	John Richardson	Reid Gardner
Da Yang Wipfel	Jose Pacheco	Rob Parker
Daniel Hadley	Julie Kilgore	Robert Turner
Dave Ashley	Kathleen Waller	Shane Wallace
David Tanner	Katie Foster	Sid Seligson
Don Tillman	Kay Tran	Steph Stamm
Eve Kovacs	Kerry Regan	Steven Duncan
Frank Bouchard	Kevin Earl	Steven Eyberg
Gail Coates	Luke Johnson	
Giulia Roselli	Mac Brubaker	



# Activity Reports

## Multi-Pitch Ice Climbing Training - Jan. 24, 2026

Organized and report by Akiko Kamimura

NOTE: Akiko organized an Ice Climbing Training activity on January 19 which was featured on page 17 of the March Issue of the Rambler. It was incorrectly titled "Multi-Pitch Ice Climbing Training". It should have merely been titled "Ice Climbing Training". This report covers Akiko's **Multi-Pitch** Ice Climbing Training that was held on Jan 24, but inadvertently omitted from the March issue). Participants: Akiko Kamimura, Piere Alexander, Tracy Omega, Eric List, Matt Moffet and Garrett Whearton.



Tracy and Piere

Six climbers practiced multi-pitch ice climbing with instructors from the School for International Expedition Training (a nonprofit organization) to prepare for 2026 and/or 2027 Bolivia expeditions. The practice location was the Great White Icicle in Little Cottonwood Canyon. Since this is a popular ice climbing destination, there were other climbing groups. This is a four-pitch route. We did multi-pitch climbing for the first two pitches and top-roping for the third pitch. We did not do the fourth



Matt keeping the ropes straight



Finally ready to rappel



Eric climbing, Garrett belaying

pitch. This was great practice, especially for those who will go to Bolivia this year, because this route somewhat resembles one of the routes that we will climb.



Pierce

# Rock Climbing in El Potrero Chico, Mexico - Feb. 9-15, 2026

## Organized and report by Steph Stamm

Participants: Tali Brenner, Bryan Mason, Alonso Gonzales, Paul Gettings, Tim McBride, Yanli Jiang, Nathan Chaffee, Steph Stamm

Most of us coalesced in El Potrero Chico on Sunday, February 8th and immediately set out to climb. We warmed up on some mellow single pitch in the shade of Wonder Wall and Cat Wall — which required hopping a fence that gated off a not-in-season water park. After a few hours, energy running high, we decided to jump into multi-pitch



Bryan and Nathan having a ball on Buzz Rock's Five Pitch Harmony, 5.9



Steph, Tali and Alonso in the fading light at the top of Buzz Rock's 5-pitch Sphincter Squeeze, 5.9



Nathan at one of the few good stopping points on Razor Blade Ridge

on **Buzz Rock** - one of the first cliffs you encounter on your way into the park.

Several sent the five-pitch **Sphincter Squeeze**, with another team climbing in parallel on **Five Pitch Harmony**. The final team rappelled in the dark by headlamp, while the teams ahead thoughtfully ordered support margaritas and guac in advance of their arrival. We were all riding a huge high from the day and started eagerly planning our next sends. A guide from Mexico City, Ulises, joined the crew and offered excellent beta all week. His verdict: the 12-pitch **Estrellita** was a must-do. We met at 7 a.m. the following morning, unanimously stoked for a long day (even Paul who had arrived at 9 pm the previous evening). Most of us headed toward Estrellita, while a duo, Nathan and Bryan, ventured onto the 5.6 R adventure trad climb **Razor Blade Ridge**.

**Estrellita** opened with a couple of spicy 5.9 pitches that made us briefly question our ability to survive the later 5.10+ terrain. But we pushed through with minimal screaming, maximal fun (or maybe it was the other way around) and topped out beside the lone palm tree that improbably lives up there. Rappelling down, we finally caught up with the **Razor Blade Ridge**



One of our favorite post-climb hangout for Tecates and guac



Tim and Yanli triumphant at the top of 12-pitch Estrellita 5.10 b/c



Steph on top of the world after tag-teaming Ramsey's Shenanigans with Tali—three pitches of 5.10a fun

team, pausing for a well-earned lunch following a thousand feet of cactus hopping and wildly exposed chossaneering. After descending the loose gully that forms the bottom of the Los Lobos Wall, we beelined for celebratory Tecates and guac posing for photos at the iconic EPC gate before wandering to Leo's for all-you-can-eat chicken or pork with nopales, rice and, beans.

Wednesday delivered our toughest approach: 30+ minutes traversing an exceptionally steep and loose "trail" that devolved into 3rd-class scrambling. The reward? Classic moderate multi-pitch climbs like **Thunderbolt, Excalibur, and Rock Hard Weekend**. That evening we ventured into the town of Hidalgo for dinner, incredible churros, and a pop up flea market.

Thursday, most of the group summited the iconic spires via **Crack Test Dummies** (5.9), earning an unbeatable bird's-eye view of the valley below. Another team, recovering from a few hard-charging days, opted for sunny laps on **Mota**



Dream team Steph and Tali at the top of 3-pitch Ramsey's Shennanigans, 5.10a

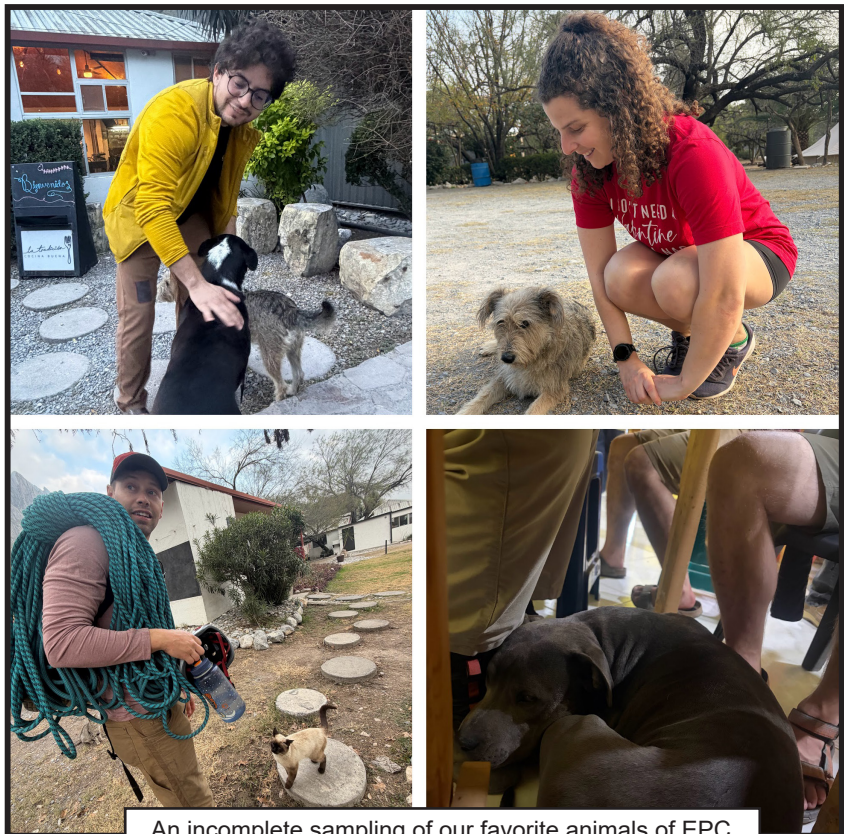
**Wall** — mostly single pitch, plus the three-pitch **Cactus Pile** (5.10b).

By Friday, clouds rolled in during the morning before the heat returned, and several folks opted for climbing multi-pitch on the south-facing **La Selva (Jungle Wall)**. When we'd had enough thrashing on hot rock, we retreated back to the shadows of **Wonder Wall** for chill single-pitch moderates. A few of us squeezed in one last three-pitch 5.10a, **Ramsey's Shenanigans**. We closed the night with one final feast at Leo's and farewell Tecates at Tim and Yanli's Airbnb.

Friday night spelled trouble for Steph, who was struck down with a wicked case of food poisoning. She spent Saturday poolside, fully horizontal, armed with a book and bubbly water, while others rallied for last hurrahs - including another lap up the famous spires. We rounded out the trip at Hobbit Pizza and said our farewells.

By the next morning, Paul had also succumbed to food poisoning, so also got to enjoy a day poolside before heading home. For the rest of us leaving Sunday, the taxis and flights were smooth - and Nathan's turn with the stomach bug waited considerably until the second he walked through his own front door. When we weren't

climbing our hearts out, the quieter moments of our days were punctuated by befriending stray dogs, sneaking scraps to stray dogs, taking photos with stray dogs and even some stray cats (when they weren't being chased by the stray dogs), and giving everyone scratches while trying to avoid fleas. We also enjoyed chatting and climbing with locals from Monterrey (Juan Carlos and Arturo) as well as fellow American and Canadian climbers. We gorged ourselves on tacos, demolished chips and guac like they were going out of style, and downed spicy margaritas after long, glorious days on the wall. In short, we shared an unforgettable week of stone, sunshine, and friendship in a truly special place.



An incomplete sampling of our favorite animals of EPC



# Wolf Creek Beacon Park Skiing - Feb. 14, 2026

Organized and report by Kathleen Waller

Participants: Kathleen Waller, Greg Clark, Sid Seligson, Maegan Dillman, Chris Manna



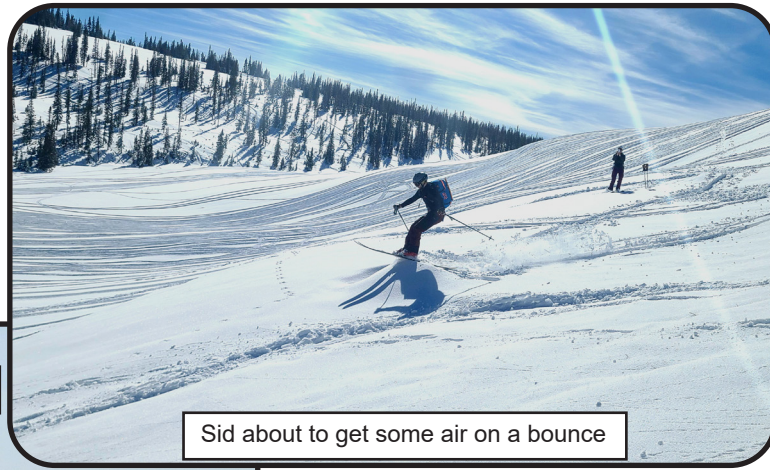
Maegan probing for the second of three buried beacons

We started the day at the new beacon park in Wolf Creek. We took turns looking and probing for three buried beacons. This was a good chance to practice the multi-burial functionality of our transceivers. We then did a full departure and transceiver check before heading into the hills. We began with a short, low-angle drop in the trees above the



Chris and Sid at the new beacon park at Wolf Creek

campground. The new snow was perfect in texture and density. We then ascended lookers left of Wolf Creek Bowl and headed to Neeley Bowl. We used OnX and Caltopo with custom layering to find a low-risk line into the bowl that avoided the steep headwalls. The drop was soft and creamy. We headed back to Wolf Creek bowl and the group got two drops



Sid about to get some air on a bounce



The group checking out a distant slide along Duchesne Ridge

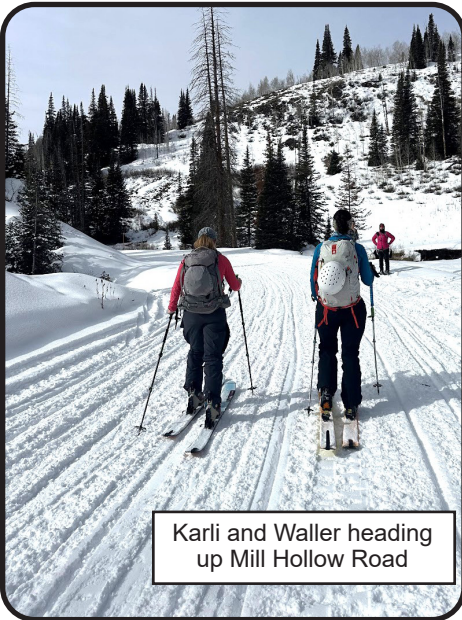
with some air time off kickers before heading back to the cars. Lunch was enjoyed at Mirror Lake Diner with Chris and Sid putting down monstrous burritos.

# Mill Hollow Skiing - Feb. 15, 2026

Organized by Gail Coates, report by Kathleen Waller

Seven skiers (Sharon Vinnick on Telemark, Tyler Kemnic and Lisa Verzella on splitboards, and Kathleen Waller, Neil Schmidt, Karli Wilson and Shuang "Tina" on ATs) departed onto Mill Hollow Road at the same time as Gail's snowshoe group.

The snowshoe group headed for the reservoir while the ski/splitboard group broke from the road about half way and merged onto a less-used forest road. We soon entered an area with no sign of human travel and began taking turns putting in a skin track. We encountered one stream crossing and brave Karli was the first to cross. Tina got to lead for a while for her first time and did a great job putting in an uptrack. The group was very cohesive and worked together to navigate the area and make good group decisions. We ascended about 1500 feet to the top of a knoll with views of Neeley basin to the east and distant views of the Mirror Lake area peaks. We ripped skins and dropped into creamy snow and powder between pines and aspens on a north/north-west facing line. Back at the road, we slid with very little effort to the cars and headed to the Mirror Lake Diner to meet back up with the snowshoe group. We started the tour with a full AIARE de-



Karli and Waller heading up Mill Hollow Road



Tyler taking his turn toward the front of the skin track



Sharon and Lisa navigating the stream crossing.

parture check (Gear, Plan, Communication, and Transceiver Check). We ended the day with an AIARE debrief at the diner. Waller asked the group to consider the following question, "Did we have a good day because we made good choices or because we got lucky?" The group agreed it was a great day and the great day was a result of good planning, good group dynamics, and good decisions.

Karli, Tyler, Tina, Sharon, Waller, and Lisa at the top



# Yellowstone Wildlife Watch - Feb. 21-24, 2026

Organized by Julie Kilgore and Robert Turner. Report by Ben Wake

Participants: Amy Zirkle, Christopher Dege & Stephanie Wilcock, John Gould, Rodney Collins, Diane Christensen, Ray & Brenda Daurelle, Ben Wake, Al & Sandra Berzinis, Robert Turner, Danielle Carter, Julie Kilgore, and Jamie and Andrew Nolan.

The jet from SLC to Bozeman, MT was leaving. All the passengers had boarded and the last call was about to go out before they shut the gate. And still no Julie. Having organized the annual Yellowstone Wildlife Watch activity for over 15 years, Julie knew exactly what to do to make it run smoothly. Something must have happened. Do we have a Plan B without Julie? Just at the last second, loaded down with a burgeoning pile of carry-on luggage, Julie and her daughter and a feisty two-year old careened into the gate looking like they had just run a 4-minute mile. The two-year old, with his binkie firmly trapped in his mouth, was draped over his luggage, clutching it like a kid on a sheep at a rodeo. Long story short – the TSA had not been at their finest hour, obsessing over an inconsequential error that could have been resolved in a minute.

And so the trip began. Others were making the 8-hour drive in excellent weather to the charming town of Gardiner, MT. The Absaroka Lodge, nestled above the Yellowstone River, would be HQ for the next 4 days.

Every year the WMC has the entire lower level to themselves. The hallway is where the dinners and the camaraderie are created. The itinerary is very much like a safari – you go out in vehicles in the mornings and late afternoon. What you do during the middle of the day is wide open. There are options for cross county skiing, snowshoeing, hot-tubbing, snow coaches and a host other fun things you can hook into at the Mammoth Lodge. The viewing route is a 55-mile highway that

courses through the northern border of Yellowstone, running east out of the west entrance in Gardiner and ending up just outside the east entrance at the little town of Silver Gate. The last third of the drive cuts through the Lamar Valley, considered to be the Serengeti of the west.

Wildlife is spotted



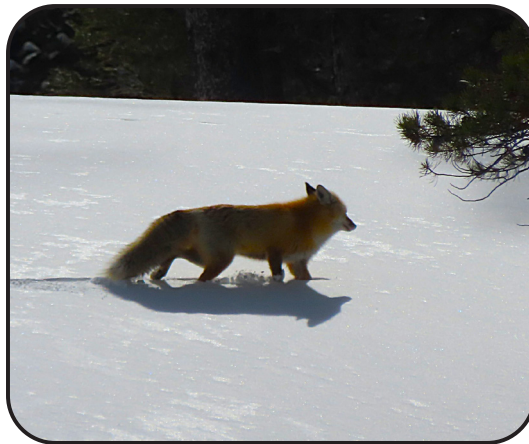
Chris Dege, Stephanie Wilcock and Sandra Berzini enjoying a beautiful day

courses through the northern border of Yellowstone, running east out of the west entrance in Gardiner and ending up just outside the east entrance at the little town of Silver Gate. The





almost instantly, with bison being the predominate animal. You will also spot deer, pronghorns, moose, bighorn sheep, lots of elk, foxes, coyotes, eagles, and opinionated ravens. But the main prize is seeing wolves. In all the years



of this event, there has never been a time when wolves were not spotted. Some years they can be seen up close. On other occasions (like this year) they can only be sighted with powerful scopes. Our super power is co-organizer Robert Turner. Robert has been watching wolves before he and Julie began this annual tradition. He is in an elite group of "Wolf Watchers" that communicate on a daily basis with each other about their wolf sightings. If you have the self-control to get up a few hours before sunrise and brave the cold, you can team up with Robert and be assured of seeing wolves. The Wolf Watchers know generally where the wolves are. Once found, the Watchers line the side of the highway with vehicles, tripods and expensive Swarovski scopes and cameras. They may stay there all day. So those of us that are too lazy to get up at 5 AM still have a chance to see wolves if we can find the Watchers. They are very gracious and more than willing to let you peek at the wolves through their scopes. Some of the scopes are equipped with an attachment that allows the camera on your phone to capture the image seen on the scope. Others have high powered zoom lenses attached to SLR cameras. (This year the wolves were on a wooded hillside at least a



mile away. The wolf photos in this report were taken by Robert Turner on previous trips). Aside from the wildlife, other main attractions were Julie's dinners. On the second night she had three crockpots of pot roast. The hallway smelled delicious! The next night she had crockpots of soups made from veggies straight from her garden, e.g., tomato basil, pumpkin cream cheese and beef stew from last night's leftovers. Oh, did I

mention she also fixes up toasted cheese sandwiches to go along with the soup?

Julie was the first to arrive and the last to leave. In the morning, she was up before anyone else, putting out breakfast goodies for the early risers. She's out early

with the rest of us for the morning drive. Julie knows every inch of the 55-mile highway. Every turn has a story, little gems of information that she happily shares as we drive through her "sacred ground." In the afternoon she was busy making dinners. Somewhere in this schedule she finds a few hours to sleep.

This was my first Yellowstone Wildlife Watch trip. I had no idea Yellowstone could be so exciting in the winter.

The weather on the first full day was spectacular – warm with a bright blue sky against an endless carpet of sparkling snow. Other than the Watchers, you practically have the entire park to yourself. You can take your time, stop as long as you want and do whatever comes to mind. An unforgettable trip in one of the most amazing places on earth.

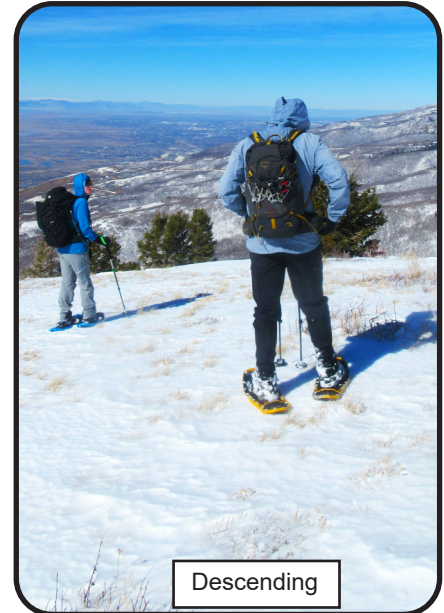
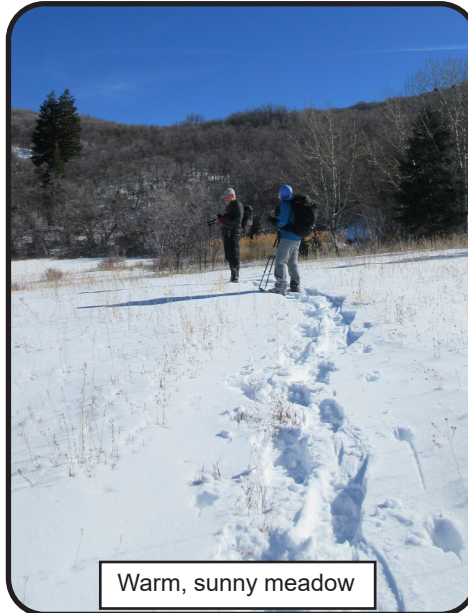


## Sessions Peak Snowshoeing - Feb. 22, 2026

Organized and report by Akiko Kamimura

Participants: Akiko Kamimura, Ed Hemphill, and Steph McGarvey

Right after the big snowstorm, the trail was covered with snow from the trailhead, though we did not put on snowshoes until we got to Christmas Tree Farm. While it was very nice to see lots of snow, it was difficult to take a faster pace. We made very good progress but ran out of time to make the summit of Sessions Peak (9,260 ft). We made our way to the place where the trail meets with Kenny Creek Trail. We had a wonderful view of Holbrook Peak and other mountains and enjoyed the nice weather.



## Soapstone Mountain Skiing/Snowshoeing via Iron Mine Trail - Feb. 22, 2026

Organized by Gail Coates and Paige Kraus, report by Kathleen Waller

Participants: Kathleen Waller, Gail Coates, Paige & Anthony Kraus, David & Jenny Dorsey, Joel Winter, Kristian Meland, Sharon Vinick, Neil Schmidt, and Maegan Wiliam.

With SR35 open and avalanche terrain firmly off the menu, our groups gathered at Nobletts ready for snowshoeing and backcountry skiing up the Iron Mine Trail toward Soapstone Mountain (9469 ft). The plan was simple: an out and back at a steady, inclusive pace with a firm 1:30 pm turnaround time. No set mileage, no pressure to reach a specific destination, just a good day in the mountains. The ski group's original objective had been in avalanche terrain that had slid two days earlier. A wise and safer alternative



Maegan, Kristian, and dog Lulu skinning and snowshoeing up the Iron Mine trail toward Soapstone pass



Neil, Kristian, Maegan, Sharon and dogs Lulu & Ikko

made for a fun and energetic combined outing. We began by heading directly up the hill via the Chevron crude pipe cut (not gently and not gradually, just up). The skiers, along with two enthusiastic snowshoers, took the lead and formed an efficient trail breaking crew. Their efforts made a noticeable difference. The rest of us followed in a second group, grateful beneficiaries of their hard work, moving at a conversational pace and taking in the beauty of the forest. The climb was steady,



Skiers and dogs working their way toward Soapstone Mountain



Is this fresh road kill?

steep, and persistent enough to make everyone reevaluate their life choices at least once. The higher we went, the more the views opened up, and the effort quickly felt worthwhile. At the top, we celebrated with snow angels, a snow depth check that came in at nearly half a Waller, and a round of snacks and beverages that felt essential. After soaking it in, we turned around and enjoyed the



Waller made the mistake of taking off both skis



Our group enjoying a break in a beautiful meadow

descent. For a brief and shining moment, the snowshoers held their own and even managed to outpace the skiers (held up by a necessary waxing session). That advantage did not last long. Once the skiers got waxed and organized, they disappeared through the trees and downhill. The snowshoers did not see them again. It was a beautiful, peaceful day in the Uintas. Smart decisions, strong trail breakers, solid climbing legs, and just enough friendly competition to keep things interesting. A successful outing topped off by the Diner stop where we ran into Mike Berry's Nordic crew and started planning our next outing.



# Zion Canyoneering - Feb. 27-29, 2026

Organized by Heidi DeMartis and Paula McFarland

Participants: Heidi DeMartis, Paula McFarland, Brent Megham, Joyclyn Mullen, John Knoblock, Kim Murphy, Tonya Karen, Terrie Gould, Dea & Phillip Nelson, Rachael Graham, and Amanda Lillie

There's a specific kind of magic that happens when the Wasatch winter fatigue meets the sudden, red-glow warmth of St. George. After months of holiday huddles and snowy commutes, 14 of us, a mix of Wasatch Mountain Club veterans and local Cedar City & St. George legends, descended upon Southern Utah for a weekend that defied the forecast. Originally, we had our eyes on the formidable "Fire and Ice." But as any seasoned canyoneering enthusiast knows, the desert dictates the schedule. We pivoted, and what followed were three days of pristine weather, dry potholes, and "secret" routes that reminded us why we suffer through the off-season.

**Day 1: Boltergeist (With Via Ferrata included)** We kicked things off with Boltergeist, but not the standard descent you'll find in the older guidebooks. Led by a local friend and expert adventurer, we explored a brand-new route. The beauty of a 14-person team of experienced canyoneerers is the efficiency. Despite the group size, the rope work was seamless. We bypassed the usual "haunts" for a fresh perspective on the canyon's sandstone ribs. No mud, no freezing pools - just sticky rubber on high-friction rock and the joy of a technical puzzle solved in the sun.



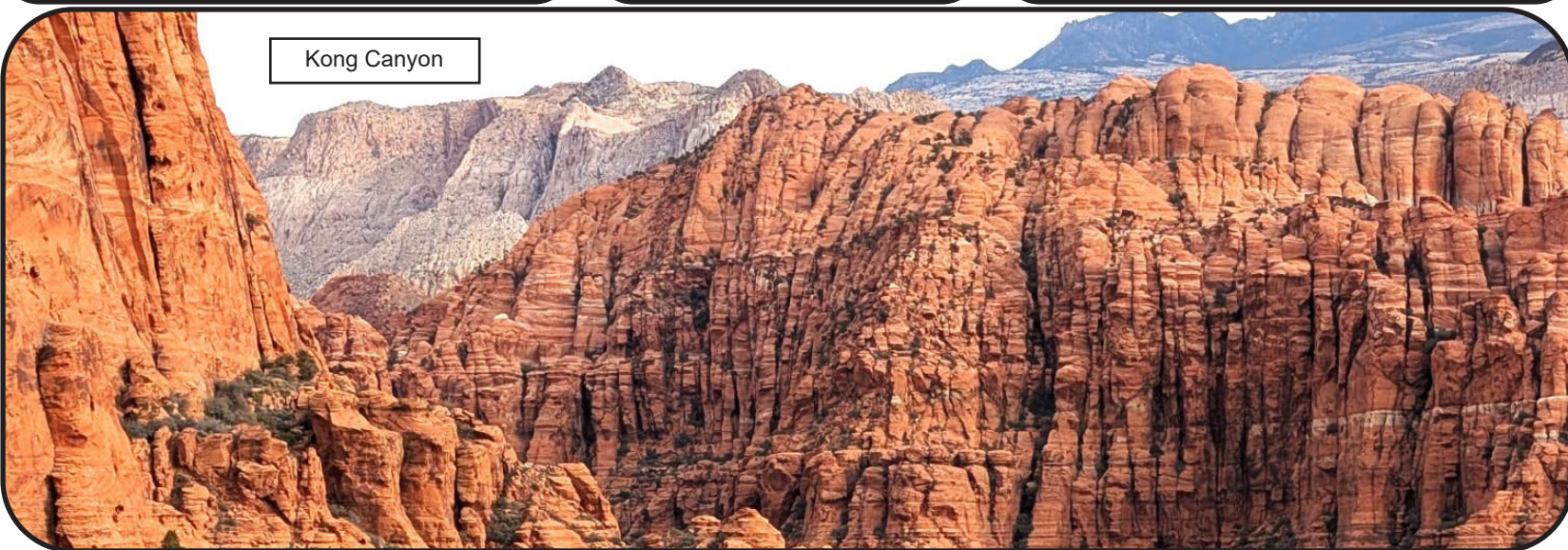
Rapelling in Boltergeist



Ascending Boltergeist



Traverse in Boltergeist

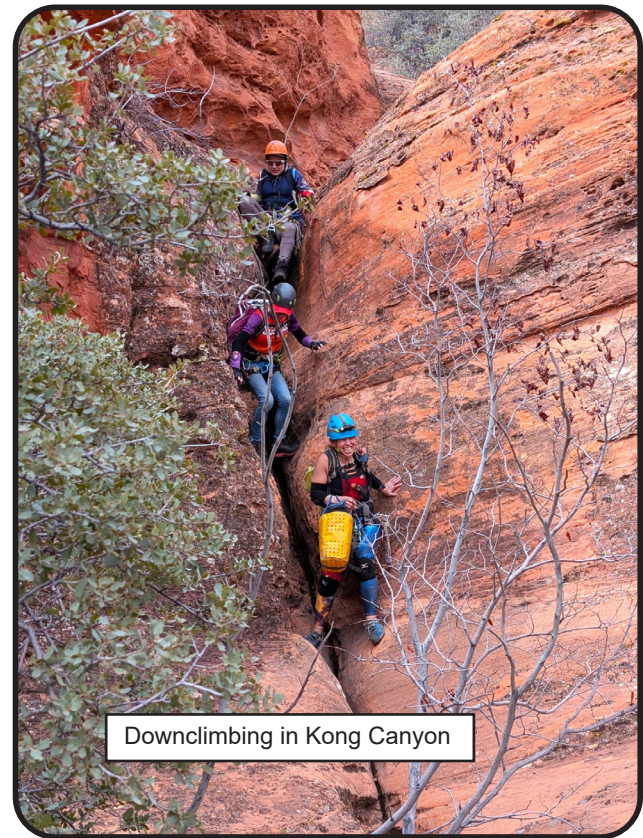


Kong Canyon

**Day 2: King Kong's Secret** If Day 1 was about exploration, day 2 was about the "inside scoop." King Kong is a classic for a reason, but our local guide Brent Mecham, treated us to a very secret route that felt like a VIP pass to the backcountry. Sharing laughs between rappels, it was easy to forget it was technically winter. The social energy was high; for many of us, this was the first time seeing one another since the snow started falling up north. The canyon walls echoed with stories from the holidays and plans for the coming season.



A gorgeous spot in Kong Canyon



Downclimbing in Kong Canyon

**Day 3: Crossing the Border to Canyon 55** We rounded out the trip by dipping into Arizona for Canyon 55. It's a spectacular stretch of terrain that feels wilder and more remote.

**More Than Just Technical Rappels** Canyoneering is often described by its technicality, the pull-offs, the anchors, and the gear. But this trip was a reminder that the "environment" isn't just the geology; it's the people. We came for the canyons, but we stayed for the community. Moving 14 people through technical terrain without a single hitch is a testament to the skill level of the WMC and our local partners. The weather was warm and dry. The vibes were all high-fives with no drama. The cherry on the dessert was the remarkable synergy between the WMC and the Cedar City crew. We left the desert with dusty gear, tired legs, and a renewed stoke for the adventures ahead.



Dea on Rappel



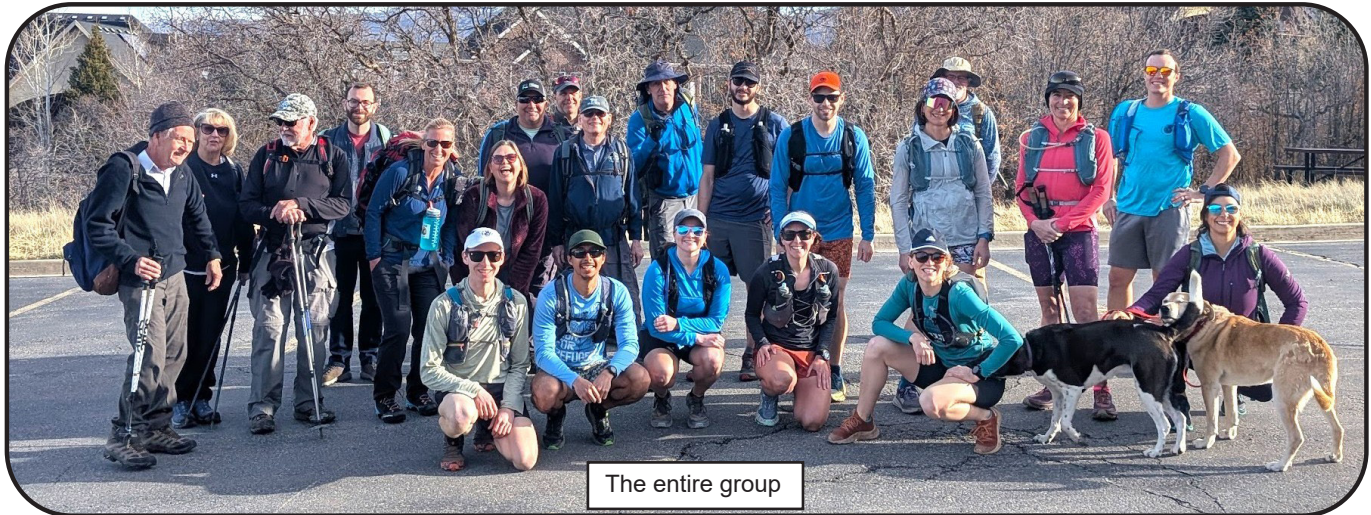
Heidi on zipline



# Wild Rose Trail Running/Hiking - Feb. 28, 2026

Organized & Report by Frank Bouchard

Two lively groups of WMC adventurers converged at the Wild Rose trailhead for a beautiful Saturday morning. After corralling everyone into a giant group photo, eleven took off on a 14-mile trail run while the other thirteen opted for a slower paced 6-mile hike. We reunited at the trailhead and caravanned to Santo Tacos to refuel on delicious authentic Mexican food.



The entire group



The hikers



The runners



I could sure use a taco right now



# Activity Calendar


WMC members should stay informed on current COVID guidelines. Those who are not feeling well, whether COVID symptoms or other illness, should not participate in WMC activities. During a club activity, the use of face masks or carpooling is up to each individual, unless otherwise specified by the organizer. Organizers can opt for a group size they are comfortable with, except for the group size limit of 10 in wilderness areas.

Apr 1 Wed	<p>Early Morning Rock Climb: Momentum Millcreek – ntd  <i>Meet:</i> 6:00 am at Momentum Indoor Climbing Millcreek (3173 E 3300 S, Salt Lake City, UT)  <i>Organizer:</i> Akiko Kamimura kamimura@umich.edu                      I will be at Momentum Indoor Climbing Millcreek approximately from 6 am to 7:30 am. You are welcome to join me. There aren't many people there early morning. So it should be easy to find me. *I have three free day passes in addition to a buddy pass per month. Please let me know if you want to use it.</p>
Apr 1 Wed	<p>Trail Running - Popperton Trailhead – 6.0 mi Out &amp; Back – 1000' ascent – Fast pace  <i>Meet:</i> 6:30 pm at Popperton Trailhead  <i>Organizer:</i> Kerry Regan 954-895-8627 kerrylregan@gmail.com                      Spring is here and trail running is in season! This will be a no drop run, no runner is left behind. All levels of fitness are welcome. Bring a headlamp. It's a great run for anyone who is looking for running partners or is new to trail running. Let me know if you want to join this run or others in the future. Message me if you want to arrange carpool.</p>
Apr 3 Fri	<p>Early Morning Rock Climb: Momentum Millcreek – ntd  <i>Meet:</i> 6:00 am at Momentum Indoor Climbing Millcreek (3173 E 3300 S, Salt Lake City, UT)  <i>Organizer:</i> Akiko Kamimura kamimura@umich.edu                      I will be at Momentum Indoor Climbing Millcreek approximately from 6 am to 7:30 am. You are welcome to join me. There aren't many people there early morning. So it should be easy to find me. *I have three free day passes in addition to a buddy pass per month. Please let me know if you want to use it.</p>
Apr 3 Fri	<p>Rock Climb - Indoor Evening Climbing Momentum Ft Union  <i>Meet:</i> 6:30 pm at Momentum Indoor Climbing Fort Union (7210 Union Park Ave, Midvale, UT)  <i>Organizer:</i> Paul Gettings 801-599-7311 p.gettings@gmail.com                      Let's keep climbing indoors during the week to stay strong for the spring. WMC members without a membership to Momentum can get a reduced priced day pass. You may be asked to prove your membership in the club. If you don't see anyone when you arrive, look through the top rope and bouldering areas for someone in a shirt with the WMC logo. All skill levels welcome.</p>
Apr 3 Fri	<p>Trail Running - Terrace Hills Trailhead Beginner Trail Run – ntd – 4.0 mi Loop – 600' ascent  <i>Meet:</i> 6:00 pm at Terrace Hills Trailhead (1021 Terrace Hills Dr, Salt Lake City, UT)  <i>Organizer:</i> Kerry Regan 954-895-8627 kerrylregan@gmail.com                      Join us for a beginner run for all of those that are trail run curious (experts welcome too). This will be a no drop run, no runner is left behind. All levels of fitness are welcome. Bring a headlamp. If you have been wanting to get into trail running but don't know where to start, this run is for you! Let me know if you want to join this run or others in the future. Message me if you want to arrange carpool.</p>
Apr 4 Sat	<p>Snowshoe (Ski/Hike) - Location TBA – mod+ – Moderate pace  <i>Meet:</i> Register with the Organizer  <i>Organizer:</i> Akiko Kamimura kamimura@umich.edu                      We plan to snowshoe in BCC/LCC, Provo, Farmington, American Fork, the West Uintas or somewhere, weather, conditions and situation permitting. The specific location will be posted when it gets closer to the date. Please bring 10 Essentials, microspikes, and snowshoes. In addition, bring poles and gaiters if there is sufficient snow for snowshoeing. Avalanche beacon, probe &amp; shovel are recommended but not required. If this changes, I will update the information. I have an extra set of avalanche beacon, probe &amp; shovel - if you want to use it, please let me know. Depending on a location, we can have skiers too. Skiers must carry avalanche beacon, probe &amp; shovel. If there is not enough snow, we will hike. Please email before Friday, 6 pm, April 3, for the meeting place and time. Registration is required. Registration priority will be given to WMC members. Registrants will receive more detailed info. Limit 8.</p>
Apr 4 Sat	<p>Trail Running - Run From Hidden Valley Trailhead – 12.0 mi Out &amp; Back  <i>Meet:</i> Register with the Organizer  <i>Organizer:</i> Kerry Regan 954-895-8627 kerrylregan@gmail.com                      We will be running from Hidden Valley Trailhead to Corner Canyon and back. This is a great run with rolling terrain that is quite runnable in almost any weather. Expect some mud, some ice, and maybe some snow. Bring microspikes, snacks and an extra layer. Please email me directly if you are interested in joining or if you have any questions.</p>
Apr 4 Sat	<p>Bike Maintenance &amp; Tune-Up – ntd  <i>Meet:</i> 11:00 am at Wasatch Environmental (2410 California Ave, Salt Lake City, UT)  <i>Organizer:</i> Robert Turner 801-560-3378 r46turner@gmail.com                      It is time to make sure our bikes are properly cleaned and tuned for pleasant and trouble free riding! Join us for this bicycle maintenance and tune-up session. This is for EVERONE. If you want a clean, well-tuned bike we encourage you to join us. It doesn't matter whether you know everything about bike maintenance and tune-ups, nothing about it or are somewhere in between. Just come. Here is what we will do: (1) Inspect our bikes, secure bolts, clean and lubricate key components (e.g., the chain). (2) Adjust brakes and derailleurs (3) Cover other topics you might want to know about, such as flat tire repair, if we have enough time and interest. At the end, you will have a sparkling clean bicycle that is safe to ride, properly lubricated and adjusted so it shifts well, and the brakes stop you effectively. Plus, if you don't already know how to do those things, you will by the time the session is done. If you have knowledge, tools, and supplies already, please come and bring them to help others that need it, especially a bike stand and tools if you have them, plus buckets, rags, brushes, chain cleaners, etc. We will meet at Julie Kilgore's workplace, Wasatch Environmental, where we'll have plenty of space, a hose and other essentials.</p>
Apr 4 Sat	<p>Tetzlaff Peak In The Silver Island Range Day Hike – mod – 4.0 mi Loop – 1934' ascent – Moderate pace  <i>Meet:</i> 7:00 am at UTA Park and Ride lot at 221 West 2100 South in SLC  <i>Organizer:</i> Donn Seeley 801-706-0815 donn@xmission.com                      Tetzlaff Peak (6267 ft) is named after the race car driver Teddy Tetzlaff, who set a world land speed record of 143 mph at the Bonneville Salt Flats in 1914. The peak is northeast of Wendover on the west side of the salt flats. This steep, off-trail loop has some fun, easy scrambling on quartzite (and a tiny bit of exposure just before the summit). And don't miss the cubical goethite crystals that look like black dice.</p>



Apr 5 Sun	Snowshoe/ Hike - Holbrook Peak, Bountiful – mod+ – 9.0 mi – 3500' ascent – Moderate pace <i>Meet:</i> Register with the Organizer <i>Organizer:</i> Akiko Kamimura kamimura@umich.edu We plan to snowshoe/hike to Holbrook Peak (8722 ft), weather, conditions and situation permitting. Please bring 10 Es and microspikes. If there is still snow, please bring snowshoes too. Depending on conditions, this activity may be a hike. Avalanche beacon, probe & shovel are not required. Please email before Friday, 6 pm, April 3, for the meeting place and time. Registration is required. Registration priority will be given to WMC members. Registrants will receive more detailed info. Limit 8.
Apr 5 Sun – May 20 Wed	Mountaineering: Makalu (27,838 Ft) Nepal, One Of The 14 8,000 Meter Peaks – ext <i>Meet:</i> Register with the Organizer <i>Organizer:</i> Dave Ashley, Shelley Johannesen 703-966-9741, 804-874-7658 david.ashley.vet@gmail.com, johannesenshelley@gmail.com Dave and Shelley are offering to lead this 8,000 member peak expedition along with our trusted guide company in Nepal to WMC members at our cost, with all registration fees to the local guide company. The trek into, and time at, base camp is much more fun with others and more people lowers the per person cost. Our normal price is \$24,999, the at cost price is \$22,000. Prior experience is required, please contact us for details and the \$2,999 discount registration code for WMC members! See event listing on website for more details.
Apr 6 Mon	Early Morning Rock Climb: Momentum Millcreek – ntd <i>Meet:</i> 6:00 am at Momentum Indoor Climbing Millcreek (3173 E 3300 S, Salt Lake City, UT) <i>Organizer:</i> Akiko Kamimura kamimura@umich.edu I will be at Momentum Indoor Climbing Millcreek approximately from 6 am to 7:30 am. You are welcome to join me. There aren't many people there early morning. So it should be easy to find me. *I have three free day passes in addition to a buddy pass per month. Please let me know if you want to use it.
Apr 6 Mon	Dog Friendly Evening Hike - Ferguson Canyon To The Overlook – mod- – Out & Back <i>Meet:</i> 5:45 pm at the Ferguson Canyon Trailhead (7721 Timberline Drive), then shift to the overflow parking area if needed. <i>Organizer:</i> Julie Kilgore 801-244-3323 jk@wasatch-environmental.com This is a nice shoulder season hike before the summer heat sets in.
Apr 7 Tue – Apr 13 Mon	Alpine Ski Tour - Norway Ski And Sail Lyngen 7 Days Trip Is Full – mod+ – Out & Back <i>Meet:</i> Register with the Organizer <i>Organizer:</i> Paula McFarland 801-657-2818 pmcfarland82@msn.com Please join us on a fun backcountry ski touring and sailing adventure in the Lyngen Alps in Norway with SeilNorge. The company arranges ski and sail trips with a skipper and a ski guide per boat. The trip cost is approximately \$3,675 USD plus airfare. See event listing on website for more details.
Apr 7 Tue	Rock Climb - Indoor Evening Climbing Momentum Millcreek <i>Meet:</i> 6:30 pm at Momentum Indoor Climbing Millcreek (3173 E 3300 S, Salt Lake City, UT) <i>Organizer:</i> Paul Gettings 801-599-7311 p.gettings@gmail.com Let's keep climbing indoors during the week to stay strong for the spring. WMC members without a membership to Momentum can get a reduced priced day pass. You may be asked to prove your membership in the club. If you don't see anyone when you arrive, look through the top rope and bouldering areas for someone in a shirt with the WMC logo. All skill levels welcome.
Apr 7 Tue	Trail Running Tuesday - Olympus To Heughs Canyon Waterfall – 5.0 mi Out & Back – 1100' ascent – Fast pace <i>Meet:</i> 6:00 pm at Mount Olympus Trailhead (5425 Wasatch Blvd, Holladay, UT) <i>Organizer:</i> Tali Brenner 312-405-9930 tbrenn12@gmail.com This will be a no drop run, no runner is left behind. All levels of fitness are welcome. Mileage will be ~5 miles out and back.
Apr 8 Wed	WMC Monthly Board Meeting <i>Meet:</i> 7:00 pm at See the Agenda link below for Zoom details, or attend in person at the WMC Office (1390 S 1100 E, Salt Lake City, UT) <i>Carpool:</i> 5:40 pm at Pre meeting appetizers at Fiddlers (1059 E 2100 S, Salt Lake City, UT) <i>Organizer:</i> Dave Ashley 703-966-9741 david.ashley.vet@gmail.com Members are welcome to attend. Members wishing to bring topics to the Board's attention should email the President and Secretary no later than 7 days prior to the meeting. See the link below to access the Board Meeting Agenda. Note you must be signed into the WMC website to access the Agenda.
Apr 8 Wed	Early Morning Rock Climb: Momentum Millcreek – ntd <i>Meet:</i> 6:00 am at Momentum Indoor Climbing Millcreek (3173 E 3300 S, Salt Lake City, UT) <i>Organizer:</i> Akiko Kamimura kamimura@umich.edu I will be at Momentum Indoor Climbing Millcreek approximately from 6 am to 7:30 am. You are welcome to join me. There aren't many people there early morning. So it should be easy to find me. *I have three free day passes in addition to a buddy pass per month. Please let me know if you want to use it.
Apr 8 Wed	Trail Running - Popperton Trailhead – 6.0 mi Out & Back – 1000' ascent – Fast pace <i>Meet:</i> 6:30 pm at Popperton Trailhead <i>Organizer:</i> Kerry Regan 954-895-8627 kerryregan@gmail.com Spring is here and trail running is in season! This will be a no drop run, no runner is left behind. All levels of fitness are welcome. Bring a headlamp. It's a great run for anyone who is looking for running partners or is new to trail running. Let me know if you want to join this run or others in the future. Message me if you want to arrange carpool.
Apr 9 Thu	Rock Climb - Climb Like A Girl @ Momentum Millcreek <i>Meet:</i> 6:30 pm at Momentum Indoor Climbing Millcreek (3173 E 3300 S, Salt Lake City, UT) <i>Organizer:</i> Steph Stamm 973-945-3755 steph.m.stamm@gmail.com Join us for Climb Like a Girl, a welcoming Ladies Night with the Wasatch Mountain Club! This casual meetup is all about building community, sharing beta, and having fun climbing together. This event is inclusive and supportive of all female-identifying climbers, whether you're brand new to climbing or a seasoned crusher, this is a relaxed, supportive environment to build skills, meet partners, and share some stoke. We'll alternate Thursdays, starting in the gym (switching b/w Momentum & The Front) and then moving outside once the weather warms up. I have passes to share (text me beforehand), or WMC members get 50% off a day pass at any Momentum. Just ask at the front desk. ----- <i>Meet @ Momentum Millcreek by the cubbies on the west side of the building at 6:30.</i> If you don't see me, look for my bright yellow tank top.
Apr 10 Fri	Rock Climb - Indoor Evening Climbing Momentum Ft Union <i>Meet:</i> 6:30 pm at Momentum Indoor Climbing Fort Union (7210 Union Park Ave, Midvale, UT) <i>Organizer:</i> Paul Gettings 801-599-7311 p.gettings@gmail.com Let's keep climbing indoors during the week to stay strong for the spring. WMC members without a membership to Momentum can get a reduced priced day pass. You may be asked to prove your membership in the club. If you don't see anyone when you arrive, look through the top rope and bouldering areas for someone in a shirt with the WMC logo. All skill levels welcome.
Apr 10 Fri	Early Morning Rock Climb: Momentum Millcreek – ntd <i>Meet:</i> 6:00 am at Momentum Indoor Climbing Millcreek (3173 E 3300 S, Salt Lake City, UT) <i>Organizer:</i> Akiko Kamimura kamimura@umich.edu I will be at Momentum Indoor Climbing Millcreek approximately from 6 am to 7:30 am. You are welcome to join me. There aren't many people there early morning. So it should be easy to find me. *I have three free day passes in addition to a buddy pass per month. Please let me know if you want to use it.



<p>Apr 10 Fri – Apr 12 Sun</p> 	<p>“Do The Book” - Relaxed Pace Yellowstone Bike Ride And NTD Winter Hike – ntd – 40.0 mi Out &amp; Back – Slow pace  <i>Meet:</i> Register with the Organizer  <i>Organizer:</i> Julie Kilgore 801-244-3323 jk@wasatch-environmental.com          One of the first WMC “Do the Book - Live the Legacy” activities! Join this annual pre-season road bike trek into Yellowstone the weekend before the park is open to cars. The park service is preparing for the season so the roads will be plowed, but being flexible is key. Plan A is a SLOW MEANDERING bike ride from West Yellowstone to Terrace Springs or Gibbon Falls, intentionally taking about 4 hours for the 40-mile round trip. Plan B will be dictated by whatever Mother Nature is dishing out that morning. In Faint Heart Never Climbed Mountain, the centennial history of the WMC, Deb Frank tells the story of our second annual before-the-cars Yellowstone ride, in 2013. In “Bicycling with Bison,” Barb Gardner is unprepared for cold, wet weather and finds herself stuck behind a meandering herd of the 1,000-2,000-pound wooly beasts. It’s a suspenseful story but also highlights the making of an annual tradition and the club’s introduction to biking in winter conditions.</p>
<p>Apr 11 Sat</p>	<p>Boat Shed Opening Work Party  <i>Meet:</i> 10:00 am at Boat Shed - 4340 S 300 W (4340 Commerce Dr, Murray, UT)  <i>Organizer:</i> Bret Mathews, Donnie Benson 801-831-5940, 801-809-1854 bretmaverick999@yahoo.com, dmbenson13@gmail.com          Come help us get the boating gear ready for a new season. It’s the usual stuff - get the rafts out / inflate them / look them over / roll them up; a little cleaning; and check over the rest of the gear.</p>
<p>Apr 11 Sat</p>	<p>Snowshoe (Ski/Hike) - Location TBA – mod+ – Moderate pace  <i>Meet:</i> Register with the Organizer  <i>Organizer:</i> Akiko Kamimura kamimura@umich.edu          We plan to snowshoe in BCC/LCC, Provo, Farmington, American Fork, the West Uintas or somewhere, weather, conditions and situation permitting. The specific location will be posted when it gets closer to the date. Please bring 10 Essentials, microspikes, and snowshoes. In addition, bring poles and gaiters if there is sufficient snow for snowshoeing. Avalanche beacon, probe &amp; shovel are recommended but not required. If this changes, I will update the information. I have an extra set of avalanche beacon, probe &amp; shovel - if you want to use it, please let me know. Depending on a location, we can have skiers too. Skiers must carry avalanche beacon, probe &amp; shovel. If there is not enough snow, we will hike. Please email before Friday, 6 pm, April 10, for the meeting place and time. Registration is required. Registration priority will be given to WMC members. Registrants will receive more detailed info. Limit 8.</p>
<p>Apr 11 Sat</p>	<p>Mountaineering - Snow Climb TBD – msd  <i>Meet:</i> Register with the Organizer  <i>Organizer:</i> Kurt Hiland 503-679-5053 kurthikes@msn.com          It’s time to snow climb the Wasatch! We’ll do a variety of climbs this spring, from beginner level to more advanced. What we attempt will be determined by current snow conditions and weather, so our objective may be uncertain until a ways before. It’s possible the climb may get bumped to Sunday if our weather and/or avalanche forecasts favor doing so. Register by email if interested. WMC members only. No skis.</p>
<p>Apr 11 Sat</p>	<p>Craner Peak In The Lakeside Mountains Day Hike – mod – 5.0 mi Loop – 2065’ ascent – Moderate pace  <i>Meet:</i> 8:00 am at Utah Travel Council Lot (150 E 300 N, Salt Lake City, UT)  <i>Organizer:</i> Donn Seeley 801-706-0815 donn@xmission.com          The state of Utah has purchased the old polluting Magcorp site at the foot of the Lakeside Mountains on the west side of the Great Salt Lake. Come celebrate the end of the chlorine gas clouds with a hike to the high point of the Lakesides, Craner Peak (6625 ft). It’s an off-trail loop with a narrow canyon, some interesting old mines, a steep hill and some great views across the lake.</p>
<p>Apr 12 Sun</p>	<p>Snowshoe (Ski/Hike) - Location TBA – mod+ – Moderate pace  <i>Meet:</i> Register with the Organizer  <i>Organizer:</i> Akiko Kamimura kamimura@umich.edu          We plan to snowshoe in BCC/LCC, Provo, Farmington, American Fork, the West Uintas or somewhere, weather, conditions and situation permitting. The specific location will be posted when it gets closer to the date. Please bring 10 Essentials, microspikes, and snowshoes. In addition, bring poles and gaiters if there is sufficient snow for snowshoeing. Avalanche beacon, probe &amp; shovel are recommended but not required. If this changes, I will update the information. I have an extra set of avalanche beacon, probe &amp; shovel - if you want to use it, please let me know. Depending on a location, we can have skiers too. Skiers must carry avalanche beacon, probe &amp; shovel. If there is not enough snow, we will hike. Please email before Friday, 6 pm, April 10, for the meeting place and time. Registration is required. Registration priority will be given to WMC members. Registrants will receive more detailed info. Limit 8.</p>
<p>Apr 13 Mon</p>	<p>Early Morning Rock Climb: Momentum Millcreek – ntd  <i>Meet:</i> 6:00 am at Momentum Indoor Climbing Millcreek (3173 E 3300 S, Salt Lake City, UT)  <i>Organizer:</i> Akiko Kamimura kamimura@umich.edu          I will be at Momentum Indoor Climbing Millcreek approximately from 6 am to 7:30 am. You are welcome to join me. There aren’t many people there early morning. So it should be easy to find me. *I have three free day passes in addition to a buddy pass per month. Please let me know if you want to use it.</p>
<p>Apr 13 Mon</p>	<p>Evening Workout Hike - Lower Ridge Of Bells – mod- – Out &amp; Back – Moderate pace  <i>Meet:</i> 5:45 pm at Bell Canyon Granite Trailhead (3450 Little Cottonwood Rd, Sandy, UT)  <i>Organizer:</i> Julie Kilgore 801-244-3323 jk@wasatch-environmental.com          The ridge between Little Cottonwood Canyon and Bells is steep with some tricky footing in places. With the city lights in view, this should make a nice sunset and city-light night hike. Plan on a 5:45 p.m. departure and an 8:00 return. Meet in the upper parking lot that is accessed from Wasatch Boulevard.</p>
<p>Apr 14 Tue</p>	<p>Rock Climb - Indoor Evening Climbing Momentum Millcreek  <i>Meet:</i> 6:30 pm at Momentum Indoor Climbing Millcreek (3173 E 3300 S, Salt Lake City, UT)  <i>Organizer:</i> Paul Gettings 801-599-7311 p.gettings@gmail.com          Let’s keep climbing indoors during the week to stay strong for the spring. WMC members without a membership to Momentum can get a reduced priced day pass. You may be asked to prove your membership in the club. If you don’t see anyone when you arrive, look through the top rope and bouldering areas for someone in a shirt with the WMC logo. All skill levels welcome.</p>
<p>Apr 14 Tue</p>	<p>Hiking Meeting/Social: Pack To The Future - Backpacking Basics  <i>Meet:</i> Register with the Organizer  <i>Organizer:</i> Tali Brenner, Frank Bouchard tbrenn12@gmail.com, fabouchard@gmail.com          Pack to the Future: Backpacking Basics Want to get into backpacking but not sure where to start? This meetup is designed specifically for first-time backpackers who want to learn the essentials before hitting the trail. We’ll cover the fundamental gear, planning tips, and backcountry skills you need to successfully complete your first overnight backpacking trip. No need to buy anything new beforehand - bring what you already have, and we’ll help you figure out what works and what doesn’t. Not a beginner? You’re absolutely welcome! Join us to refresh your skills, learn new techniques, or share your experience with those just getting started. Potluck style dinner. Please register with the organizers for this event.</p>
<p>Apr 15 Wed</p>	<p>Early Morning Rock Climb: Momentum Millcreek – ntd  <i>Meet:</i> 6:00 am at Momentum Indoor Climbing Millcreek (3173 E 3300 S, Salt Lake City, UT)  <i>Organizer:</i> Akiko Kamimura kamimura@umich.edu          I will be at Momentum Indoor Climbing Millcreek approximately from 6 am to 7:30 am. You are welcome to join me. There aren’t many people there early morning. So it should be easy to find me. *I have three free day passes in addition to a buddy pass per month. Please let me know if you want to use it.</p>



Apr 15 Wed	Trail Running - Popperton Trailhead – 6.0 mi Out & Back – 1000’ ascent – Fast pace <i>Meet:</i> 6:30 pm at Popperton Trailhead <i>Organizer:</i> Kerry Regan 954-895-8627 kerryregan@gmail.com Spring is here and trail running is in season! This will be a no drop run, no runner is left behind. All levels of fitness are welcome. Bring a headlamp. It’s a great run for anyone who is looking for running partners or is new to trail running. Let me know if you want to join this run or others in the future. Message me if you want to arrange carpool.
Apr 17 Fri	Rock Climb - Indoor Evening Climbing Momentum Ft Union <i>Meet:</i> 6:30 pm at Momentum Indoor Climbing Fort Union (7210 Union Park Ave, Midvale, UT) <i>Organizer:</i> Paul Gettings 801-599-7311 p.gettings@gmail.com Let’s keep climbing indoors during the week to stay strong for the spring. WMC members without a membership to Momentum can get a reduced priced day pass. You may be asked to prove your membership in the club. If you don’t see anyone when you arrive, look through the top rope and bouldering areas for someone in a shirt with the WMC logo. All skill levels welcome.
Apr 17 Fri	Climbing Season Kickoff And Planning Party - Climbing Meeting/Social <i>Meet:</i> 6:30 pm at Steph & Nathan’s house. Email for registration and address. <i>Organizer:</i> Steph Stamm, Nathan Chaffee 973-945-3755 steph.m.stamm@gmail.com, nac787.home@gmail.com With warmer days on the horizon, it’s time to start dreaming up - and planning - another great rock and alpine climbing season. Join us for this year’s <b>Climbing Season Kickoff and Planning Party!</b> Enjoy good company and stoke for the season ahead with food provided by the club. This is a casual, collaborative get-together where we’ll: - Brainstorm climbing trips and objectives for the season - Share ideas for skills clinics, mentorship, and community events - Connect with other climbers and potential organizers - Optionally bring a laptop for researching and posting events Whether you’re a seasoned organizer, a newer member with ideas, or just curious about getting more involved, we’d love to have you there. No commitment required - just bring your enthusiasm and any ideas you want to see take shape this year.
Apr 17 Fri	Early Morning Rock Climb: Momentum Millcreek – ntd <i>Meet:</i> 6:00 am at Momentum Indoor Climbing Millcreek (3173 E 3300 S, Salt Lake City, UT) <i>Organizer:</i> Akiko Kamimura kamimura@umich.edu I will be at Momentum Indoor Climbing Millcreek approximately from 6 am to 7:30 am. You are welcome to join me. There aren’t many people there early morning. So it should be easy to find me. *I have three free day passes in addition to a buddy pass per month. Please let me know if you want to use it.
Apr 18 Sat	Snowshoe (Ski/Hike) - Location TBA – mod+ – Moderate pace <i>Meet:</i> Register with the Organizer <i>Organizer:</i> Akiko Kamimura kamimura@umich.edu We plan to snowshoe in BCC/LCC, Provo, Farmington, American Fork, the West Uintas or somewhere, weather, conditions and situation permitting. The specific location will be posted when it gets closer to the date. Please bring 10 Essentials, microspikes, and snowshoes. In addition, bring poles and gaiters if there is sufficient snow for snowshoeing. Avalanche beacon, probe & shovel are recommended but not required. If this changes, I will update the information. I have an extra set of avalanche beacon, probe & shovel - if you want to use it, please let me know. Depending on a location, we can have skiers too. Skiers must carry avalanche beacon, probe & shovel . If there is not enough snow, we will hike. Please email before Friday, 6 pm, April 17, for the meeting place and time. Registration is required. Registration priority will be given to WMC members. Registrants will receive more detailed info. Limit 8.
Apr 18 Sat	Lets Go Paddling Locally!!! :) Paddle Jordan River – class I <i>Meet:</i> 3:00 pm at Willow Park, Lehi by the boat launch <i>Organizer:</i> Mara Green 385-695-0218 raftingmara@gmail.com Lets go paddling locally!!! :) Where: Jordan River - Inlet Park to Willow Park When: Saturday May 9, 2026. 3PM - meet at Willow Park, Lehi Estimated Float time: +/- 2-3 hours Caution: This river section can be miserable if it is too windy, so this trip may be cancelled or we may move it to Salt Lake County to a less wind prone section of river. Skill level: Easy flat water Details: Bring your own kayak, paddle board, canoe, etc. State law requires life jackets - If you bring water or snacks make sure it can be strapped to your water craft so it doesn’t become litter. We will meet at Willow Park by the boat launch and carpool up to the boat launch near Utah Lake at Inlet Park, Saratoga Springs. If you need equipment, you can most likely rent it from the Wasatch Mountain Club. Contact Donnie or Bret who coordinate boating equipment. I’m excited to see you all and get out on the water this season. Let me know if you have questions. Let’s go paddling! =)
Apr 18 Sat	Mountaineering - Snow Climb TBD – msd <i>Meet:</i> Register with the Organizer <i>Organizer:</i> Kurt Hiland 503-679-5053 kurthikes@msn.com It’s time to snow climb the Wasatch! We’ll do a variety of climbs this spring, from beginner level to more advanced. What we attempt will be determined by current snow conditions and weather, so our objective may be uncertain until a ways before. It’s possible the climb may get bumped to Sunday if our weather and/or avalanche forecasts favor doing so. Register by email if interested. WMC members only. No skis.
Apr 18 Sat – Apr 19 Sun	North Deep Creek Mountains Car Camp – mod+ – 8.0 mi – 3000’ ascent – Moderate pace <i>Meet:</i> Register with the Organizer <i>Organizer:</i> Donn Seeley 801-706-0815 donn@xmission.com The Deep Creek Mountains are a little-known range on the Utah-Nevada border south of Wendover. They are the 4th highest range in Utah, with two peaks over 12,000 ft; the Wasatch are the 5th highest range. The northern, lower part of the range has some spectacular quartzite cliffs and rugged canyons; we’ll check out Chokecherry Canyon, Hardscrabble Canyon, Reilly Canyon and possibly Big Canyon, if the water level of Basin Creek is low. This trip is exploratory and off-trail, with some steep slopes and potential bushwhacking.
Apr 19 Sun	Snowshoe (Ski/Hike) - Location TBA – mod+ – Moderate pace <i>Meet:</i> Register with the Organizer <i>Organizer:</i> Akiko Kamimura kamimura@umich.edu We plan to snowshoe in BCC/LCC, Provo, Farmington, American Fork, the West Uintas or somewhere, weather, conditions and situation permitting. The specific location will be posted when it gets closer to the date. Please bring 10 Essentials, microspikes, and snowshoes. In addition, bring poles and gaiters if there is sufficient snow for snowshoeing. Avalanche beacon, probe & shovel are recommended but not required. If this changes, I will update the information. I have an extra set of avalanche beacon, probe & shovel - if you want to use it, please let me know. Depending on a location, we can have skiers too. Skiers must carry avalanche beacon, probe & shovel . If there is not enough snow, we will hike. Please email before Friday, 6 pm, April 17, for the meeting place and time. Registration is required. Registration priority will be given to WMC members. Registrants will receive more detailed info. Limit 8.



Apr 20 Mon – Apr 26 Sun	<p>Mountaineering - Shasta, Whitney, Russell – ext  <i>Meet:</i> Register with the Organizer  <i>Organizer:</i> Alonso Gonzalez 801-300-7911 alonsogosuna@gmail.com  Join me for a spring mountaineering road trip to three of California's 14ers: Mount Shasta, Mount Whitney, and Mount Russell. Shasta is tentatively planned via Avalanche Gulch, with an overnight high camp unless no one opts to camp, in which case it may be a single-day push. On Whitney, we will take the Mountaineers Route, head to the summit with lighter packs, and spend the night at USB. Russell, the following day, will most likely be via the East Ridge (route subject to conditions). Participants are welcome to join for one, two, or all three peaks, depending on experience and availability. This is a snow mountaineering trip, and participants must have prior experience with steep snow travel, crampons, and ice axe use. Strong fitness and comfort with long alpine days at altitude are required, and winter camping experience is recommended for anyone joining the overnight portions. Email me your experience and which peaks you're interested in, and I'll share the detailed plan. I will also send route and conditions updates as the date approaches.</p>
Apr 20 Mon	<p>Early Morning Rock Climb: Momentum Millcreek – ntd  <i>Meet:</i> 6:00 am at Momentum Indoor Climbing Millcreek (3173 E 3300 S, Salt Lake City, UT)  <i>Organizer:</i> Akiko Kamimura kamimura@umich.edu  I will be at Momentum Indoor Climbing Millcreek approximately from 6 am to 7:30 am. You are welcome to join me. There aren't many people there early morning. So it should be easy to find me. *I have three free day passes in addition to a buddy pass per month. Please let me know if you want to use it.</p>
Apr 20 Mon	<p>Dog Friendly Evening Hike - Pencil Point And Beyond – mod- – Out &amp; Back – Moderate pace  <i>Meet:</i> 5:45 pm at Meet at the trailhead located at approximately 2985 Benchmark Drive  <i>Organizer:</i> Julie Kilgore 801-244-3323 jk@wasatch-environmental.com  We'll access our route between the massive new houses to catch the ridge south of Jack's Mountain. The route will take us up and over Pencil Point and beyond for a brisk and steep 2-hour outing.</p>
Apr 21 Tue	<p>Early Morning Rock Climb: Momentum Millcreek – ntd  <i>Meet:</i> 6:00 am at Momentum Indoor Climbing Millcreek (3173 E 3300 S, Salt Lake City, UT)  <i>Organizer:</i> Akiko Kamimura kamimura@umich.edu  I will be at Momentum Indoor Climbing Millcreek approximately from 6 am to 7:30 am. You are welcome to join me. There aren't many people there early morning. So it should be easy to find me. *I have three free day passes in addition to a buddy pass per month. Please let me know if you want to use it.</p>
Apr 22 Wed – Apr 27 Mon	<p>White Water Rafting Lower San Juan River – class III – 54.0 mi  <i>Meet:</i> Register with the Organizer  <i>Organizer:</i> Luke Johnson 801-755-7575 huckleberry78360@gmail.com  Join us on the beautiful San Juan River. We will drive down April 22 and put on the 23rd. Take off the 27th and drive home. This will be the lower portion from Mexican Hat to Clay Hills. This section has several Class II and one Class III rapids. Being an April trip the can weather vary by the hour. Could be rainy and cold, could be sunny and warm. I don't know, but that's half of the fun! Expect it all and plan accordingly. Meals will be shared and we will carpool as efficiently as possible to keep shuttle costs low. Let me know as soon as possible, as we are hoping to have a solid head count ASAP.</p>
Apr 22 Wed	<p>Trail Running - Popperton Trailhead – 6.0 mi Out &amp; Back – 1000' ascent – Fast pace  <i>Meet:</i> 6:30 pm at Popperton Trailhead  <i>Organizer:</i> Kerry Regan 954-895-8627 kerryregan@gmail.com  Spring is here and trail running is in season! This will be a no drop run, no runner is left behind. All levels of fitness are welcome. Bring a headlamp. It's a great run for anyone who is looking for running partners or is new to trail running. Let me know if you want to join this run or others in the future. Message me if you want to arrange carpool.</p>
Apr 24 Fri	<p>Early Morning Rock Climb: Momentum Millcreek – ntd  <i>Meet:</i> 6:00 am at Momentum Indoor Climbing Millcreek (3173 E 3300 S, Salt Lake City, UT)  <i>Organizer:</i> Akiko Kamimura kamimura@umich.edu  I will be at Momentum Indoor Climbing Millcreek approximately from 6 am to 7:30 am. You are welcome to join me. There aren't many people there early morning. So it should be easy to find me. *I have three free day passes in addition to a buddy pass per month. Please let me know if you want to use it.</p>
Apr 24 Fri – Apr 26 Sun	<p>Mountain Bike/Road Bike/Flat Water Paddle/Camping St. George, UT – mod- – 10.0 mi Out &amp; Back – 500' ascent – Moderate pace  <i>Meet:</i> Register with the Organizer  <i>Organizer:</i> Marcia Andriano-Pilz, Joergen Pilz 801-864-6642, 801-232-3315 partner2@comcast.net, joergen1@comcast.net  Mountain/Road Bike/Flat Water Paddle, Quailcreek State Park, St. George, Ut. Join my husband and I for a three day weekend paddling, biking, camping at this beautiful Southern Utah reservoir. You can rent kayaks, paddle boards, etc at the state park. There are mountain bike trails from the park. Also, there are mountain bike trails at Red Cliffs National Conservation Area. There are plenty of paved bike trails all over St. George especially along the Virgin River. Depending on what your main focus is, you can get your campground reservations at Quailcreek, Red Cliffs Campground or Snow Canyon State Park. I would recommend mountain bikers stay at Red Cliffs, Roadies stay at Snow Canyon and paddlers stay at Quailcreek or at a local hotel. You need to make your own reservations ASAP. Campgrounds book up early especially on weekends. You can book Redcliffs Campground on Recreation.gov. Goggle the particular state park you're interested in and make reservations directly on their webpage. I have booked the Day Use Pavilion for a potluck dinner Saturday, April 25 at Quailcreek. Contact me directly. I can take phone calls during the day. I am looking for someone willing to lead road bike rides on the various bike paths in St. George. I would plan on riding in the mornings and then paddling in the afternoons. The mountain bike trails are better in Red Cliffs than Quailcreek. There are numerous mountain bike opportunities all over the St. George area. My contact info is below.</p>
Apr 24 Fri – Apr 26 Sun	<p>Mountain Bike/Road Bike/Flat Water Paddling/Camping St. George, UT – class I  <i>Meet:</i> Register with the Organizer  <i>Organizer:</i> Marcia Andriano-Pilz, Joergen Pilz 801-864-6642, 801-232-3315 partner2@comcast.net, joergen1@comcast.net  Join my husband and I for a three day weekend paddling, biking, camping at this beautiful Southern Utah reservoir. You can rent kayaks, paddle boards, etc at the state park. There are mountain bike trails from the park. Also, there are mountain bike trails at Red Cliffs National Conservation Area. There are plenty of paved bike trails all over St. George especially along the Virgin River. Depending on what your main focus is, you can get your campground reservations at Quailcreek, Red Cliffs Campground or Snow Canyon State Park. I would recommend mountain bikers stay at Red Cliffs, Roadies stay at Snow Canyon and paddlers stay at Quailcreek or at a local hotel. You need to make your own reservations ASAP. Campgrounds book up early especially on weekends. You can book Redcliffs Campground on Recreation.gov. Goggle the particular state park you're interested in and make reservations directly on their webpage. I have booked the Day Use Pavilion for a potluck dinner Saturday, April 25 at Quailcreek. Contact me directly. I can take phone calls during the day. I am looking for someone willing to lead road bike rides on the various bike paths in St. George. I would plan on riding in the mornings and then paddling in the afternoons. The mountain bike trails are better in Red Cliffs than Quailcreek. There are numerous mountain bike opportunities all over the St. George area. My contact info is below.</p>



Apr 24 Fri	Northern Wasatch Ski And Social Club: Indoor Social Meeting <i>Meet:</i> 5:45 pm at Natural Grocer 270 12th St, Ogden, UT 84404 <i>Organizer:</i> Jack Cook 907-440-1251 jcook096@gmail.com The <b>Northern Wasatch Ski and Social Club</b> was founded in 2019 in Mountain Green, Utah and is a group of like-minded active folks who love to be outside playing in the mountains. The club has about 80 to 150 members and meets weekly to ski at Snowbasin resort. If you would like to get to know this group, join the Northern Wasatch Ski and Social Club for their end of the year ice cream social. We will have hors d'oeuvres, a cooking demo, and a quick discussion of topics related to skiing (in particular getting to and skiing at Snowbasin resort). We will then break, have ice cream, and have a social where we reflect on how weird and warm this ski season has been. The social venue at <b>Natural Grocers</b> in Ogden can hold up to 50ish people. Please <b>RSVP via EMAIL</b> to reserve a space. This is a free event open to all.
Apr 25 Sat	Snowshoe (Ski/Hike) - Location TBA – mod+ – Moderate pace <i>Meet:</i> Register with the Organizer <i>Organizer:</i> Akiko Kamimura kamimura@umich.edu We plan to snowshoe in BCC/LCC, Provo, Farmington, American Fork, the West Uintas or somewhere, weather, conditions and situation permitting. The specific location will be posted when it gets closer to the date. Please bring 10 Essentials, microspikes, and snowshoes. In addition, bring poles and gaiters if there is sufficient snow for snowshoeing. Avalanche beacon, probe & shovel are recommended but not required. If this changes, I will update the information. I have an extra set of avalanche beacon, probe & shovel - if you want to use it, please let me know. Depending on a location, we can have skiers too. Skiers must carry avalanche beacon, probe & shovel . If there is not enough snow, we will hike. Please email before Friday, 6 pm, April 24, for the meeting place and time. Registration is required. Registration priority will be given to WMC members. Registrants will receive more detailed info. Limit 8.
Apr 25 Sat	Mountaineering - Snow Climb TBD – msd <i>Meet:</i> Register with the Organizer <i>Organizer:</i> Kurt Hiland 503-679-5053 kurthikes@msn.com It's time to snow climb the Wasatch! We'll do a variety of climbs this spring, from beginner level to more advanced. What we attempt will be determined by current snow conditions and weather, so our objective may be uncertain until a ways before. It's possible the climb may get bumped to Sunday if our weather and/or avalanche forecasts favor doing so. Register by email if interested. WMC members only. No skis.
Apr 25 Sat	Cedar Mountains High Point Loop Day Hike – mod+ – 9.0 mi Shuttle – 2800' ascent – Moderate pace <i>Meet:</i> 7:00 am at Utah Travel Council Lot (150 E 300 N, Salt Lake City, UT) <i>Organizer:</i> Donn Seeley 801-706-0815 donn@xmission.com The Cedars are the rugged range on the east side of the salt flats south of I-80. This long shuttle hike starts in a crazy gorge, climbs steeply to a cliffy ridge, traverses across the 7712 ft high point of the range (don't believe Wikipedia), then descends through some more crazy terrain. There are great views of the dune fields in Dugway and the vastness of the salt flats. If we're lucky, we might see wild horses. This hike is steep and off-trail, and involves a bit of scrambling.
Apr 26 Sun	Mountaineering Workshop – mod+ <i>Meet:</i> Register with the Organizer <i>Organizer:</i> Akiko Kamimura kamimura@umich.edu This workshop will provide some very focused skill development for Mt Rainier or other mountains in the North Cascades, or other big mountains (e.g. high altitude mountains in Bolivia, Denali), depending on participants' interests. We will have an instructor from the U of U's Department of Recreation and Tourism. Topics to be covered are included, but not limited to, glacier travel, team rope travel, crevasse rescue, running belay on snow, snow travel skills on steep slopes (45-65 degrees), and preparation for climbing glaciated peaks. Approximately 8:00 am-2pm. Location TBA. Participants are expected to have basic knowledge and skills of mountaineering (e.g. how to use crampons and ice axe). This is also a great refresher class for those who have mountaineering experience. Instruction donation - \$20/person. Limit 15 participants. Registration is required. Priority will be given to WMC members. Max 15. Registrants will receive more detailed info including the list of required and optional gear.
Apr 26 Sun	Winter Mountaineering, Toledo Chutte, Traverse To Flagstaff And Davenport Hill – mod – 6.0 mi – 2400' ascent <i>Meet:</i> Register with the Organizer <i>Organizer:</i> Jose Pacheco 314-910-8731 jpachecowashu30@gmail.com We will be ascending a steep snow slope about 30-46 degrees to toledo peak summit, then traverse to flagstaff and davenport Hill. Avalanche rescue gear (beacon, shovel, probe) must be carried on this trip due to travel on avalanche terrain/run out zones (30 degrees or more or within run out zones). This applies to terrain that is rated as Green (Low risk) on the avalanche forecast for relevant elevations and aspects. If the avalanche forecast is Orange (Considerable risk) for relevant elevations and aspects, that terrain will be closed to WMC activities for all avalanche problems and the trip will be cancelled. If the avalanche forecast is Yellow (Moderate) for relevant elevations and aspects for Persistent Weak Layer (PWL), that terrain will be closed to WMC activities and the trip will be cancelled. Other required equipment will include helmet, crampons, ice ax leash, harness, snowshoes, microspikes, and 10 essentials. Current Roster - Jose Pacheco, Savannah Sommer, Daniel Hadley, Stephanie McGarvey, Thomas Fu Check avalanche forecast prior to trip: <a href="#">UAC-SLC</a> . Toledo Chutte:
May 5 Tue – May 23 Sat	Rock Climb And Mountaineering In The Cordillera Blanca, Peru – 20.0 mi – 9000' ascent <i>Meet:</i> 12:00 pm at Huaraz, Peru <i>Organizer:</i> Frank Nederhand 678-488-3228 franka.nederhand@gmail.com A philanthropic project to develop climbing areas for the beautiful people and youth of the Callejon de Huaylas (Valley of the Huaylas) of Peru. See event listing on website for more details.
May 8 Fri – May 11 Mon	Escalante State Park Car Camp – ntd+ <i>Meet:</i> Register with the Organizer <i>Organizer:</i> Martha Veranth, John Veranth 801-278-5826 veranth@xmission.com, veranth@xmission.com Repeat of previous year's format: Car camp at group site, day hikes from Hole in the Rock road or other nearby trailheads, pot luck dinners. Register to get the logistics emails.



May 8 Fri – 10 Sun	<p>Canyoneering- Begginer's Canyon On East Zion  <b>Meet:</b> Register with the Organizer  <b>Organizer:</b> Dea Nelson 832-679-2146 formidable.ser@gmail.com  We have a date. Please join us on this amazing camping and Canyoneering 3 day trip. You can arrive late on Friday and join us for the adventure on Canyons: Diane's Throne Birch Hollow You have to have your Entry Level Assesment passed, checked and blessed by the leader. Diane's throne <a href="https://www.roadtripryan.com/go/t/utah/zion/dianas-throne-canyon">https://www.roadtripryan.com/go/t/utah/zion/dianas-throne-canyon</a> Birch Hollow -<a href="https://www.roadtripryan.com/go/t/utah/zion/birch-hollow">https://www.roadtripryan.com/go/t/utah/zion/birch-hollow</a> Please read the beta of those 2 canyons so you can be sure you are able to complete the long hike out of Birch Hollow. Yes, we are going to take the hiking route. This will be a 3 day weekend so consider your time for this event. We can run 1 canyon on Friday if you can get off work early enough. Required Gear List: Registration &amp; Attendance: To attend this free event, you must have an active WMC membership. Space is limited to ___ participants (including the host), and we cannot accommodate "+1" guests-everyone must RSVP individually. If your plans change, please cancel your RSVP at least 24 hours before the event to allow someone from the waitlist to join. Please be aware that "no-shows" or late cancellations may result in being blacklisted from future events. Agenda: Terminology: Personalized Setup: Execution: . Liability Disclaimer (Required): By signing up for and/or attending this event, you acknowledge and agree that: You release and forever discharge the organizers jointly and severally from any actions, causes of action, claims, damage, or loss - including death or injury - which may be sustained from participating in this Meetup event. All attendees are participating in this event at their own risk and are solely responsible for any damage to their property and/or any injury or loss, in whatever form, to themselves or their guests. By signing up for and/or attending this Meetup event, you affirm that you understand this disclaimer and release, and that you knowingly and voluntarily agree not to bring any type of claim, including a lawsuit or other action, arising out of or related to this Meetup event against the organizers of this Meetup group. Meetup Priority is NOT recognized by this group. Email Dea Nelson at formidable.ser@gmail.com if you have any questions.</p>
May 20 Wed – Jun 3 Wed	<p>Mountaineering - Chearoco &amp; Chachacomani, Bolivia – ext  <b>Meet:</b> Register with the Organizer  <b>Organizer:</b> Akiko Kamimura kamimura@umich.edu  We plan to climb two 6,000m peaks in Bolivia - Chearoco (6,176m/ 2,0263 ft) and Chachacomani (6,090m/ 19,980ft). In addition, we plan to climb two 5000m peaks - Condoriri (5,648m/18,530ft) and Paco Q'iuta (5,570m/ 18,274ft). See event listing on website for more details.</p>
May 22 Fri – 24 Sun	<p>White Water Rafting Beginners Trip – class III  <b>Meet:</b> Register with the Organizer  <b>Organizer:</b> Luke Johnson 801-755-7575 huckleberry78360@gmail.com  Beginner Whitewater Training Trip-- Moab Daily - May 22, 2025 Besides being a fun river trip this trip introduces you to WMC Boating trips. On a commercial boating trip the Guides do everything for you (inflate the boats, make the meals, guide you down the river, ...) but on Club trips there are no paid guides. Hence everybody on the trip contributes to completing the tasks that need to be done. Club members will share with you what they know about running rivers. This should include how to "read the river", throw a throw bag, right a flipped raft, paddle a paddle boat/paddle a duckie (inflatable kayak)/row an oar rig, what it's like to swim a rapid, and other safety skills. Non-river skills you will learn about are what personal gear works well on river trips, how to make group meals using the WMC Boating's kitchen, what gear the club owns (and is available for cheap private rentals when it's not being used on a club trip). Experienced boaters--we need you to help make this a successful learning experience!</p>
May 30 Sat	<p>Social -New Members Spring Social And Multi-Sport Event  <b>Meet:</b> 10:00 am at Hidden Valley Park <a href="https://www.google.com/maps/place/2860+Wasatch+Blvd%2C+Sandy%2C+UT/">https://www.google.com/maps/place/2860+Wasatch+Blvd%2C+Sandy%2C+UT/</a>  <b>Organizer:</b> Giulia Roselli 801-604-6635 socialdirector@wasatchmountainclub.org  Are you new, newish, or renewed to the WMC and want more information about how to engage? Join some current and former WMC board members, coordinators, and activity organizers to sample a WMC activity, followed by a picnic at Noon, sharing of club information and resources, and answer questions. Bring a dish to share. We'll have small bites and finger food on hand. PLEASE RSVP SO WE CAN PLAN FOOD ACCORDING. WE STRONGLY SUGGEST TO BRING A DISH TO SHARE. THANK YOU</p>
Jun 5 Fri – Jun 7 Sun	<p>Packrafting The Little Grand Canyon (San Rafael River) – class I – 17.0 mi  <b>Meet:</b> Register with the Organizer  <b>Organizer:</b> Katherine Thom 702-602-7802 utensil_uplift_0w@icloud.com  This is a placeholder for what will hopefully be some nice spring runoff class 1 floating. We will head down Friday and grab a campsite on Buckhorn Draw Road. Early on Saturday we will get some vehicles down to the takeout at the bridge down Buckhorn Rd. and then shuttle back up to the put in at Fuller Bottom (roughly 20 miles total on good dirt roads). We will then get underway and find a nice space to camp on the river as far away as we can get from the bulk of the bugs. Your camp supplies should thus be portable up to a few hundred yards. On Sunday we will finish our float, pick up the car at the put in, and head home. By making this a two day, we can deal with some slow river miles and hopefully throw in some hiking. The trip will be cancelled if the CFS near Green River (I-70) is forecasted to be below 150 or over 500. The weather forecast will also be part of decision-making to avoid the possibility of flash flood risk. In previous years there have been occasional river hazards like logs which may or may not be something which can be walked around...TBD. Exploratory. Group size limited to 10 and participants should plan to bring a packraft or duckie. Boat safety/repair gear and some experience required.</p>
Jun 9 Tue – Jun 14 Sun	<p>White Water Rafting - Yampa River - Full – class III – 71.0 mi  <b>Meet:</b> Register with the Organizer  <b>Organizer:</b> Aymara Jimenez-Lofgren 435-764-4496 saymaraj@gmail.com  ***Trip is FULL but have a wait list going*** The Yampa river is located in northwest Colorado in Dinosaur National Monument. This 71 mile river trip begins at Deerlodge Park and ends at Split Mountain. We will depart Salt Lake City on June 9th and float on the river from June 10th through the 14th, returning to Salt Lake on the 14th. Much of the Yampa is easy going, serenely winding its way through massive canyon walls. It also has some rapids with names like Teepee Falls, Five Springs Draw, Big Joe, and Warm Springs.</p>
Jun 19 Fri – Jun 21 Sun	<p>White Water Rafting Moab Daily  <b>Meet:</b> Register with the Organizer  <b>Organizer:</b> Holly Moursal 385-645-5304 holly.josephson@gmail.com  Tbd</p>
Jun 19 Fri – Jun 21 Sun	<p>Car Camp And Hike Deep Creek Mountains – mod  <b>Meet:</b> Register with the Organizer  <b>Organizer:</b> Frank Bouchard 352-246-5304 fabouchard@gmail.com  The Deep Creek mountains are one of Utah's most remote ranges. We'll be dispersed car camping Friday and Saturday nights. On Saturday we will summit the highest peak, Ibapah. That night we'll have a campfire and dinner party. Everyone brings their own food, but sharing is encouraged. And on Sunday we will do another hike. The hiking will likely be off-trail, involve scrambling on rocks, and very scenic. There are no amenities anywhere around. You will have to bring all of your own food, water, and anything else you need for the weekend. If this sounds like a good time to you and you want to join, let me know. Copy and paste my email into your own email service rather than using the website link as this link sometimes doesn't work.</p>
Jul 11 Sat – Jul 12 Sun	<p>Hike Kings Peak And South Kings Peak – 27.0 mi – 5010' ascent – Moderate pace  <b>Meet:</b> Register with the Organizer  <b>Organizer:</b> Jose Pacheco 314-910-8731 jpachecowashu30@gmail.com  We will start at Henry's Fork Trailhead and do this as a long day hike or an overnight backpack depending on forecast and ability of participants. If done as backpack, tent and backpacking gear will be required in addition to 10 essentials (if do as overnight would set up camp near dollar lake and all required gear would be emailed to participants 1-2 weeks prior). Current participants Jose Pacheco Heather Benally Dea Avila Nelson</p>



Jul 17 Fri – Jul 19 Sun	Teton Mountaineering - Grand/Middle & Garnet Canyon <i>Meet:</i> Register with the Organizer <i>Organizer:</i> Nathan C 307-371-6356 nac787.home@gmail.com <b>**Permit capacity has been reached - please reach out for waitlist**</b> This is an <b>alpine climbing</b> trip to Grand Teton National Park and climbs accessed via Garnet Canyon. This is the standard approach for the Grand Teton and is also the point of access for Middle / South Teton, Irene's Arete, etc... This is a non-guided, exploratory activity that provides an area to "base camp" for the climb(s) of your choosing. Permits are secured for overnight backcountry camping at the Moraines and Meadows areas for Friday and Saturday night, which affords flexibility for varied objectives. Site assignment will be first-come first-serve. Interested participants will be asked to organize in small alpine teams of 2-3 and choose objectives in line with their team's experience and skillset. Specific route conditions and local weather are highly variable at this time of year - snow and ice are probable on several routes and should be factored into participant's planning. Organizer will drive up on Thursday and stay at the AAC Climber's Ranch for permit pickup and a relaxed start on Friday AM - highly recommended that others do the same. Please email the organizer to discuss experience and desired objectives as part of registration. Folks not wishing to camp (i.e. car-to-car) objectives in the area are welcome to coordinate with the organizer, but will not be considered trip participants.
Jul 21 Tue – Jul 23 Thu	Hike & Car Camp/ Hotel - Mt. Blue Sky (1,4267 Ft) Via West Ridge, Colorado – msd – Moderate pace <i>Meet:</i> Register with the Organizer <i>Organizer:</i> Akiko Kamimura kamimura@umich.edu We plan to hike to Mt Blue Sky (1,4267 ft) via West Ridge from Gunella Pass - class 2, 9.25 miles RT with 3,100 ft gain. Due to a risk of rock falls, helmets are required. I have two extra helmets in case you want to borrow. The planned schedule is: July 21 Tue Road trip; July 22 Wed hike; July 23 Thu rest day for those who will continue the adventure, road trip for those who will go home. Due to a high possibility of afternoon thunderstorms in CO, we will start a hike very early. The hikes will be exploratory. We will stay at a developed campsite. If you prefer to stay at a hotel, Georgetown is the closest town. Those who will stay at a campsite, there will be small cost sharing. Individual shares will depend on how many people will camp. The main group will stay there from July 21 Tue to July 25 Sat (including road trip, hiking to Blue Sky, Grays & Torreys. Partial participation is fine. To register, please email the organizer. If you have never hiked with the organizer, please include your hiking and camping experience. Limit 8. WMC members only. For more details, please contact the organizer.
Jul 23 Thu – Jul 25 Sat	Hike & Car Camp/ Hotel - Grays (14,276 Ft) & Torreys (14,272 Ft), Colorado – msd – Moderate pace <i>Meet:</i> Register with the Organizer <i>Organizer:</i> Akiko Kamimura kamimura@umich.edu We plan to hike to Grays & Torreys - class 1, 8.25 miles RT with 3,600 ft gain. The planned schedule is: July 23 Thu rest day for those who will continue the adventure from Blue Sky, road trip for those who will come on the day; July 24 Fri hike; and July 25 Sat road trip to go home. Due to a high possibility of afternoon thunderstorms in CO, we will start a hike very early. The hikes will be exploratory. We will stay at a dispersed campsite (no fee). If you prefer to stay at a hotel, Georgetown is the closest town. The main group will stay there from July 21 Tue to July 25 Sat (including road trip, hiking to Blue Sky, Grays & Torreys. Partial participation is fine. To register, please email the organizer. If you have never hiked with the organizer, please include your hiking and camping experience. Limit 8. WMC members only. For more details, please contact the organizer.
Jul 25 Sat	Annual Oldtimers Social And Potluck At The Historic WMC Lodge <i>Meet:</i> 2:00 pm at Wasatch Mountain Lodge (8465 S Mary Lake Lane, Brighton, UT) <i>Organizer:</i> Giulia Roselli 801-604-6635 socialdirector@wasatchmountainclub.org Come one, come all...although we are celebrating us 'oldies' and Life Members of the WMC, everyone is welcome to attend our afternoon Social get-together at the historic WMC lodge at Brighton. Come early for a leisurely hike up to the Lady Lakes (Mary, Martha and Catherine) at a relaxed pace if you like. The Social gathering and Pot Luck will run from 2 to 5 PM. WMC will provide burgers and fixins. Bring a picnic dish to share, and your favorite beverages. No RSVP needed, just show up at the lodge at 11AM if you want to hike, or at 2PM for just the social gathering and shared dining. WE SUGGEST TO BRING A DISH TO SHARE. If you're new to the club, come and meet the legendary Life Members, and everyone, let's enjoy this activity at the Lodge, one of the two scheduled events there for the summer. Life members, if you need a ride to the lodge or assistance getting to it, please contact me and we'll try to get arrangements made for you. THERE MAY BE A PRESENTER, IF THERE IS SOMEONE SCHEDULED WE WILL UPDATE THIS EVENT
Aug 21 Fri – Aug 23 Sun	White Water Rafting Weekend - Green River Below Flaming Gorge (Aug 21-23, 2026) – class II+ – 7.0 mi – 100' ascent <i>Meet:</i> 2:00 pm at Dripping Springs Campground <a href="https://www.recreation.gov/camping/campsites/45713">https://www.recreation.gov/camping/campsites/45713</a> <i>Organizer:</i> Mike Rush 208-932-3882 rush.miked@gmail.com Back by popular demand! Last year, we had 14 adventurous WMC members join in all kinds of watercraft, and it was an absolute blast. We successfully floated both Sections A & B with a smooth shuttle-everyone loved the scenery, the camaraderie, and the fun rapids! What to Expect Section A: 7.2 miles from Flaming Gorge Dam to Little Hole Recreation Area Crystal-clear water, Class II+ rapids-perfect for honing your skills Towering canyon walls, lush vegetation, and abundant trout Section B: ~9 miles from Little Hole to Browns Park Slightly more challenging with faster water and additional rapids Wildlife sightings: deer, elk, and diverse bird species Both sections provide a mix of adventure and relaxation in a breathtaking setting. Trip Details Dates: August 21-23, 2026 Campground: Dripping Springs Group Site #1 (reserved) Cost: \$10 per vehicle per night (to cover campsite fee) Gear: Bring your own boat, PFD, and gear suitable for whitewater. If unsure, check requirements: <a href="https://www.blm.gov/sites/blm.gov/files/documents/files/BLMUTahGreenRiver.pdf">https://www.blm.gov/sites/blm.gov/files/documents/files/BLMUTahGreenRiver.pdf</a> Food & Drinks: Self-supported-bring your own. We'll gather around the campfire in the evenings. Logistics Carpooling strongly encouraged (organize via WMC boating email list) Shuttle arrangements will be coordinated at camp Possible runs: Section A Friday PM (if there is enough interest!), Saturday AM/PM, and Sunday; Section B for those interested (requires longer shuttle). If there is interest, we could float and camp along the river! Important WMC members preferred; non-members will have such a great time they will join the WMC! Young folks are welcome to join so long as they can float with us. Email me with your headcount so I know who's coming Don't miss this chance to experience one of Utah's most scenic weekend river trips! Last year was amazing-let's make this one even better!
Aug 23 Sun – Sep 2 Wed	Teton Yellowstone Car Camp – mod- <i>Meet:</i> Register with the Organizer <i>Organizer:</i> Michael* Budig, Dianne Budig 801-403-7677 mlbudig@gmail.com, mlbudig@gmail.com You are welcome to join us for car camping and day hiking in the Tetons and Yellowstone from Aug 23 thru September 2. You are welcome to join for any part or all of the trip. To join us, please make your own camping reservations for Colter Bay for August 23-26 thru Recreation.gov (we have campsite 75) and for Canyon Village for August 26-30 and Madison for August 30-September 2 thru Xantera. If you have any questions, please email mlbudig@gmail.com.

More activities are in the online calendar. Check <https://wasatchmountainclub.org/calendar> for updates. And subscribe to one or more activity email lists for short notice postings. Go to <https://wasatchmountainclub.org/email-lists> to subscribe (you'll have to log in)



# 50 Years Ago in The Rambler

Transcribed by Donn Seeley

Club activities for April 1976 [...]

APRIL 4 Sunday	ADVANCED NORDIC TOUR – KINGS PEAK. We will attempt the highest peak in Utah (13,528 ft.) on a one day tour, so you must be prepared for a 16 to 20 hour trip. Register with the leader, Dwight Nicholson [...]
APRIL 24-25 Sat.-Sun.	HORSESHOE CANYON. This feature lies on the north end of Canyonlands and offers some excellent petroglyphs and also magnificent scenery. We'll probably camp overnight in the canyon which will require backpacking. The number allowed on this trip will be limited. Call the leader for details and meeting place. Leader: Dorothy Holland [...]

## SETTLEMENT CANYON SKI TOUR February 21 by Dan Thomas

We met at O'Dell's shop for this Oquirrh tour on what promised to be a primo ski touring day. The skies had cleared after a snowstorm a day ago and the temperature remained in the 30's. This route had not been done recently, and without firsthand direction it took a while to get pointed the right way. Once properly squared away, we settled into an arduous series of traverses to gain the ridgeline.

The snow varied from cold metamorphosed powder through wet-warm to frozen wind pack. The view from the top was great. It showed that under the right conditions, this area has a lot of potential for midwinter touring. How anyone could schedule this perfect weather two months in advance is a mystery.

The route down, a steep protected gully, offered a fantastic opportunity for powder pigs and was soon desecrated with graceful S's and Polish 8's. The runout was just the right angle to avoid poling and the last arrived at the cars at 5:30 p.m.

Powder Pigs and Arduous Traversers: Dan Thomas, leader; Bob Lillian, Janeen Hill, Bonny Baty, Lourain Webb, Lyman Lewis, Charles and Emily Hall, George Swanson, Marty MacKnight, Jim Mason, Dave Hart, Jackie Thomas and Judy Davis.

## Wolverine Cirque Tour February 14 by Roger Rollins

Seventeen hardy (or disbelieving) souls ignored the threats of the weatherman and showed up for this snowshoe / ski tour. It didn't take long for the novice snowshoers to be introduced to the joys of falling face down in the snow with their feet gleefully suspended above the snow by an independent snowshoe.

By the time we reached the dam we were spread out into two groups, and the weather had deteriorated from a gentle snow to downright unappealing wind mixed generously with small stinging flakes. Those of us seeking majestic views and views of Majestic were rewarded with grand panoramas of 300 yards or less.

Before lunch it was determined that completion of the tour was inadvisable due to avalanche conditions. On the way down, some snowshoers were observed skiing on their snowshoes (and other parts of their anatomy). A pair of nordic skis were observed poking tentatively around a tree and a voice muttered, "I wish they'd told me how to get up in these things." Back at the dam the whole party carefully obeyed the "NO SWIMMING" sign. No casualties occurred between the dam and the parking lot, although the last one in was heard to shout joyously from the top of a snowbank "I'm back John. You don't have to send out a rescue party."

Leader: John Riley. Participants: John Hendrickson, Larry Hoskins, Sally Nelson, Susan Roche, George Mooney, Emily Hall, Pennie Pace, Jennie Massie, Jim Frese, Roger Rollins, Roger Rollins Jr., Bob Lillian, Brent Lillian, Phyllis Robison, George Swanson and Ann Wennhold.



WASATCH MOUNTAIN CLUB  
1390 SOUTH 1100 EAST #103  
SALT LAKE CITY, UTAH 84105  
Phone: 801-463-9842  
www.wasatchmountainclub.org  
info@wasatchmountainclub.org

PERIODICALS  
POSTAGE PAID  
SALT LAKE CITY  
UTAH

# Join the club

<https://www.wasatchmountainclub.org/join>

