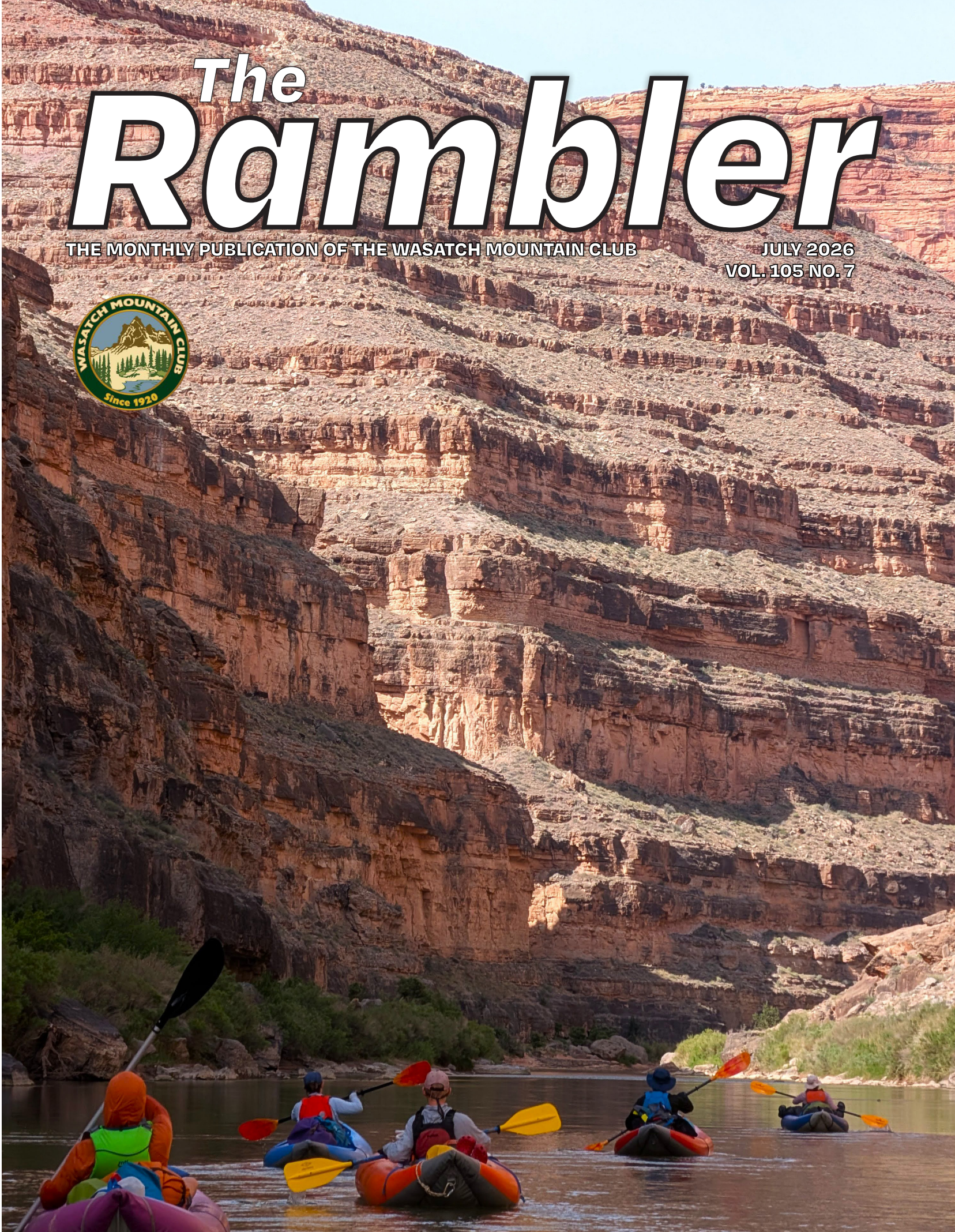


The **Rambler**

THE MONTHLY PUBLICATION OF THE WASATCH MOUNTAIN CLUB

JULY 2026
VOL. 105 NO. 7



GOVERNING BOARD / CONTACT US

EXECUTIVE OFFICERS

Mark Maier, President, 703-408-6912, president@wasatchmountainclub.org
Julie Kilgore, Vice President, 801-244-3323, vicepresident@wasatchmountainclub.org
David Ashley, Secretary, secretary@wasatchmountainclub.org
John Butler, Co-Treasurer, 801-654-8424, treasurer@wasatchmountainclub.org
Bret Mathews, Co-Treasurer, 801-831-5940, treasurer@wasatchmountainclub.org
Aditi Vashist, Co-Treasurer, treasurer@wasatchmountainclub.org

ADMINISTRATION

Deb Frank, Historian, 801-860-9251, historian@wasatchmountainclub.org
Bret Mathews, Information Technology Director, 801-831-5940, webmaster@wasatchmountainclub.org
Ann Trauscht, Membership Co-Director, 801-694-6337, membershipdirector@wasatchmountainclub.org
Chris Koch, Membership Co-Director, 937-689-3626, membershipdirector@wasatchmountainclub.org
Julie Kilgore, Merchandise Coordinator, 801-244-3323, merchandisecoordinator@wasatchmountainclub.org
Stephen Dennis, Member Discount Coordinator, 801-349-5635, discountcoordinator@wasatchmountainclub.org
Dea Nelson, Public Relations Director, 832-679-2146, prdirector@wasatchmountainclub.org
Arel Jimenez-Castro, Social Media Coordinator, 801-831-3273, socialmediacoordinator@wasatchmountainclub.org
Adam Marcus, Publications Director - The RAMBLER, 313-799-2326, rambler@wasatchmountainclub.org
Ben Wake, The RAMBLER Content Coordinator, 801-830-8631, rambler@wasatchmountainclub.org
Randy Long, Rambler Distribution Manager, 606-483-4087

BIKING

Craig Williams, Biking Director, 801-598-9291, bikingdirector@wasatchmountainclub.org
Cheryl Krusko, Road Biking Coordinator, 801-474-3759, bikingdirector@wasatchmountainclub.org
Daisy DeMarco, Trail Reporting Coordinator, 610-517-7867, trailreport@wasatchmountainclub.org

BOATING

Luke Johnson, Boating Co-Director, 801-755-7575, boatingdirector@wasatchmountainclub.org
Kay Tran, Boating Co-Director, 802-578-9397, boatingdirector@wasatchmountainclub.org
Bret Mathews, Boating Equipment Co-Coordinator, 801-831-5940, boatingcoordinator@wasatchmountainclub.org
Donnie Benson, Boating Equipment Co-Coordinator, 801-809-1854, boatingcoordinator@wasatchmountainclub.org

CLIMBING

Stephanie Stamm, Climbing Co-Director, 973-945-3755, climbingdirector@wasatchmountainclub.org
Nathan Chaffee, Climbing Co-Director, 307-371-6356, climbingdirector@wasatchmountainclub.org
Shane Wallace, Canyoneering Coordinator, 801-400-6372, canyoneeringcoordinator@wasatchmountainclub.org

CONSERVATION

Dennis Goreham, Conservation Director, 801-550-5169, conservationdirector@wasatchmountainclub.org
Brad Yates, Backcountry Access Coordinator, 801-592-5814, backcountryaccesscoordinator@wasatchmountainclub.org

HIKING

Frank Bouchard, Hiking Co-Director, 352-246-5304, hikingdirector@wasatchmountainclub.org
Tali Brenner, Hiking Co-Director, 312-405-9930, hikingdirector@wasatchmountainclub.org
Kerry Regan, Running Coordinator, 954-895-8627, runningcoordinator@wasatchmountainclub.org
Daisy DeMarco, Trails Maintenance Coordinator, 610-517-7867, trailscordinator@wasatchmountainclub.org
Daisy DeMarco, Trail Reporting Coordinator, 610-517-7867, trailreport@wasatchmountainclub.org

SOCIAL

Giulia Roselli, Social Co-Director, 801-809-6133, socialdirector@wasatchmountainclub.org
Leigh Maier, Social Co-Director, 703-408-5304, socialdirector@wasatchmountainclub.org
Chase Tharp, Social Co-Director, 801-891-6908, socialdirector@wasatchmountainclub.org

WINTER SPORTS

Kathleen Waller, Winter Sports Director, 801-859-6689, skiingdirector@wasatchmountainclub.org
Lisa Verzella, Skiing Coordinator, 801-554-4135, skiingdirector@wasatchmountainclub.org
Akiko Kamimura, Snowshoeing Coordinator, snowshoeingcoordinator@wasatchmountainclub.org

TRUSTEES

Michael Budig, Trustee (2023-2027), 801-403-7677, Trustees@wasatchmountainclub.org
Cheryl Soshnik, Trustee (2024-2028), 435-649-9008, Trustees@wasatchmountainclub.org
Julie Kilgore, Trustee (2025-2029), 801-244-3323, Trustees@wasatchmountainclub.org
Greg Libecchi, Trustee (2026-2030), 801-699-1999, Trustees@wasatchmountainclub.org
John Veranth, Trustee emeritus, 801-278-5826, Trustees@wasatchmountainclub.org



IN THIS ISSUE

- 4 Historian's Message
- 7 In Memoriam: Shelley Johannesen
- 8 USFS Roadless Area Conservation Rule Recission
- 10 Welcome New & Returning Members
- 10 Thank You April Activity Organizers
- 11 Activity Reports
- 36 Activity Calendar
- 47 50 Years Ago in the Rambler

ON OUR COVER:

Catching a spectacular view on the San Juan River while there's still enough water to paddle. See page 13 for details.



ON OUR BACK COVER:

Club members gathered at the summit of Mount Olympus to remember Shelley Johannesen. See page 31 for the full report.



The Wasatch Mountain Club is an outdoor recreation club for adults dedicated to fostering awareness of the scenic beauty of the Wasatch and encouraging preservation of our natural areas. Club activities include hiking, backcountry skiing/snowboarding, backpacking, camping, conservation, trail maintenance, canoeing, climbing, canyoneering, kayaking, mountaineering, mountain biking, road biking, river rafting, socializing, snowshoeing and multi-day adventures.

wasatchmountainclub.org
info@wasatchmountainclub.org

The Rambler (USPS 053-410) is published monthly by the Wasatch Mountain Club. Subscription rates of \$12 per year are paid for by membership dues only. Periodicals Postage Paid at SLC, Utah. 1390 South 1100 East #103, Salt Lake City, UT 84105-2443.

CHANGE OF ADDRESS/

MISSING RAMBLER: Login to the WMC website and update your Personal Information or email membershipdirector@wasatchmountainclub.org with your new address or to request a replacement Rambler. This publication is not forwarded by the Post Office. Allow 45 days for address changes.

POSTMASTER: send address changes to:

The Rambler, Membership Director, 1390 S 1100 E, #103, Salt Lake City, UT 84105-2462

Copyright 2026 Wasatch Mountain Club



Historian's Message

by Debra Frank

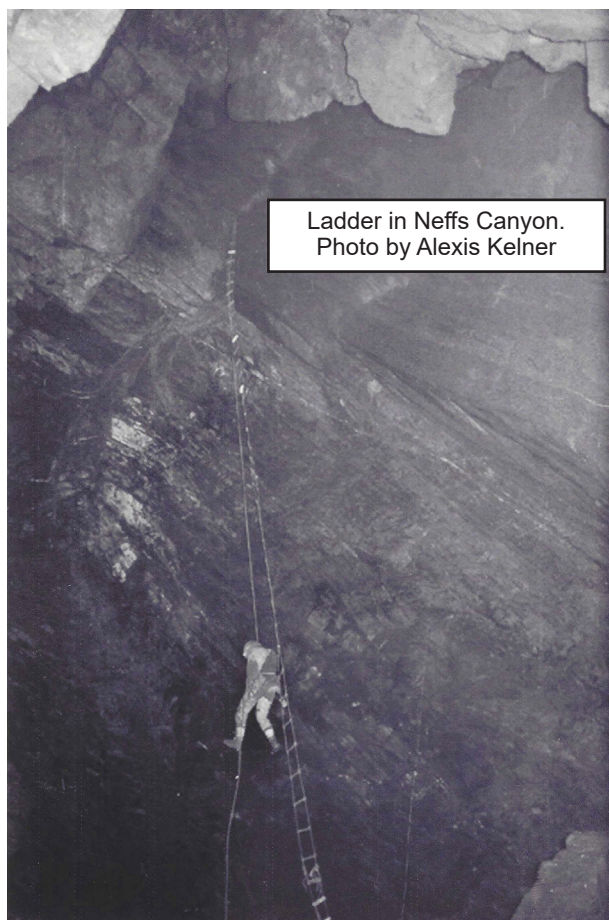
The books have arrived! We will combine the book launch with the Oldtimers gathering at the lodge from 2-5 pm on Saturday, July 25. The perfect venue! This will be such fun. If you're not local, you can order copies from me at debrawilsonfrank.com, and I will ship them to you.

Hello Clubbers,

On a recent visit with Alexis Kelner, I peppered him with Neffs Cave questions because I'm doing a presentation on Neffs for the Timpanogos Grotto. Alexis has explored Neffs Cave several times, including a mapping and measuring expedition carried out by the Salt Lake Grotto in 1956. It was Alexis who rigged the ropes, a detail not recorded anywhere else. That's the particular joy of getting to talk to Alexis, who has lived so much (70 years!) of our club's history and can describe club events from personal experience. (He was not old enough to join the WMC back in 1956, but O'Dell Peterson ushered him in anyway and even paid his dues.) It was Dale Green who brought cave exploration to the WMC calendar. He served as the club president for almost as many years as Julie and was a prominent spelunker in the community.

Besides the measuring expedition (which established Neffs as America's deepest cave at the time), Alexis also played a key role in the 1965 rescue of an experienced spelunker who collapsed several hundred feet from the cave's entrance. Jim Dowling, a graduate student, became exhausted near the top of a sheer ledge on his return trip from Neffs' floor. He dangled in his harness for eight hours in the cold, dripping cave, while his two companions attempted to reach him. They succeeded in lowering him to another ledge, but exhausted themselves, and were unable to rescue him. Wisely, they'd stationed friends at the cave entrance, who ran for help when the two emerged.

By that time, the WMC had been forced to cede its unofficial role as the search and rescue team of choice for the Salt Lake area and beyond. The club didn't give up easily. TQ Stevenson and Alexis wrote letters to local newspaper editors arguing that the WMC had knowledge of the local terrain and the physical training to carry out rescues



Ladder in Neffs Canyon.
Photo by Alexis Kelner



more effectively. But the law won out, and the Sheriff's posse prevailed. At least on paper.

The Sheriff's office received the call and rounded up a jeep posse. But they also knew to call the WMC and the Alpine Club. (In a previous Neffs Cave rescue in 1950, the Sheriff at the time, described as "portly", couldn't fit into the narrow cave, let alone move through it.) All in all, forty men showed up for the 1965 rescue, but only nine entered the cave itself; none of them from the jeep posse. Alexis was among the first to reach the victim, along with Dale Green, TQ Stevenson, and Dr. Gary Carlson. They were followed by Dave Ellsworth of the Alpine Club, as well as Don Sims, a University of Utah student, and LaVell Burnham—I'm not sure of his affiliation.

When the lead party reached Dowling, they dressed him in dry clothes and placed him in a down-filled sleeping bag. Dr. Carlson administered a tranquilizer to make it easier to transport him. The rescuers needed all the help they could get. Neffs Cave is notorious for its jagged rocks and narrow corridors. Even the sturdiest clothes are ripped to shreds after a day spent in Neffs. Add to that the darkness and steady dripping icy water, and the "vertical falls, steep ledges and slippery shelves," described by Ellsworth in a Deseret News article, and you have a "terrifying and exhausting operation." One of the chimneys described by Ellsworth was "thirty feet deep," and required the rescuers to "brace their backs against one side and their feet against another."

Alexis told me the rescue team worked three at a time to pull Dowling up, frequently rotating their positions to negotiate the tight channels and share the burden.

In fact, while the WMC and the Alpine Club got to work, the jeep posse stood by, watching and waiting. Alexis told me that they weren't even competent with their jeeps. When Dowling was safely tugged to the cave's entrance, they loaded him into one of their jeeps and proceeded away from the cave over nasty, rutted and rooted terrain. Alexis pointed out a jeep road close to the site, but the Sheriff's team insisted on their way, subjecting their patient to further torment. Meanwhile, Alexis and Dale drove down the jeep road.

At the hospital, the young man was reported to have a body temperature more than twenty degrees below normal, but his "critical" condition was soon upgraded. I'd assumed he made a full recovery, but just as I was submitting this column, I heard from TQ with his recollections.

I'm adding in his comments (almost) verbatim:

Ah, fond memories.

My wife, Mimi, and I had just gotten home from a weekend of strenuous mountaineering. It was a Sunday afternoon at about 4 pm when we got the call from Alexis or Dale Green to come to the rescue at Neffs. Mimi and I, along with others, headed for the cave. We organized and went in. We got out of the cave the next morning about 8 or 9 am. And I still remember that there was no coffee,



donuts, or anything else to refresh us, as the Sheriff's jeep posse had eaten it all while we were rescuing. We were a little disgruntled.

Alexis was certainly there, and I am sure Dale was too, as he was president of the local NSS grotto, but I don't have a recollection of him, just several of us struggling. I remember quite a battle to get Jim into the sleeping bag. He was catatonic, and it was hard. He certainly was hypothermic from hanging in a stream of cool water for 24 hours. I have vivid memories of pulling, shoving, and generally manhandling Jim in the bag to get him out of the cave. He must have had a lot of bruises. But the first task was to haul him up out of the water stream he'd been hanging in. That was hard too, especially to get him over the lip of the 100+-foot-drop into the Great Pit. (Deb note: The Deseret News account says that Dowling's two companions moved him to a ledge out of the stream, so this is a contradiction to their account. However, there was no escaping dripping water in the cave, so either way, Dowling was exposed.)

At the EMT's site or at the hospital, Dowling's temperature was measured at 76 degrees F. He lived for about 3 years, and then died, probably from organ damage incurred from being hypothermic for so long. -- TQ Stevenson

Ouch, the jeep posse consumed the coffee and donuts, leaving nothing for the rescuers? That reminds me of my favorite detail imparted by Alexis: The cake the WMC later celebrated with was shaped and decorated to look like a jeep posse. How I wish someone had saved a photo of it!

WFA CLASS

Wilderness First Aid (WFA) is a hands-on course that teaches you how to respond to injuries and emergencies when you're far from help. At \$275, it may feel expensive, but it's far less than the cost of an evacuation or medical emergency, and far easier than facing a situation where you don't know how to help.

DETAILS

DATE
JULY 25-26

LOCATION
WEBER STATE

PRICE
\$275

REGISTER NOW

- 50% REimbursement for WMC Members who organize 3 activities or more
- Limited spots available
- Hands-on certification course
- Be prepared when it matters most

SEE ACTIVITY ON WMC ONLINE CALENDAR TO REGISTER



In Memoriam: Shelley Johannesen (1973 - 2026)

By David Ashley

Shelley Johannesen, 53 years old, came to an early death due to injuries sustained following an avalanche on the descent of Nepal's Mount Makalu on Monday, May 11, 2026.

Shelley and I moved to Kamas, Utah in September 2024, deciding the greater Salt Lake City area would be an ideal home with what seemed like unlimited outdoor adventure opportunities. We joined the Wasatch Mountain Club in the summer of 2025. In the short time as a club member, Shelley had already participated in paddling (Labyrinth Canyon), multisport (Antelope Island), hiking (many Wasatch Front trails), Canyoneering (multiple Zion slots) and even a WFA class with the club. Considering Shelley and I were traveling for work roughly half of the year, she was an extremely active club member!

Shelley was born in Portland, Oregon, on February 7, 1973. She ran cross country in primary school, earning a scholarship to Boston College. Shelley met Ed McLaughlin while there and they married and had three children Hannah, Liam, and Rian. Shelley was both a wife, mother, and an educator. She taught in and managed schools in multiple locations as her family traveled around the East Coast following Ed's career in college athletics. Shelley earned her PhD in Special Education and became an education consultant to the New York City school system before retiring in 2020 as COVID shut down schools across the country. She and Ed divorced in 2022.

In her late 40s Shelley discovered ultra running, which led to adventure racing: running, mountain biking, and paddling while navigating to checkpoints using a map and compass. She participated in multiple US and World adventure racing championships.

Shelley was a talented high-elevation climber; she had a unique ability to get stronger above 20,000 feet. An incredible endurance athlete from ultra running combined with a unique ability to suffer through long duration endurance events from her adventure racing days, she thrived in high elevation expedition climbing. Club members fortunate to have joined an activity with Shelley would recall her frequent and loud "cackle" of laughter, thoughtfulness towards others, and perpetual smile.

We miss you Shelley; you left us too soon. We have so many more mountains to climb. With Love, your partner Dave.



USFS Roadless Area Conservation Rule Recission

By Dennis Goreham, WMC Conservation Director

In 2001, the USFS finalized the Roadless Area Conservation Rule. That rule established prohibitions on road construction, road reconstruction and timber harvests. The Rule initially covered nearly 60 million acres of USFS managed lands, including about 4 million acres in Utah.

On June 23, 2025, U.S. Department of Agriculture Secretary Brooke L. Rollins announced the intent to rescind the Roadless Rule. The USFS is currently working toward the next phase, which is completing a draft environmental impact statement and new proposed rule. Those are expected later this year.

On May 13, Save Our Canyons (SOC) organized a hearing on the USFS Roadless Area Conservation Rule. Before the hearing, the evening started with information tables and snacks. Stephanie Stamm, the WMC Climbing Co-Director hosted our table.

SOC moderated a panel with a variety of experts. That was followed with comments from many local elected officials and representatives from organizations including the Wasatch Mountain Club.

Below is an excerpt from the comment Dennis delivered:

The Wasatch Mountain Club has been recreating in the Wasatch and other public lands for over 100 years. We were created in 1920 making us the oldest local outdoor recreation and conservation organization in Utah and currently have over 1400 members.

The panel made great points about the reasons that Roadless Areas are important for public health, water quality, wildlife habitat, recreation, local economies and many more reasons. I would like to focus on the fact that the Roadless Rule is essential for preservation of Roadless Areas for their own sake.

The days of viewing public lands solely as a potential source of resources to be extracted are gone. All of us need to know there are some areas that will be preserved for current residents and future generations to enjoy. The simple knowledge that some landscapes are beyond the control of speculators and developers are comforting and essential to our mental well-being. There is virtue in solitude and connection with nature and is an important part of Roadless Areas.

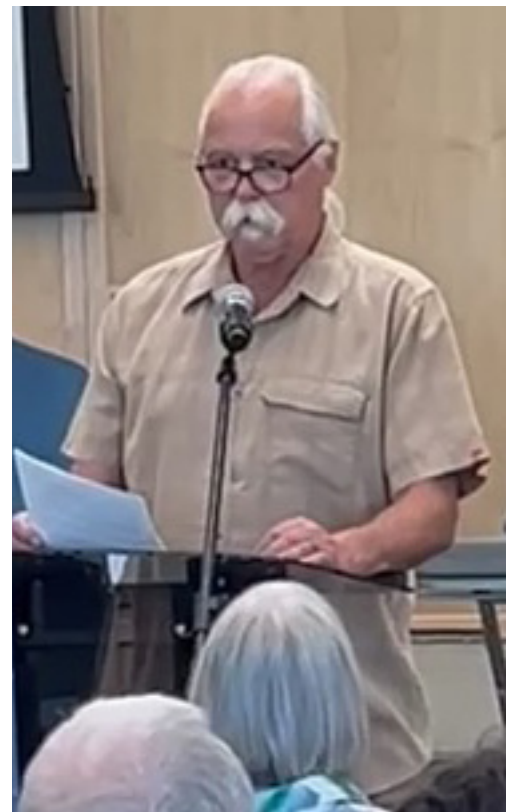
These areas are vital for backcountry recreation offering solitude away from developed areas. These areas attract visitors who spend money in the area on lodging, food, transportation, and gear. They also provide a buffer around designated Wilderness Areas offering more protection for these critical areas.

Roadless areas provide crucial benefits to personal health and the local environment. Some through opportunities for solitude, but also through better physical and mental health, clean air and water, and wildlife habitat.

Many people, even those who never visit roadless areas, derive value from these areas just knowing that they are preserved and intact.

Roads evolved over time where needed. For the most part, trails too. Let's now preserve as much as we can of what remains. The 2001 Roadless Rule truly was landmark environmental policy and should be kept intact and continue to preserve these precious lands.

The WMC will continue to monitor this issue and provide input at every opportunity.



Timpanogos Trail Project

JULY 18, 2026

9AM - 12PM

**Timpanooke Trailhead,
Timpooneke Rd, Provo, UT
84604**

Help the Pleasant Grove Ranger District to maintain one of the busiest trails in the provo area. Volunteers will help with garbage removal, brushback work, sign replacement, and more.

**RSVP
TODAY**



WELCOME

New & Returning Members

Aaron York
Ashlynn Whiting
Bill Davis
Bonnie Magnuson
Brian Stagg
Claire Ashcraft
Corey Welm
David Silverstein
Dianna Wright
Elise Garton & Justin Fuller
Eric Westhaus
Erik Nielson
Gary Baker
Gustavo Rojas
Hannah Spinner
Harold Chen
Irena Edwards
James Meszaros

Janna Schofield
Jason Gull
Jeff Matthews
Jeremy Henrie
Jill Brady
Joe & Taylor McAvoy
Josh Barilar
Josh Robertson
Joshua Newman & Katharine
Barnard
Joshua Peterson
Joslin Heyward
Karson Phippen
Kathie Keeler
Kathleen Bodenlos
Kathy Denton
Kirk Holton
Laura & Chuck Kennedy

Mardi & David Maack
Mary Wilson
May Rogers
Michael & Cara Haedt
Mikee Knoll
Nancy Luke
Nicole Leverenz
Peter Gordon
Petr Sedukhin
Richard Burrell
Ryan Thatcher
Samuel Alper & Alyssa DeRosa
Sharlene Evans
Stephanie Pflingsten
Sue Miller
Thomas Mazejy & Emily Kotnik
Tsokyi Choera
Vicki Collett

Thank You May Activity Organizers!

We appreciate you for your leadership, energy, and time for organizing amazing activities for our members

Aditi Vashist
Akiko Kamimura
Ambrose Curtis
Anja Wadman
Brad Yates
Brent McCormick
Bryan Mason
Cheryl Krusko
Chris Proctor
Chris Venizelos
Craig Williams

Dave Ashley
David Andrenyak
David Rabiger
Dea Nelson
Dennis Goreham
Donn Seeley
Donna Erickson
Eve Kovacs
Frank Bouchard
Frank Nederhand
Gail Coates

Giulia Roselli
Greg Libecchi
Hardy Sherwood
Hong Duong
Jennifer Shumaker-Parry
Jim Kucera
Jose Pacheco
Julie Kilgore
Kathleen Waller



Activity Reports

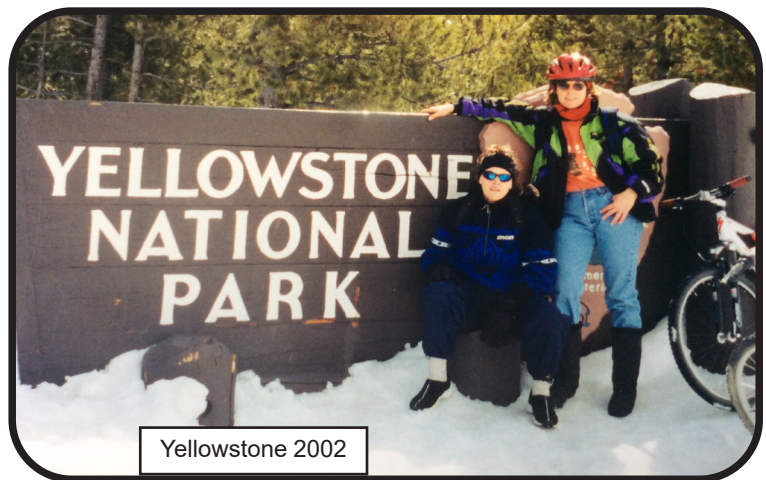
Hike-paced Yellowstone Bike Ride - April 10-12, 2026

Organized and report by Julie Kilgore

Participants: Rod Collins, Jack Hollingsworth, Keith Markley, Dave Vance, Dik Drake, Paige and Mac, Dick and Cindy Smith, Liz Copeland, Sandra Ferrari, Barb Gardner, Bret Mathews and Irene Yuen, Ed and Deanna DiBella, Danette Carlson, Mary Friedman, and Robyn Pels.

In mid-April 2002, on the weekend before Yellowstone National Park was due to open to cars, my sister Cheryl and I rode our bikes through the west entrance. It was a well-kept secret that this is an ideal time to take bikes into the park because the roads have been cleared of snow, giving us exclusive access—except for the wildlife—as we'll soon see. I talked my sister into this little adventure (as I often do), and she grudgingly agreed. She was pregnant with my niece at the time.

Yellowstone in mid-April is a tad unpredictable. There are no services and little opportunity for help if needed. And the animals look and feel a LOT different on a bicycle than in a car. This was a one-and-done event for my sister (as often happens), but I was hooked. I had been to Yellowstone many, many times, but this was a completely different way to experience Yellowstone.



Yellowstone 2002



Yellowstone 2026



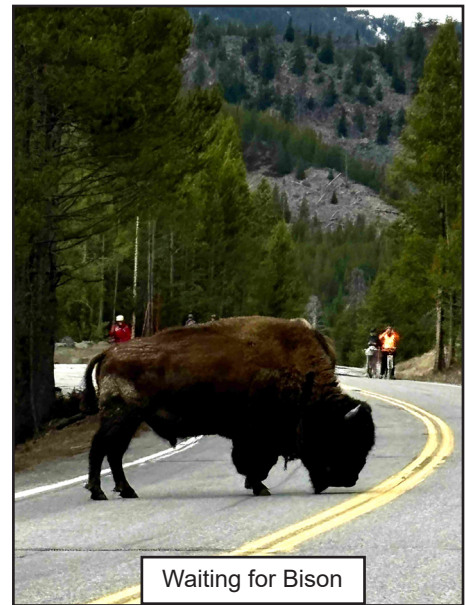
For the next few years, I invited various friends and family to join me on this pre-season bike ride, but there wasn't much enthusiasm. I rode into the park alone a couple of times, just far enough to see a majestic herd of bison. The last time that I went in by myself, I had to hop off the bike and plop myself up on the snowbank to let the bison herd pass me by. That's when I had an epiphany: "This is amazing, but this is stupid. I have 1,000 friends in the WMC. If I post it, someone will come with me."

It was a tough sell at first. In 2012, the first time I organized this as a WMC activity, I made the mistake of posting it on the calendar in the "bike" category. WMC bikers take their biking very seriously, so I received several incredulous inquiries about driving 5 hours to get to Yellowstone for a 30-mile ride in what could well be a combination of sun/snow/rain/wind/hot/cold. It made no sense to them! That first year, only three ladies braved the spring conditions. And they were all hikers.

From that point forward, I reframed this adventure as a "Hike-Paced Bike Ride," meaning that it would be a slow, meandering, take-your-time, take-lots-of-pictures, hang-out-with-the-animals experience.

Oh, how the WMC group has grown since those early days! Unfortunately, so have the crowds. Like most everything else, biking with the bison in Yellowstone before the cars are allowed (with the exception of occasional park personnel) on the roads is no longer a secret. These days, hundreds of bicyclists ride into the park during this special time of year. But even so, it's so very quiet and (mostly) calm. There is an occasional bicycle ding-ding, but no motors, no honking, no long lines to get into or out of the park. Just peace and quiet. And wind, and rain, and snow, and cold, and heat. But you just come prepared for all of that.

Back to my niece. She made this ride back in 2002, seven months before she was born. This year, Bike Ride 2026, Paige Williams returned as a WMC member and joined us for her first "solo" bike ride! Welcome back.



Waiting for Bison



Paige Williams 2026

A "Do the Book; Live the Legacy" Note by Deb Frank



In 2013, Julie posted this ride for the second time. The dramatic weather shifts and the risks of sharing the road with dangerous, very large animals were on full display that year. Barb Gardner hadn't fully heeded Julie's warning about the weather and found herself miserably wet and cold and stuck behind a herd of bison. Park regulations call for maintaining a 75-foot distance from bison—which meant that Barb was about 74 feet closer than she should have been. Happily, Barb is still very much among us, so you know it came out okay—but you don't want to miss the adventure she shared with Robert Turner and others that year.



Robert Turner and Barb Gardner in 2013

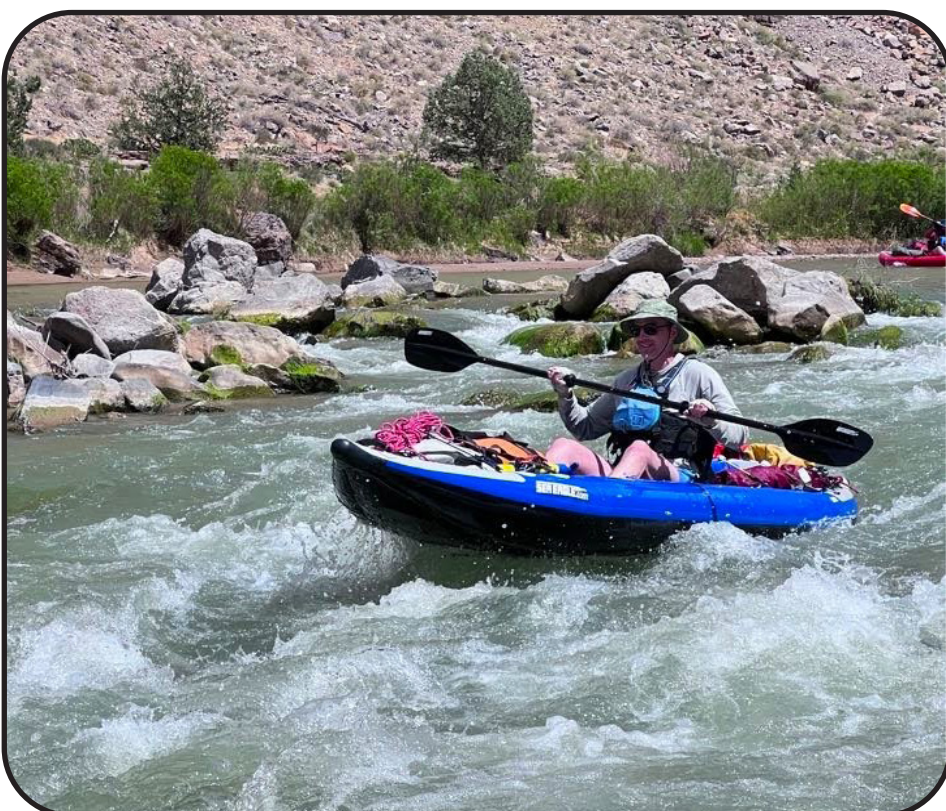


White Water Rafting San Juan River - April 22-27, 2026

Organized by Luke Johnson and report by Da Yang Wipfel

Participants: Luke Johnson, Greg Clark, Mike Rush, Madison Hoover, Kaylee Paterson, Da Yang Wipfel, Shannon, Erik, Liam

Luke Johnson led 9 of us on a spectacular adventure down the San Juan River from Mexican Hat to Clay Hills – arguably the most gorgeous stretch on the San Juan. At only 365 CFS we were constantly on guard to read the sneaky sand bars. Fortunately, our boats consisted of 6 Iks and 2 canoes with no big rafts. The water was amazingly clear and green! The weather was perfect until the fourth day when the wind really picked up. Extremely strong canyon winds turned our peaceful river flow into a wrestling match with Mother Nature. I got blown down to the ground and used everything I had to try to anchor my feet in the sand in order to avoid being





blown away! Erik and Shannon tied my IK to their canoe. Luke walked all the way back to help me and Kaylee with our IKs. The moment created an unreal picture, just like a Salvador Dali's painting. Imagine, men pulling the boats on the golden sand with gorgeous red canyon cliff on both sides, then dust devil dancing around. I wish I could have somehow captured the dramatic view, but my hands had a death grip on the boat for fear I could become airborne!





Despite the wind, we had a wonderful time. Everyone shared stories and laughter. Everyone tried to help each other. It was a true Wasatch Mountain Club spirit! A special thanks to Kaylee for sharing her permit with us! Many thanks to Luke for organizing this trip and hauling all our gear. Thanks to Shannon and Erik for sharing their knowledge and helping hands. Thanks to Mike and Madison for driving us and

sharing so many fun stories. Thank to Greg for his non-stop humor and always being the 1st one ready. And thanks to Liam for helping paddle multiple times on the exciting Class III Government Rapid! What a wonderful adventure!



Trail Running in Zions - May 1-3, 2026

Organized by Kerry Regan and report by Frank Bouchard

Participants: Kerry R, Frank B, Steph S, Nathan C, Bryan M, Tali B, Jorge T, Kiki M, Eric W, Eric L, Katie L, Colin S, Jimmy S, Colton W, and Joslin H.

As the WMC running group has expanded, our weekly Wednesday runs have become a breeding ground for ambitious destination runs. One that was discussed was the Zion Traverse. Spanning 37 miles of mind-blowing terrain, the route begins in Kolob Canyon, winds through the serene Hop Valley, and skirts the West Rim before a quick descent into the main canyon via the Walter's Wiggles switchbacks.



The morning crew. Photo by Bryan Mason

Fifteen of us drove south on Friday, establishing a basecamp on BLM land just south of the Kolob entrance. We all got to bed early in anticipation for a massive day. The 'first-halfers' woke up in the dark and got on the trail just when the sun was rising. The first half



Early morning in Hop Valley. Photo by Eric List



The crew making their way through Hop Valley

of the route is mostly through Hop Valley, which although plagued by sandy trails and many river crossings, is about as scenic as the main canyon but without the crowds. The 'second-halfers' were parked at the Hop Valley trailhead where they were able to relieve those who were done running, and resupply the hardy souls that wanted to continue on. They then met the



runners again at Lava Point where a few others dropped out and the 'second-halfers' joined the group for the rest of the route.

The runners continued to the West Rim and descended into the main canyon where they caught the Zion shuttle to the visitor center. Eventually everybody made it to Springdale



Following the river through Kolob Canyon

Jorge showing off his running form.
Photo by Kerry Regan



Incredible canyon views from the West Rim

where we could get showers, cold drinks, and a warm meal before heading back to the campsite for the night.

The weekend was also peppered with some side-excursions: Nathan and Eric did some multi pitch climbing routes. Frank rode his bike 38 miles on dirt roads from Lava Point back to Kolob Canyon. A group of five attempted a Sunday morning trek to Toquerville Falls, but the oppressive desert sun and steep grades forced them to retreat early. The trip was exhausting and fun. Steph, Jimmy, and Jorge all crossed the finish line having completed their longest mileage runs to date. Everybody pushed themselves and were rewarded with some amazing views and good company.



Dinner and drinks at Springdale



Packrafting and Backpacking Meander Canyon and the Maze - May 1-7, 2026

Organized and reported by Katherine Thom

Participants: Matthew Lipton, Steve Maliszkeski, Mike Seaman, Katherine Thom. (Lisa Verzella wanted to join us and we hope she can join next time)

May 1-2 - We met up at Utahraptor State Park, about 15 miles northwest of Moab, and got acquainted before we would spend almost a week in the backcountry together. Two out of the four were new to packrafting, so gathering the night before allowed us ample time to go through logistics. After dropping our shuttle vehicle off with a "low budget" operator the next morning, we made our way to the Potash Boat Ramp on the Colorado River to get our boats ready to run. A ranger at the ramp checked that we had the required gear. Being in a packraft or other portable craft means you don't need to meet all of the larger raft requirements, but the Park Service is still trying to figure out what truly applies. For example, we were checked for PFDs but not inflating devices (critical!). Traffic on the ramp was no problem and we got our first introduction to a large group of Alta employees on large oar boats tied together to make motoring through the flat sections a bit faster. We had three packrafts, all with internal boat storage, and one inflatable stand-up paddleboard. There was a little trial and error on how to pack and inflate the boats in the first hour or so on the water, but then we had smooth cruising through the canyon as civilization slowly dropped away.

The abundance of birds in the canyon was noticeable. We readily saw crows, geese, ducks, herons and sandpipers. We could feel the flow of the river, but at a CFS normally experienced in Fall, we were not getting much of a speed boost. We learned quickly how to predict the locations of sandbars in the twists of the river, but also benefited greatly by having a Stand-Up Paddler (SUP) who could spot them faster. Despite the later-than-planned start, we managed to knock off 15+ river miles on day one, which was right on target for our goal. The map had marked primitive "campsites" but low water and deepening tamarisk groves made them nearly impossible to access. The first night we had a manageable but steep bank to get up, but the spot at Musselman Canyon was flat and scenic. We woke up to a turkey vulture patiently waiting near our site to see what goodies we might have left behind.

May 3 - The next day we got an earlier start, hoping to spare ourselves as much afternoon wind as possible. After a few hours we made it to Lathrop Canyon where we were reunited with the Alta flotilla. They helped us locate the ruins up in the cliff (pictographs too) and offered us a few river-cooled beers. The trail was well worn but snaked

all over the hill and didn't always lead to anything. We took a bunch of photos and moved across the river, where we had a picnic lunch at the day-use site and took advantage of the only pit toilet on the route. Without any marked campsites after that, we ended up settling on a large sandbar to spend the night. Going



Matthew at the pictograph of a horned animal panel near Lathrop Canyon (barely visible)



Matthew at the ruins near Lathrop Canyon



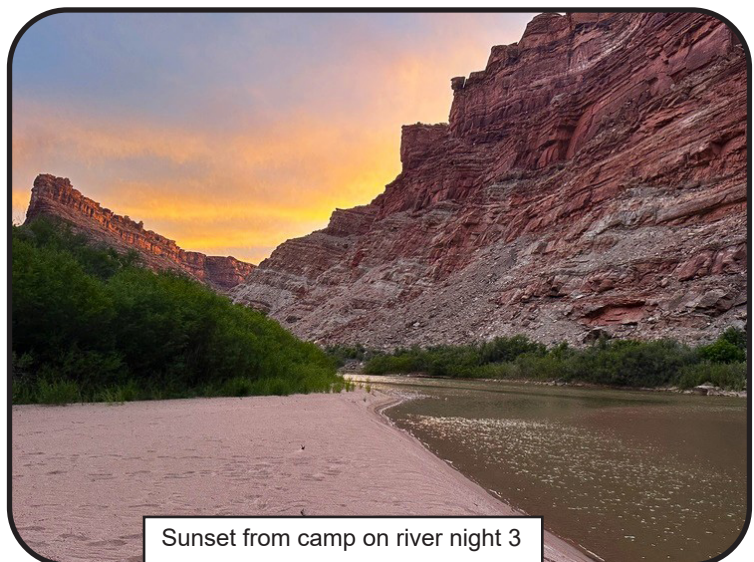
up one of the side canyons seemed attractive, but they were too steep and choked with brush in many cases. Since we had started early enough, we had plenty of time to socialize and take golden hour photos of the bright cliffs around us. The first few nights, the songbirds were active through most of the night, even making it hard to settle down and sleep.

May 4 - We were still shooting for that illustrious "early start" as we set off the next morning. Within a few hours, we could hear the sound of fast moving water and wondered what we were about to encounter. It turned out there were some class 1+ rapids to enjoy on river right



at Indian Creek. We practiced paddling steadily and bracing to stay balanced. It was a fun initiation to whitewater in a packraft for those of us trying it for the first time. This was to be our longest day because we were trying to get through as many miles as possible so we could finish the remaining river miles and make it well into the Maze in the same day. The wind had other ideas and we settled on 20 miles. Although we enjoyed lovely still water around The Loop, a double oxbow in the river, the full force of the wind was felt as soon as the high cliff walls were no longer breaking the wind coming up from Cataract Canyon. We hugged

the right bank. Crossing to the left was impossible. We also had what we thought was going to be a larger rapid (class II max) at The Slide. This was a narrowing of the river next to a steep pile of rocks. It didn't make any noise at all and turned out to be barely a riffle. The low water was not enough to create the usual force experienced at that narrowing. From there we had hoped to make it at least to the confluence, but the wind was too much. We finally settled on one of the favorite sandbar campsites of the trip, just enough out of the wind to keep the tents upright with some helpful and creative anchoring. We had a little bit of rain that night.



May 5 - The morning was still quite windy. We crossed the confluence and noticed the slight color change in the water of the wide channel. It seemed like a long way to our takeout



and we were careful to not miss it as we knew the banks got much higher the further we went down Spanish Bottom. We finally found our takeout beach and got our stuff organized. We



Expansive view of Spanish Bottom and the Colorado

assembled boats, paddles, extra water, sandals and a throw bag under a bush near our approved cache site. From there we donned our backpacks and headed across Spanish Bottom. The trail climbed up to the rim along steep switchbacks and the sun beat down on us as we climbed 1000 feet in a mile. At the rim we ran into the group from Alta again. We had lunch among the rocks in the Dollhouse and then continued on to Beehive Arch. The route went in and out of washes and the day was still pretty hot. We eventually took stock of our remaining water and time to assess whether we could safely make it to Water Canyon, our planned destination. We knew we would not be well equipped for a dry camp if we did not



Finally arrived at the Dollhouse in the Maze zone of Canyonlands

make it, so we opted to turn around. It was disappointing because of all of our desires to spend more time in the Maze, but we had to make the practical decision in the moment. If we had planned to dry camp or had experienced less wind on the river in the days before, it might have been possible. We made our way back to Spanish Bottom still in good spirits and found a nice shady spot close enough to the river to get more water to settle and filter. Looking at the lack of options for our remaining days without climbing back up to the Dollhouse, and noting that the temperatures would climb to the mid 80s on our last day, we decided to cut the trip a day short.

May 6 - After a relaxing morning with some brief rain, we packed up camp and retrieved our cache. A group of park rangers were watering baby cottonwood trees so we chatted with them briefly while we got ready to launch back onto the river. We had some tense moments with our packraft zippers (finicky things!) but were able to have an uneventful crossing to the Needles side of the park to our exit canyon, Red Lake. We got all of our gear including our boats into and onto our backpacks and then compared notes on how heavy they seemed. It was amusing to see our stuff strapped to the outside and paddles sticking up over our heads. The walk through the wash was fine, despite the intense sun of the afternoon but the steep climb to the upper





Matthew, Katherine and Steve (L to R) loaded up with their boat-containing packs



Matthew, Katherine and Steve (L to R) with their heavy packs in profile view

portions of the trail was very taxing with that much load. We got separated for a bit but were able to find suitable dry camping before nightfall.

May 7 - We still had about 8 miles left on our last day but the walking became easier for a while in Cyclone Canyon which turned out to be shady and picturesque that time of day. Once on the final 4 miles, which was the trail to the Confluence Overlook, the terrain changed again. Now we had slickrock sections with large step-ups and step-downs. All would have been relatively easy without the very heavy packs. We took turns assisting each other



Matthew and Steve walking up Cyclone Canyon in the Needles district

up and down, offering hands, holding poles, spotting a big step or helping to get a pack on or off. It was tedious but we continued to make forward progress. We stopped for snacks in the shade and enjoyed the views of the sandstone "needles" in the distance. When the parking lot came into view, it got our hopes up that we would be finished soon. Unfortunately, we had to first drop down into and then climb out of a wash with steep walls. At one point there was a metal ladder fixed to the rock. That was a welcome sight compared to the careful foot placements we needed on some downclimbs. Finally out of the wash, we were back on pavement. We encountered yet another ranger who this time asked to see our permit and our human waste storage systems for the river (wag bags and a hard plastic screw top "jar"). We threw our gear in the bed of the shuttle truck and enjoyed air conditioning for the 110 miles back to our cars at Potash. After that we met up at Milt's in Moab for burgers, milkshakes and fries. Although we might have liked beers as well, we figuratively toasted to a safe and semi-successful trip.

Millcreek Canyon Loop Hike, May 10, 2026

Organized and reported by Dave Andrenyak

Participants: Mark Tuttle, Ann Woodbury, Rob Oldenburg, Sophie Schnelzer, Dave Andrenyak.

Our Mother's Day Millcreek Canyon loop hike started at the Millcreek Canyon road / Terraces Picnic Area road intersection. We hiked up the Terraces road to the start of the Terraces to Elbow Fork trail. We continued on the Terraces to Elbow Fork trail. We ascended to a high point at around 7300 feet and descended down to the Millcreek road at Elbow Fork. After a snack break, we returned to the starting point by hiking west on the Millcreek Pipeline trail. Some of the great views along the hike included Grandeur Peak, the snow still covered upper north facing Millcreek Canyon slopes (including Mount Raymond), Burch Hollow, Elbow Fork, and the Mount Aire area. There was good diversity of plants and trees along the trail. Flowers in bloom included Oregon grape, ballhead waterleaf, larkspur, arrow leaf balsam root. The low snow winter and warm spring temperatures resulted in dry trail conditions on the north facing aspects in early May. Thank you participants for the cordiality and excellent conversation.



At a sunny trail section with mountain mahogany, scrub oak, and sage brush. L to R- Mark Tuttle, Ann Woodbury, Rob Oldenburg, Sophie Schnelzer. Grandeur Peak is in the background.



Rock Climb Pete's Rock, May 14, 2026

Organized and Steph Stamm and Paul Gettings, report by Steve Duncan,
Photos by Lars Hadley

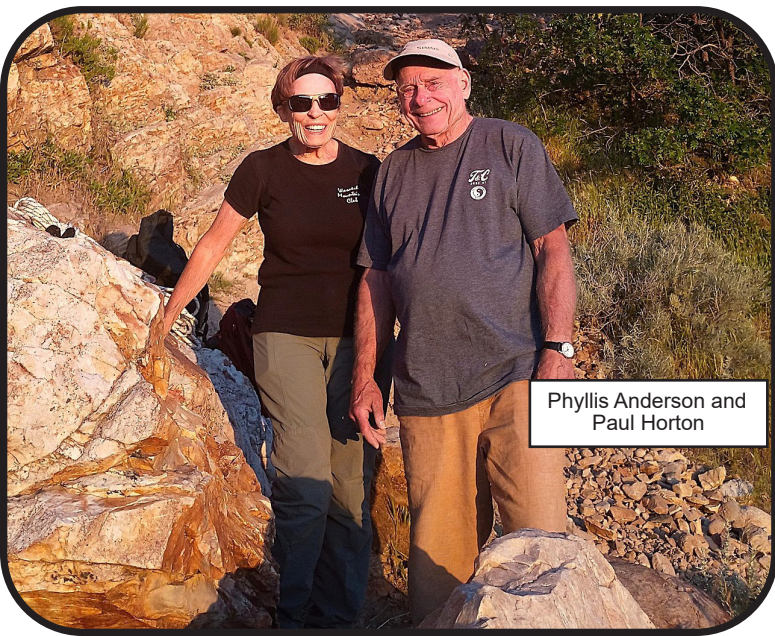
Pete's Rock has been hosting WMC climbing outings for decades. Long ago, club members painted numbers on the south side of the rock to show the start of the various routes. While the numbers are gone, and the sketchy trad anchors on top have been replaced with bolts (thanks, canyoneers!), the climbing is as good as ever. Our group had the largest age range I've seen at any club outing, from folks who may have known Pete O'dell Peterson in their youth, to youth who chuckle at 6-7 and chopped uncs. I'm used to being the senior in the climb group but Phyllis Anderson and Paul Horton, who both have me by a number of years, showed up for the occasion. Phyllis brought some old climbing pitons and such to show off but Paul came ready to climb and climb he did! He not only climbed several routes but I watched him finesse his way up an overhung and pumpy 5.9. Everyone had a blast climbing and relaxing with the Salt Lake valley as the backdrop.



The group on some upper climbs



Tim working his way to the 5.9 left and Chris to the right on an easier line



Phyllis Anderson and Paul Horton

Paul Horton sometime in the 1960's climbing Pete's rock. The numbers have been gone for many decades and indicated different routes. They apparently weren't in any particular order.

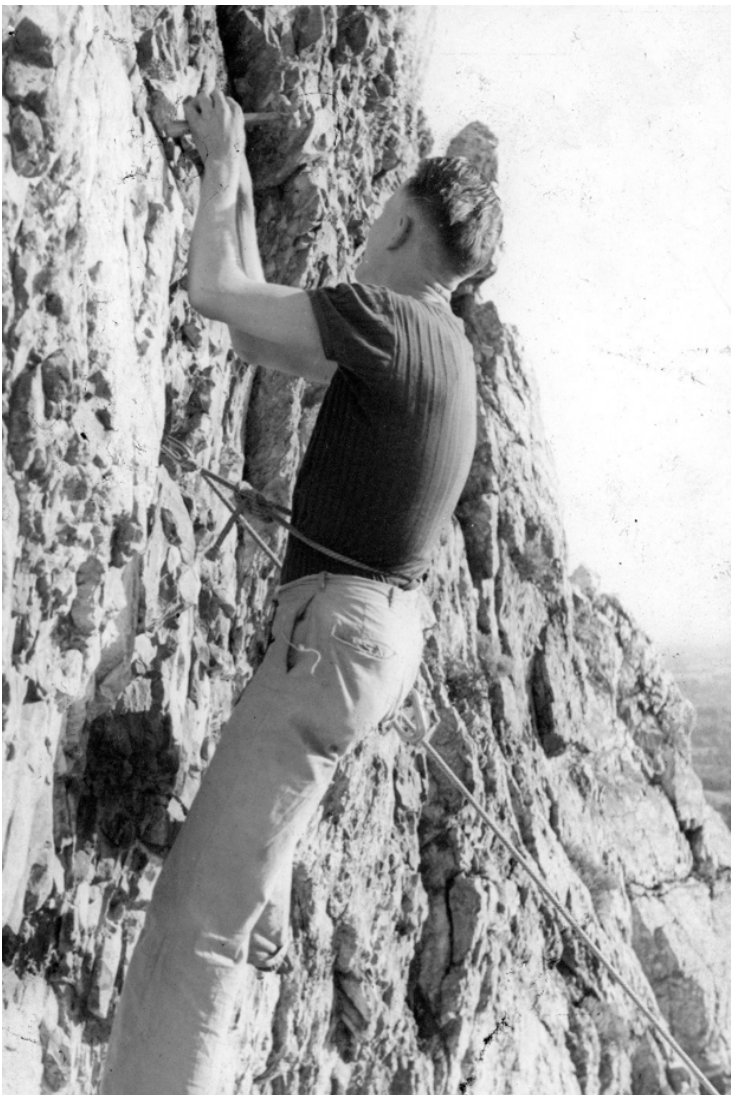


A "Do The Book; Live the Legacy" Note by Deb Frank

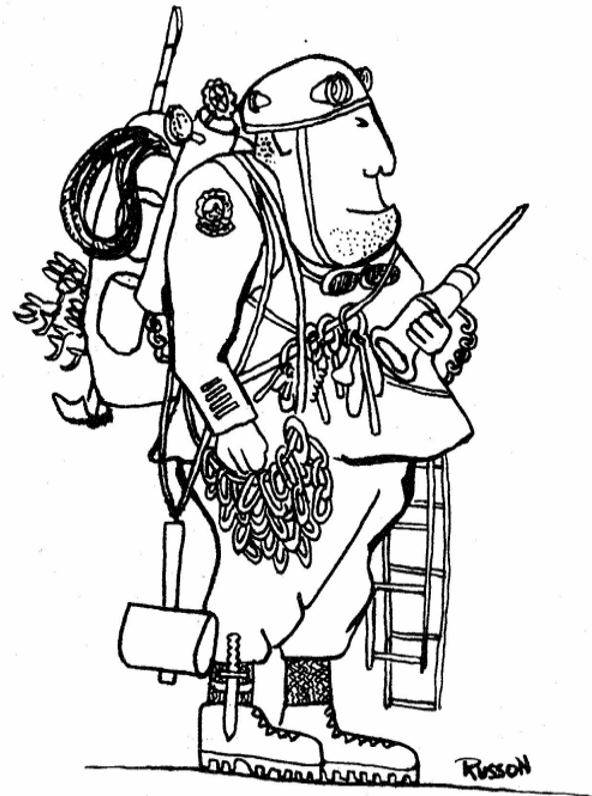


The club took up rock climbing in 1933, according to a 1958 article in the Salt Lake Tribune. At first, they went to Storm Mountain, but that was a long way to go for weeknight practice sessions. When Bert Jensen, a well-known climber and skier from New Hampshire, and O'Dell "Pete" Petersen discovered a 100-foot+ quartzite structure overlooking Wasatch Boulevard at 5300 South, they knew they'd found something special. The Tribune article describes it as "Kindergarten for new climbers," but in fact, those Kindergartners could advance all the way through graduate school on Pete's Rock, at least in the early decades of climbing before modern equipment. The cartoon below appeared in 1966—the rock was well on its way to iconic status!

I love that Paul's "do-the-book" event drew a wide range of ages, because this has always been true of Pete's Rock. I can't locate the reference after a quick search, but I understand that the famous climbing family, the Lowes, learned to climb at Pete's Rock, at tender ages—as young as 6, if memory serves. Ralph, Mike, and George Lowe all appear in *Faint Heart Never Climbed a Mountain*.



O'Dell "Pete" Petersen on Pete's Rock



"Can you direct me to Pete's Rock?"



Rock Climb Like a Girl Challenge Buttress - May 21, 2026

Organized by Stephanie Stamm

The May 21 edition of Climb Like A Girl brought thirteen crushers to Challenge Buttress, where we lived up to the area's name by throwing ourselves at some of the canyon's tougher routes.

Sharon kicked things off, putting up the most accessible route in the area, Sweet and Low, 5.5. Steph was humbled on Coral Bells Arete, a burly mixed trad and sport climb. After setting aside any pride and stick-clipping the first two bolts, she battled her way up the route and stuck the finish. Janna put on an impressive performance on MEGA, a full-value 35-meter pitch featuring an overhung, cruxy section in the middle.

The evening also featured several exciting milestones. Gail climbed all the way to the chains on Sweet and Low. Kalyee, MJ, and Irene joined us for their very first club climbing event. Tsokyi shook off the winter cobwebs with her first outdoor climbing day of the season.

By the end of the evening, thirteen climbers had shared plenty of laughs, encouragement, and hard-earned victories. If you've been thinking about joining us, we'd love to have you come out for a future Climb Like A Girl outing.



Hike Flagstaff Mt. & Emma Ridge via Alta - May 23, 2026

Organized and reported by Akiko Kamimura

Participants: Akiko Kamimura, Ed Hemphill, Brennan Apilungo, Don Tillman, Thomas Fu, Mitch Dutt and Jim Raune

July is usually the best time to do this hike. However, due to the low snowfall this winter, the route was already in good condition for hiking. Out of seven hikers, two hikers hiked this route for the first time since they recently moved to Utah. The route had some snow, especially on the ridgeline and the north-faced slopes. The Prince of Wales Mine Trail still had lots of snow. We took a "short-cut" trail to go down to Twin Lakes Pass Trail from near Davenport Hill to go back to the TH in Alta.



Summit photo at Flagstaff Mt. Front row from left – Jim, Akiko & Brennan. Back row from left – Thomas, Don, Mitch & Ed.

Lookout Peak via Pinecrest - May 24, 2026

Organized and reported by Akiko Kamimura

Participants: Akiko Kamimura, Thomas Fu, and Bettina Dunohue

Bettina, Thomas and Akiko hiked to Lookout Peak (8955 ft) via Pinecrest which is not a standard route. This route is much longer than the standard route but is on the beautiful ridgeline. It was the first time for Bettina and Thomas to hike to the peak. From the Pinecrest TH, we followed the Old Mine Road Trail to the ridgeline trail (Freeze Creek Trail). We hiked to the north on the trail and then turned to the northeast to bag West Lookout Peak (8828 ft) and Lookout Peak. There were short sections where the trail was not clear. But overall, the trail was in a good shape all the way. We saw 10 other hikers who came from the standard route at the summit of Lookout Peak. Although it was a long way to make the peak, it was worthwhile to enjoy solitude and wonderful views.



Summit photo at Lookout Peak. From left – Akiko, Thomas & Bettina



Hike Beartrap Fork - May 24, 2026

Organized and reported by Dave Andernyak

Participants: Dave Andrenyak, Brennan Apilungo, Carol Masheter, Holly Pearson. Jim Kucera, Steve Duncan, and Robert Glenney

There are many beautiful areas and wonderful trails in the Central Wasatch. One of the less visited areas in Big Cottonwood Canyon (BCC) is Beartrap Fork. Beartrap Fork is on the north side of BCC and is between Mill D North and Willow Heights. For our Sunday May 24 hike, we started at the watershed protection gate just off the BCC road. We hike up the steep trail that goes up Beartrap and junctions with the Wasatch Crest trail. Just to the west of the junction, there is a short slope that has great views of Desolation Lake and BCC. The upper north facing BCC slopes still had snow cover. We ate lunch at that overlook. With the exception of a few short snow covered sections, the trail was dry. There was a diversity of terrain and plant zones

along the trail. The trail passed through mixed aspen/conifer forests, a large meadow, and steep open slopes. Spring Beauty (*Claytonia lanceolata*) flowers covered the steep upper slopes. Although peak wildflower bloom was still to come, we saw some bluebell, valerian, and sticky geranium flowers. On the hike up, we saw a young male moose at the north end of the large meadow. As always, there was great fellowship and conversation during the hike. participation.



Hike BST to Bear Canyon Suspension Bridge - May 30, 2026

Organized and reported by Frank Bouchard

Participants: Frank Bouchard, Jim R, Ann W, Charity W, Bonnie M and Eric

Given the cold morning downpour, I was skeptical that anyone would brave the weather for the pre-social hike. To my surprise, five dedicated hikers were waiting in the parking lot, suited up in their rain gear and raring to go. We were completely drenched within minutes as we pushed forward through muddy puddles to the Bear Canyon suspension bridge and back. The rain finally let up as we returned. We had just enough time to swap our soggy layers for dry clothes and head over to the new member social.



Climbing - High Angle Self Rescue - May 5-26, 2026

Organized by Paul Gettings. Report by Steph Stamm.

Every Tuesday this May, Paul Gettings ran his 10th annual High Angle Self Rescue Training series. Each class focused on a rescue scenario and built upon the skills learned the week before: escaping the belay, ascending a fixed line, hauling an injured climber, and finally tandem rappelling. Along the way, Paul emphasized a few core rescue principles, chief among them: don't make the situation worse. Another favorite lesson was to "start by smoking a cigarette" - take a moment to assess the situation, understand what happened, and develop a plan before rushing into action.

The series kicked off on **May 5** at The Speed Trap in Big Cottonwood Canyon, where participants learned how to escape the belay. In this scenario, climbers were attached to a ground anchor while their partner was "unconscious" and weighting the rope. Students learned how to transfer the climber's load to the anchor, allowing the belayer to safely leave the system and assist the injured climber. Once everyone had practiced escaping and re-entering the system, the group celebrated Nathan Chaffee's birthday with an assortment of baked treats before heading home.

On **May 12**, club members gathered at Dogwood Crag to learn how to ascend a fixed rope. Building on the previous week's lesson, students imagined that they had already escaped the belay and now needed to reach their injured climber. Participants learned to construct a foot loop with a friction hitch, use a second hitch or mechanical ascender for progress, and efficiently climb the rope by alternating between the two systems. They also practiced passing pieces of protection while ascending, an important skill when the rope runs through intermediate gear placements.

The third session, held on **May 19** at Ledgemere, focused on hauling an injured climber. Participants learned how to rig and operate a 3:1 hauling system, including techniques for capturing progress with friction hitches and reducing system friction. Many were surprised by how easily a properly constructed hauling system could raise a climber significantly heavier than themselves. As always, the evening featured plenty of discussion about alternate rigging methods and rescue considerations.

The series concluded on **May 26** with tandem rappels. Participants took turns playing both rescuer and injured climber while practicing techniques for safely descending with a partner who could not rappel independently. Students learned how to rig the system, securely attach the injured climber, and manage the descent while maintaining control and safety. The evening also happened to be Steph Stamm's birthday, giving everyone another excuse to enjoy homemade baked goods between rescue scenarios.

Over four evenings, participants gained hands-on experience with rescue techniques that most climbers hope never to use, but should understand before they are needed. The annual series once again provided an opportunity to learn, practice, ask questions, and build confidence in managing climbing emergencies while spending time with fellow club members.



Biking Little Red in Logan - Jun. 5-6, 2026

Reported by Dea Nelson

The Women of the Wasatch Mountain Club at Little Red Riding Hood in Logan

The real magic of the Little Red Riding Hood cycling event doesn't start at the morning chip-timing mat. It starts the night before. On a Friday evening, the Lewiston Fairgrounds transformed from a quiet northern Utah park into a buzzing basecamp of anticipation. Under the fading Cache Valley light, women representing the Wasatch Mountain Club gathered together to connect, swap stories, and talk strategy.

For a club with a rugged history stretching back to 1920, this was a different kind of camaraderie. Spreads of maps and route cards were laid out as the team—Debbie Olsen, Dea Nelson, Cheryl Krusko, Deanna Debella, Marti Mitchell, and Robin—synchronized their plans. Having ridden these roads for over ten years, Debbie knew every subtle incline, every notorious headwind stretch, and exactly how to pace a Cache Valley ride, so she shared some great tips.

Because Little Red is tailored to celebrate every level of rider, the WMC team was beautifully split. Friday night was our precious window to stand in a circle as one cohesive team, offer final words of encouragement, and laugh off the pre-ride jitters and take some pictures.

The Perfect Launch

When Saturday morning arrived, the fairgrounds erupted into life. The weather couldn't have been more magnificent if we had ordered it ourselves. Cyclists are always at the mercy of the elements, but June 6th, Cache Valley was on its best behavior. There was a temperate, refreshing coolness to the early morning air—just enough to make the first few miles crisp and clear—and, most importantly, the notorious northern Utah high winds were completely absent. The valley was perfectly still.



Deanna, Cheryl, Robin, Debbie and Dea



Morning delight

But it was the atmosphere that truly woke up the legs. It wasn't the tense, hyper-competitive silence of a traditional bicycle race; it was a loud, motivational symphony of empowerment. Armed with a good breakfast, high-octane tunes, a flawless weather window, and the backing of their tight-knit crew, Debbie, Cheryl, Deanna, Marti, Robin and myself, clipped into our pedals and rolled toward the start line, each one on our time slot, ready to conquer the valley together.



Cruising the Valley: Miles of Perfect Asphalt

As the staggered start times rolled out, all riders dispersed into the postcard-perfect expanse of Cache Valley. Under a brilliant, cloudless sky, the miles began to click away effortlessly. Without a headwind to fight, the women could lift their chin up from the handlebars, lock into a smooth, efficient cadence, and truly soak in the scenery.



The route unfolded in a vibrant tapestry of rural northern Utah. To the east, the sharp, dramatic escarpments of the Bear River Range stood like a wall of deep green and granite, still holding patches of winter snow in the highest chutes. Below the peaks, the valley floor was a lush, rolling quilt of vibrant alfalfa fields, historic wood-plank barns, and quiet country lanes.

Every dozen miles or so, the legendary Little Red rest stops provided a welcome oasis. Far from the basic water-and-banana stations of typical charity rides, these stops were full-blown festivals. We rolled into vibrant hubs packed with enthusiastic volunteers, high-energy snacks, and creative theme decorations (pirates was this year's theme). They refueled on an abundance of snacks and energy drinks, swapping quick progress reports with other riders in the sea of red and pink.

Pedaling with Purpose: The Noble Heart of Little Red

Little Red ride is famously scenic, but the deeper beauty of the event lies in the unspoken bonds formed between the riders. While cruising along a quiet, sun-drenched stretch of asphalt between farm fields, the conversations on the road put the whole day into perspective.

It transformed the day from a mere physical challenge into a deeply noble cause. When the legs began to tire after hours in the saddle, we didn't just dig into our physical reserves; we tapped into a collective emotional reservoir. We weren't just spinning our wheels through a beautiful valley—we were actively funding a future free of cancer, one revolution of the pedals at a time.

The Triumphant Return

By the time the last riders began filtering back into the Lewiston Fairgrounds, the calm morning had given way to a warm, golden afternoon. One by one, and group by group, we crossed the finish line to the sound of roaring cheers and ringing cowbells. The exhaustion in our muscles was instantly overshadowed by the sheer joy of achievement.

At the end of the day, we had conquered different distances and started at different hours, but we all finished with a shared pride. With a century of outdoor legacy at our backs and a noble cause in our hearts, the women of the Wasatch Mountain Club proved once again that the best views are the ones earned together, pedal stroke by pedal stroke.



Hike Mt Olympus Memorial for Shelley - Jun 07, 2026

Organized and reported by Steph Stamm

On Sunday, June 7, eighteen members and friends of the Wasatch Mountain Club gathered at the Mt. Olympus trailhead to honor the memory of fellow WMC member and accomplished mountaineer Shelley Johannesen.

Before the hike began, Shelley's partner, Dave, joined us to share well wishes and pose for a group photo. Although frostbite injuries sustained during the recent Makalu expedition prevented him from hiking with us, it meant a great deal to have him there to see us off. We also unveiled a commemorative banner featuring Shelley, which accompanied us throughout the day.



The weather seemed to cooperate for the occasion. Despite the June forecast, cloud cover and temperatures in the mid-70s provided a welcome reprieve from the heat, making for pleasant hiking conditions on one of the Wasatch Front's most demanding trails.

The hike itself reflected the spirit in which it was organized: supportive, inclusive, and community-focused. Participants encouraged one another up the steep trail, and nearly everyone who started the hike successfully reached the summit. For many, the accomplishment felt especially meaningful knowing that Mt. Olympus had been the last training hike Shelley and Dave completed together before departing for their Himalayan expedition.

At the summit, we gathered for photos and took time to reflect on Shelley's adventurous spirit, strength, and love of the mountains. We placed the commemorative banner in the summit register box along with a fresh summit log, filling its first pages with memories, gratitude, and messages in Shelley's honor.

While the day was marked by loss, it was also a celebration of the community Shelley helped build and the inspiration she provided to so many climbers and adventurers. Reaching the summit together felt like a fitting tribute to a remarkable mountaineer whose impact will continue to be felt on trails and peaks throughout the Wasatch and beyond.



Mountaineering Ishinca Valley, Peru - May 18-June 3, 2026

Organized by SEIT and reported by Nathan C.

Although this wasn't an "official" calendar event, I wanted to share this because the WMC made it come together. Two avid club mountaineers, David Baumann and I, spent a few weeks in the Cordillera Blanca of Peru with Josh Beckner from the School for International Expedition Training (SIET). David pitched the idea in 2025 – a combined expedition and class in mountain leadership. In contrast to simply being guided up a mountain, or just taking a skills class, this trip was about developing skills in technical alpinism and "graduating" into leading the objectives ourselves.

Our trip and acclimatization kicked off at 10k feet in the town of Huaraz, where we hit the climbing wall right away. Between fun laps, we drilled crevasse self-rescue (to a <1 min transition!) and honed our movement skills on overhanging 5.10 rock. We'd continue this work another day at Hatun Machay, a crag of pumpy and sandbagged 10's and 11's. Josh's excellent coaching on moving shoulders, hips, and center of gravity felt like unlocking a cheat code for this "very square, obvious trad climber." In town, we went "behind the scenes" of an expedition. Negotiating rides, planning and purchasing rations, scheduling arrieros, navigating permit bureaucracy. In contrast to guided packages where such things are taken care of, logistics are essential for the self-sufficient climber. Atop this, we had ourselves to manage hydration, self-care, and avoiding illness were key priorities.

When it was time for the field, we met our arrieros and camp chef, Cirillo, for the two-hour hike into Ishinca Valley base camp.



David learning to climb steep!

Morning alpenglow on the Huandoyes



Immersed in the beauty of the Blanca, we began to understand what “big” terrain really was – waterfalls cascading thousands of feet, towering granite spires, and a scale that messes with your senses. “It’s called mountain-near-ing because it always feels like you’re just nearing the mountain!” Josh joked with us.

In that same vein, our acclimatation continued at 14k feet. A short rock wall at camp doubled as a venue for an impromptu footwork clinic, and also where we’d learn modern skills like the drop-loop 6:1 for crevasse rescue. Trouble would soon come, however, when a thunderous roar across the valley disturbed our morning dose of ham, eggs, and risk management. Tocllaraju, our 6000m objective, had let loose a massive D4 avalanche across its Western face. An ominous sign, but we remained hopeful it was a one-off...



Seracs fall on Tocllaraju's W. Face



David preparing for his push to Ishinca summit



Nathan belays the ~60° Yanapacca headwall





Atop Ishinca we decided Josh was no longer needed



Some say he's still up there surviving on scraps of Cuy...



From Ishinca - Ranrapalca's beautiful (and burly) North Face

Soon after, we made for Ishinca high camp at 16k feet and got to work on the glacier honing our steps, rope team, hazard belay, and arrest. I even managed to sneak away for an ice bouldering session before darkness set upon us. 3AM came early, but Ishinca was waiting for us, and we'd soon gain the 18k foot summit via the Northwest Slopes – David and I sharing leads and each getting at least a pitch of the steep stuff. The mellow walk down the Southwest ridge offered a cherry on top: Ranrapalca's glorious North aspects on full display. Some say he's still up there, surviving on scraps of Cuy...



Atop Ishinca, we decided Josh was no longer needed. Back at base camp, we'd found the one-off avalanche on Tocllaraju was now an almost hourly affair, with parties across the valley pulling out. We made the same choice and prepared a tactical retreat. We spent our last days in the Ishinca Valley sport climbing, scarfing the best food Cirillo could cook with our remaining rations (hint: it's the pizza!) and running the AMGA Rock Rescue Drill on our beloved practice boulder. In town – a quick regroup had us aiming further North for a technical ascent of Yanapacca, just shy of 18k feet.



Gringo Sherpa returns from high camp



David learns the AMGA rock rescue drill

A four-hour car ride up the switch-backiest road on earth dropped us off in the rain at 16k feet. After a short walk to camp, the clouds fortunately broke enough to get on the glacier. We practiced ice anchoring, climbed into (and out of) crevasses, and pushed our limits with steep French technique. After a good night's rest, it was full speed up Yanapacca's West Face. A tricky double-crevasse presented a

technical challenge, but the crux was the imposingly steep headwall. Josh gave me the nod, and I fired it in two long pitches. David took lead on the corniced summit, and we boogied back down, leaving our pickets for the rappels. Even as an experienced climber and mountaineer, this trip was as humbling as it was educational. I would highly recommend it to the club's aspiring alpinists, and especially those wanting to take a leadership role for themselves or for others in technical mountain endeavors. More information about the Ishinca Valley Expedition Course can be found on the SIET website: expeditiontraining.org.



Mastering :pied a Plat" or French Flat Footing on steep ice



Activity Calendar

Organizers can opt for a group size they are comfortable with, except for the group size limit of 10 in wilderness areas.

Jul 1 Wed	Trek- Napali Coast, Kalalau Trail, Kauai, Hi. July Preplanning Meeting <i>Meet:</i> Register with the Organizer <i>Organizer:</i> Anja Wadman anjawadman@gmail.com Trek- Napali Coast on the Kalalau Trail, Kauai, Hawaii. June Organization planning to obtain permits Location Kauai, Hawaii 11 miles one way Kalalau Trail on the Napali Coast October 7, 8, 9, 2026 Beach camping for 2 nights There is a waterfall for the water source and outhouses. Permits open up 90 days in advance. Cost is \$35 per person/per night Additional costs of traveling to Kauai, food, rental gear, and rental vehicle. See event listing on website for more details.
Jul 1 Wed	Trail Running - Butler Fork Trailhead – 6.0 mi Loop – 2000’ ascent – Fast pace <i>Meet:</i> 6:30 pm at Butler Fork Trailhead (9155 E Big Cottonwood Cyn Rd, Brighton, UT) <i>Organizer:</i> Kerry Regan 954-895-8627 kerryregan@gmail.com Trail running season is here! This will be a no drop run, no runner is left behind. All levels of fitness are welcome. It’s a great run for anyone who is looking for running partners or is new to trail running. Let me know if you want to join this run or others in the future. Message me if you want to arrange carpool.
Jul 1 Wed	Rock Climb - Climb Like A Girl @ Ambush Wall <i>Meet:</i> 5:45 pm at Drive up the canyon 5.7 miles from the flashing sign. There is a pull out on the North Side of the road. There is an orange sign with “7.8” in black at the pull out. This sign is for “mile marker” 7.8 as it is only a little ways before mile marker 8. <i>Carpool:</i> 5:30 pm at Big Cottonwood Canyon P&R (3865 Big Cottonwood Cyn Rd, Cottonwood Heights, UT) <i>Organizer:</i> Steph Stamm 973-945-3755 steph.m.stamm@gmail.com We’ll head to Ambush Wall where there’s primarily sport climbing in a very pretty setting with an easy approach. Bring your harness, helmet, locking carabiner or two and belay device (assisted braking device preferred but not required). The club will provide ropes and anchor kits. Email me to register . If I haven’t climbed with you before, please include a note about your climbing experience. ----- Join us for Climb Like a Girl, a welcoming Ladies Night with the Wasatch Mountain Club! This casual meetup is all about building community, sharing beta, and having fun climbing together. This event is inclusive and supportive of all female-identifying climbers. Whether you’re brand new to climbing or a seasoned crusher, this is a relaxed, supportive environment to build skills, meet partners, and share some stoke.
Jul 2 Thu	Early Morning Rock Climb: Momentum Millcreek – ntđ <i>Meet:</i> 6:00 am at Momentum Indoor Climbing Millcreek (3173 E 3300 S, Salt Lake City, UT) <i>Organizer:</i> Akiko Kamimura kamimura@umich.edu I will be at Momentum Indoor Climbing Millcreek approximately from 6 am to 7:30 am. You are welcome to join me. There aren’t many people there early morning. So it should be easy to find me. *I have three free day passes in addition to a buddy pass per month. Please let me know if you want to use it.
Jul 3 Fri	Day Hike - Ant Knoll & Peak 9792 Via Midway – mod+ – Moderate pace <i>Meet:</i> Register with the Organizer <i>Organizer:</i> Akiko Kamimura kamimura@umich.edu I have hiked to Ant Knoll (9,883 ft) via the Brighton side. I want to make the summit from the Midway side this time. We will also bag Peak 9792 too. The distance and elevation will depend on which route we will take and how far we could drive on the forest road. Please bring 10 Essentials. Please email before Thursday, 6 pm, July 2, for the meeting place and time. Registration is required. Registration priority will be given to WMC members. Registrants will receive more detailed info. Limit 8.
Jul 3 Fri	Day Hike-Bridger Peak, Rich County Utah – mod – 1.3 mi Out & Back – 918’ ascent – Moderate pace <i>Meet:</i> 9:00 am at Date and time to be confirmed as the season gets closer. email if interested. Logan Canyon- Swan Loop Drive. <i>Organizer:</i> Anja Wadman anjawadman@gmail.com GOAT Challenge. Hike all Utah’s highest peaks in every county. Hiking Bridger Peak, Rich County High Point. Bridger Peak is 9,225 ft. It was Unnamed Peak until 1999 when the SLC Tribune ran a contest for someone to name it. It won for the earlier explorer Jim Bridger. Distance is 1.3 miles to summit. Elevation gain is 918 ft Time is 1 to 2 hours Dog Friendly. Yes, off leash. Kid friendly? Not recommended. Steepness and off-trail hiking.
Jul 3 Fri – Jul 6 Mon	Mountaineering - Granite Peak, Montana <i>Meet:</i> Register with the Organizer <i>Organizer:</i> Nathan C 307-371-6356 nac787.home@gmail.com This is an alpine climbing trip to Montana’s state highpoint - Granite Peak - nestled deep in the Absaroka-Beartooth Wilderness. This is considered one of the most difficult state highpoints to bag in the Lower 48, largely due to it’s remote nature, potential technicalities en-route, and highly variable weather. We will be approaching Granite Peak from the South, via. an off-trail route around Aero Lakes. This is an exceptionally scenic hike in itself, but also quite demanding, as much of it is off trail with mandatory river crossings. After 14-ish miles we will make camp at Sky Top Lake, set below the Villard Spires and just in view of the S. Face of Granite. The Southwest Ramp is the standard route from here. In prime conditions this is a 3rd class scramble, but in July you can expect moderate angle snow, patches of ice, and an abundance of loose rock. Technical mountain gear will be required. We will budget an extra summit day for contingency and spend a day to hike out via. Sky Top Drainage. (3+1 days total) This trip will be limited to 6 climbers on the SW Ramp. Organizer has climbed this route before. This is not a guided activity and climbers are expected to be self-sufficient in technical mountain terrain. Additional backpackers will be allowed to join up to Sky Top Lake. Inquire with the organizer if interested, to include a summary of recent mountain experience.
Jul 3 Fri – Jul 5 Sun	Backpacking & Peakbagging - Cleveland, Kweeyahgut, And Explorer Peaks - Uintas – msd – 35.0 mi Out & Back – 7000’ ascent – Moderate pace <i>Meet:</i> Register with the Organizer <i>Organizer:</i> Reid Gardner 801-718-1746 reid.gard.97@gmail.com Join me for a weekend backpacking adventure to some of the more remote peaks in the Uintas! We’ll set up a basecamp near Kyhv Lake, and those who are up for it can also join me to bag the following peaks: Cleveland (12,584’), Kweeyahgut (12,855’), and Explorer (12,708’). I haven’t been to this area before, so this will be exploratory. If you’d rather skip the summits, you’re welcome to come and spend Saturday relaxing at camp or exploring the area. See event listing on website for more details.
Jul 3 Fri	Road Bike- Emigration Canyon – mod – 15.0 mi Out & Back – 1500’ ascent – Moderate pace <i>Meet:</i> 9:00 am at Rotary Glen Park (2850 Emigration Canyon Rd, Salt Lake City, UT) <i>Organizer:</i> Cheryl Krusko 801-474-3759 ckrusko@gmail.com Plan to meet at the Rotary Park at the mouth of Emigration Canyon to ride up to Little Mountain. Depending on energy, we may continue to the Little Dell Reservoir. Bring your climbing legs and a snack!!



Jul 4 Sat	Hike And Scramble, Mount Sneffels 14er – mod+ – 7.0 mi Loop – 3335' ascent – Moderate pace <i>Meet:</i> Register with the Organizer <i>Organizer:</i> Jose Pacheco 314-910-8731 jpachecowashu30@gmail.com will be ascending via southwest ridge and descending via standard route. helmet is recommended but no required. appropriate scrambling shoes and 10 essentials required. https://www.14ers.com/route.php?route=snef2 https://www.14ers.com/route.php?route=snef1
Jul 5 Sun	Day Hike - Mt. Jardine, Logan – msd- – Moderate pace <i>Meet:</i> Register with the Organizer <i>Organizer:</i> Akiko Kamimura kamimura@umich.edu This is our third attempt to Mt Jardine (9,565 ft) in Logan. By now we believe that we now the best route to make this peak. The standard route involves 10.3 miles RT with 4,000 ft gain. However, we plan to take the class 2 route to avoid class 4-5 scrambles. The class 2 route has shorter distance than the standard route. Please bring 10 essentials including plenty of water. Please email before July 3 Friday, 6 pm, for the meeting place and time. Registration is required. Registration priority will be given to WMC members. Registrants will receive more detailed info.
Jul 7 Tue	Early Morning Rock Climb: Momentum Millcreek – ntd <i>Meet:</i> 6:00 am at Momentum Indoor Climbing Millcreek (3173 E 3300 S, Salt Lake City, UT) <i>Organizer:</i> Akiko Kamimura kamimura@umich.edu I will be at Momentum Indoor Climbing Millcreek approximately from 6 am to 7:30 am. You are welcome to join me. There aren't many people there early morning. So it should be easy to find me. *I have three free day passes in addition to a buddy pass per month. Please let me know if you want to use it.
Jul 7 Tue	Mountain Bike Park City – mod – 15.0 mi Loop – 1500' ascent – Moderate pace <i>Meet:</i> 6:00 pm at TBD by Organizer <i>Organizer:</i> Organizer 801-111-2222 Organizer@gmail.com The weekly Tuesday night Mountain Bike ride will meet at varying trailheads, riding trails per the organizers' discretion. We offer rides for all skill levels so come on out and ride with us. An email with the specific meeting time, location and ride description will be sent to the wmc-bike list on Monday the day before the ride. To get on the wmc-bike email list you must be a WMC member, then: Go to 'MEMBER', click on 'Email List Subscribe', and then add yourself to the 'Bike' email list. See you Tuesday !! Let's Roll !!
Jul 7 Tue	Rock Climb - Trad Tuesday @ Storm Mountain Island <i>Meet:</i> 5:30 pm at Mule Hollow trail head in BCC. Just after the sharp curves through the cliffs after Storm Mountain Picnic Area is a parking lot on the left, after the creek. Rough rocky road to parking. <i>Organizer:</i> Paul Gettings 801-599-7311 p.gettings@gmail.com BCC quartzite climbing, with a preference for traditional protection. Lots of options in the Storm Mountain Island area from 5.4 to 5.11+. Helmets required, and we will park at Mule Hollow trailhead to make the approach a little safer - no road crossings. At the parking lot we will split into teams for various crags around the Storm Mountain Picnic Area/Island region. All skill levels welcome.
Jul 8 Wed	WMC Monthly Board Meeting <i>Meet:</i> 7:00 pm at See the Agenda link below for Zoom details, or attend in person at the WMC Office (1390 S 1100 E, Salt Lake City, UT) <i>Carpool:</i> 5:40 pm at Pre meeting appetizers at Fiddler's (1059 E 2100 S, Salt Lake City, UT) <i>Organizer:</i> Dave Ashley secretary@wasatchmountainclub.org Members are welcome to attend. Members wishing to bring topics to the Board's attention should email the President and Secretary no later than 7 days prior to the meeting. See the link below to access the Board Meeting Agenda. Note you must be signed into the WMC website to access the Agenda.
Jul 8 Wed	Trail Running - Butler Fork Trailhead – 6.0 mi Loop – 2000' ascent – Fast pace <i>Meet:</i> 6:30 pm at Butler Fork Trailhead (9155 E Big Cottonwood Cyn Rd, Brighton, UT) <i>Organizer:</i> Kerry Regan 954-895-8627 kerrylregan@gmail.com Trail running season is here! This will be a no drop run, no runner is left behind. All levels of fitness are welcome. It's a great run for anyone who is looking for running partners or is new to trail running. Let me know if you want to join this run or others in the future. Message me if you want to arrange carpool.
Jul 9 Thu – Jul 12 Sun	Rock Climb - 33rd Annual International Climbers' Festival - Lander, WY <i>Meet:</i> 8:00 am at Attend what you can! Just let us know your plans. Everything will be in or around Lander, WY <i>Organizer:</i> Nathan C 307-371-6356 nac787.home@gmail.com Join us for the 33rd installment of the International Climbers' Festival (ICF) in Lander, WY! This is the longest running climbing festival in the country, and we'd be stoked if you could join us here to celebrate climbing culture and community. Each day the festival will host a variety of events, with something for everyone, and the climbing around Lander has a lot to offer - from heady clips in Sinks Canyon, pulling pockets at Wild Iris, to adventure trad in Sweetwater Rocks Festival tickets will soon be available for purchase and should be published with the festival schedule, clinic offerings, etc... but for now we're adding a calendar event so you can start planning. This is largely a "show and go" event - join for what you can (we hope all of it!) - but definitely let us know you'll be there!
Jul 9 Thu	Early Morning Rock Climb: Momentum Millcreek – ntd <i>Meet:</i> 6:00 am at Momentum Indoor Climbing Millcreek (3173 E 3300 S, Salt Lake City, UT) <i>Organizer:</i> Akiko Kamimura kamimura@umich.edu I will be at Momentum Indoor Climbing Millcreek approximately from 6 am to 7:30 am. You are welcome to join me. There aren't many people there early morning. So it should be easy to find me. *I have three free day passes in addition to a buddy pass per month. Please let me know if you want to use it.
Jul 9 Thu – Jul 12 Sun	Trail Running - Running In The Winds From Lander <i>Meet:</i> 8:00 am at Attend what you can! Just let us know your plans. Everything will be in or around Lander, WY <i>Organizer:</i> Kerry Regan 954-895-8627 kerrylregan@gmail.com The Wind River Range offers some of the best trail running in the world. Come join for some fantastic running from Lander, WY. This is during the Climb Festival, so we will also have time to hang with club members attending. Run some, climb some, or run it all! Let me know if you are interested. Routes will vary in distance. Let me know if you are interested in joining or if you have any questions.
Jul 10 Fri – Jul 12 Sun	White Water Rafting - Flaming Gorge - Class II-III <i>Meet:</i> Register with the Organizer <i>Organizer:</i> Liam O'Malley 201-815-6782 liamomalley1998@gmail.com Come join us for a weekend floating the Green River below Flaming Gorge! The plan is to meet at camp Friday evening or as an optional add-on, leave Friday morning, and do the Ashley Gorge Via Ferrata on the way. Saturday, we will run section A of the river, which is about 7 miles. We'll be able to drive our own shuttle and can do multiple runs if time and interest permit. On Sunday, we will run section B of the river, which is about 9 miles. The takeout is about an hour from the put-in, so I'm planning to hire a shuttle service to transport the needed cars (~\$100/car before tax and tip). We'll coordinate the most efficient way to shuttle each day and carpool for the weekend once we have a headcount. Campground space may be limited, and we want to ensure we have a good ratio of experienced to newer boaters. Please sign up by texting me below and letting me know your whitewater experience. Due to these things, spots are not guaranteed. Sign up as soon as you can. See event listing on website for more details.



Jul 10 Fri - Jul 12 Sun	<p>Car Camp- Hiking The Highest Peaks In Sanpete, Carbon, And Emery County – mod – 12.0 mi Out & Back – Moderate pace Meet: Register with the Organizer Organizer: Anja Wadman anjawadman@gmail.com Come join the GOAT challenges. It is to hike to the highest point in every county starting in 2026 and finishing up by December 2027. Look for previous posts for other peaks. Camp in Sanpete and hit South Tent Mountain and North Tent Mountain (5 miles round trip). Drive to Emery County. Camp and the next morning hike East Benchmark (6 miles round trip). Hopefully, the wildflowers will be out. Then drive to Carbon County and hike Monument Peak (1 mile round trip) and head home. Dates TBF. Watching wildflower season, fires, and weather before firming up the dates and logistics. Please email if interested. Utah County High Points 1.DuchesneKings Peak 2.SummitGilbert Peak 3.San JuanMount Peale 4.GrandMount Waas 5.DaggettEccentric Benchmark 5.UintahEccentric Benchmark 7.BeaverDelano Peak 7.PiuteDelano Peak 9.Juablbapah Peak 10.UtahMount Nebo 11.SevierFish Lake Hightop 12.GarfieldMount Ellen 13.Salt LakeAmerican Fork Twin Peaks 14.WayneBluebell Knoll 15.IronBrian Head 16.SanpeteSouth Tent Mountain 17.TooeleDeseret Peak 18.WasatchMurdock Mountain - West Slope 19.EmeryEast Benchmark 20.CarbonMonument Peak 21.WashingtonSignal Peak 22.MillardMine Camp Peak 23.KaneKane County High Point 24.CacheNaomi Peak 25.Box ElderBull Mountain 26.WeberWillard Peak 27.DavisThurston Peak 27.MorganThurston Peak 29.RichBridger Peak</p>
Jul 10 Fri	<p>Road Bike- Emigration Canyon – mod – 15.0 mi Out & Back – 1500’ ascent – Moderate pace Meet: 9:00 am at Rotary Glen Park (2850 Emigration Canyon Rd, Salt Lake City, UT) Organizer: Cheryl Krusko 801-474-3759 ckrusko@gmail.com Plan to meet at the Rotary Park at the mouth of Emigration Canyon to ride up to Little Mountain. Depending on energy, we may continue to the Little Dell Reservoir. Bring your climbing legs and a snack!!</p>
Jul 11 Sat	<p>Day Hike - Peak 8507 Via Big Mt. Pass – mod+ – Moderate pace Meet: Register with the Organizer Organizer: Akiko Kamimura kamimura@umich.edu We will hike to Peak 8507 via Big Mt Pass. I am very familiar with the trail and the area but have not been to the peak. There is a trail all the way, except the last very short section to the summit. The distance is relatively long (approximately 11 miles RT) but it's not steep. Please bring 10 essentials. Please email before July 10 Friday, 6 pm, for the meeting place and time. Registration is required. Registration priority will be given to WMC members. Registrants will receive more detailed info.</p>
Jul 11 Sat	<p>Day Hike: Wasatch Wildflower Festival (Brighton) Meet: Register with the Organizer Organizer: Robert* Turner 801-560-3378 r46turner@gmail.com Our friends at the Cottonwood Canyons Foundation are excited to invite you to join them for the annual Wasatch Wildflower Festival. The Festival is a multi-day event hosted at the four Cottonwood Canyons ski areas: July 11 at Brighton, July 12 at Solitude, July 18 at Snowbird, and July 19 at Alta. Guided walks and activities will be offered at each resort. The festival is free of charge, but registration is required. Follow the link below to the CCF website to register and get information about the meeting locations and times, types of hikes offered and other details. (No need to contact me; just register with CCF.)</p>
Jul 12 Sun	<p>Hike - Mt. Nebo – mod+ – 9.3 mi – 3589’ ascent – Moderate pace Meet: Register with the Organizer Organizer: Akiko Kamimura kamimura@umich.edu Mt Nebo (11,928 ft) is the highest peak in the Wasatch Range. This is a very scenic hike. There is a trail all the way to the peak. But the trail has sections with loose rocks. Please bring 10Es and microspikes. Please email before Friday 6 pm, July 10, for the meeting place and time. Registration is required. Registration priority will be given to WMC members. Registrants will receive more detailed info. To register, please email the organizer. Limit 8.</p>
Jul 12 Sun	<p>Training - Intro To Trad Placements Meet: 8:30 am at Brighton parking lot. We will be hiking up to the Twin Lakes side of Lake Mary. Organizer: Paul Gettings 801-599-7311 p.gettings@gmail.com This workshop will focus on how to use traditional climbing protection. How to inspect and place traditional, clean, pieces such as cams, nuts, tri-cams, etc. We will be covering how to place individual pieces, and build multi-piece trad anchors. We will be doing this on low-angle terrain, but may jump on anchors to test them. Expect a 4-6 hour workshop, and bring good footwear for the day. Helmets required, and bring your harness and gear. Trad racks will be available to borrow, if needed. There is a \$15 suggested donation for each workshop, that goes entirely to the rope fund to purchase club ropes and anchor kits.</p>
Jul 12 Sun	<p>Day Hike: Wasatch Wildflower Festival (Solitude) Meet: Register with the Organizer Organizer: Robert* Turner 801-560-3378 r46turner@gmail.com Our friends at the Cottonwood Canyons Foundation are excited to invite you to join them for the annual Wasatch Wildflower Festival. The Festival is a multi-day event hosted at the four Cottonwood Canyons ski areas: July 11 at Brighton, July 12 at Solitude, July 18 at Snowbird, and July 19 at Alta. Guided walks and activities will be offered at each resort. The festival is free of charge, but registration is required. Follow the link below to the CCF website to register and get information about the meeting locations and times, types of hikes offered and other details. (No need to contact me; just register with CCF.)</p>
Jul 13 Mon	<p>Evening Hike Up Lamb's Canyon – mod – 3.5 mi Out & Back – 1500’ ascent – Moderate pace Meet: 5:45 pm at Lambs Canyon Exit off I-80 (2342 E Lambs Cyn, Park City, UT) Organizer: Julie Kilgore 801-244-3323 jk@wasatch-environmental.com Lamb's Canyon is a beautiful shady hike all the way to the saddle. It's not at all unusual to see moose along the way. Meet at the Lamb's Canyon exit on I-80 for carpooling to the trailhead.</p>
Jul 14 Tue	<p>Boating-Tubing The Ogden River – class II+ – 2.0 mi Meet: Register with the Organizer Organizer: Anja Wadman anjawadman@gmail.com We will tub Ogden River. Ogden River: Urban Section This section of the river is a fantastic stretch of river to get on when you don't have the time to travel. From Loren Farr Park in Ogden, UT, to the Crystal Wave behind Walmart on 20th street, this 1.5 mile section is great for tubing, fishing, and kayaking. Popular surf wave around Gramercy street bridge. Crystal Wave below Wall Avenue. Bring your own tubs and lifejackets. Wear sturdy shoes. This is a popular section for fishing and beware of fishhooks. You can rent tubs from WSU. Family, Dog, and Kid Friendly. July 14 at 4 PM.</p>
Jul 14 Tue	<p>Early Morning Rock Climb: Momentum Millcreek – ntd Meet: 6:00 am at Momentum Indoor Climbing Millcreek (3173 E 3300 S, Salt Lake City, UT) Organizer: Akiko Kamimura kamimura@umich.edu I will be at Momentum Indoor Climbing Millcreek approximately from 6 am to 7:30 am. You are welcome to join me. There aren't many people there early morning. So it should be easy to find me. *I have three free day passes in addition to a buddy pass per month. Please let me know if you want to use it.</p>
Jul 14 Tue	<p>Mountain Bike Park City – mod – 15.0 mi Loop – 1500’ ascent – Moderate pace Meet: 6:00 pm at TBD by Organizer Organizer: Ryan Cragun 801-558-3114 cragunr@gmail.com The weekly Tuesday night Mountain Bike ride will meet at varying trailheads, riding trails per the organizers' discretion. We offer rides for all skill levels so come on out and ride with us. An email with the specific meeting time, location and ride description will be sent to the wmc-bike list on Monday the day before the ride. To get on the wmc-bike email list you must be a WMC member, then: Go to 'MEMBER', click on 'Email List Subscribe', and then add yourself to the 'Bike' email list. See you Tuesday !! Let's Roll !!</p>



Jul 14 Tue	Rock Climb Ambush Wall – mod <i>Meet:</i> 5:30 pm at Up Big Cotton Canyon 5 miles and park on north side of road near trailhead. <i>Organizer:</i> Sharon Vinick 801-865-4614 outdoorsharon@yahoo.com Sport climb at a fun area w a short approach. 5.7 to 5.9. Helmets, belay knowledge and safety required.
Jul 14 Tue	Trail Running In Lamb's Canyon – 8.0 mi Out & Back – 3000' ascent <i>Meet:</i> 6:00 pm at Lamb's Canyon Trailhead <i>Organizer:</i> Kerry Regan 954-895-8627 kerrylregan@gmail.com We will be running the Lamb's Canyon trail to Elbow Fork and back. This trail run really packs a punch with 3000 feet of gain. Dogs are not allowed in Lamb's Canyon. Let me know if you are wanting to join.
Jul 15 Wed	Trail Running - Butler Fork Trailhead – 6.0 mi Loop – 2000' ascent – Fast pace <i>Meet:</i> 6:30 pm at Butler Fork Trailhead (9155 E Big Cottonwood Cyn Rd, Brighton, UT) <i>Organizer:</i> Kerry Regan 954-895-8627 kerrylregan@gmail.com Trail running season is here! This will be a no drop run, no runner is left behind. All levels of fitness are welcome. It's a great run for anyone who is looking for running partners or is new to trail running. Let me know if you want to join this run or others in the future. Message me if you want to arrange carpool.
Jul 16 Thu	Lets Go Paddling Locally!!! :) Paddle Provo River Dam To Vivian Park – class I <i>Meet:</i> 6:00 pm at Vivian Park (6828 S Fork Rd, Provo, UT) <i>Organizer:</i> Mara Green 385-695-0218 raftingmara@gmail.com Lets go paddling locally!!! :) Where: Provo River classic section - paddling from Dam to Vivian Park. When: Thursday July 16, 2026. 6PM - meet at Vivian Park Estimated Float time: +/- 2 hours Skill level: Class I - Easy, but NOT flat water. It may be a little stronger than Class I depending on release levels from the dam. Details: Bring your own kayak, paddle board, canoe, etc. State law requires life jackets - strongly encourage to have a whitewater approved life jacket for this section of river. Also strongly encourage anyone on a paddle board to have a quick release leash or use a rescue quick release rescue strap on your life jacket. Must wear shoes or strap on sandals. No flip flops or shoes that can fall off. If you bring water or snacks make sure it can be strapped to your water craft so it doesn't become litter. We will meet at Vivian Park and carpool up to the boat launch near the dam. The parking area at the put in is a State Park fee area. I think it's \$20 per vehicle or an annual state park pass works. We'll try to carpool to the top to cut down on parking fees. This is a bring your own equipment trip. If you need equipment, you can most likely rent it from the Wasatch Mountain Club. Contact Donnie or Bret who coordinate boating equipment. I'm excited to see you all and get out on the water this season. Let me know if you have questions. Let's go paddling! =)
Jul 16 Thu	Early Morning Rock Climb: Momentum Millcreek – ntđ <i>Meet:</i> 6:00 am at Momentum Indoor Climbing Millcreek (3173 E 3300 S, Salt Lake City, UT) <i>Organizer:</i> Akiko Kamimura kamimura@umich.edu I will be at Momentum Indoor Climbing Millcreek approximately from 6 am to 7:30 am. You are welcome to join me. There aren't many people there early morning. So it should be easy to find me. *I have three free day passes in addition to a buddy pass per month. Please let me know if you want to use it.
Jul 17 Fri – Jul 19 Sun	Do the Book! Teton Mountaineering - Grand/Middle & Garnet Canyon <i>Meet:</i> Register with the Organizer <i>Organizer:</i> Nathan C 307-371-6356 nac787.home@gmail.com **Permit capacity has been reached - please reach out for waitlist** This is an alpine climbing trip to Grand Teton National Park and climbs accessed via. Garnet Canyon. This is the standard approach for the Grand Teton and is also the point of access for Middle / South Teton, Irene's Arete, etc... This is a non-guided, exploratory activity that provides an area to "base camp" for the climb(s) of your choosing. Permits are secured for overnight backcountry camping at the Moraines and Meadows areas for Friday and Saturday night, which affords flexibility for varied objectives. Site assignment will be first-come first-serve. Interested participants will be asked to organize in small alpine teams of 2-3 and choose objectives in line with their team's experience and skillset. Specific route conditions and local weather are highly variable at this time of year - snow and ice are probable on several routes and should be factored into participant's planning. Organizer will drive up on Thursday and stay at the AAC Climber's Ranch for permit pickup and a relaxed start on Friday AM - highly recommended that others do the same. Please email the organizer to discuss experience and desired objectives as part of registration. Folks not wishing to camp (i.e. car-to-car) objectives in the area are welcome to coordinate with the organizer, but will not be considered trip participants.
Jul 17 Fri – Jul 19 Sun	Canyoneering-Paris Ice Caves Leadership Rally <i>Meet:</i> 6:00 pm at https://luma.com/117705he <i>Organizer:</i> Shane Wallace 801-400-6372 shaneswallace@gmail.com https://luma.com/117705he
Jul 17 Fri – Jul 19 Sun	Rock Climb, Ruth Lake – mod <i>Meet:</i> 10:00 am at Pullout for Ruth Lake trailhead, just before or at Mile Marker 35 on the Mirror Lake Highway. <i>Organizer:</i> Steven Duncan, Sharon Vinick 801-680-9236, 801-865-4614 wasatchclimber@gmail.com, outdoorsharon@yahoo.com Come for the day Saturday or stay for the weekend for some fun climbing on quality quartzite. We'll climb at Ruth Lake Chief Wall and Good Medicine Area Saturday. Sunday is open for Mosquito Wall, Cliff Lake or another area TBD. Meeting time listed is for Saturday. Sharon and I have a double campsite for Friday and Saturday nights at Sulphur campground a few miles past Ruth Lake and can accommodate a couple other tents there. More campsites may be available online.
Jul 18 Sat	Trek 2025 Mount Ogden Hiking Goat Challenge- Ogden Ut /Northern Utah Hikes – msd – 11.9 mi Out & Back – 4400' ascent – Moderate pace <i>Meet:</i> 8:00 am at Snowbasin. More details to come <i>Organizer:</i> Anja Wadman anjawadman@gmail.com Scramble, expect to probably use your hands a little bit. Plan for 7 -10 hr day. Let's hit 6 peaks in one day. No Name Peak, Allen Peak, Mount Ogden, Needles, Demoisy Peak and Strawberry Peak. The plan is to take the Snowbasin Gondola at 9 AM. Hike the ridge line. The cost of the gondola is \$29 per person. Until July 11 you can get 50% off the gondola tickets buy using PRIMEDAY. We will take the Ridge Trail, head south and hit Strawberry Peak, then route back and hit Demoisy Peak, Needles, Mt. Ogden, Allen Peak and if we are still interested a short 30 minute hike up to No Name Peak. From there we will hike back down the John Paul Trail to the vehicles. Don't think we will be able to catch the last Gondola. There is an option if people are interested in doing this a two day event and camping. Ride up the Gondola on Saturday. Camp outside the Ski resort boundary on USFS lands. And then ride the Gondola back to the vehicles Sunday. This is a loop. About 11.9 miles. Elevation Gain 4400 ft. More downhill than uphill. Estimate 7-10 hrs. High in beauty, not a lot of solitude, may have to do some route finding if the trails look a little too brushy especially around Demoisy Peak. Peaks on the Hike. elevation. Prominece 1.) Allen Peak. 9465. 145 2.) MT. Ogden. 9570. 3810 3.) Floyd Iverson Ridge. 9322. N/A 4.) The Needles. 9240. 80 5.) DeMoisy Peak. 9363. 363 6.) Strawberry Peak. 9265. 145 7.) No Name Peak. 9061. To be determined
Jul 18 Sat	Day Hike - Cherry Peak & Peak 9427, Logan – msd – 11.0 mi – 4677' ascent – Moderate pace <i>Meet:</i> Register with the Organizer <i>Organizer:</i> Akiko Kamimura kamimura@umich.edu We plan to bag Cherry Peak (9776 ft) and Peak 9427, north of Logan. I have not hiked to those peaks. There is a trail all the way to Cherry Peak. A short class 2 section between Cherry Peak and Peak 9427. Please bring 10 Essentials. If you do not live in the north of SLC, expect a long drive. Please email before Friday, 6 pm, July 17, for the meeting place and time. Registration is required. Registration priority will be given to WMC members. Registrants will receive more detailed info. Limit 8.



Jul 18 Sat	<p>Trail Maintenance With Save Our Canyons! <i>Meet:</i> 9:00 am at Timpanooke Trailhead, Timpooneke Rd, Provo, UT 84604 <i>Organizer:</i> Daisy DeMarco 610-517-7867 daisyanddemarco@gmail.com Let's join Save Our Canyons for a Timpanogos Trail Project! Help the Pleasant Grove Ranger District to maintain one of the busiest trails in the Provo area. Volunteers will help with garbage removal, brushback work, sign replacement, and more. Register with the organizer so I know you will be attending and maybe we can figure out carpooling as the date gets closer. Also, register at the link below. Looking forward to a fun and productive event!</p>
Jul 18 Sat	<p>Trail Running Lambs Canyon To Brighton – 22.0 mi Shuttle – 4500' ascent <i>Meet:</i> Register with the Organizer <i>Organizer:</i> Kerry Regan 954-895-8627 kerryregan@gmail.com Let's run the prettiest section of the Wasatch 100! We will start early to stage a car at Brighton and head to Lambs Canyon. This run gives fantastic views along the famous Wasatch Crest trail. We will see Dog Lake and Desolation Lake, follow the crest to Scott Hill and drop down to Brighton. Expect hard climbs interspersed with runnable terrain. Let me know if you have any questions!</p>
Jul 18 Sat	<p>Day Hike: Wasatch Wildflower Festival (Snowbird) <i>Meet:</i> Register with the Organizer <i>Organizer:</i> Robert* Turner 801-560-3378 r46turner@gmail.com Our friends at the Cottonwood Canyons Foundation are excited to invite you to join them for the annual Wasatch Wildflower Festival. The Festival is a multi-day event hosted at the four Cottonwood Canyons ski areas: July 11 at Brighton, July 12 at Solitude, July 18 at Snowbird, and July 19 at Alta. Guided walks and activities will be offered at each resort. The festival is free of charge, but registration is required. Follow the link below to the CCF website to register and get information about the meeting locations and times, types of hikes offered and other details. (No need to contact me; just register with CCF.)</p>
Jul 19 Sun	<p>Morning Hike - Alta – mod – Moderate pace <i>Meet:</i> Register with the Organizer <i>Organizer:</i> Akiko Kamimura kamimura@umich.edu We will enjoy wildflowers at Alta. We will start early to beat the crowd. Please bring 10 Essentials. Please email before Friday, 6 pm, July 17, for the meeting place and time. Registration is required. Registration priority will be given to WMC members. Registrants will receive more detailed info. Limit 8.</p>
Jul 19 Sun	<p>Day Hike: Wasatch Wildflower Festival (Alta) <i>Meet:</i> Register with the Organizer <i>Organizer:</i> Robert* Turner 801-560-3378 r46turner@gmail.com Our friends at the Cottonwood Canyons Foundation are excited to invite you to join them for the annual Wasatch Wildflower Festival. The Festival is a multi-day event hosted at the four Cottonwood Canyons ski areas: July 11 at Brighton, July 12 at Solitude, July 18 at Snowbird, and July 19 at Alta. Guided walks and activities will be offered at each resort. The festival is free of charge, but registration is required. Follow the link below to the CCF website to register and get information about the meeting locations and times, types of hikes offered and other details. (No need to contact me; just register with CCF.)</p>
Jul 21 Tue – Jul 23 Thu	<p>Hike & Car Camp/ Hotel - Mt. Blue Sky (1,4267 Ft) Via West Ridge, Colorado – msd – Moderate pace <i>Meet:</i> Register with the Organizer <i>Organizer:</i> Akiko Kamimura kamimura@umich.edu We plan to hike to Mt Blue Sky (1,4267 ft) via West Ridge from Gunella Pass - class 2, 9.25 miles RT with 3,100 ft gain. Due to a risk of rock falls, helmets are required. I have two extra helmets in case you want to borrow. The planned schedule is: July 21 Tue Road trip; July 22 Wed hike; July 23 Thu rest day for those who will continue the adventure, road trip for those who will go home. Due to a high possibility of afternoon thunderstorms in CO, we will start a hike very early. The hikes will be exploratory. We will stay at a developed campsite. If you prefer to stay at a hotel, Georgetown is the closest town. Those who will stay at a campsite, there will be small cost sharing. Individual shares will depend on how many people will camp. The main group will stay there from July 21 Tue to July 25 Sat (including road trip, hiking to Blue Sky, Grays & Torreys. Partial participation is fine. To register, please email the organizer. If you have never hiked with the organizer, please include your hiking and camping experience. Limit 8. WMC members only. For more details, please contact the organizer.</p>
Jul 21 Tue	<p>Mountain Bike Park City – mod – 15.0 mi Loop – 1500' ascent – Moderate pace <i>Meet:</i> 6:00 pm at TBD by Organizer <i>Organizer:</i> Organizer 801-111-1111 Organizer@gmail.com The weekly Tuesday night Mountain Bike ride will meet at varying trailheads, riding trails per the organizers' discretion. We offer rides for all skill levels so come on out and ride with us. An email with the specific meeting time, location and ride description will be sent to the wmc-bike list on Monday the day before the ride. To get on the wmc-bike email list you must be a WMC member, then: Go to 'MEMBER', click on 'Email List Subscribe', and then add yourself to the 'Bike' email list. See you Tuesday !! Let's Roll !!</p>
Jul 21 Tue	<p>Rock Climb - Trad Tuesday @ Lisa Falls <i>Meet:</i> 5:30 pm at Lisa Falls Trailhead (6405 Little Cottonwood Canyon Rd, Sandy, UT) <i>Organizer:</i> Paul Gettings 801-599-7311 p.gettings@gmail.com LCC granite climbing next to a nice little waterfall. Very short approach, with routes from 5.4 and up. Helmets required. Trad lines preferred, but plenty of fun sport also available. Shade is sparse, so prepare for sun; the waterfall keeps the temperature a bit lower.</p>
Jul 22 Wed	<p>Trail Running - Butler Fork Trailhead – 6.0 mi Loop – 2000' ascent – Fast pace <i>Meet:</i> 6:30 pm at Butler Fork Trailhead (9155 E Big Cottonwood Cyn Rd, Brighton, UT) <i>Organizer:</i> Kerry Regan 954-895-8627 kerryregan@gmail.com Trail running season is here! This will be a no drop run, no runner is left behind. All levels of fitness are welcome. It's a great run for anyone who is looking for running partners or is new to trail running. Let me know if you want to join this run or others in the future. Message me if you want to arrange carpool.</p>
Jul 23 Thu – Jul 25 Sat	<p>Hike & Car Camp/ Hotel - Grays (14,276 Ft) & Torreys (14,272 Ft), Colorado – msd – Moderate pace <i>Meet:</i> Register with the Organizer <i>Organizer:</i> Akiko Kamimura kamimura@umich.edu We plan to hike to Grays & Torreys - class 1, 8.25 miles RT with 3,600 ft gain. The planned schedule is: July 23 Thu rest day for those who will continue the adventure from Blue Sky, road trip for those who will come on the day; July 24 Fri hike; and July 25 Sat road trip to go home. Due to a high possibility of afternoon thunderstorms in CO, we will start a hike very early. The hikes will be exploratory. We will stay at a dispersed campsite (no fee). If you prefer to stay at a hotel, Georgetown is the closest town. The main group will stay there from July 21 Tue to July 25 Sat (including road trip, hiking to Blue Sky, Grays & Torreys. Partial participation is fine. To register, please email the organizer. If you have never hiked with the organizer, please include your hiking and camping experience. Limit 8. WMC members only. For more details, please contact the organizer.</p>
Jul 25 Sat	<p>Hike And Scramble The Beat Out – ext – 13.0 mi – 5200' ascent – Moderate pace <i>Meet:</i> Register with the Organizer <i>Organizer:</i> Jose Pacheco 314-910-8731 jpachecowashu30@gmail.com We will start at white pine trailhead and finish at bells canyon trailhead. We will summit Pfeifferhorn first and then proceed along ridge to south thunder. From south thunder we will do bonus scrambling and do the traverse to north thunder. This route will have exposed class 3/4 scrambling. Helmets are suggested but not required. Scrambling shoes and 10 essentials are required. This will be a very long day, we will start in dark with headlamps. There will be 7000 feet of descent to finish day so poles are highly encouraged. Participants - Jose Pacheco, Lubka,</p>



Jul 25 Sat	<p>Annual Oldtimers Social And Potluck At The Historic WMC Lodge Meet: 2:00 pm at Wasatch Mountain Lodge (8465 S Mary Lake Lane, Brighton, UT) Organizer: Giulia Roselli 801-604-6635 socialdirector@wasatchmountainclub.org Come one, come all...although we are celebrating us 'oldies' and Life Members of the WMC, everyone is welcome to attend our afternoon Social get-together at the historic WMC lodge at Brighton. Come early for a leisurely hike up to the Lady Lakes (Mary, Martha and Catherine) at a relaxed pace if you like. The Social gathering and Pot Luck will run from 2 to 5 PM. WMC will provide burgers and fixins. Bring a picnic dish to share, and your favorite beverages. No RSVP needed, just show up at the lodge at 11AM if you want to hike, or at 2PM for just the social gathering and shared dining. WE SUGGEST TO BRING A DISH TO SHARE. If you're new to the club, come and meet the legendary Life Members, and everyone, let's enjoy this activity at the Lodge, one of the two scheduled events there for the summer. Life members, if you need a ride to the lodge or assistance getting to it, please contact me and we'll try to get arrangements made for you. THERE MAY BE A PRESENTER, IF THERE IS SOMEONE SCHEDULED WE WILL UPDATE THIS EVENT</p>
Jul 25 Sat – Jul 26 Sun	<p>Training: Wilderness First Aid (WFA) Course With Solo At Weber State Meet: Register with the Organizer Organizer: Gail Coates 909-261-1681 coates.gail3@gmail.com In person Wilderness First Aid (WFA) Course with SOLO - July 25-26 at Weber State We're planning a Wilderness First Aid (WFA) course with SOLO Dates: July 25-26 (Saturday & Sunday) Location: Weber State University 1435 Village Dr., Dept 2801 Ogden, UT 84408 Sign Up: Please use the link below to reserve your spot. This lets us gauge interest and confirm the course once we reach the minimum number of participants. Sign Up for the WFA Course Cost: \$275 per person Organizer cost: \$137.50 for WMC members who organize 3 or more activities, after 50% reimbursement Capacity: ~16 participants This SOLO WFA course is a nationally recognized, hands-on introduction to wilderness medicine and part of the Wilderness Medicine Education Collaborative (a professional organization formed to develop a consensus-driven scope of practice documents and de facto standards for wilderness certifications). It's designed for hikers, climbers, bikers, and anyone spending time in the backcountry who wants to be better prepared when help is not immediately available. What you'll learn: Patient assessment and decision-making in remote settings Treatment of common backcountry injuries and illnesses Wound care, splinting, and stabilization techniques Managing environmental emergencies like hypothermia, heat illness, and altitude-related issues Improvisation and evacuation considerations when you're far from help The course emphasizes practical scenarios and real-world application so you leave with skills you can actually use. Payment details: Once we reach the minimum number of participants, we will confirm the course, collect payment, and officially register everyone.</p>
Jul 25 Sat	<p>Day Hike, Brighton Ridge Run – mod+ – 10.0 mi Loop – 4500' ascent – Fast pace Meet: 8:15 am at Wasatch Mountain Club Lodge Organizer: Brad* Yates 801-592-5814 bnyslc@gmail.com Brighton Ridge Run, Clayton to Millicent. We will not actually be running but rather hiking at a fast clip over the peaks above Brighton, leaving the hike at any point is always an option. We will start hiking from the lodge at 8:30 sharp in order to be down in time of the old timers party.</p>
Jul 25 Sat	<p>Pre - P A R T Y Hike - Silver Lake Nature Trail – ntd – 2.0 mi Meet: 12:00 pm at https://maps.app.goo.gl/13fh9xRz1Br3nmgz6 Organizer: Frank Bouchard 352-246-5304 fabouchard@gmail.com This will be a slow-paced easy hike on mostly flat terrain. We will meet in front of the Milly Chalet here. Then walk over to the lake, hike the boardwalk around the lake, then hike to the WMC lodge for the oldtimers party. Anybody is welcome, but this is aimed at the older members so we will be going at the pace of the slowest person and taking breaks. The goal is to hang out with old friends, not cover lots of miles.</p>
Jul 25 Sat	<p>Day Hike To Lake Solitude – ntd – 4.6 mi Out & Back – 1239' ascent – Slow pace Meet: 11:30 am at Brighton parking lot in front of the Milly Chalet Organizer: Mark* Jones 801-410-4163 kikermrj@aol.com Lake Solitude from Brighton. Join Life Member/Old Timer Mark Jones for the hike from Brighton, past Silver Lake, to Lake Solitude and return in time for the party at the Lodge. Meet in front of the Milly Chalet at 11:30</p>
Jul 25 Sat	<p>Centennial Book Launch Open House, Signing, And Social At The WMC Lodge Meet: 2:00 pm at Wasatch Mountain Lodge (8465 S Mary Lake Lane, Brighton, UT) Organizer: Julie Kilgore 801-244-3323 jk@wasatch-environmental.com It's been 7 years in the making, and now it's here: The 100-year history of the WMC, Faint Heart Never Climbed a Mountain! Swing by, meet the author, and get your signed copy. Books are available for a \$35 donation. All proceeds above printing costs will go towards the WMC endowment to support Westminster's Outdoor Program. If you placed a pre-order and can't make the event, shoot Julie an email and we'll arrange to get your book order to you.</p>
Jul 25 Sat	<p>Trail Running Volunteering! Women's Epic 10k Aid Station Meet: Register with the Organizer Organizer: Kerry Regan 954-895-8627 kerrylregan@gmail.com WMC was asked if we could staff an aid station at the Women's Epic 10K at Brighton. This will be for just a few hours but will be a very rewarding experience as we provide aid for runners doing a 6 mile loop. The race begins at 8 am, so we will need to be there early. Please email me with any questions or if you would like to join.</p>
Jul 25 Sat	<p>Pre-P A R T Y Trail Running At Brighton – 8.0 mi Loop – 2100' ascent Meet: 12:00 pm at https://maps.app.goo.gl/13fh9xRz1Br3nmgz6 Organizer: Kerry Regan 954-895-8627 kerrylregan@gmail.com Join me for a fun run around Brighton before the party at the Lodge! We will visit Silver Lake, Lake Solitude, Twin Lakes, Lake Mary, Lake Martha, and Lake Catherine! We will hike the ups and run the downhills and flats. After the run, we will go join the other club members at the lodge for some food and socializing!</p>
Jul 27 Mon – Jul 29 Wed	<p>Canyoneering-Pnw Intermediate Course: Desert To Pnw Canyoning Course Meet: Register with the Organizer Organizer: Brent McCormick 801-580-6647 bmccormi@comcast.net https://www.facebook.com/share/16pivZmH55/</p>
Jul 27 Mon	<p>Evening Hike To (Or Towards) Secret Lake – ntd+ – Out & Back – Moderate pace Meet: 5:30 pm at Little Cottonwood Canyon P&R (4385 Little Cottonwood Cyn Rd, Sandy, UT) Organizer: Julie Kilgore 801-244-3323 jk@wasatch-environmental.com We'll try to park in Albion basin, but Setting a good pace, we can start at Alta and make the lake in an hour or so.</p>
Jul 28 Tue	<p>Early Morning Rock Climb: Momentum Millcreek – ntd Meet: 6:00 am at Momentum Indoor Climbing Millcreek (3173 E 3300 S, Salt Lake City, UT) Organizer: Akiko Kamimura kamimura@umich.edu I will be at Momentum Indoor Climbing Millcreek approximately from 6 am to 7:30 am. You are welcome to join me. There aren't many people there early morning. So it should be easy to find me. *I have three free day passes in addition to a buddy pass per month. Please let me know if you want to use it.</p>



Jul 28 Tue	Mountain Bike Park City – mod – 15.0 mi Loop – 1500' ascent – Moderate pace <i>Meet:</i> 6:00 pm at TBD by Organizer <i>Organizer:</i> Organizer 801-111-1111 Organizer@gmail.com The weekly Tuesday night Mountain Bike ride will meet at varying trailheads, riding trails per the organizers' discretion. We offer rides for all skill levels so come on out and ride with us. An email with the specific meeting time, location and ride description will be sent to the wmc-bike list on Monday the day before the ride. To get on the wmc-bike email list you must be a WMC member, then: Go to 'MEMBER', click on 'Email List Subscribe', and then add yourself to the 'Bike' email list. See you Tuesday !! Let's Roll !!
Jul 28 Tue	Rock Climb - Trad Tuesday @ Ferguson Canyon <i>Meet:</i> 5:30 pm at Ferguson Canyon trail head. Parking at the trail head is often full; overflow parking is in the park on the way in. Carpooling from the park could be helpful. <i>Organizer:</i> Paul Gettings 801-599-7311 p.gettings@gmail.com LCC granite climbing, but not in LCC. Meet at the trailhead parking; most of us may have to park at the bottom of the hill and walk up. Trad lines from 5.6 and up. Shady base, so good for the hot part of the year. Dogs welcome in the canyon. The stream will probably be dry at the surface, however. Helmets required. All skill levels welcome.
Jul 29 Wed	Trail Running - Butler Fork Trailhead – 6.0 mi Loop – 2000' ascent – Fast pace <i>Meet:</i> 6:30 pm at Butler Fork Trailhead (9155 E Big Cottonwood Cyn Rd, Brighton, UT) <i>Organizer:</i> Kerry Regan 954-895-8627 kerryregan@gmail.com Trail running season is here! This will be a no drop run, no runner is left behind. All levels of fitness are welcome. It's a great run for anyone who is looking for running partners or is new to trail running. Let me know if you want to join this run or others in the future. Message me if you want to arrange carpool.
Jul 30 Thu	Early Morning Rock Climb: Momentum Millcreek – ntd <i>Meet:</i> 6:00 am at Momentum Indoor Climbing Millcreek (3173 E 3300 S, Salt Lake City, UT) <i>Organizer:</i> Akiko Kamimura kamimura@umich.edu I will be at Momentum Indoor Climbing Millcreek approximately from 6 am to 7:30 am. You are welcome to join me. There aren't many people there early morning. So it should be easy to find me. *I have three free day passes in addition to a buddy pass per month. Please let me know if you want to use it.
Jul 31 Fri – Aug 2 Sun	Car Camp Hike Willard Peak & Ben Lomond Peak Via Willard Basin – mod+ – 7.6 mi Out & Back – 1500' ascent – Moderate pace <i>Meet:</i> 8:00 pm at To be determined. Contact for more information. <i>Organizer:</i> Anja Wadman anjawadman@gmail.com GOAT challenge hike Willard Peak is the highest point for Weber County, though it sees less than half the amount of hikers compared to the popular Ben Lomond Peak. Driving up the back route to Willard Peak. 45 minutes on dirt road. The dirt road does need 4x4 and maybe high clearance vehicles. We will camp around Willard Peak on USFS lands. This is a popular dirt road for ATVs and don't plan for solitude camping. Camp Friday night and get up early to start hiking Saturday morning. We have the option of camping again Saturday night and then head down Sunday. Or leave Saturday. 5 hrs. 7.6 miles round trip Elevation gain 1,500 ft. Dogs are welcomed
Aug 7 Fri – Aug 9 Sun	White Water Rafting/Alpine Canyon/Snake River/Wyoming – class III – 8.0 mi – 100' ascent <i>Meet:</i> Register with the Organizer <i>Organizer:</i> Marcia Andriano-Pilz, Joergen Pilz 801-864-6641, 801-232-3315 partner2@comcast.net, joergen1@comcast.net Whitewater rafting in Alpine Canyon and a Scenic Float in GTNP. This trip focuses on improving paddler skills for those who go on the Moab Daily beginners weekend or have previous experience on at least a Class II River. Priority will be given to those wanting to take the next step to improve their skills and those patient captains willing to mentor. I have reserved two campgrounds at North Alpine Loop. Could not get the group campground site. There are six FF campgrounds available. My husband and I will leave early and reserve the necessary FF campsites. Camping fees will vary depending on situation. We will use a mix of personal and club gear. Please arrange for your own food, drinks and eating utensils, etc. Saturday night we will have a potluck dinner. I will provide both a traditional and healthy version of my Italian great grandmother's lasagna recipe. Trip is limited to 12 people. Only a few spots left. Contact me ASAP to reserve your spot. We will have a coordinating meeting two weeks before the trip. Hopefully, folks can carpool and help haul gear. More details to come via emails after you sign up for trip. Of course, trip depends on adequate CFS flow.
Aug 13 Thu – Aug 16 Sun	Rock Climb - Tetons // Grand In A Day – 17.0 mi – 7000' ascent <i>Meet:</i> Register with the Organizer <i>Organizer:</i> Nathan C 307-371-6356 nac787.home@gmail.com Join us for our Second Annual "Grand In A Day" push! The July trip up Garnet Canyon filled up fast, so here's your chance to have an even bigger, burlier day taking on the iconic Grand Teton. We've booked a cabin for three nights at the AAC Climber's Ranch, within Grand Teton National Park. Participants will need to arrive early evening on August 13th. We will choose our summit day (Friday or Saturday) based on how the weather is looking. Ascent plan is an early start from Lupine Meadows (~3AM), summit via. Owen Spalding or Upper Exum, and be back down in time for a celebratory slice or three at Pinky G's. Other days in the park are anything goes - climbing, lounging, trail running, etc... If this interests you, reach out to me via. email to connect**. In doing so, please assess your preparedness for a *big* day in the mountains. It's a 17-mile round trip, 7000+ vertical, and ~1500' of that is alpine climbing with no fixed protection. Many folks will say the approach hike is the crux of the Grand, and while the rock is only rated 5.5, it is across alpine terrain with mandatory exposure and runouts, and potentially variable conditions (storms, verglas, crowds, etc...). Participation will be limited to 8 club members. Prior experience in multipitch and alpine terrain, fitness, and group dynamic will be factors for admission to the trip. Shakedown days around the Wasatch will be planned in advance to go over gear, rope systems, and movement efficiency. **Please note I will be on an expedition from mid-May until early-June, so you may not get a response right away!
Aug 15 Sat – Aug 16 Sun	Hike Partial Wurl – ext – 28.0 mi Shuttle – Fast pace <i>Meet:</i> Register with the Organizer <i>Organizer:</i> Frank Bouchard 352-246-5304 fabouchard@gmail.com Are you rational enough to know you can't hike the entire WURL, but just irrational enough to think you can hike most of it? This might be the hike for you. The Wasatch Ultimate Ridge Linkup is the most intense route in the Wasatch. We will be skipping the first ten miles of the official route but there will be more than enough ridgeline to leave you in tears. We will hike up to Cardiff Pass and then cover 25 gruelling miles that will likely take us late into the night and possibly into the next morning. To join this you must have extensive long-distance, steep hiking experience as well as climbing experience. It's mostly off-trail ridge hiking and there are many spicy scrambling sections. We will be moving fast and not taking many breaks. Let me know if you would like to join us on this painful, foolhardy endeavor. If I haven't hiked with you, tell me some of the bigger hikes that you've done and how long they took you.
Aug 21 Fri – Aug 23 Sun	White Water Rafting Weekend - Green River Below Flaming Gorge – class II+ – 7.0 mi – 100' ascent <i>Meet:</i> 2:00 pm at Dripping Springs Campground https://www.recreation.gov/camping/campsites/45713 <i>Organizer:</i> Mike Rush 208-932-3882 rush.miked@gmail.com Back by popular demand! Last year, we had 14 adventurous WMC members join in all kinds of watercraft, and it was an absolute blast. We successfully floated both Sections A & B with a smooth shuttle-everyone loved the scenery, the camaraderie, and the fun rapids! What to Expect Section A: 7.2 miles from Flaming Gorge Dam to Little Hole Recreation Area Crystal-clear water, Class II+ rapids-perfect for honing your skills Towering canyon walls, lush vegetation, and abundant trout. Section B: about 9 miles from Little Hole to Browns Park Slightly more challenging with faster water and additional rapids. Wildlife sightings: deer, elk, and diverse bird species Trip Details: Campground: Dripping Springs Group Site #1 (reserved) Cost: \$10 per vehicle per night (to cover campsite fee). See event listing on website for more details.



Aug 23 Sun – Sep 2 Wed	Teton Yellowstone Car Camp – mod- <i>Meet:</i> Register with the Organizer <i>Organizer:</i> Michael Budig, Dianne Budig 801-403-7677 mlbudig@gmail.com, mlbudig@gmail.com You are welcome to join us for car camping and day hiking in the Tetons and Yellowstone from Aug 23 thru September 2. You are welcome to join for any part or all of the trip. To join us, please make your own camping reservations for Colter Bay for August 23-26 thru Recreation.gov (we have campsite 75) and for Canyon Village for August 26-30 and Madison for August 30-September 2 thru Xantera. If you have any questions, please email mlbudig@gmail.com.
Aug 27 Thu – Aug 30 Sun	Tobacco Root Mountains Day Hikes With Car Camp – mod – 6.0 mi Loop – 2500' ascent – Moderate pace <i>Meet:</i> Register with the Organizer <i>Organizer:</i> Dennis Goreham 801-550-5169 dgoreham@gmail.com The Tobacco Root Mountains are located in the heart of the Beaverhead - Deerlodge National Forest in southwest Montana. In the range, there are 43 peaks over 10,000 feet. We will do a few of them. We will plan to stay at the Branham Lakes campground. From there many peaks are doable as day hikes. There are only 6 camp spots, first come first serve. If we don't get a spot here, there are many nice undeveloped sites down the canyon. Branham Lakes campground is about a 400 mile drive each way from SLC. Most day hikes will include a string of peaks in a loop from camp and may include Leggat, Thompson, Branham, Bradley, Lady of the Lake and maybe a couple a little farther away like Long and Lonesome. Hikes will be in the MOD range with milage about 5 - 6 miles and elevation gain about 2000 - 3000 ft. Depending on which peaks we do, part of trip may be exploratory. Expect off-trail hiking and some scrambling. Must register. Limit 6.
Sep 3 Thu – Sep 7 Mon	Wind River Range Mountaineering - Titcomb Basin <i>Meet:</i> Register with the Organizer <i>Organizer:</i> Nathan C 307-371-6356 nac787.home@gmail.com This is an alpine climbing trip to the Titcomb Basin and surrounding area in the Wind River Range of Wyoming. While Labor Day is a few weeks past the height of summer rock climbing season, late August and early September offer reasonable daylight and temps and is usually prime-time for alpine ice in the area. There is not a singular set objective on this trip - rather, it is envisioned as a chance for club mountaineers to base camp together in small teams, choosing the objective(s) that are most appealing. Thus, participation in this trip is open to all club members with a mountaineering background who are comfortable operating independently in committing terrain and remote settings with variable conditions. See event listing on website for more details.
Sep 7 Mon – Sep 10 Thu	White Water Rafting-San Juan River – class III- – 40.0 mi – 750' ascent <i>Meet:</i> Register with the Organizer <i>Organizer:</i> Marcia Andriano-Pilz 801-864-6641 partner2@comcast.net Join my husband and myself on a four day journey down the San Juan River-Sand Island to Mexican Hat. This is going to be an extremely hot weather trip down a gorgeous canyon in Southeastern Utah. River flow will be very low. This will be more of a scenic float than a white water thriller. Trip limited to 12 participants. Contact me directly at partner2@comcast.net. Marcia Andriano-Pilz
Sep 10 Thu	Fall Membership Meeting At Millcreek Library <i>Meet:</i> 5:30 pm at Millcreek Library meeting room (2266 E Evergreen Ave, Salt Lake City, UT) <i>Organizer:</i> Giulia Roselli 801-604-6635 socialdirector@wasatchmountainclub.org We have changed the place to meet for the Fall Membership event, it is now at the Millcreek Library from 5:30 pm to 8:45 pm. We won't be able to cook brats and hamburgers but we will provide some food. Bring your own meal or a dish to share would be greatly appreciated. Bring your own drink but water, coffee, tea will be provided. We'll cover basic club business, and then, returning by popular demand, we'll have a special presentation TBA. The 100-year photo panels will be on display. FYI: The Board has decided to schedule the Lodge for Sun October 25 for a Halloween Party, check the calendar!
Sep 10 Thu – Sep 15 Tue	Backpack: The Bechler Region, Yellowstone – mod+ – 45.0 mi Shuttle – Moderate pace <i>Meet:</i> Register with the Organizer <i>Organizer:</i> Michael Berry 801-750-1915 mcber.ut@gmail.com A 5-day/4-night point-to-point backpack with a car shuttle to set-up. One night with a car camp at Cave Falls Campground in the Caribou-Targhee National Forest. This trip includes an initial pack-in of 5 miles on an abandoned Forest Service logging road in Idaho to reach the Park boundary and the Buffalo Lake Trailhead campsite. Previous experience with lightweight (not 'ultra-light') backpacking required. All participants will be required to carry bear spray on their body while hiking. WMC members will be given priority to register up to September 1 (Trip minimum: 3 participants by September 5, or trip subject to cancellation; Maximum: 6). A \$20 deposit covers the 4 backcountry sites (per person) thru Recreation.gov to hold your spot.
Sep 13 Sun – Sep 18 Fri	White Water Rafting Lower Salmon – class IV- <i>Meet:</i> Register with the Organizer <i>Organizer:</i> Parker Winkel 330-941-0502 paw123321@gmail.com This is a place holder fall back trip in case I don't get any permits. Plan on 4-5 night class III (IV) river with great camping. I'll probably have a little motor to push through the flat water. If I win a permit this may get cancelled. American Whitewater https://share.google/nZKwOdA5EEplzIpO
Sep 14 Mon – Sep 19 Sat	Yellowstone Backpack – mod – 25.0 mi Shuttle – 2000' ascent – Moderate pace <i>Meet:</i> Register with the Organizer <i>Organizer:</i> Michael* Budig, Dianne Budig 801-403-7677, 801-403-7677 mlbudig@gmail.com, Mbudig@mail.com This will be a trek from Mammoth to Fan Creek - only about 25 miles - with an optional 7 mile 4,000 ft elevation gain hike up Electric Peak. Please address questions by email or text- Cost of permit is \$26/per person. Limited to 10 participants.
Sep 17 Thu – Sep 20 Sun	Rock Climb - City Of Rocks <i>Meet:</i> Register with the Organizer <i>Organizer:</i> Steph Stamm 973-945-3755 steph.m.stamm@gmail.com Join us for a long weekend in the city! CoR is home to a variety of climbing in this unique and wondrous geological area - trad, sport, single pitch or multi - ranging from 5.easy to 5.hard. Here's the MP link for the area. The club will provide ropes and anchors, but bring your quick draws, helmet (required), harness, belay device and locking carabiners. I reserved sites 2 and 3 - one is a walk in and one is for car / RV camping. The sites can accommodate up to 16 people, and well socialized fur friends are welcome too. Feel free to book your own site nearby and join us for campfire time and climbing. It's dry camping, so there is no access to electric hookups or water - be sure to bring plenty of water and anything else you'll need in that regard. The cost of the campsite will be approx \$10/person total. Once we are a few weeks out from the trip, I'll help coordinate carpooling.
Sep 18 Fri – Sep 20 Sun	Car Camp & Hikes - Mt. Belknap & Mt. Baldy (& More), Tushar Mts – msd- – Moderate pace <i>Meet:</i> Register with the Organizer <i>Organizer:</i> Akiko Kamimura kamimura@umich.edu We plan to hike to Mt Belknap (12,143 ft), Mt Baldy (12,084 ft) and maybe other peaks in the Tushar Mountains, weather, conditions and situation permitting. I have hiked in the Tushar Mountains but not to those peaks. Exploratory. Expect class 2+ scrambles. We will leave on Friday and come back on Sunday. The main hike to Belknap and Baldy will be on Saturday. We may do a short hike on Friday and/or Sunday. Approximately 3.5-4-hour drive from SLC. We plan to camp at a dispersed/primitive campsite. Please email before Thursday, noon, Sep 17, for the meeting place and time. Registration is required. Registration priority will be given to WMC members. Registrants will receive more detailed info.



Sep 26 Sat	National Public Lands Day Hiking Trail Maintenance! – mod – 4.0 mi Out & Back – 500’ ascent – Moderate pace <i>Meet:</i> Register with the Organizer <i>Organizer:</i> Daisy DeMarco 610-517-7867 daisyandemarco@gmail.com Come out and celebrate National Public Lands Day with WMC and CCF by taking care of the lands we love! Reach out and let me know that you will be attending so I can send updates on meeting time, place, and details about the activity. This is weather dependent, so make sure to look for updates the week of the event. Please also register with CCF at the link below. More information to follow as the activity date nears. https://cottonwoodcanyons.org/volunteer/?swcfpc=1
Oct 2 Fri – Oct 4 Sun	Antelope Island Multi-Sport Activity Weekend <i>Meet:</i> 5:00 pm at See calendar for the various activities. If camping, arrive at the island any time. <i>Organizer:</i> Giulia Roselli, Julie Kilgore 801-604-6635 socialdirector@wasatchmountainclub.org, jk@wasatch-environmental.com This is a beloved activity by Julie Kilgore. Join us for the day, or reserve a campsite and stay a night or two. Come hike, climb, paddle, and/or peddle on Antelope Island. See the WMC calendar for the variety of activities to choose from. Each activity posted on the calendar counts as a separate activity towards the Activity Challenge jacket! After a great day of WMC activities, gather at and around Campsite BB10 at Bridger Bay Campground for some Saturday afternoon socializing. THERE IS A \$10 ENTRANCE FEE TO THE PARK. EACH PARTICIPANT/CAR IS INDEPENDENTLY RESPONSIBLE FOR ENTRANCE FEE.
Oct 7 Wed – Oct 10 Sat	Trek-Napali Coast 22 Mile Backpacking Trip – msd – 22.0 mi Out & Back – 800’ ascent – Moderate pace <i>Meet:</i> Register with the Organizer <i>Organizer:</i> Anja Wadman anjawadman@gmail.com Trek- Napali Coast on the Kalalau Trail, Kauai, HI Description:Location Kauai, Hawaii 11 miles Kalalau Trail on the Napali Coast October 7, 8, 9, 10, 2026 Beach camping for 2 nights Permits open up 90 days in advance. Cost is \$35 per person/per night Plus getting to Kauai, food, rental gear, and rental vehicle. See event listing on website for more details.
Oct 7 Wed – Oct 11 Sun	2026 WMC Canyoneering Rendezvous <i>Meet:</i> 5:00 pm at https://luma.com/20nwt78 <i>Organizer:</i> Shane Wallace 801-400-6372 shaneswallace@gmail.com https://luma.com/20nwt78
Oct 16 Fri – Oct 18 Sun	Hike & Car Camp: Mt. Mellenthin & Mt. Laurel, La Sals – msd <i>Meet:</i> Register with the Organizer <i>Organizer:</i> Akiko Kamimura kamimura@umich.edu We plan to make Mt Mellenthin (12,645 ft) and Mt Laurel (12,279 ft) in La Sals. The TH elevation is approximately 10,020 ft. Although the elevation gain is not a lot, the last part to the summits are steep. I have been to the bottom of Mt Laurel. Although I haven't hiked those peaks yet, I am familiar with the route. We will do dispersed car camping near the TH. Trip schedule: Oct 16 Fri: road trip (approximately 4 hours from SLC) & set up a campsite. Oct 17 Sat: hike (approximately 6 miles RT). Oct 18 Sun: Road trip. The schedule may be adjusted depending on the conditions. Some participants may go home on Saturday. Participants must: 1) have excellent stamina; 2) be comfortable to hike on tula. and 4) no history of altitude problems above 12,000 ft. Camping experience strongly desired. For more details, please contact the organizer. Limit 10. WMC members only.
Oct 17 Sat – Oct 28 Wed	Trek The Annapurna Circuit In Nepal – mod – Loop – Slow pace <i>Meet:</i> Register with the Organizer <i>Organizer:</i> Dave Ashley david.ashley.vet@gmail.com Re-scheduled from March 2026 when we cancelled due to flight impacts of the Middle East war. Come join Dave Ashley in Nepal on a trek of the world-famous Annapurna Circuit! See event listing on website for more details.
Nov 7 Sat	Social: Organizers And Volunteers Appreciation Dinner <i>Meet:</i> 6:00 pm at Wasatch Presbiterien Church (1626 S 1700 E, Salt Lake City, UT) <i>Organizer:</i> Giulia Roselli 801-604-6635 socialdirector@wasatchmountainclub.org Sat November 7, 2026 Annual Trip Organizers and Volunteer Appreciation Dinner. This is an invitation only event, our way of saying thank you to all those who organized 2 activities or 1 multi-day activity, or volunteered in another capacity within the last 12 months. Most of the invitations will be going out via email, so if you think you qualify and you don't see that invite, check your spam, then follow up with your respective activity director. Social hour 6:00 pm, Dinner/Awards at 7:00 pm. Raffle prizes will be given away. You don't want to miss this event.
Apr 30 Fri – May 2 Sun 2027	Mountaineering - Mt. Tukuahnivatz (Tuk), La Sals – msd <i>Meet:</i> Register with the Organizer <i>Organizer:</i> Akiko Kamimura kamimura@umich.edu We plan to make Mt Tukuahnivatz (Tuk) (12,485 ft) and Little Tuk (12,056 ft). The TH elevation is approximately 9,013 ft. Distance is approximately 7.5 miles RT. I have not done those peaks yet but scouted the route in May 2026. WMC members only. See event listing on website for more details.
Jul 1 Thu – Jul 10 Sat 2027	Kayaking- Ocean Kayaking Along The Na Pali Coast Line. Kauai – class III+ <i>Meet:</i> 8:00 am at Kauai Hawaii <i>Organizer:</i> Anja Wadman anjawadman@gmail.com This trip will be expensive and strenuous. Kayaking to Miloli'i Beach on Kauai is a premier, challenging adventure along the Na Pali coast, typically accessible only by boat or kayak during summer months (May 15-Sept 7). See event listing on website for more details.
May 24 Wed – Jun 8 Thu 2027	Mountaineering - Acohuma & Illampu, Bolivia – ext <i>Meet:</i> Register with the Organizer <i>Organizer:</i> Akiko Kamimura kamimura@umich.edu We plan to climb two 6,000m peaks in Bolivia - Acohuma (6,427m/ 21,086 ft) and Illampu (6,331m/ 20,771ft). We will do acclimatization hikes before climbing those peaks. Illampu is known as "The King of the Mountains" which is one of the hardest climbs in the Andes. WMC members only. See event listing on website for more details.

More activities are in the online calendar. Check <https://www.wasatchmountainclub.org/calendar> for updates. And subscribe to one or more activity email lists for short notice postings. Go to <https://www.wasatchmountainclub.org/email-lists> to subscribe (you'll have to log in)



Seven Principles



Plan Ahead & Prepare



Travel & Camp on Durable Surfaces



Dispose of Waste Properly



Leave What You Find



Minimize Campfire Impacts



Respect Wildlife



Be Considerate of Others





Plan Ahead & Prepare

- Be prepared! Remember food and water, and clothes to protect you from cold, heat and rain.
- Use maps to plan where you're going. Check them along the way so you'll stay on course and won't get lost.
- Remember to bring a leash for your pet and plastic bags to pick up your pet's waste.
- Learn about the areas you plan to visit. Read books, check online and talk to people before you go. The more you know, the more fun you'll have.



Travel & Camp on Durable Surfaces

- Walk and ride on designated trails to protect trailside plants.
- Do not step on flowers or small trees. Once damaged, they may not grow back.
- Respect private property by staying on designated trails.
- Camp only on existing or designated campsites to avoid damaging vegetation.
- Good campsites are found, not made. Don't dig trenches or build structures in your campsite.



Dispose of Waste Properly

- Pack it in, Pack it out. Put litter—even crumbs, peels and cores—in garbage bags and carry it home.
- Use bathrooms or outhouses when available. If not available, bury human waste in a small hole 6-8 inches deep and 200 feet or 70 big steps from water.
- Use a plastic bag to pack out your pet's poop to a garbage can.
- Keep water clean. Do not put soap, food, or human or pet waste in lakes or streams.



Leave What You Find

- Leave plants, rocks and historical items as you find them so others can enjoy them.
- Treat living plants with respect. Carving, hacking or peeling plants may kill them.



Minimize Campfire Impacts

- Use a camp stove for cooking. Stoves are easier to cook on and create less impact than a fire.
- If you want to have a campfire, be sure it's permitted and safe to build a fire in the area you're visiting. Use only existing fire rings to protect the ground from heat. Keep your fire small.
- Remember, a campfire isn't a garbage can. Pack out all trash and food.
- Firewood should be either bought from a local vendor or gathered on site if allowed. Don't bring firewood from home – it can harbor tree killing insects and diseases. Many states regulate the movement of untreated firewood.
- Before gathering any firewood, check local regulations.
- Burn all wood to ash and be sure the fire is completely out and cold before you leave.



Respect Wildlife

- Observe wildlife from a distance and never approach, feed or follow them.
- Human food is unhealthy for all wildlife and feeding them starts bad habits.
- Protect wildlife and your food by securely storing your meals and trash.



Be Considerate of Others

- Be considerate when passing others on the trail.
- Keep your pet under control to protect it, other visitors and wildlife.
- Listen to nature. Avoid making loud noises or yelling. You will see more wildlife if you are quiet.
- Be sure the fun you have outdoors does not bother anyone else. Remember, other visitors are there to enjoy the outdoors too.



50 Years Ago in The Rambler

Transcribed by Donn Seeley

Club activities for July '76 [...]

JULY 17 Sat.	ALEXANDER BASIN TO BOWMAN FORK. Elevation 10,000. Rating 7.0. This is an excellent hike between two side canyons in the Millcreek Canyon area. Meet at the Movie at 8:30 am. Leader: Walter Haas [...]
JULY 25 Sun.	DROMEDARY-TWIN PEAKS RIDGE RUN. Elevation 11,330. Rating 15.0. This hike will start either from Alta or from Lake Blanche and then go up to the ridge and on to Dromedary, Sunrise, and Twin Peaks. Call the leader for registration and meeting place. Leader: Dave Hanscom [...]

Storm Mountain June 5 by Phyllis Robison

Thirteen people congregated at Big Cottonwood Canyon on this very beautiful day, and the number should have given us some clue of what was to come.

Shortly after heading into Ferguson Canyon, several hiking groups took form. The speedsters (and those who knew the route) strode on ahead while the rest of us strolled along chatting, assuming that "someone up there" knew where he was going. That was only the first of many mistakes! As a matter of fact, this hike should more appropriately have been called Murphy's Hike because if anything could go wrong, it did!

After leaving the stream bed, we (the laggards) hiked a good 500 vertical feet (or more) up a very loose "blister hill" on the south side of the canyon. We halted for a brief rest, at which time our fearless leader, John Gottman, came up from the rear. It seems he had dropped behind with Dianne Rudick who was having difficulty and decided not to continue the hike. Looking across the canyon to the north, we spotted the rest of our party, high on a switchback! After Gottman jokingly attempted to convince them that they were on the wrong trail, we did some "F6" bushwacking (the kind where your feet never get through to the ground for 50 yards at a time) back down to the stream. Not knowing where the trail was, we continued to bushwack back up the north side, toward that high switchback. The whole operation probably took about an hour before we dragged our bleeding bodies up to the right trail. Paul Rubinfeld suffered quite a gash on his leg and the rest of us were a maze of scratches.

At this point the hike was fairly well divided into four contingents. Somewhere ahead (probably near the summit by now!) were Jerry Horton, Bob Weatherbee, and Bonnie Baty (Unit 1), joined most of the way by John Riley and Karl Lagerberg (Unit 2). Upon finally reaching the trail, John Gottman, Lorri Webb, Paul Rubinfeld and I followed it (Unit 3). Mike Treshow, deciding by then that a trail is something to cross while bushwacking, continued toward the ridge with Diana Schoenberg and Walter Haas in tow (Unit 4).

Our trail soon deteriorated into the brush again. It turned out that Gottman had done the hike only once before and had been on snow at this point. So no one in Units 3 or 4 knew of any trail up the canyon. After floundering around in brush again, Paul decided he had better things to do on a Saturday afternoon (not an unwise decision), so he turned back and John, Lorri and I headed for the ridge. Meanwhile, Treshow and his group had attained the ridge at a lower point, and finding it brushy, they went back down to the stream! Finally, as John, Lorri and I approached the base of Storm Mountain, we saw Unit 1 in a meadow far below us and on their way down. About three pitches from the top, I met John Riley and Karl Lagerberg on their descent. After spending nearly an hour on top, our unit headed down and ran into the final unit at the base of the peak. Di Schoenberg was quite content to stop at that point, so John, Lorri, Di, and I waited there while Mike and Walter climbed the peak.

Coming down proved as much of a fiasco for the six of us as going up. We were plagued by separations and wrong turns. But we managed to locate the trails and found how narrowly we had missed them on the way up. After 10 hours we finally emerged at the mouth of Ferguson Canyon; all of us tired, scratched, sunburned, convinced that we could never find that trail again. But through it all I enjoyed the excellent company and I will remember the hike with fondness.



WASATCH MOUNTAIN CLUB
1390 SOUTH 1100 EAST #103
SALT LAKE CITY, UTAH 84105
Phone: 801-463-9842
www.wasatchmountainclub.org
info@wasatchmountainclub.org

PERIODICALS
POSTAGE PAID
SALT LAKE CITY
UTAH

Join the club

<https://www.wasatchmountainclub.org/join>

